

Volume



Habitatges al Carrer Escornalbou
Nomen i Associats, Barcelona, 2016



14 Residential Units
Coll-leclerc, Barcelona, 2011



Skinny House
Olivier de Puy, Melbourne, 2019



Casas Vinya d'en Petaca
L Clotet, S. Pere de Ribes, 2007

Facciata



Sainte Marie de la Tourette
Le Corbusier, Evieux, 1956



COAM Headquarters
G. Moure, Madrid, 2012



Office Apartment Building
C. Ferrater, Barcelona, 2002



Lucien Cornil Student Residence
A+, Marseille, 2017

Interni



Viviendas en la Barceloneta
J.A. Coderch, Barcelona, 1951-55



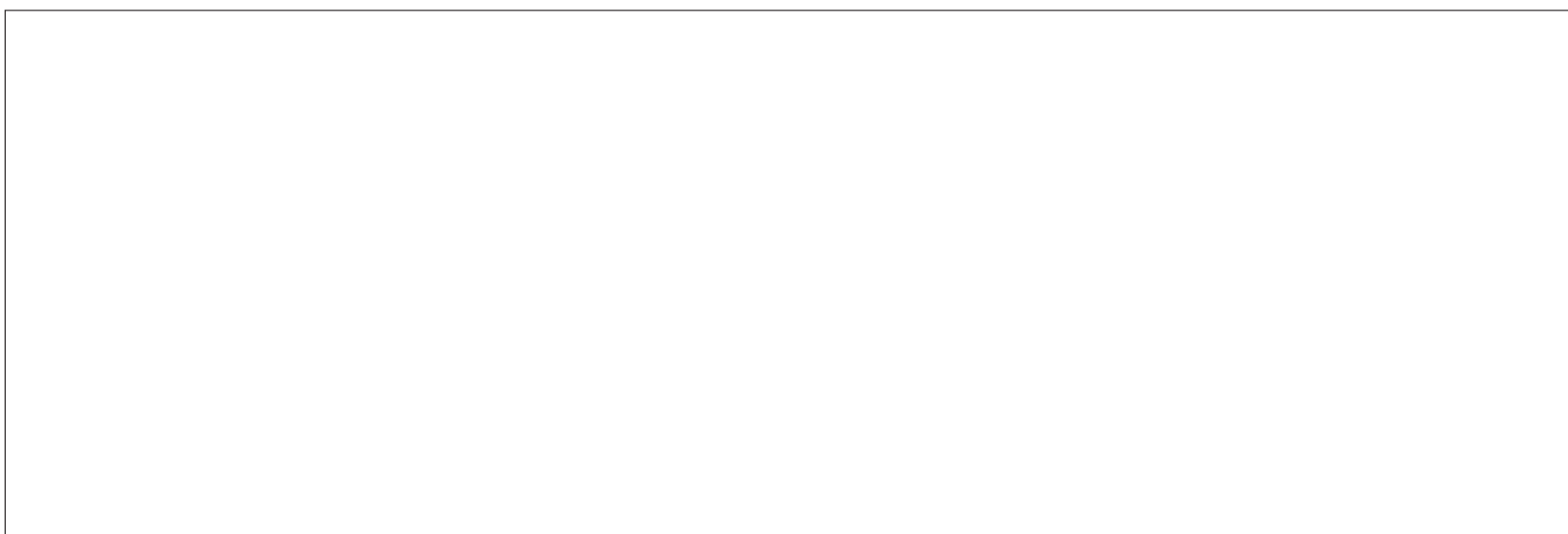
LAGO Welcome Asolo
Lago, Canonica di Santa Caterina, 2017



Kitagata Apartment Building
SANAA, Gifu, 1994



Finestra Arredata
Gio Ponti, Milano, 1954



Questa architettura fatta di ritagli, di frammenti e di scarti, gioca e si prende gioco.
mostra piuttosto che insegnare e insinua piuttosto che affermare.
(Selva-Memles, 1956)



Catilina
L. Caccia Dominioni, 1957



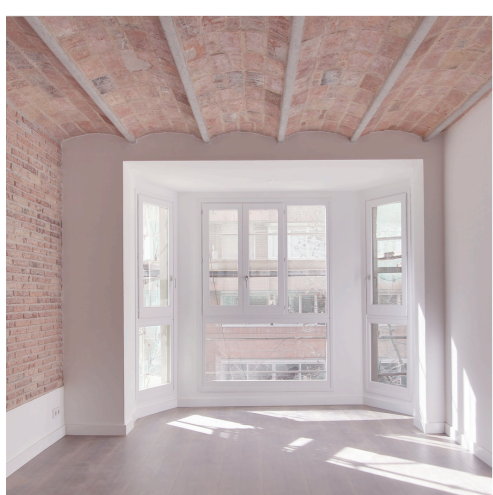
Disa
J.A. Coderch, 1957



Barcelona
L. Mies van der Rohe, 1929



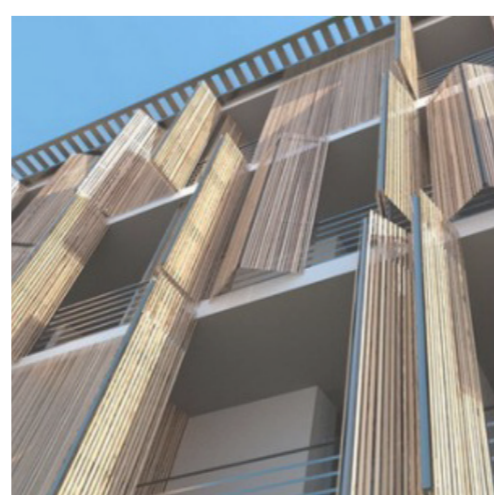
Elementi chiave



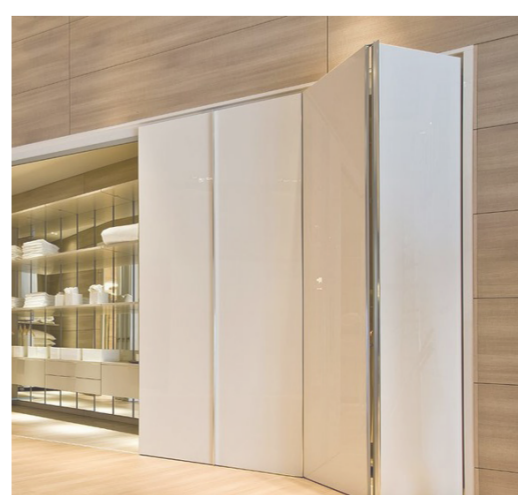
Volta catalana



Tettoia esterna



Brise-soleil a soffietto

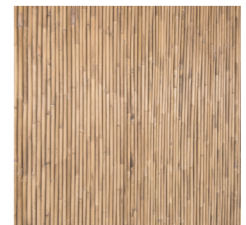


Pareti mobili a soffietto

Materiali



Laterizio



Bambù



Intonaco



Cemento



Pietra locale



Panot

Riferimenti e Suggestioni
Moodboard