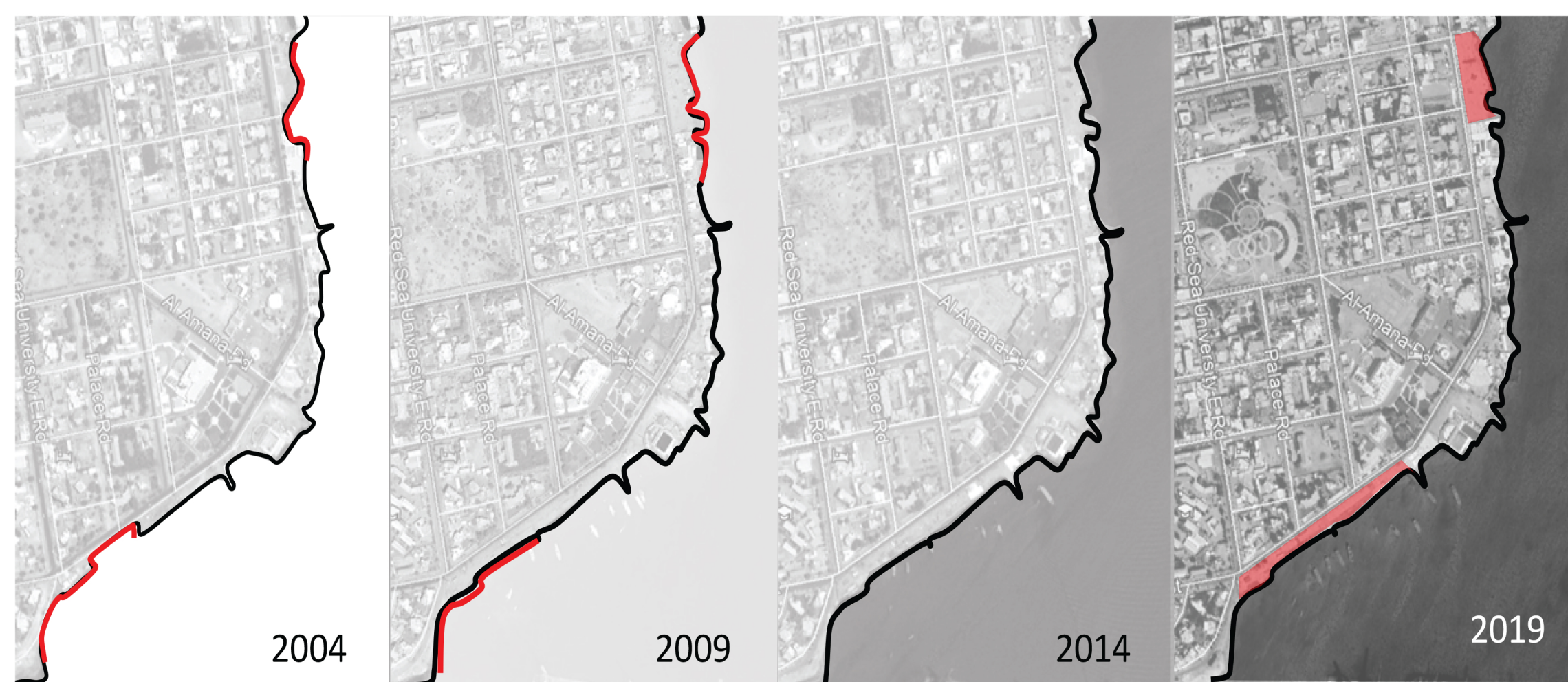


SUDAN is the second largest country in Africa after Algeria, with an area of 1.882.000 Km<sup>2</sup>. The eastern Sudanese coastal areas, represented in areas overlooking the Red Sea, have acquired significant strategic and economic importance. The most important areas and cities of the Sudanese coast is Port Sudan

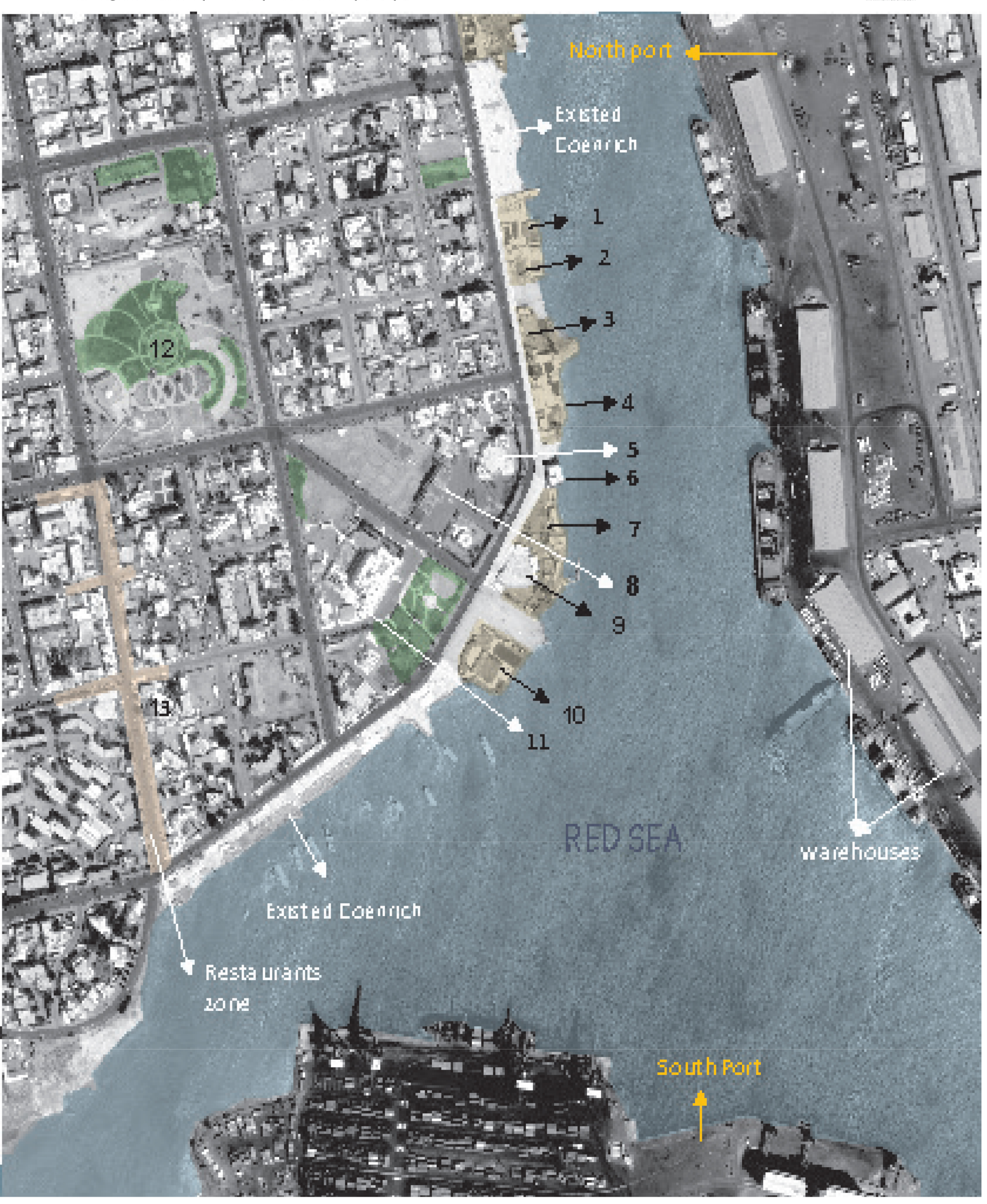
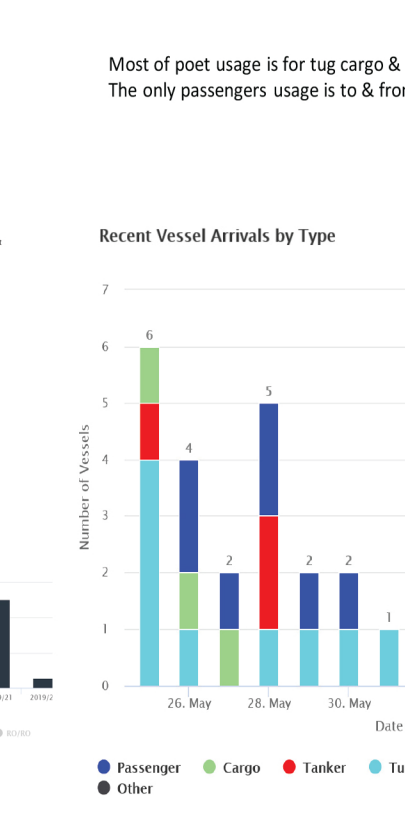
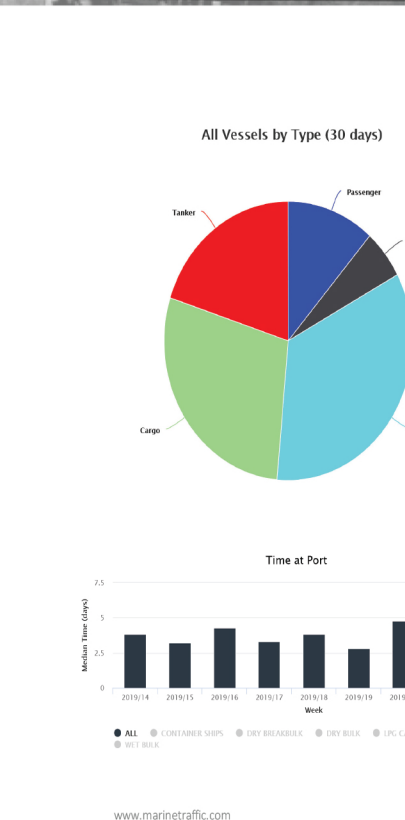
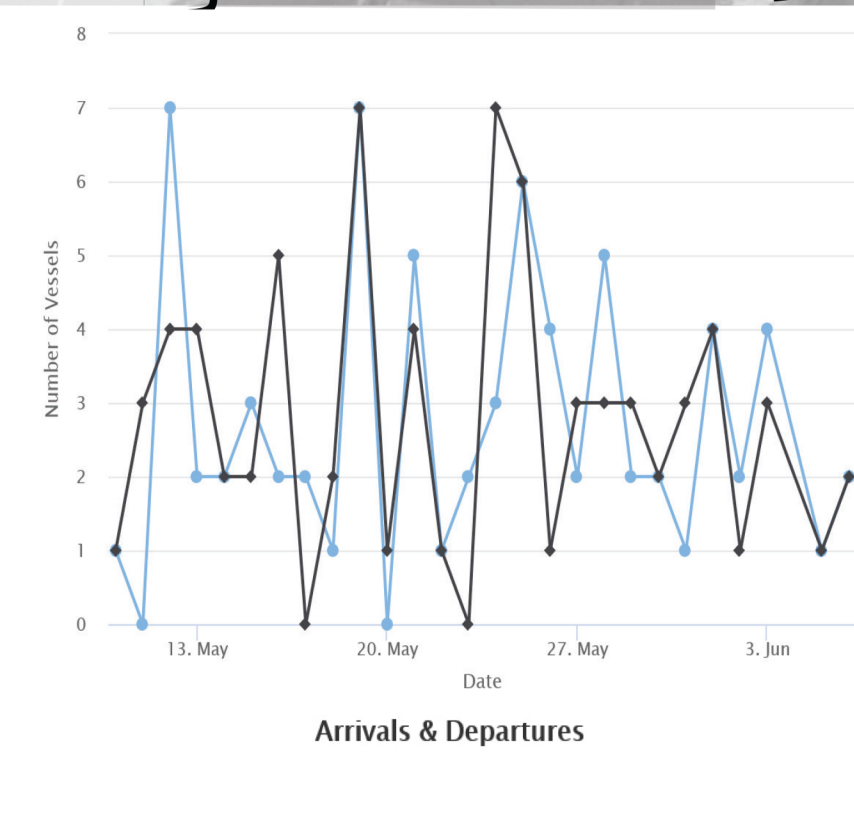
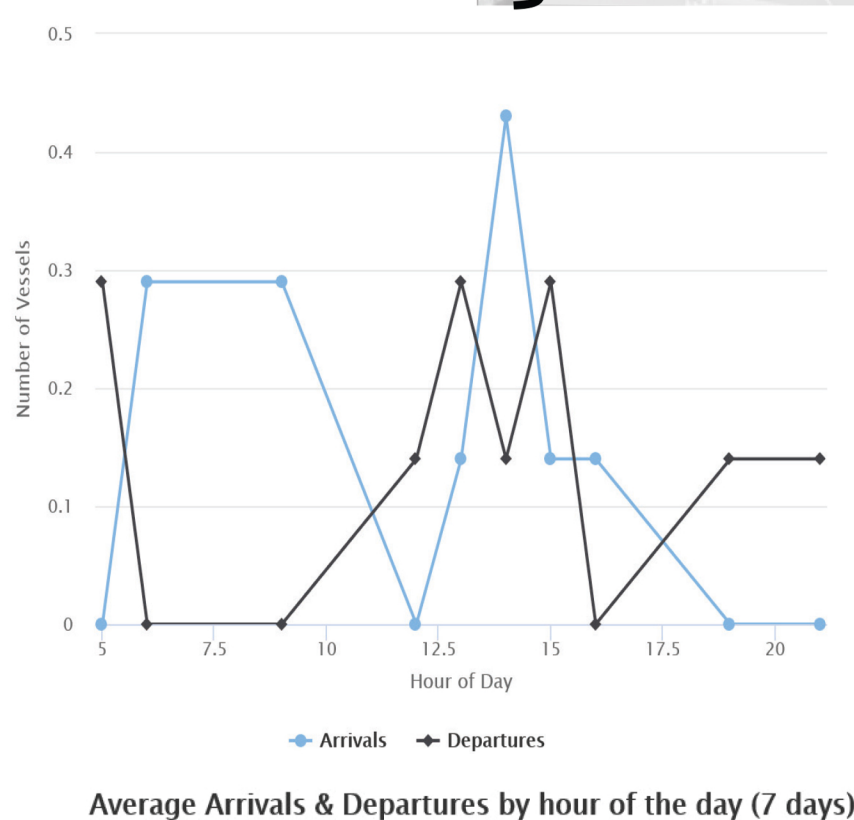
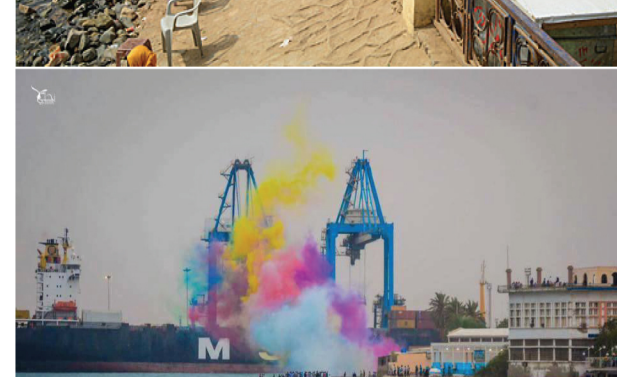
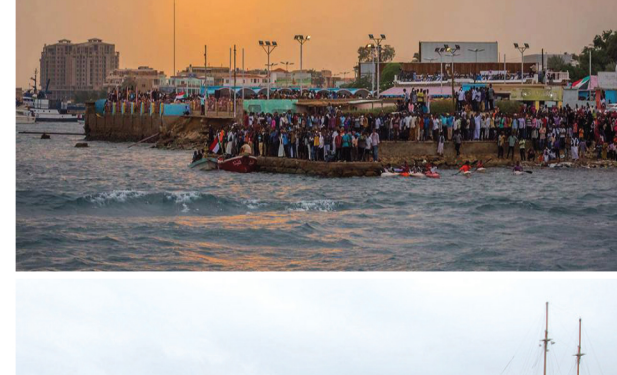
### Changing in the border during the years



PORT SUDAN is a port city in eastern Sudan, and the capital of the state of Red Sea. Located on the Red Sea, it is the Republic of Sudan's main port city. With total population of 489,725 residents.

### PORT OF PORTSUDAN

Comprises three main areas; North Port, South Port and Green Harbor. Port handles containers, dry and liquid bulk, Ro-Ro and general cargo. In addition, there are many berths handling repair, coastal trade and fishing.



### LAND USE

- 1 Social club
- 2 Social club
- 3 Private Area
- 4 Social Club
- 5 Office Building
- 6 Office Building
- 7 Aquarium
- 8 Office building
- 9 Amphitheater
- 10 Social club
- 11 Hotel
- 12 Central park
- 13 Hotel

### Main Activities In Port Sudan

- Diving
- Boats trips
- Coral reefs
- Relaxation
- Tea and coffee
- Souvenirs
- Fishing
- restaurants