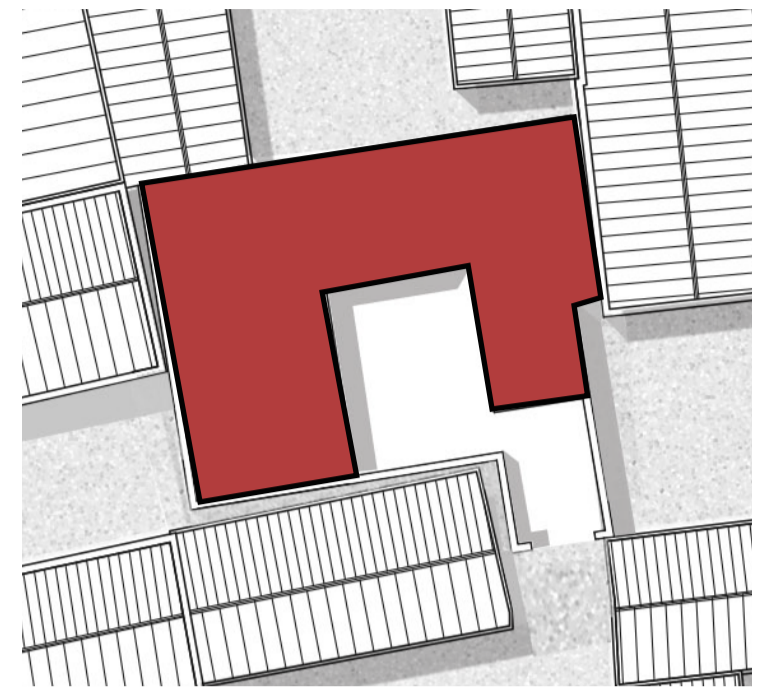


Atelier House

Current Situation

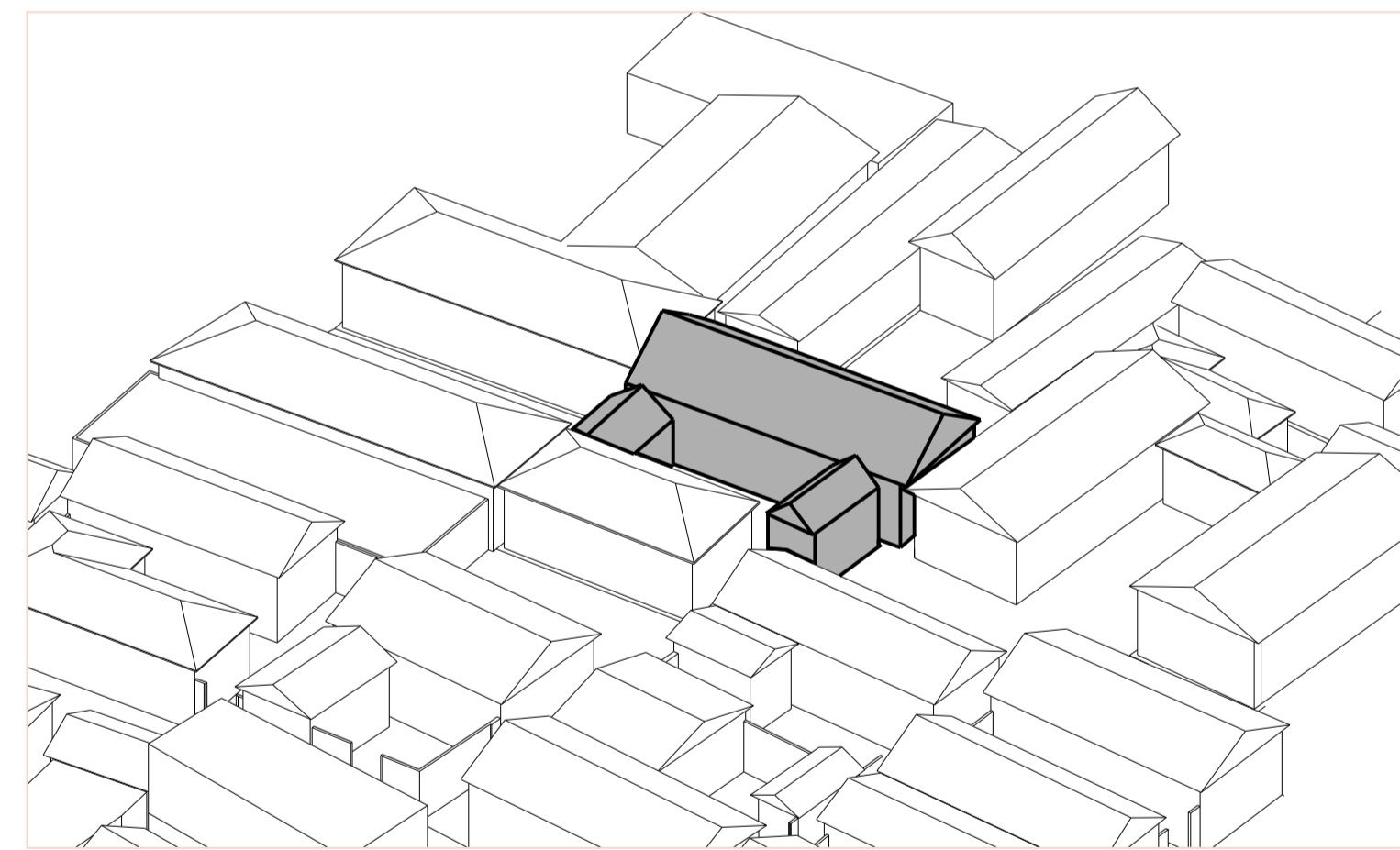


Site area: 108m²
 Floor area: 63.95m²
 Max height: 4.64m

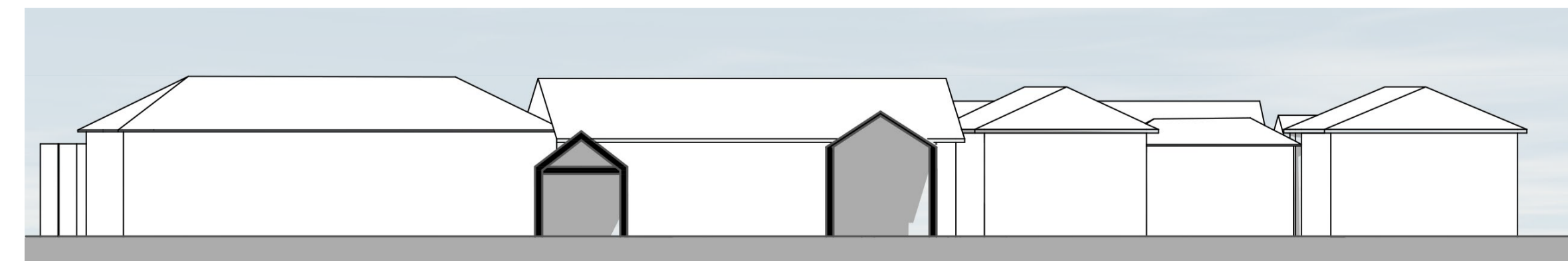


Original layout:

Design concept:



Section:

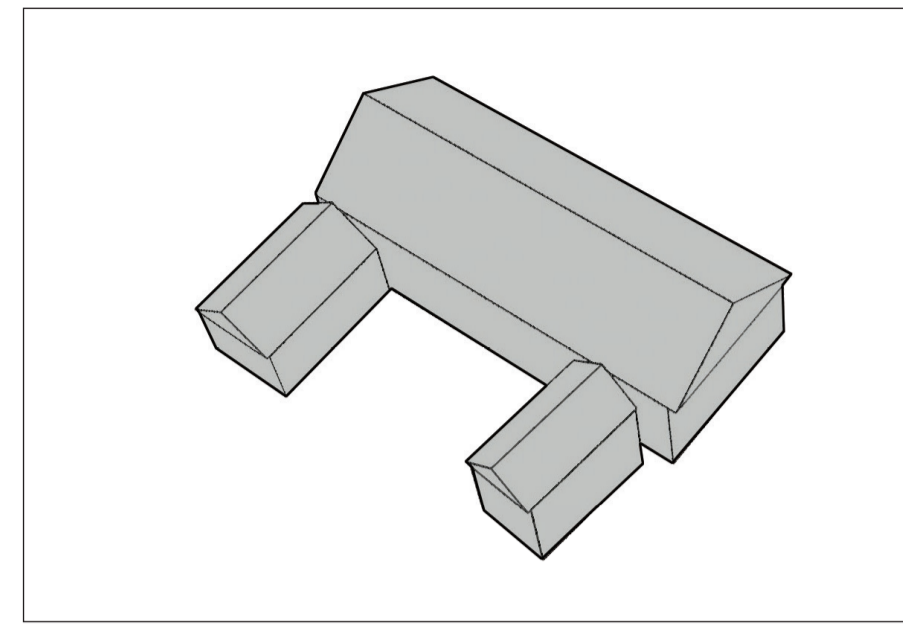


-Improvement of the interaction: compare with the current situation, the lack of communication of each courtyard became a severe drawback among all the community, in the meantime, the owner of this yard is a couple but want to make the space full of use and make it like an area with more leisure.

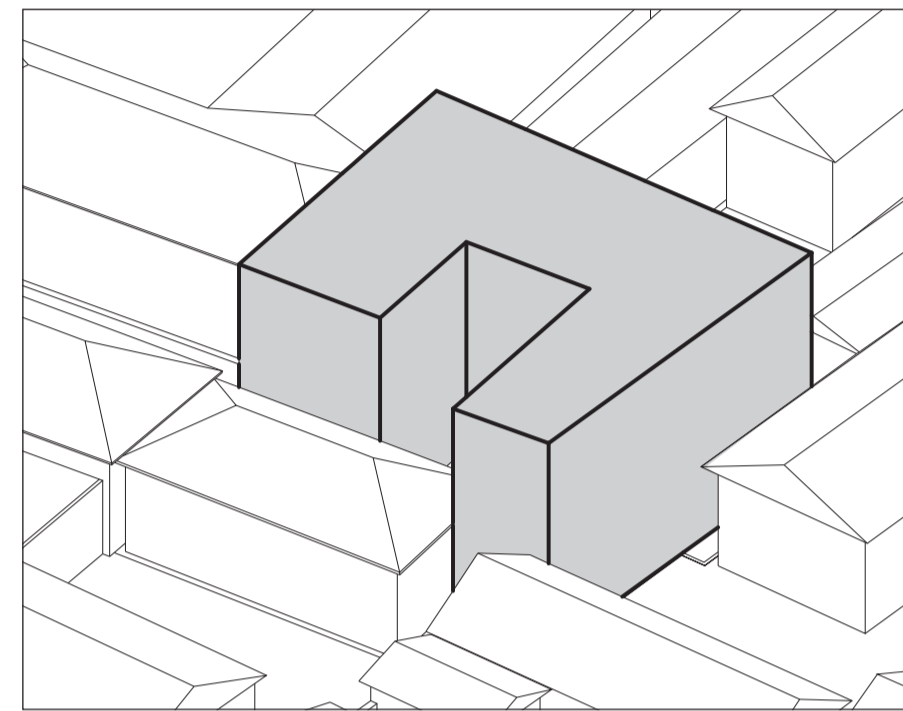
-Increasing of vegetation: considering the whole design aims of the project, also with idea of sustainability and environmental friendly, the more green of this area could be a strength.

-Combine with Traditional Culture: in order to achieve the final aim of the awareness of Chinese traditional culture for each one who lives or visits, planning to add some visual elements should be a necessary aspect too.

Current layout:



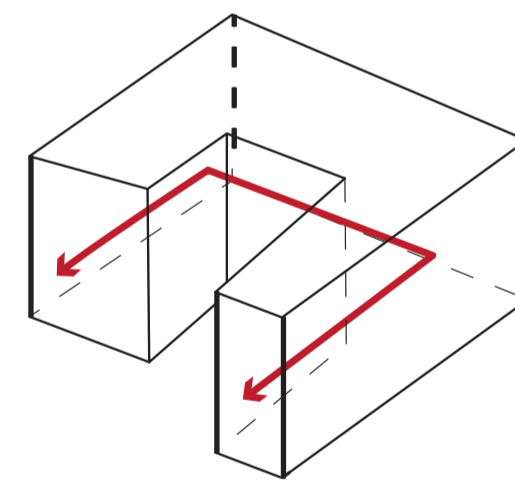
Design layout:



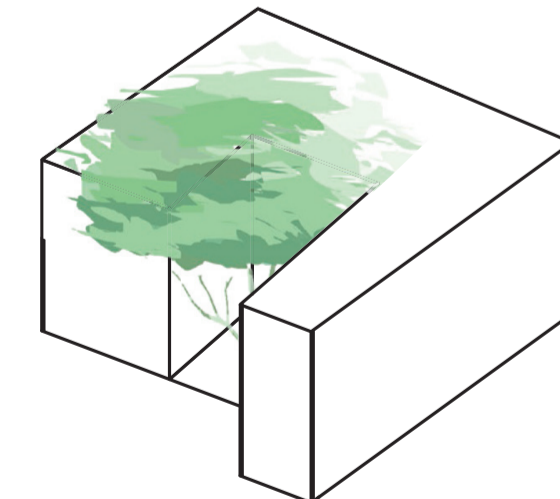
Method & Strategy:

1. Reorganization the existing space with better use
2. Creating a courtyard interaction space in the middle to memorize the traditional courtyard space and in the meantime increase the effect of light gain.
3. Improve the functional aspect compare with the traditional ones.

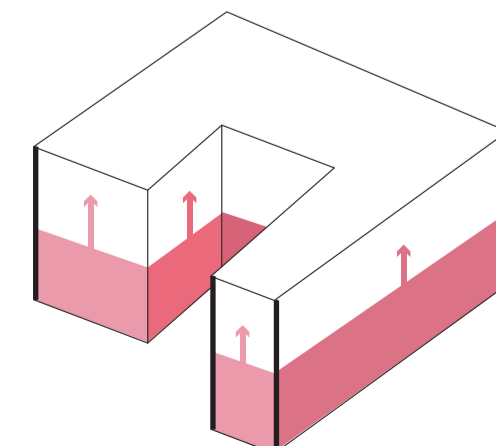
Interaction



Vegetation



Reorganization



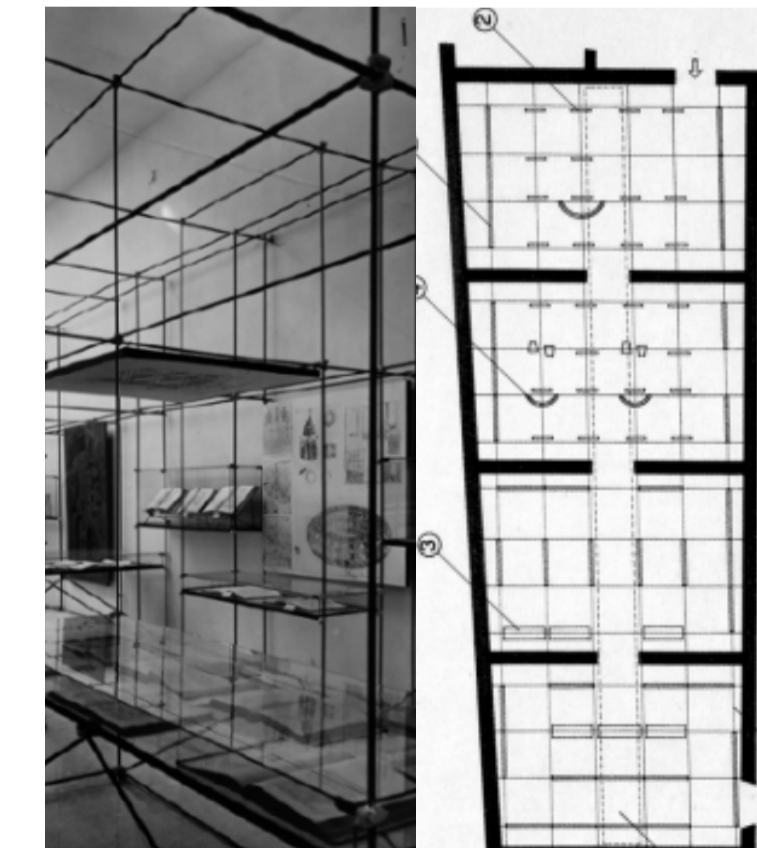
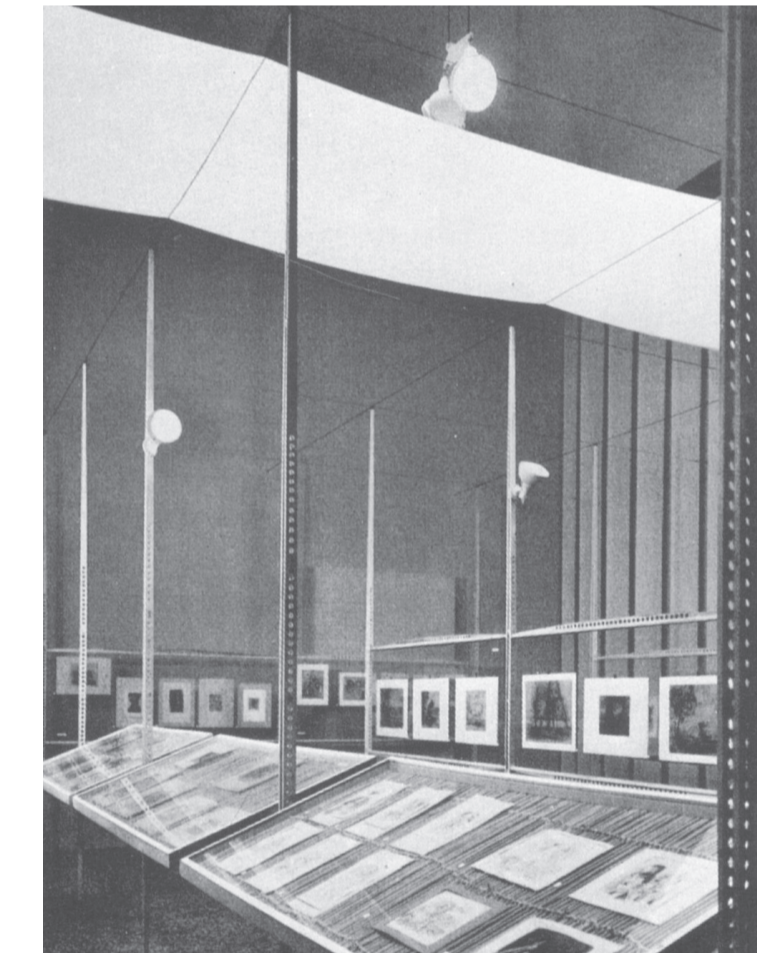
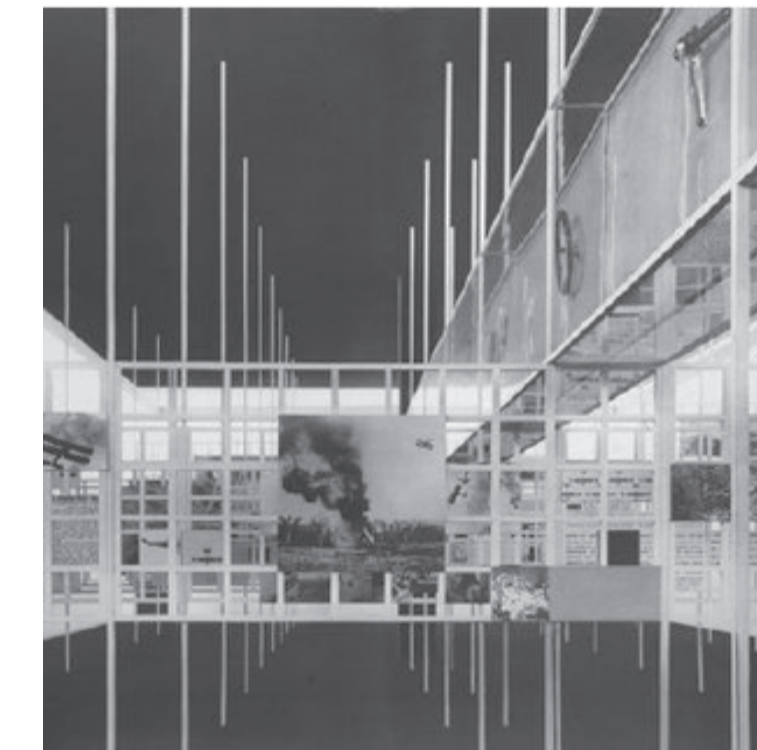
Aim Function:

Atelier House:

The owner of the courtyard house is an artist. The ground floor is the place for him to exhibit his works and also provide a place to communicate with the guests. First floor is the private zone, including bedroom, bathroom, living room, working space, kitchen.

In the meantime, according to the research done above about the traditional courtyard organization and its important elements, we are going to redesign the entrance part of our site and add other typical elements which can respect the history and correspond the current and arts.

Also, for the ground floor is going to be a free space mainly for the exhibition and we are going to invent a new system according to the grids logic all the project.

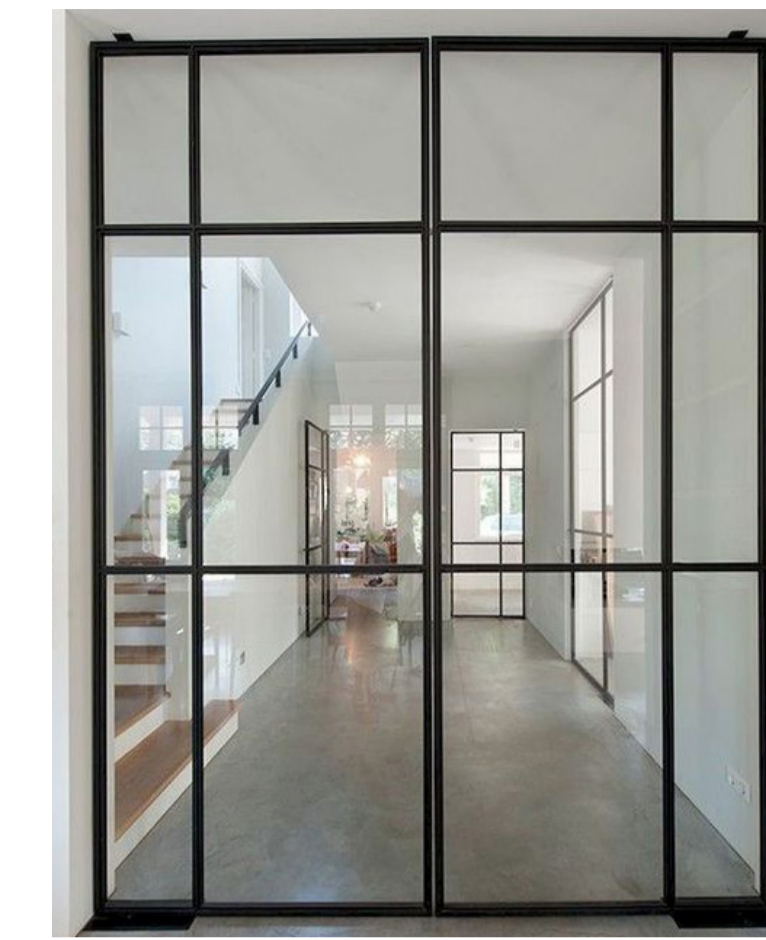


Reference of the exhibition system:

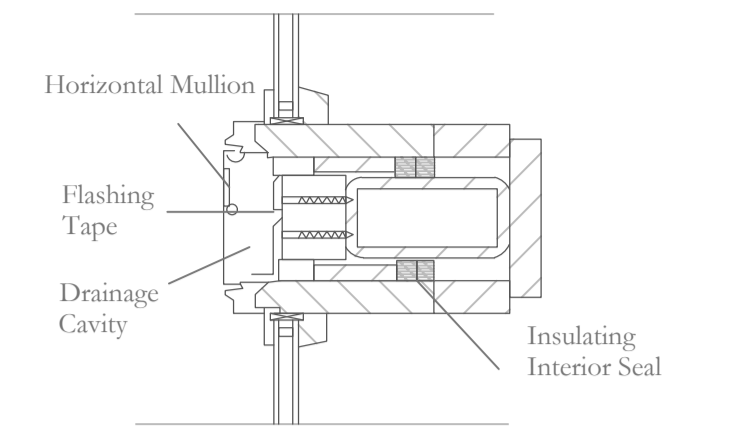
Franco Albini

Triennale di Milano, 1936
 Pinacoteca di Brera, 1941

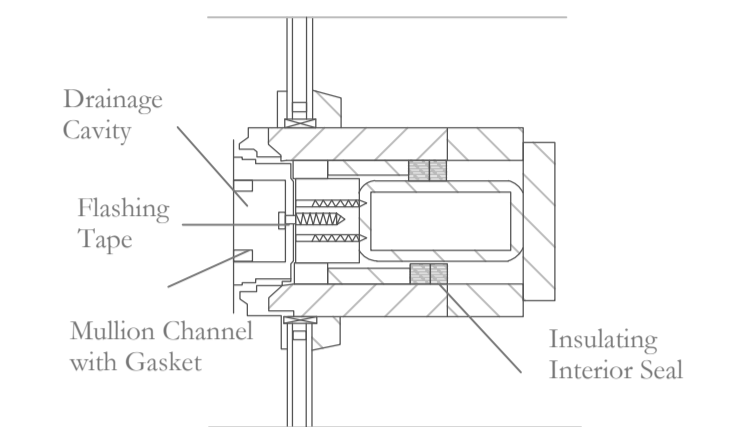
Reference of factory-style glass window:



Details:



Horizontal Mullion 1-1 1:2



Vertical Mullion 2-2 1:2

