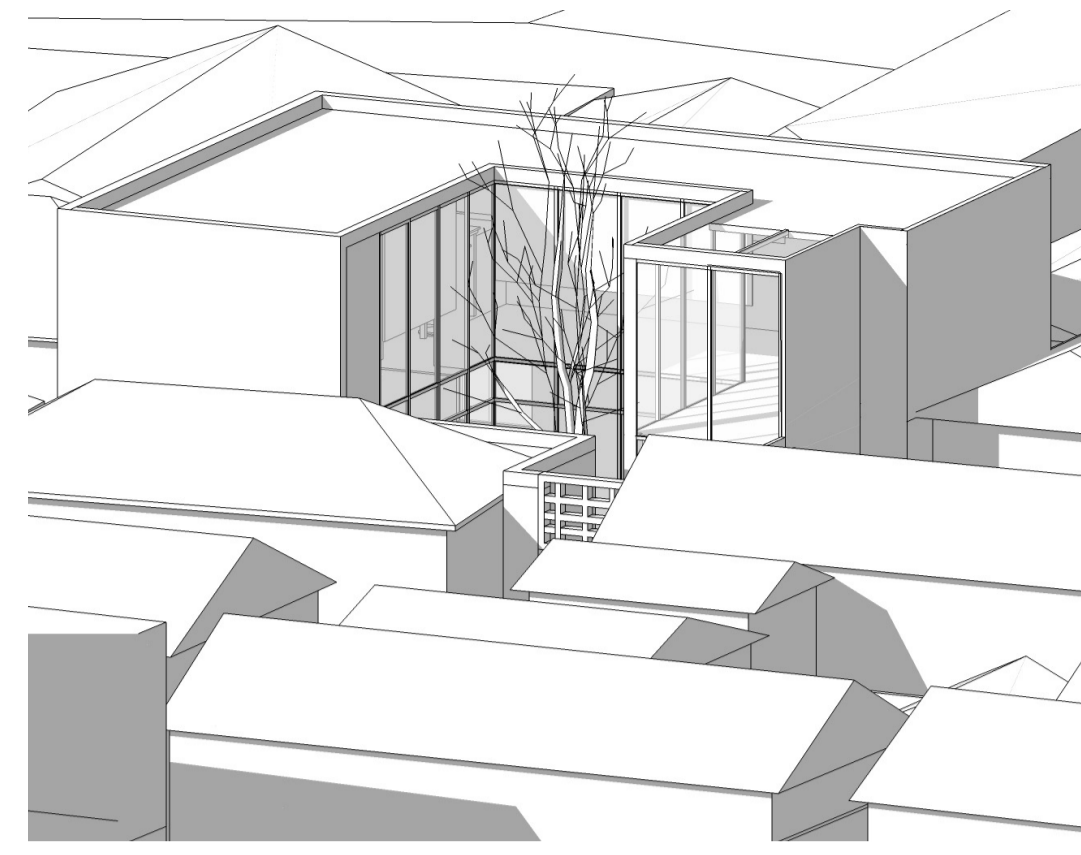
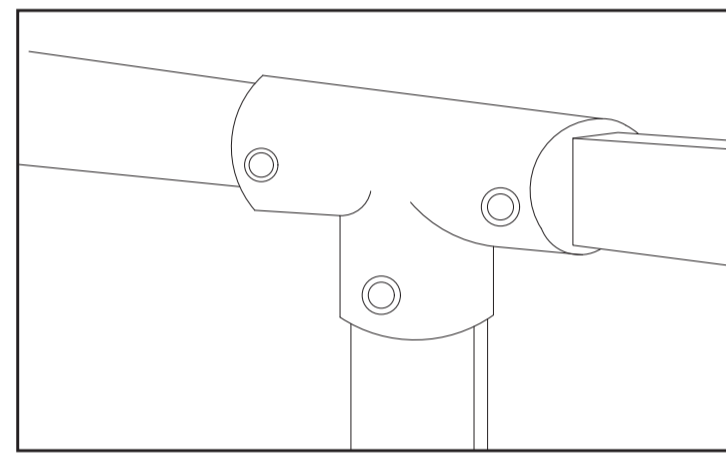
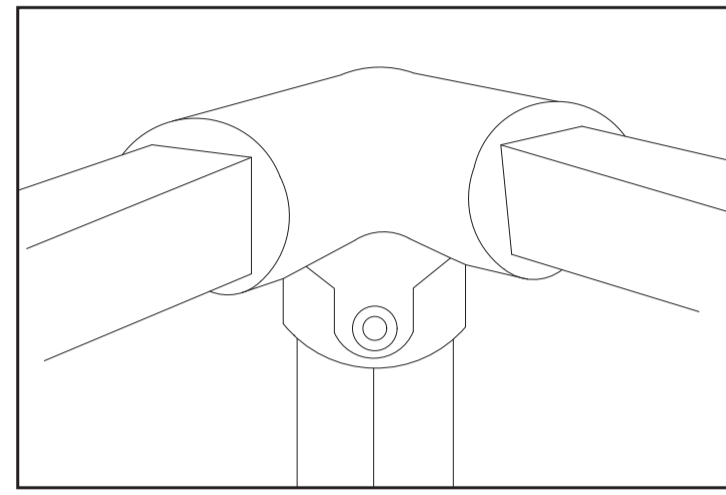


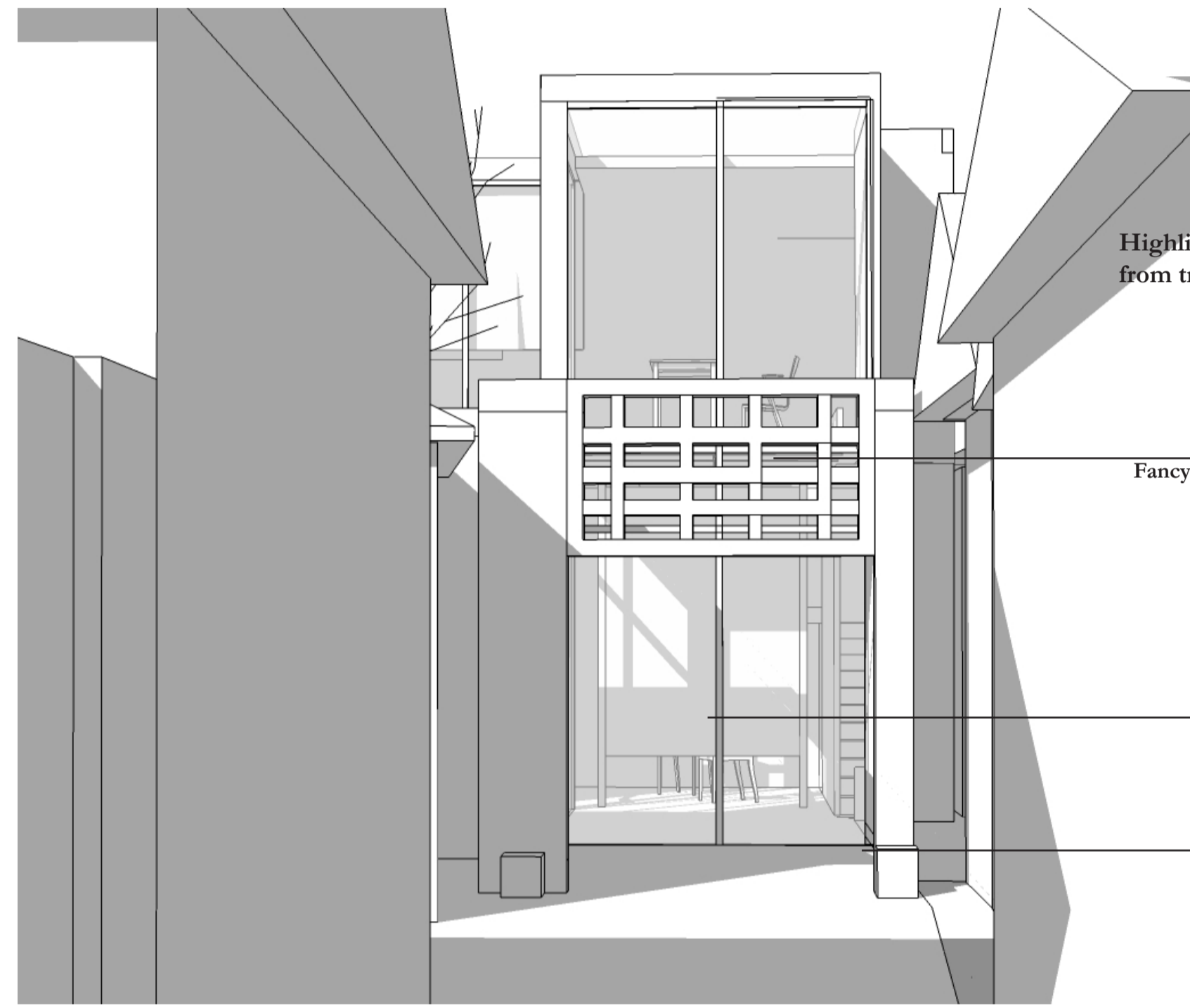
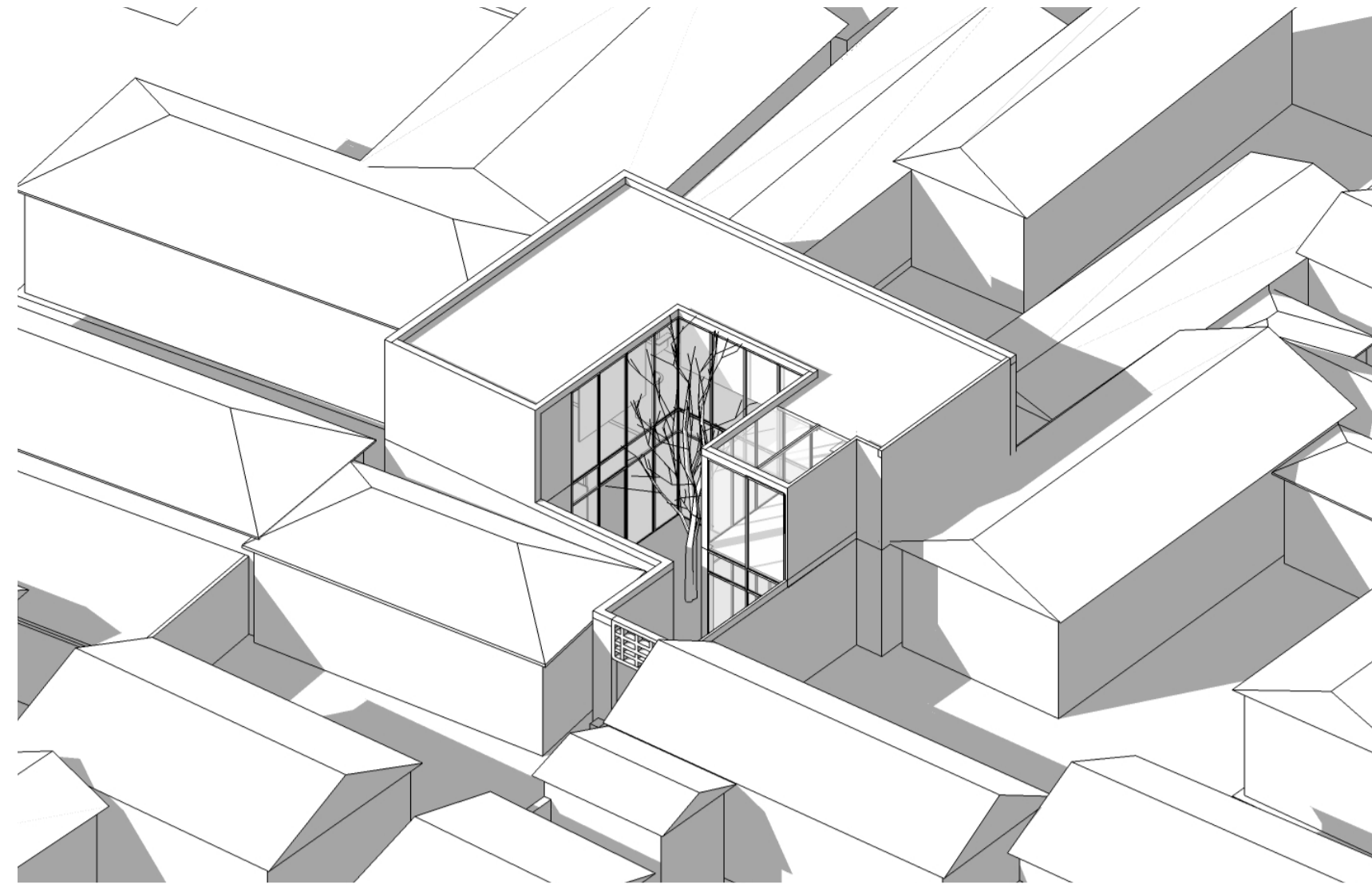
Combination with exhibition system and window



Combined the idea of Franco Albini and another case from Triennale Milano contributed my exhibition system, mainly using the flexible system can be easily installed and removed to many forms and using the glass window and pillars to make the logic of our grid.



Drawings of connectors



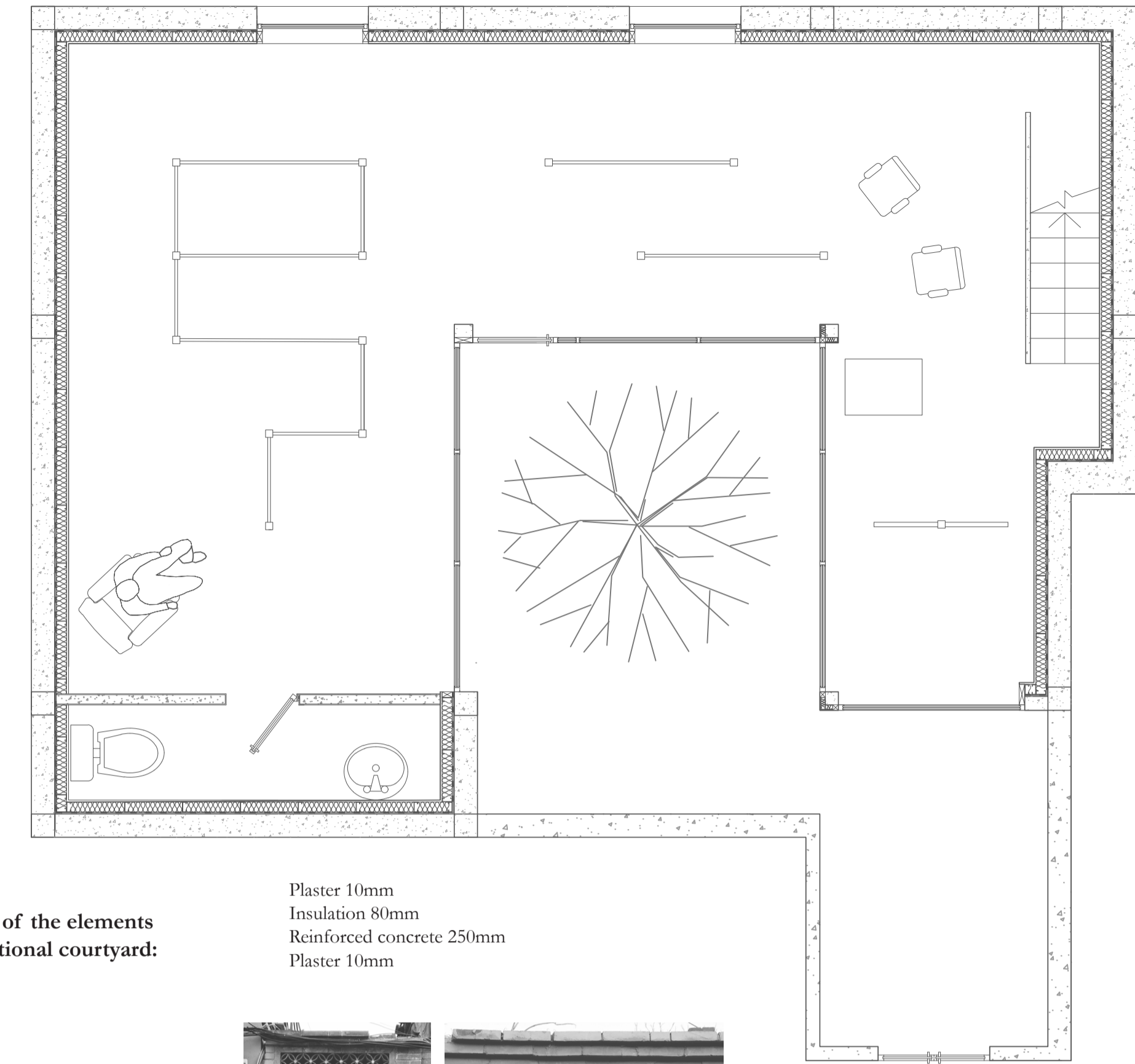
Highlight of the elements from traditional courtyard:

Fancy Hollow Wall

Screen Wall

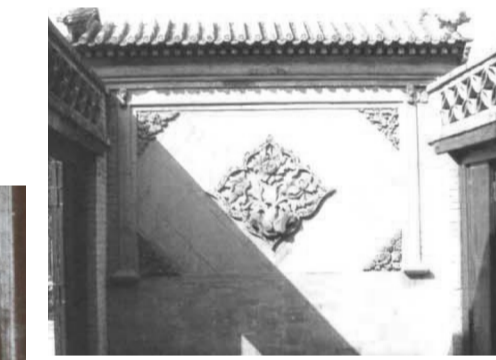
Drum-shaped bearing stone

Entrance

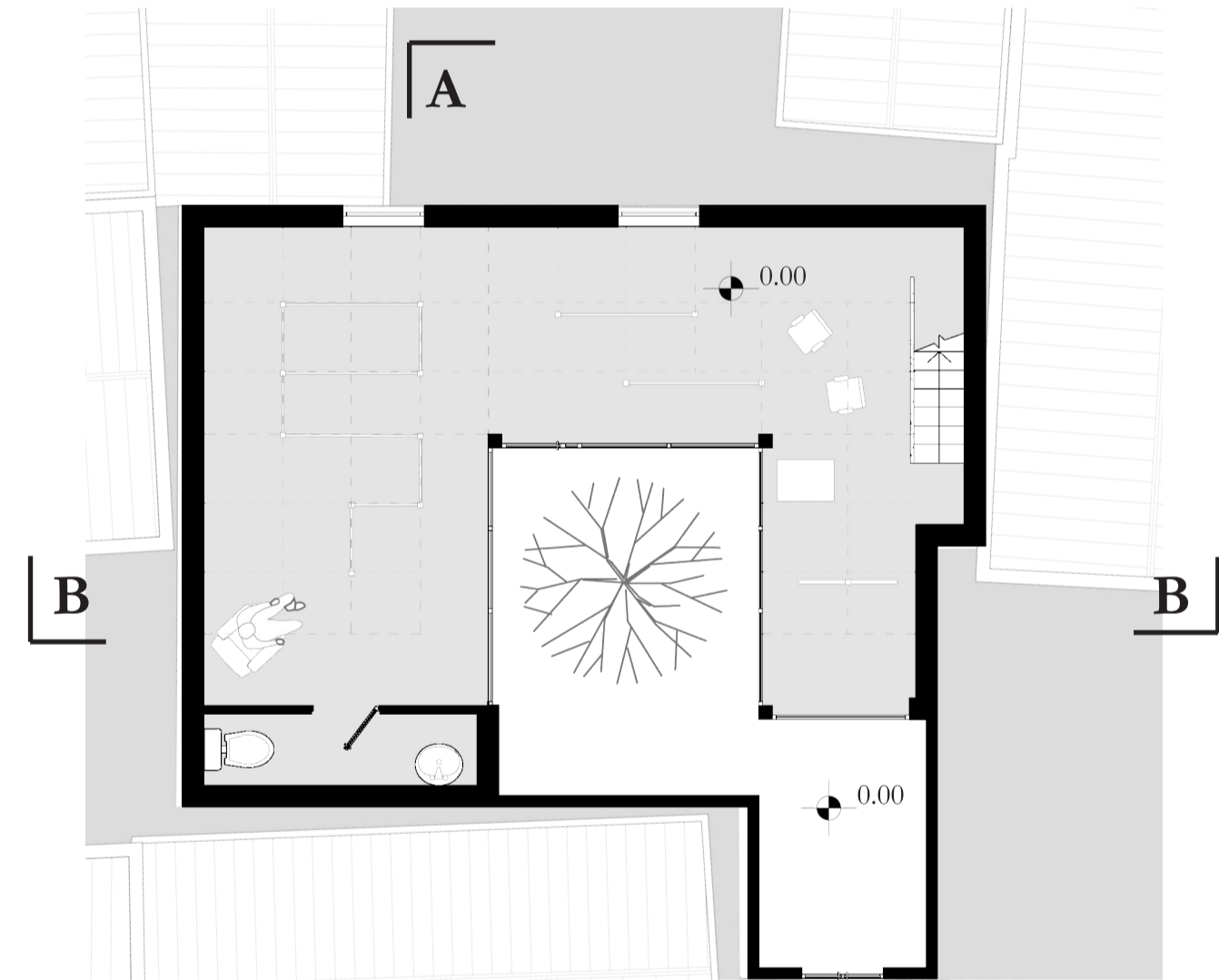
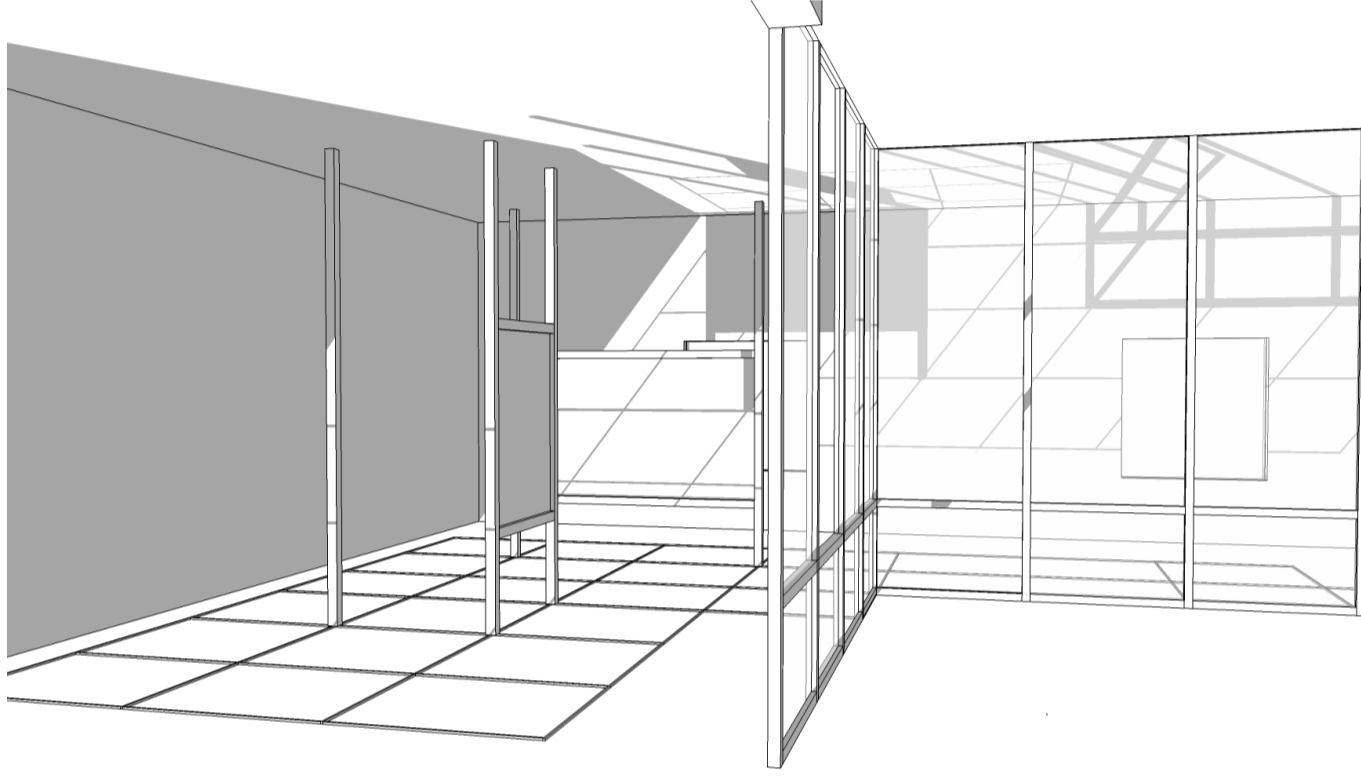


Ground floor 1:50

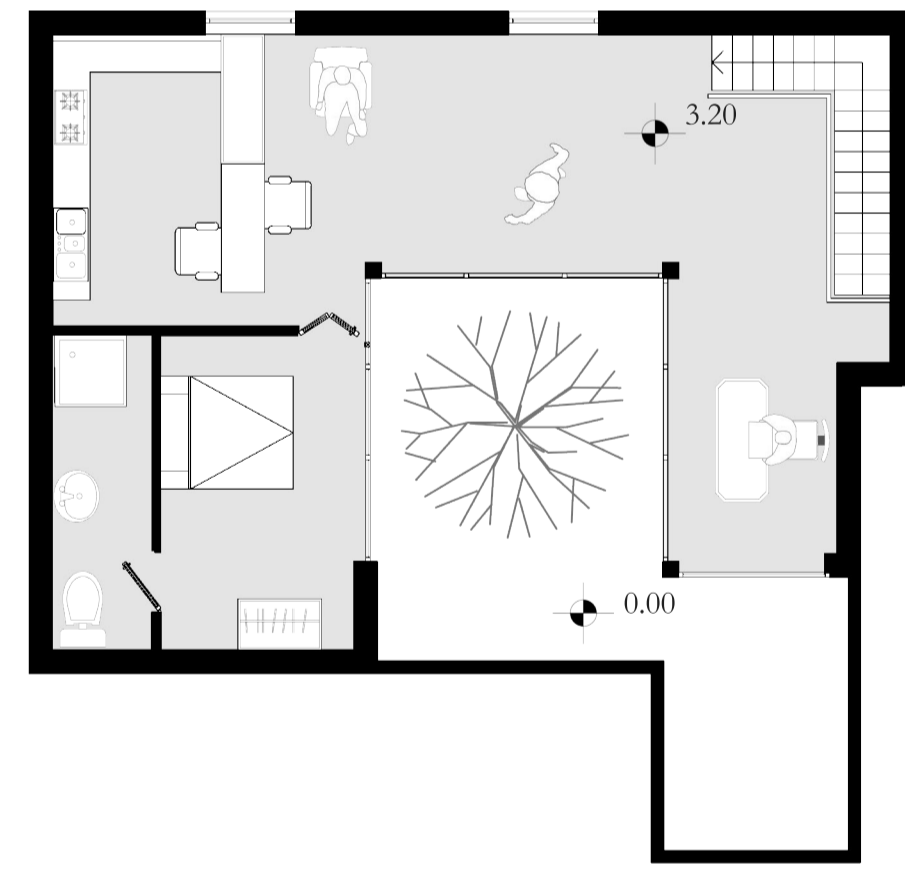
Plaster 10mm  
Insulation 80mm  
Reinforced concrete 250mm  
Plaster 10mm



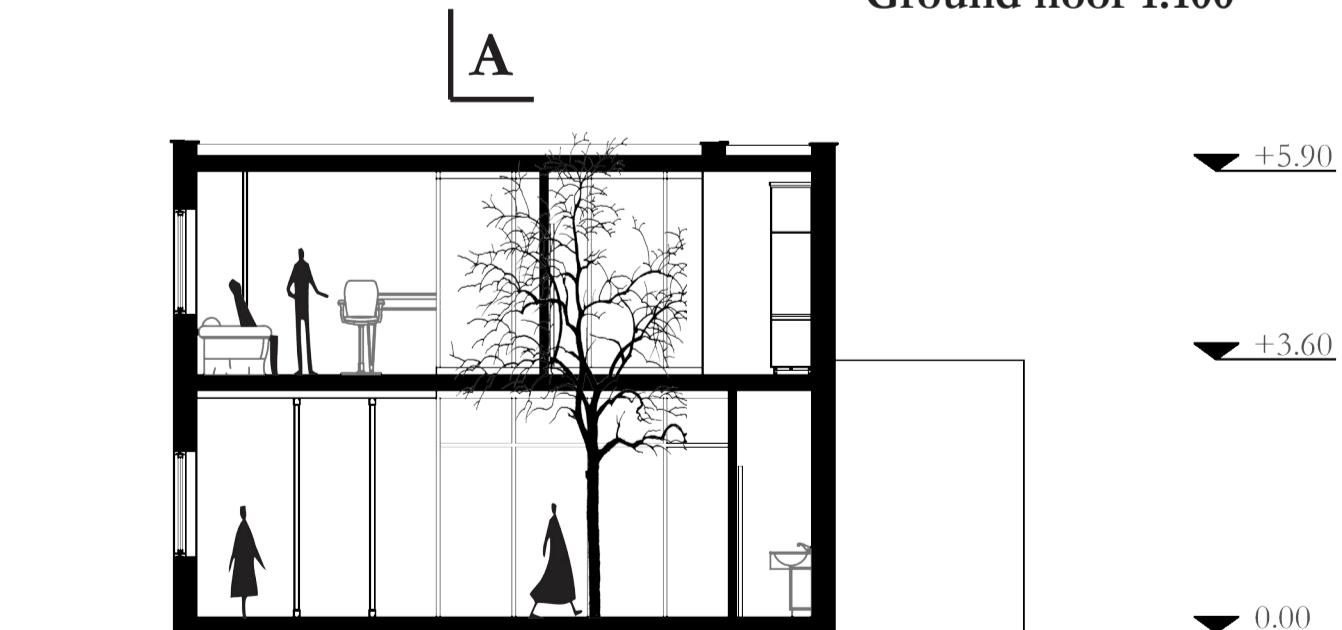
Plaster 15mm-  
Waterproof membrane 10mm  
Thermal insulation 80mm  
Gravel 40mm  
Floor cladding 20mm  
Reinforced concrete 100mm  
Acoustic insulation 50mm  
Screed coat 10mm



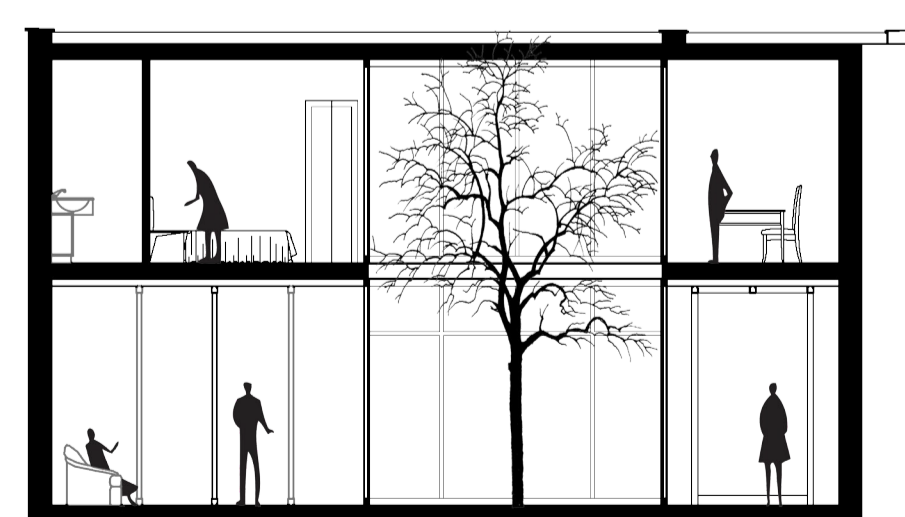
Ground floor 1:100



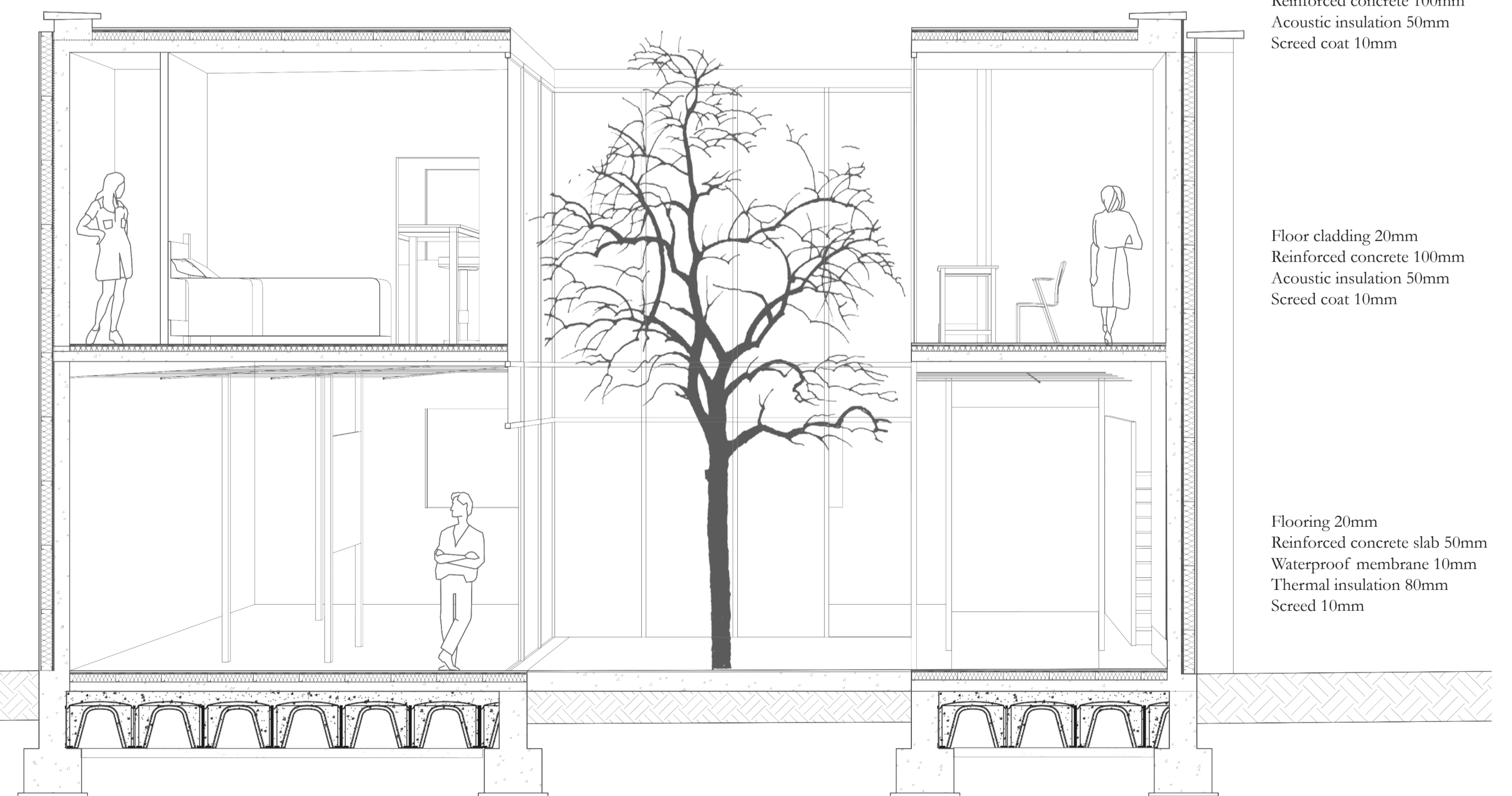
First floor 1:100



Section A-A 1:100



Section B-B 1:100



Preprestive Section 1:50

Floor cladding 20mm  
Reinforced concrete 100mm  
Acoustic insulation 50mm  
Screed coat 10mm

Flooring 20mm  
Reinforced concrete slab 50mm  
Waterproof membrane 10mm  
Thermal insulation 80mm  
Screed 10mm