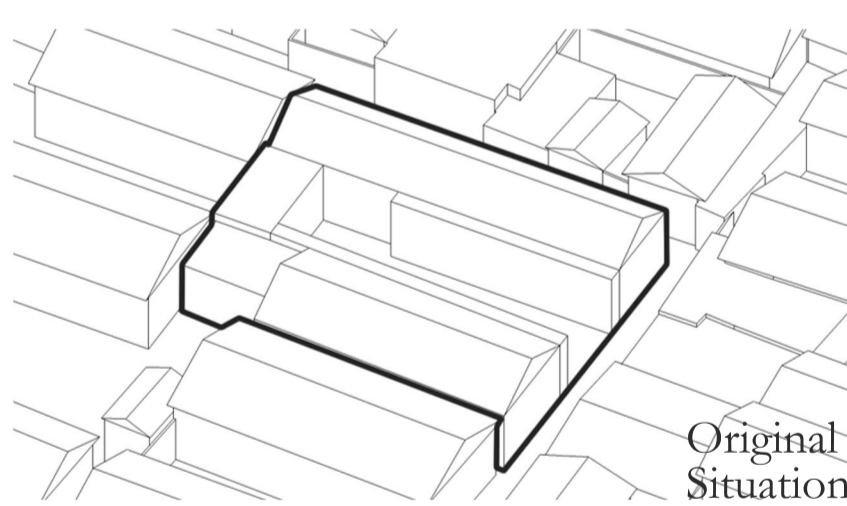


Tea House

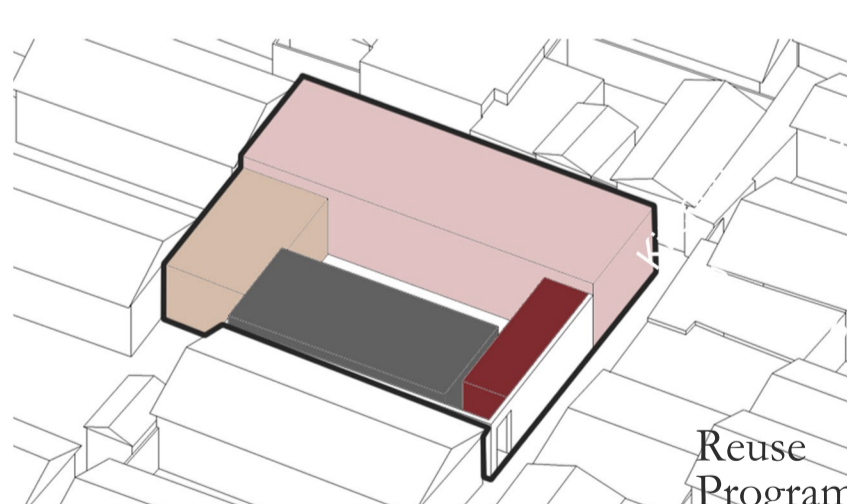
Current Situation



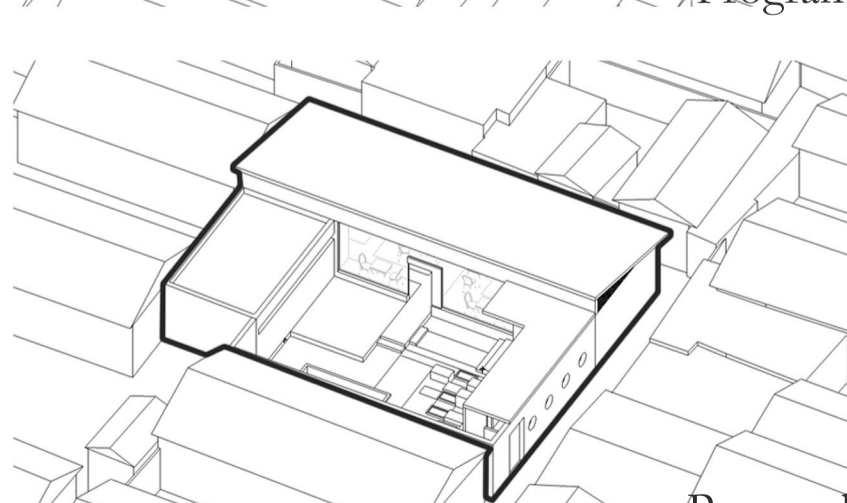
Strategy



Original Situation

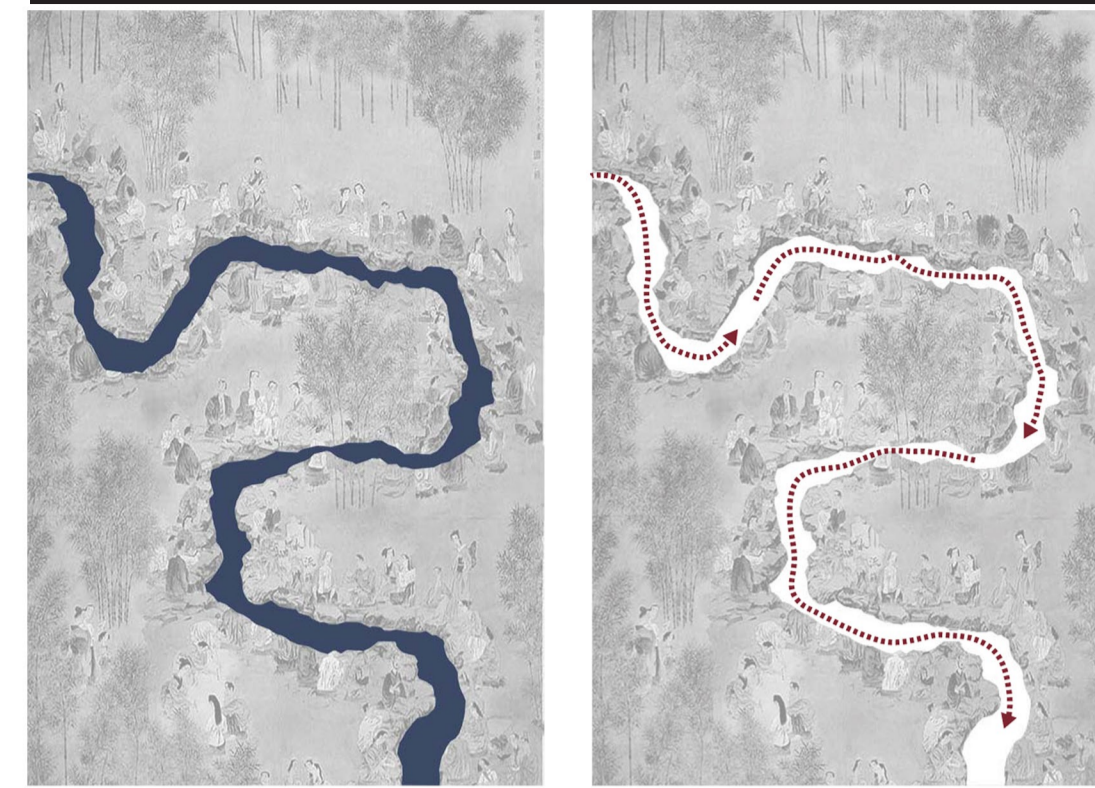


Reuse Program

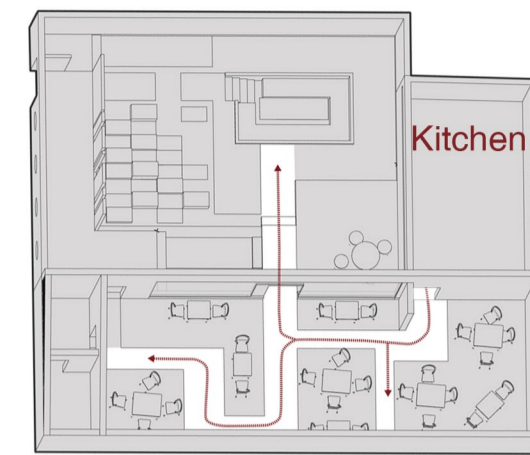


Proposal

Design Theme No.1: Concept



The flowing cup is a game original in China. After the rituals were held in March of the summer calendar, everyone sat on both sides of the canal, placing wine cup in the upper stream, and the wine cup went down the river, stopping in front of anyone, who would take a cup of drink.



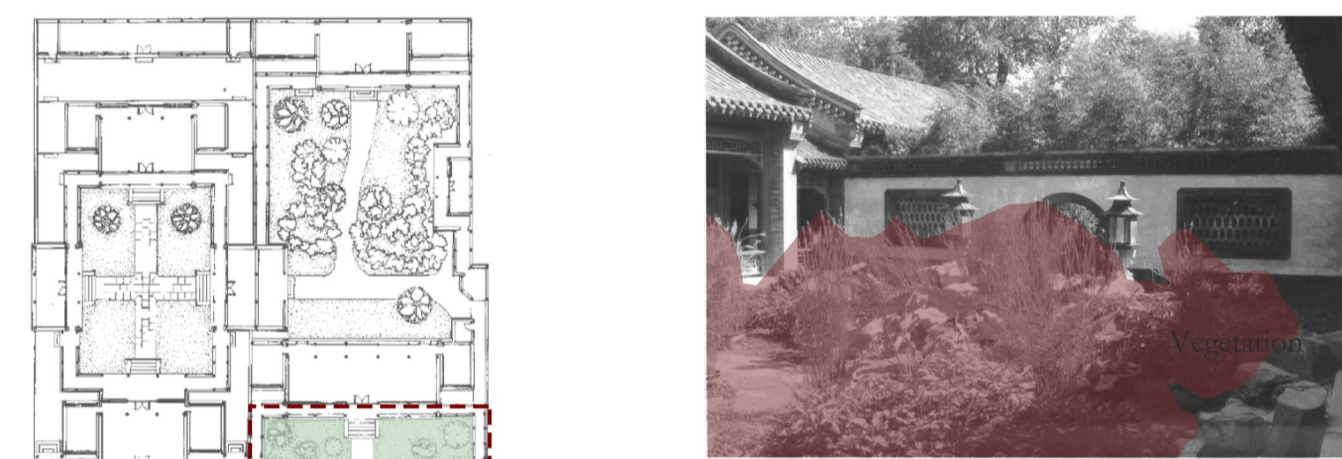
Design Theme No.2: Elements



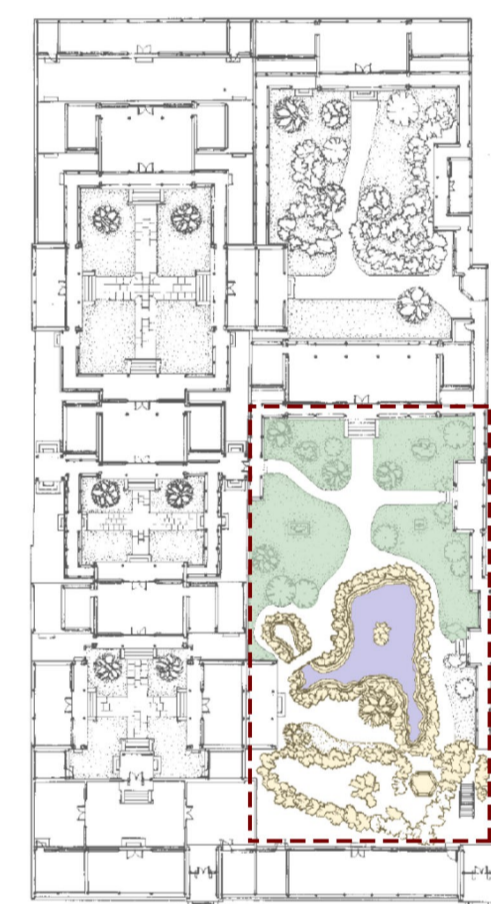
Water



Rocks



Vegetation



Choose three basic elements in traditional garden, respectively: water, rocks and vegetation.

- Water
- Rocks
- Vegetation



- Rocks
- Water
- Vegetation

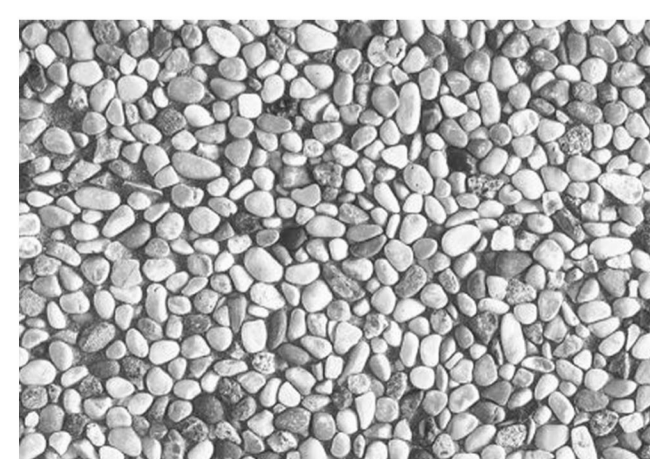


- Area for moving
- Area for staying

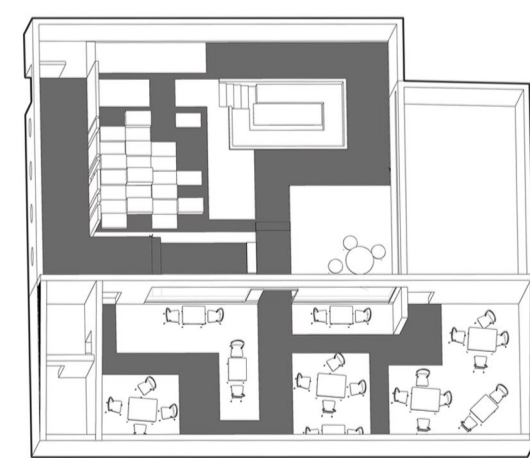
Design Theme No.3: Material



There is no water in traditional Japanese rock garden, they use sands and tiny stones to symbolize the water.



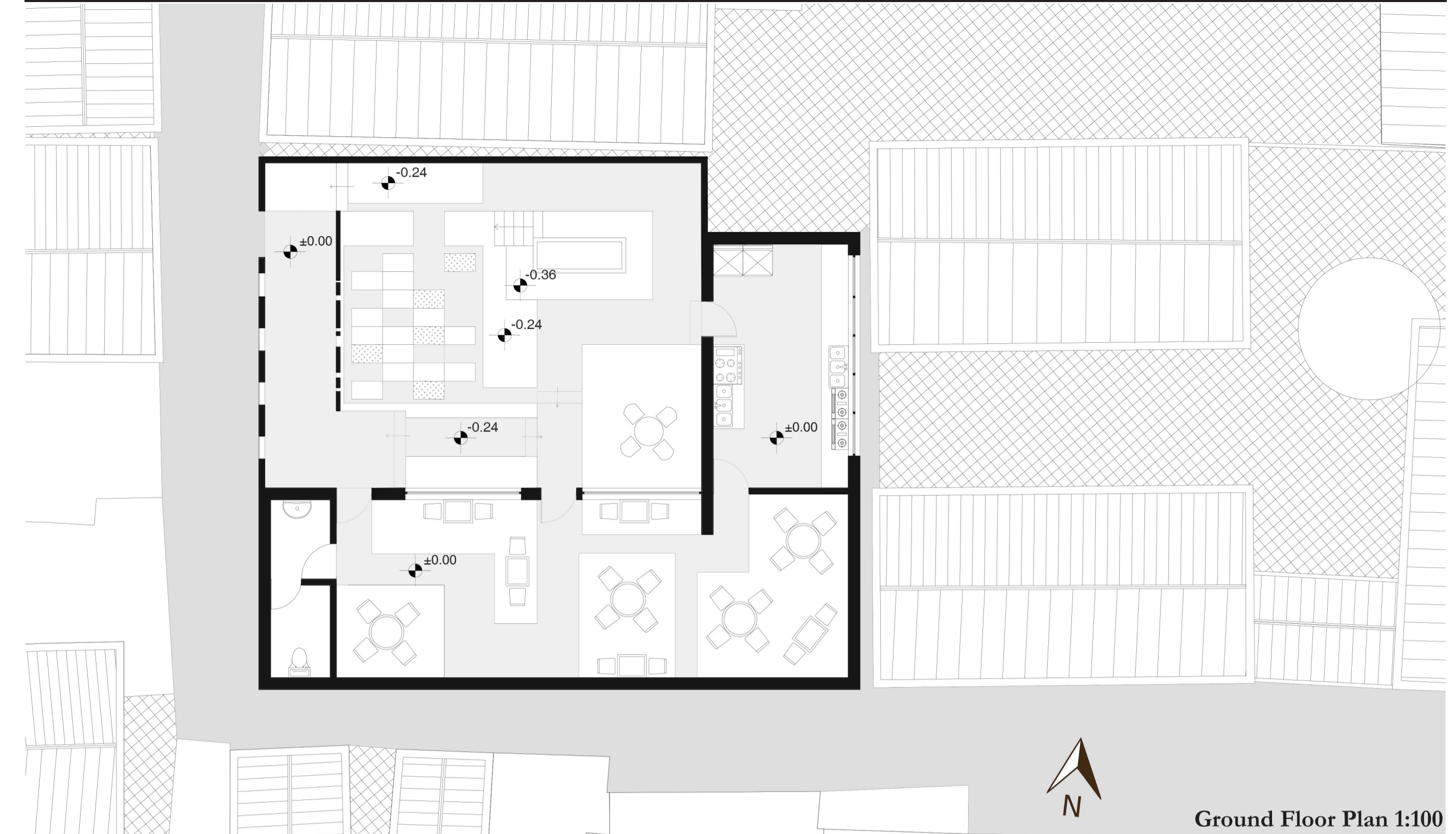
Because the path which is made of sands and tiny stones is very difficult to clean, we choose another material to substitute it that is Lastra Ghiaino Lavato, recalls the idea of the organic material but it's more practical.



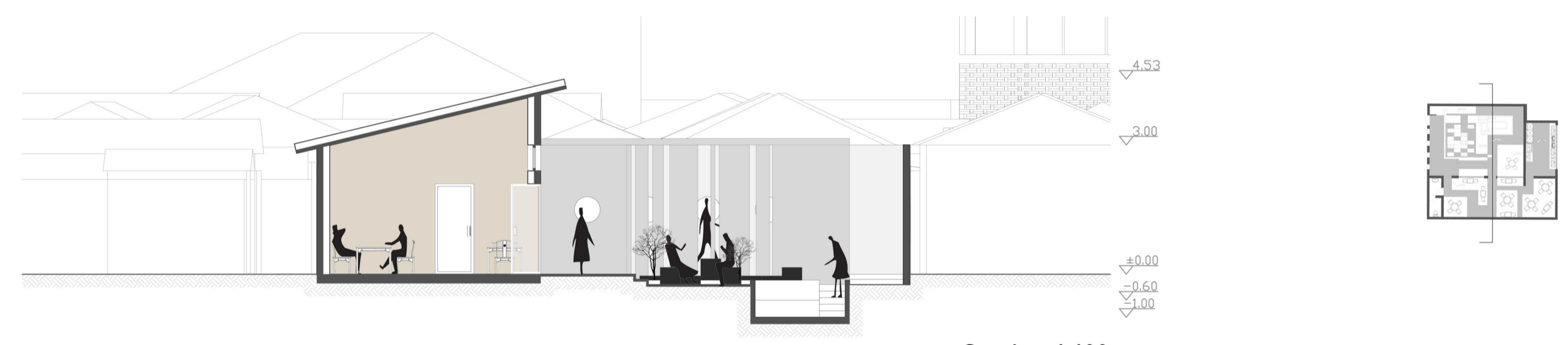
- Lastra Ghiaino Lavato

In the tea house, the cups are not delivered by the water but by the waiter, so the movement of the waiter can be assimilated with the canal in the ancient game 'The Flowing Cup'.

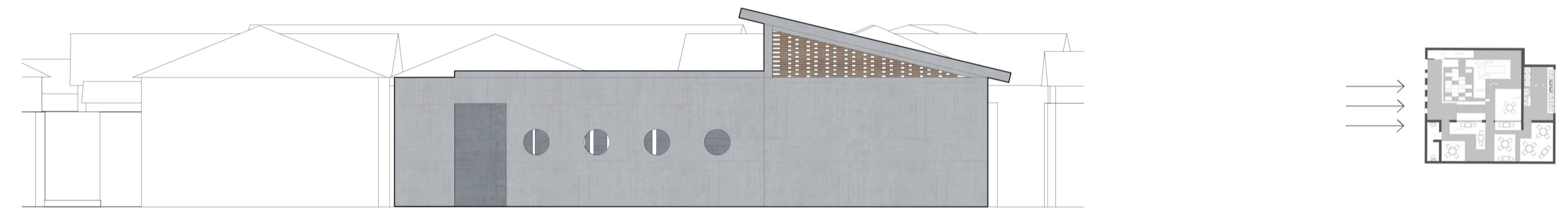
Drawings



Ground Floor Plan 1:100

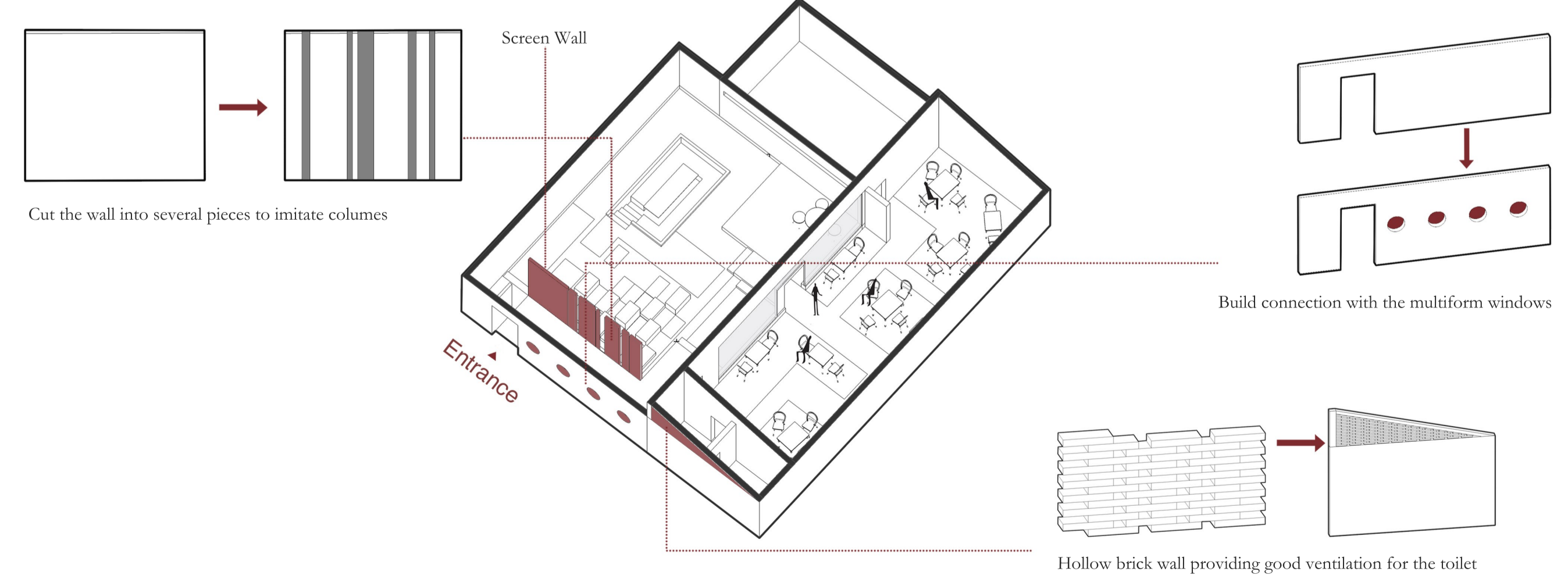


Section 1:100



West Elevation 1:100

Axonomic Diagram-Highlighting the Integration of Traditional Architectural Elements



Cut the wall into several pieces to imitate columns

Build connection with the multiform windows

Hollow brick wall providing good ventilation for the toilet