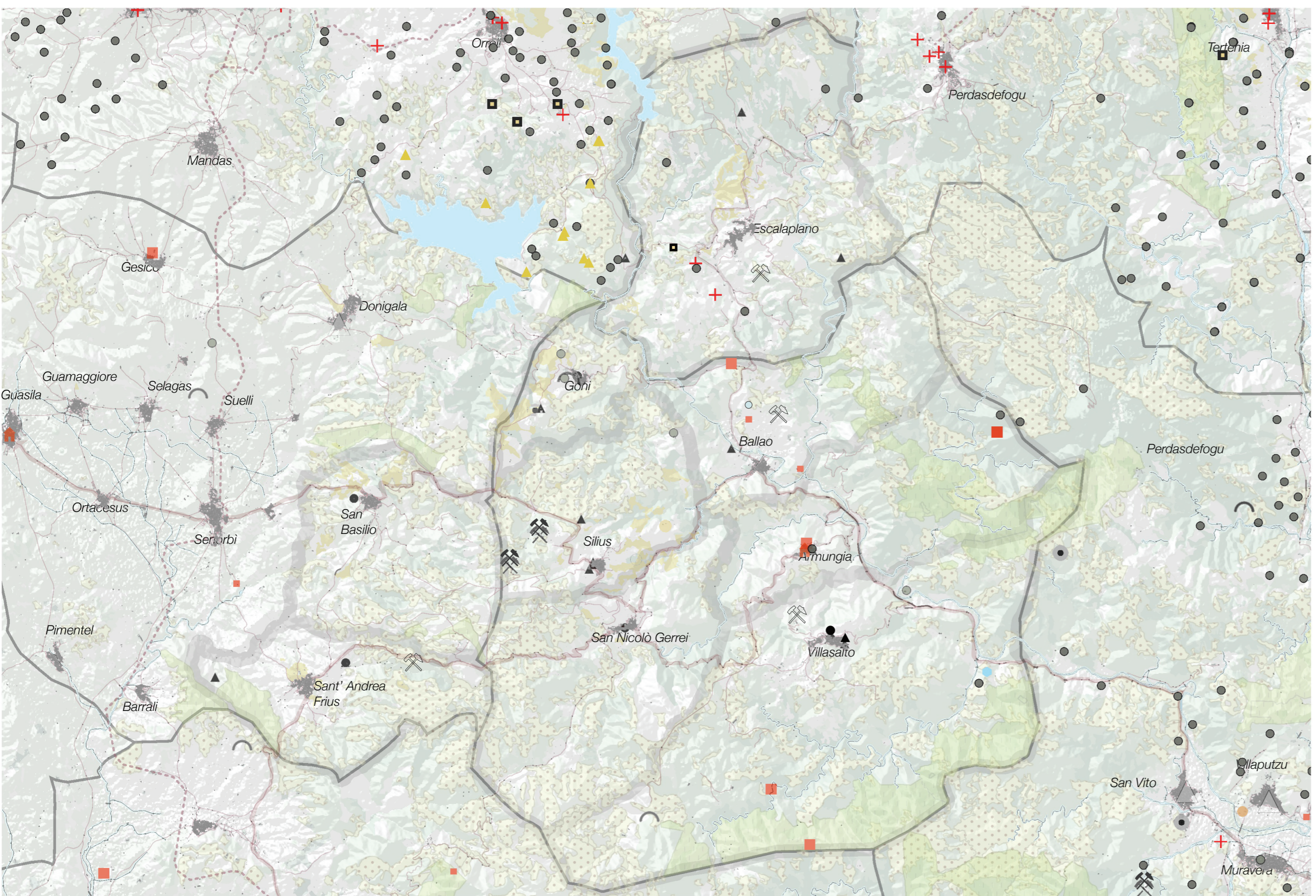


- Field of action
- Main Roads
- Gerrei Municipalities
- Built area

S PROCEDURAL

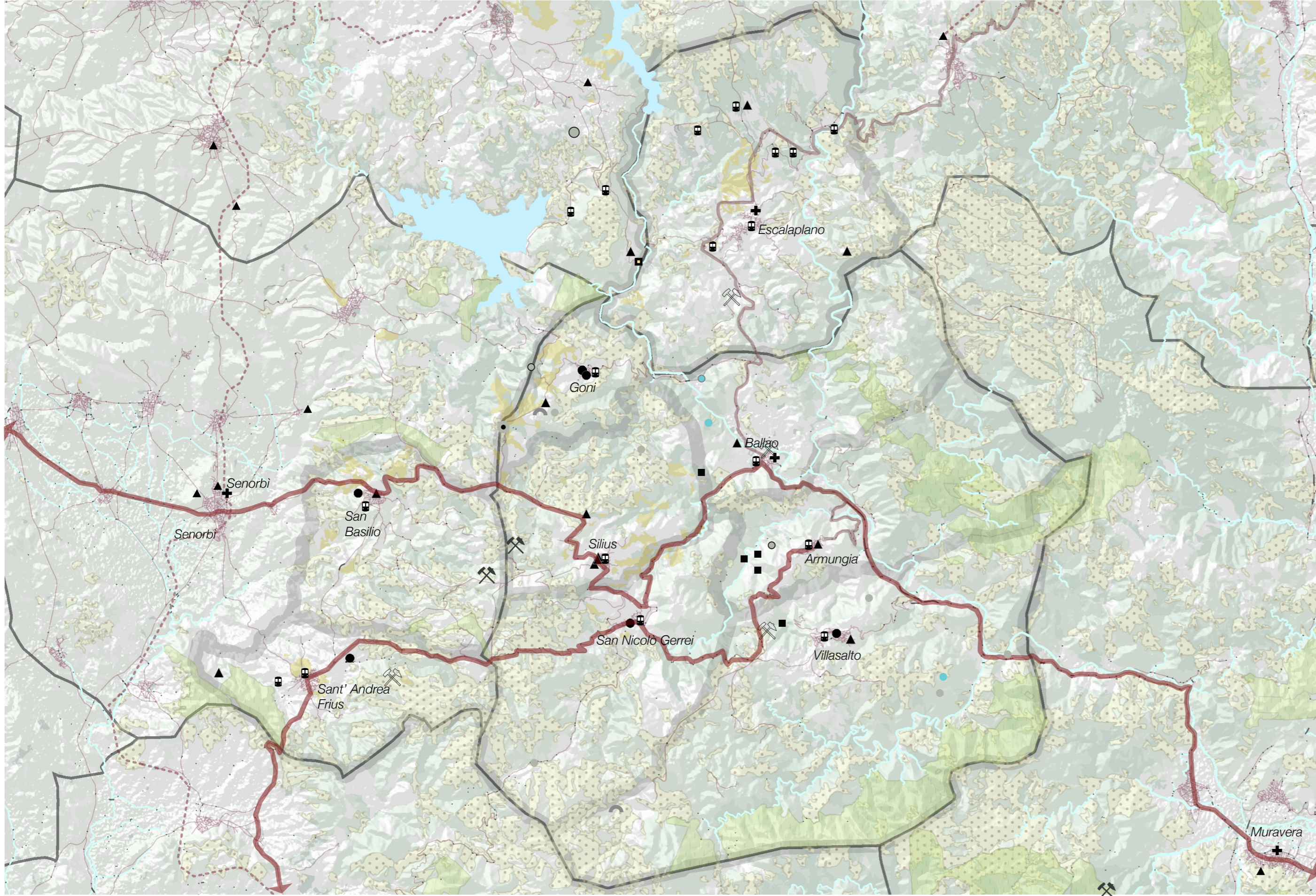
<b>PHYSIOGRAPHY</b> Morphology Morphology_elevation  <b>BLUE INFRASTRUCTURE</b> Body of water Body of water_streams Body of water_lakes Shoreline  <b>GREEN INFRASTRUCTURE</b> Vegetation coverage Vegetation type	<b>GREY INFRASTRUCTURE</b> Railway Road network Urban Area  <b>BORDERS</b> Administrative borders_municipality  <b>HERITAGE</b> Archeological sites  <b>SERVICES</b> Public firms Bus Stops
--	--



- Field of action
- Main Roads
- Gerrei Municipalities
- "Giants' tumbs"
- Church/ Monastery
- Mine (Dismantled)
- Tower
- Archeological settlement
- Well
- "Domus de Janas"
- shack
- "Monte granatico"
- Necropoli
- Nuraghe
- Castello
- Public agricultural companies

S PROCEDURAL

<b>PHYSIOGRAPHY</b> Morphology Morphology_elevation  <b>BLUE INFRASTRUCTURE</b> Body of water Body of water_streams Body of water_lakes Shoreline  <b>GREEN INFRASTRUCTURE</b> Vegetation coverage Vegetation type	<b>GREY INFRASTRUCTURE</b> Railway Road network Urban Area  <b>BORDERS</b> Administrative borders_municipality  <b>HERITAGE</b> Archeological sites  <b>SERVICES</b> Public firms Bus Stops
--	--



- Field of action
- Main Roads
- Gerrei Municipalities
- Main Connections
- Secondary Connections
- Built area
- Garrigue (spontaneous)
- Cork
- Protected forests
- Green intensity
- Public agricultural firms:
  - ▲ Processed resources
  - Primary resources
- + Emergency Medical care
- Bus Stop
- Main nuraghe
- (ruins)
- Museum
- Mine (Dismantled)
- Main domus de Janas
- ▲ Giants' tumb- to be reconstructed
- Well
- (destroyed)
- Necropoli



**GERREI**  
 -9 municipalities  
 -527 km<sup>2</sup>  
 -9852 inhabitants  
 -477 family-owned agricultural businesses

S PROCEDURAL

<b>PHYSIOGRAPHY</b> Morphology Morphology_elevation  <b>BLUE INFRASTRUCTURE</b> Body of water Body of water_streams Body of water_lakes Shoreline  <b>GREEN INFRASTRUCTURE</b> Vegetation coverage Vegetation type	<b>GREY INFRASTRUCTURE</b> Railway Road network Urban Area  <b>BORDERS</b> Administrative borders_municipality  <b>HERITAGE</b> Archeological sites  <b>SERVICES</b> Public firms Bus Stops
--	--