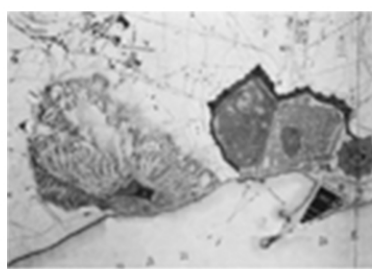


1| The urban formation stage(230 BC - 1850s)

From 230 BC to 1850 AD, 2000 years ago, Barcelona developed from a 10-hectare residential area to a colonial fortress of 260 hectares. In the 5th century BC, due to trade reasons, the earliest settlements in the Barcelona area emerged in the coastal zone and developed into a trading port.

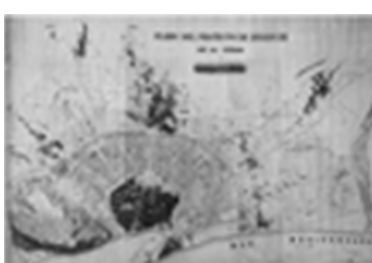


It is not only a port city with the Romans of Lun Bula, but also a colony with the densely populated fortress and the encircled La Barceloni. With the decline of the rule of the kingdom of Spain, the city of Barcelona was once again prosperous.



2| The Urban expansion stage (1850s-1980s)

In the middle of the 19th century, with the development of the industrial revolution, the population of Barcelona increased sharply. In order to meet the needs of the new development of the city, Barcelona has broken through the walls and developed outwards. The two options came from the two political forces behind the Antai Rovira and Ildefons Cerdà.

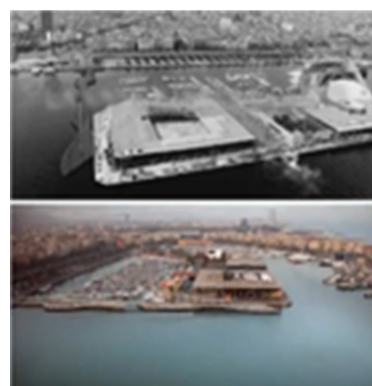


The Eixample master plan was devised as a necessary extension to Barcelona's medieval city walls during the second half of the 19th century. By 1865, the wall of the city of Barcelona was basically completed. At the core of Cerdà's master plan was the creation of the manzana – a city block structure that had been meticulously studied and detailed. Into this came Cerdà.

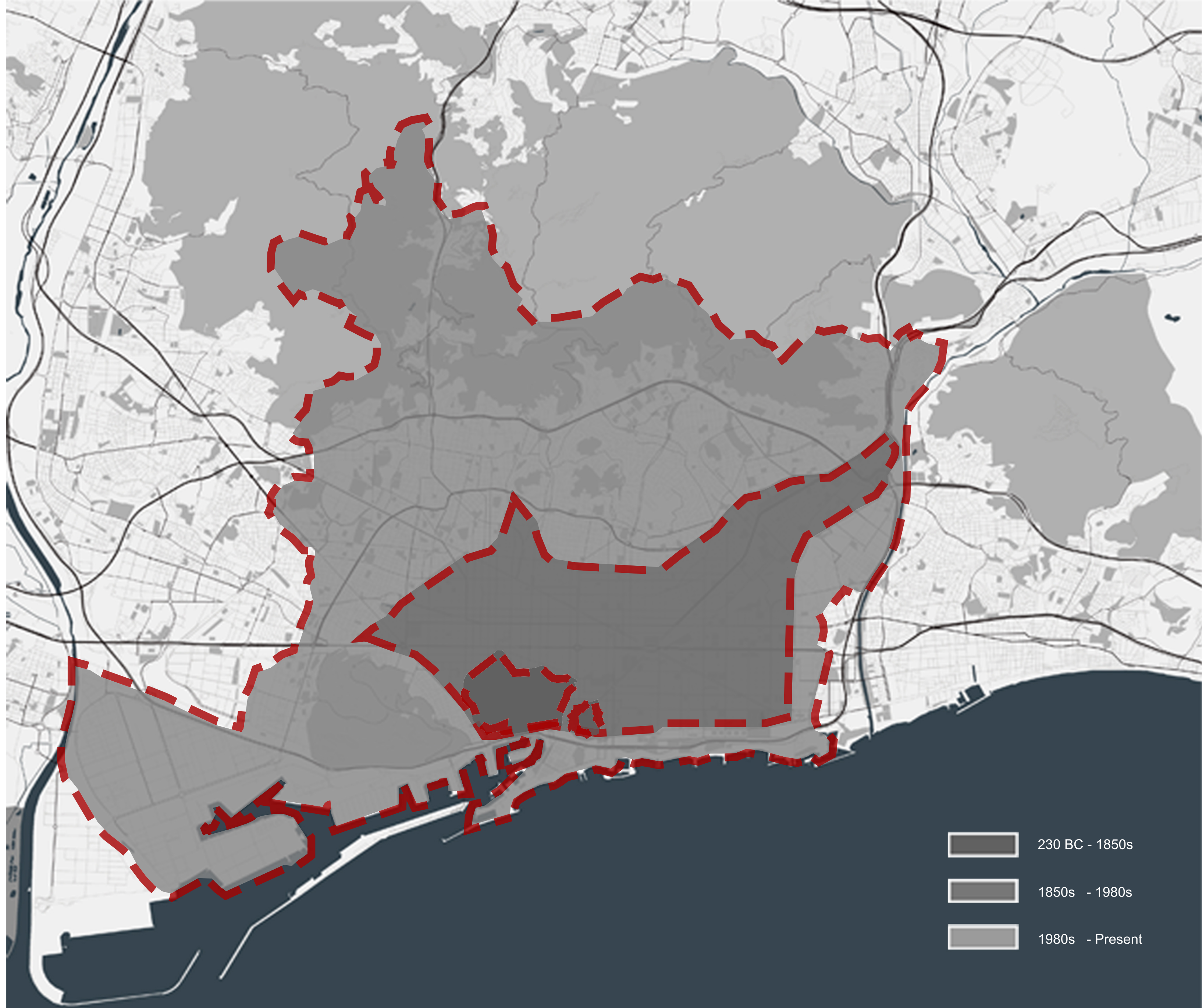


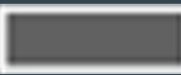

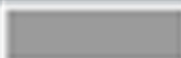
3| The Urban renewal stage (1980s to the present)

In the 1970s, Barcelona's traditional industries began to decline, and the opportunities for work were reduced. The city began to decline. Since 1980, the Barcelona government has transformed and built more than 4,500 public spaces through the events of major events.



The bidding for the Olympic Games is an important opportunity for the realization of the redevelopment plan of the city of Barcelona. A series of waterfront redevelopment projects have been implemented around the Olympic Games on a large scale. A large-scale city was built throughout the old and new districts of Barcelona. The renovation included the main traffic roads in the city, strengthening the construction of the foundation, and the construction of the village in the waterfront.



-  230 BC - 1850s
-  1850s - 1980s
-  1980s - Present



1| The urban formation stage(230 BC - 1850s)

2| The Urban expansion stage (1850s-1980s)

3| The Urban renewal stage (1980s to the present)