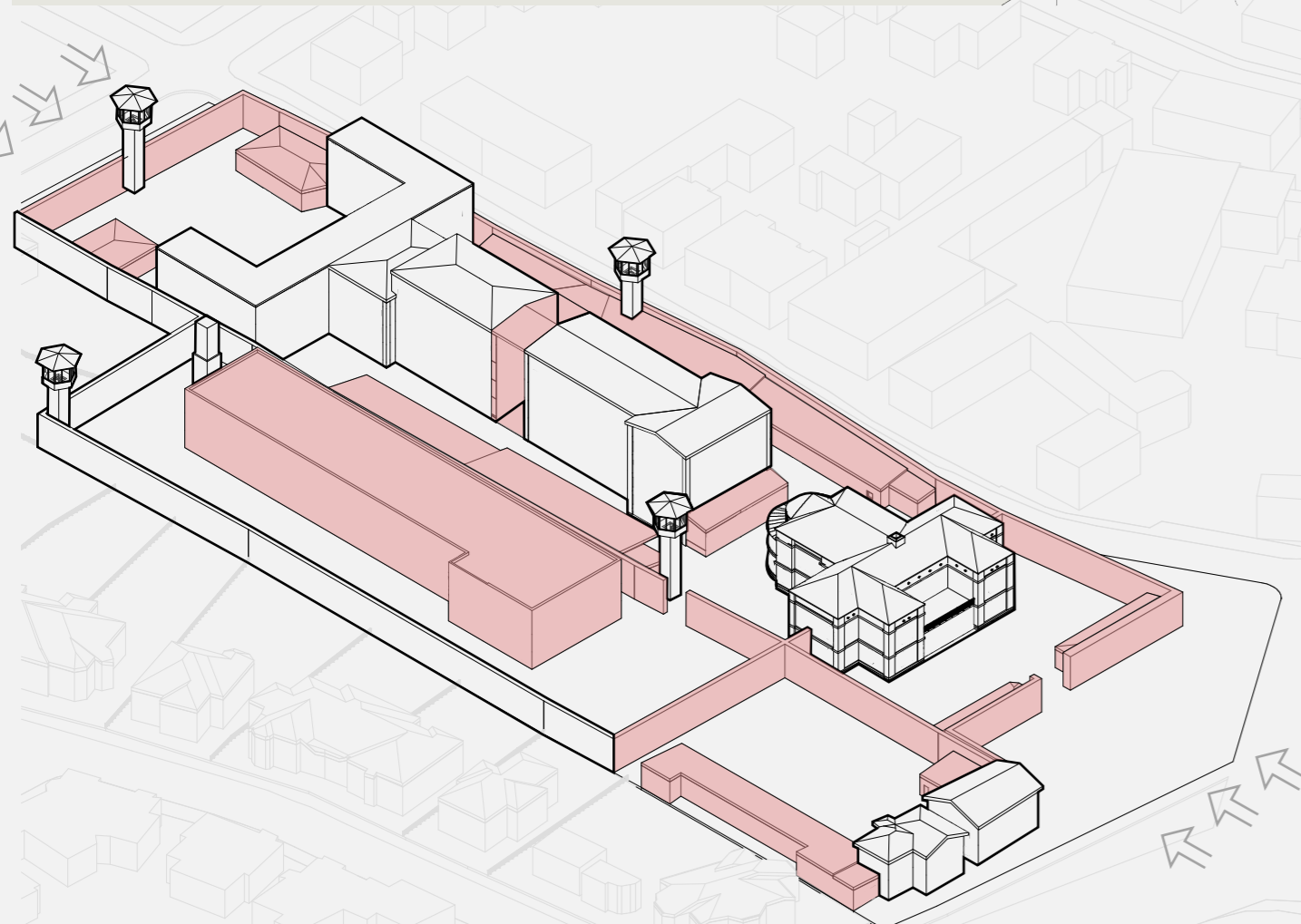
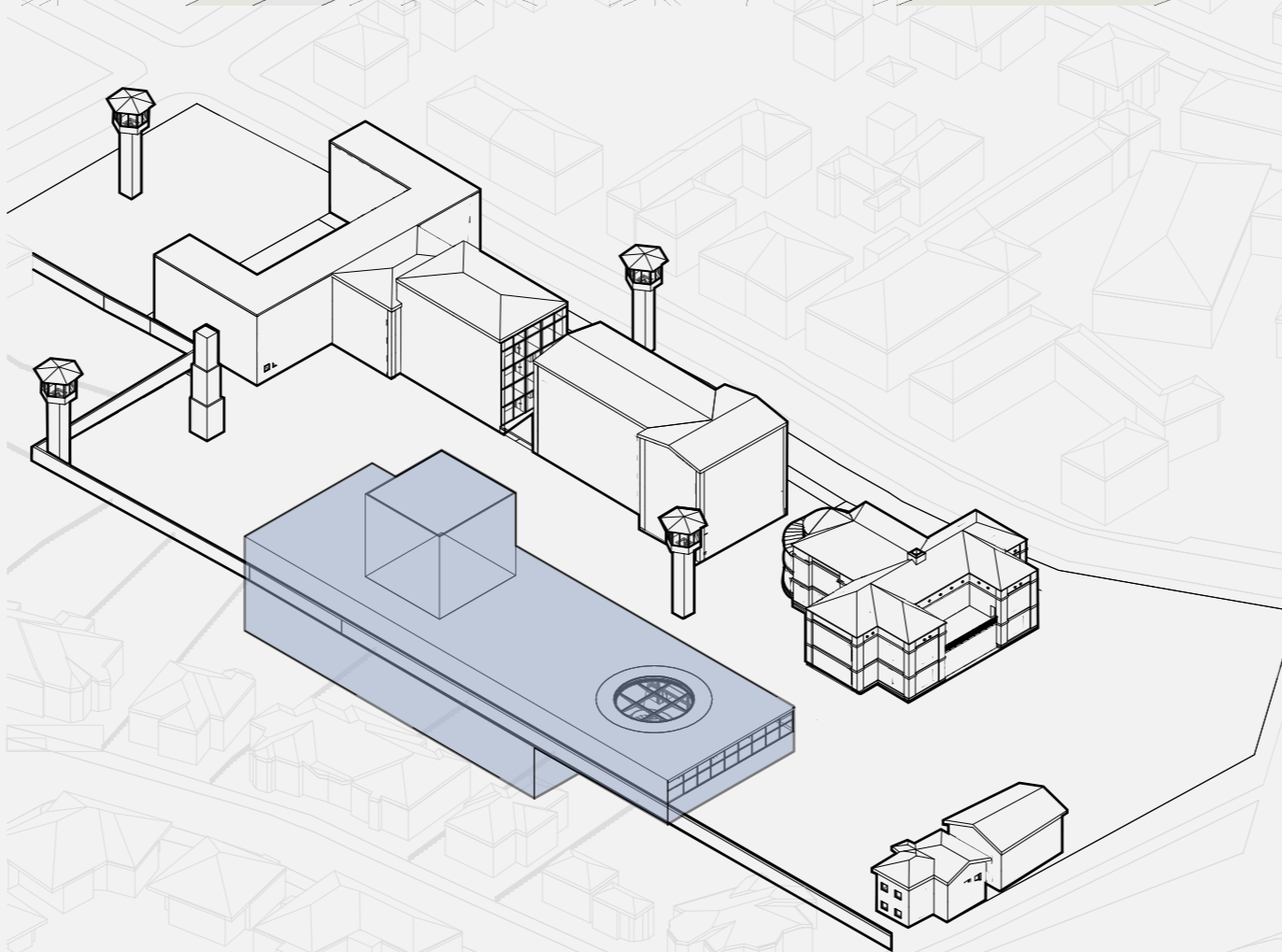


# AXONOMETRIC 1:500



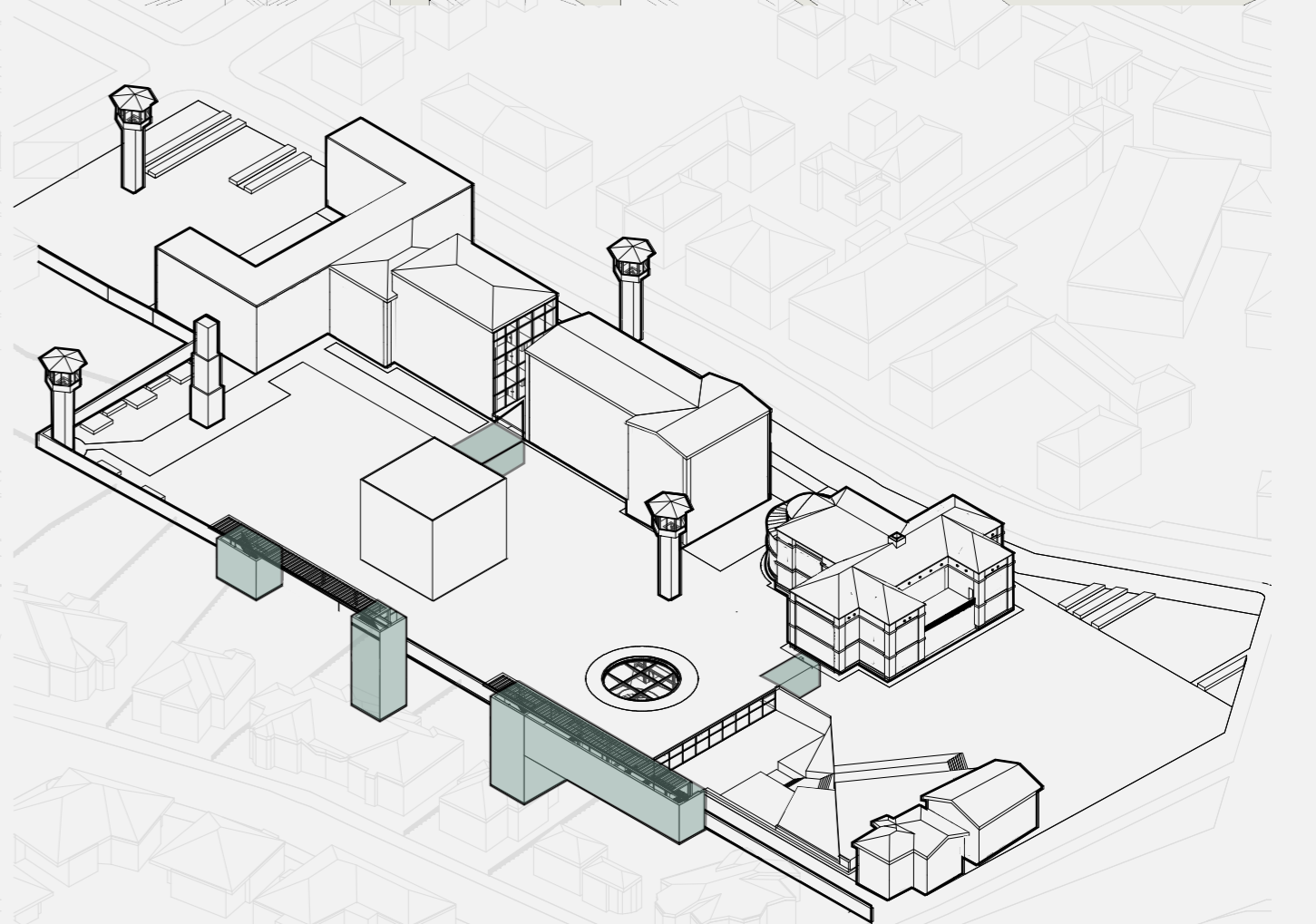
**EXISTING STRUCTURES AND ACCESS 1:1000**

The late additions made to the prison complex were removed. The walls were partially removed creating open and public access towards the city centre and residential directions.



**PROPOSED BUILDING 1:1000**

The new volume is buried to receive the new theatre and free the plot surface to create a park.



**CONNECTIONS 1:1000**

The old and new structures are connected using underground tunnels, the inhabited wall is proposed between the residential and public spaces and used as vertical connection and firescape between underground and overground.

