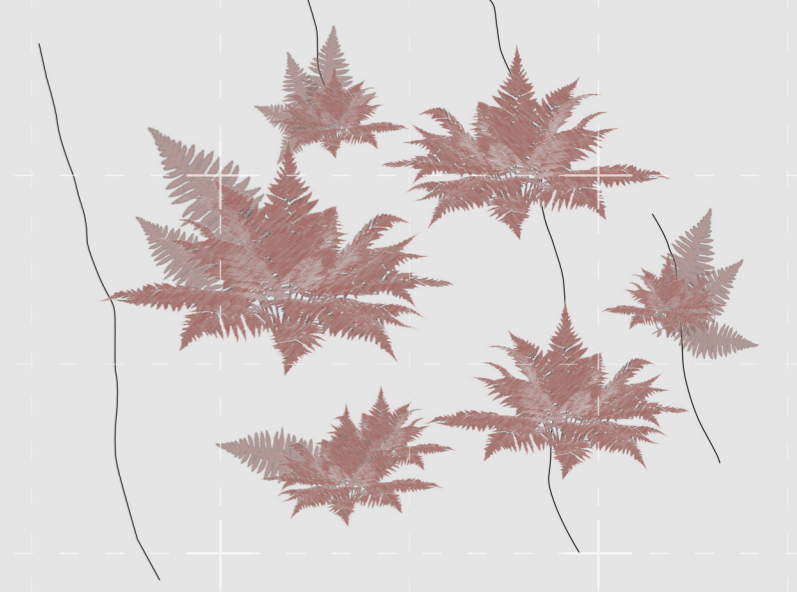


# NATURAL ENVIRONMENT

Main vegetation types classified as Natura 2000 habitats present in the Rupi di Rocca d'Olgisio area:

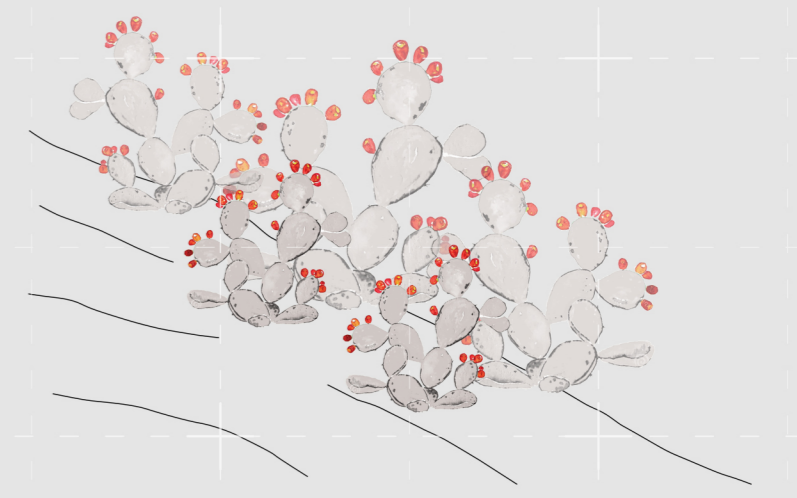
## Roky wall plants Polypodium vulgare group

Altitude: 540m asl  
Exposure: N  
Substrate: sandstone floor  
Order: Androsacetalia Vandellii  
Class: Asplenietea trichomanis  
Habitat: 8220 - Siliceous rock walls with casmophytic vegetation



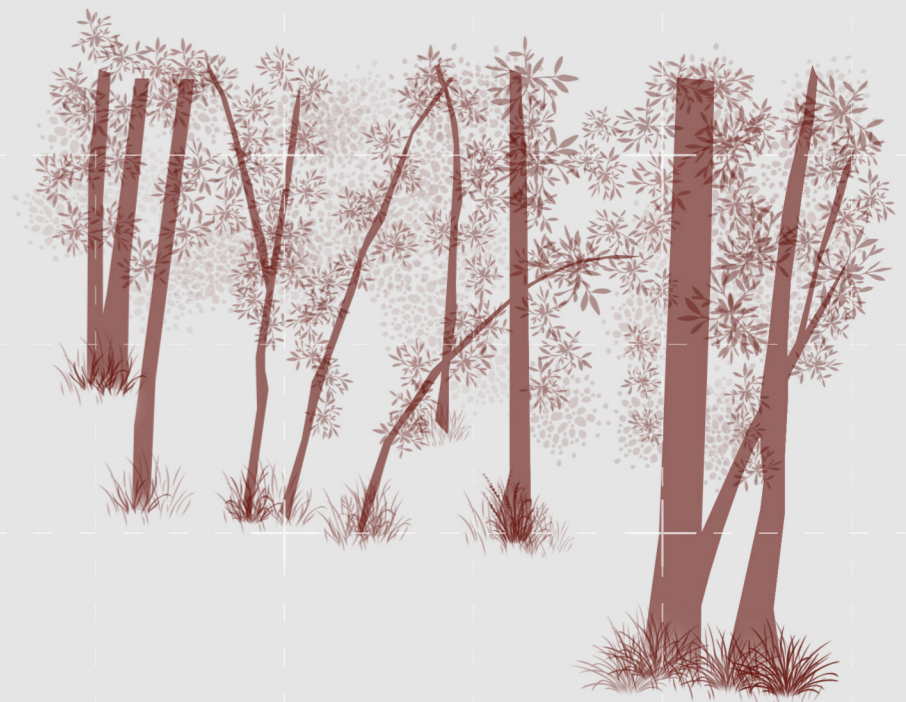
## Roky plateau plants Sedum album and Opuntia humifusa

Altitude: 530-560m asl  
Exposure: SSW, SSE, SE  
Substrate: sandstone floor  
Order: Sedo Scleranthetalia  
Class: Koelerio-Corynephoretea  
Habitat: 8230 - Siliceous rocks with pioneering vegetation of Sedo-Scleranthion or Sedo Albi-Veronicion dillenii



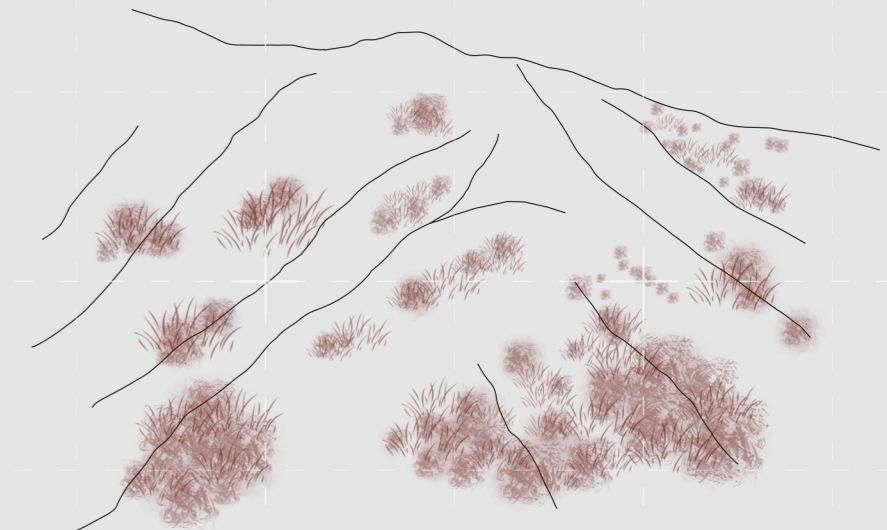
## Chestnuts forest Castanea sativa group

Altitude: 560-580m above sea level  
Exposure: NE  
Substrate: sandstone floor  
Order: Fagetalia Sylvatica  
Class: Quercio-Fagetea  
Habitat: 9260 - Castanea sativa forest



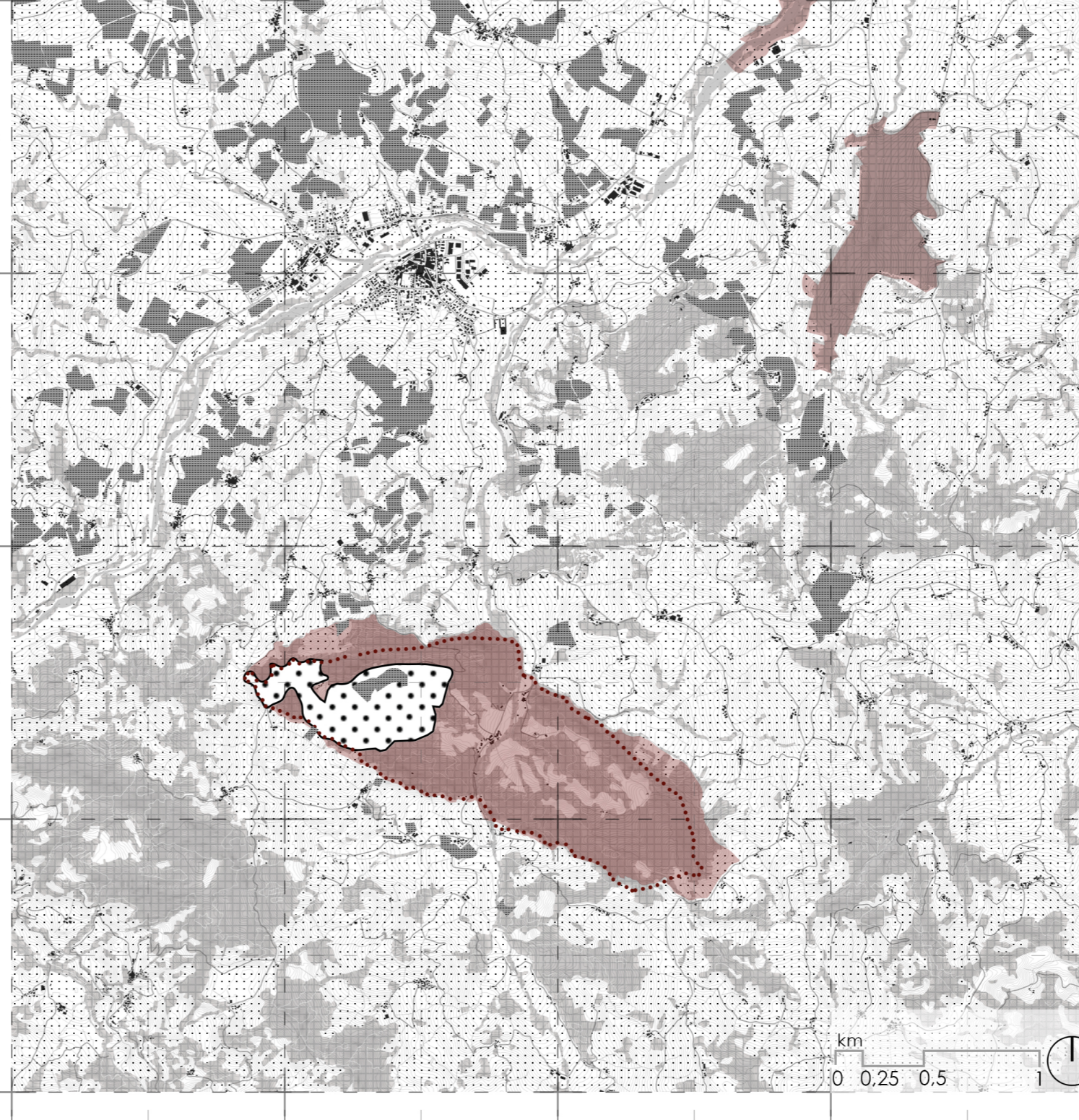
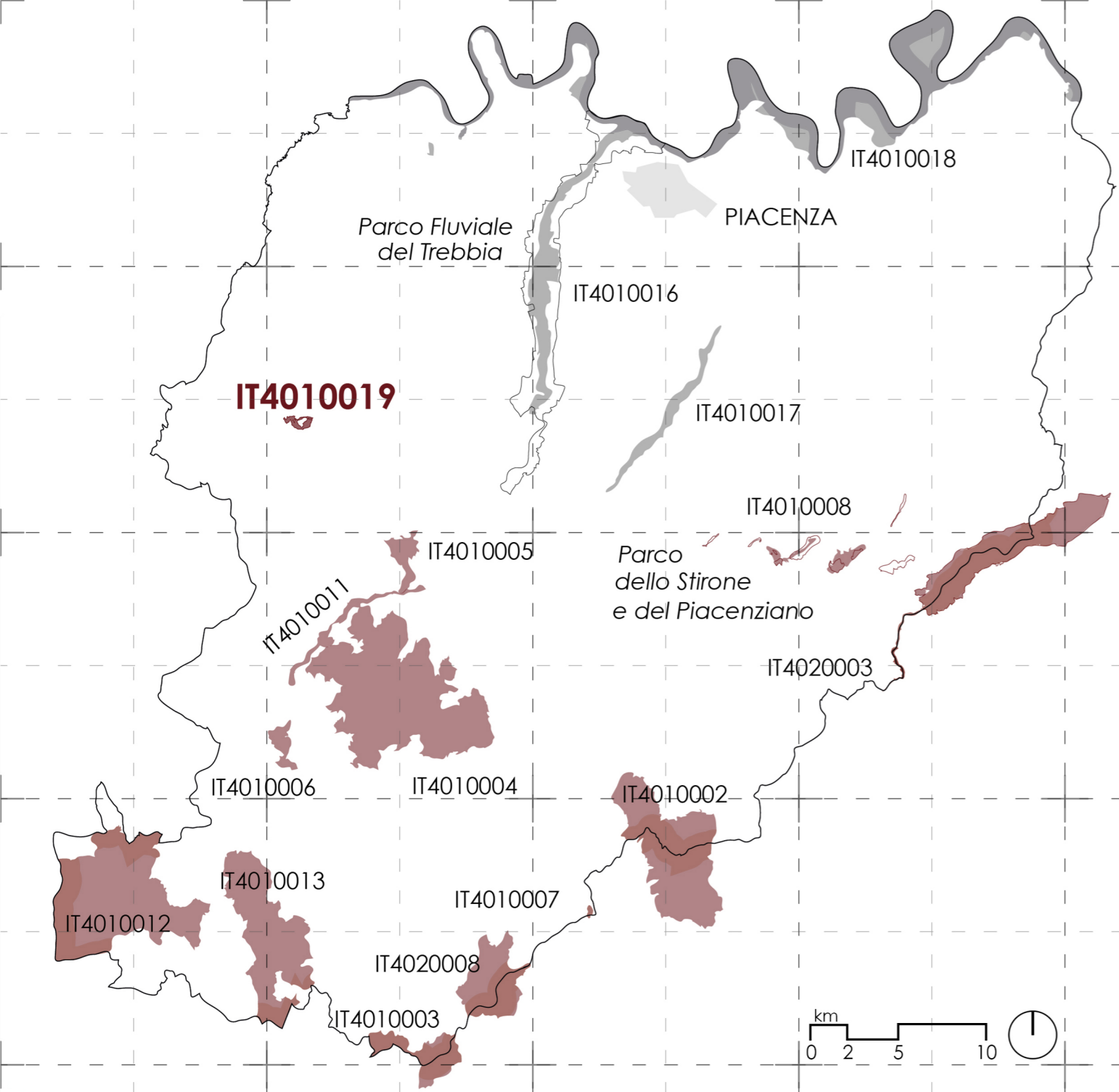
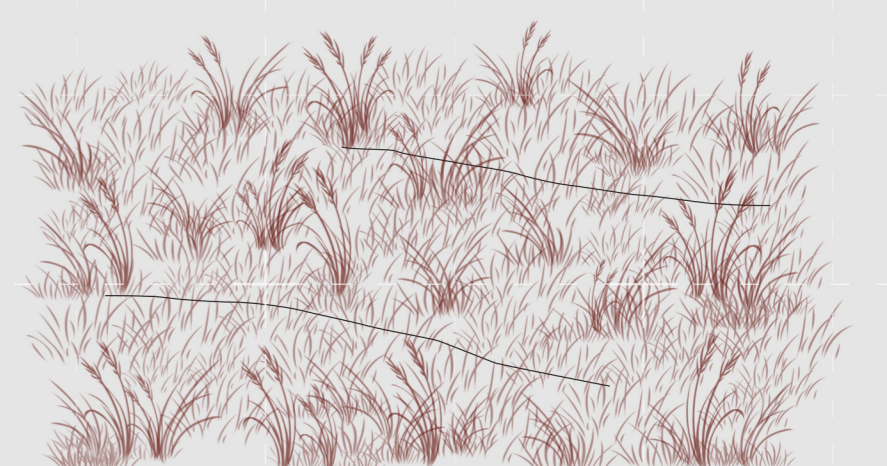
## Monte Piano outcrops plants Coronilla minima-Astragalum monspessulani group

Altitude: 560-580m above sea level  
Exposure: NE  
Substrate: sandstone floor  
Order: Brometalia Erecti  
Class: festuco-Brometea  
Habitat: 6210 - dry semi-natural grasslands and bush-covered facies on limestone substrate



## Meso-hygrophytic grasslands plants Molinietum arundinaceae group

Altitude: 250m above sea level  
Exposure: E  
Substrate: marl  
Order: Molinietalia coeruleae  
Class: Molinium-Arrhenatheretea  
Habitat: 6410 - grasslands with moly on calcareous, peaty or clay-silt soils



## Protected areas

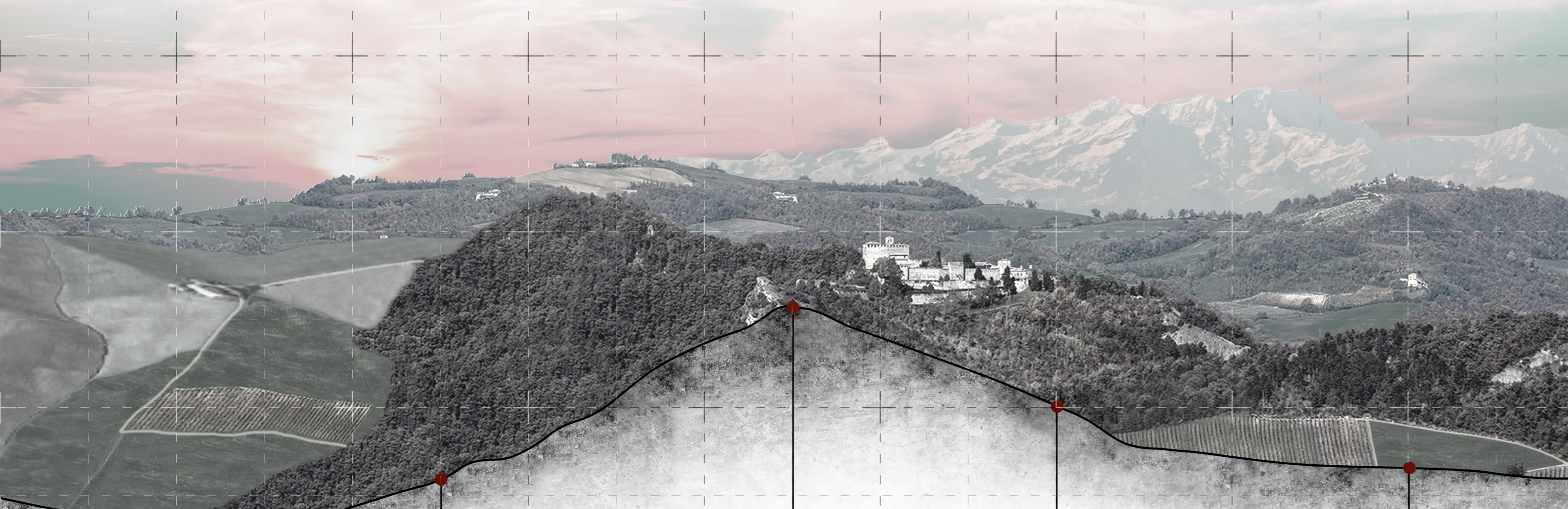
- Regional parks and Nature reserves
- Sites of Community Interest (SIC)
- Sites of Community Interest (SIC) and Zone of Special Protection (ZPS)

The rocky site **Rupi di Rocca d'Olgisio** falls into a hilly territory located near the Chiarone stream, confined within the perimeter described by the geomorphological formation known as "canoe valley".  
This site, which covers about 70 Ha of land at an altitude between 298m - 610m asl, thanks to the presence of diversified habitats and to its unique natural features, suitable for the coexistence of animal and plant species, from 2009 is part of the European Natura 2000 network.

## Land use | green system

- Geositi
- Rete Natura 2000 - Sites of Community Interest (SIC) and Special Protection (ZPS)
- Areas of naturalistic value outside protected areas
- Wineyard
- Agriculture fields
- Forest

The strongly permeable sandy substrate and the southern exposure create aridity conditions, favouring the establishment of a vegetation with strong thermophilic characteristics, especially in the most exposed sectors.  
Due to its geomorphological nature this rocky outcrop is a singular example of a **thermophilic floristic island** whose microclimatic characteristics have allowed the settlement of species with Mediterranean corology.



	CULTIVATED FIELDS	FOREST	THERMOPHILIC VEGETATION	UNDERGROWTH	MEADOWS
ARABLE CROPS	Alfalfa ( <i>Medicago sativa</i> )	Beech tree ( <i>Fagus sylvatica</i> )	Common ivy ( <i>Hedera helix</i> )	Blackthorn ( <i>Prunus spinosa</i> )	Burning bush ( <i>Diclianthus albus</i> )
	Wheat ( <i>Triticum</i> )	Chestnut ( <i>Castanea sativa</i> )	Common polypody ( <i>Polypodium vulgare</i> )	Cornet Grass ( <i>Delphinium consolida</i> )	Downy Fruited Sedge ( <i>Carex guestphalica</i> )
	Barbera	Common hornbeam ( <i>Carpinus betulus</i> )	Irish Spleenwort ( <i>Asplenium onopteris</i> )	Hawthorn ( <i>Crataegus monogyna</i> )	Early sedge ( <i>Carex praecox</i> )
WINES	Bonarda	Downy oak ( <i>Quercus pubescens</i> )	Maidenhair spleenwort ( <i>Asplenium trichomanes</i> )	Holly ( <i>Ilex aquifolium</i> )	Hemp-agrimony ( <i>Eupatorium cannabinum</i> )
	Malvasia	Hackberry ( <i>Celtis australis</i> )	Eastern prickly pear ( <i>Opuntia humifusa</i> )	Wild Sommaco ( <i>Cotinus coggygria</i> )	Irish fleabane ( <i>Inula salicina</i> )
	Ortrugo	Hazel ( <i>Corylus avellana</i> )	White stonecrop ( <i>Sedum album</i> )	Apennine lungwort ( <i>Pulmonaria apennina</i> )	Lesser chickweed ( <i>Stellaria pallida</i> )
	Pinot nero	Holm oak ( <i>Quercus ilex</i> )	Montpellier Milk Vetch ( <i>Astragalus monspessulanus</i> )	Carnation of Séguier ( <i>Dianthus seguieri</i> )	Man orchid ( <i>Aceras anthropophorum</i> )
		Turkey oak ( <i>Quercus cerris</i> )	Mountain germander ( <i>Teucrium montanum</i> )	Dark Aquilegia ( <i>Aquilegia atrata</i> )	Ox-eye daisy ( <i>Leucanthemum vulgare</i> )
	White ash ( <i>Fraxinus excelsior</i> )	Viper's bugloss ( <i>Echium vulgare</i> )	Delphinium ( <i>Delphinium fissum</i> )	Purple loosestrife ( <i>Lythrum salicaria</i> )	
		White Rock Rose ( <i>Helianthemum apenninum</i> )	Snowdrop ( <i>Galanthus nivalis</i> )	Purple moor-grass ( <i>Molinia arundinacea</i> )	
			Trifoliate anemone ( <i>Anemone trifolia</i> )	Wild Narcissus ( <i>Narcissus poeticus</i> )	

