

OUTSIDE THE HIVE



**SPRING**  
many foragers visible  
activity working.

**EARLY SUMMER**  
a full complement  
of activity.

**LATE SUMMER**  
possible exit of swarm

**FALL**  
a few remaining  
foragers

INSIDE THE HIVE

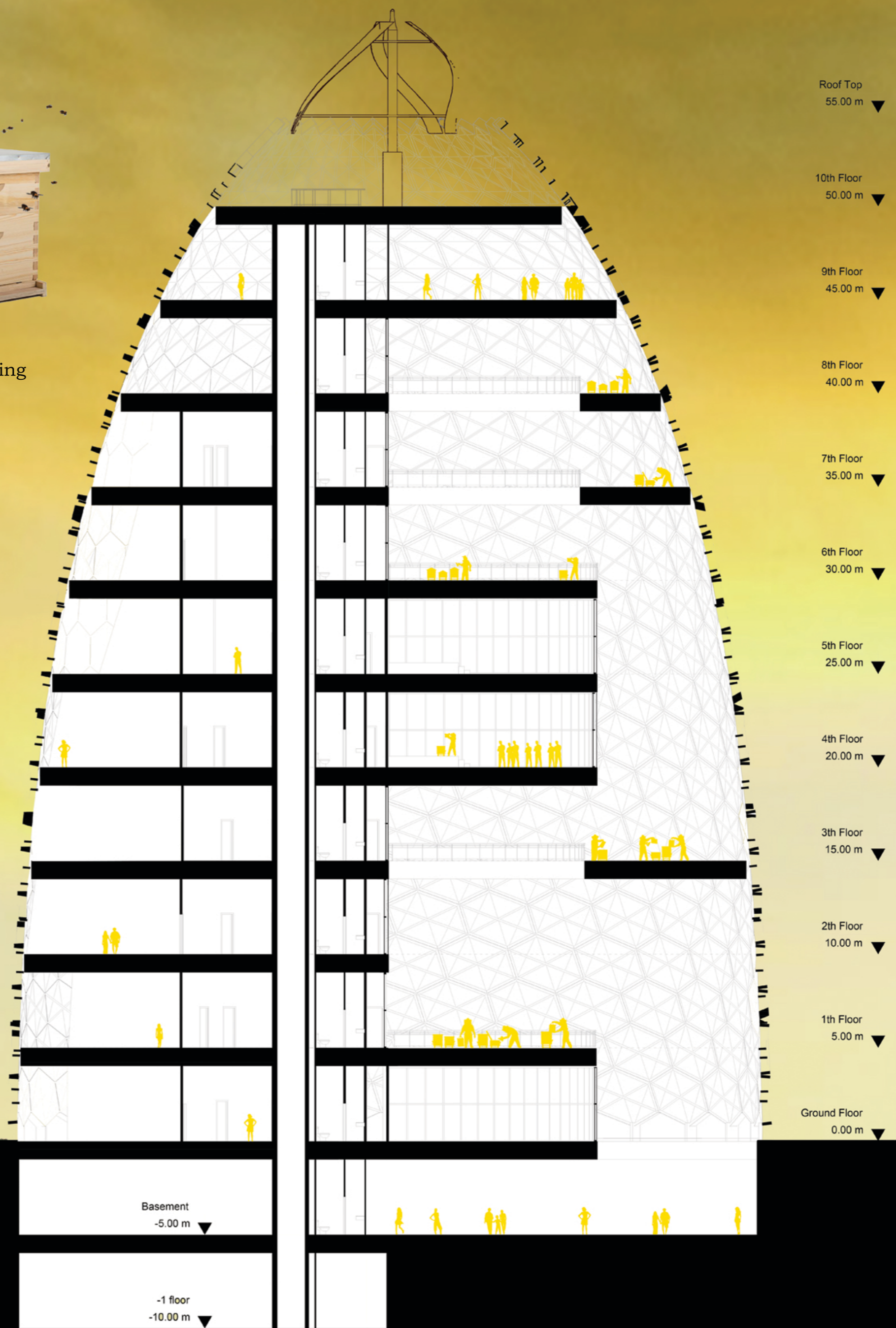


**SPRING**  
the queen lays eggs  
(1500-2000 a day)  
that are capped by  
workers.

**EARLY SUMMER**  
bee numbers and activity  
are high. workers forage  
on abundant food re-  
sources.

**LATE SUMMER**  
queen cells are produced  
as the colony grows. new  
queens will leave the  
hive to establish new  
colonies.

**FALL**  
bees rely on stored  
food. workers forage  
for water and take  
cleaning flights.



SECTION A-A

Sc: 1/200



Politecnico Di Milano  
Scuola Di Architettura  
Urbanistica e Ingegneria  
dell Costruzioni  
Dipartimento di  
Architettura e Studi - urbani - DASTU

ARCHITECTURE DESIGN STUDIO FOR COMPLEX CONSTRUCTION

collaboration with

prof. Maria Grazia Folli  
prof. Corrado Pecora  
prof. Giovanni Dotelli  
prof. Lavinia Chiara Tagliabue  
prof. Francesco Romano

(Design)  
(Structure)  
(Material)  
(BIM)  
(MEP)



HARRISON WAGOR 895479  
SADEGH HAGHIGHAT 894291