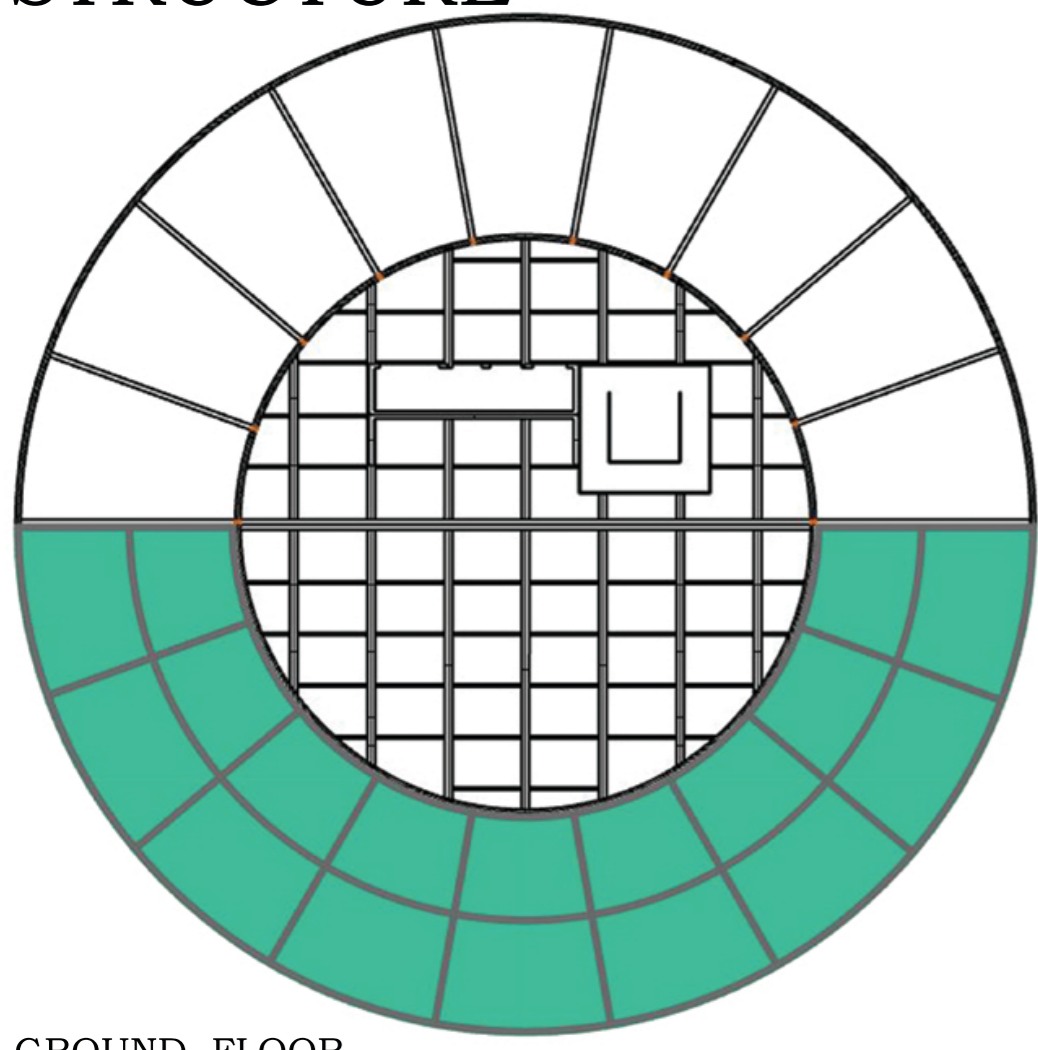
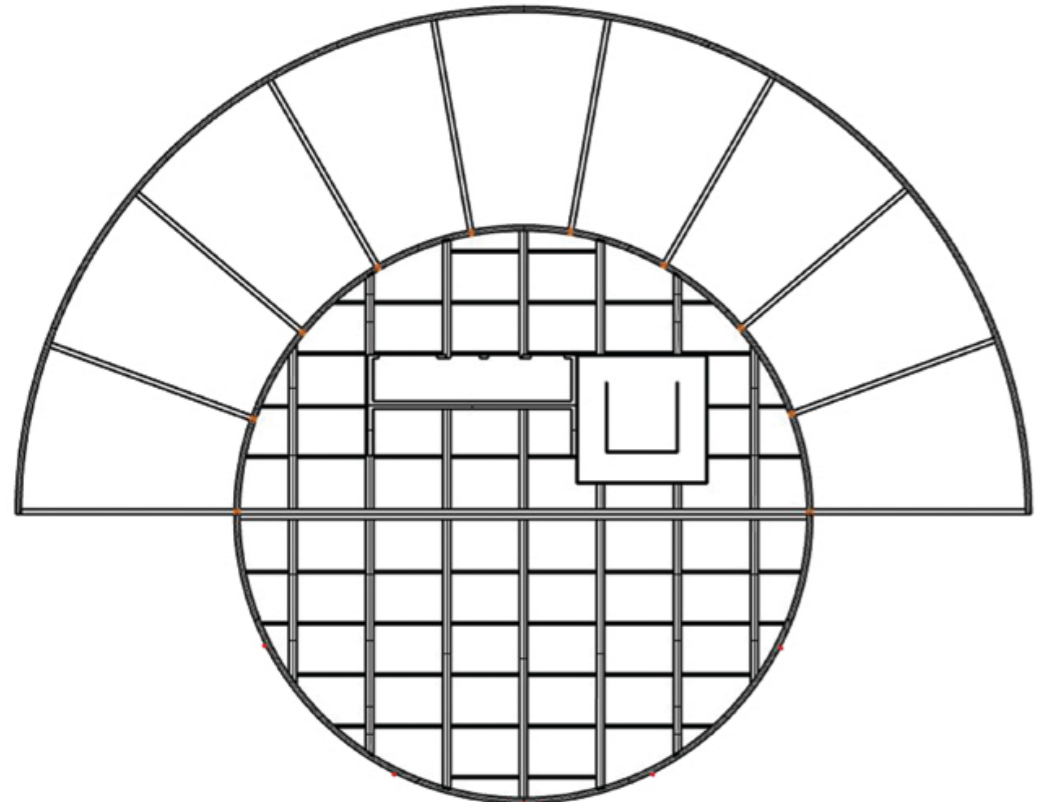


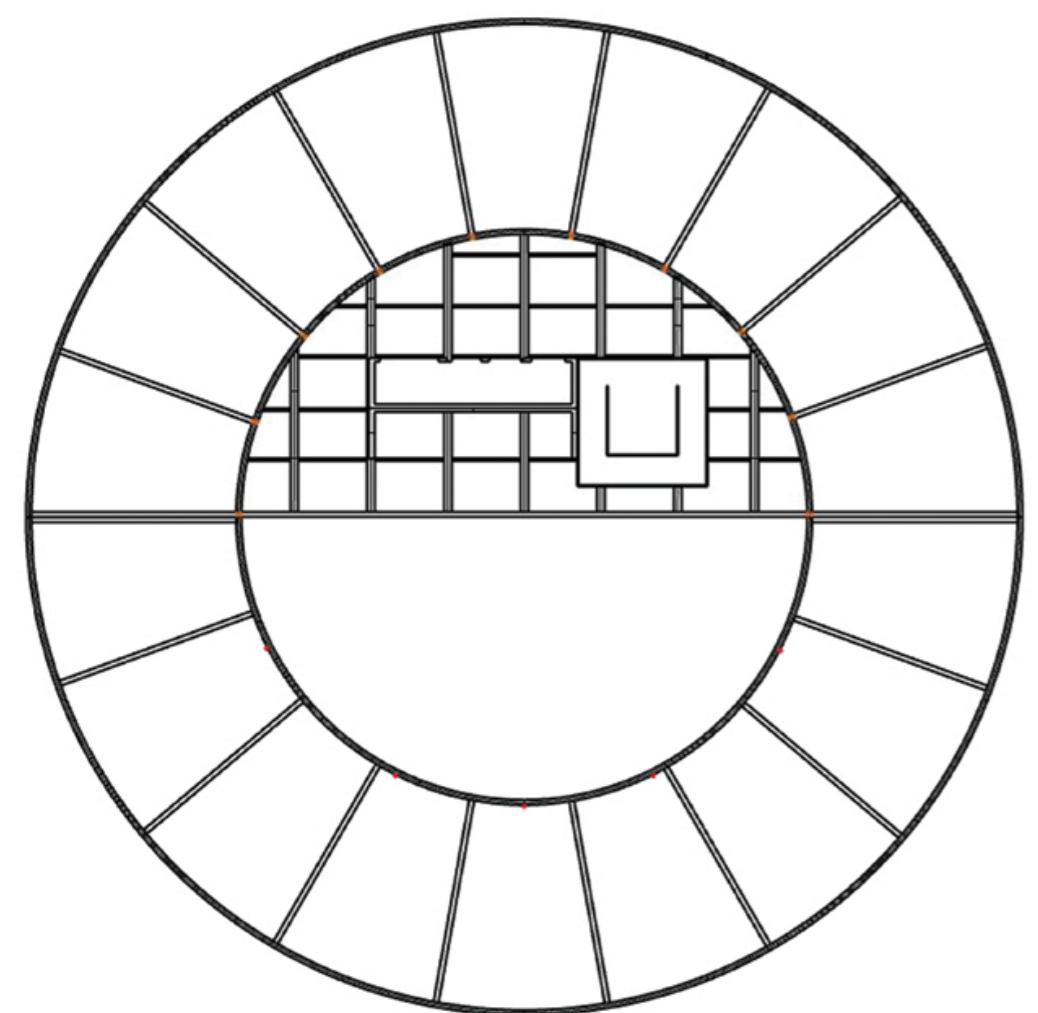
STRUCTURE



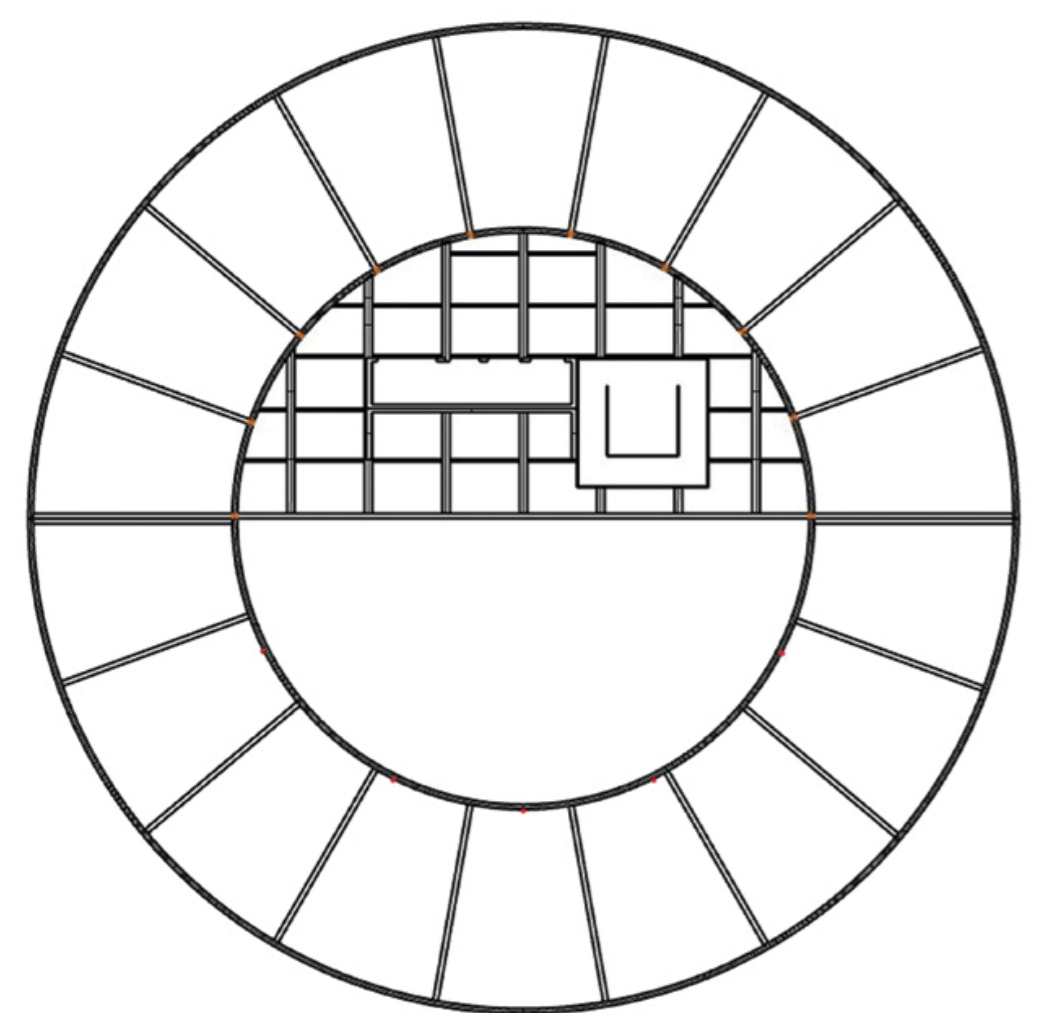
GROUND FLOOR



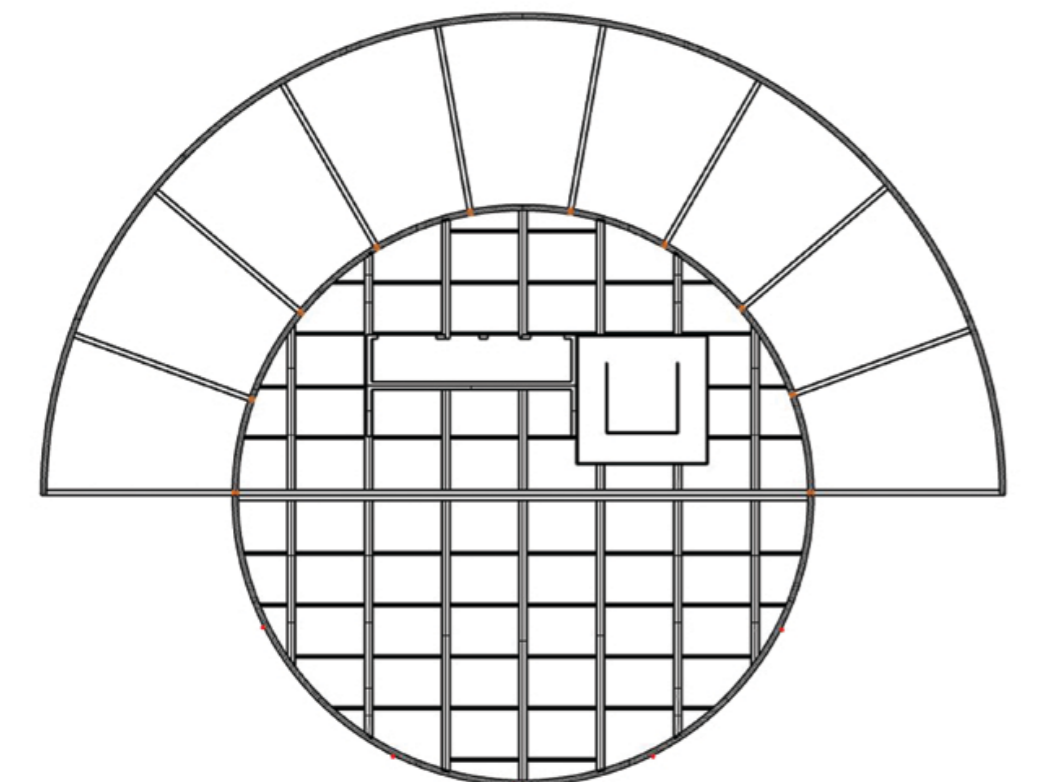
1st FLOOR



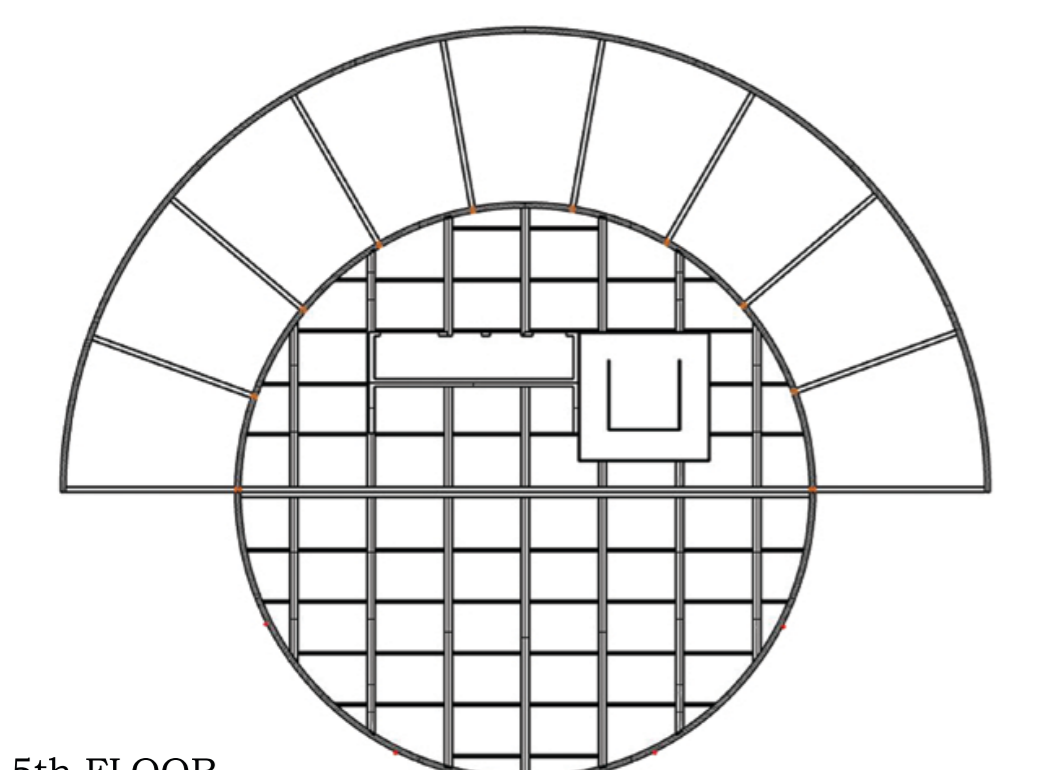
2nd FLOOR



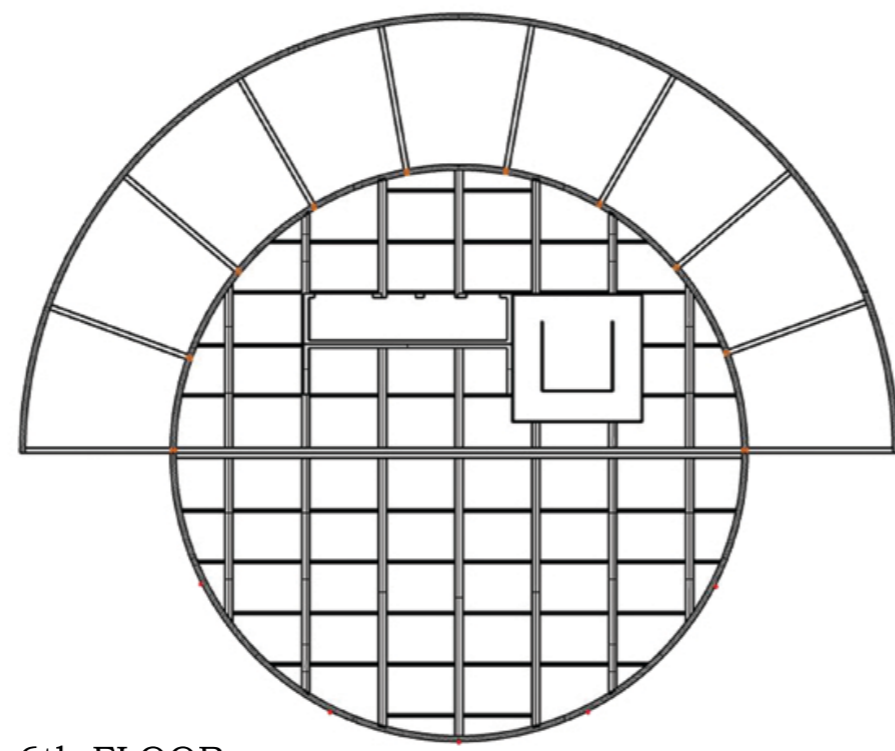
3rd FLOOR



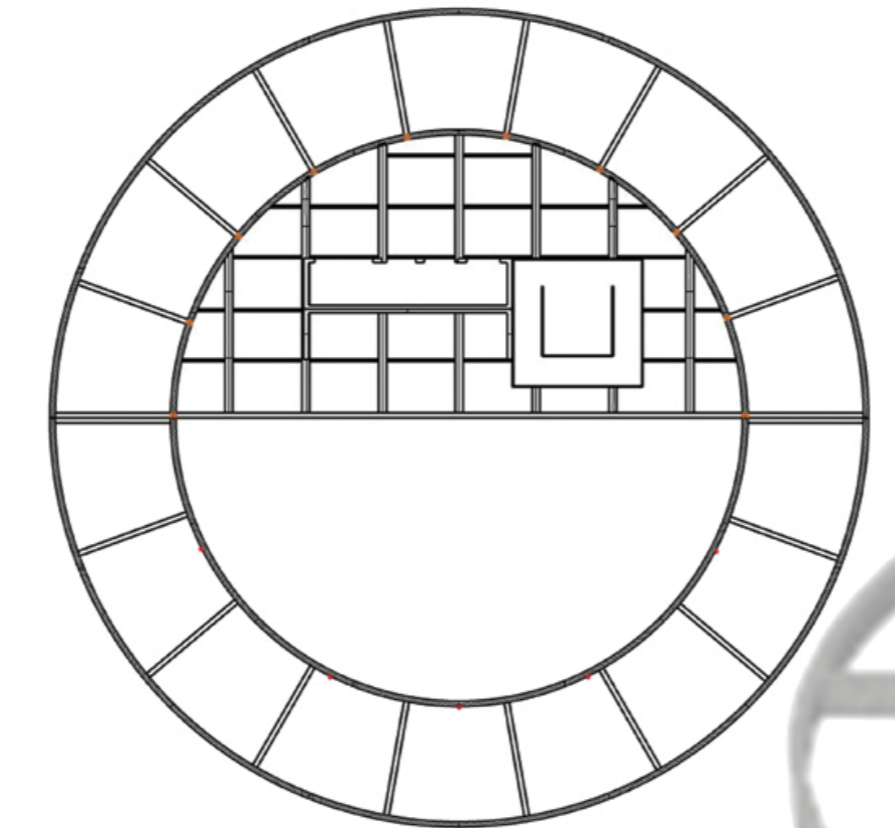
4th FLOOR



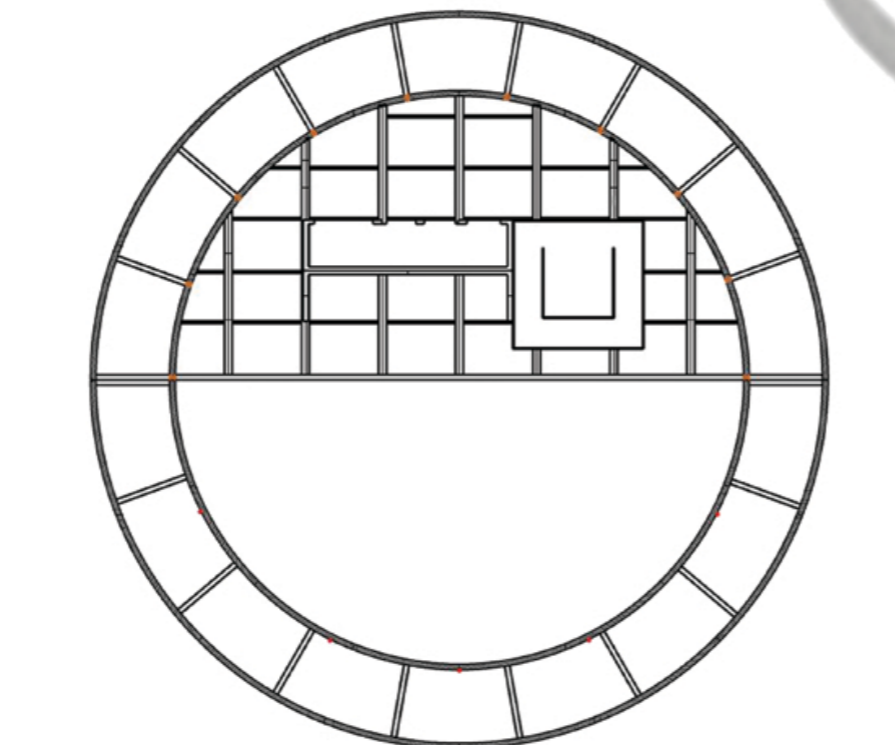
5th FLOOR



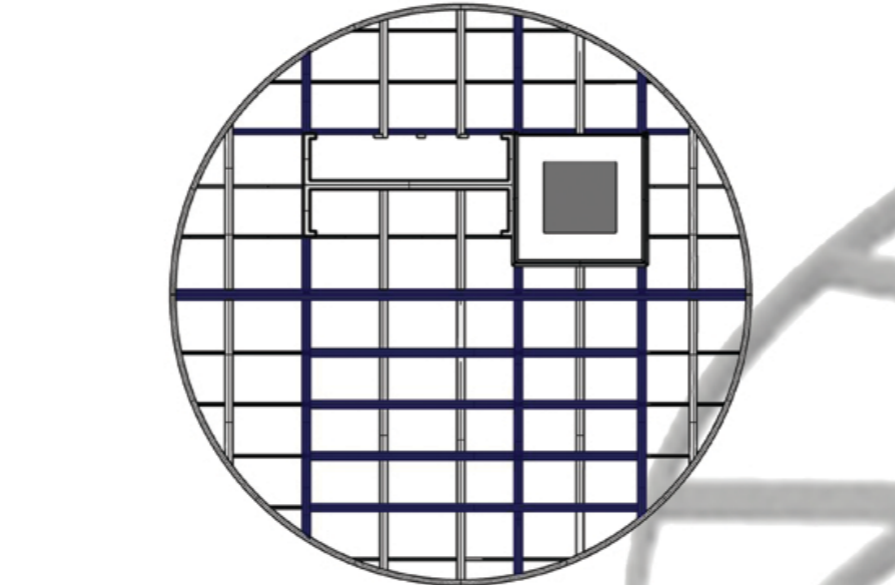
6th FLOOR



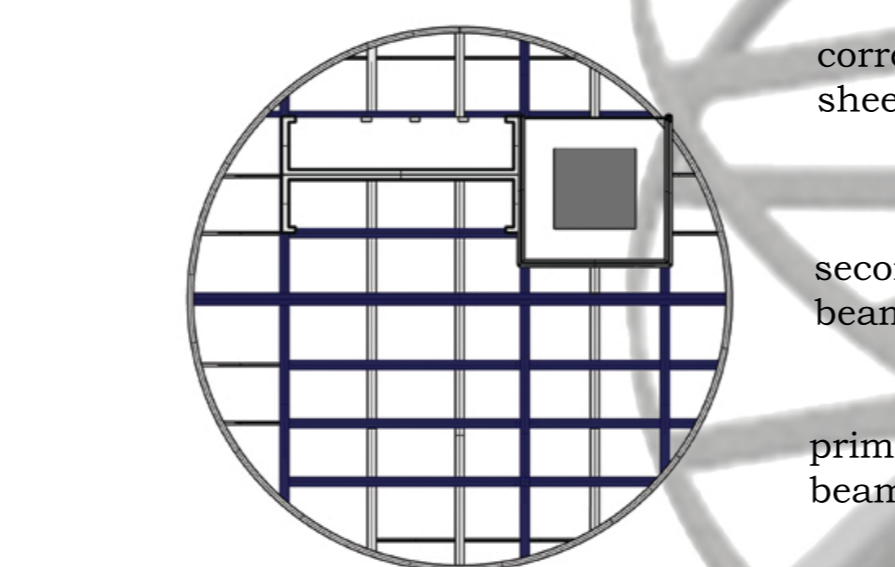
7th FLOOR



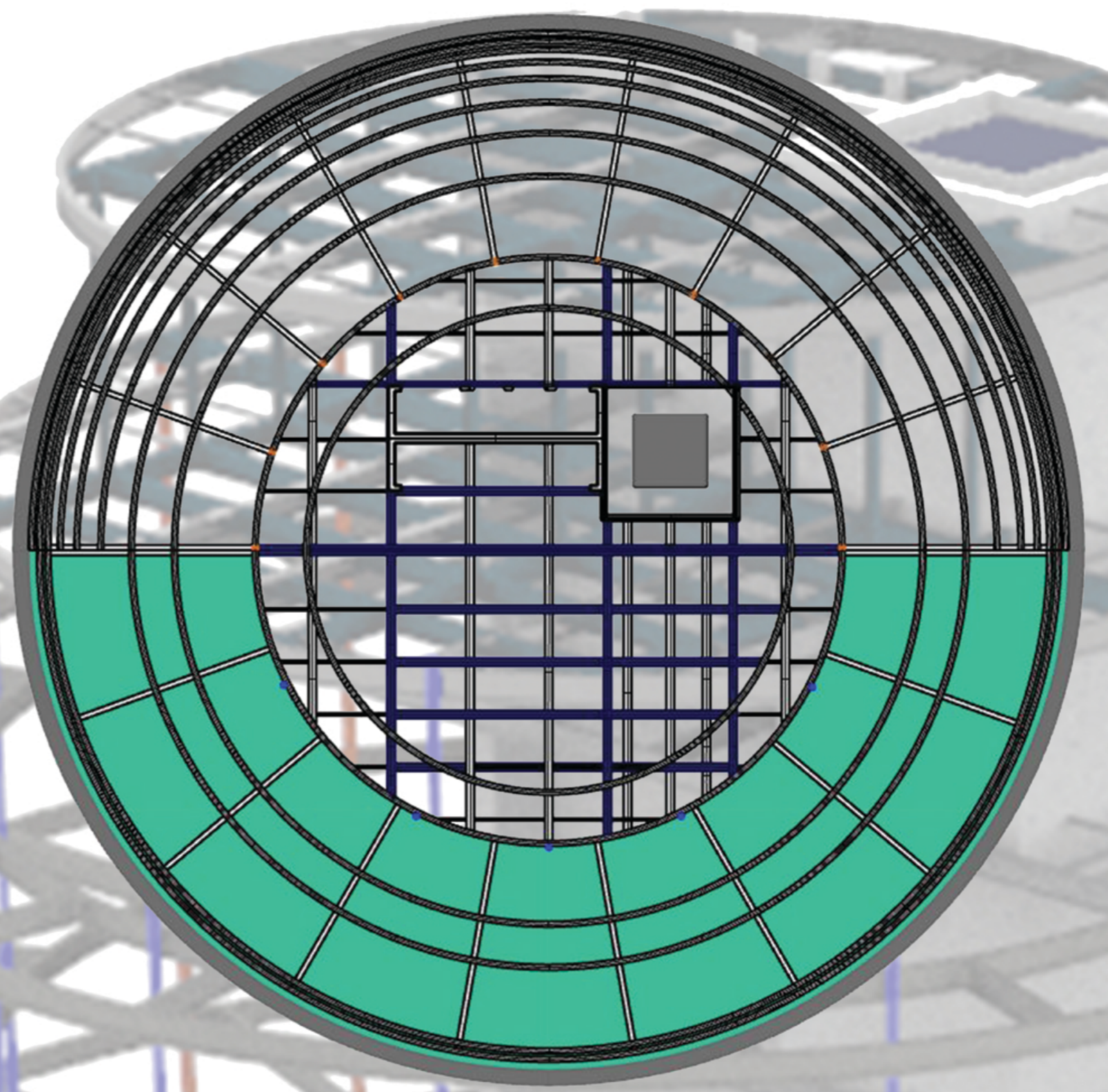
8th FLOOR



9th FLOOR

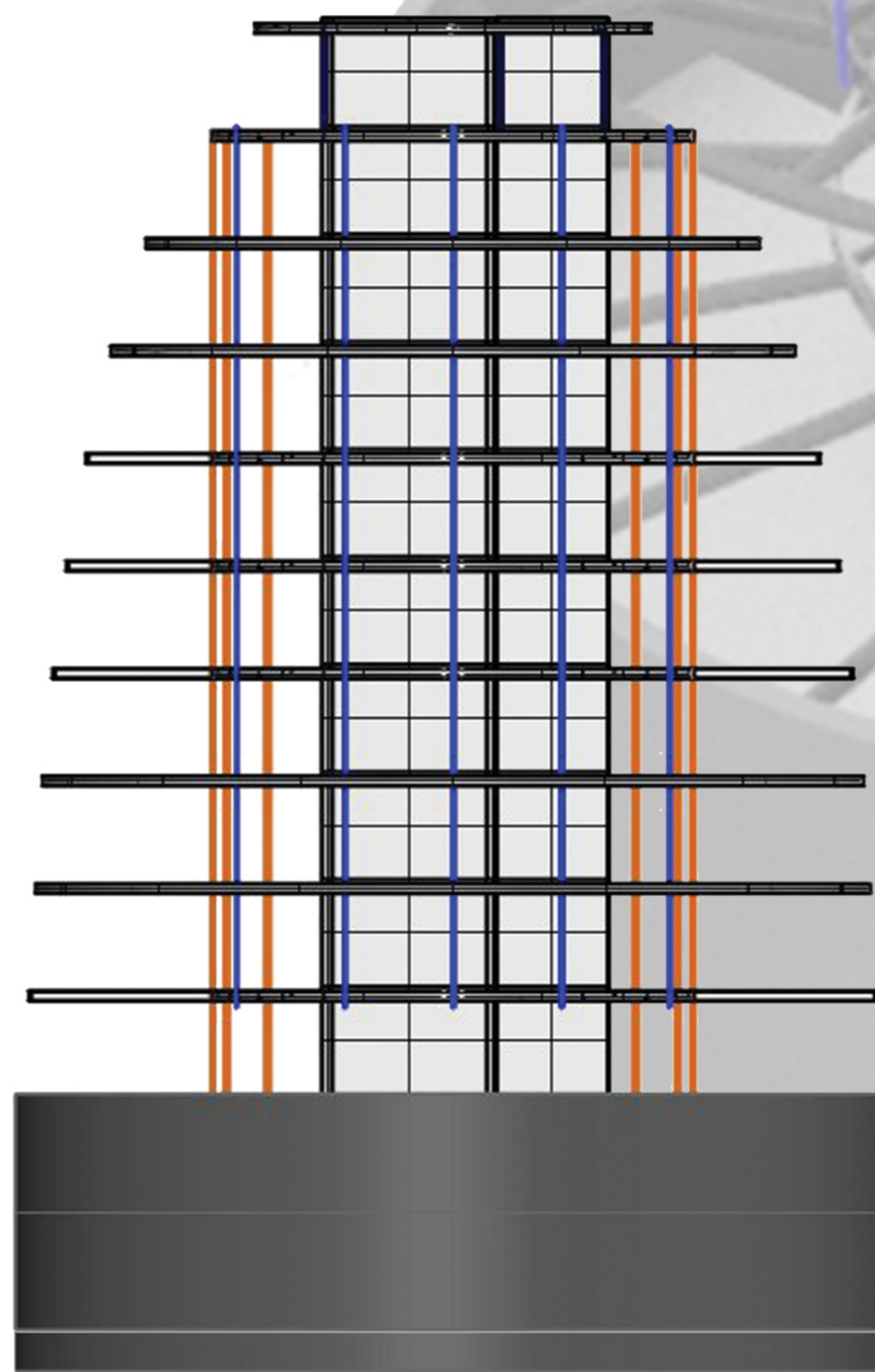
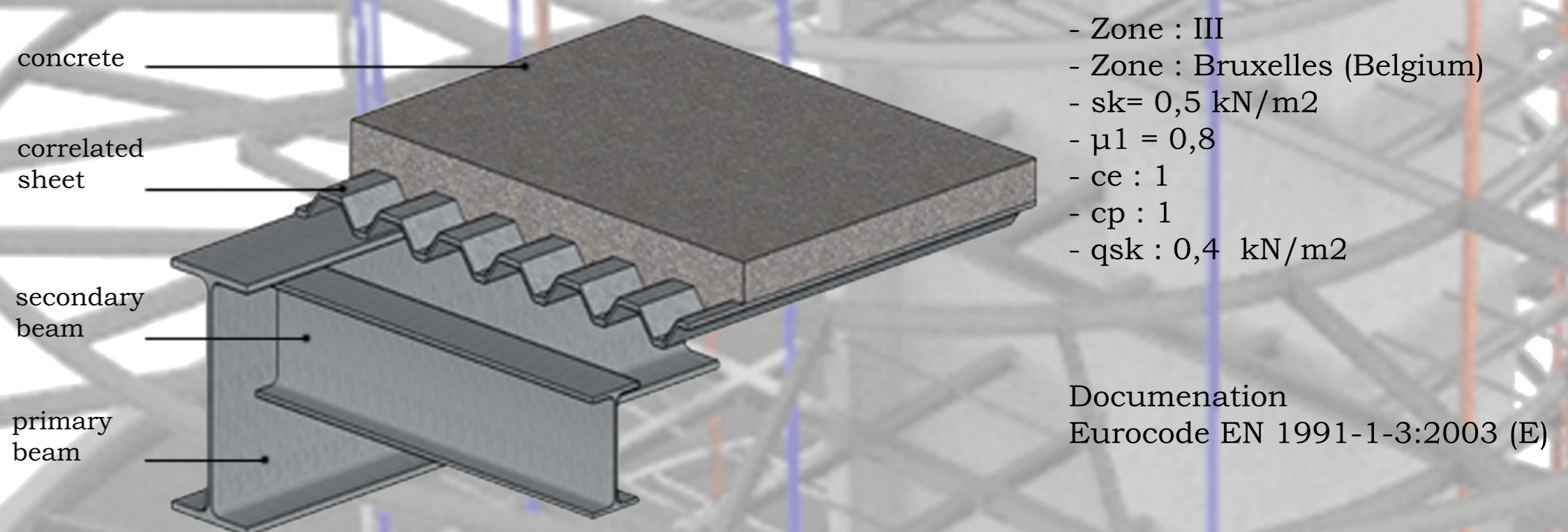


10th FLOOR

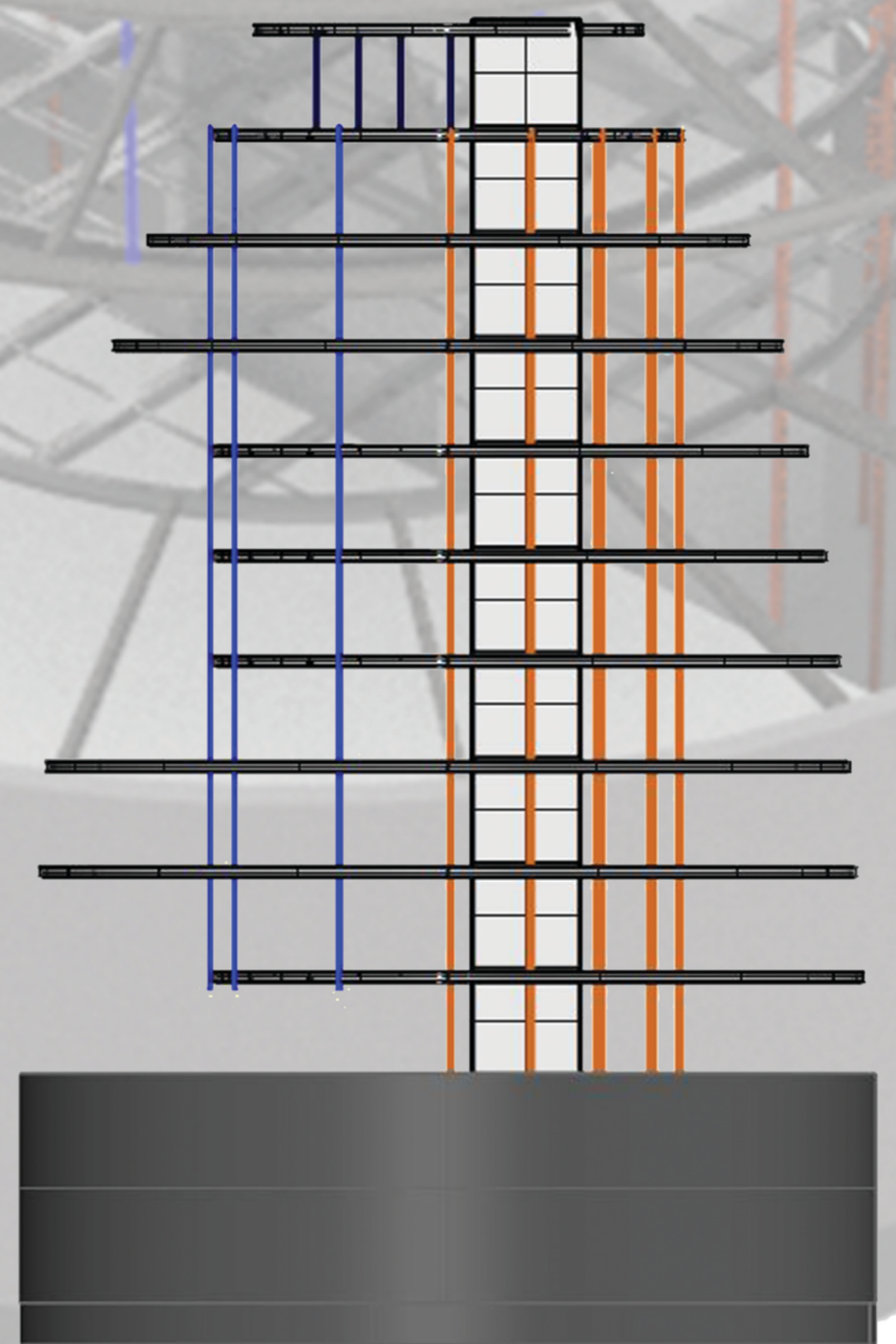


STRUCTURE TOP VIEW

Category	Specific Use	q_k [kN/m ²]	Q_k [kN]	q_k [kN/m]
A	Areas for domestic and residential activities (floors)	1.5 to 2.0	2.0 to 3.0	0.2 to 1.0 (0.5)
B	Office areas	2.0 to 3.0	1.5 to 4.5	
C	Areas where people may congregate:			
	C1: Areas with tables (e.g. restaurants, cafes...)	2.0 to 3.0	3.0 to 4.0	0.2 to 1.0 (0.5)
	C2: Areas with fixed seats (e.g. areas in churches, theatres or cinemas...)	3.0 to 4.0	2.5 to 7.0 (4.0)	
	C3: Areas without obstacles for moving people (e.g. museums, exhibition rooms...)	3.0 to 5.0	4.0 to 7.0	0.8 to 1.0
	C4: Areas with possible physical activities (e.g. dance halls, gymnastic rooms...)	4.5 to 5.0	3.5 to 7.0	
	C5: Areas susceptible to large crowds (e.g. concert halls...)	5.0 to 7.5	3.5 to 4.5	3.0 to 5.0
D	Shopping areas:			
	D1: Areas in general retail shops	4.0 to 5.0	3.5 to 7.0 (4.0)	0.8 to 1.0
	D2: Areas in department stores	4.0 to 5.0	3.5 to 7.0	



NORTH ELEVATION



EAST ELEVATION

