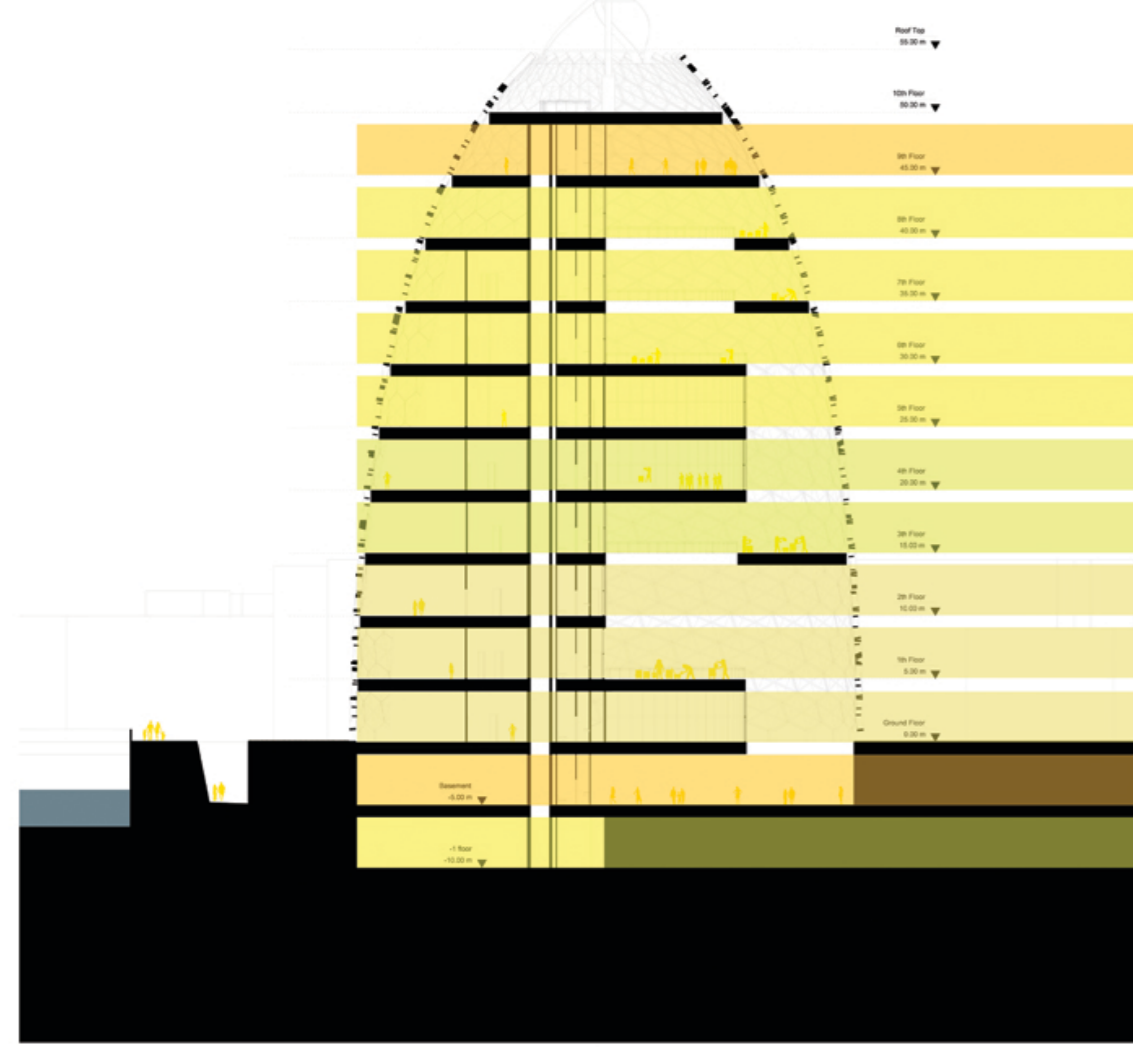
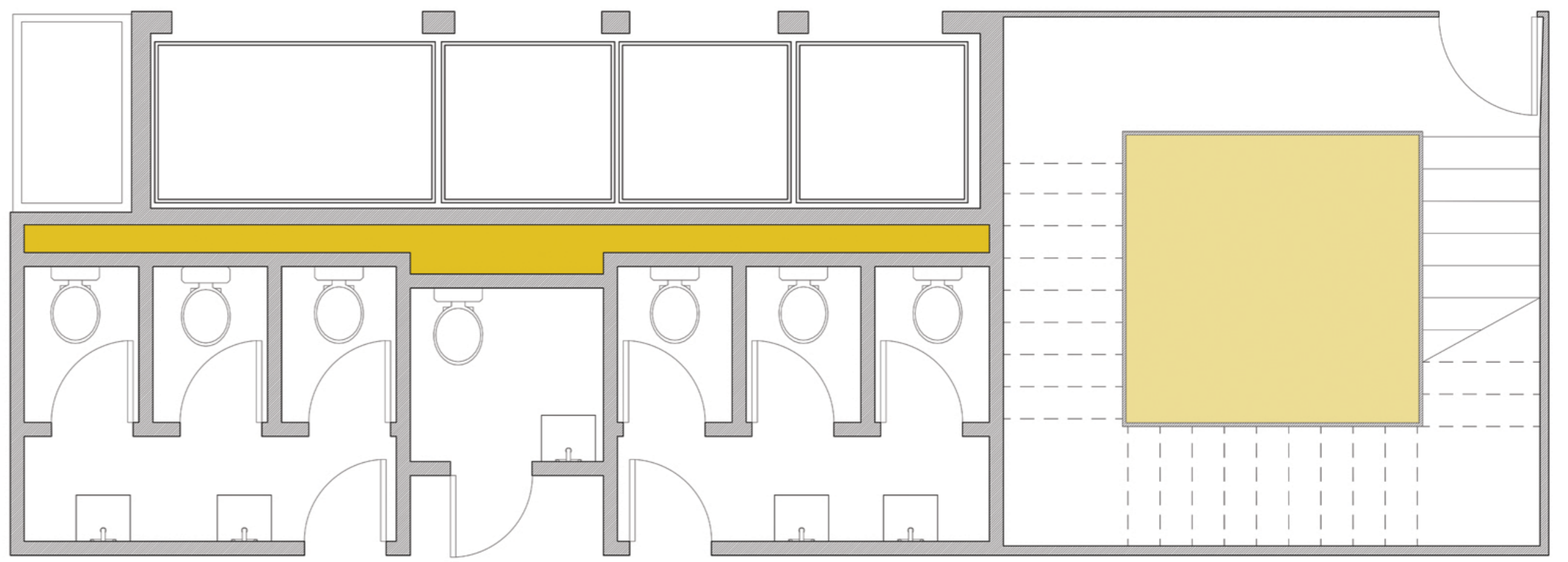


BUILDING SERVICES (MEP)

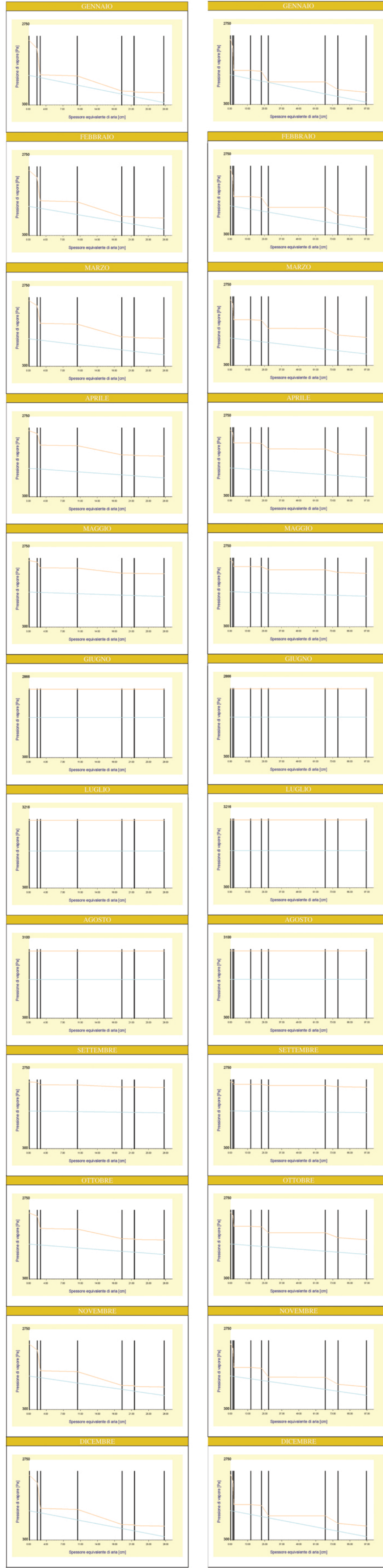


FLOORS FUNCTIONS

- PUBLIC AREA
- OFFICES
- OFFICES
- OFFICES
- OFFICES
- LABS
- LABS
- SCHOOL
- SCHOOL
- SCHOOL
- PUBLIC AREA
- STORAGE

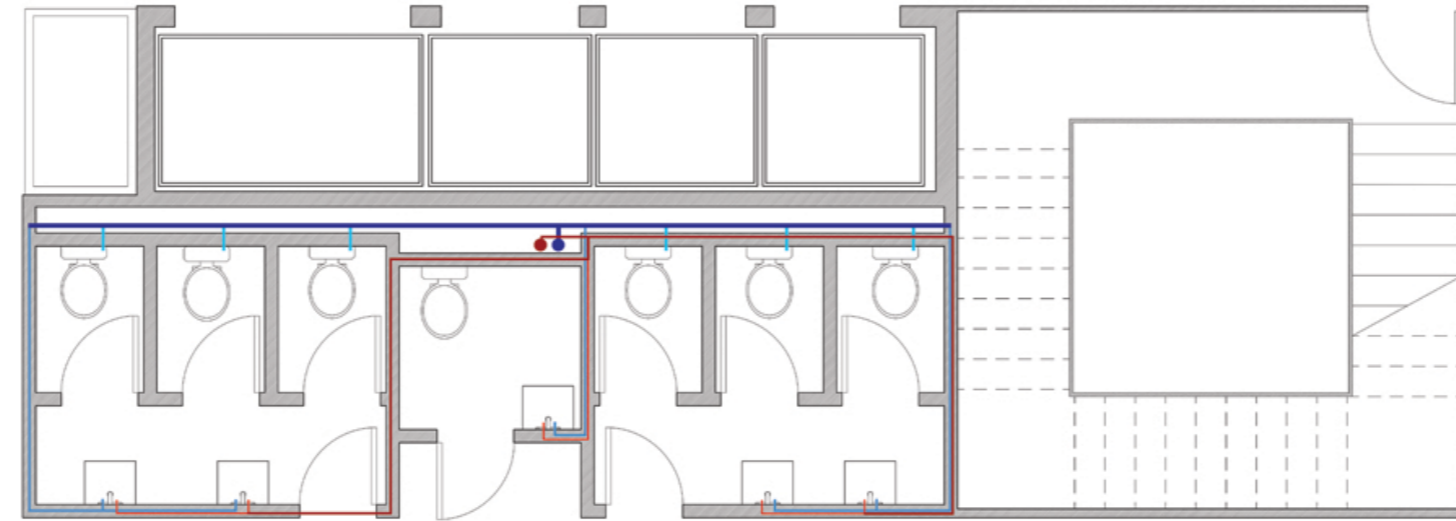


MEP CAVITY MAP

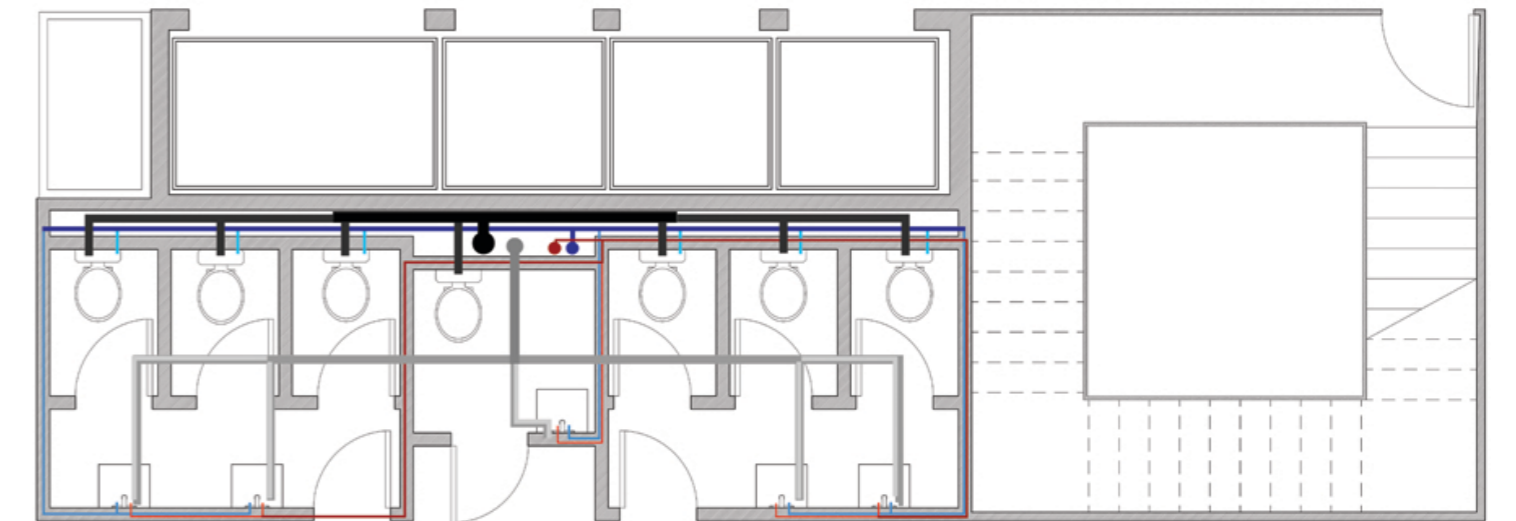


INTERSTITIAL CONDENSATION SLAB

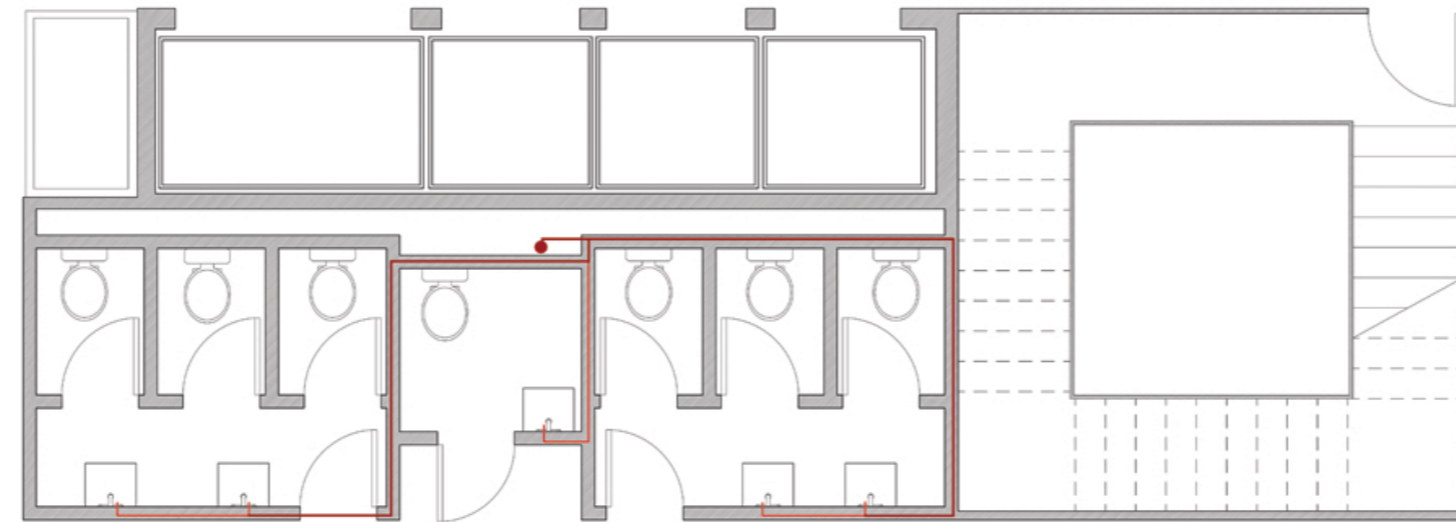
INTERSTITIAL CONDENSATION ROOF



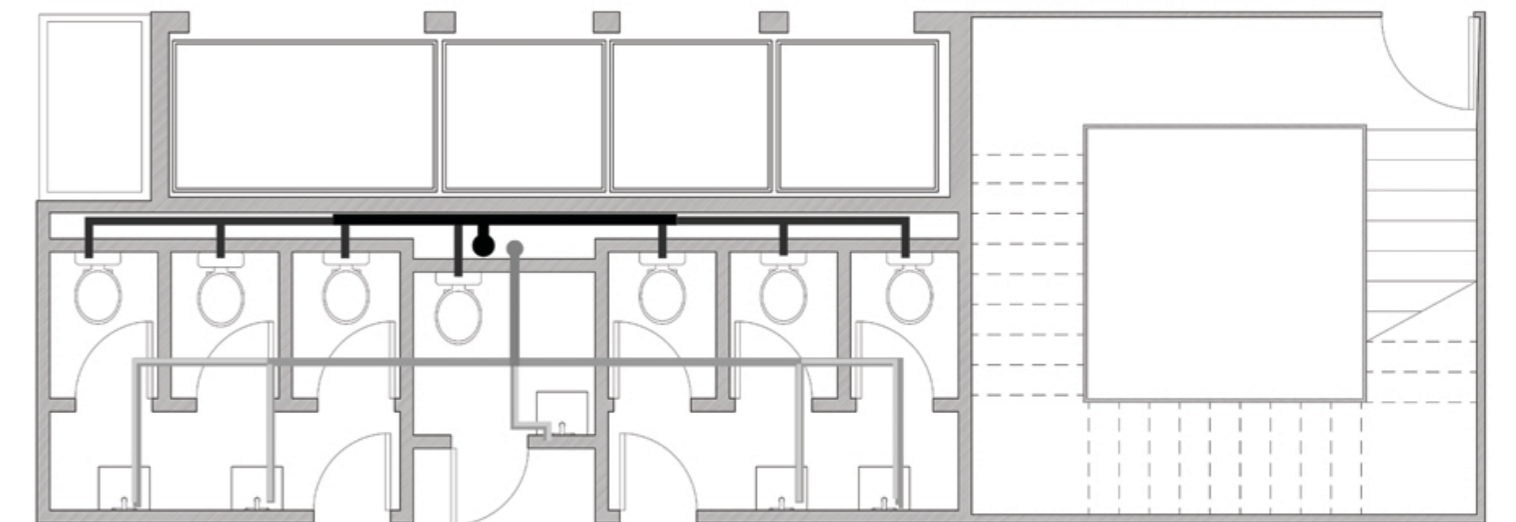
HOT,COLD WATER SYSTEM



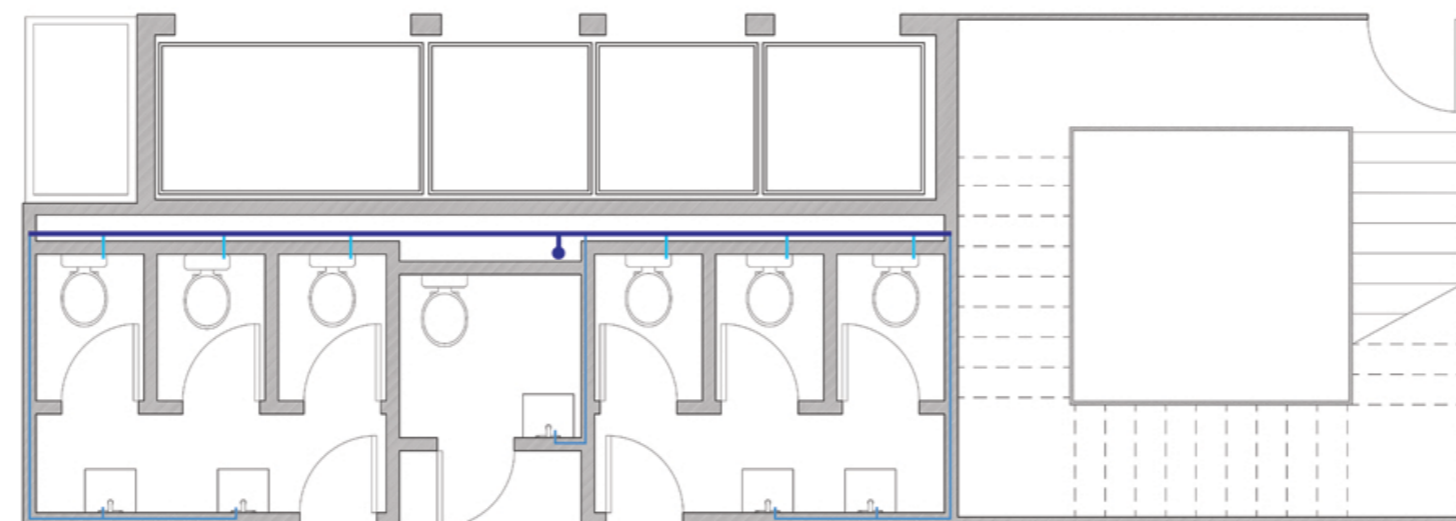
PLAN,MEP,WATER,DRAINAGE



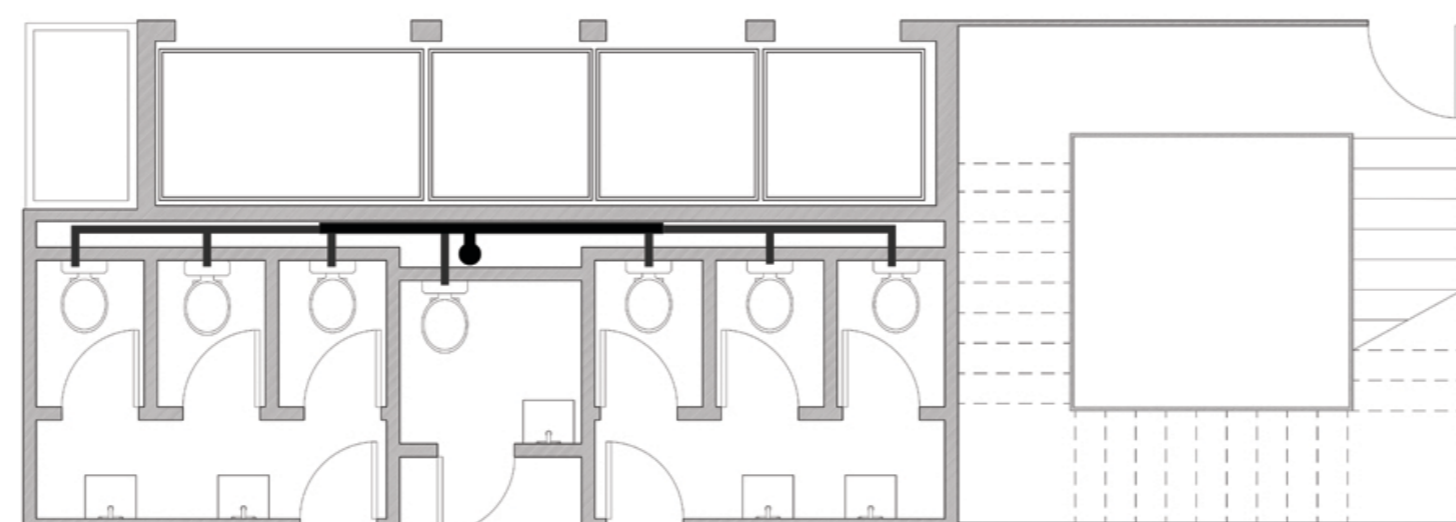
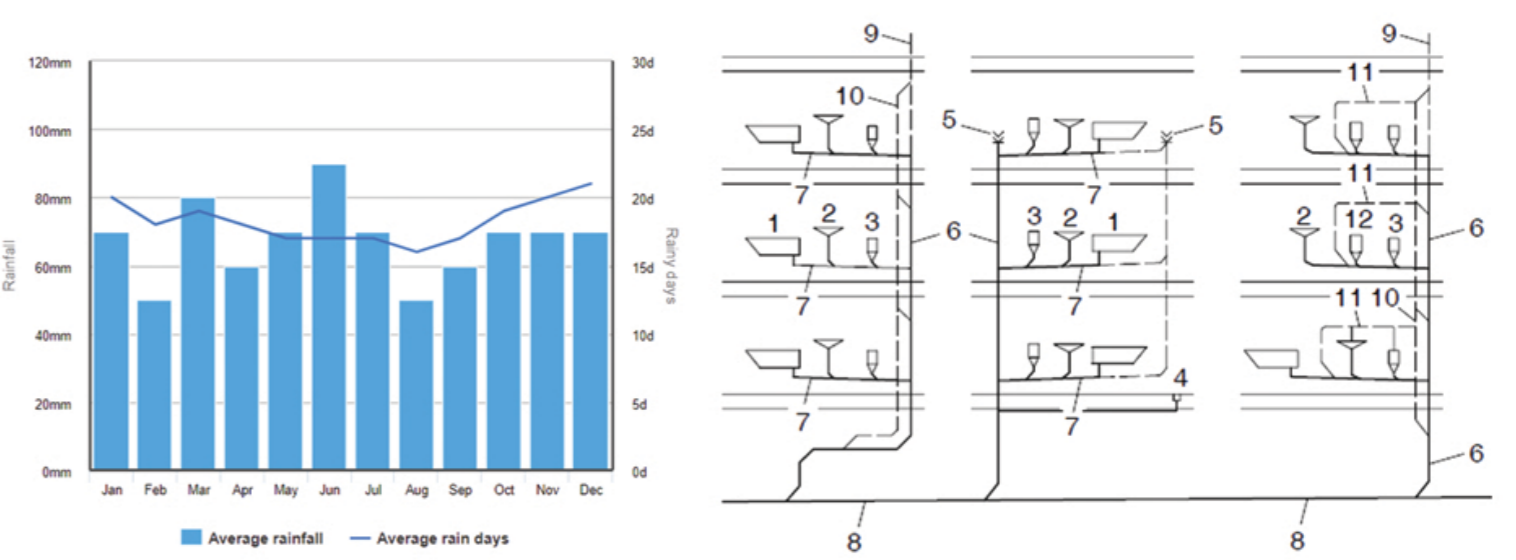
HOT WATER SYSTEM



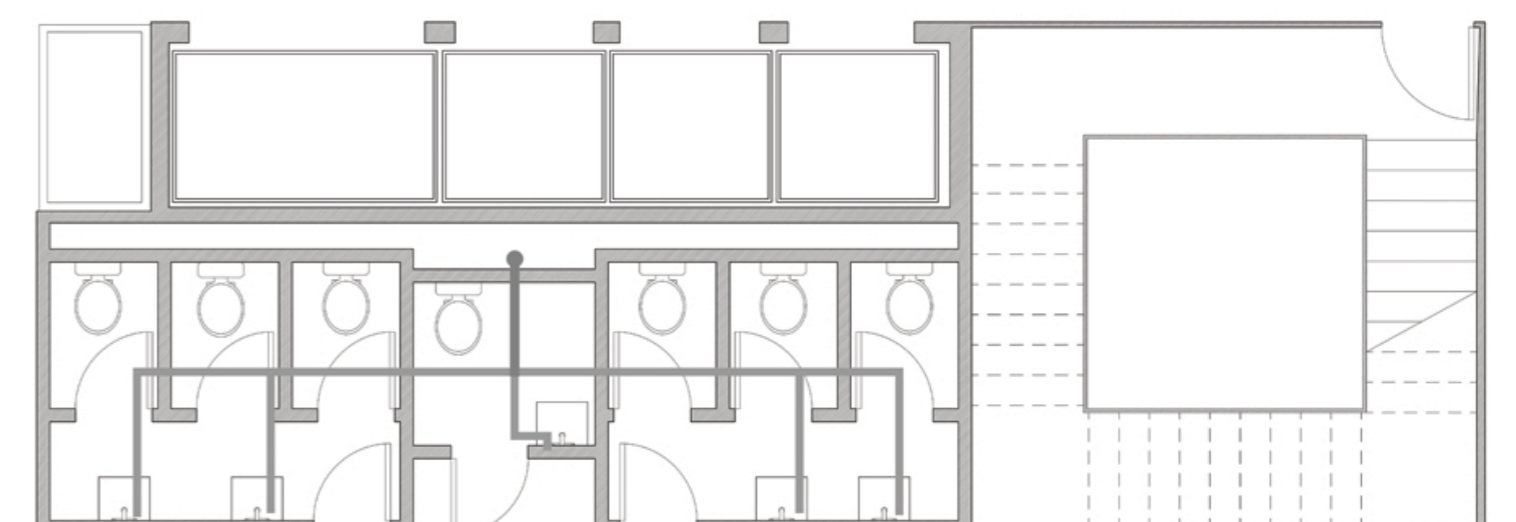
DRAINAGE BLACK,GRAY



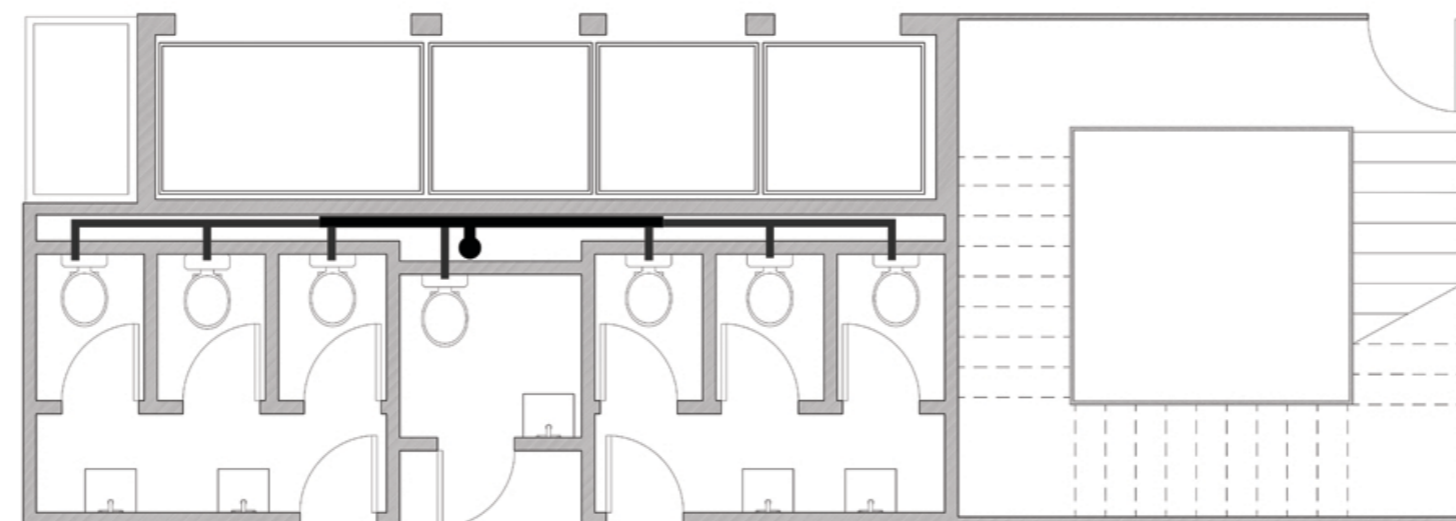
COLD WATER SYSTEM



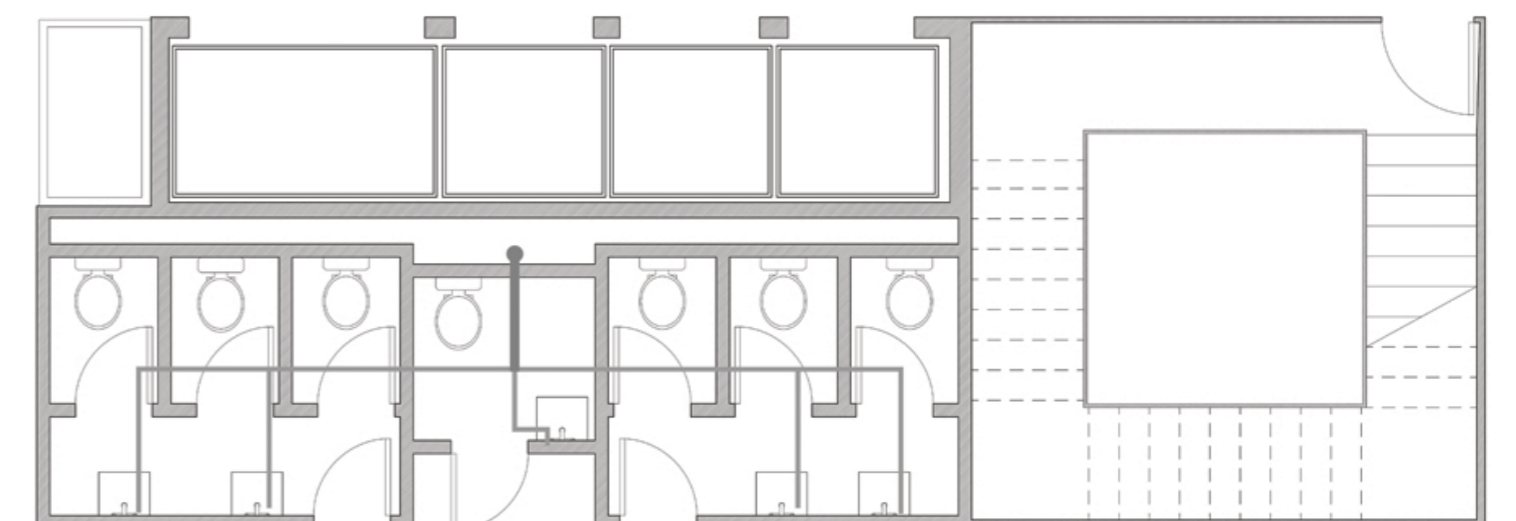
BLACK WATER LABS



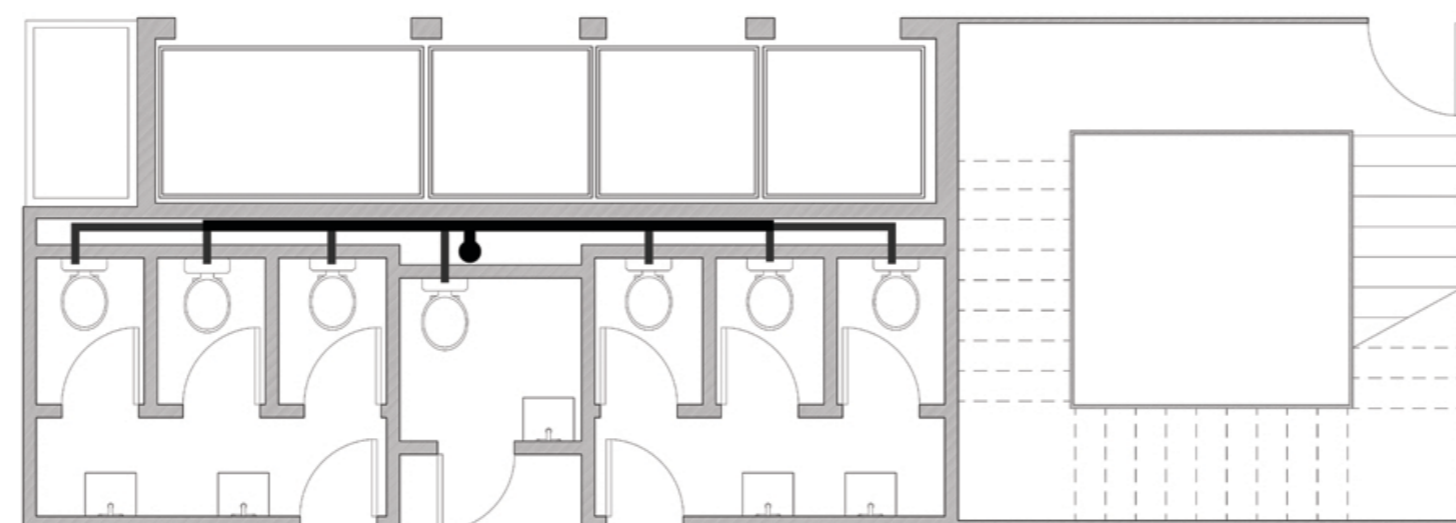
GREY WATER LABS



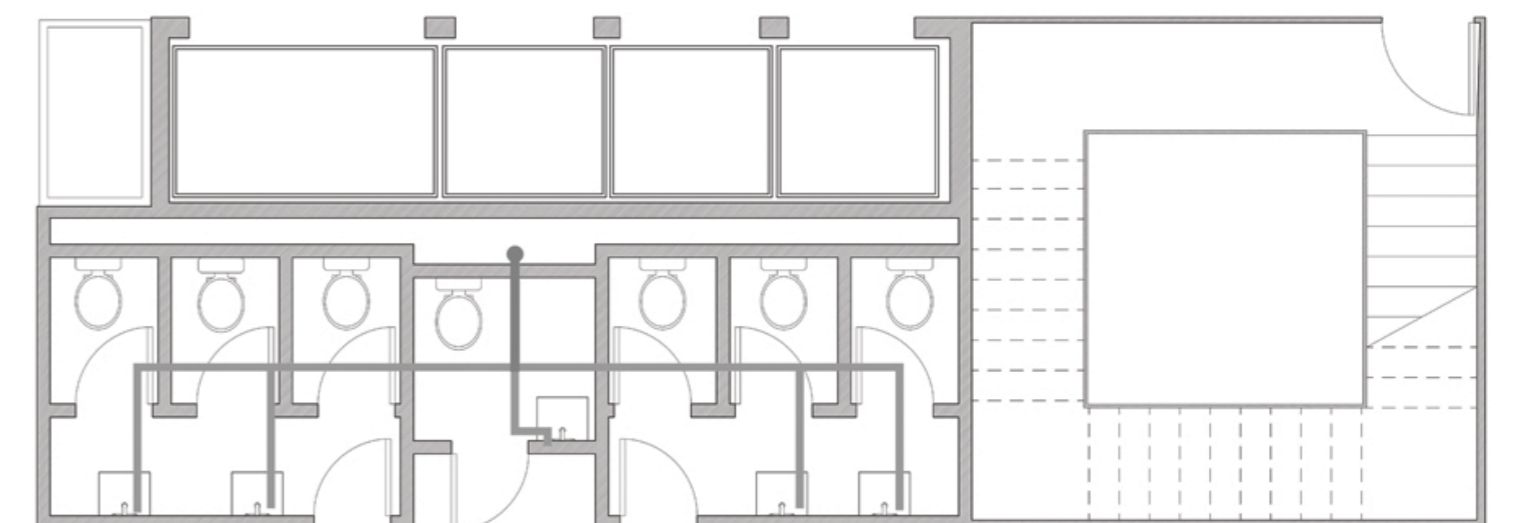
BLACK WATER OFFICE



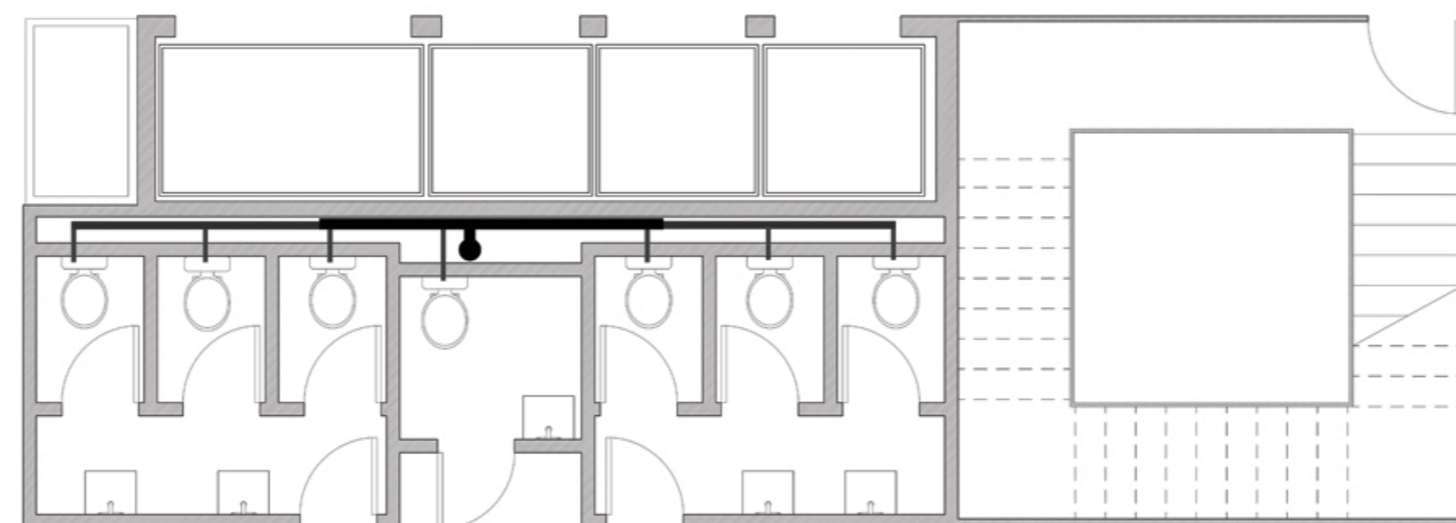
GREY WATER OFFICE



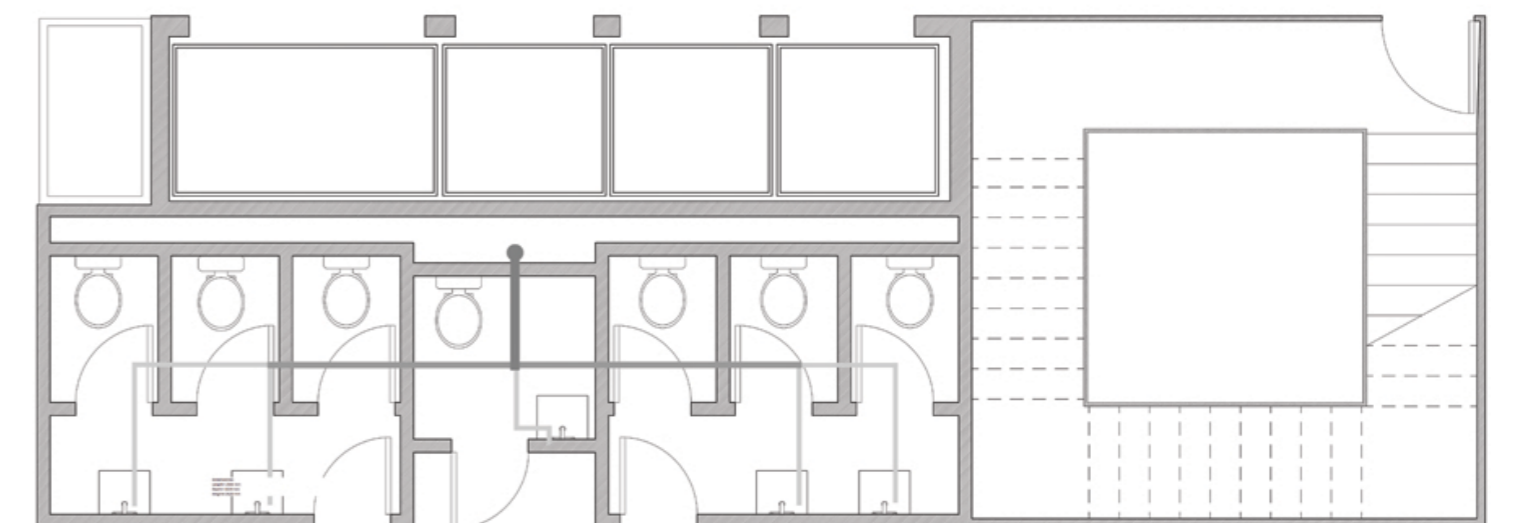
BLACK WATER PUBLIC AREA



GREY WATER PUBLIC AREA



BLACK WATER SCHOOL



GREY WATER SCHOOL

CHOICE OF AHU MACHINE

MODEL → AHU HOR BASIC 6.80 The air handling units AHU-HOR are specifically designed for the control of the room temperature required in operating theatres, such as fresh air change, temperature and humidity control, filtration and pressure control.
Available in 5 standard sizes, from 2.000 to 11.500 m³/h. They can be in two versions, BASIC and RECOVERY.
BASIC: with extraction fan, double stage of filtration on supply air, cooling and dehumidification, heating, humidification by steam from the network or self-produced.
DIMENSIONS:
Length= 2500 mm
Depth= 1620 mm
Height= 2520 mm



Politecnico Di Milano
Scuola Di Architettura
Urbanistica e Ingegneria
dell Costruzioni
Dipartimento di
Architettura e Studi - urbani - DASTU

ARCHITECTURE DESIGN STUDIO FOR COMPLEX CONSTRUCTION

collaboration with

prof. Maria Grazia Folli
prof. Corrado Pecora
prof. Giovanni Dotelli
prof. Lavinia Chiara Tagliabue
prof. Francesco Romano

(Design)
(Structure)
(Material)
(BIM)
(MEP)



HARRISON WAGOR 895479
SADEGH HAGHIGAT 894291