

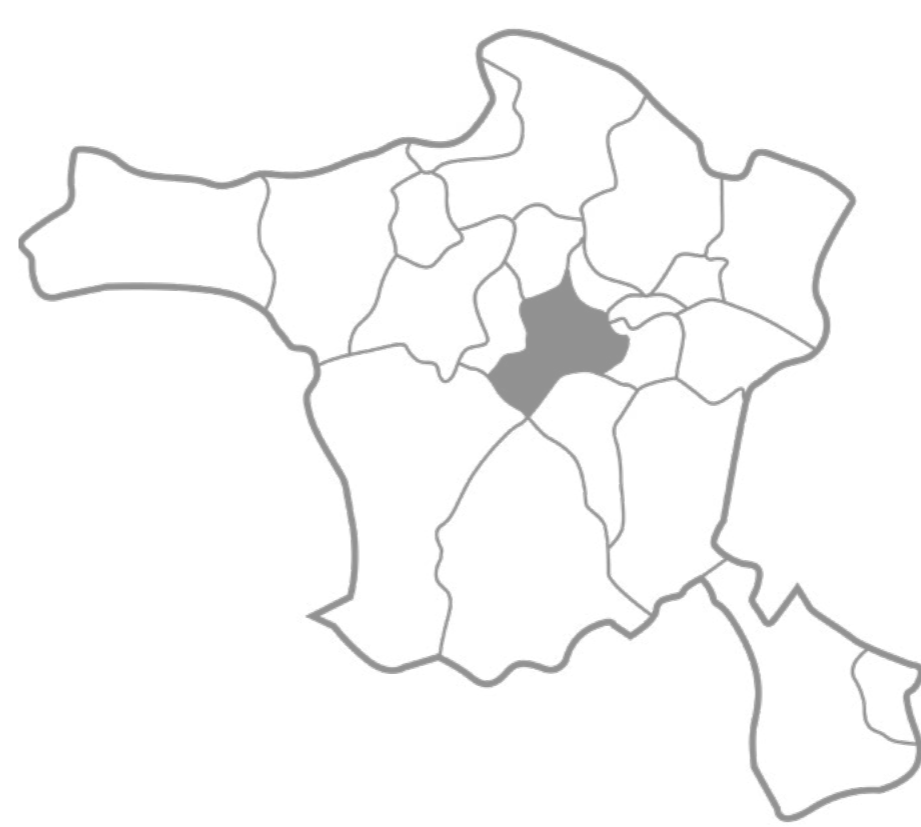
## Geographical Location of Turkey | Ankara | The site



Turkey's location



Ankara's location

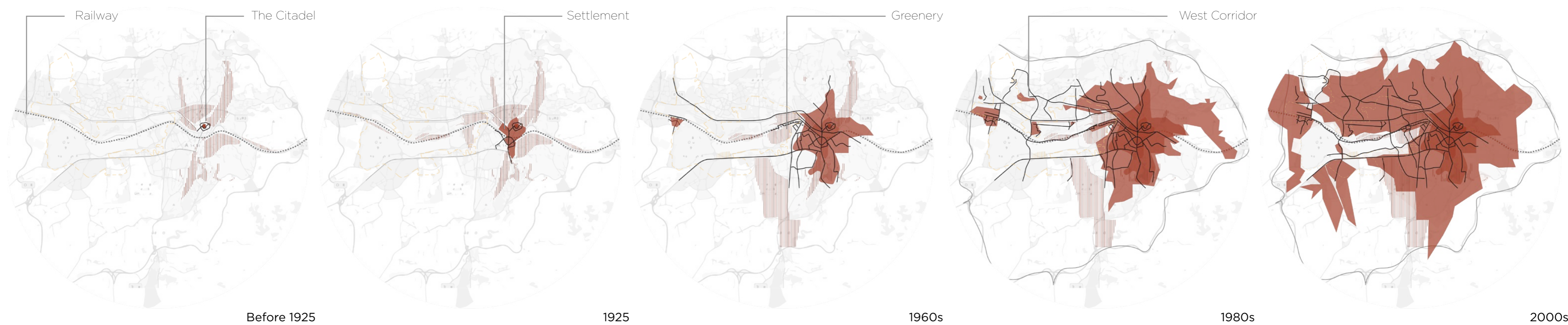


Central Districts of the capital of Republic of Turkey, Ankara

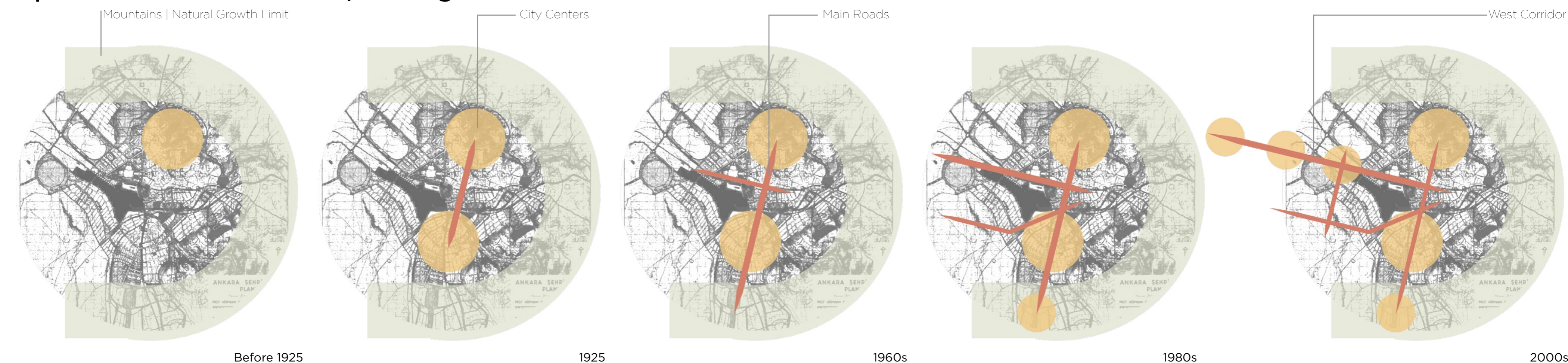


Main center of Ankara, AOÇ as marked in gray

## Urban Growth of Ankara

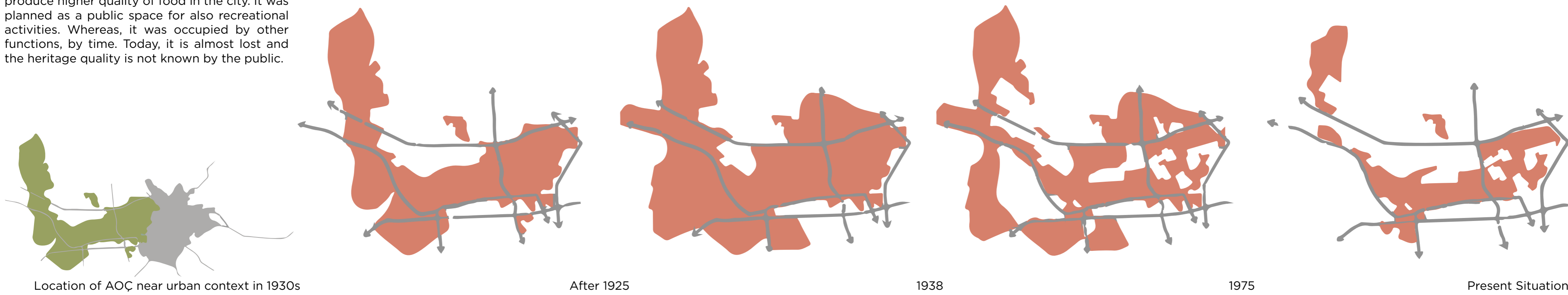


## Expansion to West Corridor | Shifting of Centers in Ankara

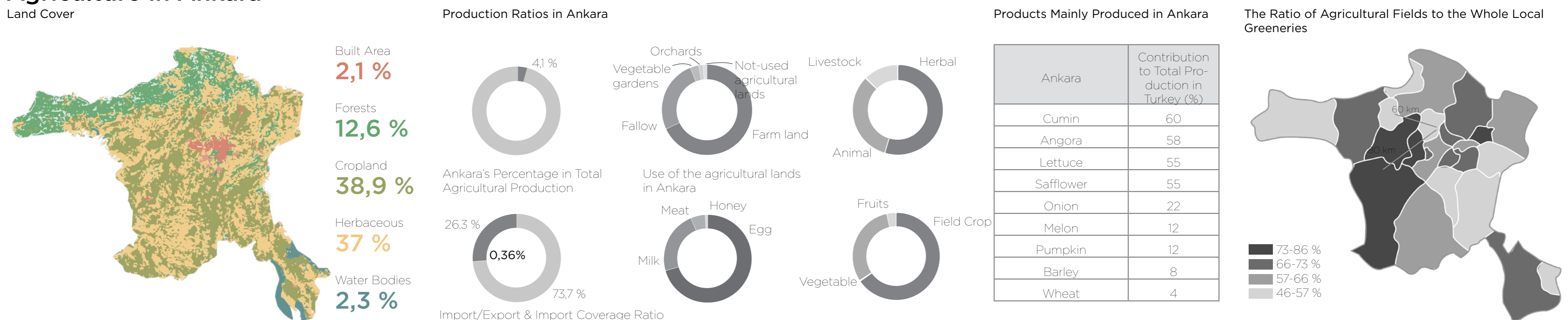


## Atatürk Forest Farm | Modern Capital's Green Production & Recreation Area | Its Evolution in Time

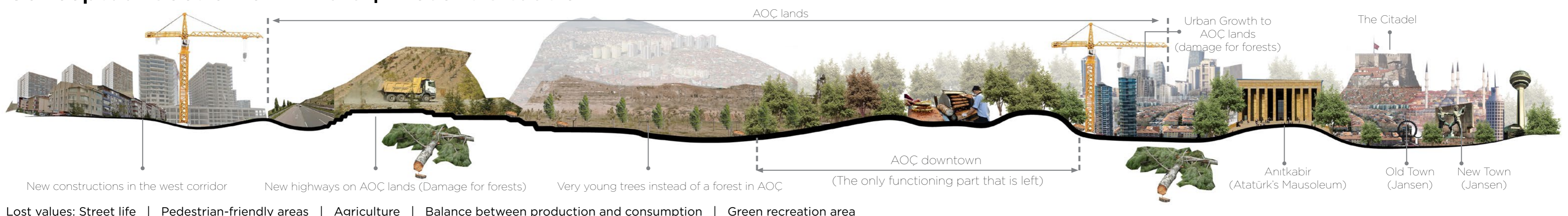
A forest farm near the city center in order to produce higher quality of food in the city. It was planned as a public space for also recreational activities. Whereas, it was occupied by other functions, by time. Today, it is almost lost and the heritage quality is not known by the public.



## Agriculture in Ankara



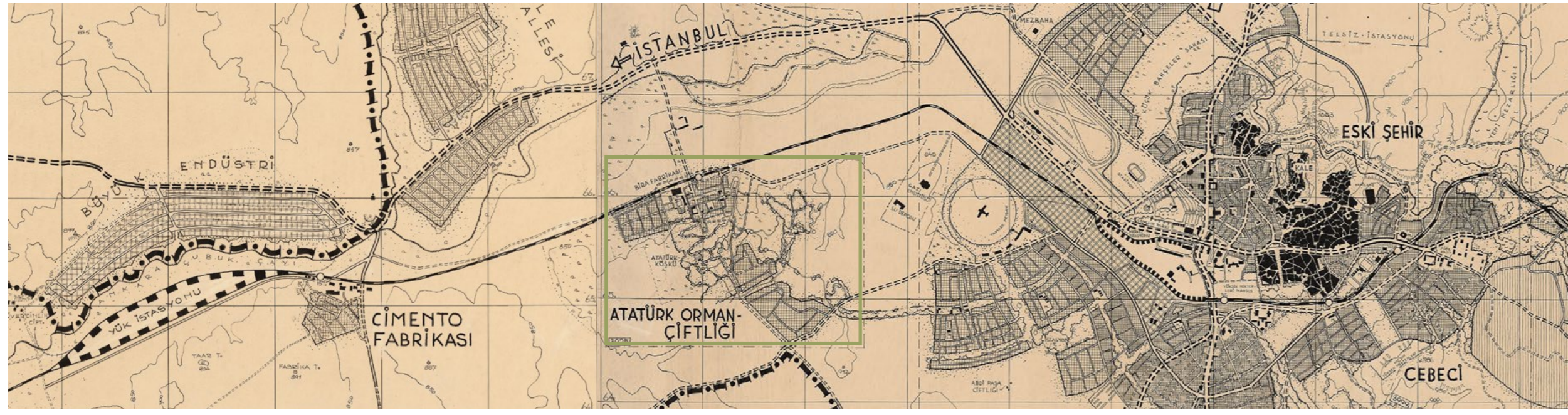
## Conceptual Section of Ankara | Present Situation



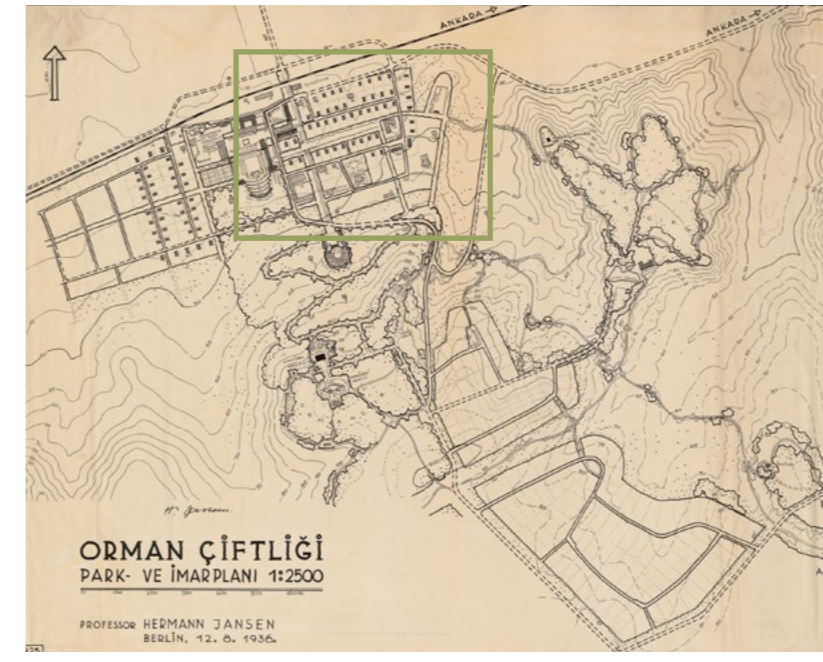
Lost values: Street life | Pedestrian-friendly areas | Agriculture | Balance between production and consumption | Green recreation area



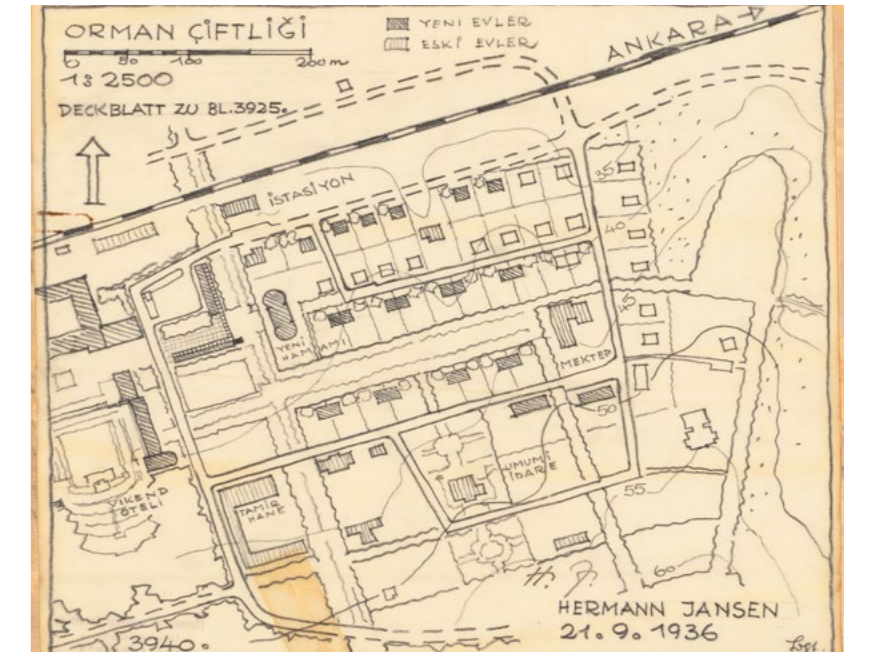
## Historical Maps of Atatürk Forest Farm (AOÇ)



Atatürk Forest Farm's location within the city



Atatürk Forest Farm's downtown design



Atatürk Forest Farm's downtown design in detail

Maps are taken from Hermann Jansen, Berlin Technical University, Architekturmuseum Archive

## Aims of the Foundation of AOÇ

After the foundation of Republic of Turkey in 1923 and announcement of Ankara as the new capital, main focus was on the agriculture, since it was perceived as the base for the economy. For this purpose, Atatürk believed that a farm near the capital was necessary to create a model new city. Following are the main motivations behind the foundation of AOÇ.

Convert the marsh into a forest	Educate peasant about new methods in agriculture	Educate and incorporate citizens about agriculture	Raise animals and give to the farmer's for breeding	AOÇ brand: several products, high quality, economic	Increase variety and quantity of products	Internship for agricultural students in the field	Use farmer's seeds more efficiently	Grow saplings to be planted in Ankara by citizens	Green promenade for citizens of Ankara, near the city

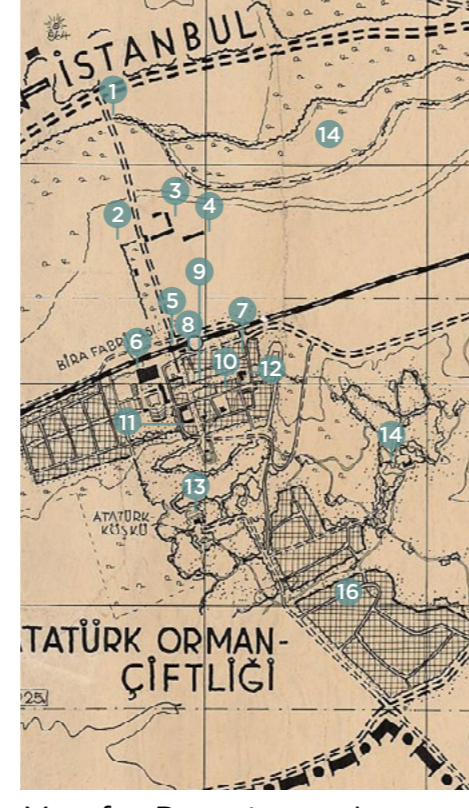
## Foundation of AOÇ and Production



Farms that Atatürk bought to create AOÇ. The lands were swamps before. They reformed them to encourage people about the possibility of agriculture in any place.



Map for Downtown, Ernst Egli



Map for Downtown, Jansen

- 1- AOÇ Bridge
- 2- Winery
- 3- Factories (honey, tomato paste, juices)
- 4- Animal barns
- 5- Gazi Train Station
- 6- Brewery
- 7- Milk Factory
- 8- Post Office
- 9- Bathhouse
- 10- Housing for Workers
- 11- Restaurant
- 12- Primary School
- 13- Marmara Pool and Villa
- 14- Karadeniz Pool
- 15- Agriculture Fields
- 16- Forests



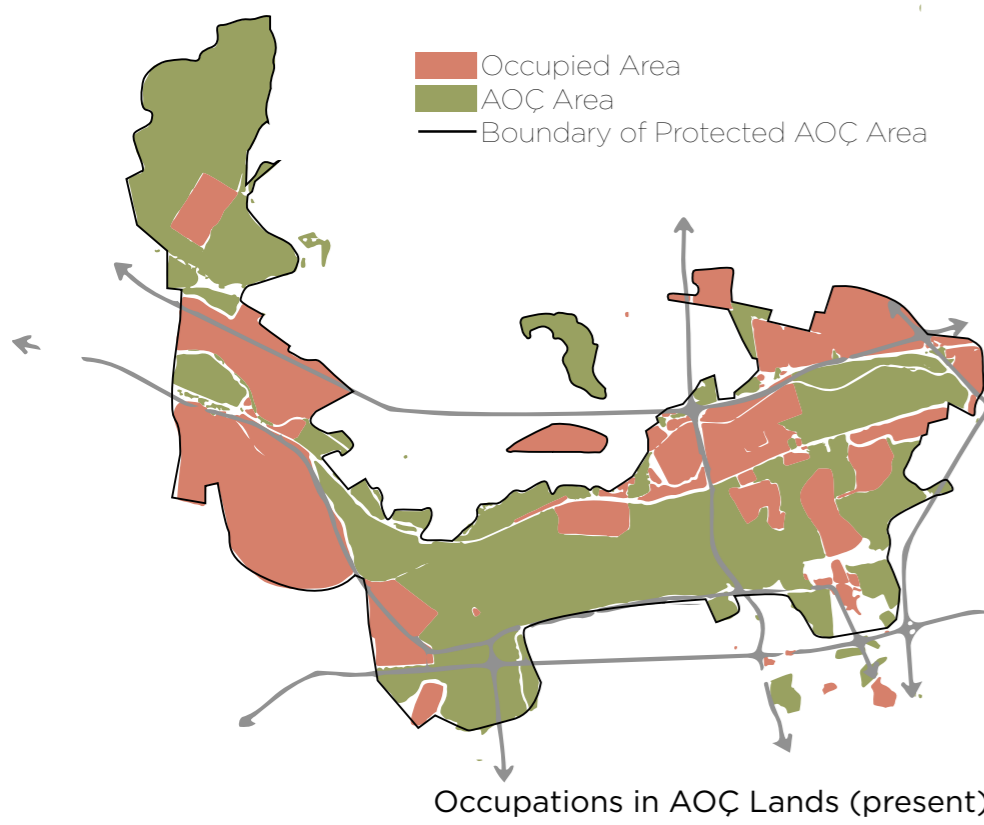
Leyla Akgüç, METU AOÇ Research Center <acarastirmalar.architetu.edu.tr>, Chamber of Architects' Archive, Lavalara <lavalara.com>

## Conceptual Section in AOÇ Downtown | Atmosphere in the First Years



## Developments about AOÇ Lands (1925-present)

Year	Event / Development	Area / Land
1925	Atatürk bought the first farm and founded the Forest Farm (Orman Çiftliği)	20,000 decares
1925	Atatürk bought other adjacent farms	80,000 decares
1926	Barley, wheat, oats, rye, corn and beet production	
1926	Elm trees, poplar trees and ash trees were planted	
1926	River was cleaned, Swamp was dried	
1928	Marmara Villa & Pool	120,000 decares
1930	Poultry and bee-keeping	
1930	Cheese production	
1930	Haylots and barns	
1930	Restaurant & Post Office	
1930	Milk Factory	
1930	Animal breeding and livestock	1- Sheep, 2- Bulls and bones
1930	Products were sold in Ankara and Istanbul	
1933	Karadeniz Pool, Brewery, 10th Year Primary School, Independent Housing, Bathhouse	
1937	Atatürk donated his farms to the Turkish state	
1938	Public spaces, Parks, zoo, restaurants	
1938	Interning opportunities for students	
1938	Malt Factory, soda and mineral water factory, winery	
1938	Orchards	
1938	7372 decares were transferred to other institutions	
1952	10139 decares were sold by the issue of special new laws	
1952	84500 decares	
1952	To prevent transfers and protect AOÇ, a law was issued	
1952	2543 decares were sold by the issue of special new laws	
1952	Sold/transferred lands	
1952	Sold AOÇ lands (Boundaries in 1952)	
1952	Others (private corporations, farmers or other tenderers etc)	
1952	Government agencies	
1952	Municipality of Ankara proposed a masterplan, which was approved to be applied	
1952	900 decares of the AOÇ lands were declared as Urban Renewal Project Area	
1952	Request to ask UNESCO for declaration of AOÇ as cultural heritage area	
1952	Court results were appealed. Constructors were legalized after they started	
1952	Removal of the protection degree was sued	
1952	Removal of the protection degree of some AOÇ lands	
1952	The plan was withdrawn by the result of the court	
1952	Construction of the withdrawn projects (Theme park, high-ways in AOÇ, Presidential Complex)	
1952	New facilities closed some parts to public / Paid facilities on old public areas	
1952	Reduction of the perceived AOÇ Downtown area	
1952	Decrease in the protection degree of some AOÇ lands	
1952	Some buildings were declared as the first degree protected area	
1952	Municipality of Ankara was authorized to propose masterplan for the protected AOÇ area by law	
1952	Municipality was sued and the approval of the masterplan were withdrawn	
1952	Municipality was sued	
1952	Municipality proposed another masterplan, which was approved to be applied	
1952	Decrease of the protection degree was sued	
1952	Project for the zoo area was sued, and withdrawn	
1952	The new large scale proposal for AOÇ's core was sued	
1952	Municipality was sued	
1952	33,000 decares	
1952	57,000 decares	
1952	AOÇ was declared as natural and historical protected area	
1952	AOÇ was declared as the first degree protected area	
1952	102,000 decares	
1952	95,000 decares	
1952	AOÇ lands	
1952	Others (private corporations, farmers or other tenderers etc)	
1952	Government agencies	
1952	Municipality of Ankara proposed a masterplan, which was approved to be applied	
1952	900 decares of the AOÇ lands were declared as Urban Renewal Project Area	
1952	Request to ask UNESCO for declaration of AOÇ as cultural heritage area	
1952	Court results were appealed. Constructors were legalized after they started	
1952	Removal of the protection degree was sued	
1952	Removal of the protection degree of some AOÇ lands	
1952	The plan was withdrawn by the result of the court	
1952	Construction of the withdrawn projects (Theme park, high-ways in AOÇ, Presidential Complex)	
1952	New facilities closed some parts to public / Paid facilities on old public areas	
1952	Reduction of the perceived AOÇ Downtown area	
1952	Decrease in the protection degree of some AOÇ lands	
1952	Some buildings were declared as the first degree protected area	
1952	Municipality of Ankara was authorized to propose masterplan for the protected AOÇ area by law	
1952	Municipality was sued and the approval of the masterplan were withdrawn	
1952	Municipality was sued	
1952	Municipality proposed another masterplan, which was approved to be applied	
1952	Decrease of the protection degree was sued	
1952	Project for the zoo area was sued, and withdrawn	
1952	The new large scale proposal for AOÇ's core was sued	
1952	Municipality was sued	
1952	33,000 decares	
1952	57,000 decares	
1952	AOÇ was declared as natural and historical protected area	
1952	AOÇ was declared as the first degree protected area	
1952	102,000 decares	
1952	95,000 decares	
1952	AOÇ lands	
1952	Others (private corporations, farmers or other tenderers etc)	
1952	Government agencies	
1952	Municipality of Ankara proposed a masterplan, which was approved to be applied	
1952	900 decares of the AOÇ lands were declared as Urban Renewal Project Area	
1952	Request to ask UNESCO for declaration of AOÇ as cultural heritage area	
1952	Court results were appealed. Constructors were legalized after they started	
1952	Removal of the protection degree was sued	
1952	Removal of the protection degree of some AOÇ lands	
1952	The plan was withdrawn by the result of the court	
1952	Construction of the withdrawn projects (Theme park, high-ways in AOÇ, Presidential Complex)	
1952	New facilities closed some parts to public / Paid facilities on old public areas	
1952	Reduction of the perceived AOÇ Downtown area	

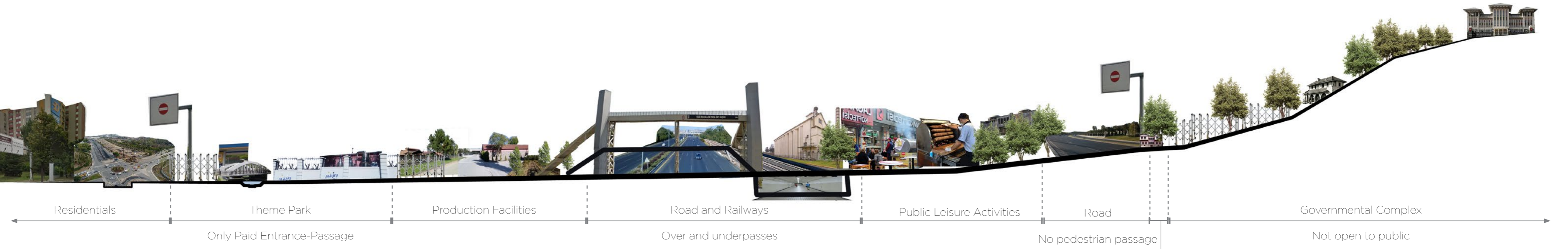


- 1- Agriculture field
- 2- Picnic area
- 3- Picnic area - not public
- 4- Agriculture field
- 5- Agriculture field
- 6- Agriculture field
- 7- Hobby gardens
- 8- Agriculture field
- 9- Forest
- 10- Path in the forest
- 11- Walkable street
- 12- Walkable street
- 13- Forests
- 14- Old Marmara Hotel
- 15- Forest
- 16- Forest
- 17- Highway



- 1- Crossover road
- 2- Ankapark
- 3- Picnic area - not public
- 4- Ankapark
- 5- Car parking
- 6- Ankapark (construction)
- 7- Useless
- 8- Expanded road
- 9- Crossover road
- 10- Underpass road
- 11- Expanded road - not-public
- 12- Expanded road
- 13- New car entrance
- 14- Residential complex
- 15- Governmental complex
- 16- Expanded road
- 17- Crossover road above the expanded highway

## Conceptual Section in AOÇ Downtown | Present Atmosphere



## Historical Analysis | Synchronic Map



- Settlements
- In 1839 (started in BC 200)
  - 1925
  - 1928
  - 1936
  - 1957
  - 1990s
  - After 2006

- Roads
- In 1839 (started in BC 200)
  - 1925
  - 1937
  - 1976
  - After 2002

- Vegetation & Parks
- Until 1925
  - 1960s
  - 1990s
  - After 2013

- Popular Activity Places (Open/Closed)
- Until 1925
  - 1930s
  - 1950s
  - 1990s
  - After 2010



## Blue Infrastructure Analysis



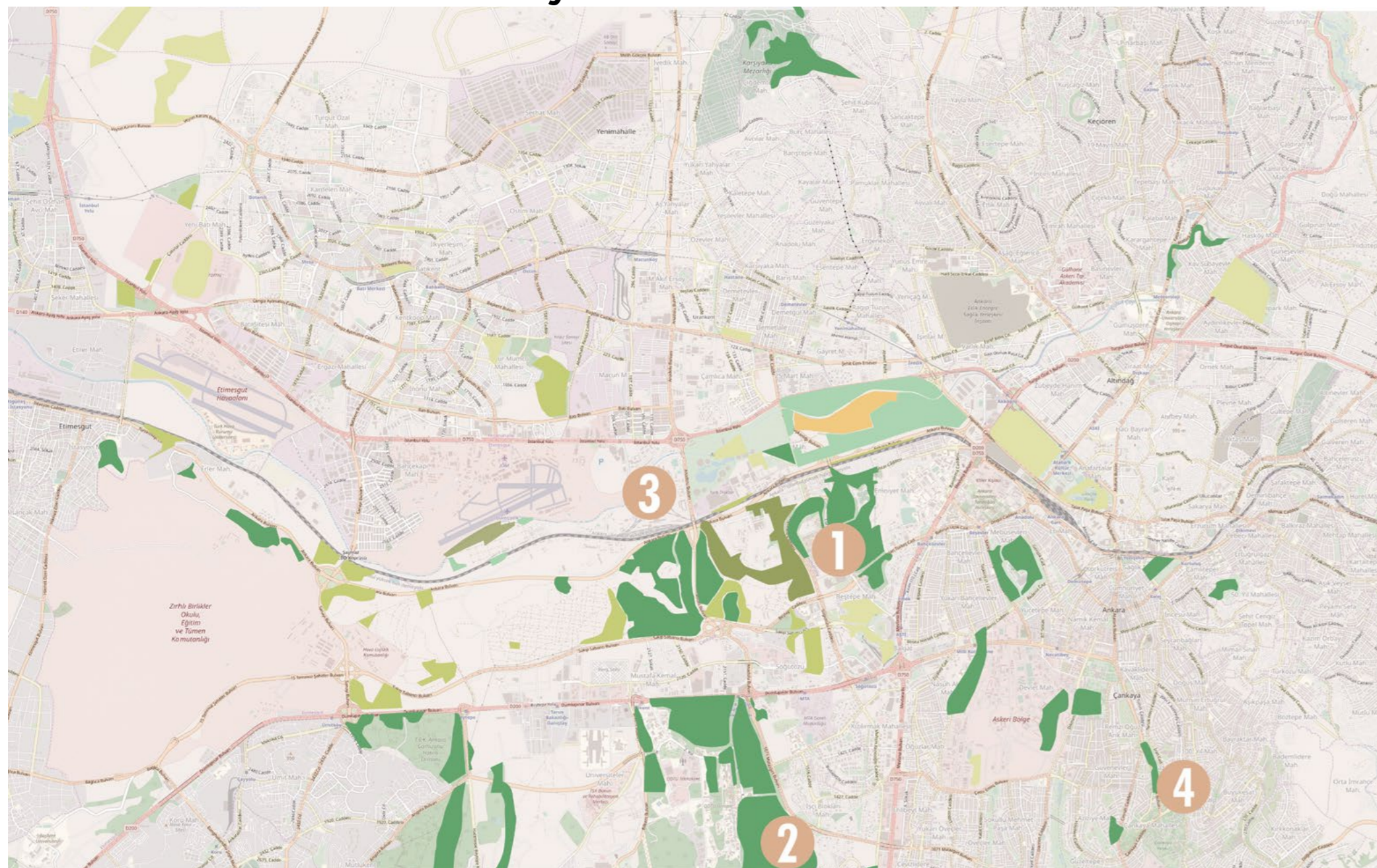
Conclusion

- Rivers
- Underground Canals
  - Ataturk Forest Farm's Pools
  - Youth Park
  - Goksu Park
  - Lakes in the Universities

- Polluted & Smelling River
- Covered Rivers (Roads / Soils)
- De-functioned Pools



## Green Infrastructure Analysis



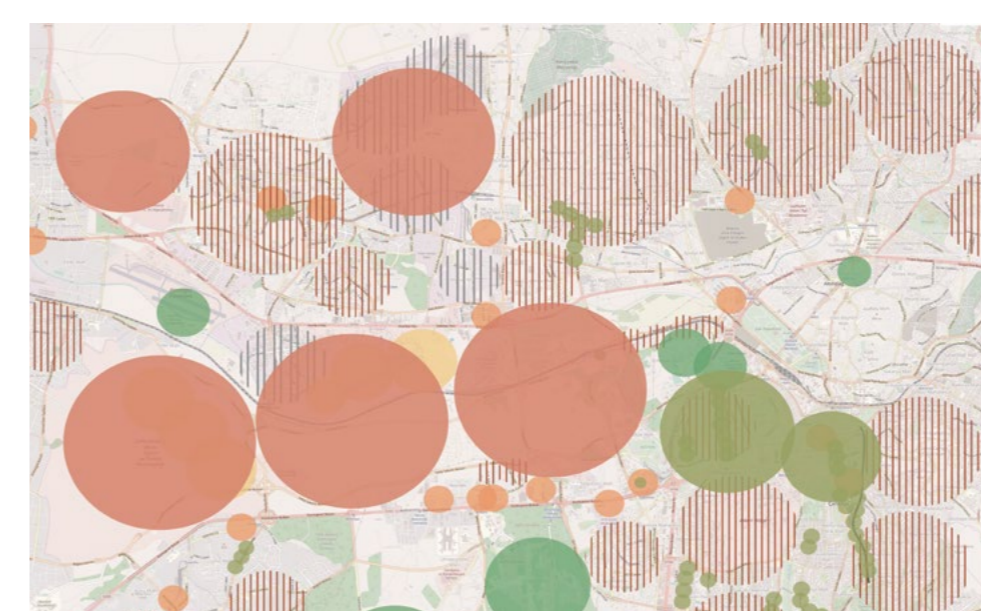
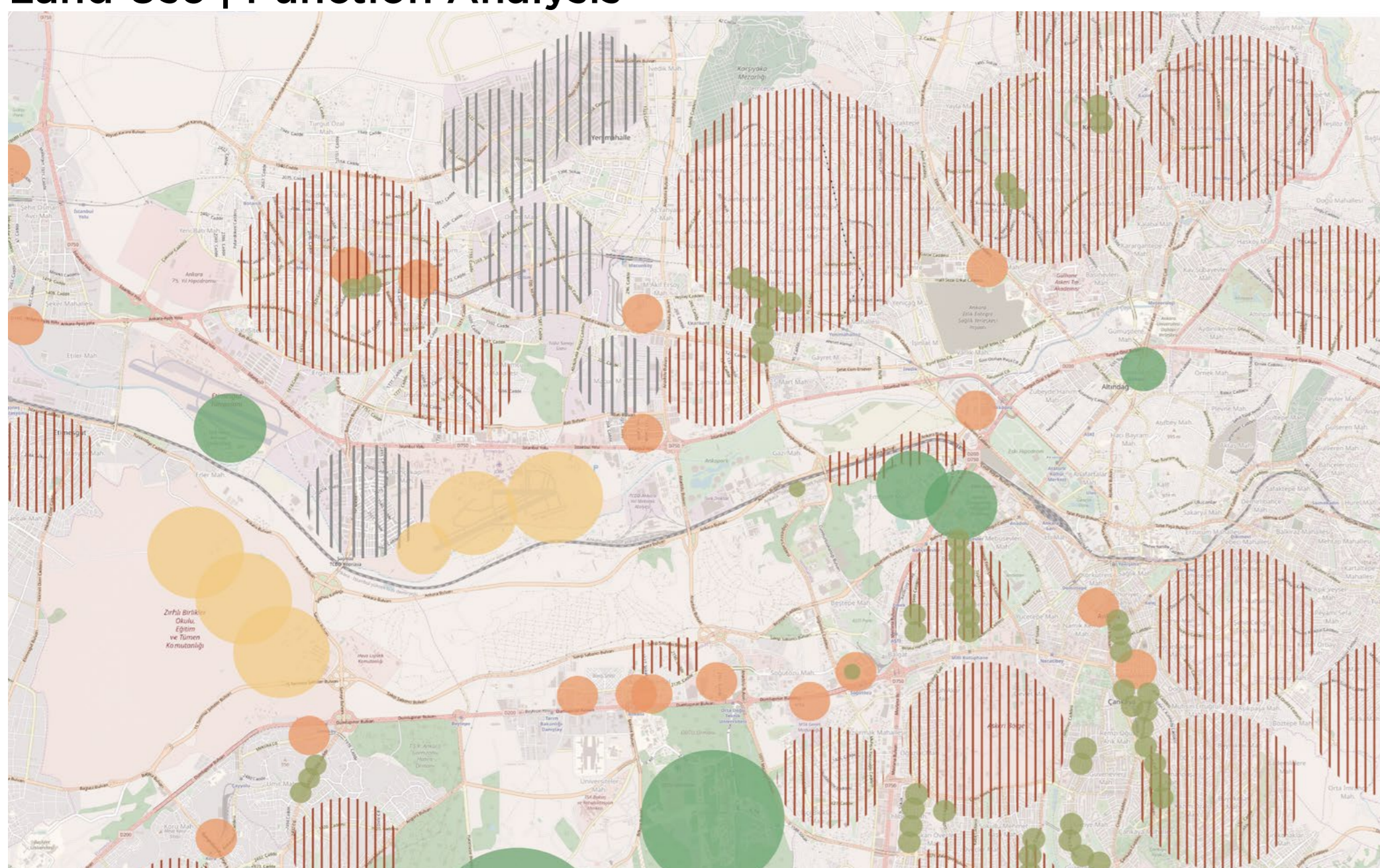
Conclusion

- Nursery Garden
- Orchards, Vineyards
- Greenery with Trees
- Cultivated Area
- Afforestation Area
- Park - Greenery
- AOC Forests
- METU Forests
- Ankapark - Theme Park
- Seğmenler Park

- Disconnection Between the Greens
- Underutilized Lands
- Fragmented Greens
- To-be Enhanced Greens
- Well-working Greens (METU organization)



## Land Use | Function Analysis



Conclusion

- Common Public Streets
- Universities
- Residential Districts
- Shopping Malls
- Military Zones
- Industrial Zones
- Useless 'voids' within the city
- Most popular & accessible public spaces



All the photos were taken from the following sources, unless stated otherwise: METU AOC Research Center, Chamber of Architects' Archive, <agingmodernism.wordpress.com>, Ahmet Soyak, Mustafa Taskin



## Accessibility Analysis | Public Transportation | Trains & Metro



Conclusion

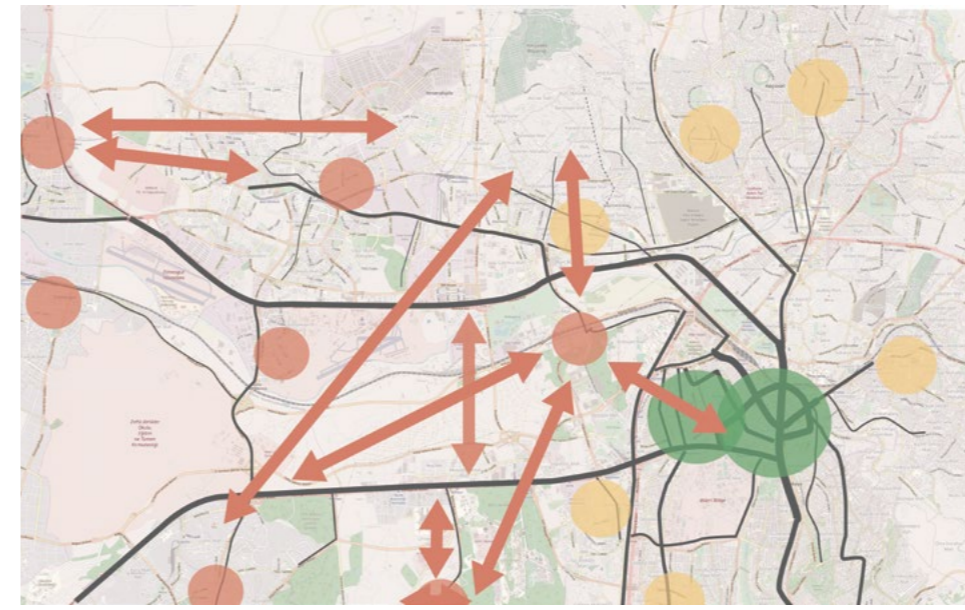
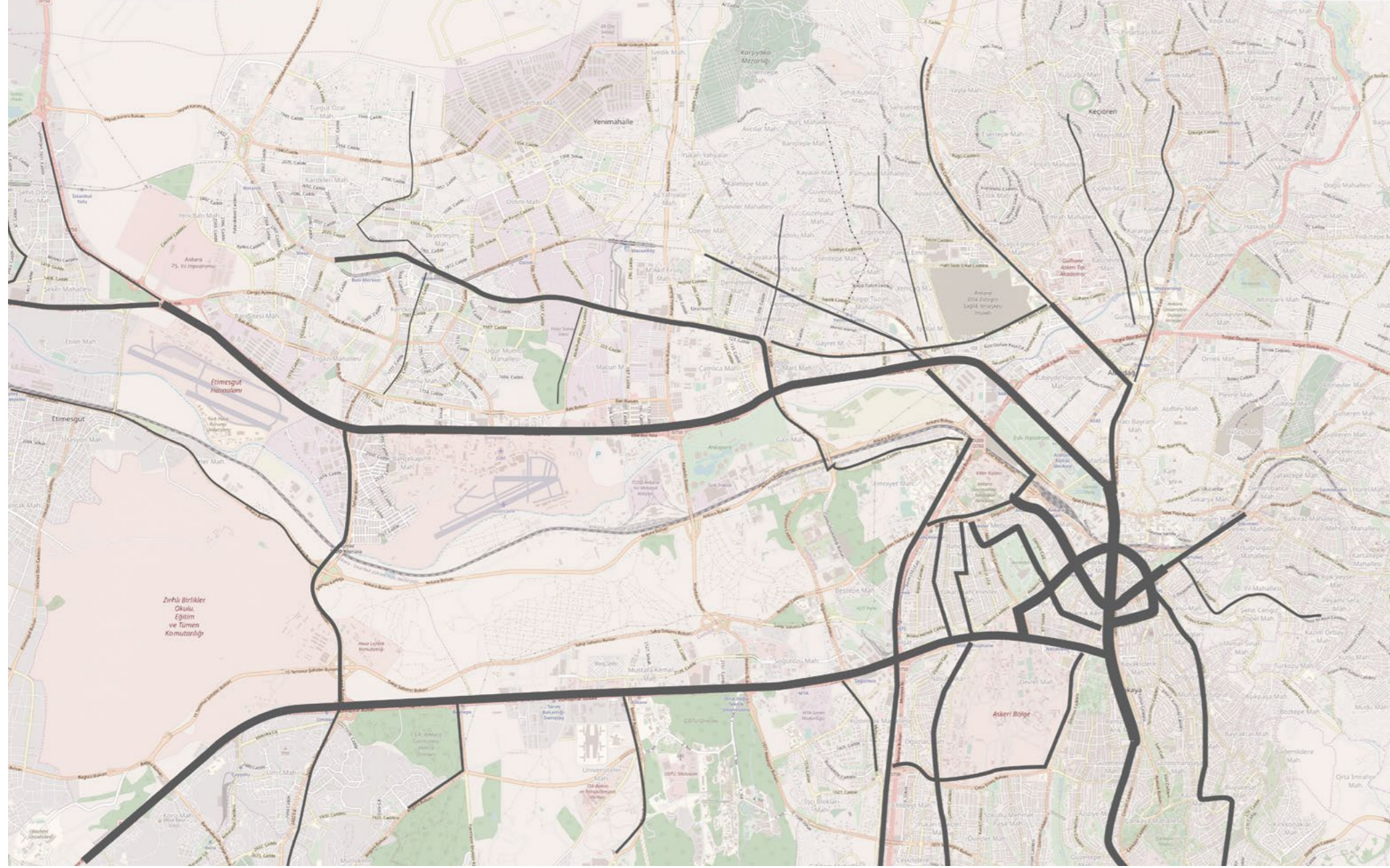
- Railway & Local Train Stations
- M1 Metro Line
- M3 Metro Line
- Ankara Metro Line
- Funicular
- Transfer Stations
- High Speed Train Stations
- The only connection to access everywhere
- Existing connection between north and south sides and AOC
- Missing connection nodes
- Missing connections
- Districts connected to the city center by metro



Taken by Rabia Gürkan



## Accessibility Analysis | Public Transportation | Buses



Conclusion

- Bus Infrastructure (Thickness Represents Density)
- Well-working Bus Infrastructure
- Unproblematic Bus Infrastructure
- Weak Bus Infrastructure
- Missing Bus Connections (Between residential - from residential to AOC)

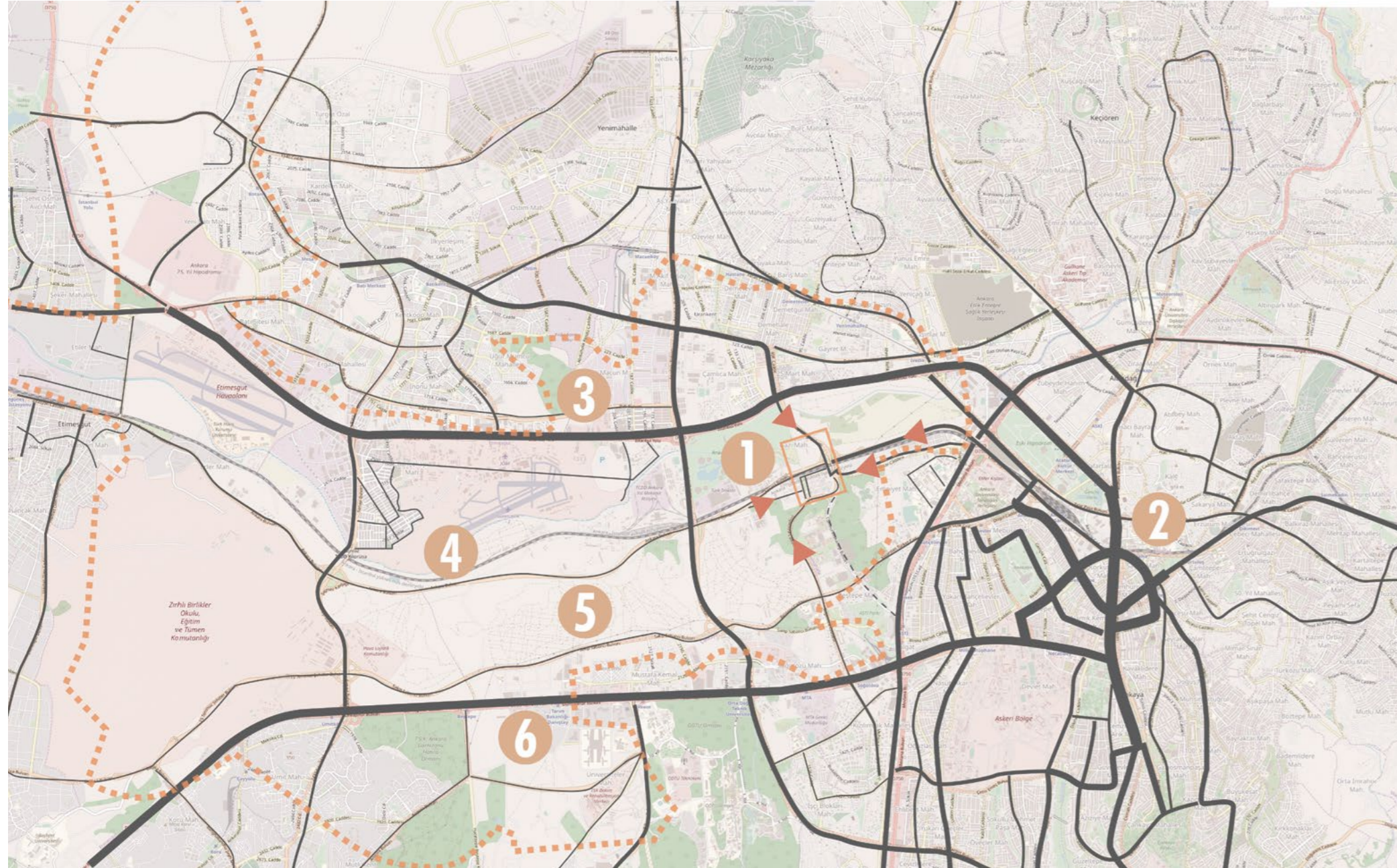


Taken from Google Photos



Taken from Google Street View

## Accessibility Analysis | Private Transportation



Conclusion

- Roads | Thickness Represents Traffic Density
- AOC Boundaries
- Access to the Site
- ① AOC Downtown
- ② City Center - Kizilay
- ③ Istanbul Road
- ④ Ankara Boulevard
- ⑤ Sakıp Sabancı Boulevard
- ⑥ Eskişehir Road
- Car park
- ||| Side street parking
- Not necessary roads on the AOC lands
- Districts that are connected easily to the AOC site by private transportation



Taken by Rabia Gürkan

## Accessibility Analysis | Pedestrian Comfort | Quality of the Streets



Highway and Railway Bridges in Sihhiye



Highway bridge for U-turn in Sihhiye



Overpass in Kizilay



Kizilay | People prefer to cross by zebra



An overpass in Kizilay



Taken by Rabia Gürkan



Eskişehir Road, south part of the city



Highway bridge for U-turn in Sihhiye



Overpass in Kizilay



A kiosk in Kizilay



An overpass in Kizilay



Taken by Rabia Gürkan



Sidewalk in Eskişehir Road, behind is AOC



A street in Kavaklıdere



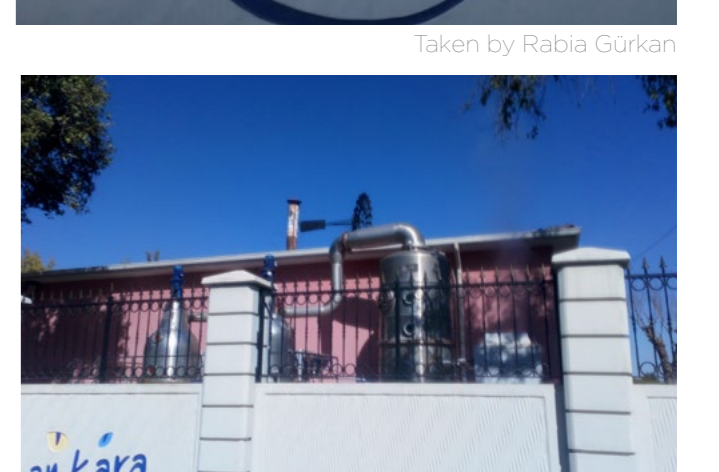
Overpass in Kizilay



A kiosk in Kizilay



An overpass in Kizilay



Restrictions in public AOC lands

Taken by Rabia Gürkan



## Stakeholders Analysis | Actors

Stakeholder	Type of Actor	Resources	Needs & Expectation	Current Actions	Expected Actions
AOÇ Administration	Bureaucratic actor	Legal	Improve the productivity and social/economic/production quality of AOÇ	Keeps AOÇ brand alive (food, drinks, seeds, saplings)	Workshops to increase awareness   internship opportunity for students   more job opportunities   give seeds & breeding animals & saplings to peasants   have a larger share in markets for AOÇ brands   Tell people the quality and production of these brands
Municipality of Ankara	Political actor	Political	Maintain & increase the cultural heritage of AOÇ	Bought the lands to cultivate the areas	Organizations in AOÇ to reactivate the area
Governing Party of Turkey	Political actor	Political	Show their power and position	Changes the laws to legalize the segmentation of AOÇ   Aggressive about opposite ideas   Perceives the AOÇ as a battle field	Be supportive about the heritage of 'all' citizens with different ideas   Gets in touch with public
Cultural and Natural Heritage Preservation Board	Bureaucratic actor	Legal	Protect the AOÇ Land	Sets the protection degrees for AOÇ	Be against the changes in the laws & protection degrees of heritage sites   stop loss of them for economic & political interests   defend the protection of the areas
Chamber of Architects	Special interest	Legal	Maintain & increase the cultural heritage of AOÇ	Stops the law-changes   renting of the AOÇ lands   announces people the importance of the area	Organize seminars in the universities & schools & public places to increase the awareness of AOÇ   Encourages people to attend activities here
University Professors	Special interest	Organization	Maintain & increase the cultural heritage of AOÇ	Supports Chamber of Architects about their defense of AOÇ	Organize seminars in the universities & schools to increase the awareness of AOÇ   Encourages people to attend activities here & protect the area's cultural heritage
Institute of Goethe	Special interest	Organization	Maintain & increase the cultural heritage of AOÇ & Ankara	Organizes exhibitions for Jansen & Egli	Organize more often events to tell about the heritage of AOÇ and announce them to more people   Interact with other universities
Architects	Experts	Organization		Supports Chamber of Architects about their defense of AOÇ	Organize events to convey people the importance of AOÇ
Economists	Expert	Organization			Supports the production in AOÇ (both agricultural and factory products)
Ministry of Agriculture and Forestry	Bureaucratic actor	Legal	Increase the amount & quality of agricultural activities		Encourage production in AOÇ area, educate people about the production
University Students (1)	General Interest	Organization	Maintain & increase the cultural heritage of AOÇ	Protests against renting of AOÇ lands   tries spending time in few greens	Be less aggressive and negotiant & Encourage people to use AOÇ lands & brands   Tell about the value of AOÇ
University Students (2)	General Interest	Organization	Have public space to spend time   Learn more about the heritage of AOÇ	Eats night food in AOÇ	Spend more time in AOÇ   study in workstations   use open spaces rather than shopping malls
AOÇ Workers (factories, restaurants)	Special Interest		Increase the attraction and awareness of people	Be nice with visitors   Tells them about the area	Gives tours to the lands and production facilities & involve visitors
Citizens (1) (spent time in AOÇ when younger)	General Interest		Maintain & increase the cultural heritage of AOÇ	Be upset about the fragmentation of AOÇ   Tells their memories to their friends	Attend events to share their memories with people   Spend more time in AOÇ   Tell other people about heritage of AOÇ
Citizens (2) (moved to Ankara later - no emotional connection to AOÇ)	General Interest		Learn more about the heritage of AOÇ	Eats night food in AOÇ	Attend the activities in AOÇ   Learn about the importance of AOÇ   Feel more belonged to AOÇ   Use hobby gardens
Tourists	General Interest			Thinks Ankara is not worth visiting & There are no activities to enjoy	Visits more often Ankara for touristic purposes   Tells others about the beautiful Forest Farm concept in Ankara
Peasants	Economic Interest		Improve quality of their products		Get lectures & attend to workshops in AOÇ   Get seeds & saplings & breeding animals for their farms
Unemployed People	Economic Interest		Get employed		Works in AOÇ as a farmer, tour guide, factory worker, cook, harvester, organizer, site observer, teacher

## Social Analysis | Ideologies

### Reactions

1938-1990 - no rejection for the selling of the lands  
1992 - protected site, stopped selling  
After 2006 - worse disintegration | few people reacted

### Opinions of the Actors

"Annuity is the most important consideration." Former Municipality of Ankara

Special laws were issued to legalize the actions on the heritage sites such as the construction of residential, renting the lands etc.

Chambers sued the actions, former municipality continued building

"Traffic is a problem" Former Municipality of Ankara

High-speed, wider roads were built.

Not walkable city, underdeveloped public transportation. -> More cars, more traffic jam, no solution

"Making Ankara's name is important" Former Municipality of Ankara

Paid entertainment park, Ankapark (2019). It was supposedly the 'biggest entertainment park of Europe'. Gigantic toys destroyed the silhouette of the city. The area is less walkable than before, besides, the park is not functioning.

"Power and fanciness are very important, as well as untouchableness." Governing Party

Residential for the president on the hill, initial place of AOÇ. Change of the house of the president for the first time in the history of the Turkish Republic.  
Damage of the trees, replacement with imported expensive decorative plants.  
Isolated hill, police control, fences around.

"Illegal palace" Society

Although the execution decision by the court, it was built.

"It is a dissent action to build the palace to the place where Atatürk pointed for foundation of AOÇ" Society

Suing Organization	Number of Cases
Chamber of Architects Ankara Branch	54
Chamber of Agricultural Engineers	22
Chamber of Landscape Architects	22
Chamber of City Planners	21
Chamber of Environmental Engineers	21
Ankara Bar Association	2

## Strengths

### Spatial

\* Location of AOÇ within Ankara

### Environmental

\* Fertile soil quality  
\* River passing from the whole area

## Opportunities

### Social

\* Citizens prefer to use more often a green open space close to their residential districts, rather than the picnic parks on the periphery of Ankara  
\* Nearby universities and conscious youth population

### Economic

\* Citizens of Ankara tend to buy organic products when it's possible (by the milkmen, the street bazaars and the close villages)

### Spatial

\* Nearby residential areas: if a better connection would be provided, people would visit here more often

### Protests

Gezi Park Protests: People defended the park in Istanbul and prevented the construction of the shopping mall.  
AOÇ Protests: Very few people attend. Only chambers, some professors, some students. Not successful protests. AOÇ lost its lands, trees, functions, production and so on.

**Reasons of the low number of defenders for the rights of the AOÇ lands:**  
-Lack of awareness of the boundaries, real function and ideas behind AOÇ  
-Lack of transfer of the values to the next generation

"I cried when they cut the trees in AOÇ." Mom

"It's another not-interesting project of the municipality" Son

People should learn better the function and aims of AOÇ and they should feel belonged to the area.

"The palace is much better than AOÇ facilities. It's great that it was built!" Supporters of the governing party

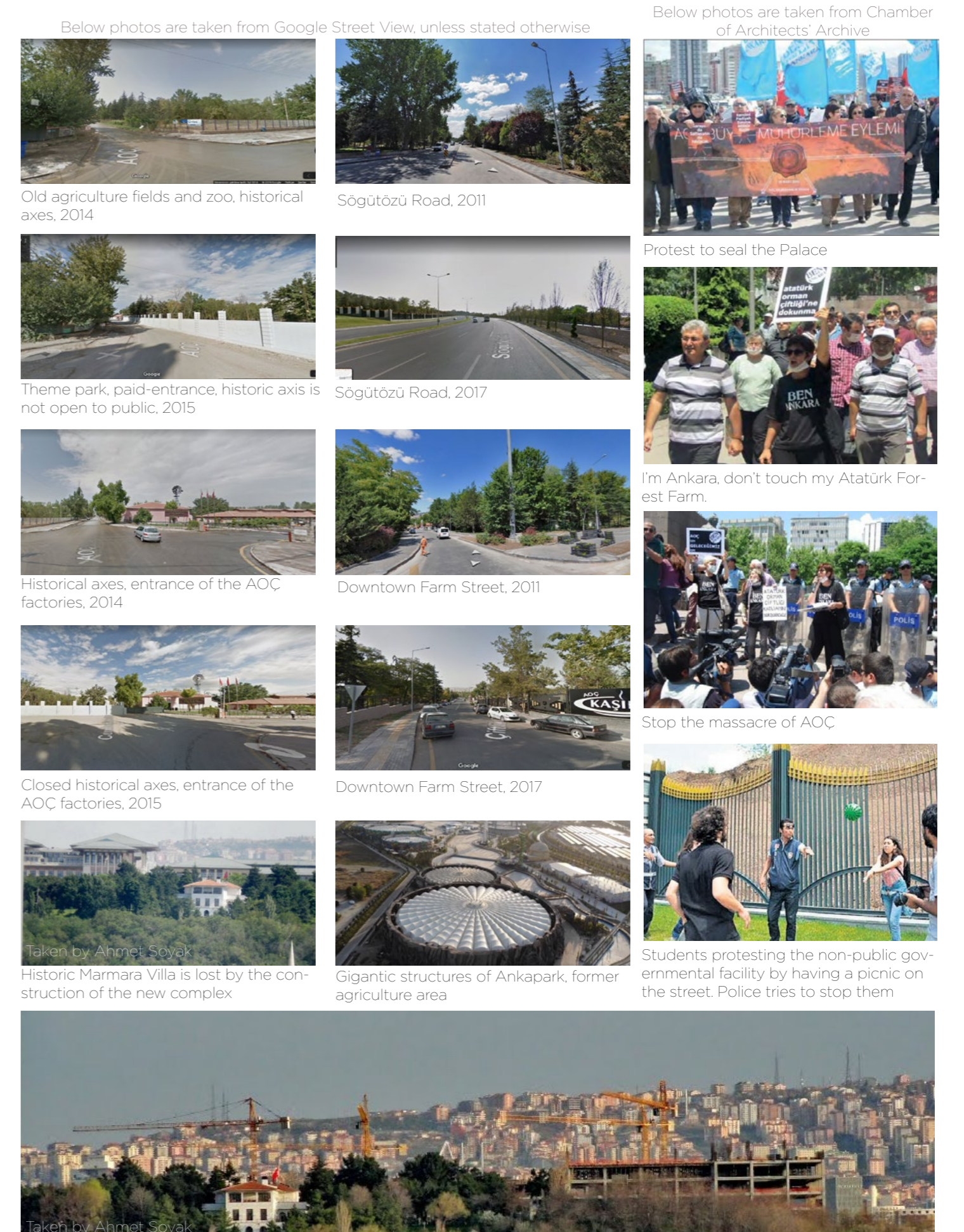
**Wrong perception:** AOÇ is not a symbol of any political idea. It aims to provide a better economy to the city, while having a sustainable food chain and give citizens open green areas, and provide Ankara a beautiful appearance.  
The missing understanding is that AOÇ is not against any idea or is not rivals with anyone. It is a heritage site that belongs to everyone. Instead of starting battles against it or damaging it, its value and function and ideas should be taught to everyone in order to protect it from any possible damage all together. The awareness should be increased for everyone.

"Increase in the agricultural production and education on agriculture are important." Present Municipality of Ankara

Better things happen today for Ankara.

"Agriculture is the basis of the economy." Atatürk

"Eyes that do not have a vision to green are deprived of the pleasure of colors. Afforest here so beautiful that even a blind person can realize that he is among the greens." Atatürk



## Weaknesses

### Spatial

\* Weak connection between north & south sides of the city  
\* Edge quality of AOÇ: it is perceived as an abandoned void in the middle of Ankara, it is not encouraged to walk around or enter inside  
\* Public transportation: lack of transfer points between metro & train system, weak bus network for non-central districts)

### Environmental

\* Very few vegetated areas: plantation of forests and agriculture is needed

## Threats

### Social

\* Ankara is not perceived as an aesthetic capital, although it was planned as a beautiful city  
\* People do not feel belonged to AOÇ: identity and heritage is not transferred between the generations  
\* Political perception of AOÇ: it is not a value to be against for, it is not only for a part of the community. It is a cultural heritage that belongs to all citizens

### Economic

\* Rented / sold parts & ongoing sales for AOÇ lands  
\* Lack of encourage for local production & consumption of them

### Spatial

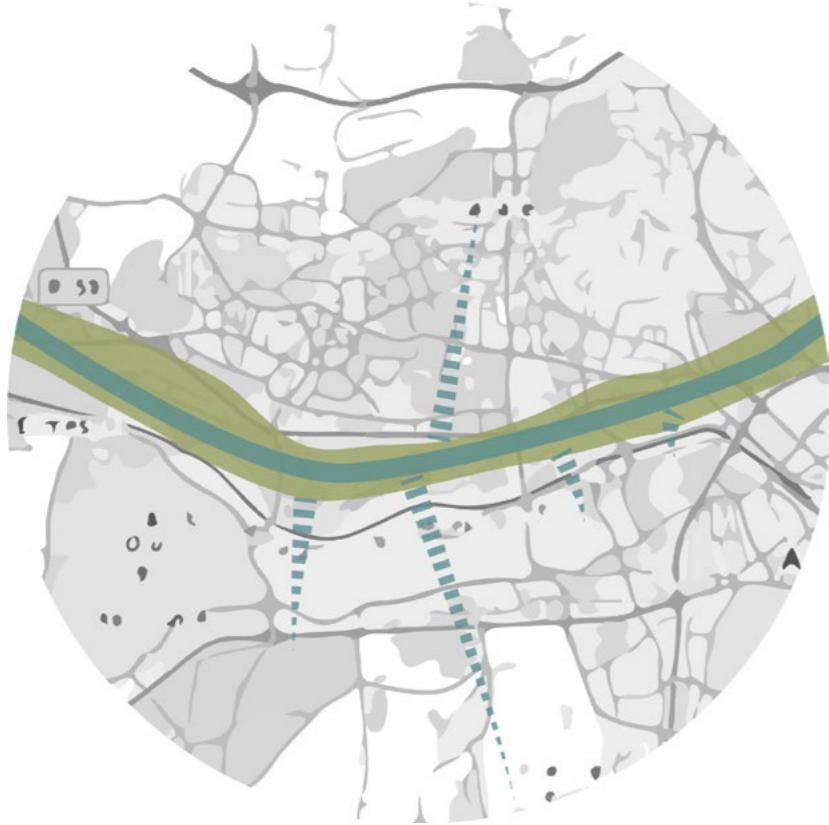
\* AOÇ is perceived like an interrupting void in the middle of the city

### Environmental

\* People tend to use private cars due to the weakness of the public transportation & traffic jam: more traffic jam  
\* Air, water and soil pollution

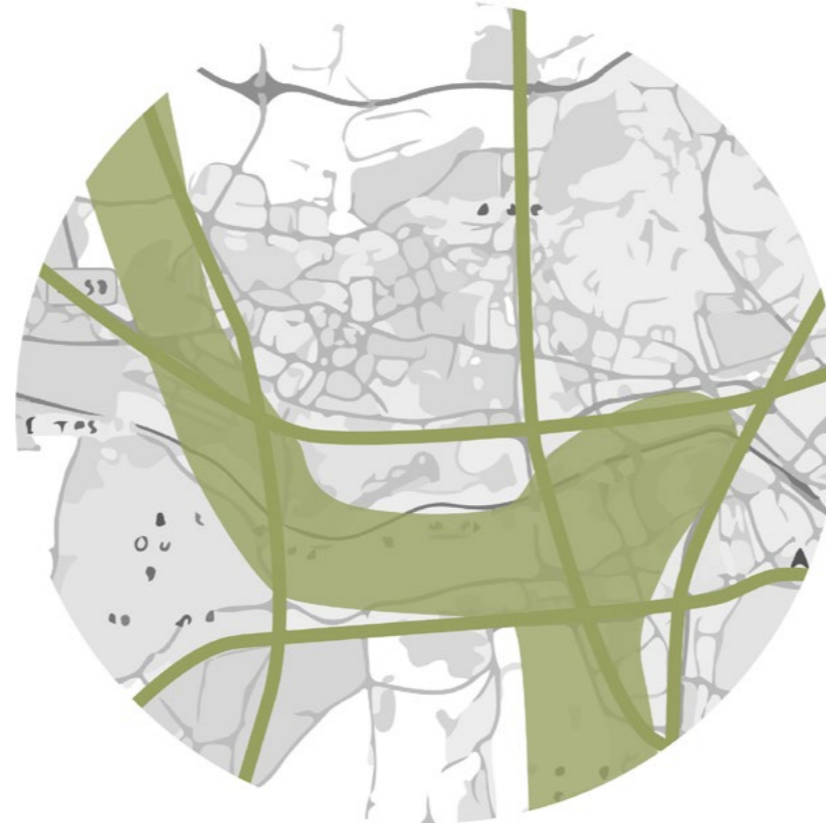


## Strategy Diagrams



Re-treatment of the river

Cleaning the river  
Riparian buffer to keep it clean and protected  
Use underground canals to irrigate the lands



Connect the greeneries and use them effectively

Green belt  
Noise and air pollution barrier



Evaluate the empty lands

Raise the awareness  
Teach the importance and the boundaries of the heritage area  
New public space in AOÇ downtown connects to the public spaces in the city center  
Working station and meeting space for university students  
Connect residential districts to AOÇ by related functions  
Paths in the forests and agriculture lands



Improve the accessibility of AOÇ

New bus network to connect residential and universities to AOÇ



Improve the accessibility of AOÇ

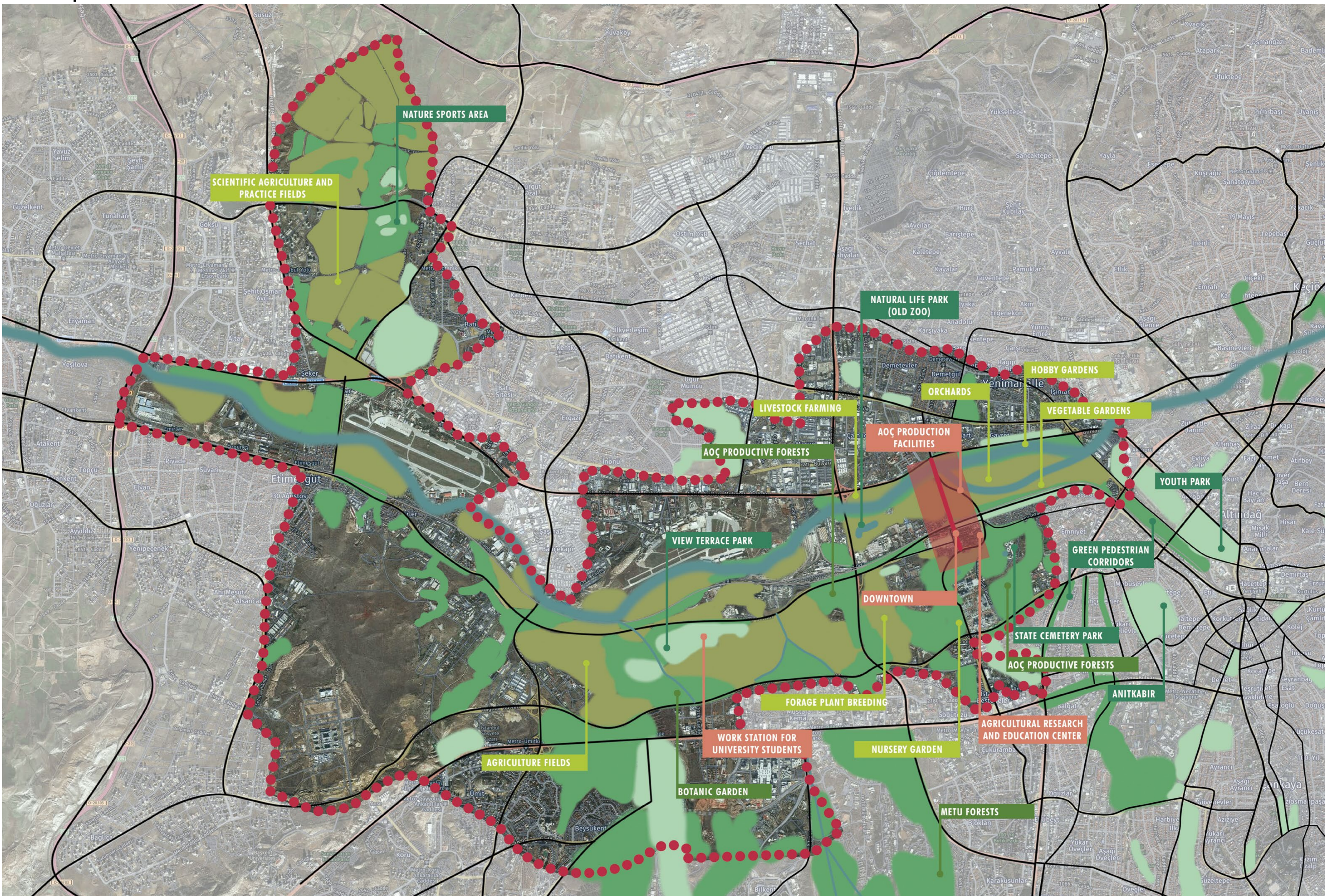
Connecting the two branches of the U-shape metro route  
Connect metro to the train in two new stations  
Bike sharing in the transfer stations



Introduce sustainable and convenient transportation method

Bike paths along the roads  
Bike sharing system  
Improve AOÇ lands with walkable pedestrian paths  
Edge treatment to AOÇ lands

## Masterplan



## Historical Analysis | Synchronic Map



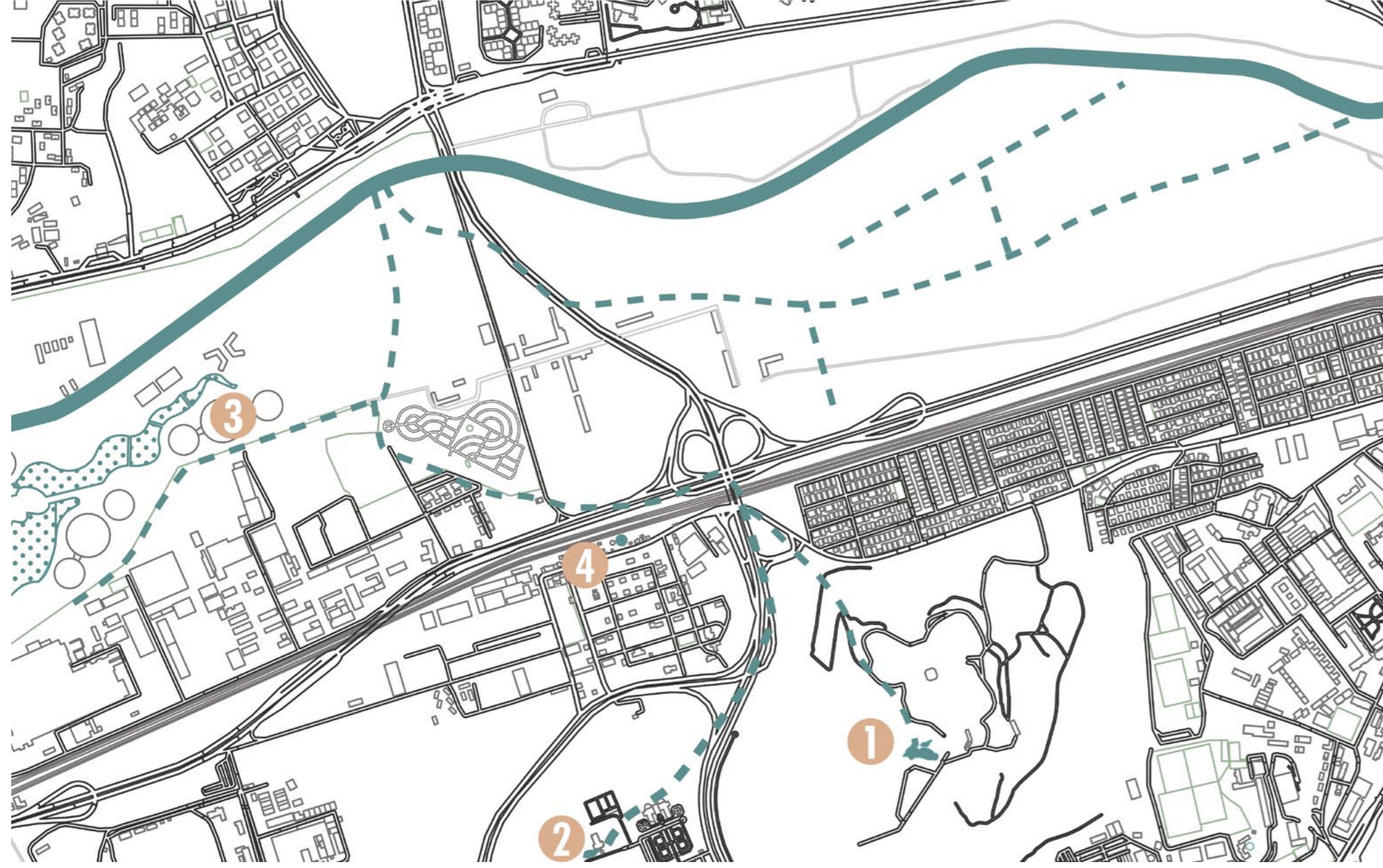
- Buildings**
  - 1925-1937
  - 1937-1976
  - 1976-2013
  - After 2013
- Water Bodies**
  - Natural Existing River
  - 1925-1937
  - After 2013
- Roads | Paths**
  - 1925-1937
  - 1937-1976
  - 1976-2013
  - After 2013
  - Extinct Roads
  - Re-constructed/Extended Roads
- Vegetation & Parks**
  - 1925-1937
  - After 1937
  - Extinct vegetation

Below photos were taken from ME:U AOC Research Center



Taken from 'Spatial Potentials of Atatürk Forest Farm in 21st Century' by Hilal Ayci

## Blue Infrastructure Analysis



- River
- Underground canals
- Pools
- Artificial water body
- 1 Karadeniz Pool
- 2 Marmara Pool
- 3 Ankapark's Pool
- 4 Water tank
- Polluted & Smelling River
- Covered Rivers (Roads / Soils)
- De-functioned Pools

Conclusion

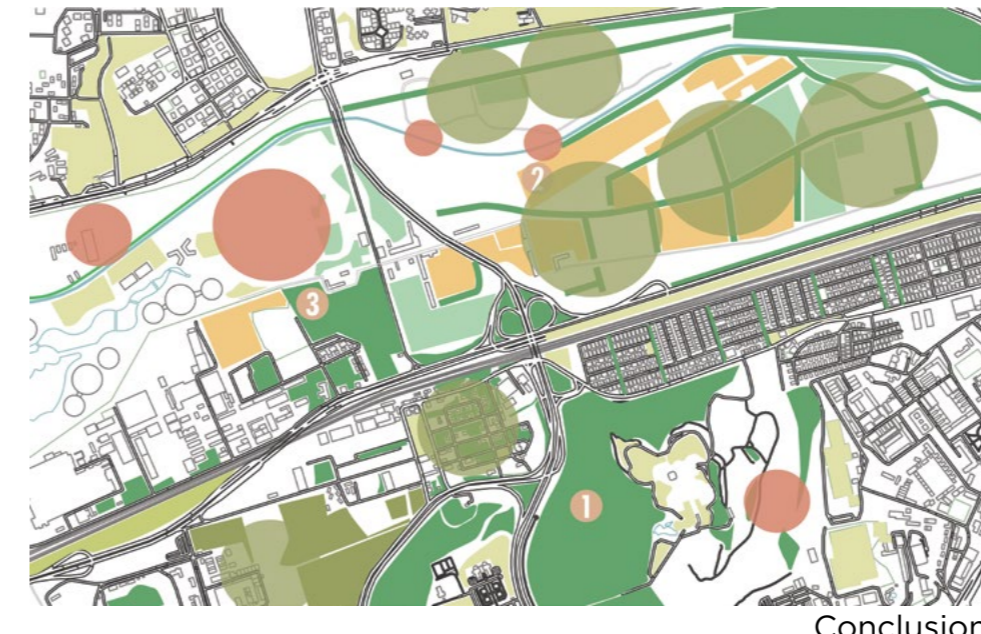
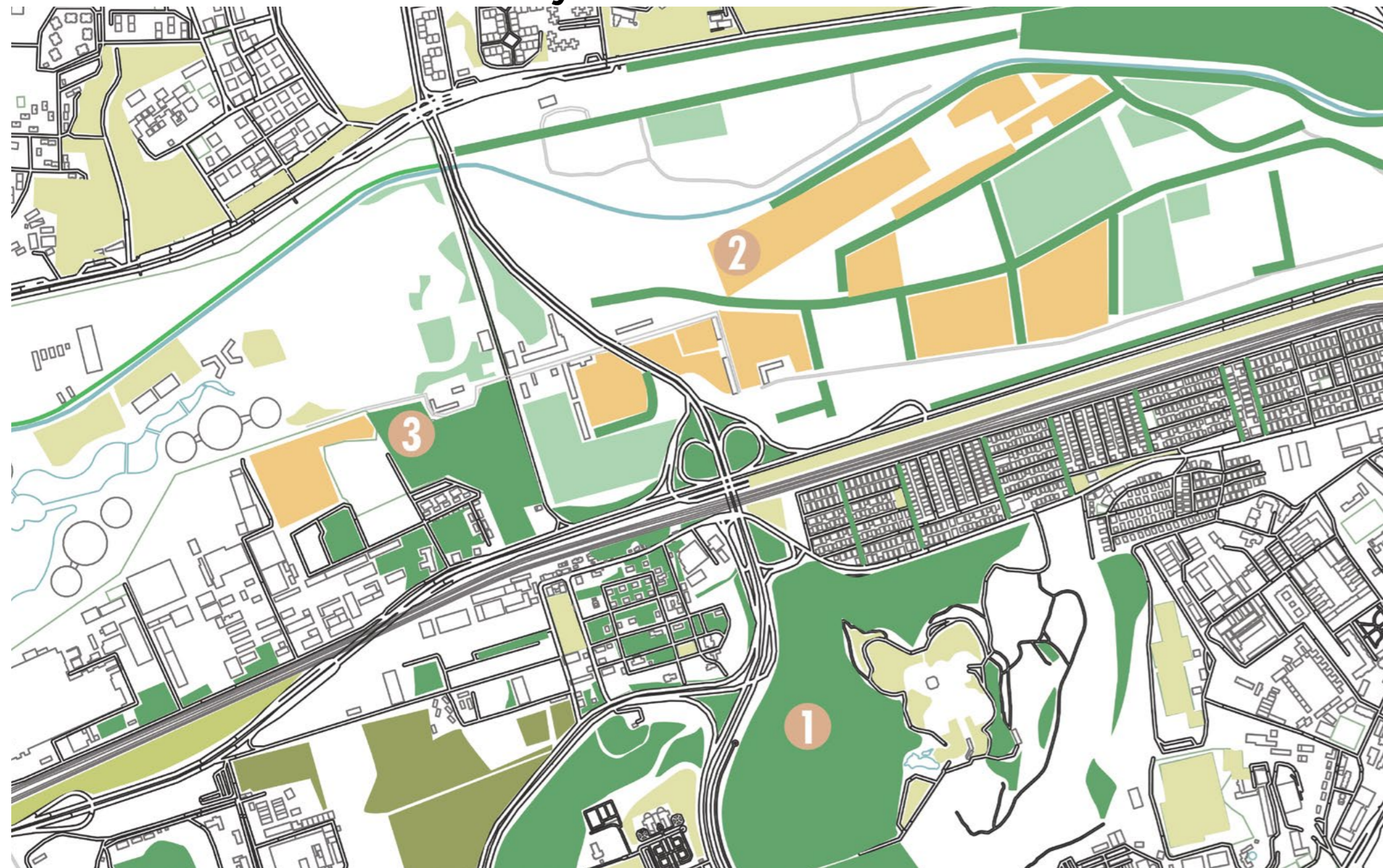


Taken from the website of Municipality of Ankara



Taken by Mustafa Taşkın

## Green Infrastructure Analysis



- Nursery Garden
- Orchards
- Greenery with Trees
- Cultivated Area
- Afforestation Area
- Park - Greenery
- 1 AOC Forests
- 2 AOC Farms
- 3 TIGEM Picnic Area
- Underutilized Lands
- To-be Enhanced Greens

Conclusion



Taken by Ahmet Soyak



Taken by Rabia Gürkan

## Land Use | Function Analysis



- Public Streets & Cafes & Commercials
- Education Facilities
- Residential Districts
- Government's Facility
- Factories
- Barriers
- Train Station
- Downtown Streets & Historical Buildings
- Historical Axes
- AOC Farms
- AOC Factories & Museum
- Atatürk's Villa Museum
- State Cemetery Park & Karadeniz Pool
- Presidential Complex
- Ankapark | Theme Park
- Historical Bridge
- Disconnection
- Unused Parts

Conclusion



Taken from Google Street View



Taken by Rabia Gürkan



## Buildings Use | Functions Analysis



- Conclusion**
- Public Buildings | In Use
  - Public Buildings | Not Used
  - Factories
  - Private Buildings | In Use
  - Improper Function
  - Residential
  - Unused Buildings | Proper for New Functions
  - Improperly Used Buildings - Re-functioning
  - Production Facilities

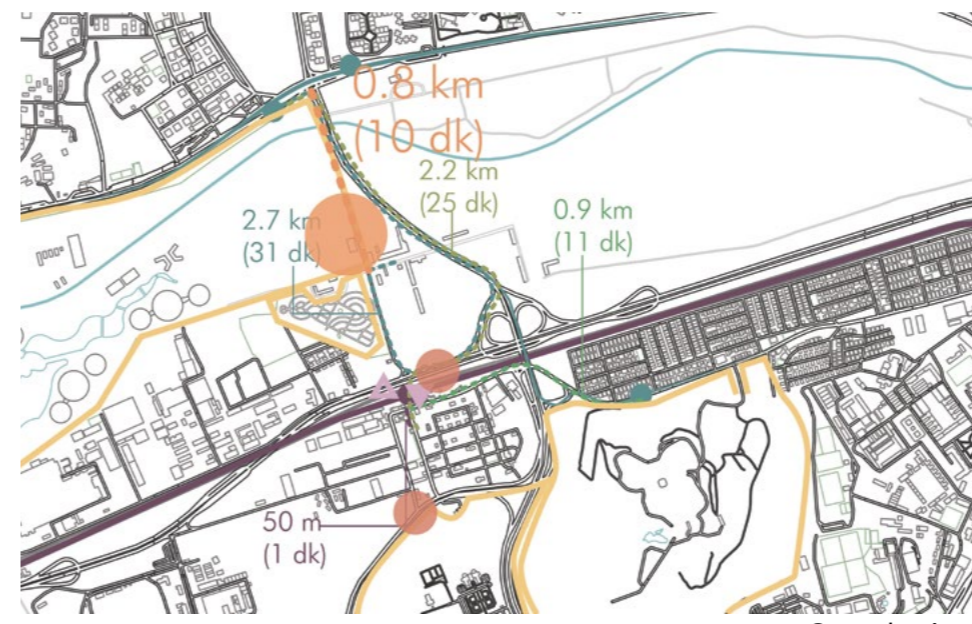
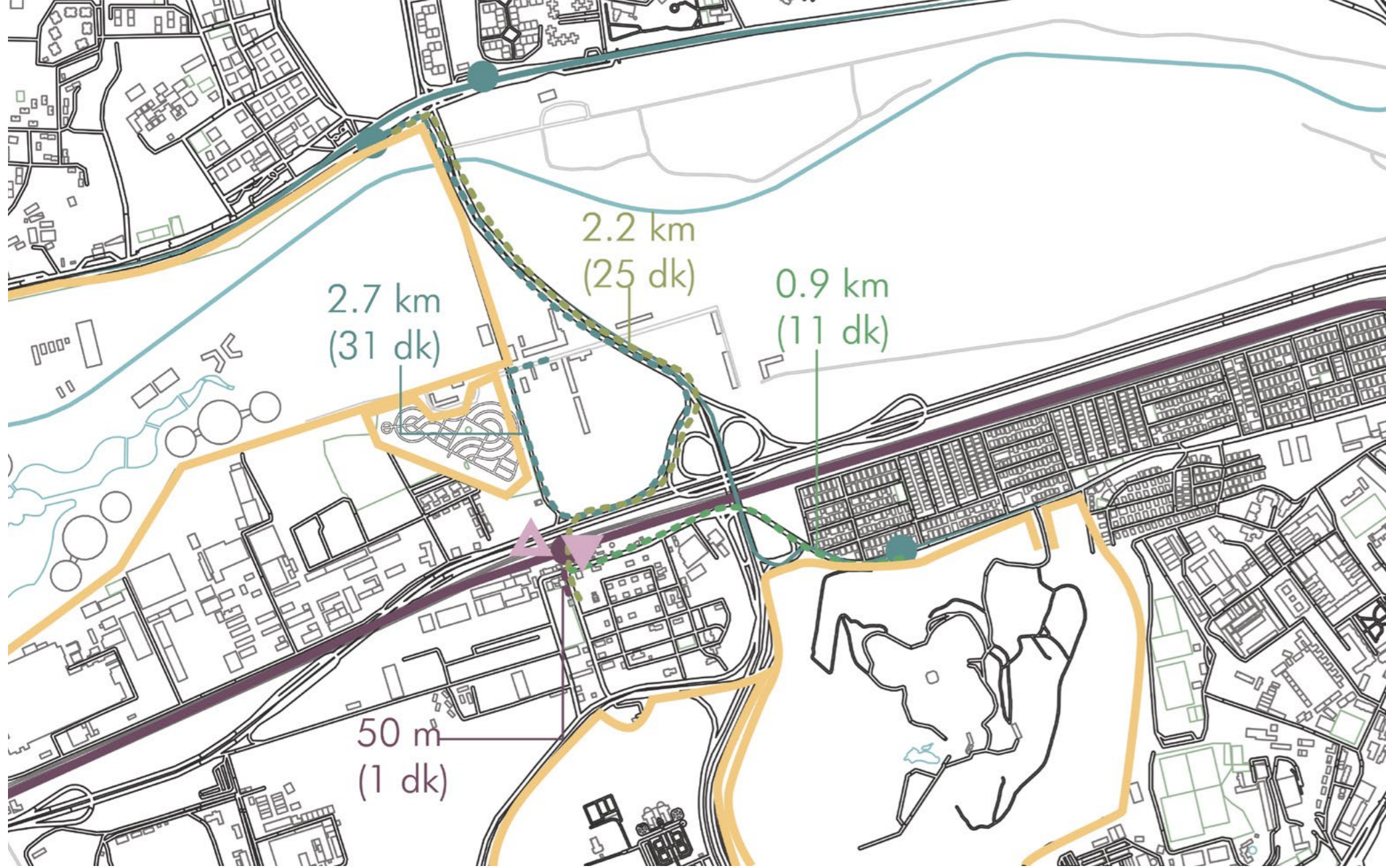


Taken from METU AOC Research Center



Taken from METU AOC Research Center

## Accessibility Analysis | Public Transportation



- Conclusion**
- Railways
  - Train Station - Gazi
  - Bus Route
  - Bus Stop
  - Overpass
  - Underpass
  - Not Accessible by Walking/Non-Public/Paid Access
  - Missing Public Connection Node by Bus
  - Missing - Better Walkable Connections



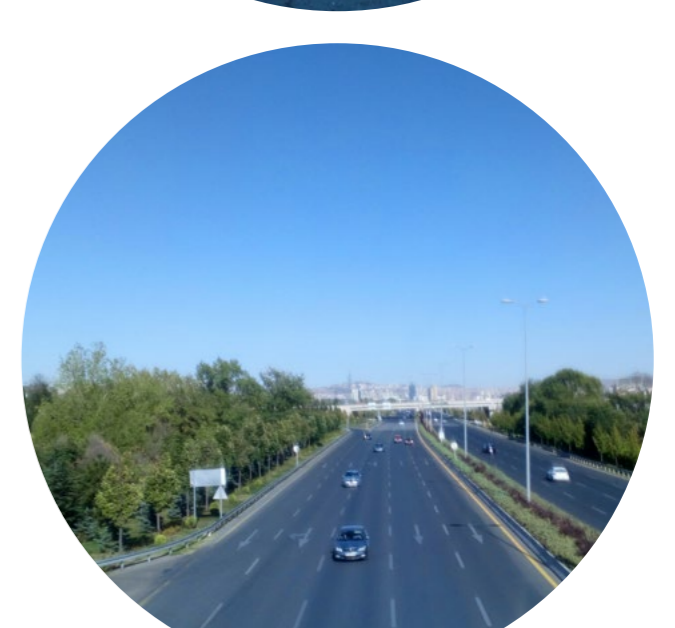
Taken from Google Street View



## Accessibility Analysis | Private Transportation



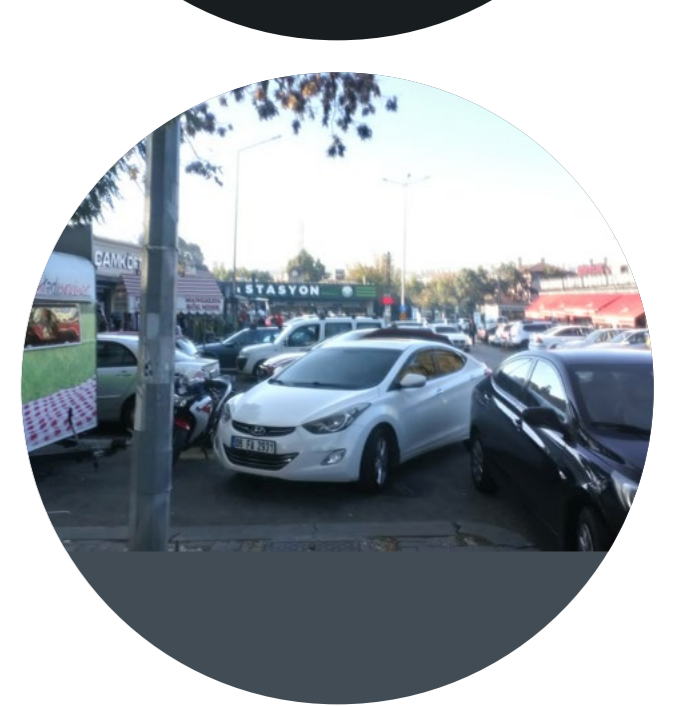
- Conclusion**
- Street-Edge Parking
  - Car Parking
  - Accessible but no Place to Park the Car
  - Car's Route
  - Non-Catchy Entrance to AOC Area
  - Parking Problem
  - Need for Foreshadow AOC



## Accessibility Analysis | Pedestrian Comfort | Quality of the Streets



- Conclusion**
- Not Open for Public
  - Highway & Wide Roads (Not Pedestrian Friendly)
  - Car Dominated Road (Not Preferable but Walkable)
  - No Cars but not Well Designed (Not preferable)
  - No Attraction (Pedestrian Friendly & Walkable)
  - Pedestrian-Friendly (More Comfortable)
  - 1 Downtown Streets & Historical Buildings
  - 2 Historical Axes
  - 3 AOC Farms' Paths
  - 4 AOC Factories & Museum
  - 5 Museum of Atatürk's Villa
  - 6 State Cemetery Memorial Park's Paths
  - 7 Non Public-Residential Complex
  - 8 Paid-Entry Theme Park



All the photos above are taken by Rabia Gürkan, unless stated otherwise





## Strengths

### Agriculture

- Social**
  - Existing brand AOÇ (recognition while selling the products)
- Economic**
  - Functioning factories for processing raw products

### Recreation

- Social**
  - Restaurants and night food culture
  - Some people love to use the area
- Spatial**
  - Green areas for public use

## Weaknesses

### Agriculture

- Economic**
  - Existing food chain, products are imported | Reliance to the agriculture of other cities or further districts
- Environmental**
  - Use of motor vehicles while importing products, CO<sup>2</sup> emission

### Recreation

- Social**
  - Facilities except for restaurants are not known by people
- Spatial**
  - Not easily accessible by public transportation
  - Misuse of the buildings (irrelevant corporations are using historic AOÇ buildings)
  - Unused buildings (like primary school)
- Environmental**
  - People use mostly only cars to reach the area - excessive CO<sub>2</sub> emission

## Opportunities

### Agriculture

- Social**
  - 3000 students in Faculty of Agriculture in Ankara - possible to bring related students here and help their education, mature better qualified people in the area of agriculture
- Environmental**
  - Fertile agricultural lands

### Recreation

- Social**
  - The ideology of the place
- Spatial**
  - Museums & green spaces

## Threats

### Agriculture

- Social**
  - Production in the city is not encouraged
- Spatial**
  - Constructions on the agricultural lands

### Recreation

- Social**
  - Non-public occupying facilities affect the perception of the AOÇ in people's mind negatively
- Spatial**
  - The highways surrounding the area
  - Non-public complexes next to the downtown - limited access to the area

## Strategy Diagrams



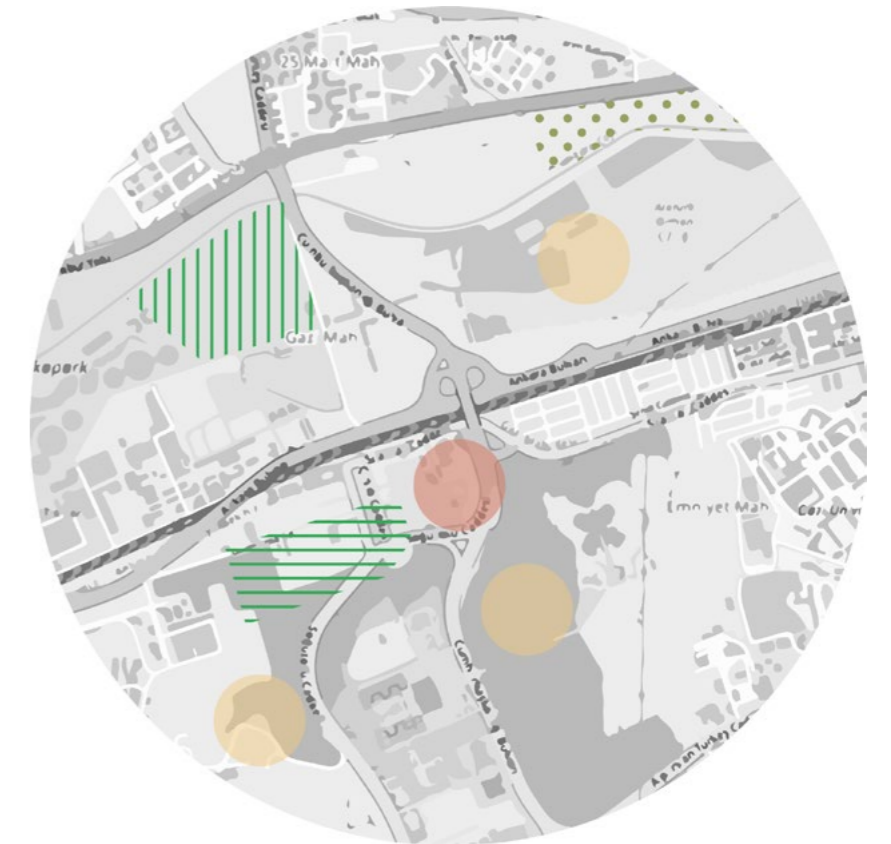
Re-function Marmara & Karadeniz Pools  
Re-treatment of the river

Cleaning the river  
Riparian buffer to keep it clean and protected  
Use underground canals to irrigate the lands



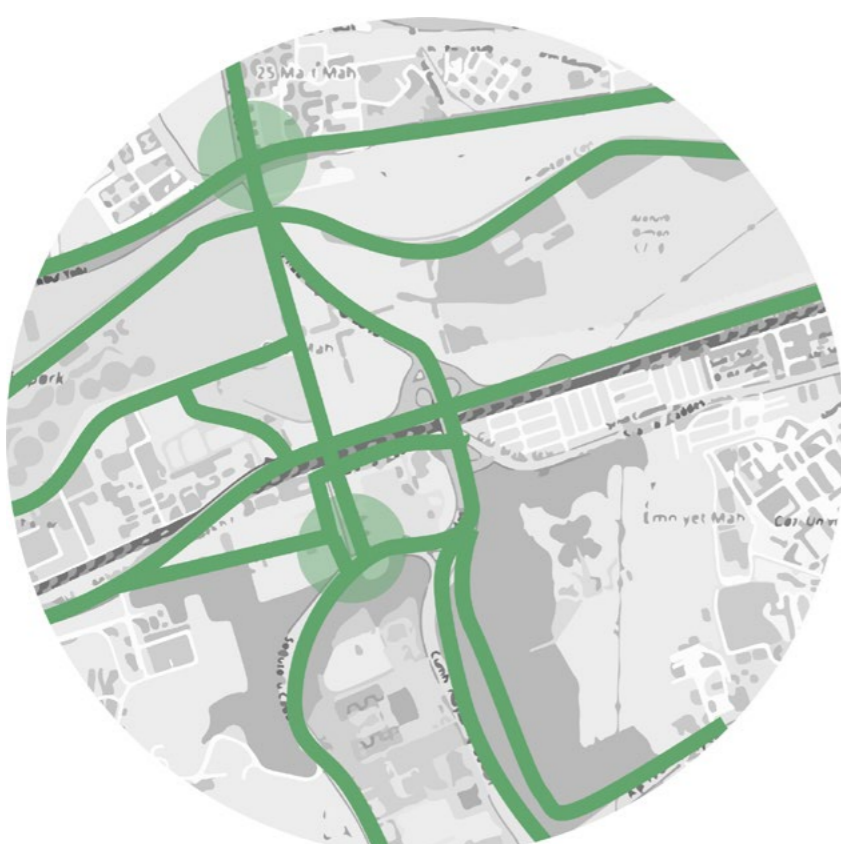
Use the greeneries effectively  
Increase the productivity and yield of the lands

Noise and air pollution barrier  
Silvopasture - introduce breeding animals to the fields  
Forest farming - introduce companion vegetation to the forests to have short-term non-timber products



Evaluate the empty lands | add more functions  
Raise the awareness  
Add activities to make people spend time in AOÇ and develop a connection to the heritage values

Hobby garden  
Botanic garden  
Healing garden  
Paths in the forests and agriculture fields



Make the area pedestrian-friendly  
Remove the restrictions in the area

Slow the traffic around the downtown  
New public squares  
(overpass square on the historic axes, connection square near historic bridge)  
Paths in the forests and agriculture lands



Introduce sustainable and convenient transportation method

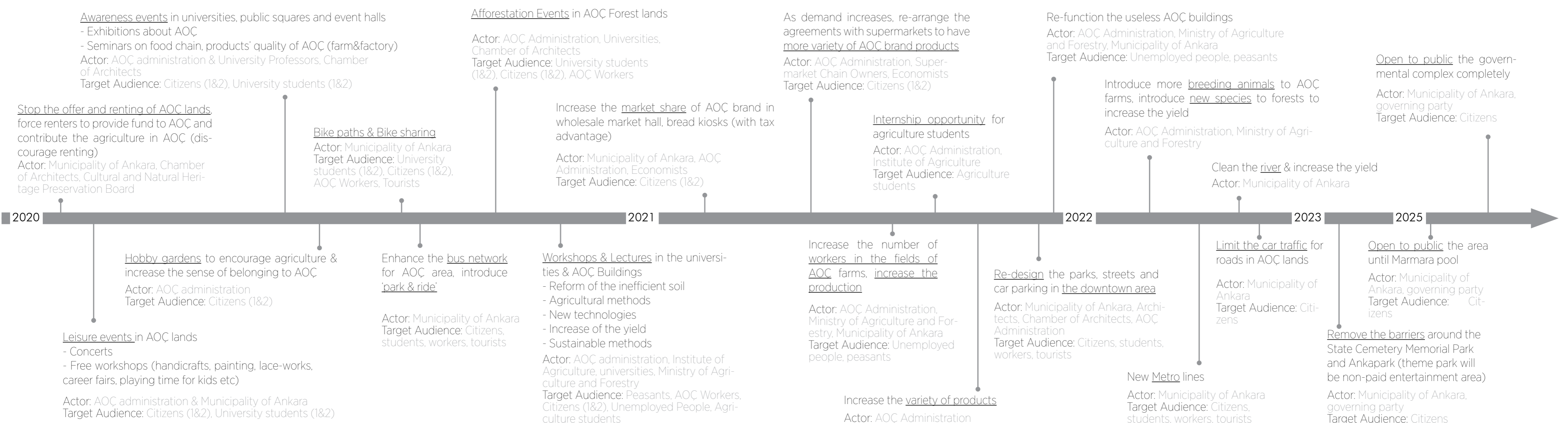
Bike paths along the roads  
Bike sharing system  
Improve the street sections

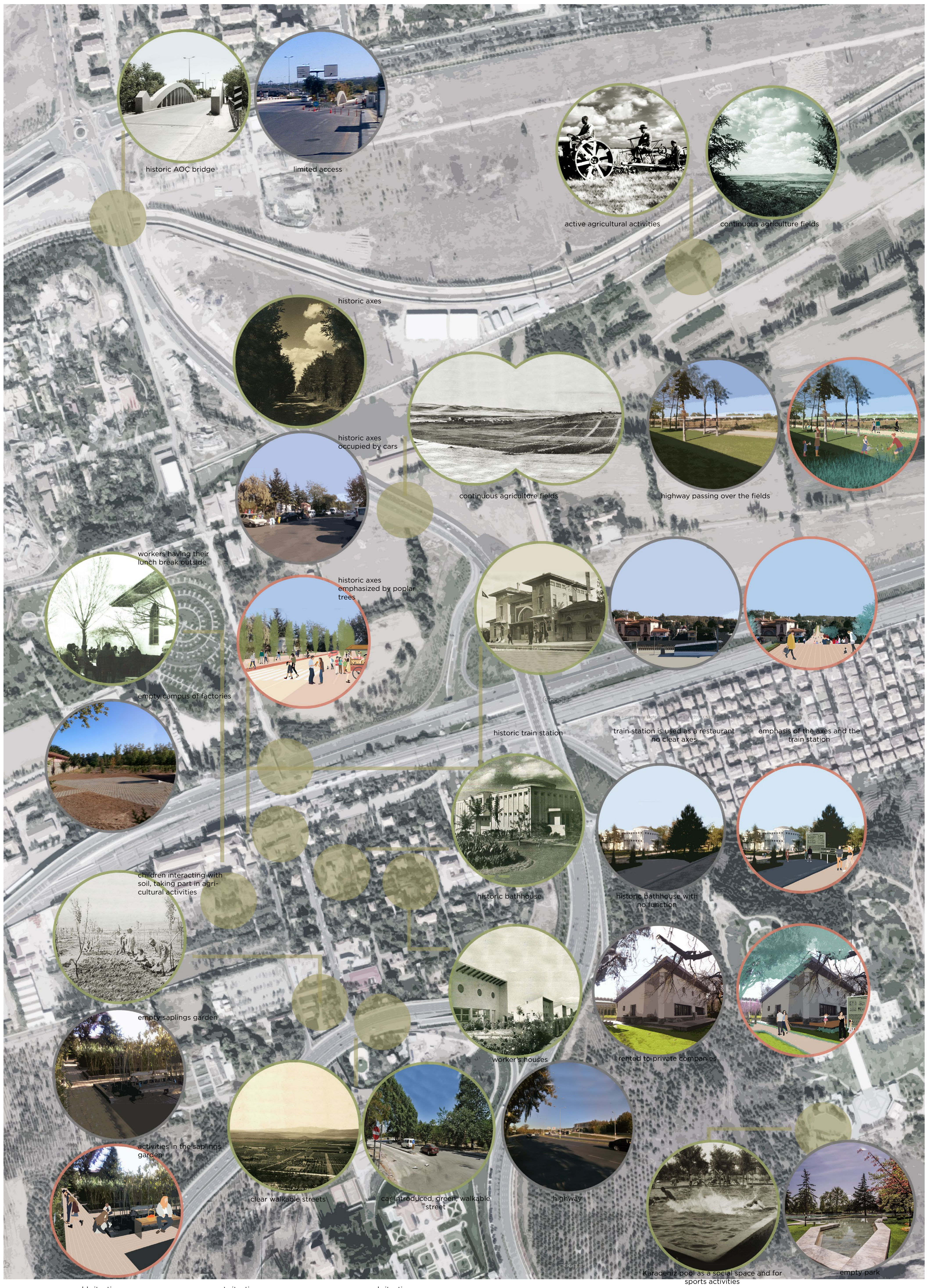


Improve the accessibility of AOÇ downtown

New bus stops and direct connection to downtown from different districts of the city  
Bike sharing in the bus stops  
Remove the restrictions make the area completely public

## Phases and Participating Actors of the Project





— old situation   
 — present situation   
 — proposed situation



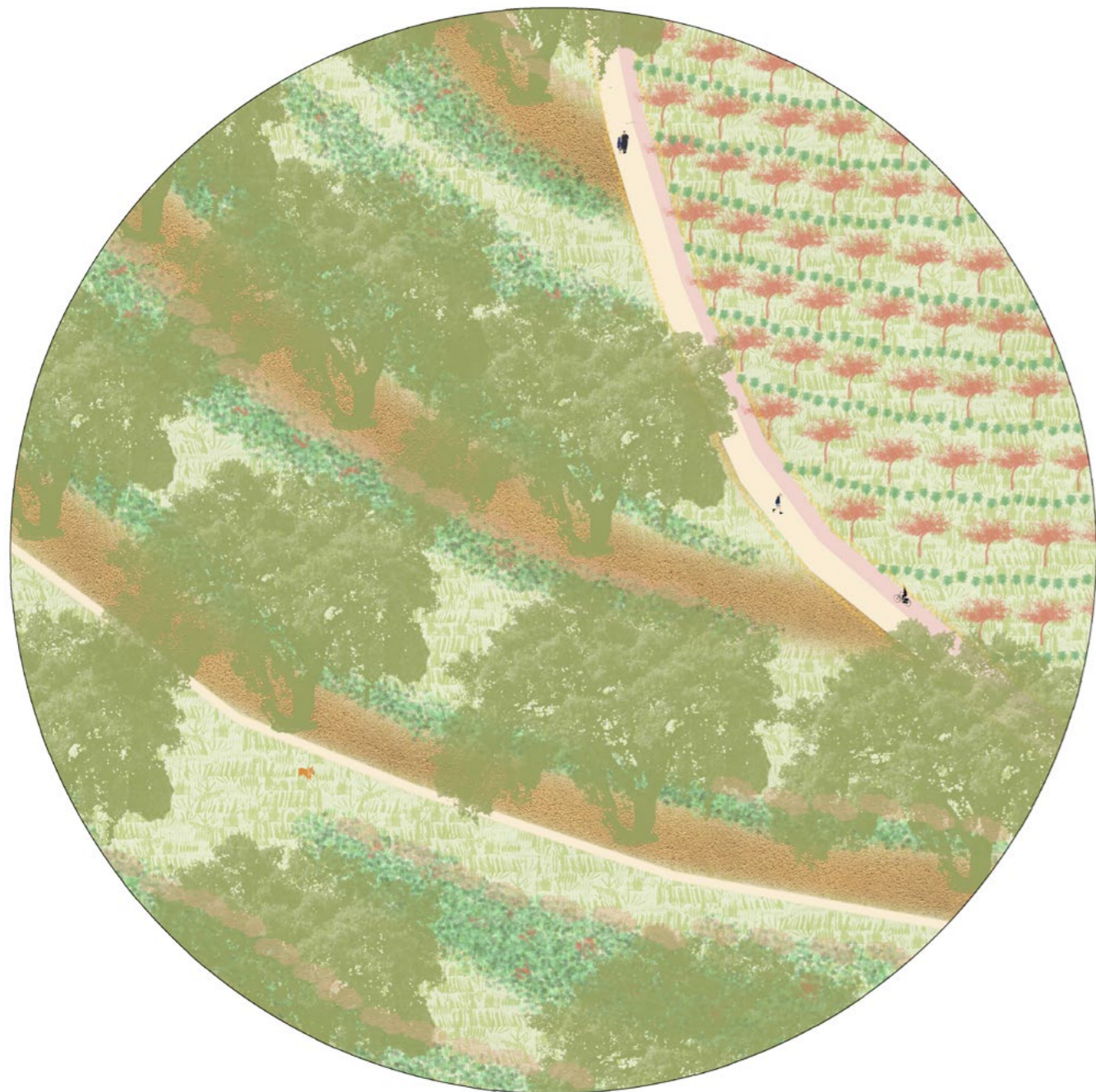




- |                    |                               |                       |              |                        |
|--------------------|-------------------------------|-----------------------|--------------|------------------------|
| 1. Poplar          | 7. Cedar                      | 13. Shiitake mushroom | 19. Mint     | 25. Chamomila          |
| 2. Oak             | 8. White mulberry             | 14. Ginseng           | 20. Thyme    | 26. Lavender           |
| 3. Larch           | 9. Linden                     | 15. Wisteria          | 21. Ginger   | 27. Decorative flowers |
| 4. Horse chestnut  | 10. Russian olive             | 16. Forsythia         | 22. Garlic   |                        |
| 5. Goldenrain tree | 11. Maple                     | 17. Rose              | 23. Rosemary |                        |
| 6. Crab apple      | 12. Cornelian cherry dog-wood | 18. Basil             | 24. Marigold |                        |

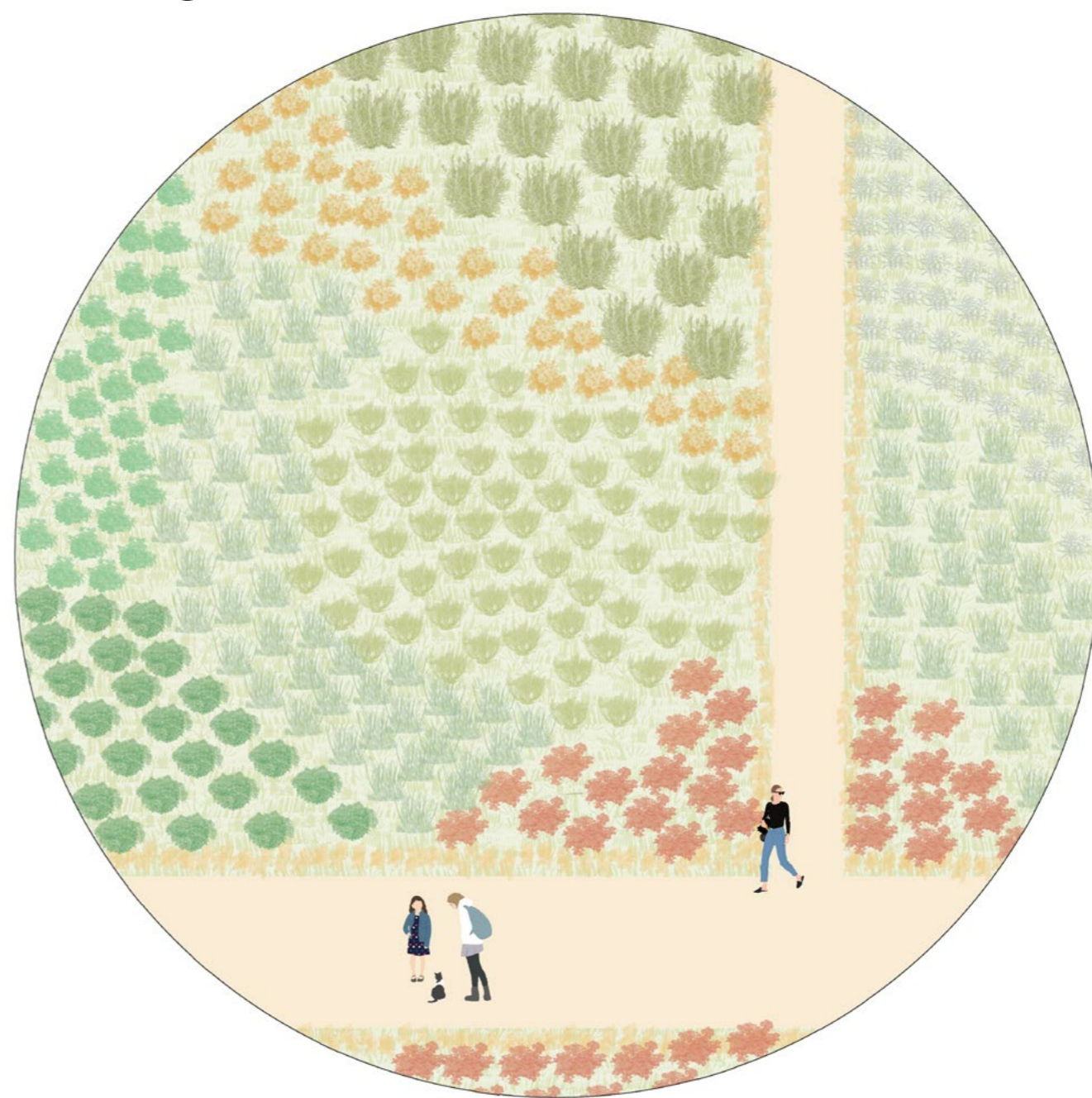


**Productive Forest**



- |  |                    |
|--|--------------------|
|  | Oak tree           |
|  | Cherry plum        |
|  | Shiitake mushrooms |
|  | Marigold           |
|  | Ginseng            |

**Healing Garden**

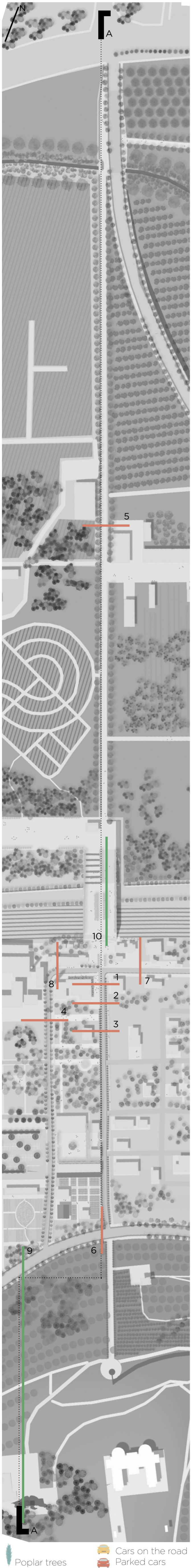


- |  |          |
|--|----------|
|  | Daisy    |
|  | Basil    |
|  | Mint     |
|  | Thyme    |
|  | Garlic   |
|  | Rose     |
|  | Rosemary |
|  | Ginger   |
|  | Marigold |





Site Section AA



Existing Atmosphere | Restaurants



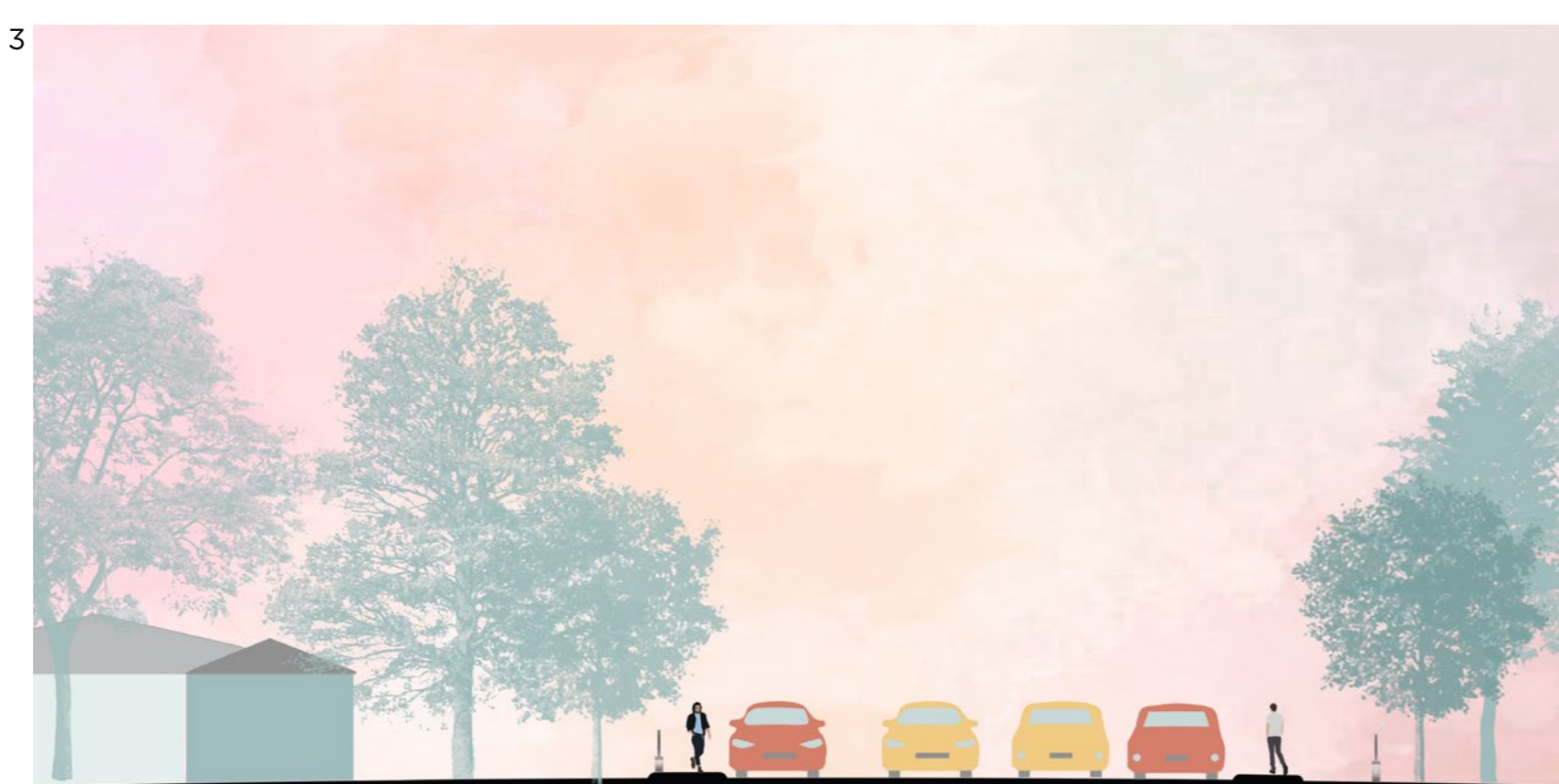
Proposed Atmosphere | Restaurants



Existing Atmosphere | Entrance of the park



Proposed Atmosphere | Entrance of the park



Existing Atmosphere | Entrance of the park



Proposed Atmosphere | Entrance of the park



Existing Atmosphere | Between the mosque and old brewy



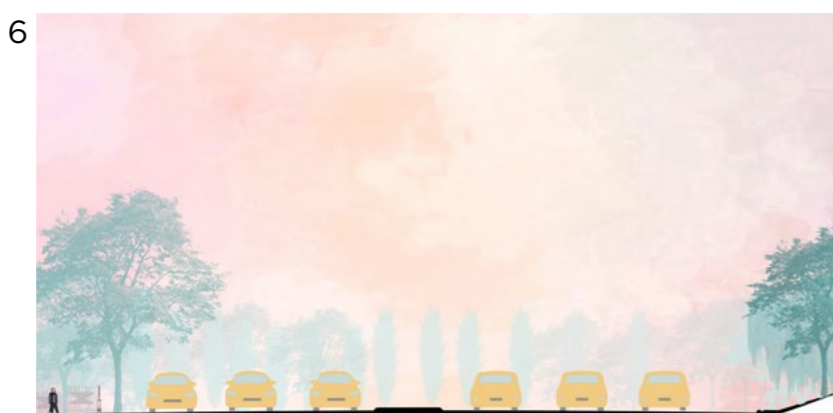
Proposed Atmosphere | Between the mosque and old brewy



Existing Atmosphere | Axes near factories



Proposed Atmosphere | Axes near factories



Existing Atmosphere | Road between the downtown and presidential palace's hill



Proposed Atmosphere | Road between the downtown and presidential palace's hill



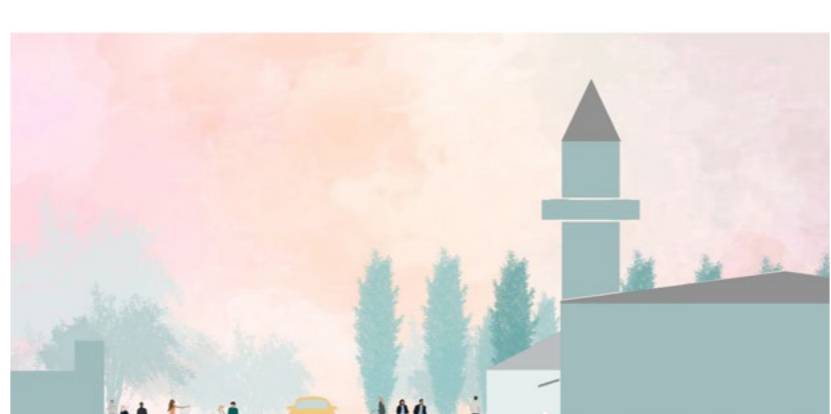
Existing Atmosphere | Exit of the train station



Proposed Atmosphere | Exit of the train station



Existing Atmosphere | Between the mosque and restaurants



Proposed Atmosphere | Between the mosque and restaurants



Better connection with the forest | no limits



Better connection between the agriculture lands and the downtown | overpass square

