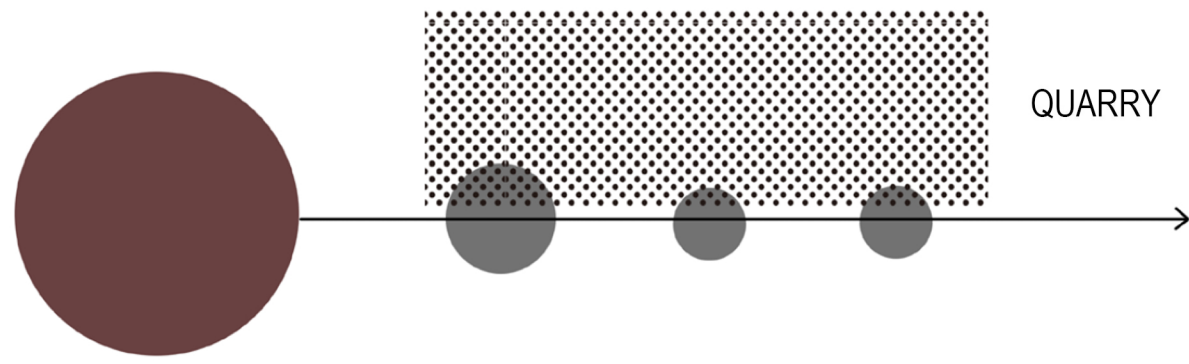
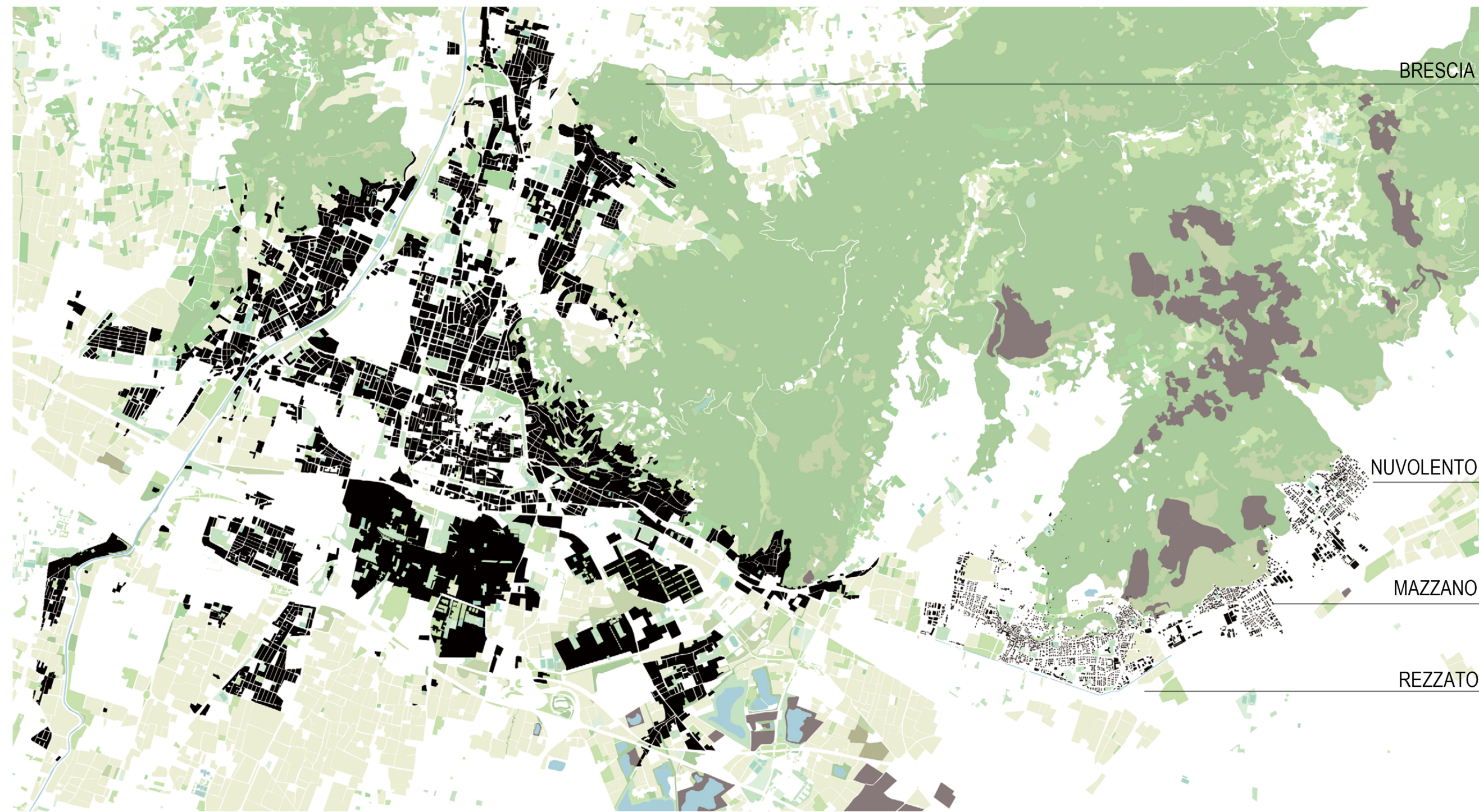


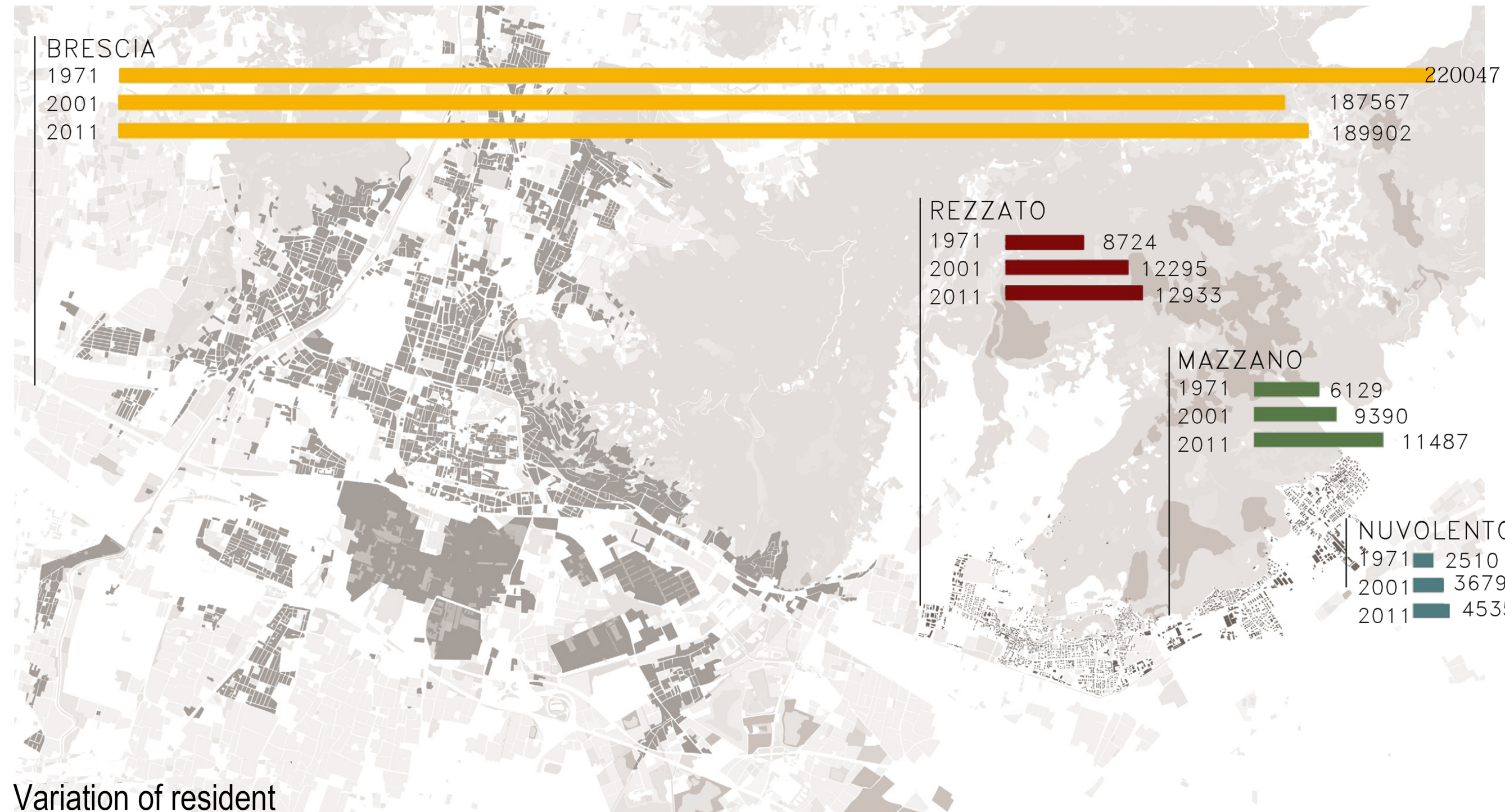
# RELATION TO BRESCIA

## Urbanization

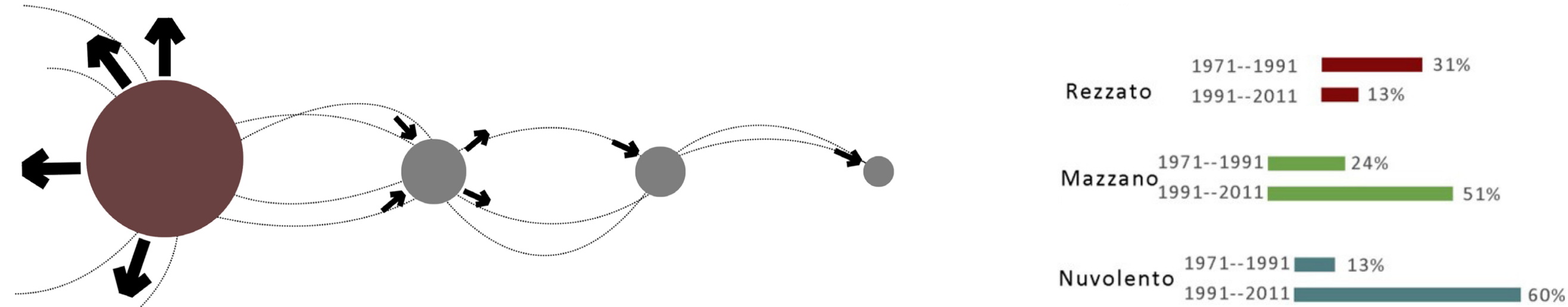


The site is connected with 3 cities, Rezzato, Mazzano and Nuvoletto. They are on the east-extension of Brescia. According to urbanisation analysis, we could see that the quarries are link between those cities.

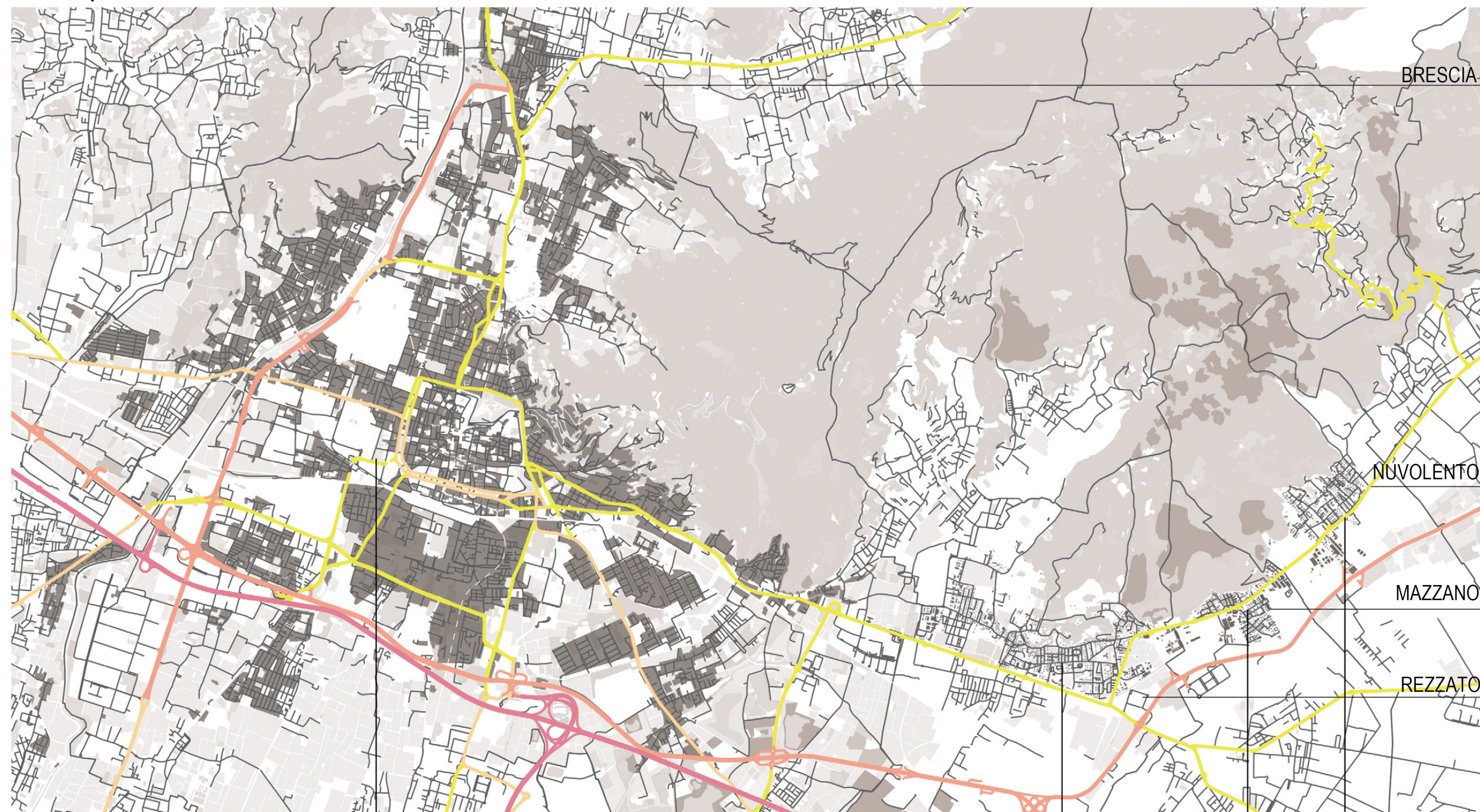
## Population



## Variation of resident



## Transportation



## S.W.O.T Analysis

### Strengths

- The site is located next to the main road and the traffic is convenient.
- The site has a rich history of marble culture and minerals, and there is also an existing handicraft school.
- Rich in natural resources, varied and unique landforms.

### Opportunities

- Have the support of The Consorzio Marmisti Bresciani was formed in the 1990s in order to promote the quality of materials and skills of its associates, and to assist them in the course of their activities. In addition, the Consortium aims to protect and increase public awareness of the historical and cultural heritage of stone from Brescia.
- A potential member of Italy Travel Network, near to Brescia which has 2 Unesco Sites.
- Have both human and natural resources.

### Weakness

- Urban and natural textures are single, urban and natural cutting is hard, lacking buffer area.
- The venue lacks tourist attractions and entertainment facilities, and lacks attractiveness to the outside world.
- Lack of urban infrastructure

### Threats

- Existing industrial zones and mines have a negative impact on the environment
- There are similar attractions around, which will separate the attention of tourists.
- The government does not pay enough attention to the existing human history of the site.



## Design aim

