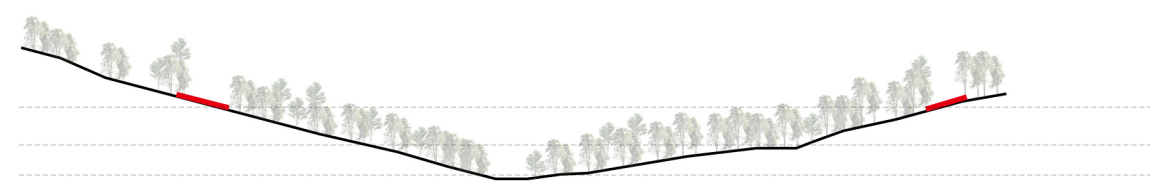


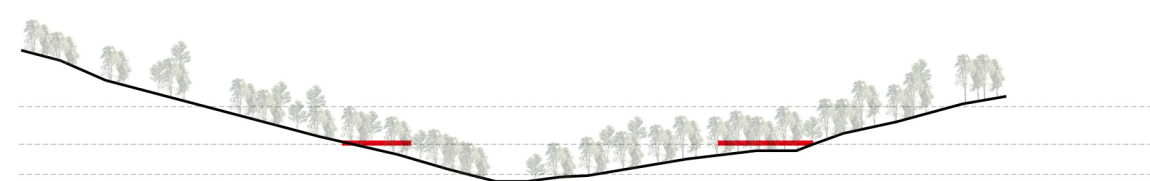
AREA 2 - BRIDGE IN BRIDGE 1:2000



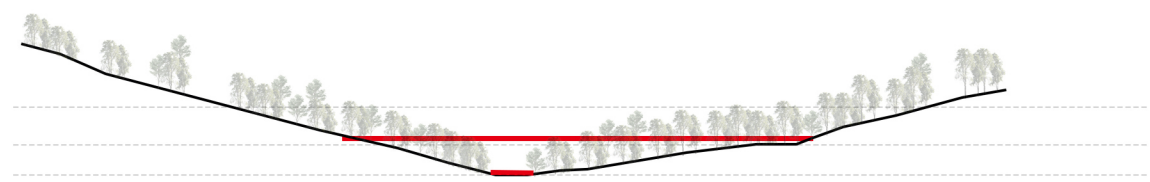
- Legend
- Existing road
 - █ Existing building
 - Design bicycle route



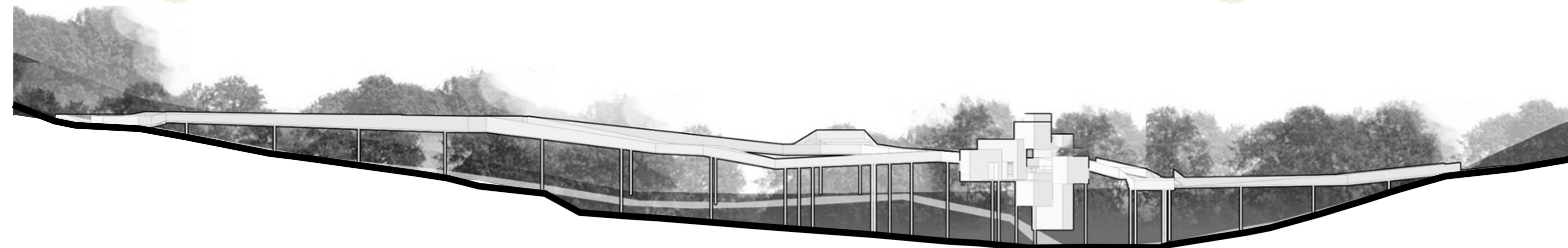
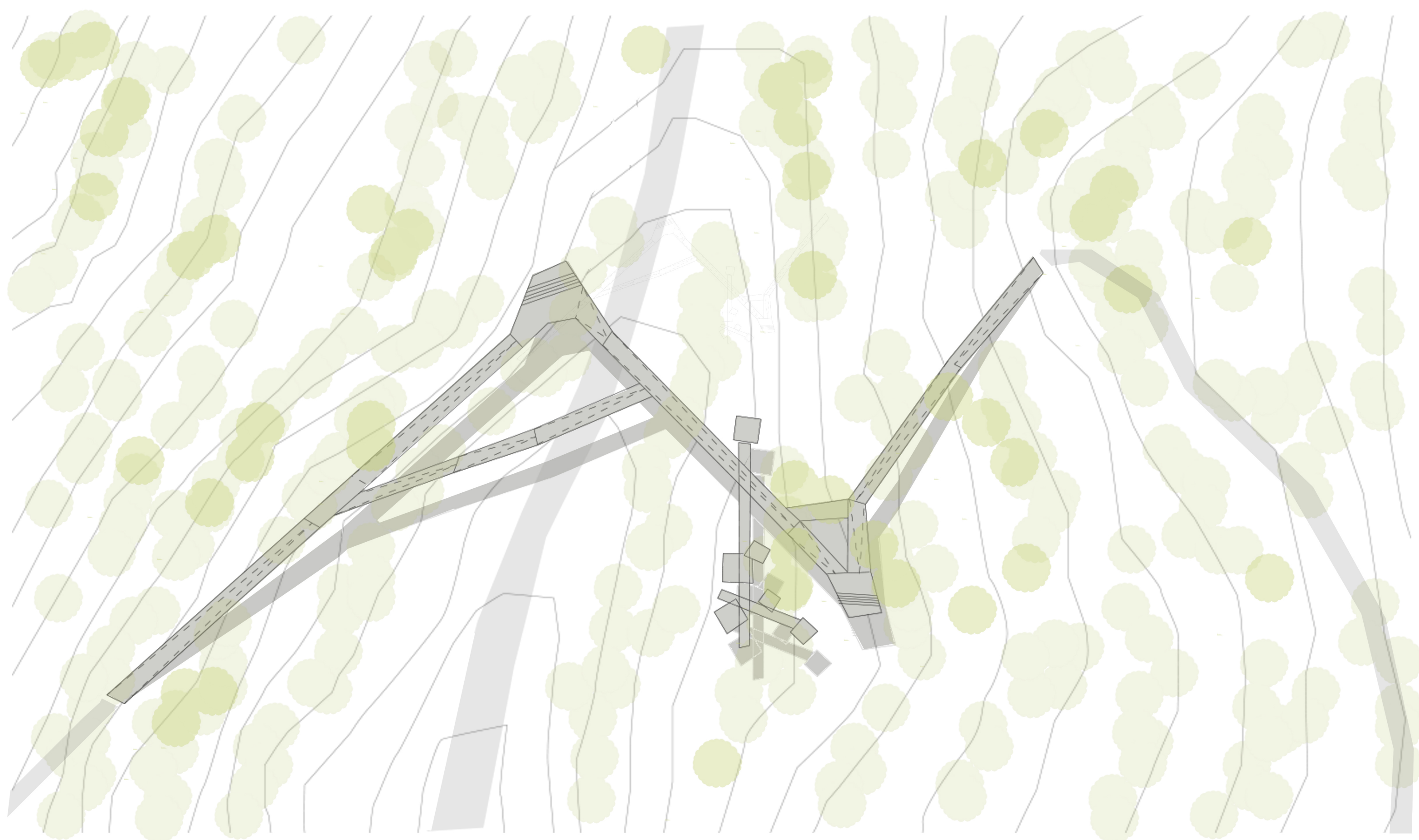
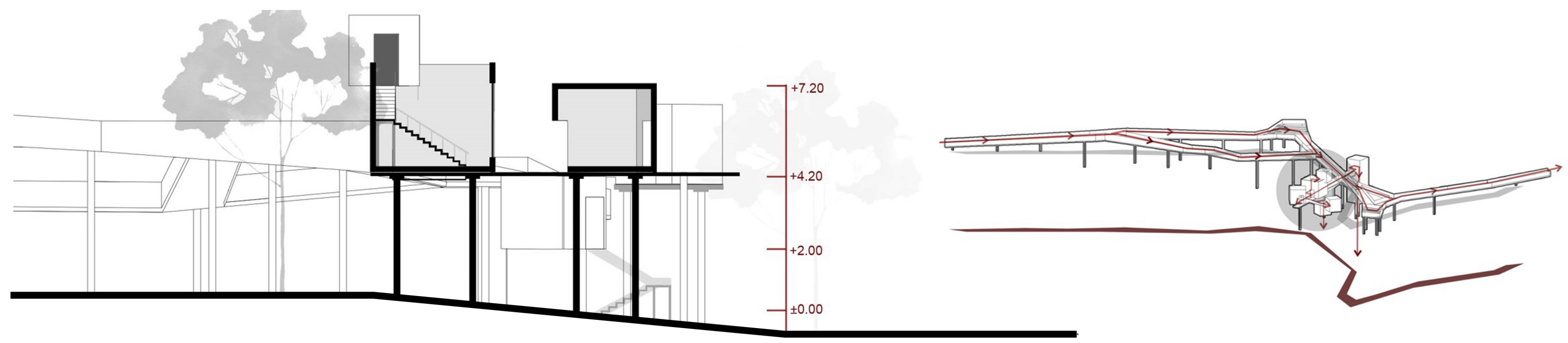
To enjoy the varieties of changing levels
the path is designed at the same level of ground



To enjoy the varieties of local trees
the path is designed at the same heights of trees



To enjoy the varieties of forest view
the bridge is designed on the top of trees



1. Existing topography
2. Creating path through forest.
3. Avoiding the existing car route.
3. Elevating the bridge cross the existing car route.
5. Adjusting the angle to adapt to the terrain, to have more views.
6. Connecting the design path to bridge.

