

AREA 3 VIEWING PLATFORM 1: 2000

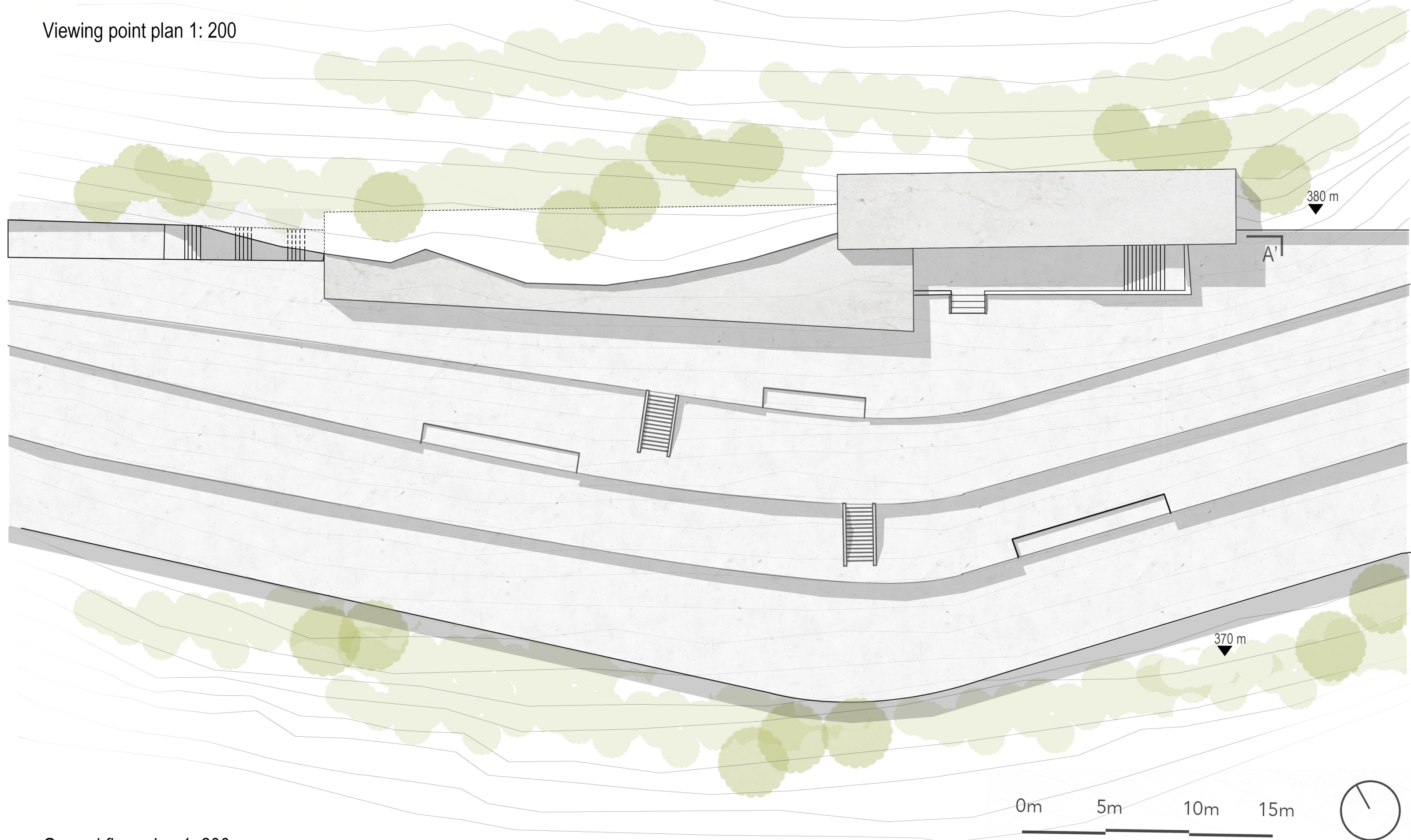


Viewing point plan 1: 200

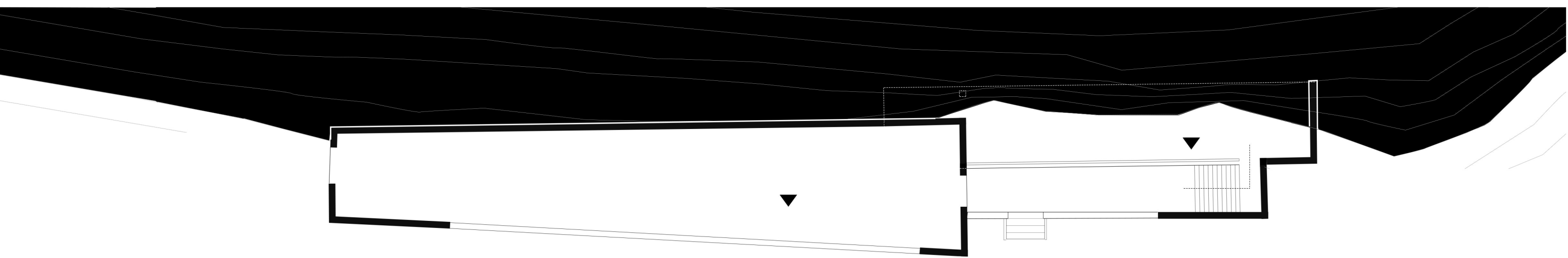
Upper platform construction is connected with flat ground. It is used to do sightseeing and take a rest.

For the lower part of platform construction, we dig inside of the rock in order to allow visitors to touch the quarry and have a closer connection with the site.

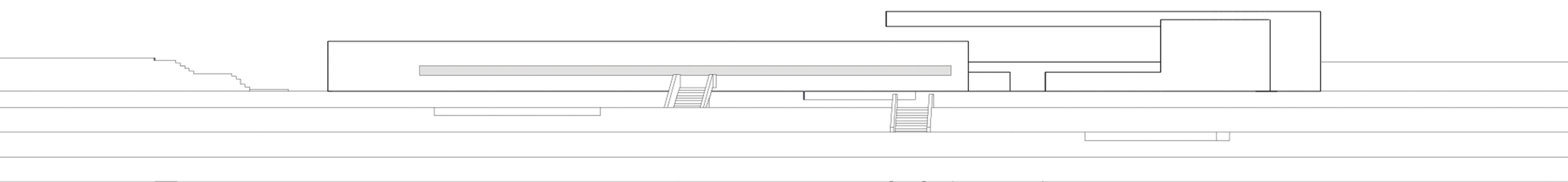
To rich the visiting experience of visitors, we set the stairs along the texture of quarry. Visitors could sit on 360 m-high mountain to let their feet off the ground and enjoy the scenery..



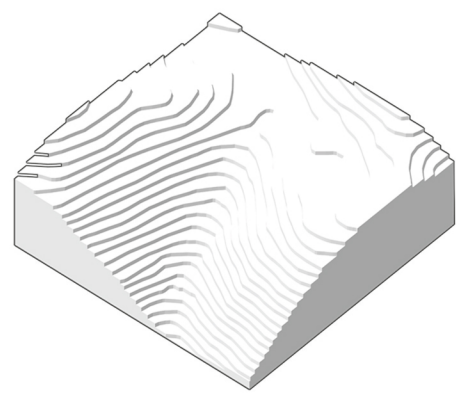
Ground floor plan 1: 200



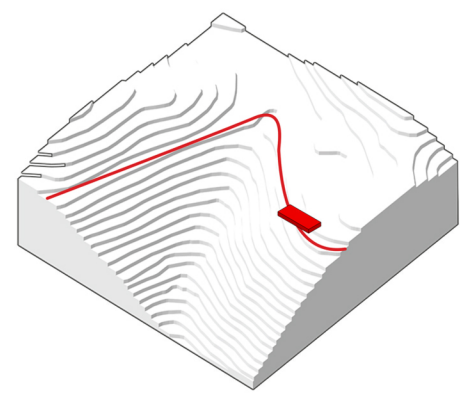
Elevator 1: 200



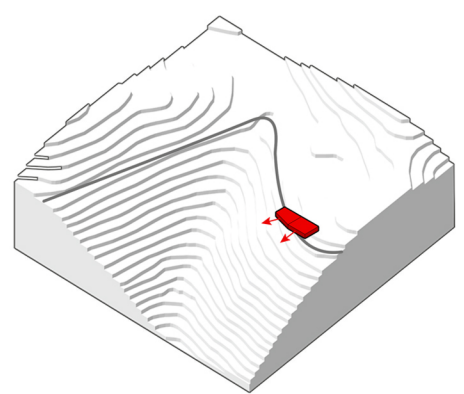
Section A-A' 1:200



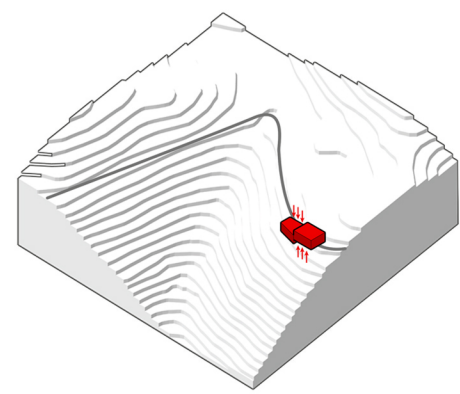
1.Existing topography



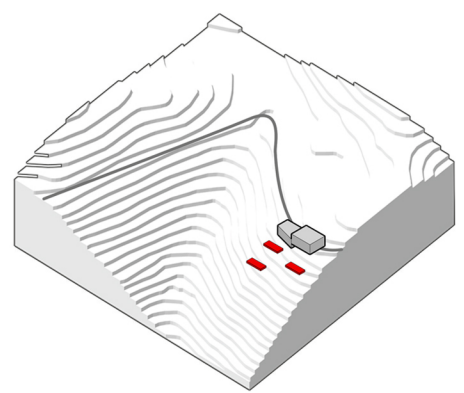
2.Connecting the path and placing platform



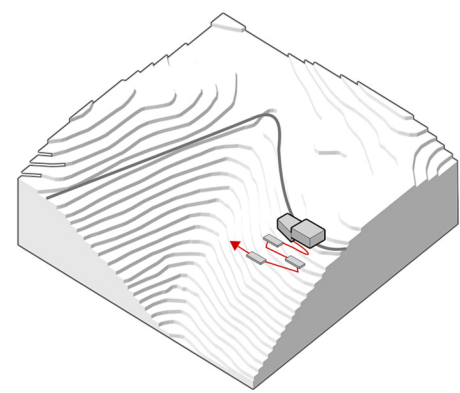
3.Twisting the platform according to the view and terrain.



4.Creating height difference to adjust the landform.



5.Setting small platform to rich the point.



6.Creating connection between main and small platform.

