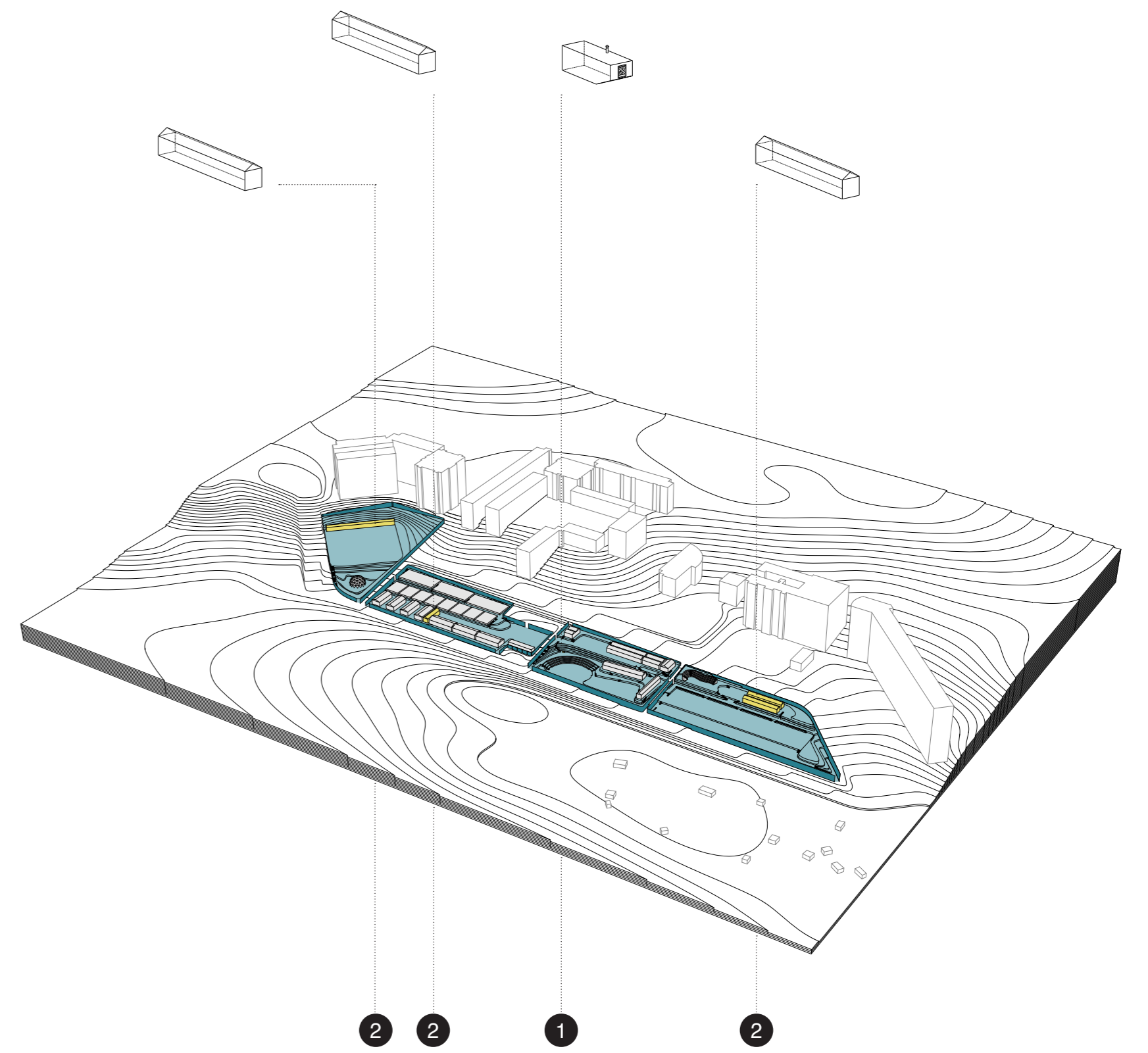
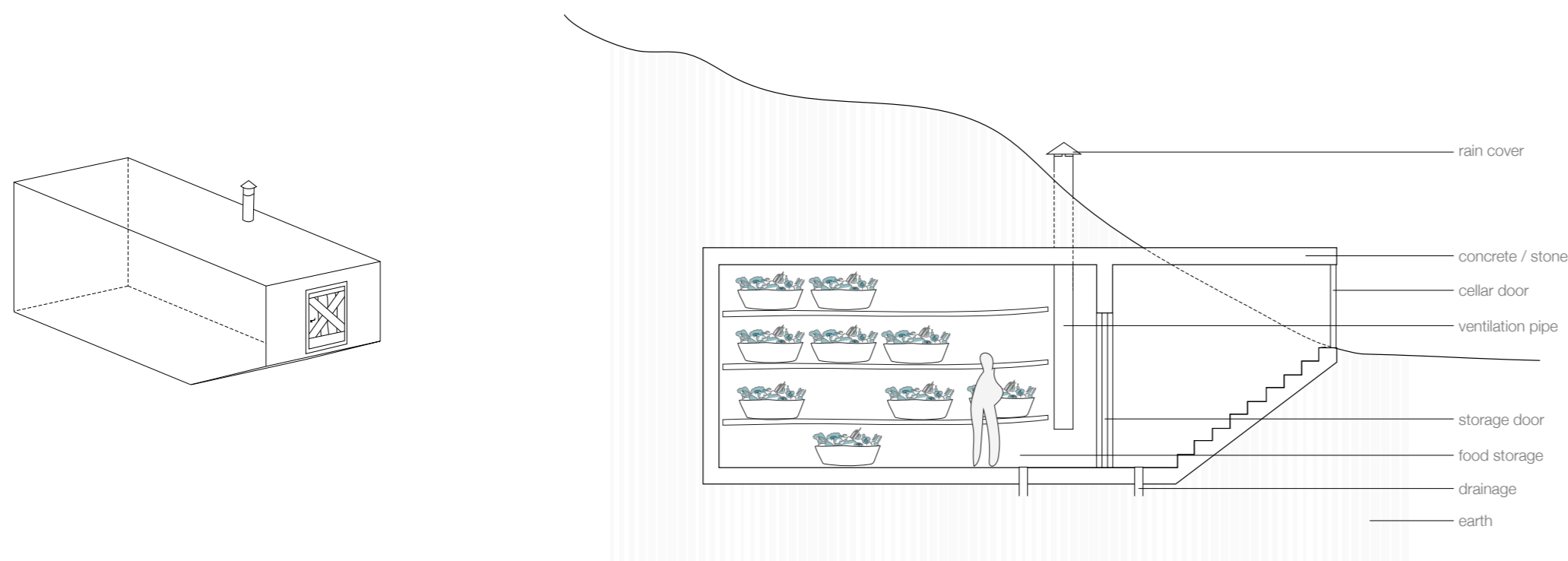


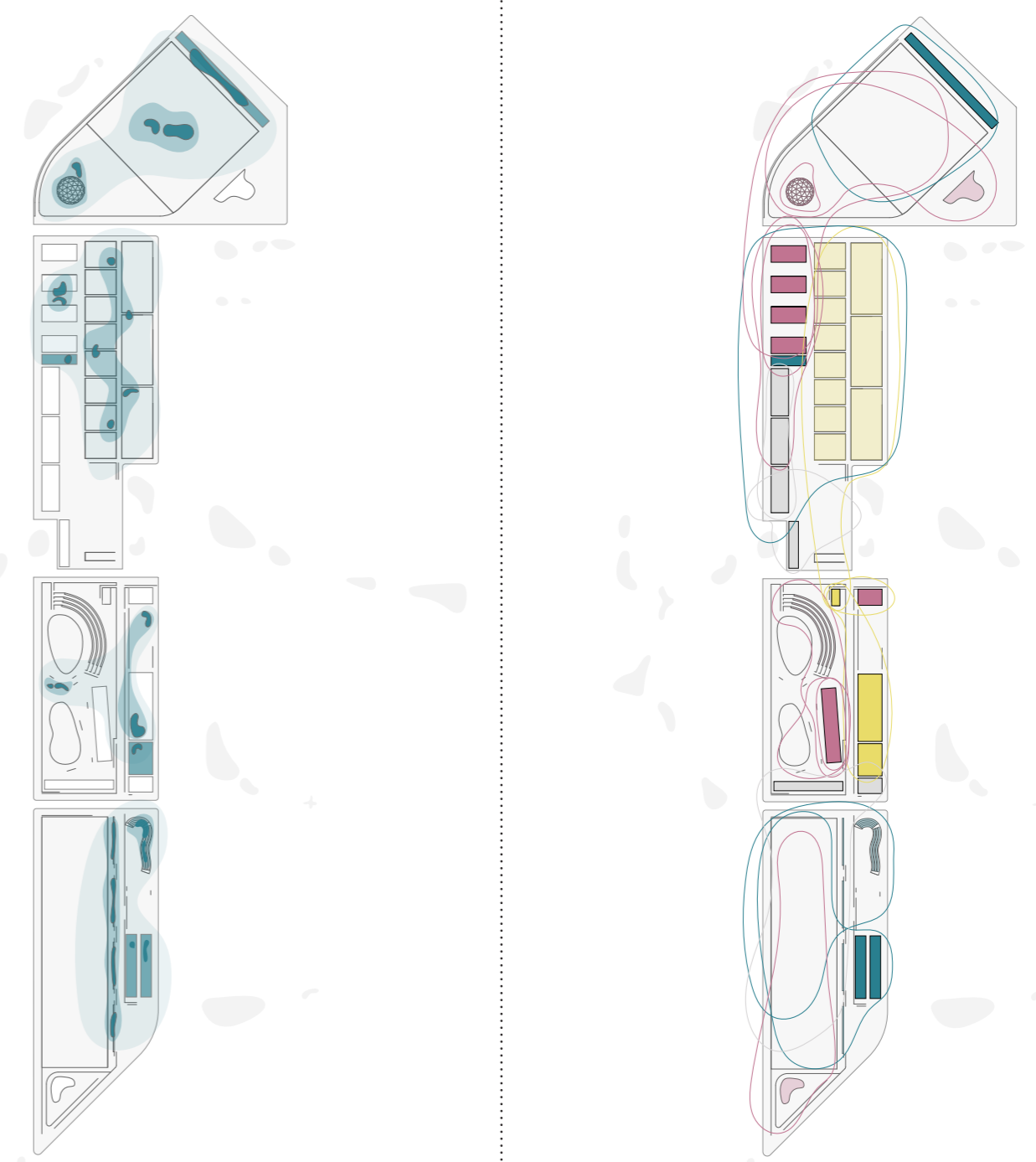
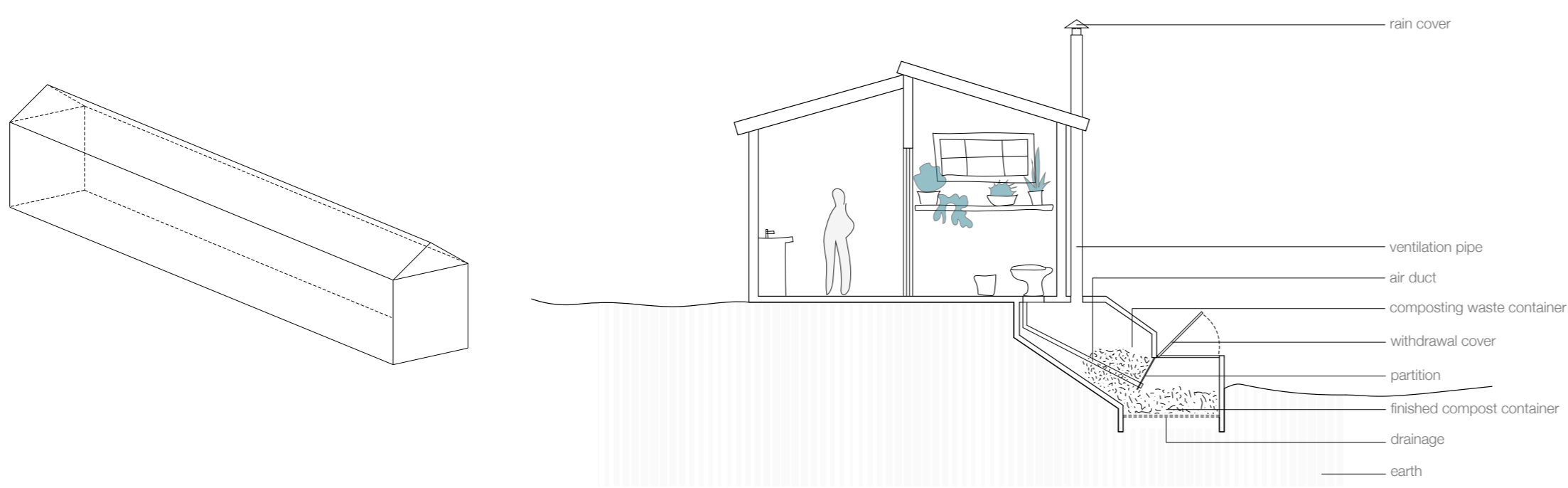
1 ROOT CELLAR

A root cellar is any storage location that uses the natural cooling, insulating, and humidifying properties of the earth. They are typically used by farmers and gardeners to store raw and pickled vegetables. It can also store canned and preserved food. To work properly, a root cellar must be able to hold a temperature of 0° to 4.5°C and a humidity level of 85 to 95 percent.



2 DRY COMPOSTING TOILETS

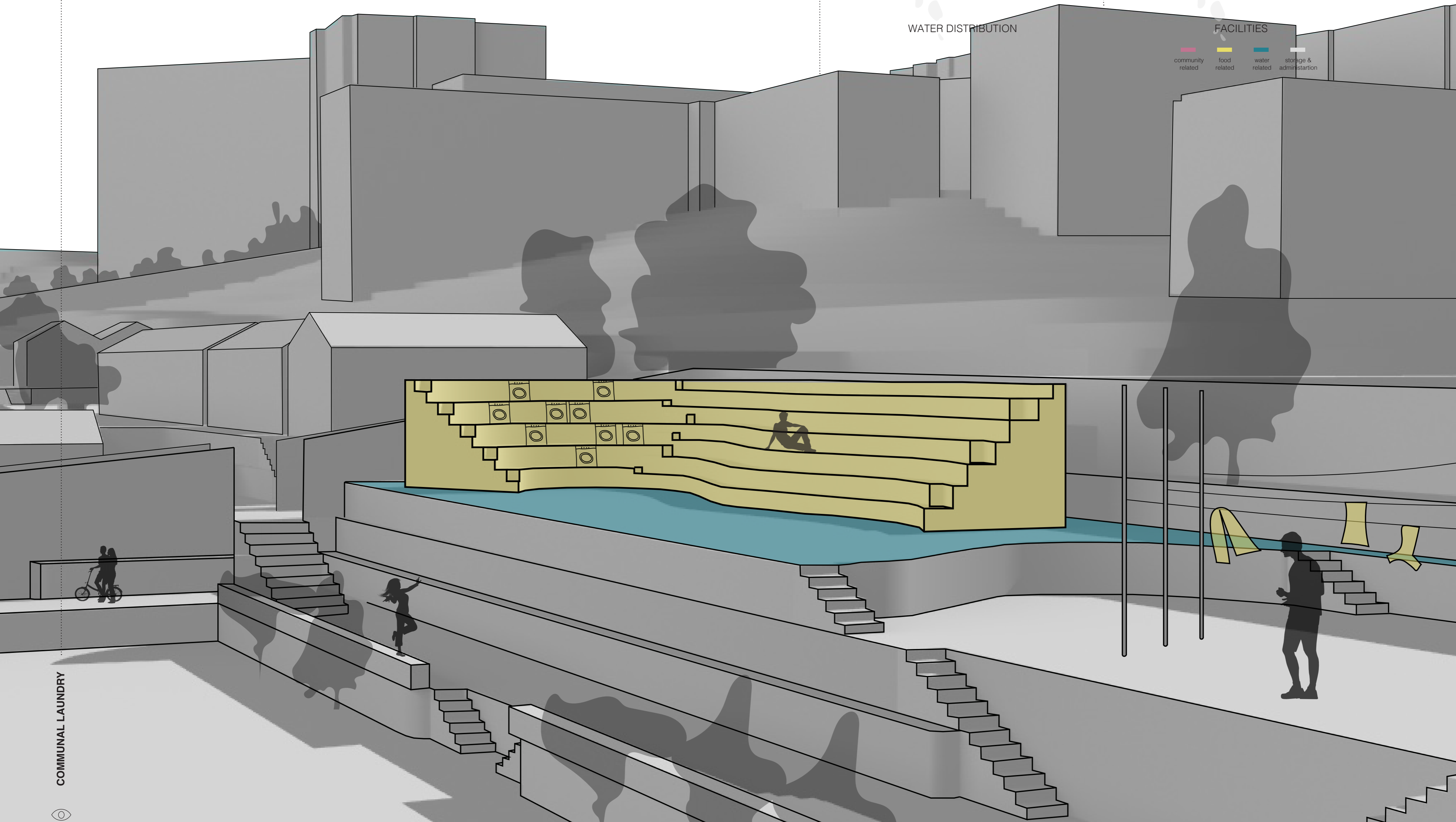
A composting toilet is a type of dry toilet that treats human excreta by the biological process of composting. Composting is carried out by microorganisms (mainly bacteria and fungi) under controlled aerobic conditions. Dry composting toilets use no water for flushing. This process leads to the decomposition of organic matter which when mixed with organic kitchen waste can slowly turn into organic fertilizer for agricultural purposes such as vegetable, herb and flower gardens.



WATER DISTRIBUTION

FACILITIES

- community related
- food related
- water related
- storage & administration



COMMUNAL LAUNDRY