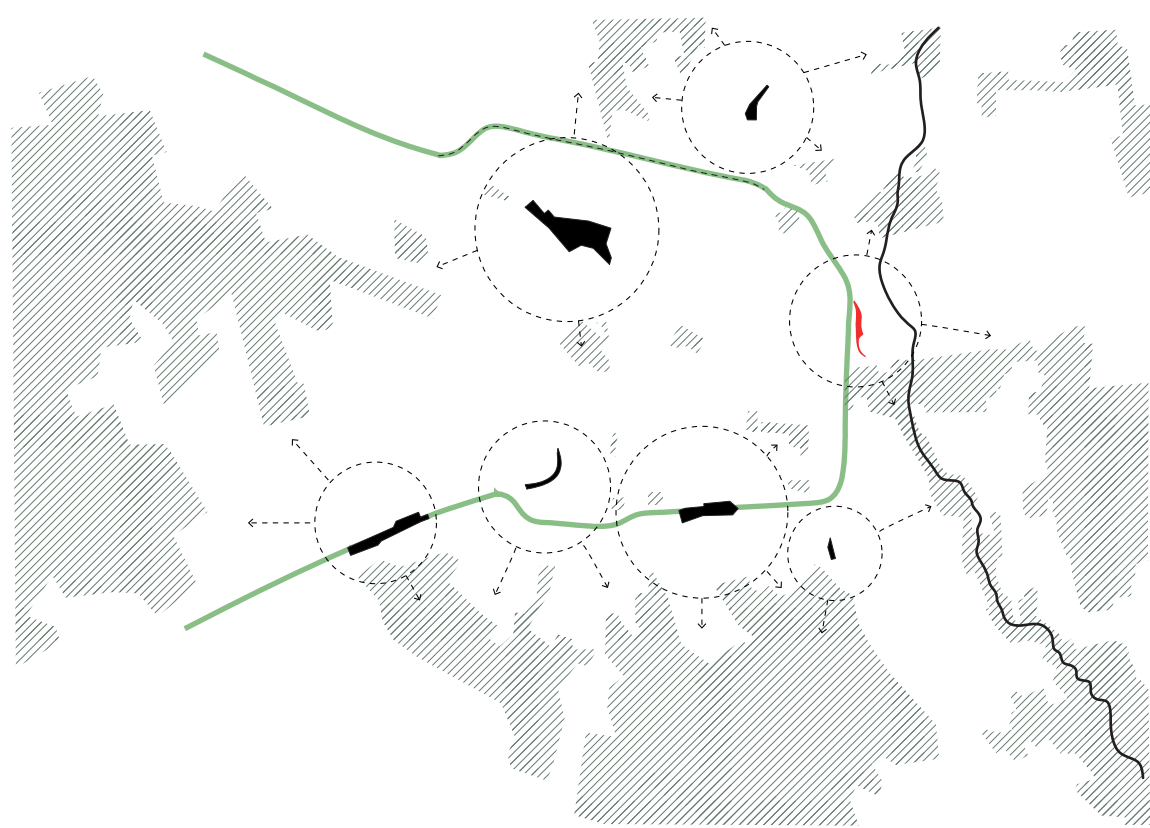




Scali di Milan Projects m²

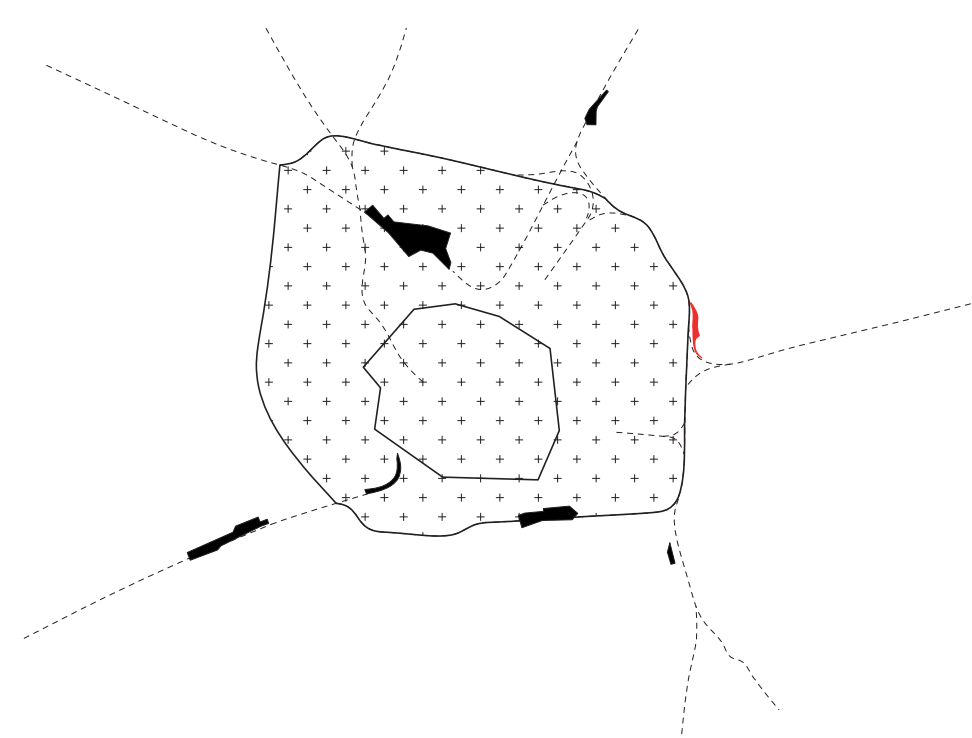
1. Milano Farini (618.733) 2. Greco Breda (73.526) **3. Milano Lambrate (70.187)** 4. Milano Rogoredo (21132) 5. Milano Porta Romana (216.614) 6. Milano Porta Genova (89137) 7. Milano San Cristoforo (158.276)

— Existing railway system
 ■ Current railways in disuse
 - - - Central Station



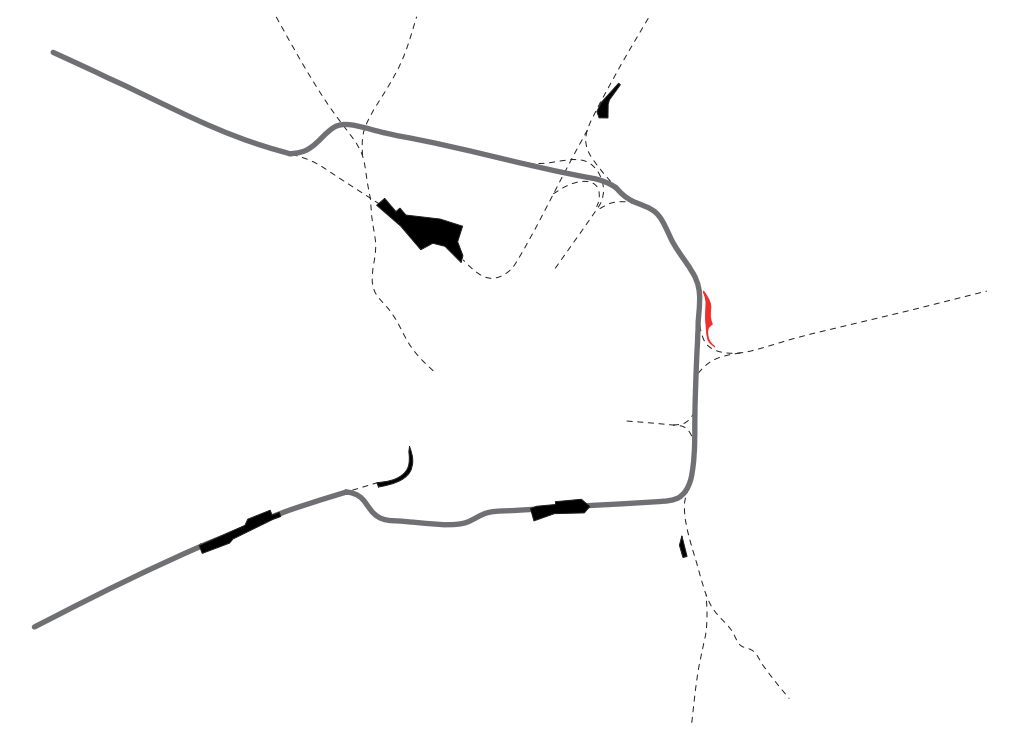
Green belt
 — Lambro river
 ▨ Regional parks

01. A Green City



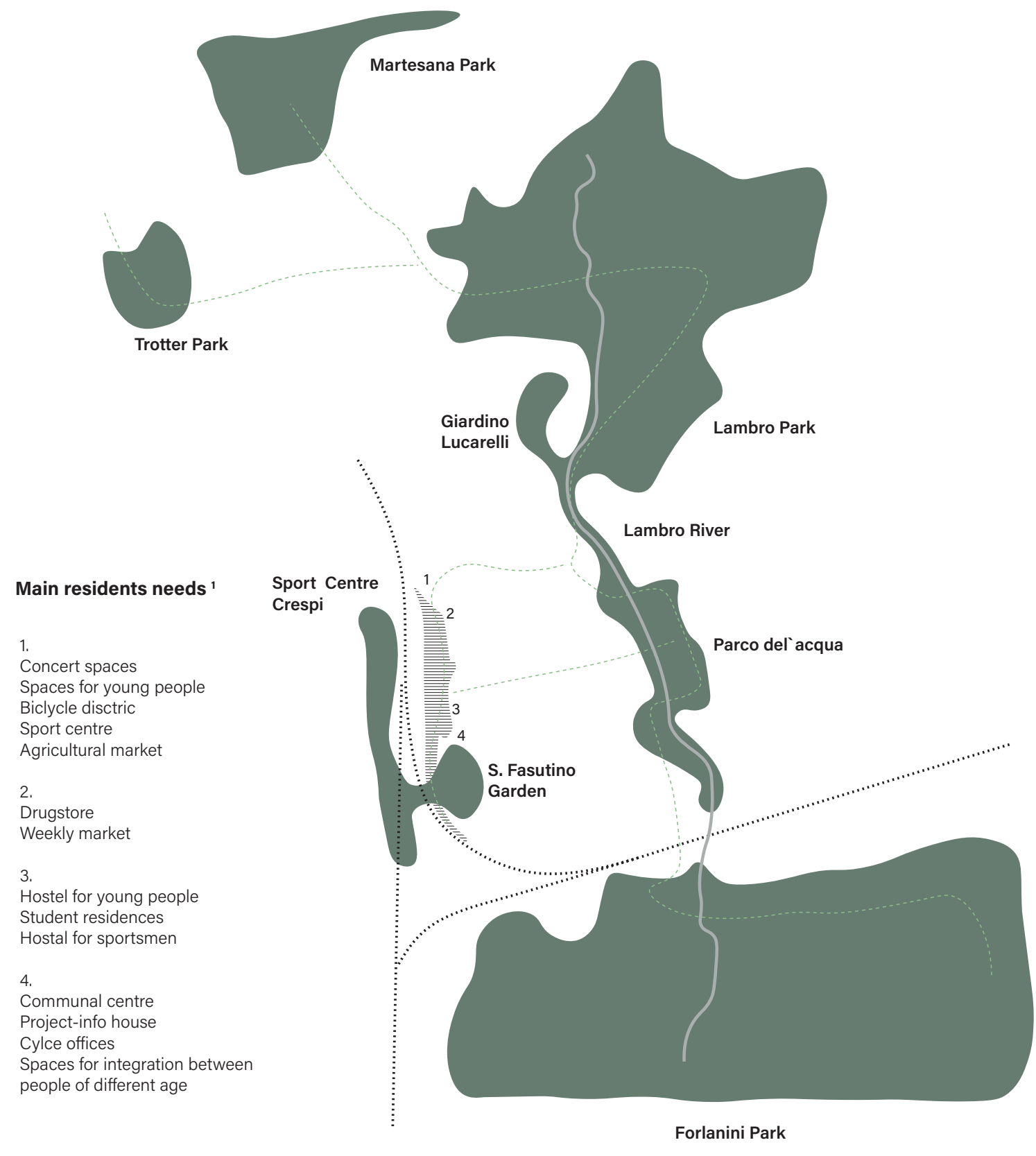
Between centre and periphery

02. A Connected City

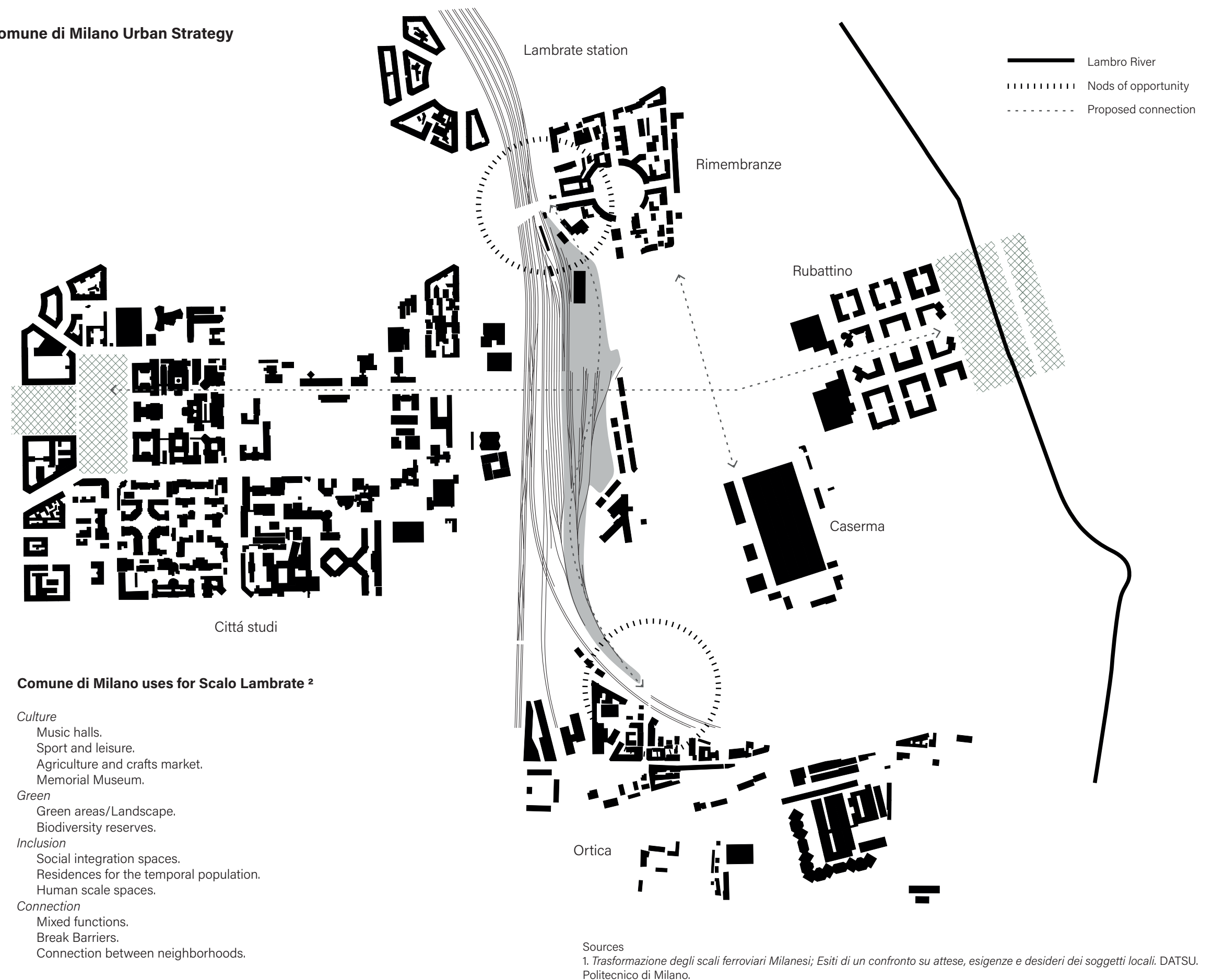


A metropolitan belt as the transition between the centre and the periphery

Community Vision



Comune di Milano Urban Strategy



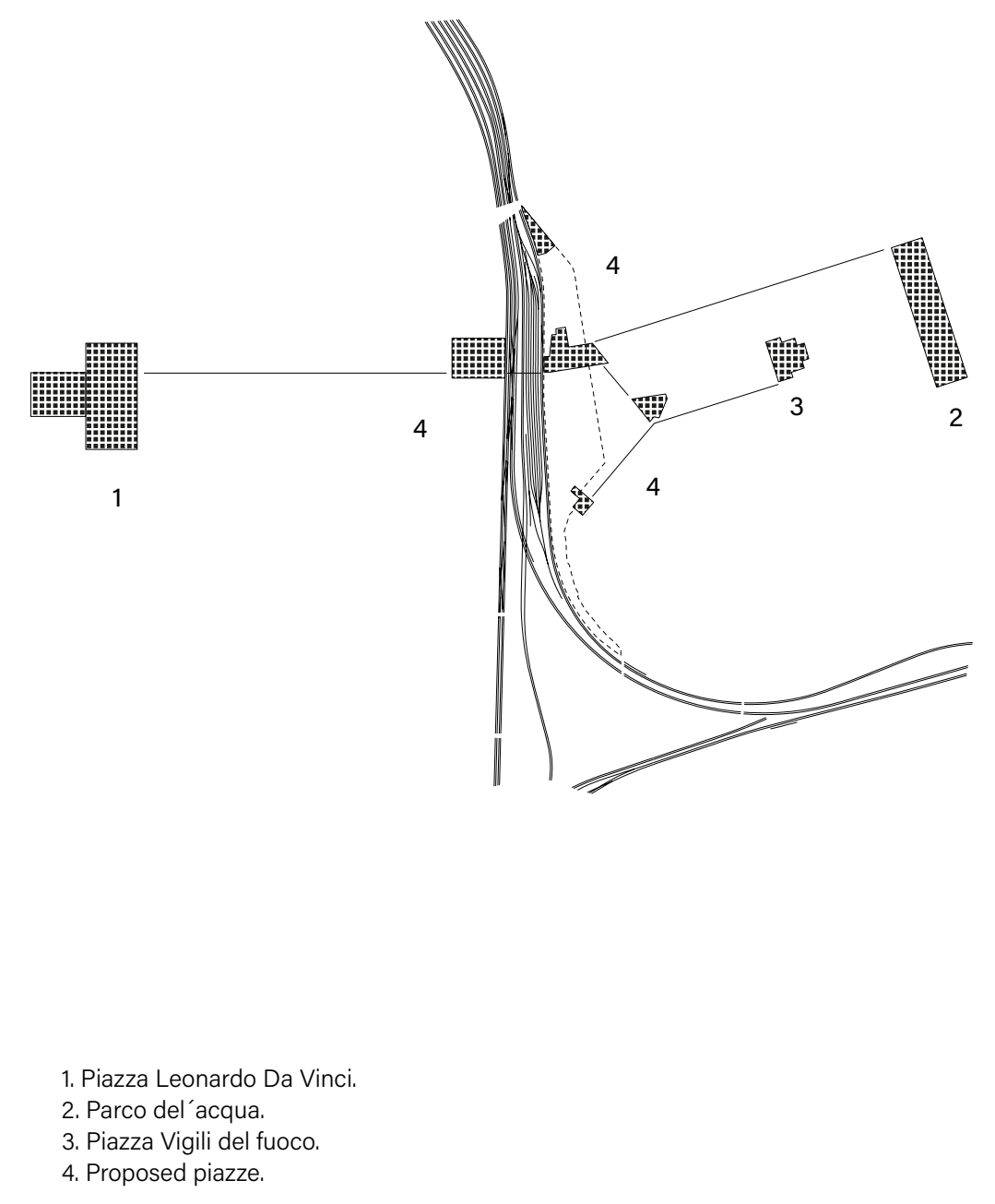
- Comune di Milano uses for Scalo Lambrate ²**
- Culture**
 - Music halls.
 - Sport and leisure.
 - Agriculture and crafts market.
 - Memorial Museum.
 - Green**
 - Green areas/Landscape.
 - Biodiversity reserves.
 - Inclusion**
 - Social integration spaces.
 - Residences for the temporal population.
 - Human scale spaces.
 - Connection**
 - Mixed functions.
 - Break Barriers.
 - Connection between neighborhoods.

Sources
 1. *Trasformazione degli scali ferroviari Milanesi; Esiti di un confronto su attese, esigenze e desideri dei soggetti locali.* DATSU, Politecnico di Milano.
 2. *Linee di indirizzo riqualificazione scalo ferroviario di Lambrate.* Comune di Milano, consiglio di municipio 3. 2017.

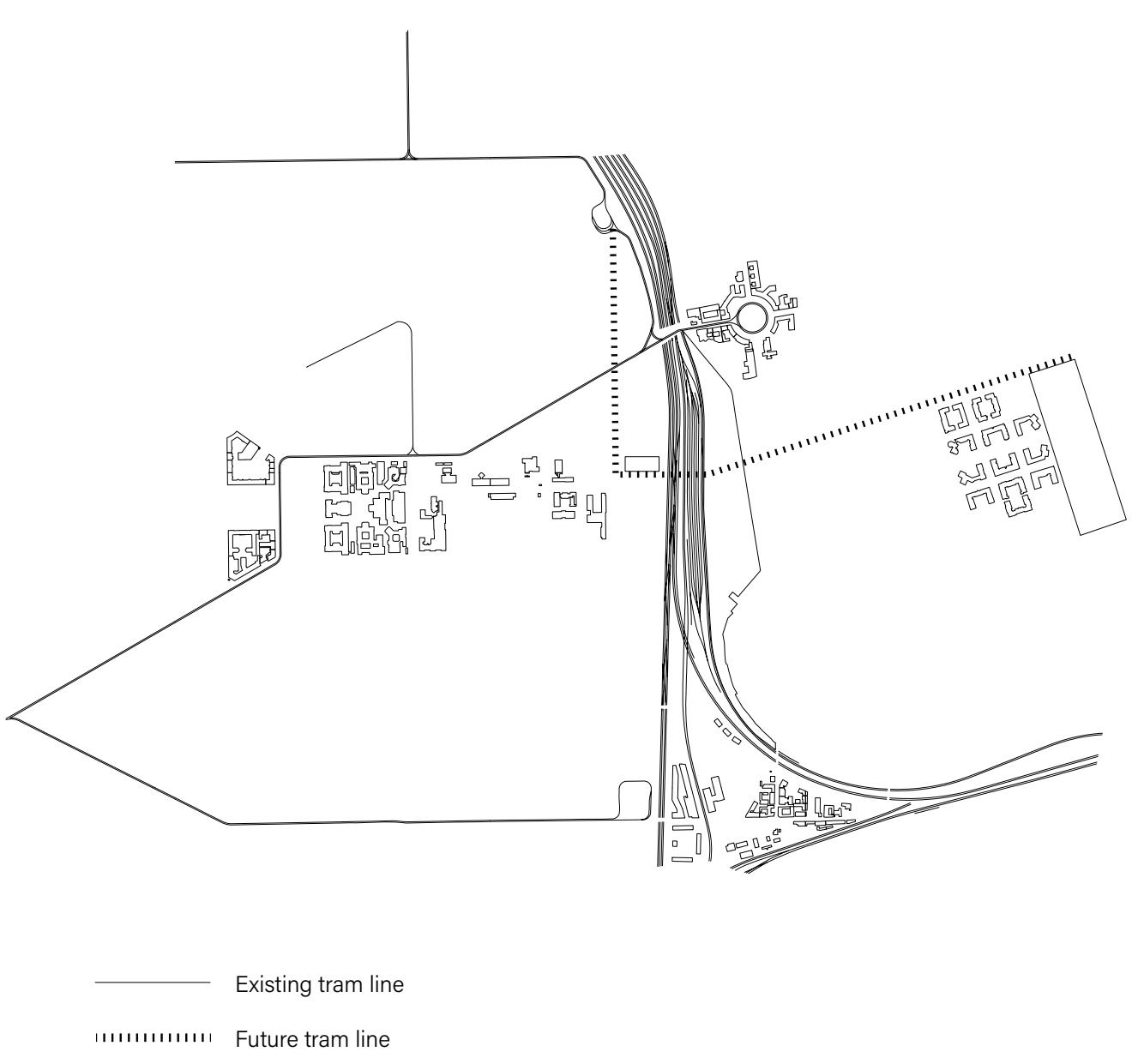
Green System



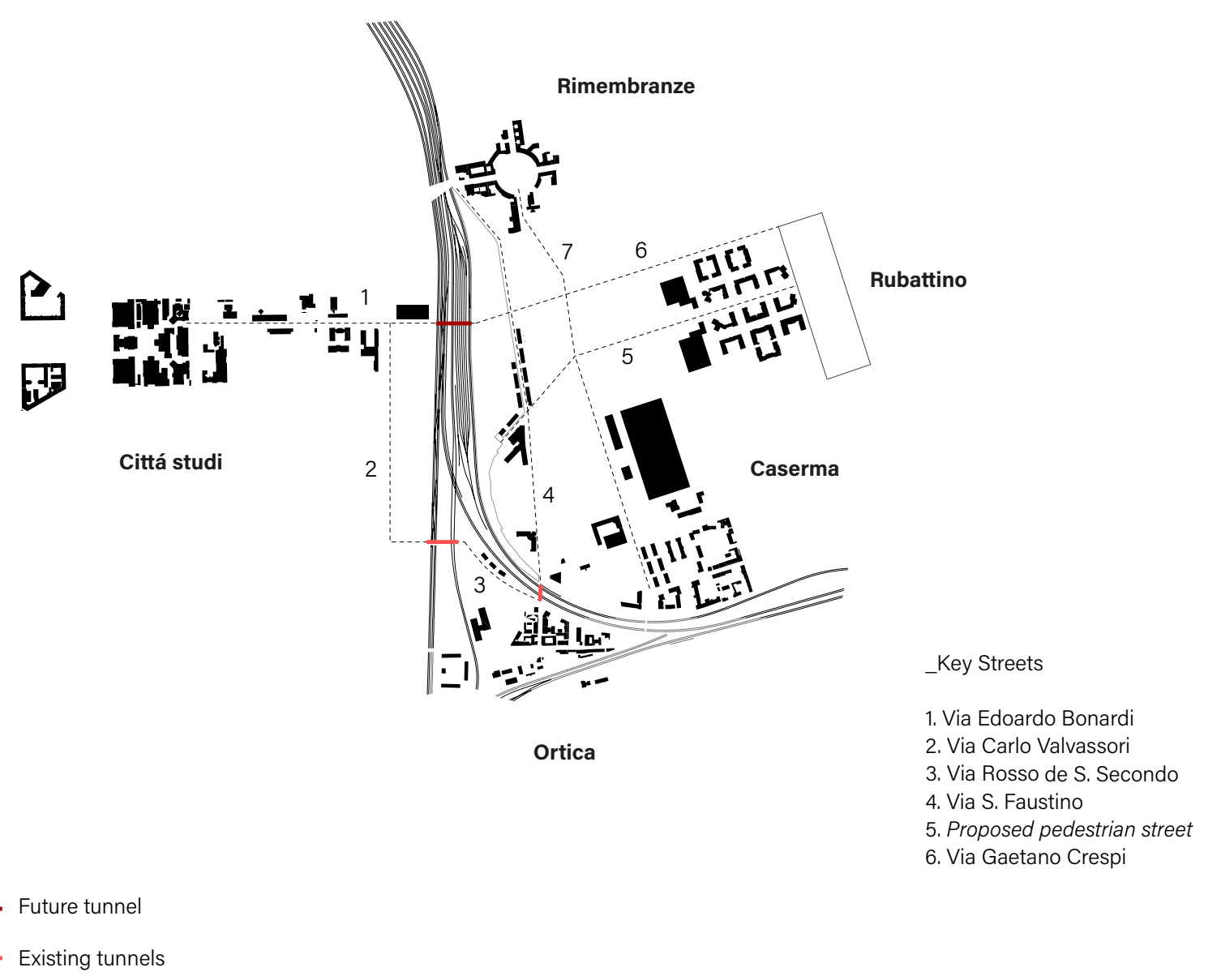
Piazza

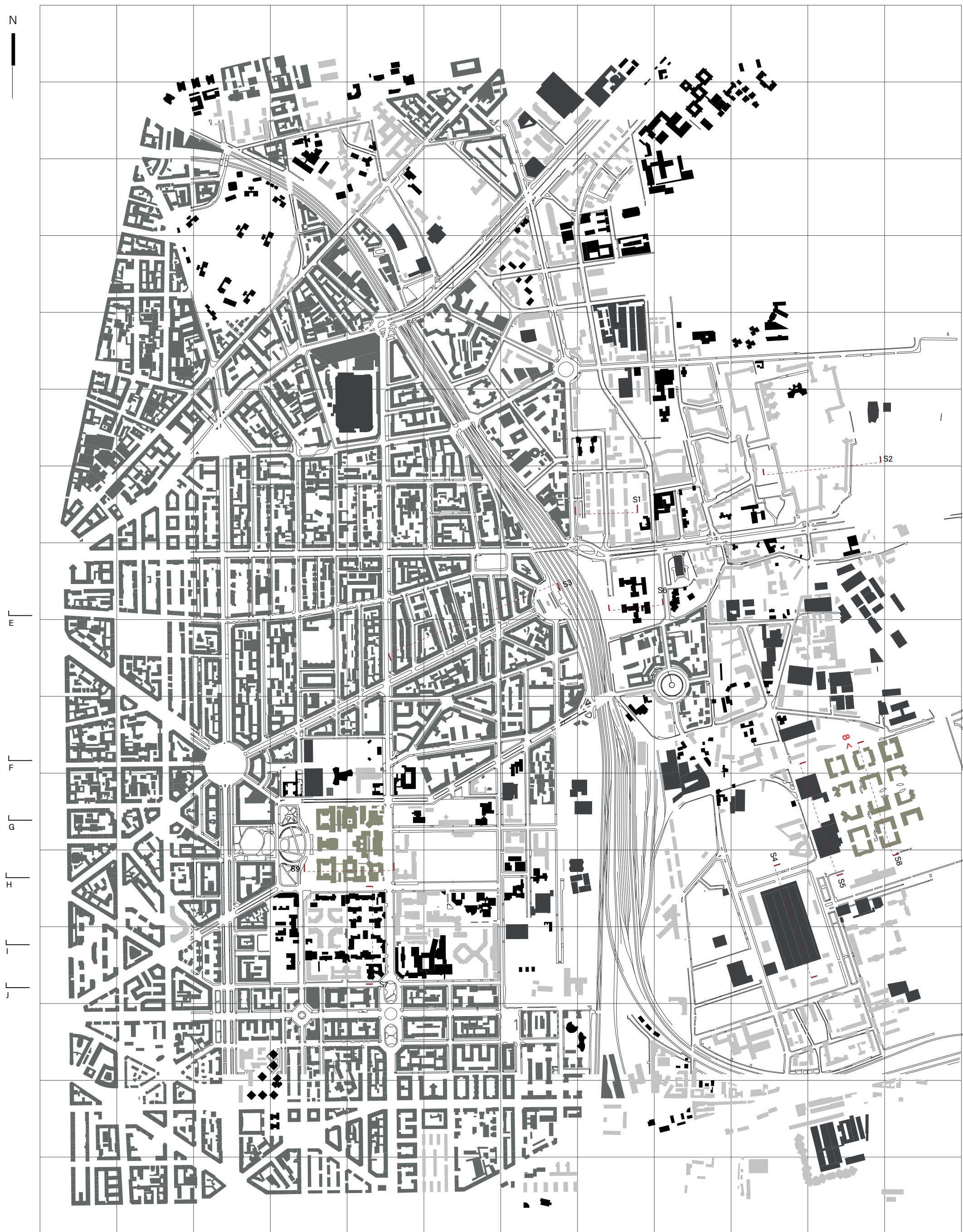


Public Transport



Neighborhoods to integrate

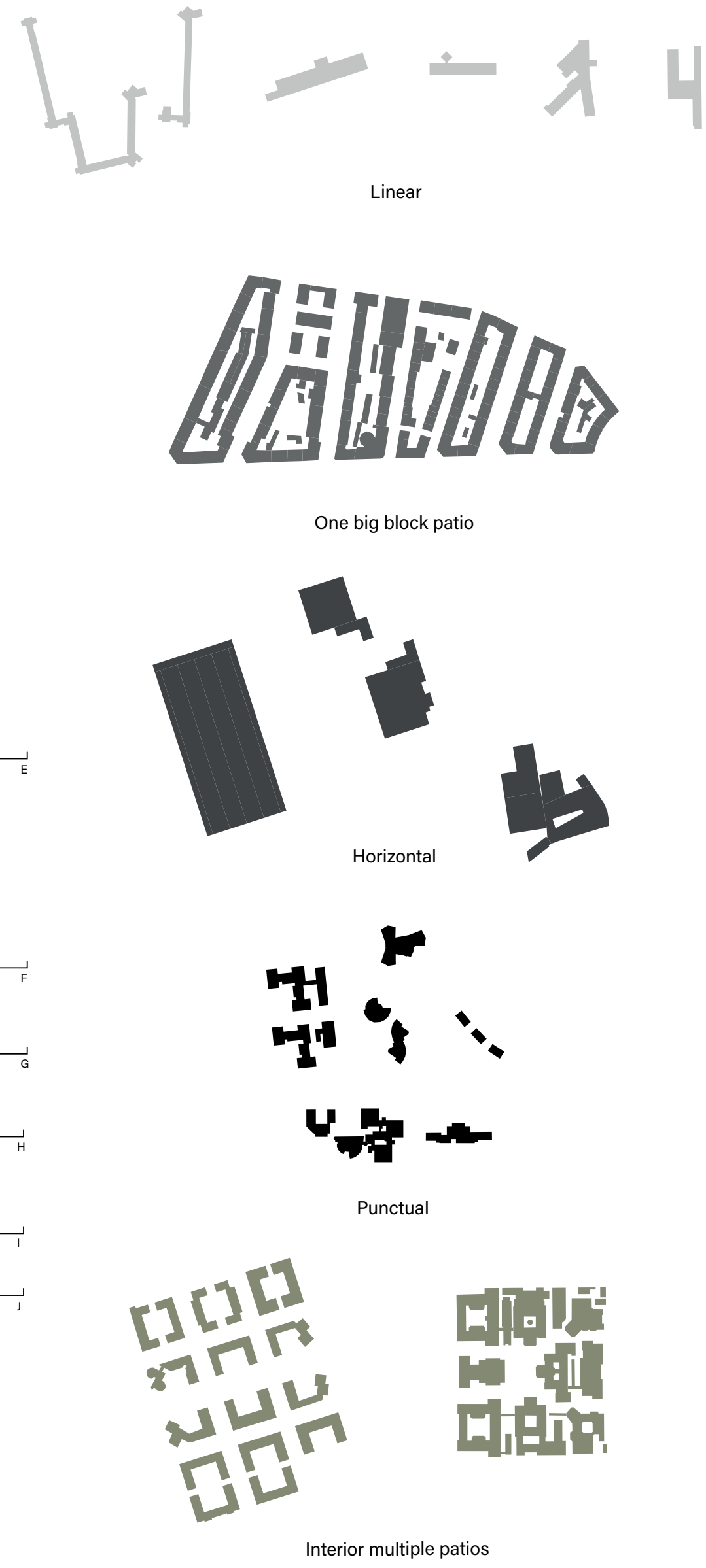




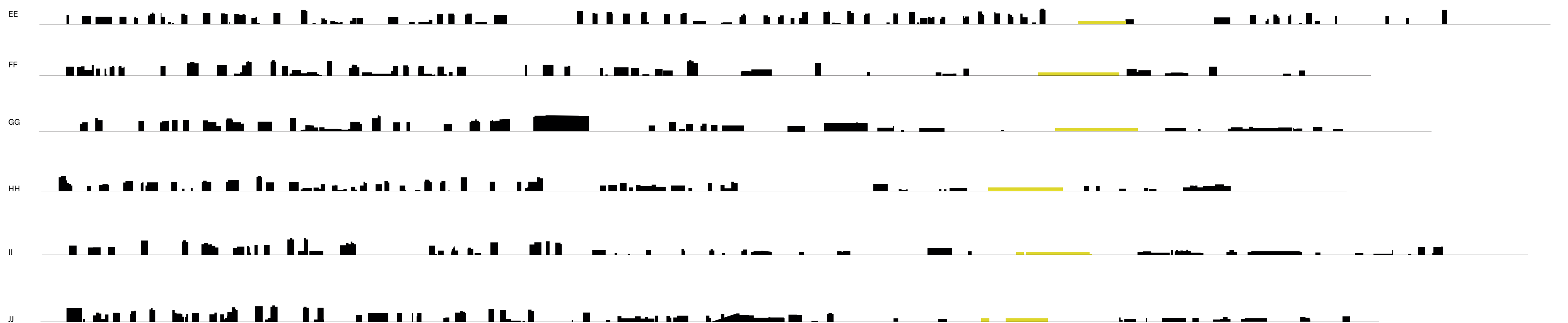
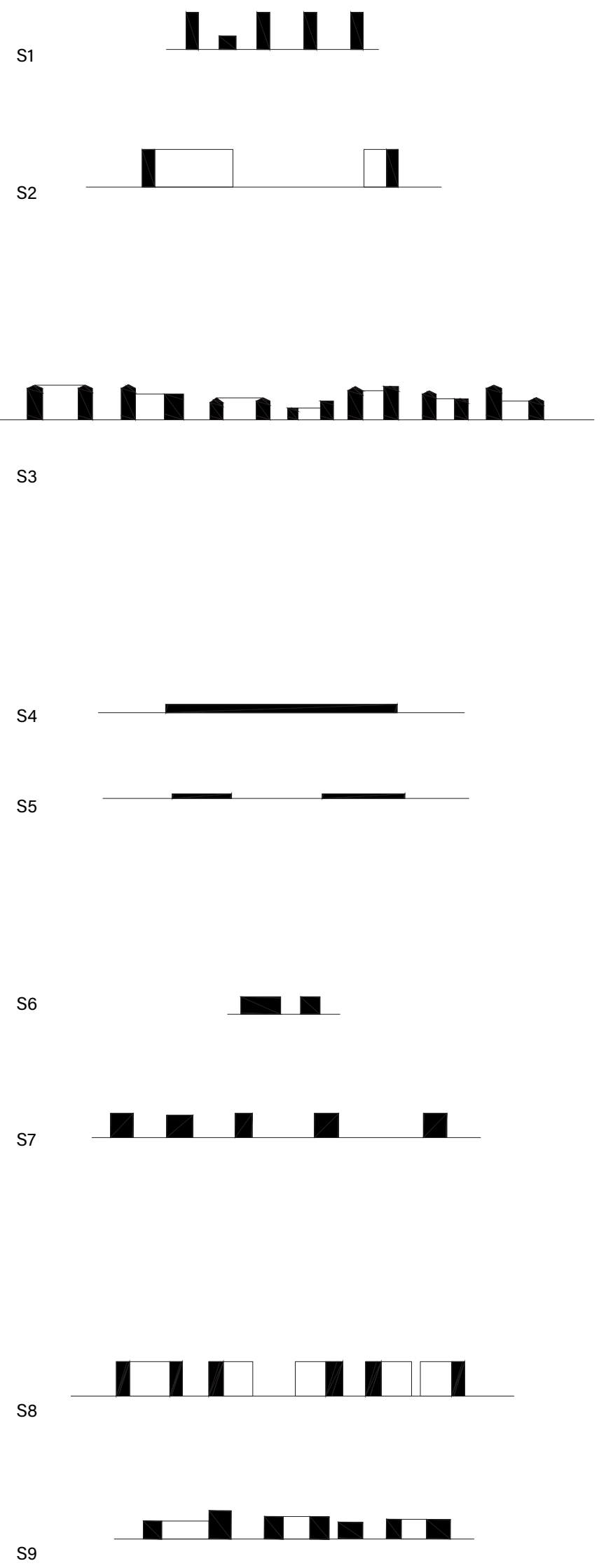
Map of different typologies

300 m

Classification

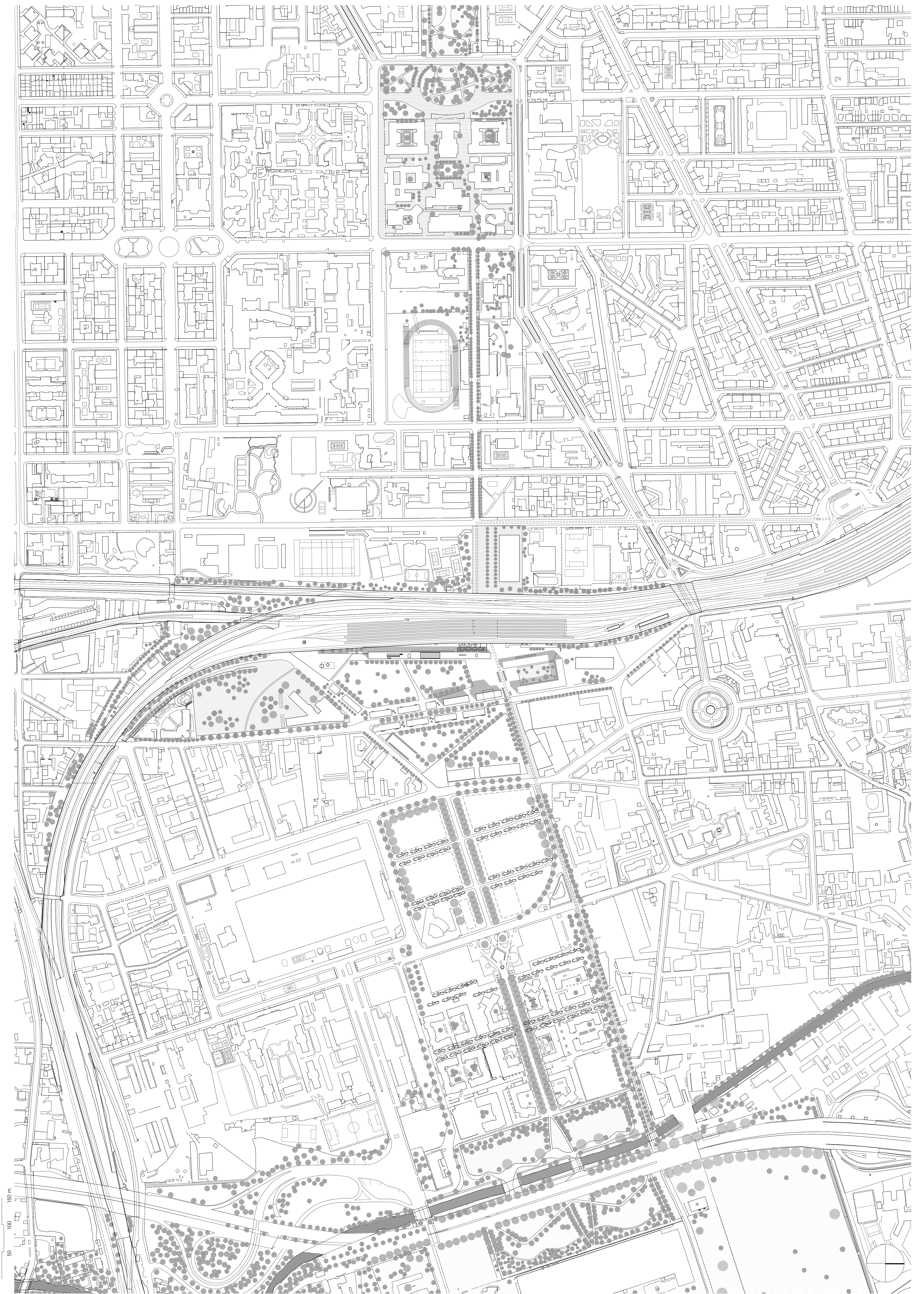


Sections

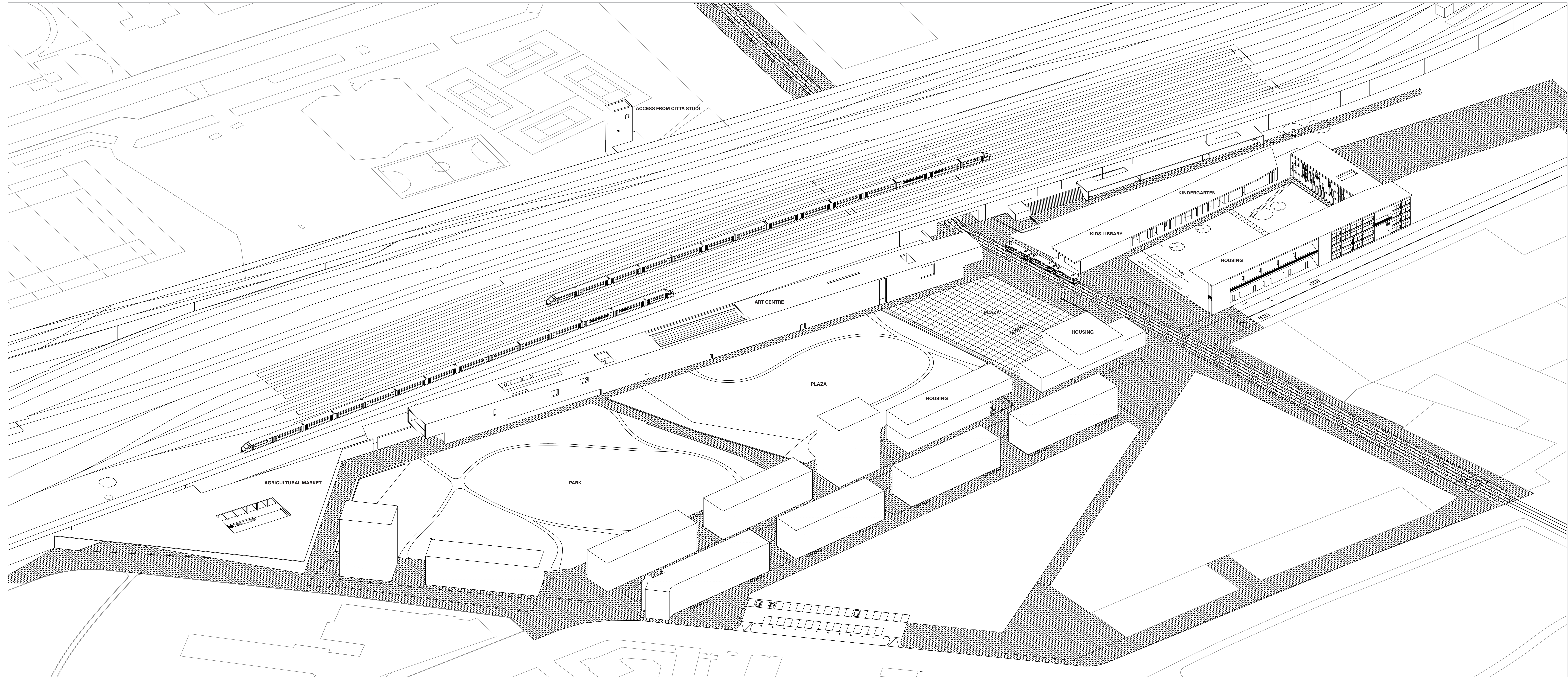


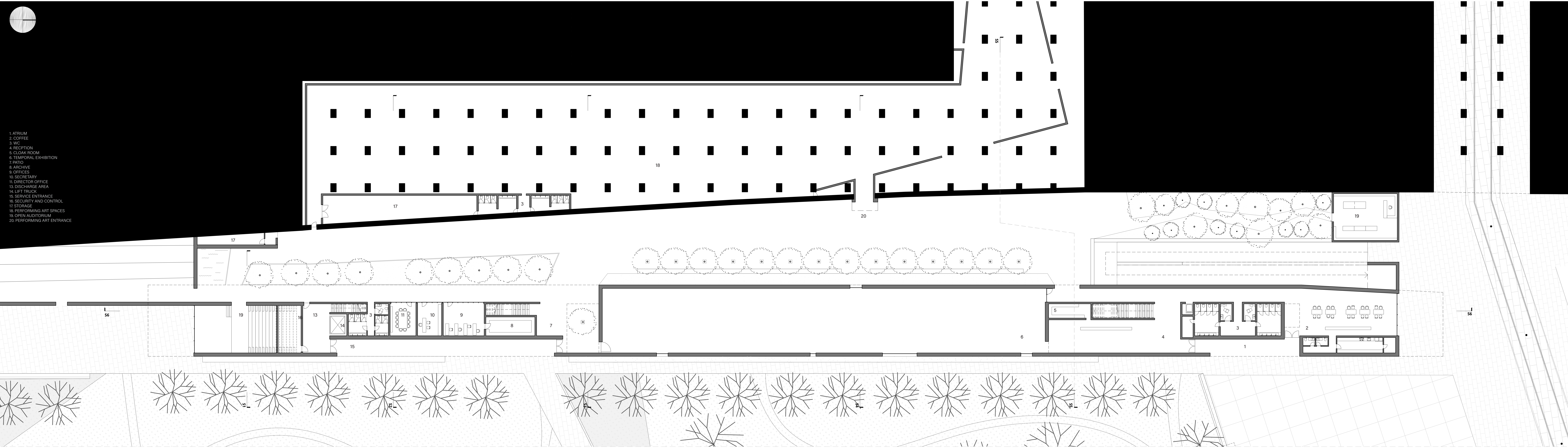
Urban Sections

0 60 120 240

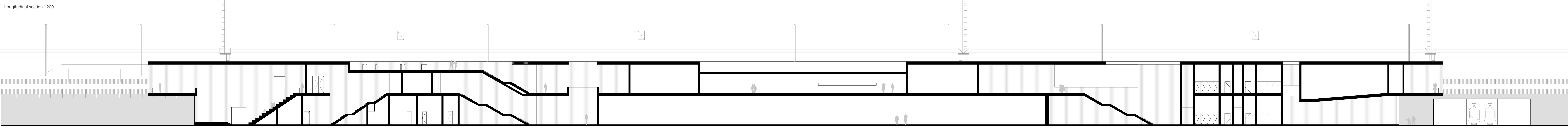




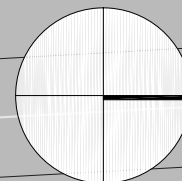




Ground Floor 1:200



Longitudinal section 1:200



15

15

s6

s6

15

15

15

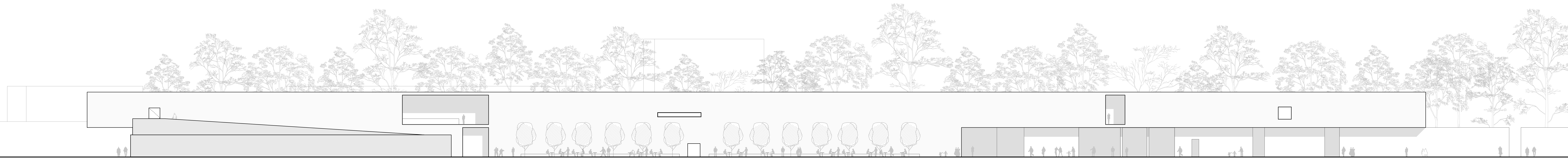
15

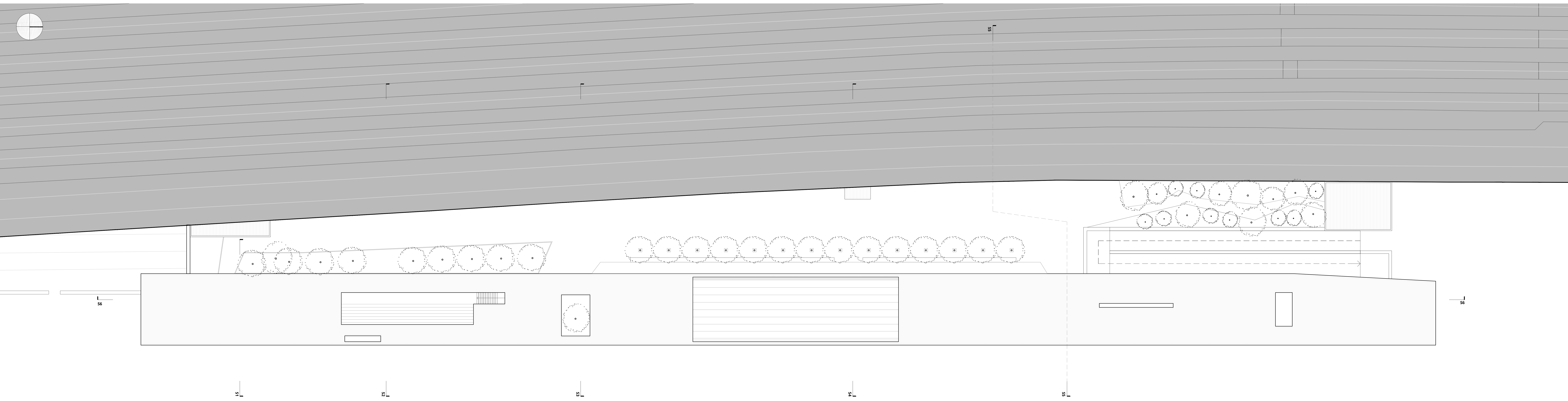
15

- 1. TERRACE
- 2. AUDITORIUM
- 3. WC
- 4. PATIO
- 5. PERMANENT COLLECTION
- 6. PATIO
- 7. LIBRARY
- 8. CHILDREN ATELIER
- 9. STAFF AREA
- 10. DISCHARGE AREA
- 11. LIFT TRUCK

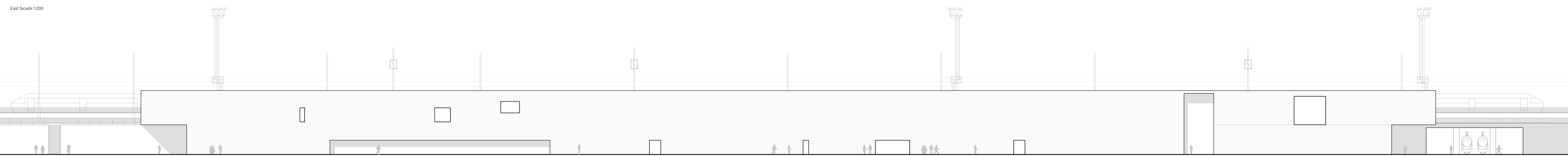
First Floor 1:200

West facade 1:200

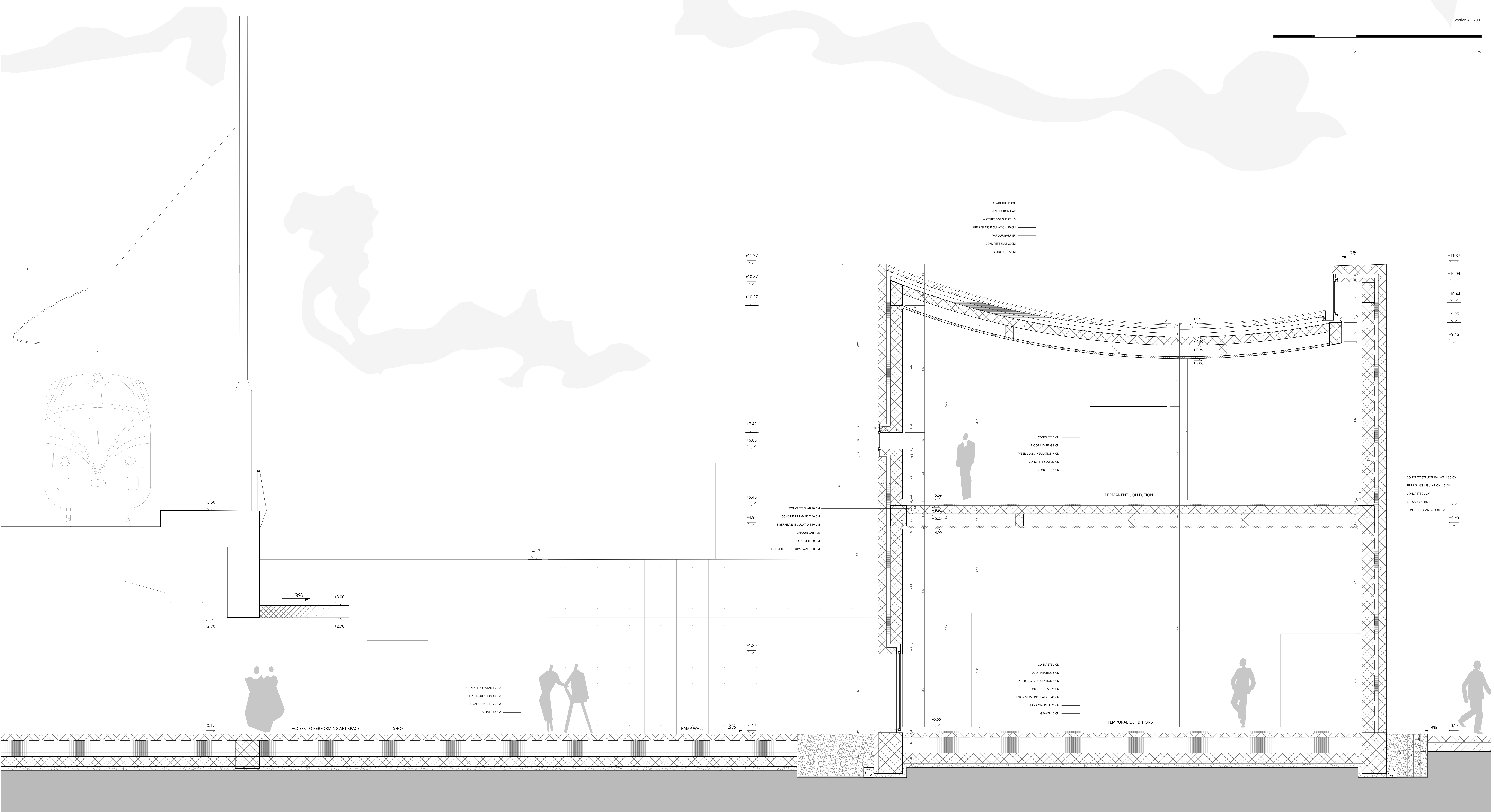




Roof floor 1:200



East facade 1:200



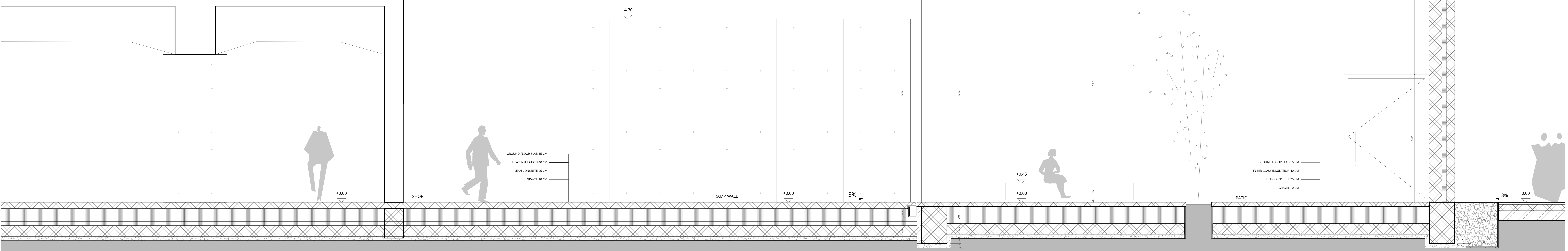
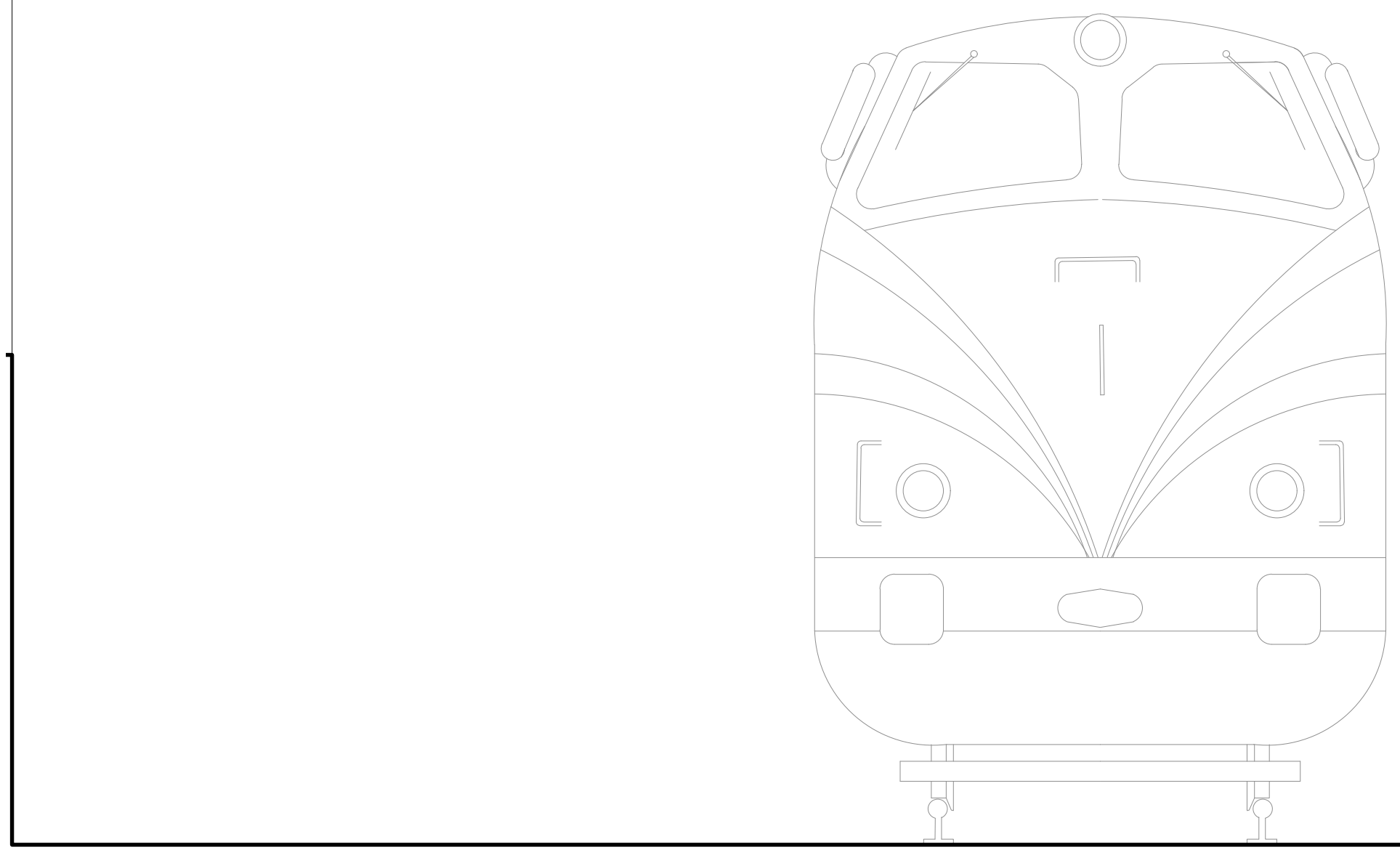
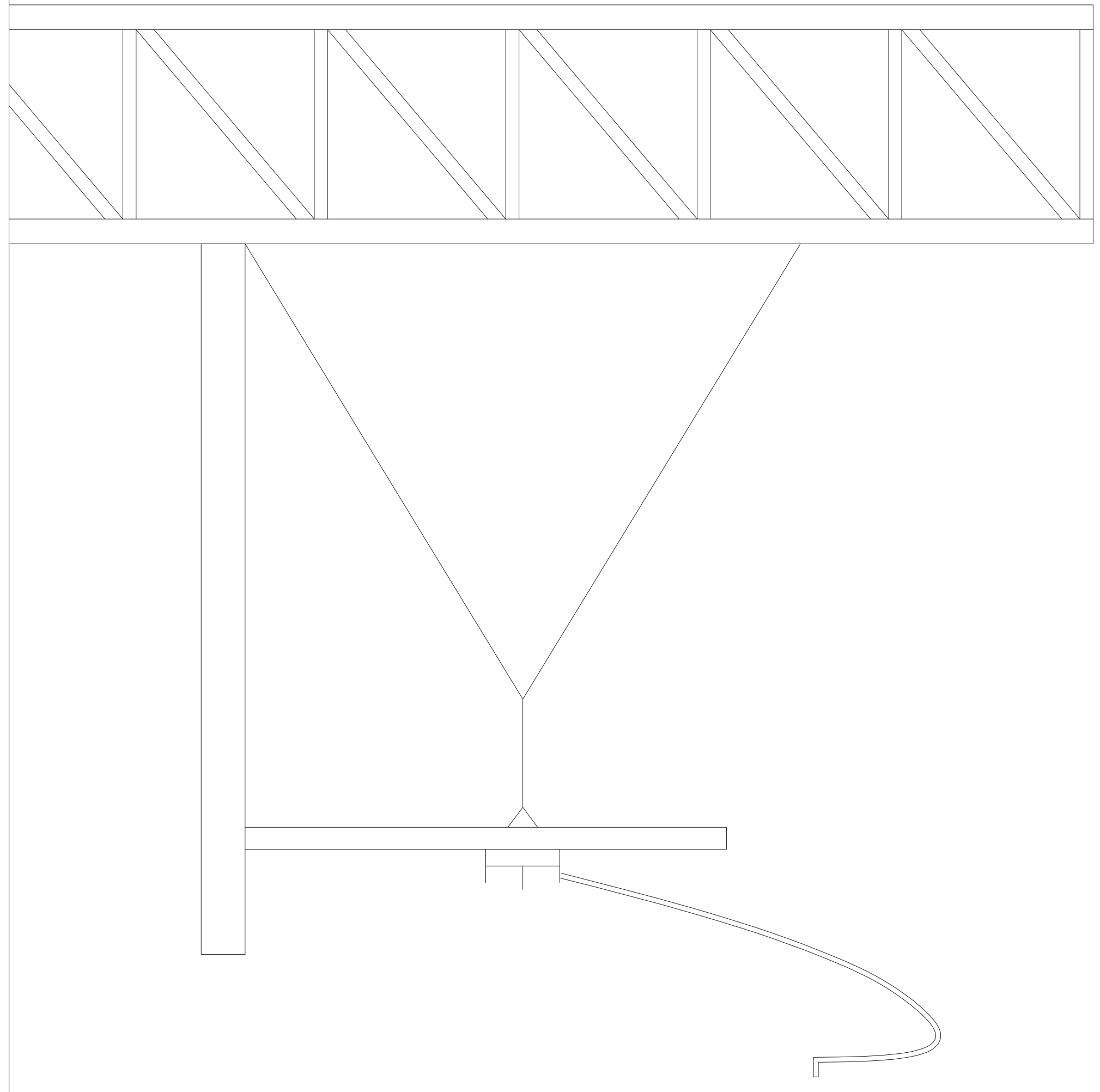
- CLADDING ROOF
- VENTILATION GAP
- WATERPROOF SHEATING
- FIBER GLASS INSULATION 20 CM
- VAPOUR BARRIER
- CONCRETE SLAB 20CM
- CONCRETE 5 CM

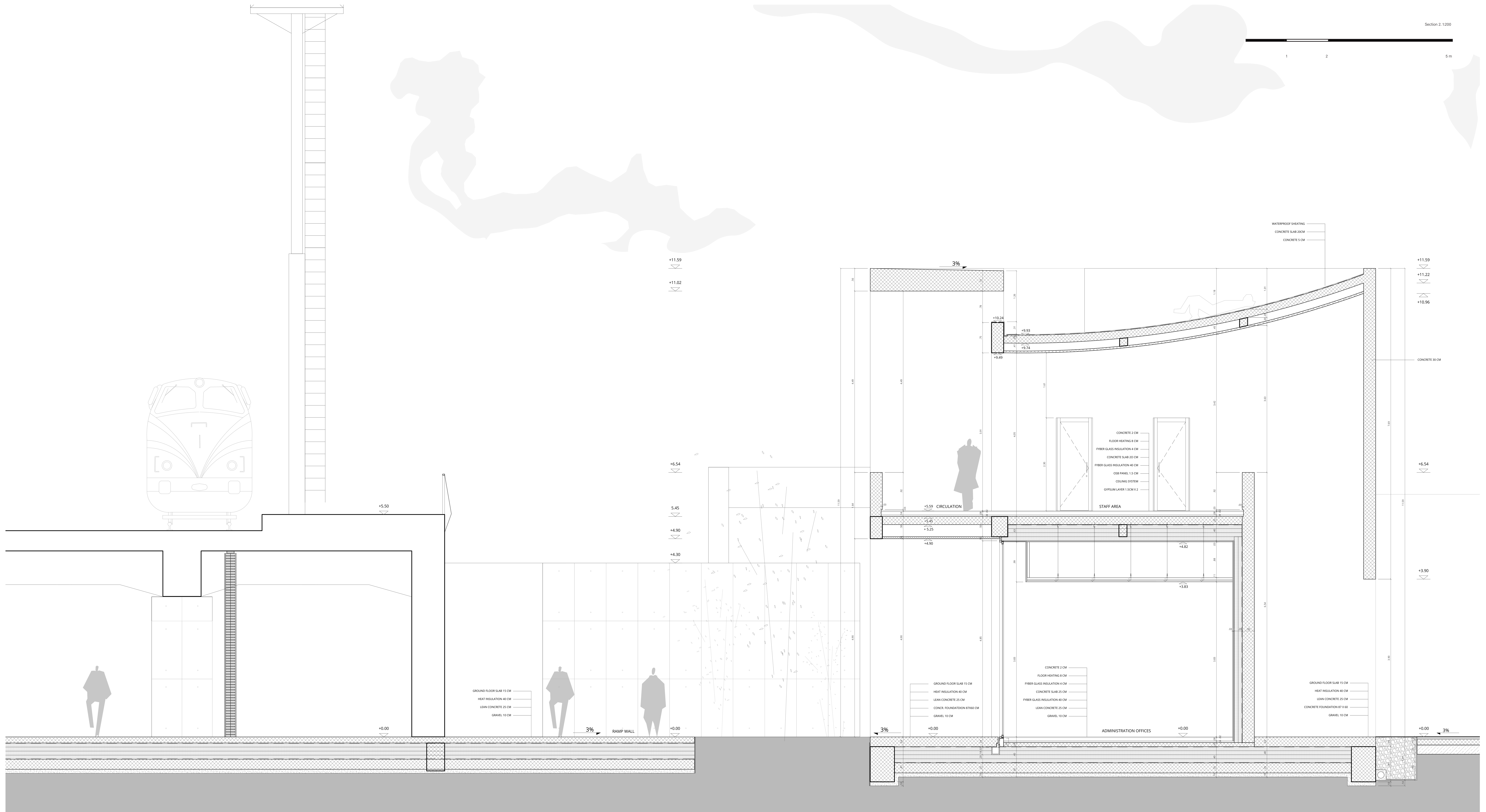
- CONCRETE 2 CM
- FLOOR HEATING 8 CM
- FIBER GLASS INSULATION 4 CM
- CONCRETE SLAB 20 CM
- CONCRETE 5 CM

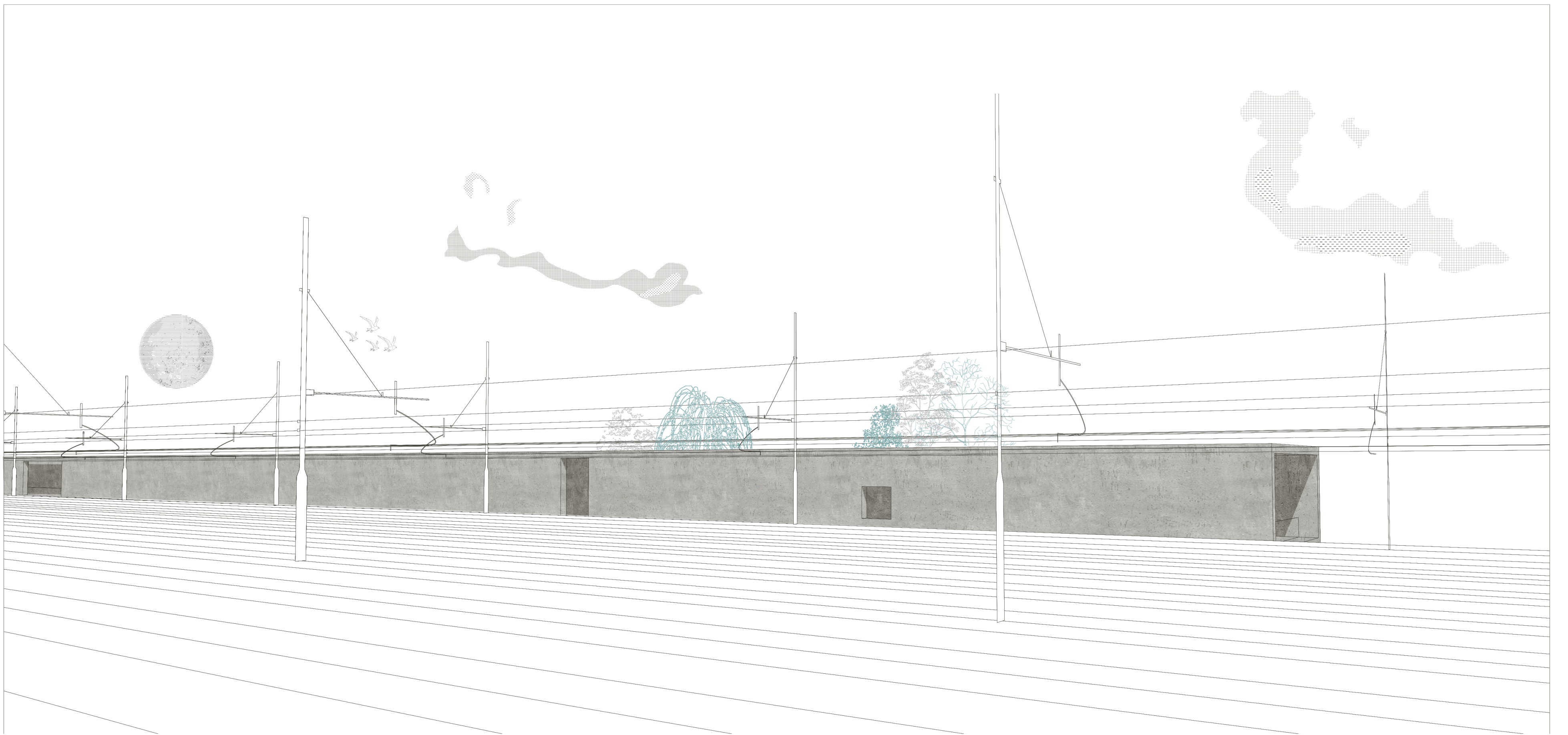
- CONCRETE STRUCTURAL WALL 30 CM
- FIBER GLASS INSULATION 10 CM
- CONCRETE 20 CM
- VAPOUR BARRIER
- CONCRETE BEAM 50 X 40 CM

- GROUND FLOOR SLAB 15 CM
- HEAT INSULATION 40 CM
- LEAN CONCRETE 25 CM
- GRAVEL 10 CM

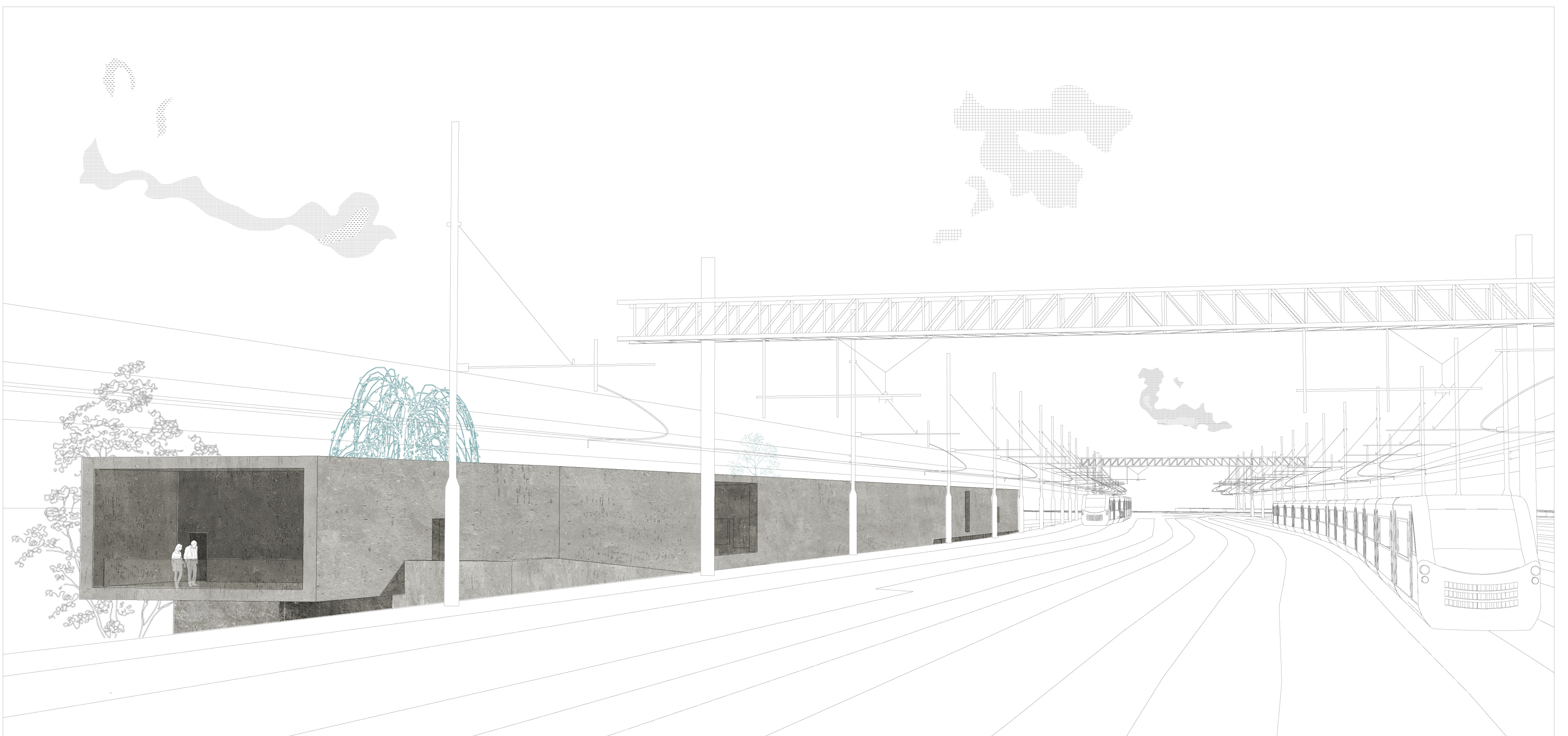
- CONCRETE 2 CM
- FLOOR HEATING 8 CM
- FIBER GLASS INSULATION 4 CM
- CONCRETE SLAB 25 CM
- FIBER GLASS INSULATION 40 CM
- LEAN CONCRETE 25 CM
- GRAVEL 10 CM







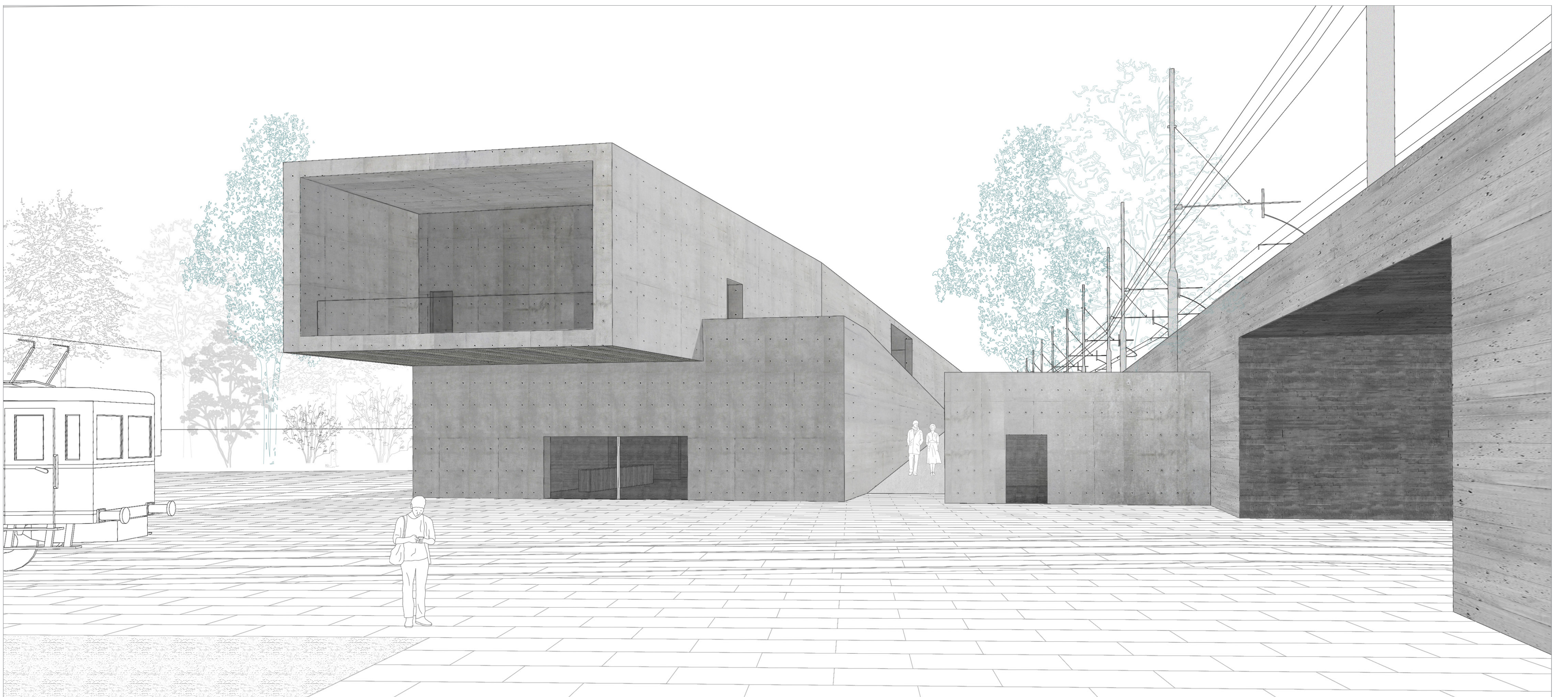
View from a train passenger



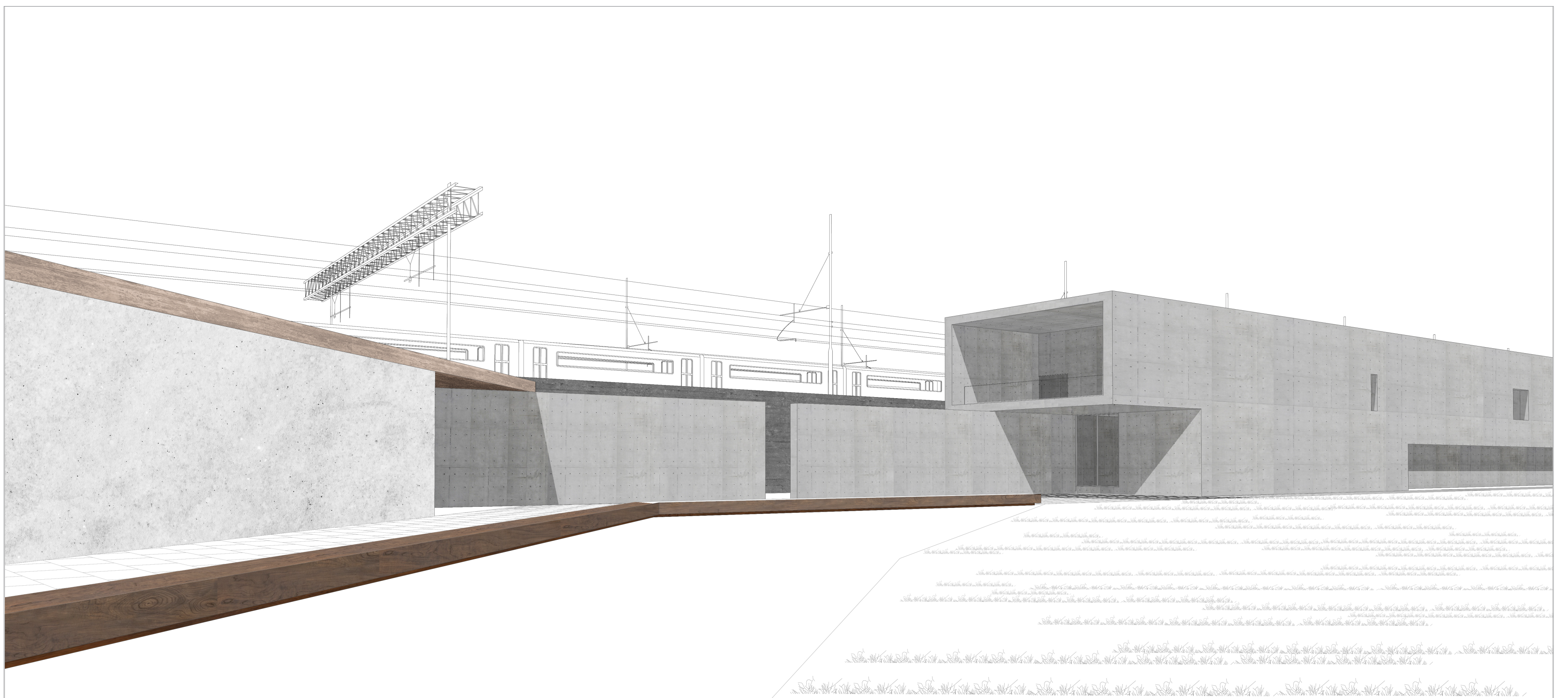
View from the train driver



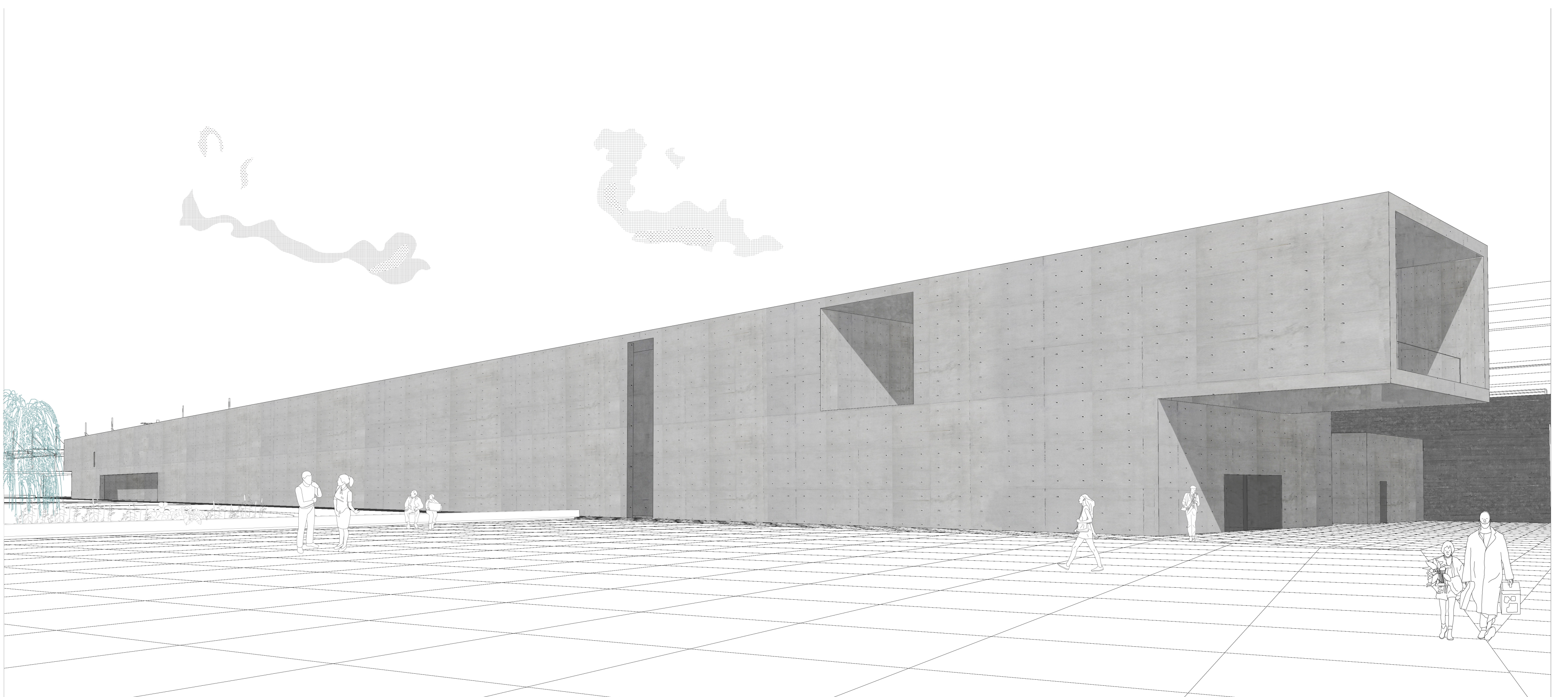
View from the rooftop terrace



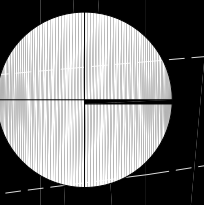
View from the tunnel. North facade



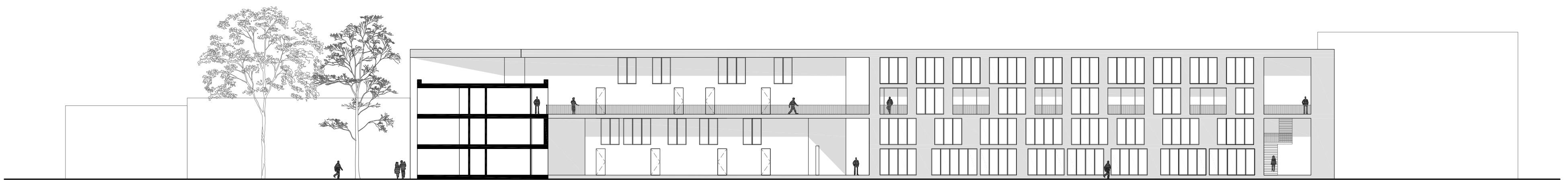
View from the park. From left to right, market, art centre patio and art centre south facade



View from the plaza



Housing ground floor. 1:300



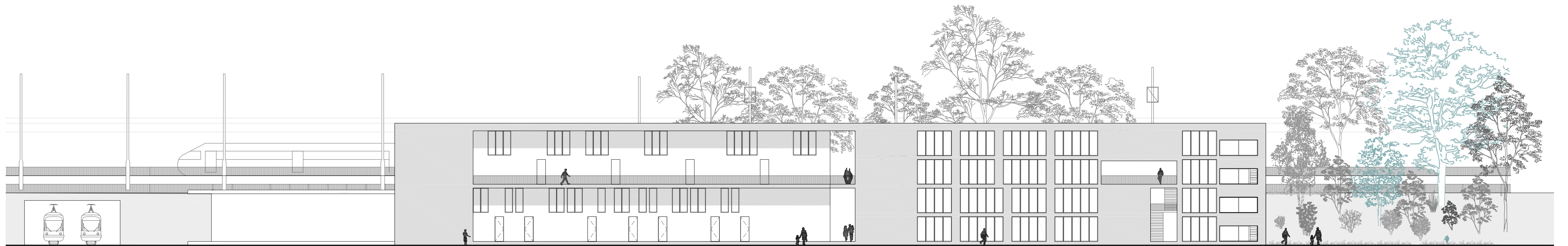
Housing section 1. 1:300



Housing section 2. 1:300



Housing first floor. 1:200



Housing Facade 1. 1:200



Housing typologies 1. 1:100