

# MAMMe

## RIQUALIFICAZIONE DEL NODO DI INTERSCAMBIO DI MILANO ROGOREDO

Politecnico di Milano | 2020

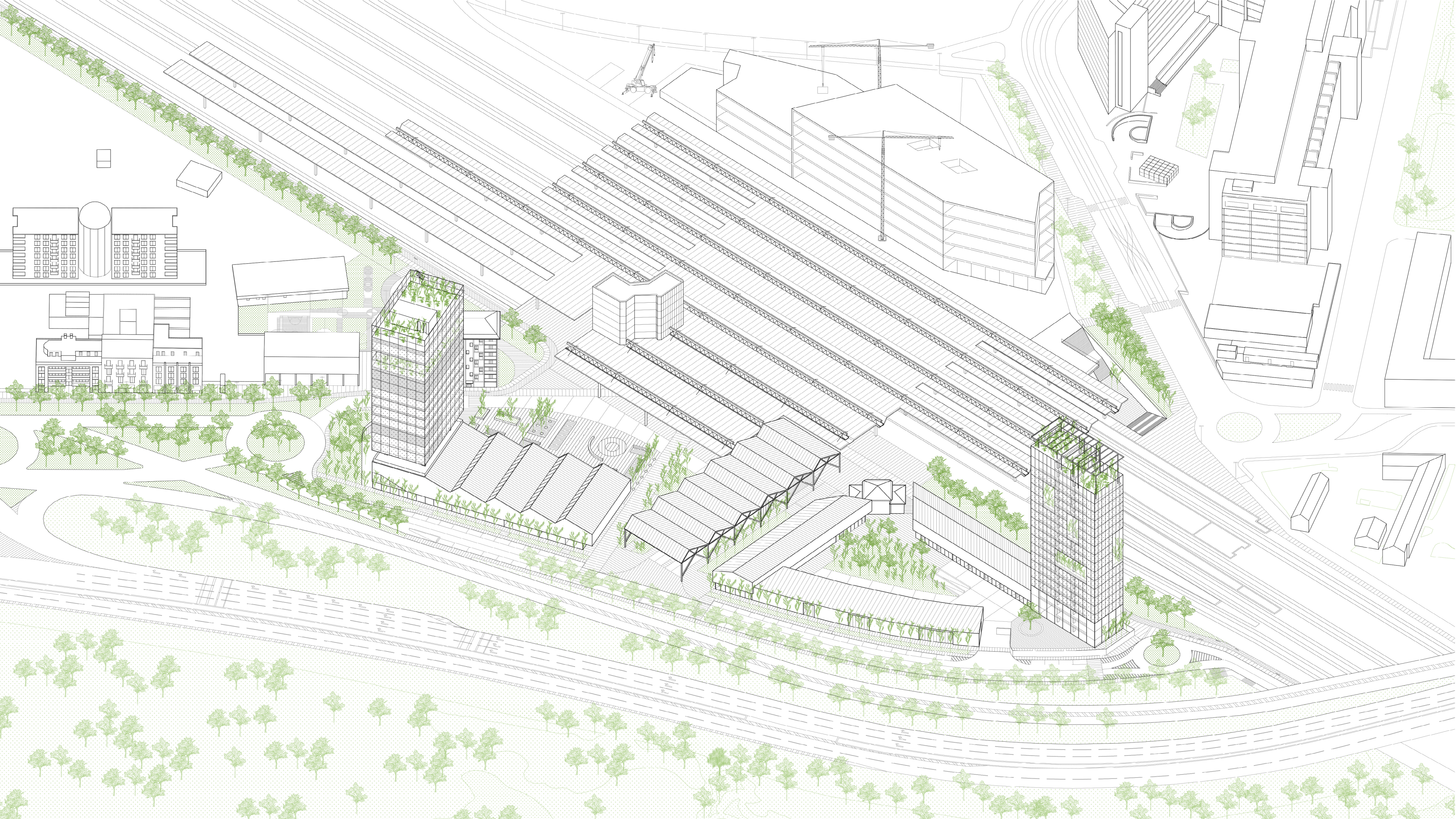
Laurea Magistrale in Architettura - Ambiente Costruito - Interni

Relatore: Filippo Orsini

Correlatore: Alessandra Oppio

Andrea Deponti | Laura Farina | Arianna Rusconi

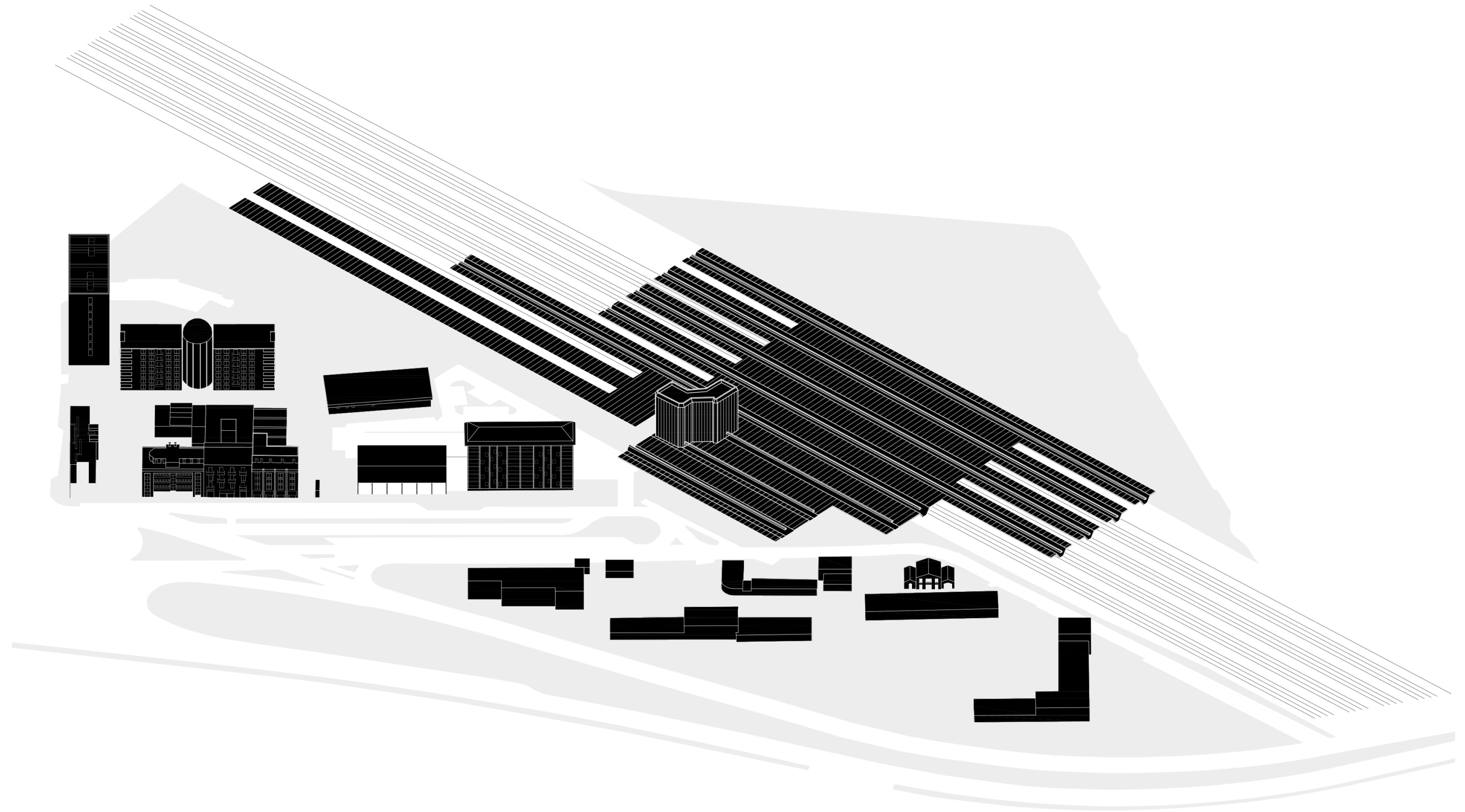






# PROCESSO PROGETTUALE

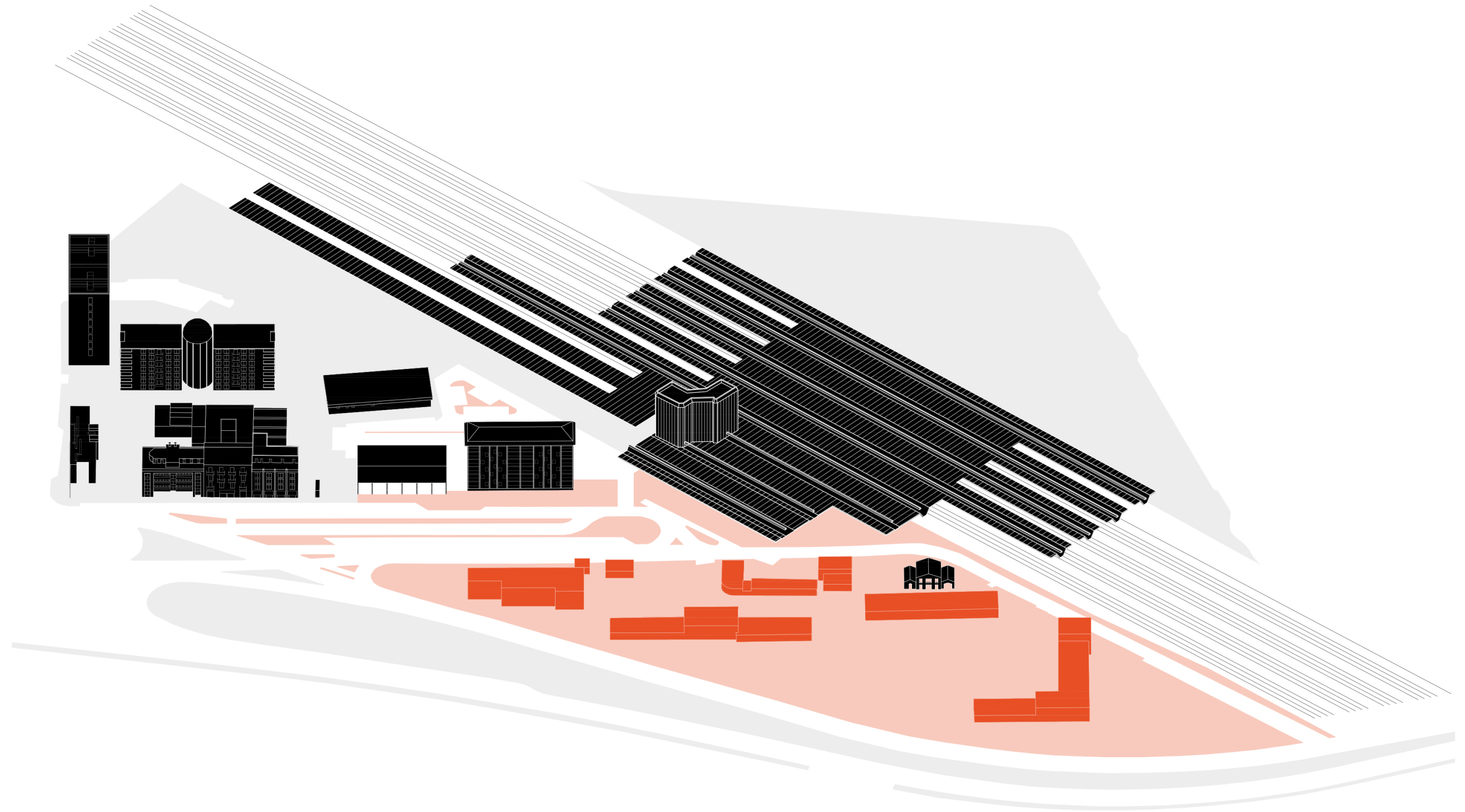
STATO DI FATTO





# PROCESSO PROGETTUALE

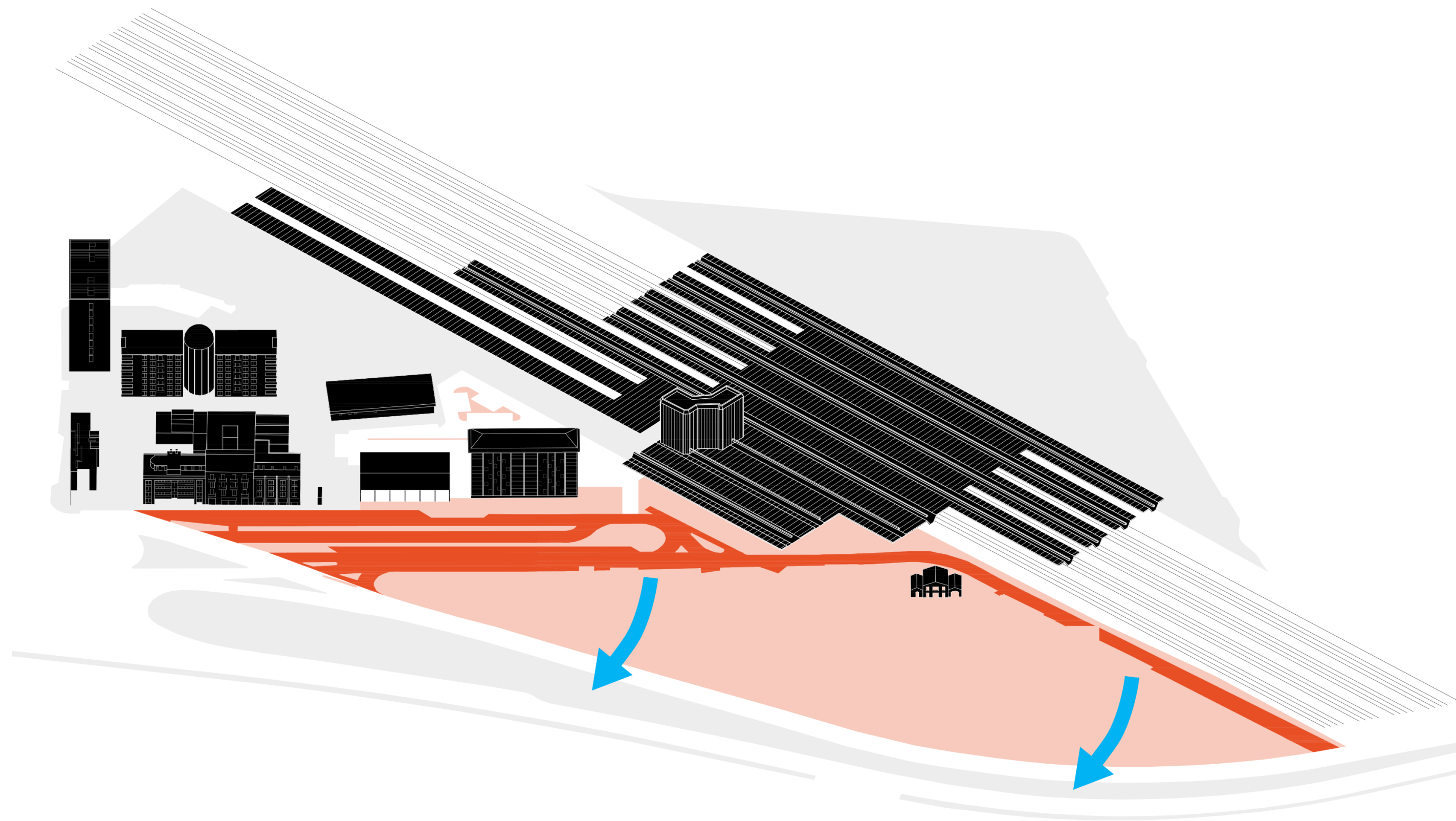
## RIMOZIONI





# PROCESSO PROGETTUALE

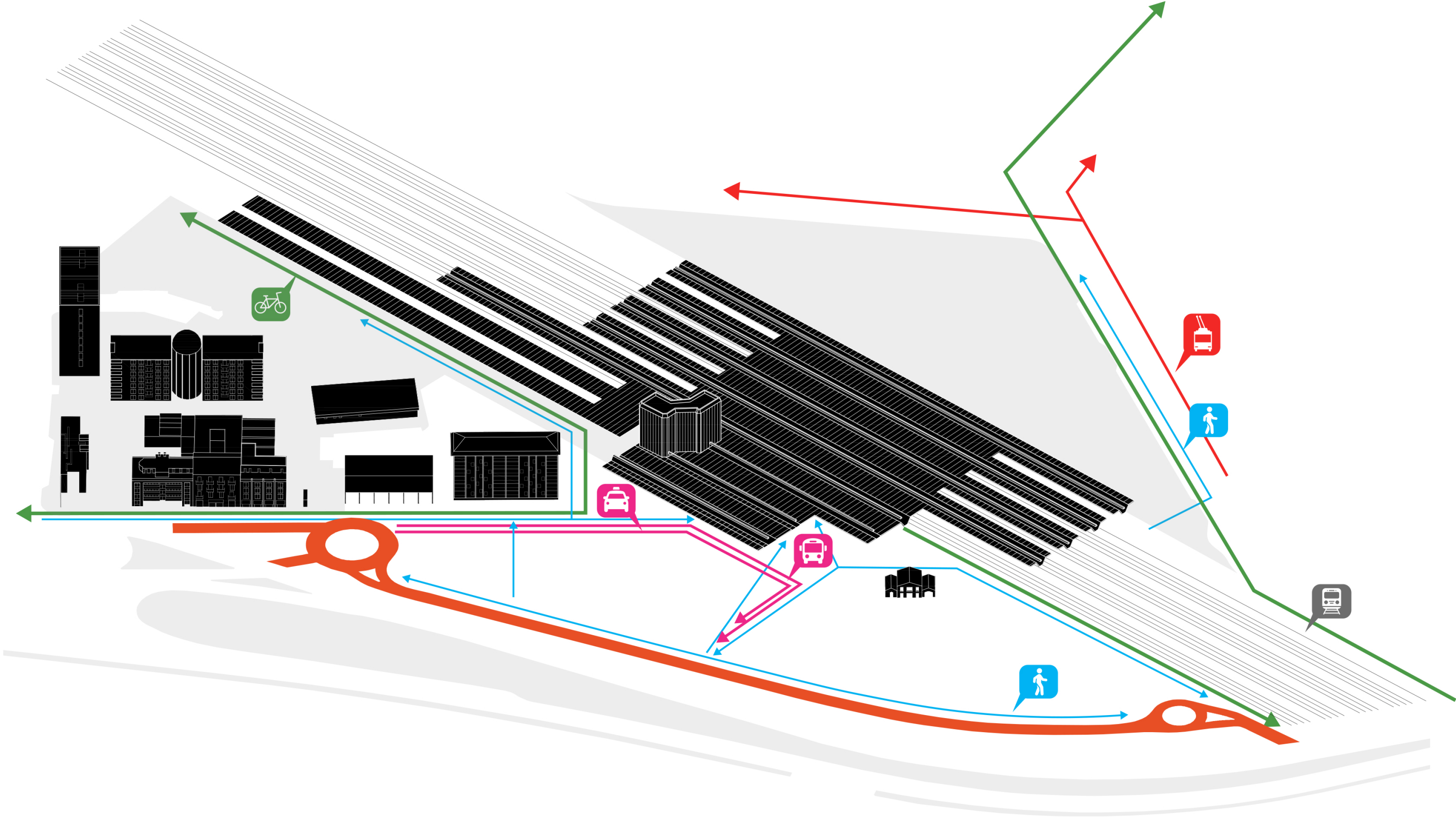
DEVIAZIONE  
DELLA  
VIABILITÀ





# PROCESSO PROGETTUALE

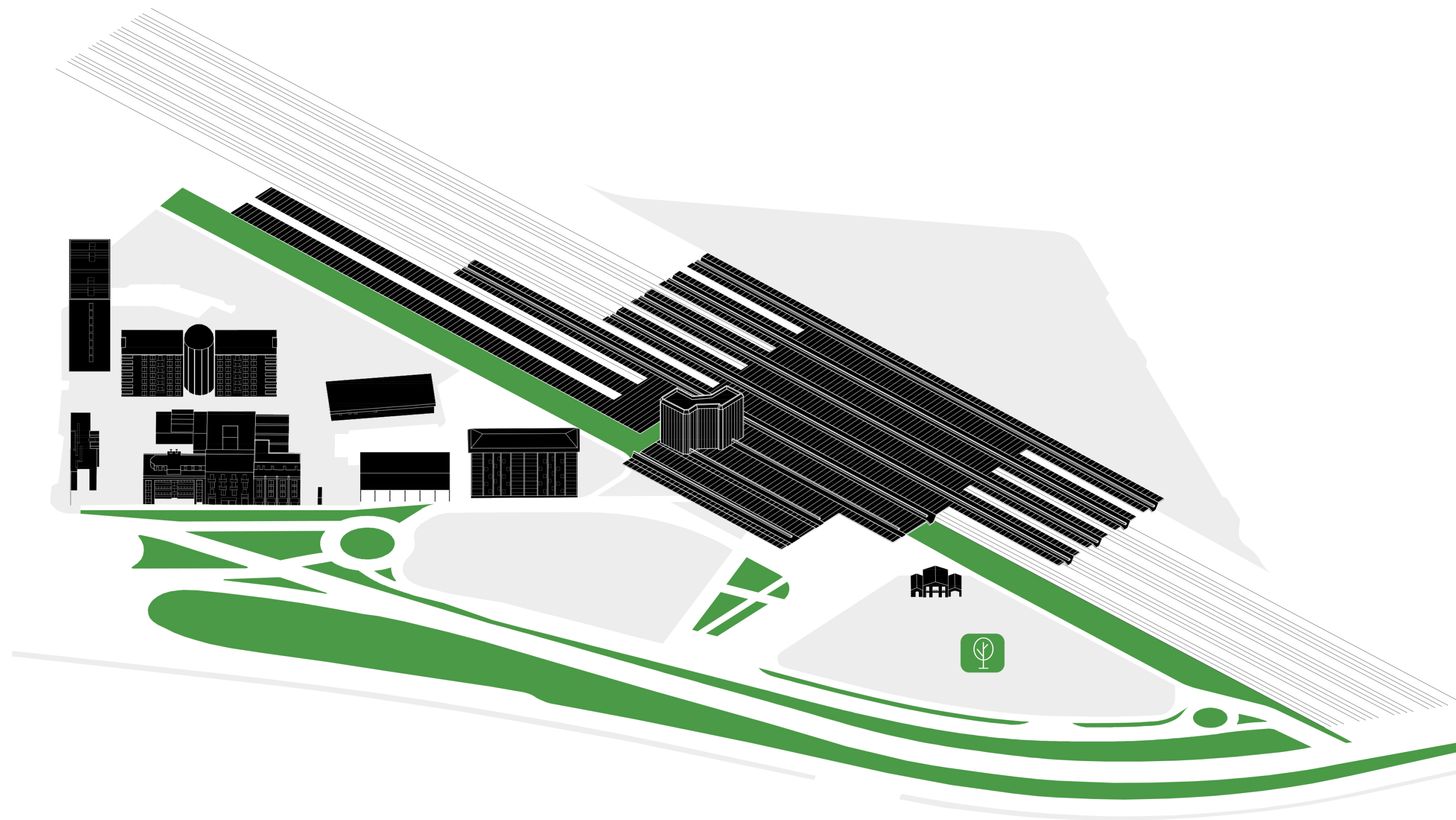
## NUOVA CIRCOLAZIONE





# PROCESSO PROGETTUALE

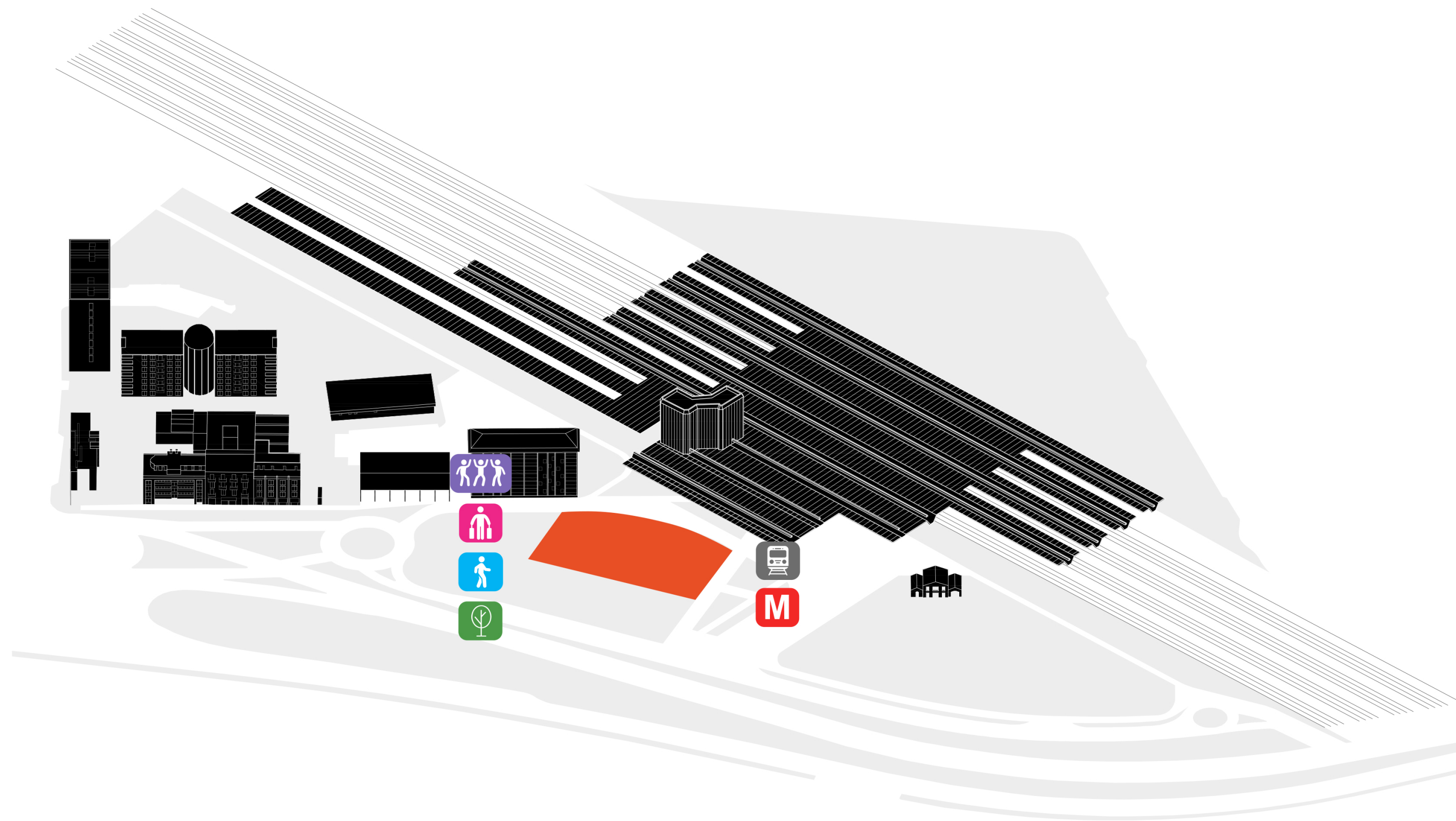
## SISTEMA DEL VERDE





# PROCESSO PROGETTUALE

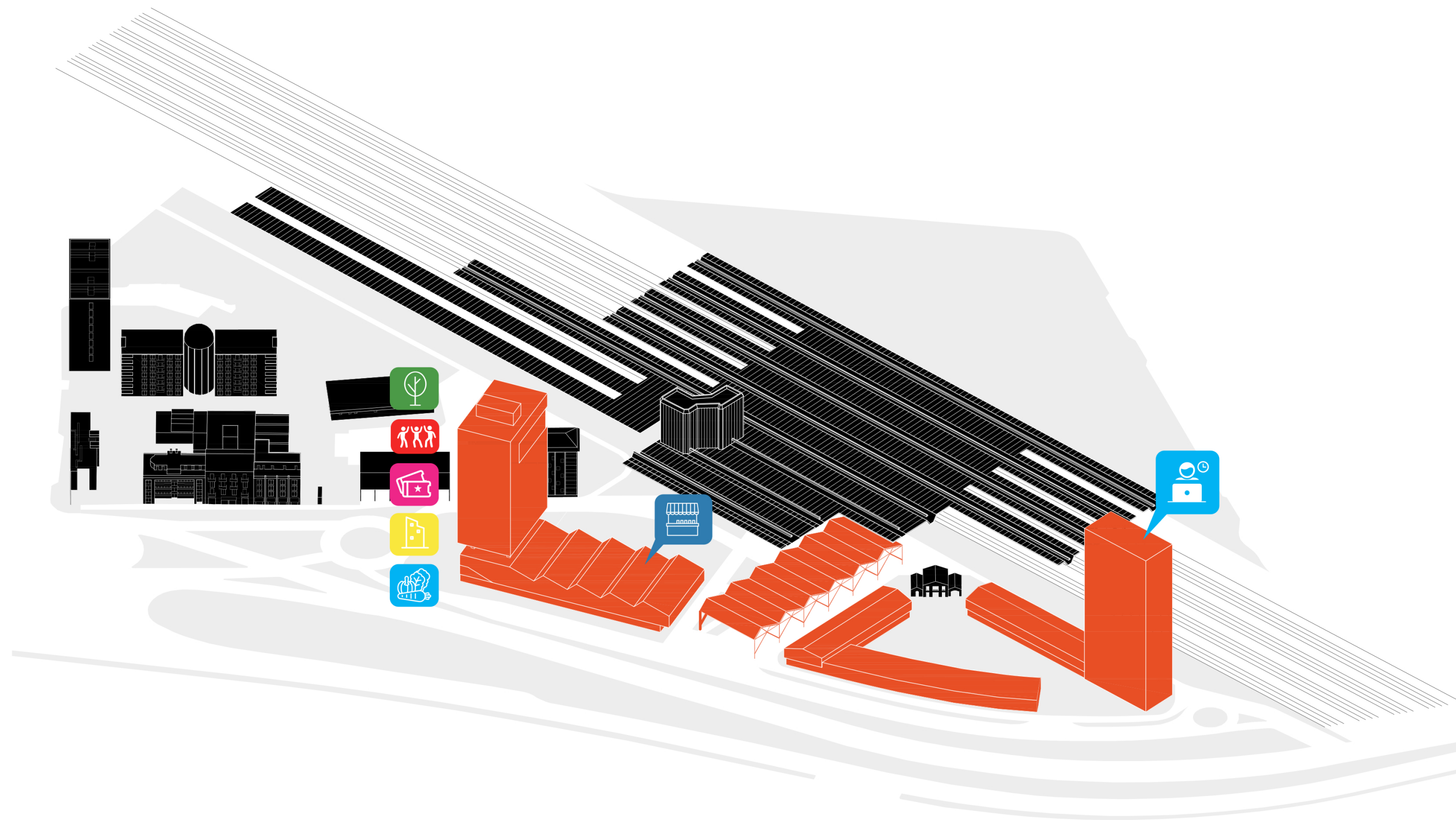
## PIAZZA DELLA STAZIONE





# PROCESSO PROGETTUALE

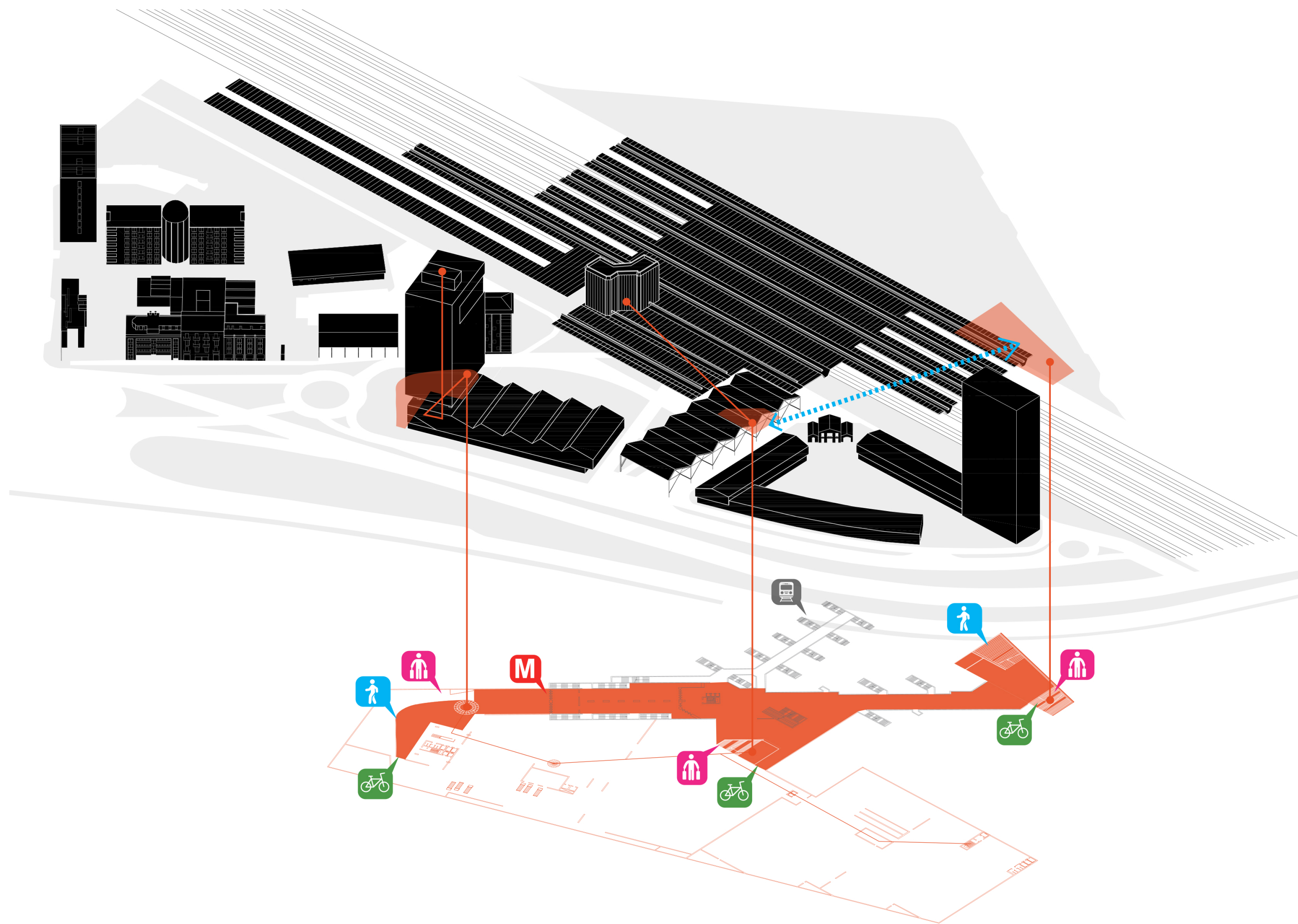
NUOVE  
EDIFICAZIONI





# PROCESSO PROGETTUALE

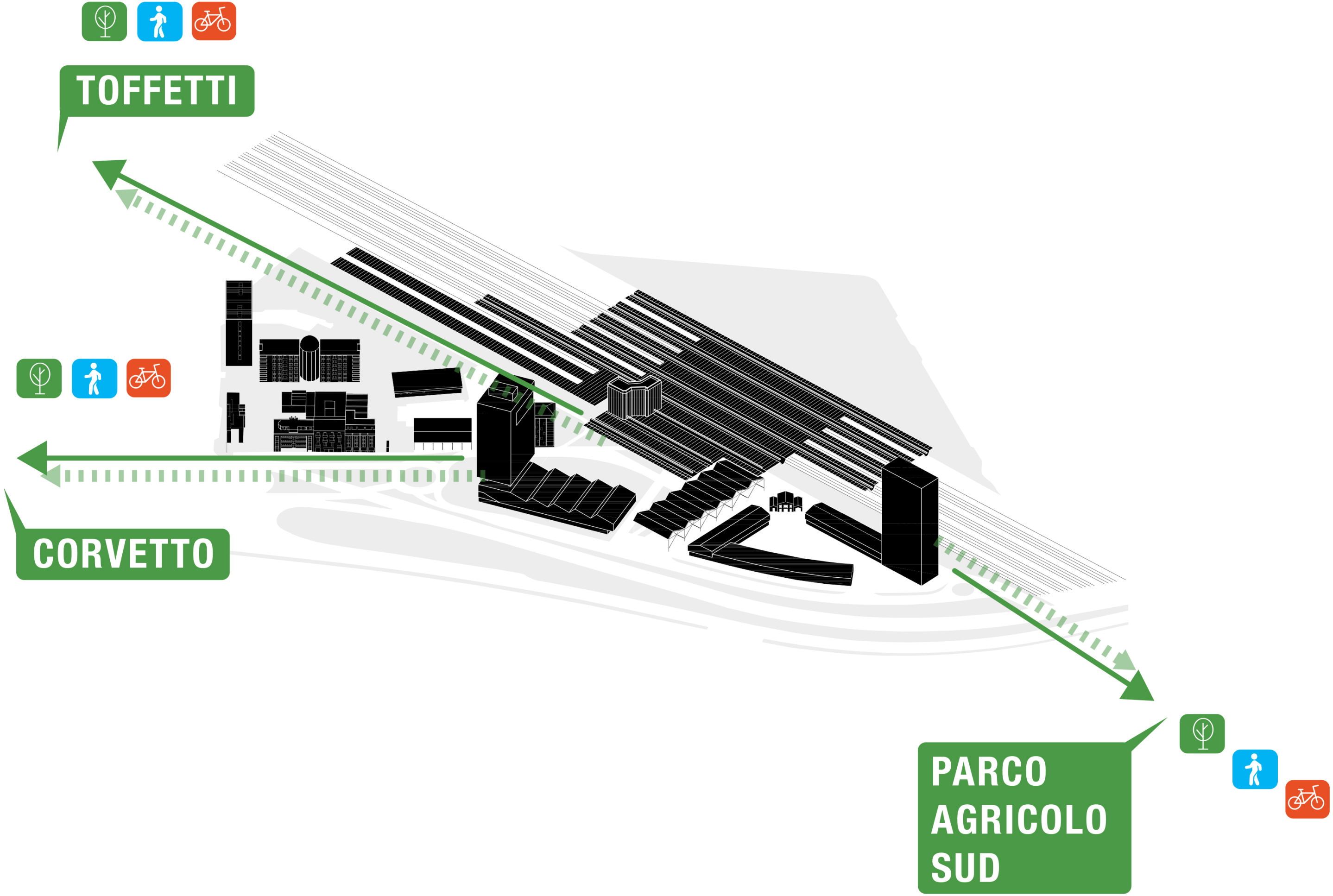
RACCORDO  
PUBBLICO  
IPOGEO



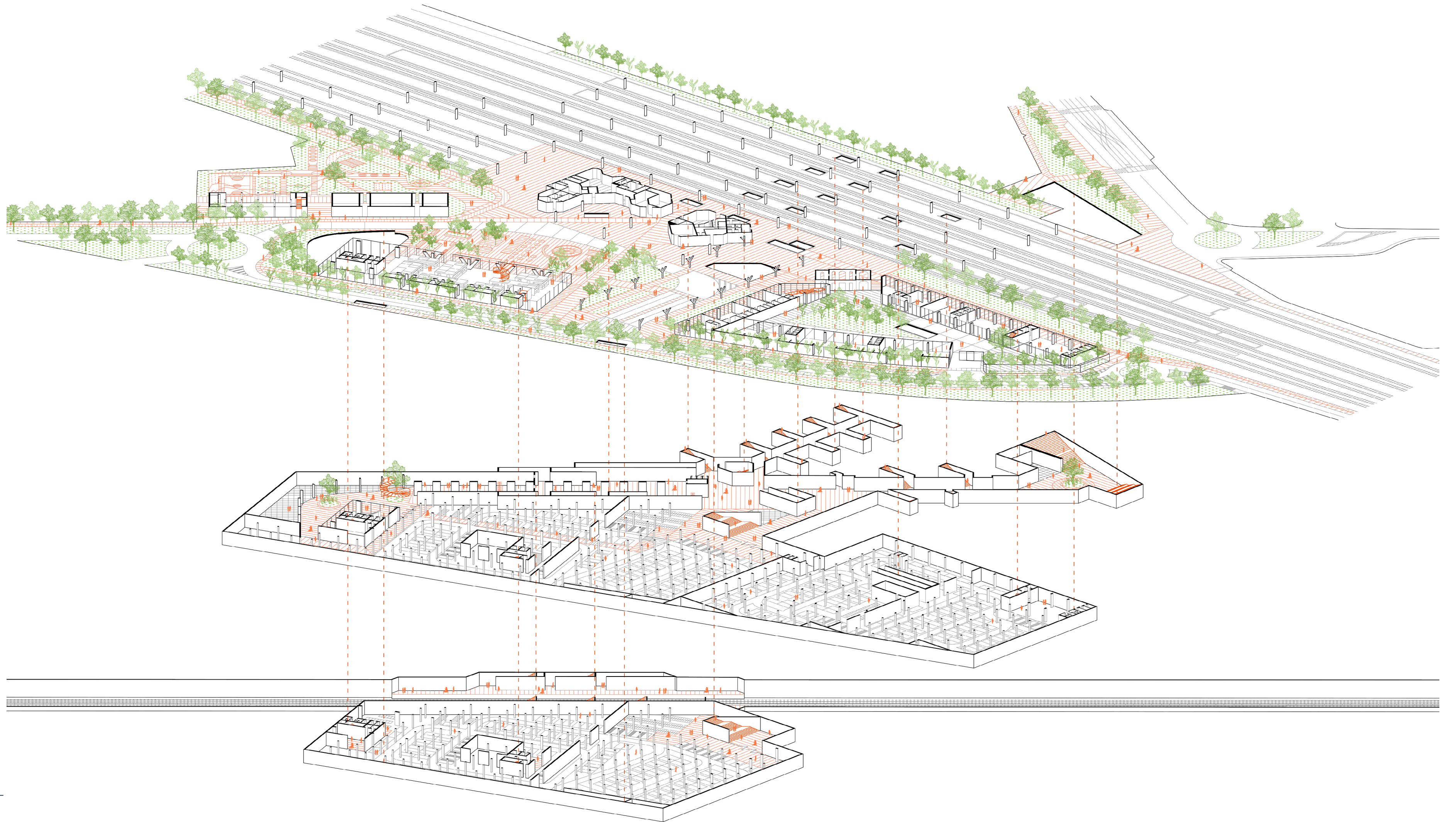


# PROCESSO PROGETTUALE

COLLEGAMENTI  
VERDI  
CICLOPEDONALI



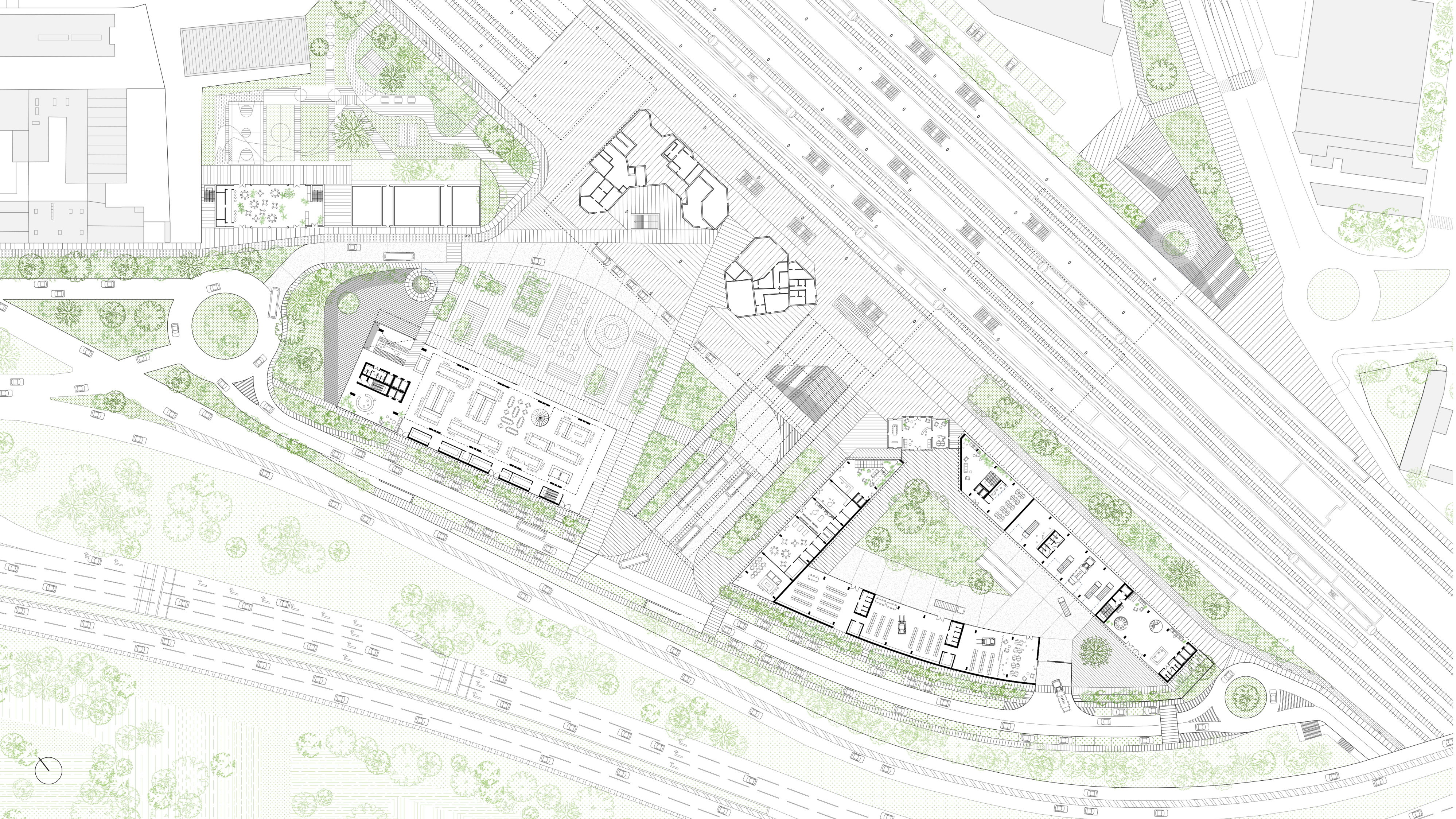








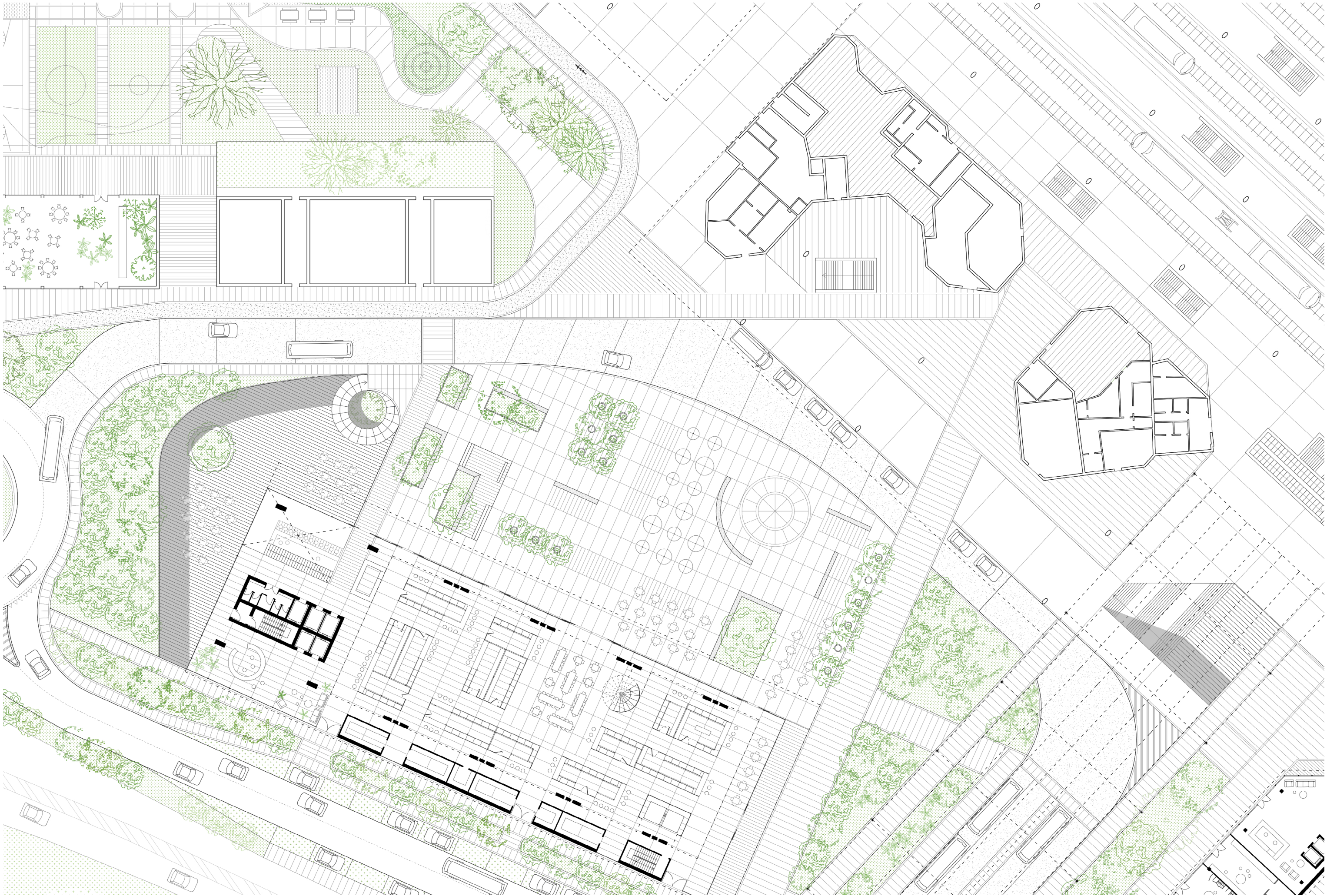






# PLANIMETRIA

## PIAZZA DELLA STAZIONE





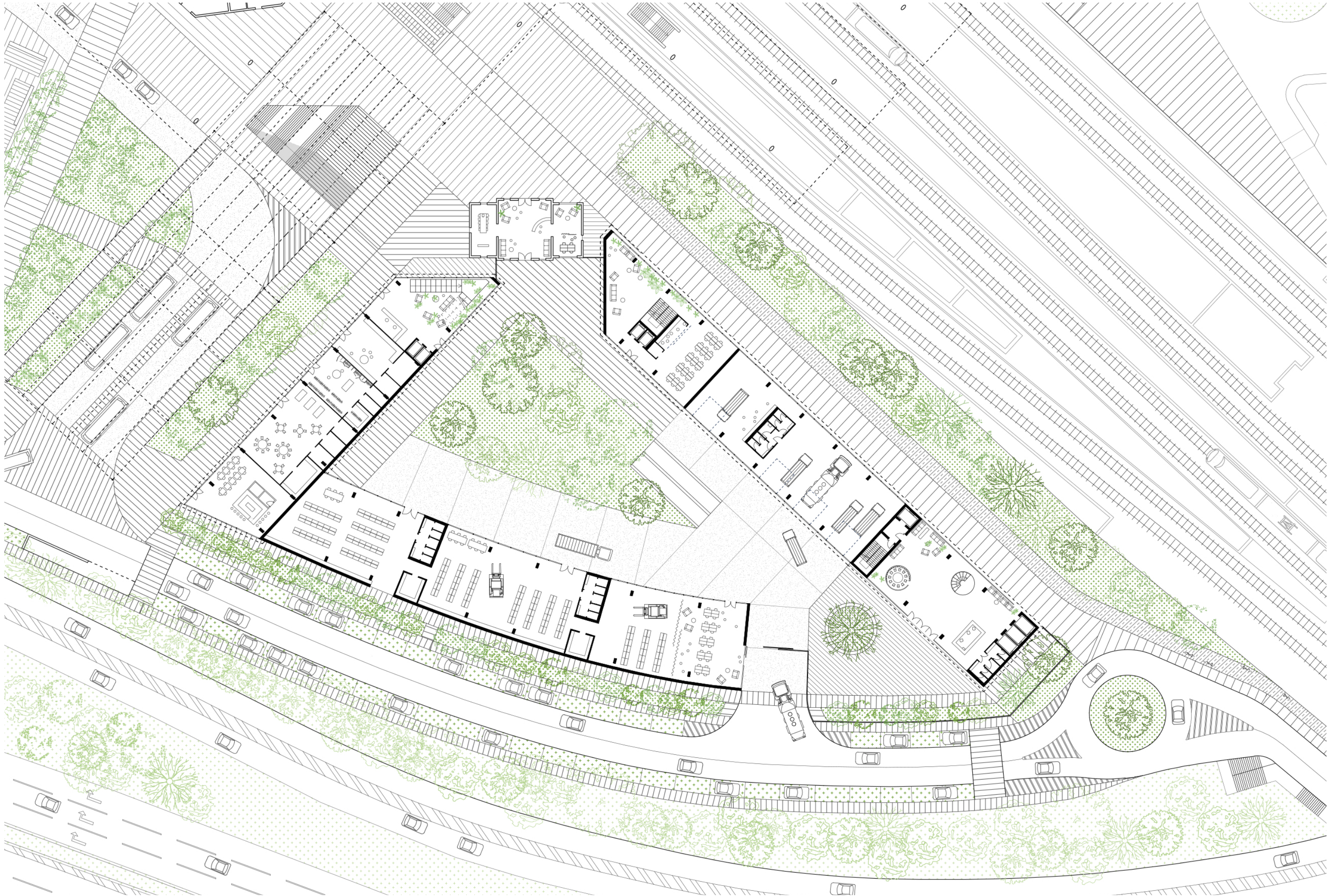


MAME

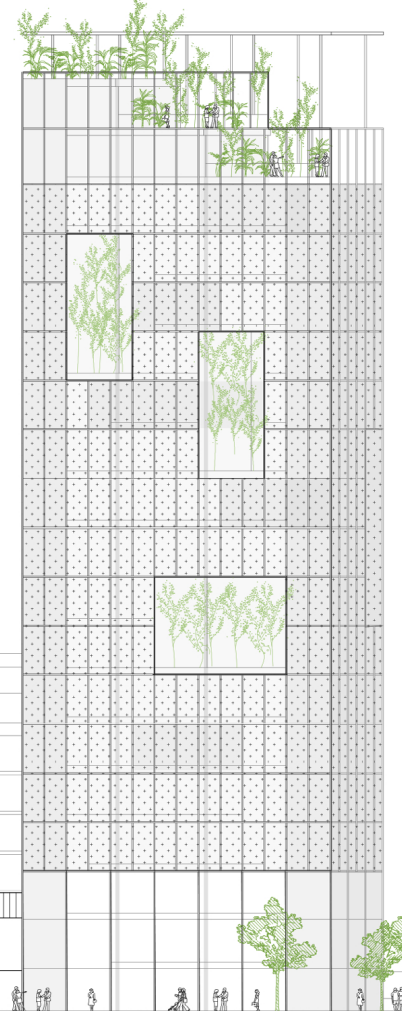
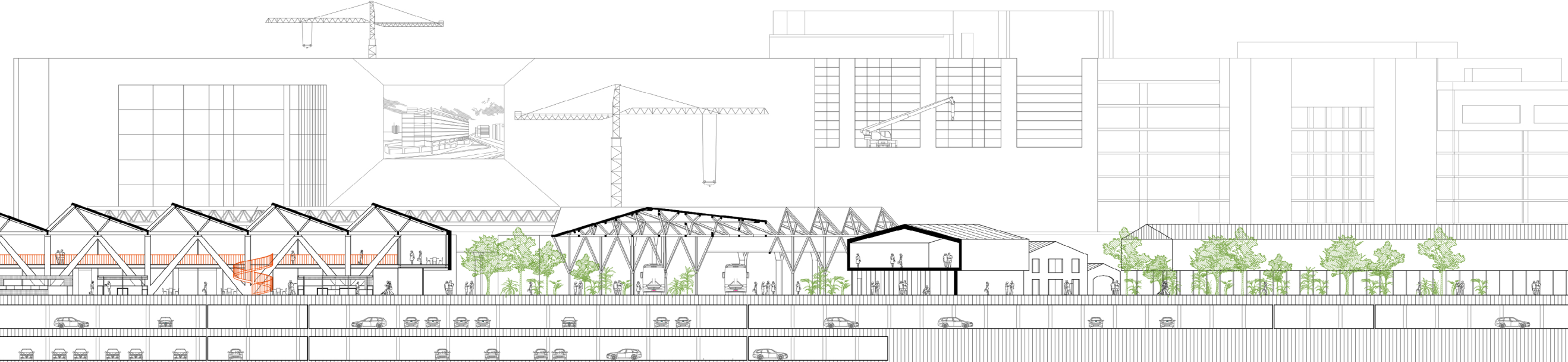
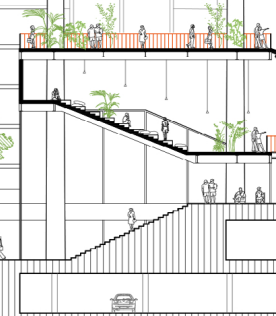
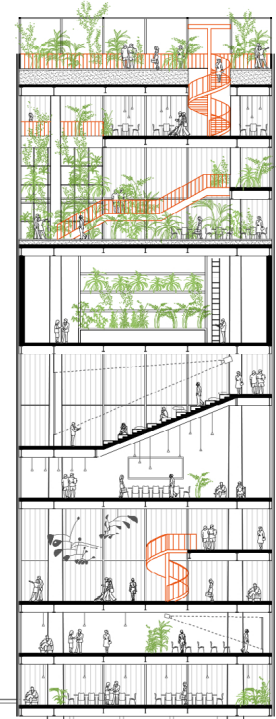
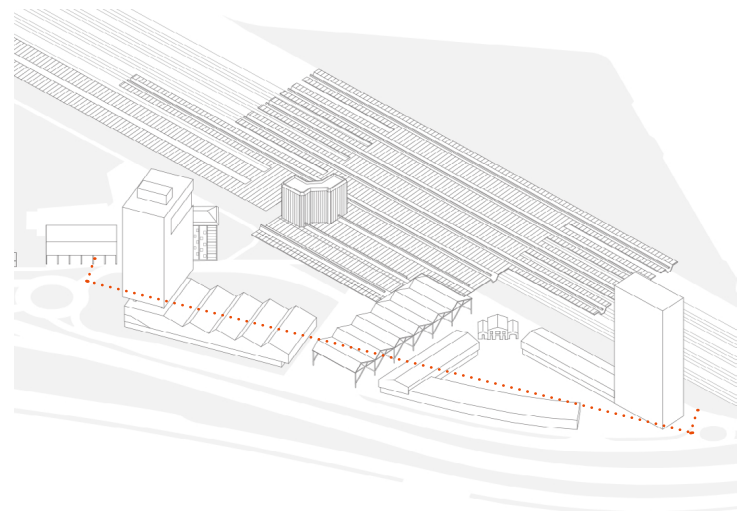


# PLANIMETRIA

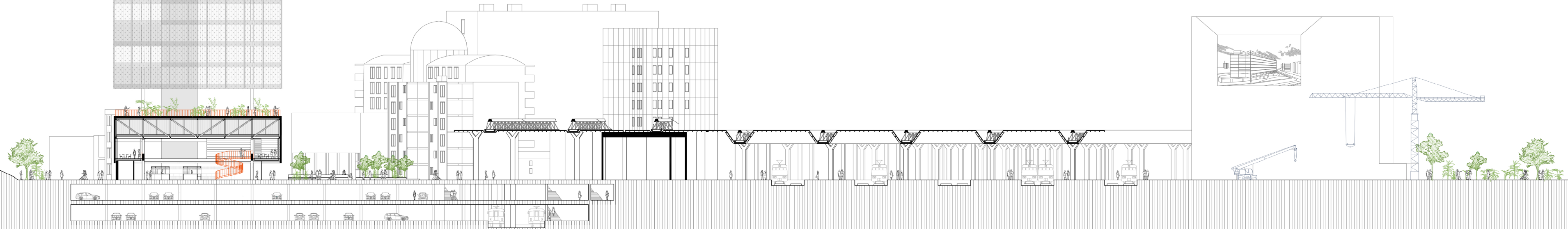
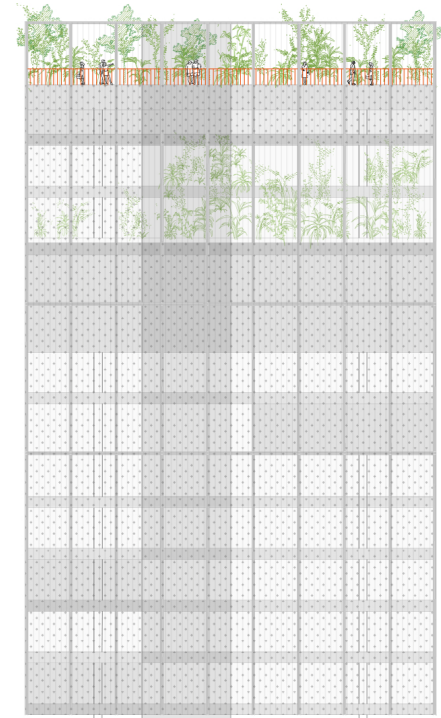
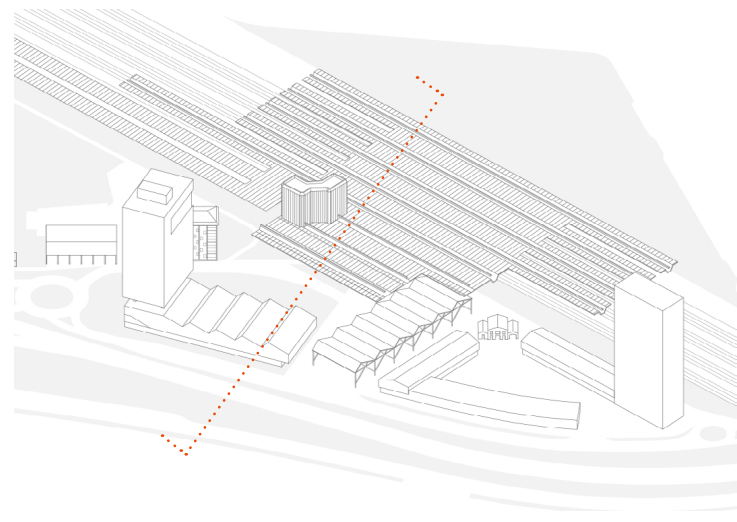
COMPLESSO  
ANAS





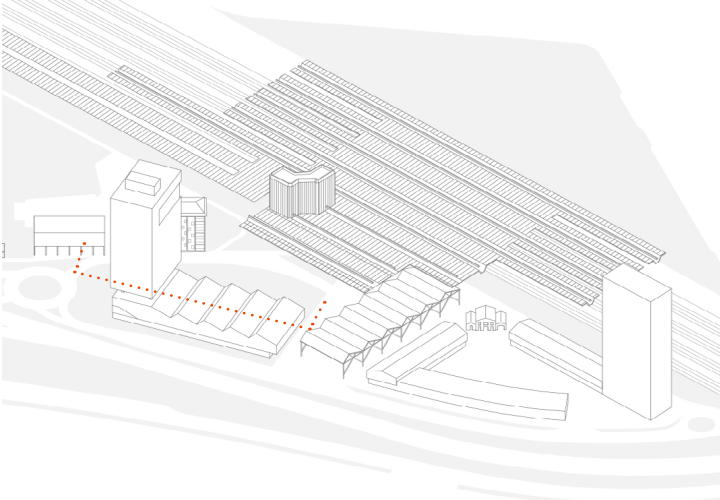








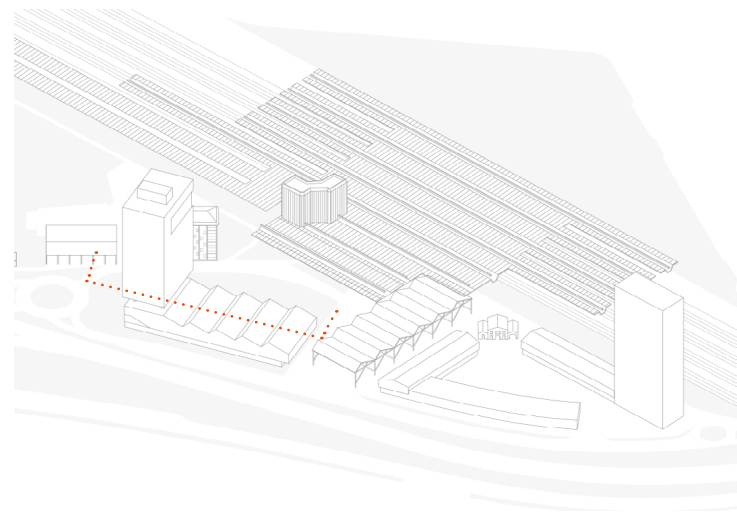
SEZIONE





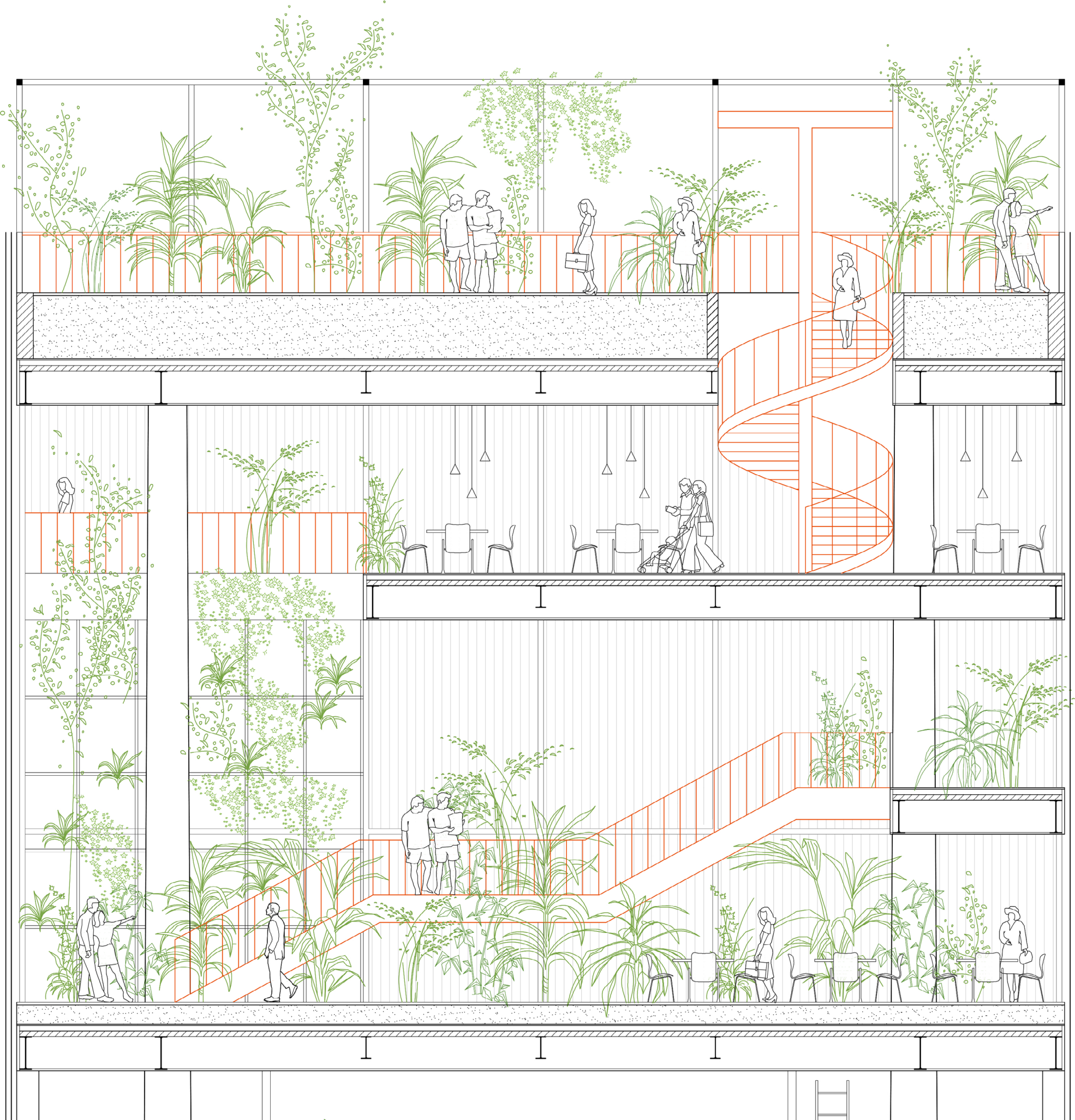
**MAMe**

Mercato Agricolo  
Metropolitano



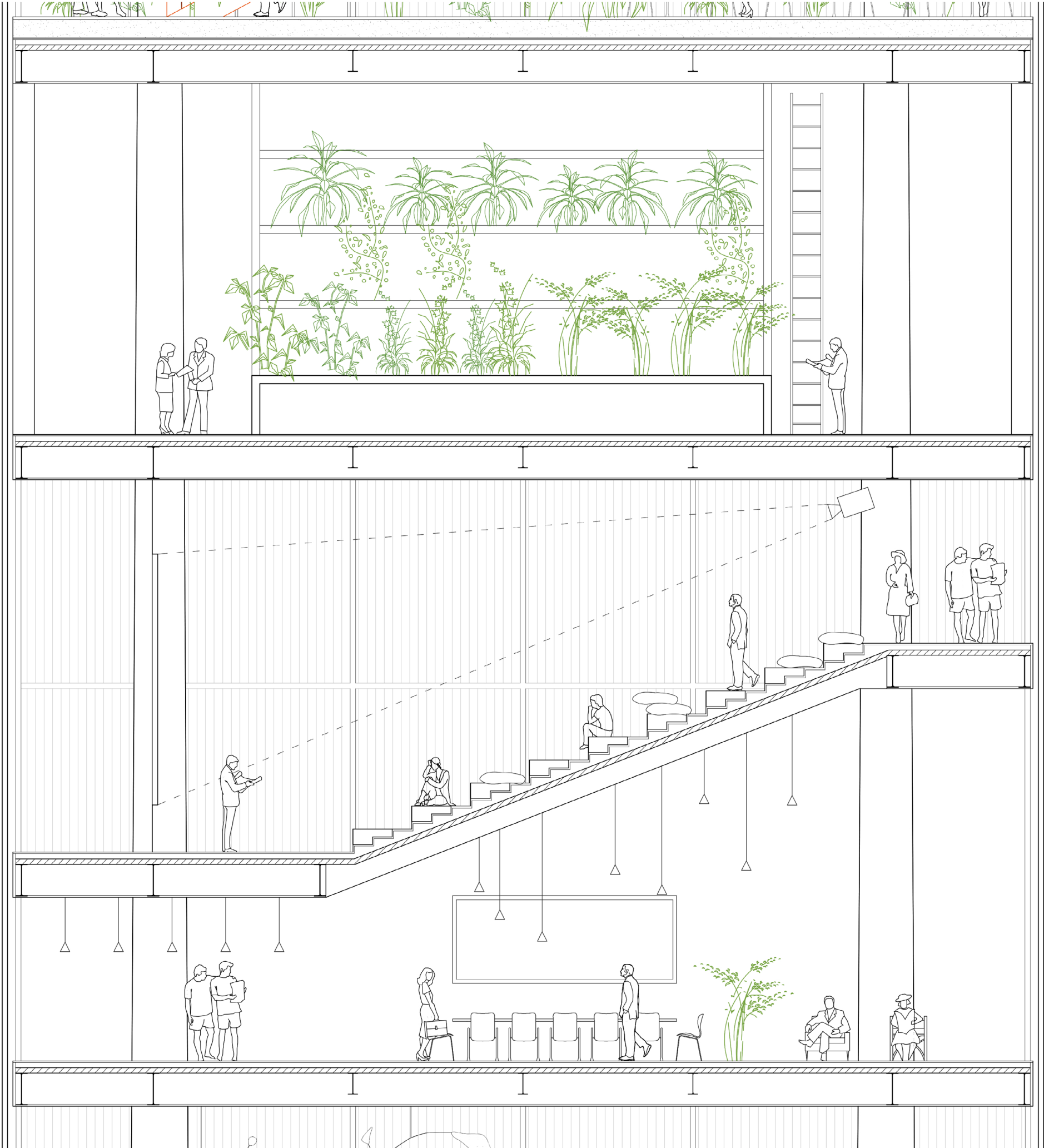


TERRAZZA /  
RISTORANTE /  
SERRA



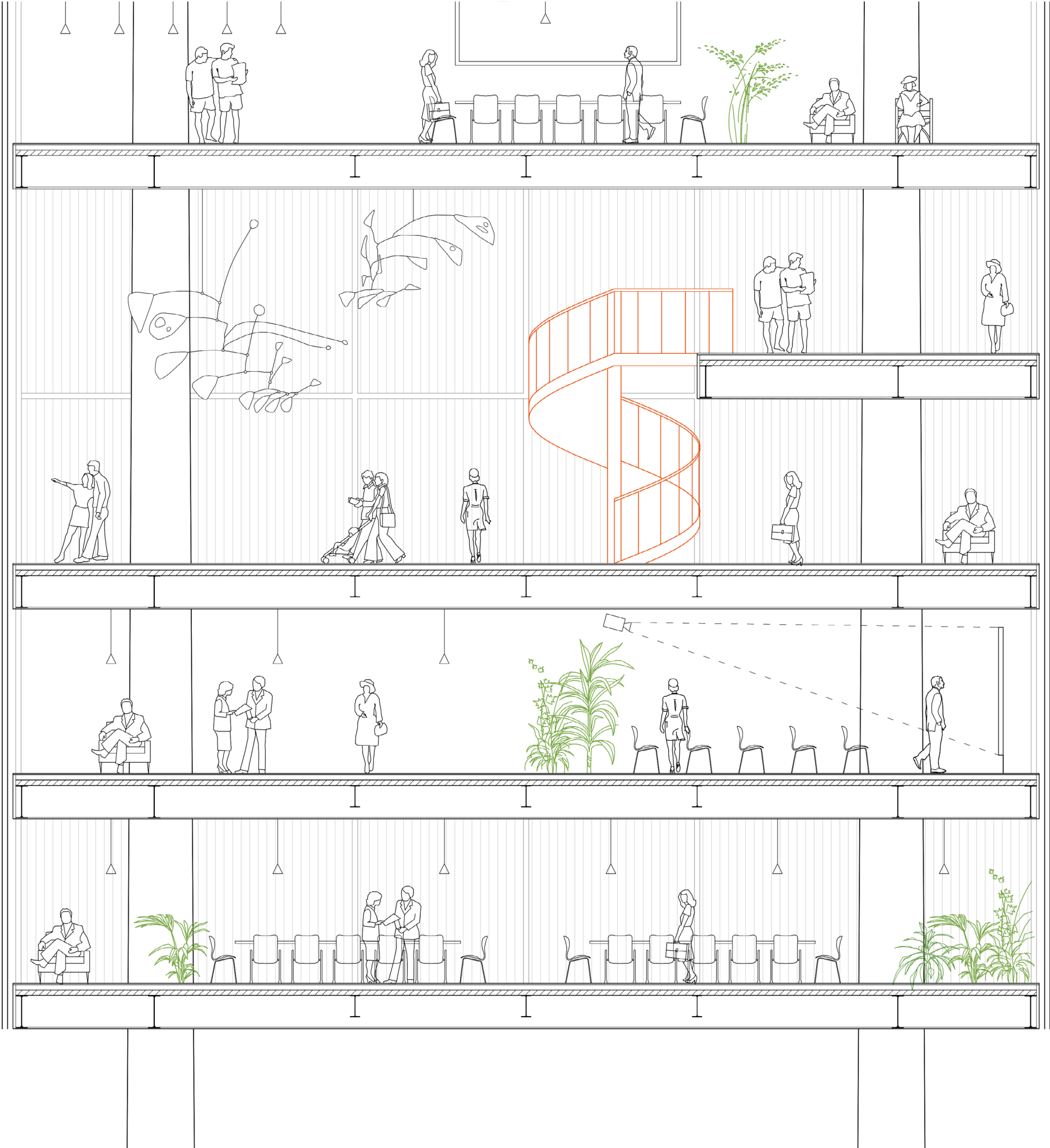


COLTIVAZIONE  
ACQUAPONICA /  
AUDITORIUM /  
UFFICI





SALA  
ESPOSIZIONI /  
UFFICI /  
LABORATORI

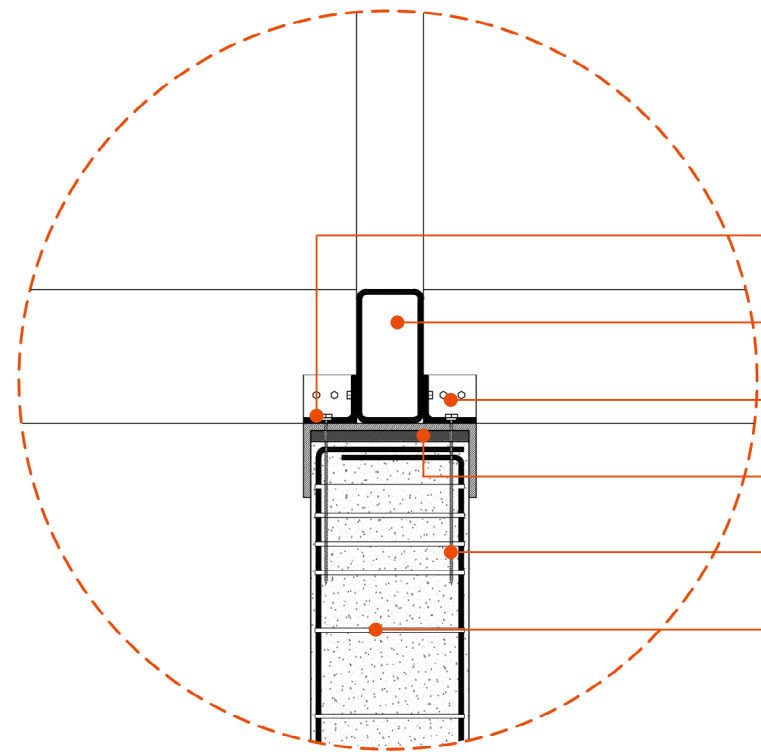
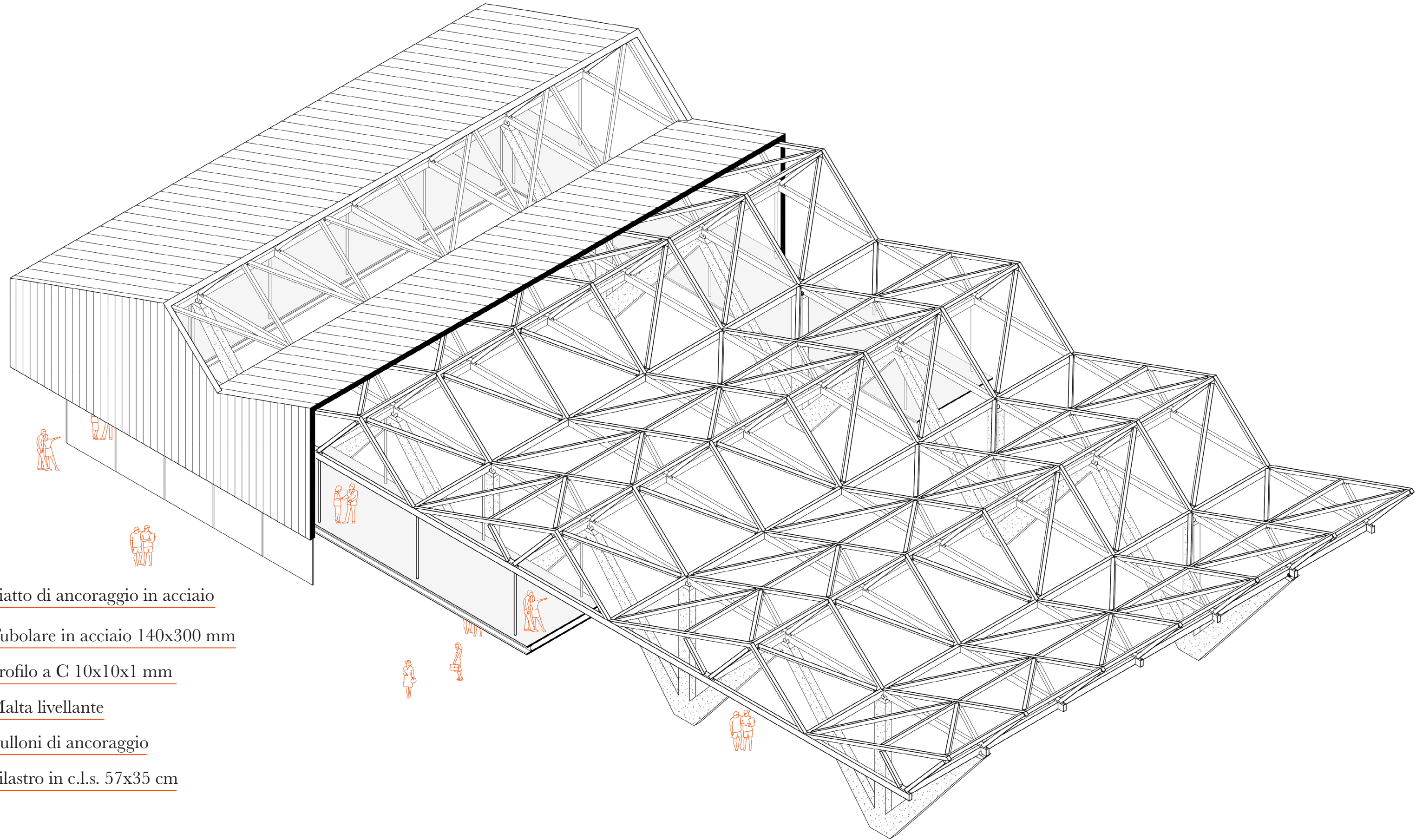
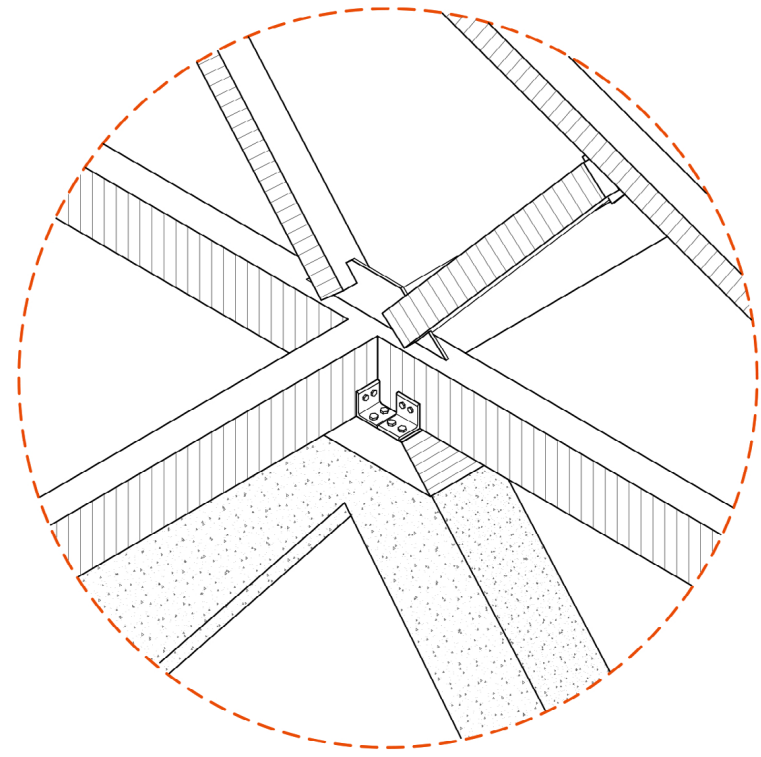








# STRUTTURA DEL MERCATO



Piatto di ancoraggio in acciaio

Tubolare in acciaio 140x300 mm

Profilo a C 10x10x1 mm

Malta livellante

Bulloni di ancoraggio

Pilastro in c.l.s. 57x35 cm



