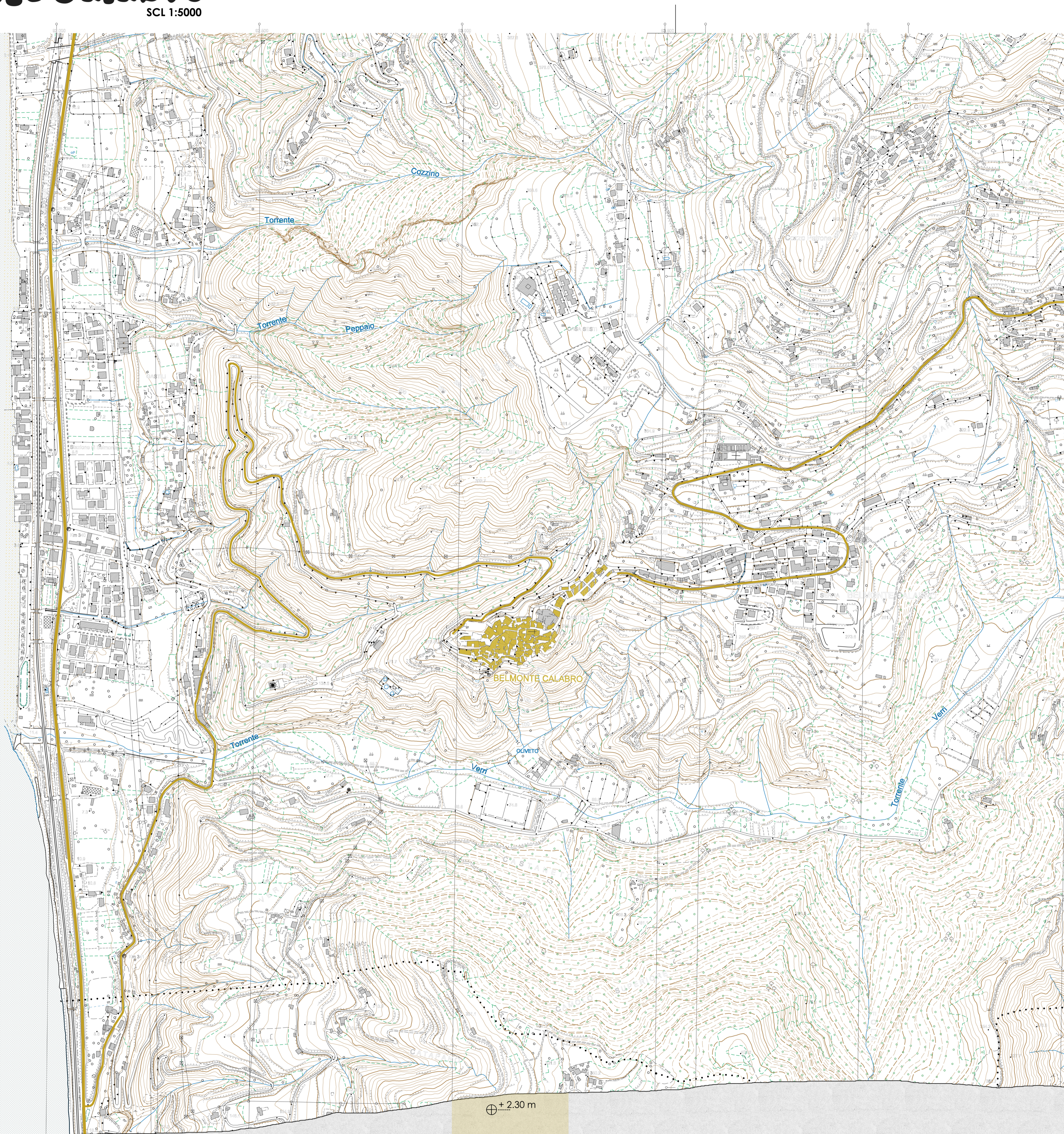


# Belmonte Calabro

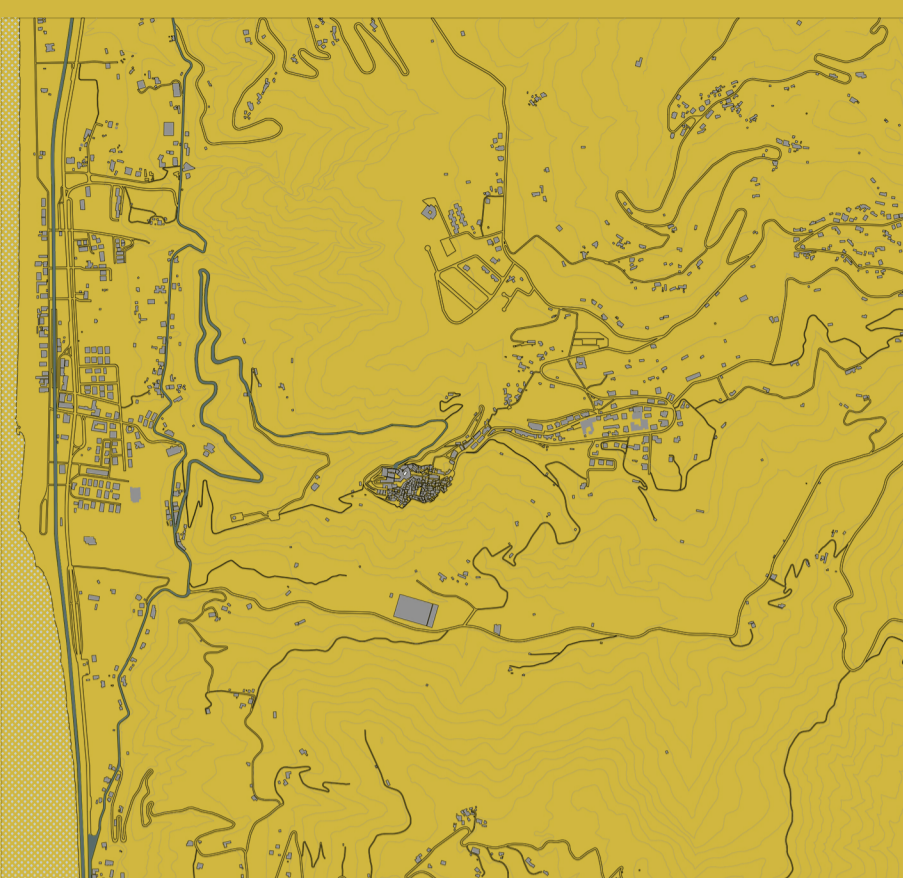
SCL 1:5000

Tyrrhenian Sea



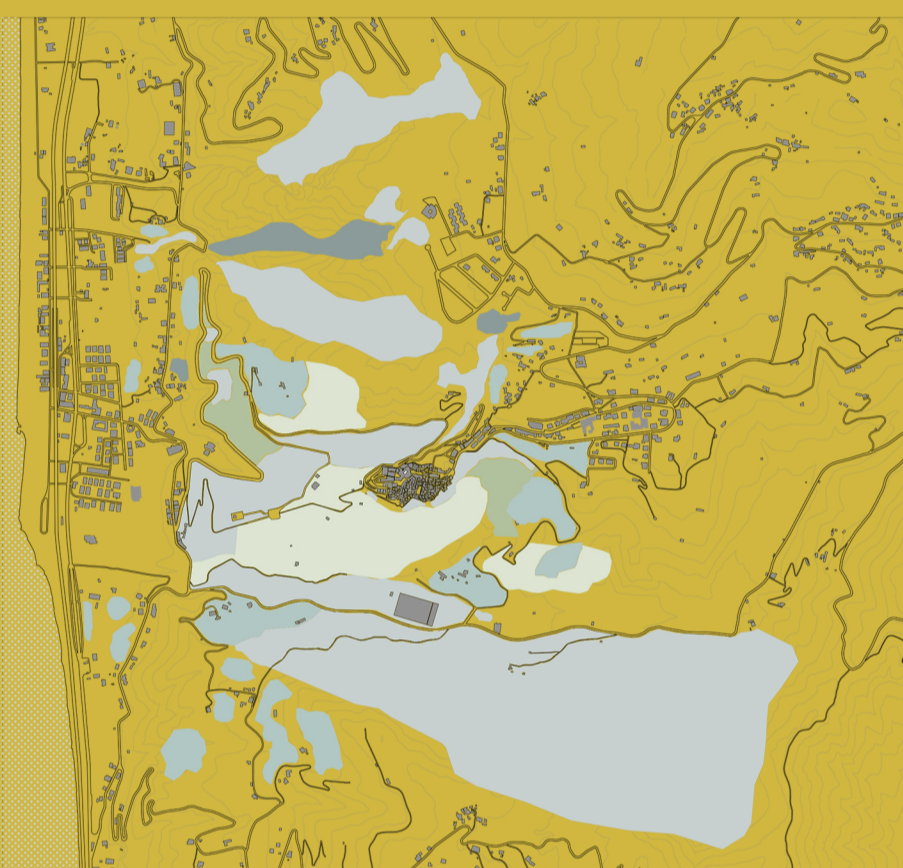
± 2.30 m

CONNECT



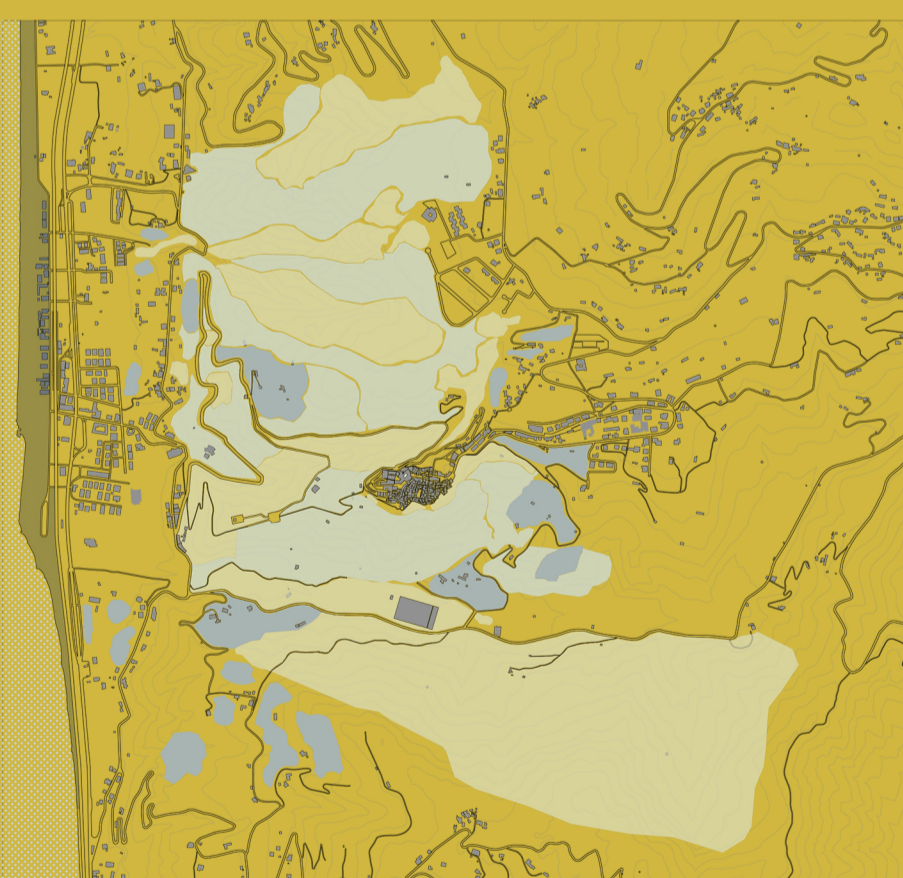
Main connection

VEGETATION



- Dense deciduous forest
- Uncultivated bush
- Olive Grove
- Dense cone forest
- Mediterranean bush

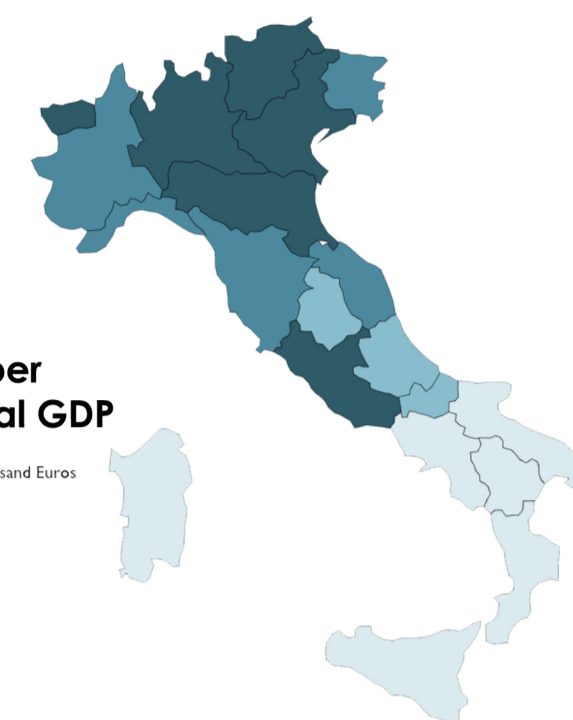
LAND USE



- Settlements
- Forest
- Cultivated Land
- Uncultivated Land
- Sea Front

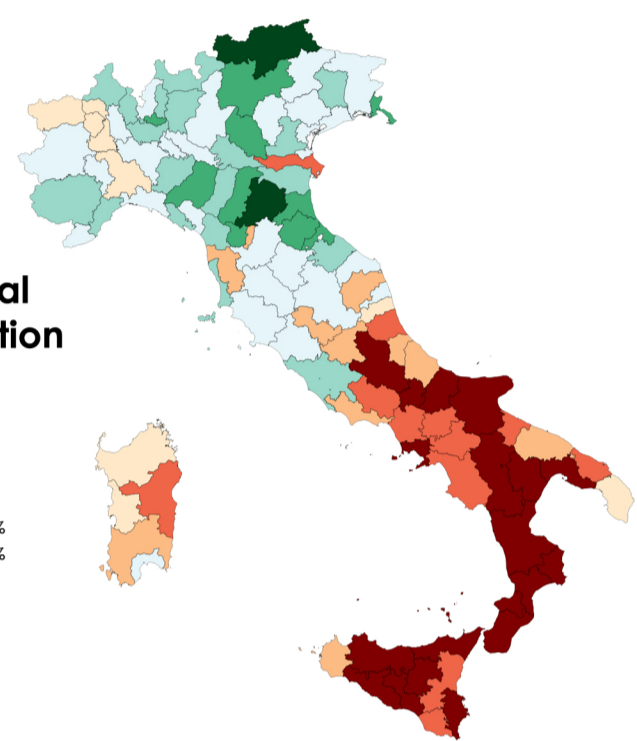
## Italy per Capital GDP

- 30-35 Thousand Euro
- 25-30 Th. E
- 20-25 Th. E
- 15-20 Th. E

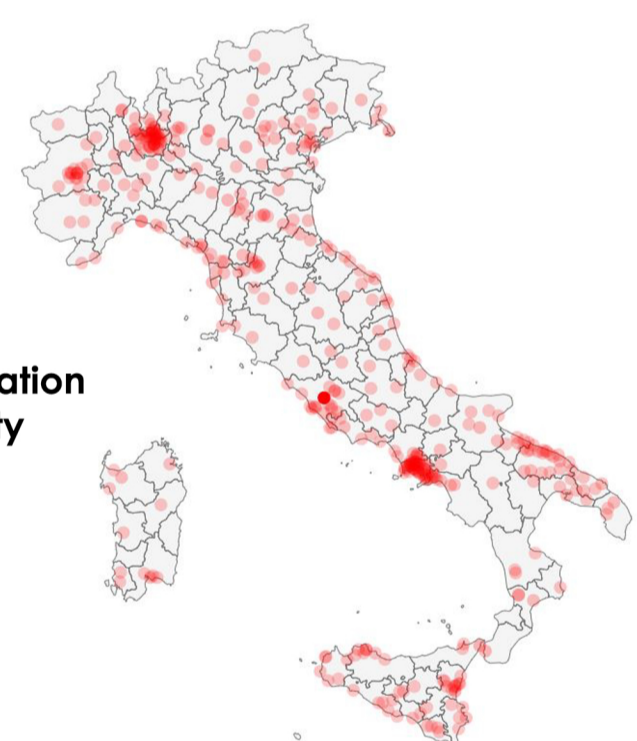


## Internal Migration

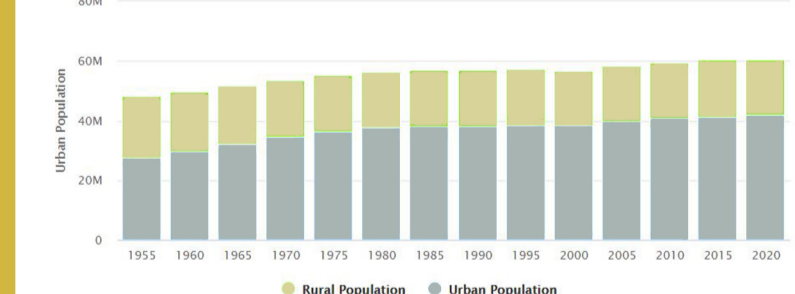
- > 3%
- 2-3%
- 1-2%
- 0-1%
- 0-(-1)%
- (-1)-(-2)%
- (-2)-(-3)%
- > (-3)%



## Population Density



## Urban vs. Rural Population in Italy



Legend

- |  |   |   |  |  |
|--|---|---|--|--|
| <b>Railways and Mobility</b><br>Autonomous traction track<br>Electric traction track<br>Track in construction<br>Non-rail track<br>Car way, Highway<br>Main road<br>Car way, Way in<br>Main road<br>RSP (parked) street<br>Main road<br>Soft pathway<br>Hard pathway | <b>Buildings and construction</b><br>Residential Industrial<br>Shelter Canopy<br>Ruins Silo<br>Church - Chapel<br>Groves<br>Wall Network<br>Retaining wall<br>Aqueduct<br>Oil pipeline<br>Pipeline<br>Electric line<br>Hydroelectric central<br>Cadway<br>Chaffit | <b>Crops and Forests</b><br>Vineyard<br>Oliveyard<br>Citrus Orchard<br>Dense coniferous forest<br>Dense deciduous forest<br>Mediterranean Bush<br>Albes<br>Pinus<br>Castanea<br>Fagus<br>Cupressus<br>Mediterranean bush<br>Acacia<br>Eucalyptus<br>Isolated tree<br>Arable<br>Cane<br>Uncultivated | <b>Hydrography</b><br>Coast line<br>River Creek<br>Canal<br>Lake<br>Beach<br>Dam | <b>Orography</b><br>Level curve (25m)<br>Level curve (5m)<br>Level curve (1m)<br>Cliff Artificial cliff<br>Water Mill<br>Cave Rock |
|--|---|---|--|--|

Regional Section 1:5000