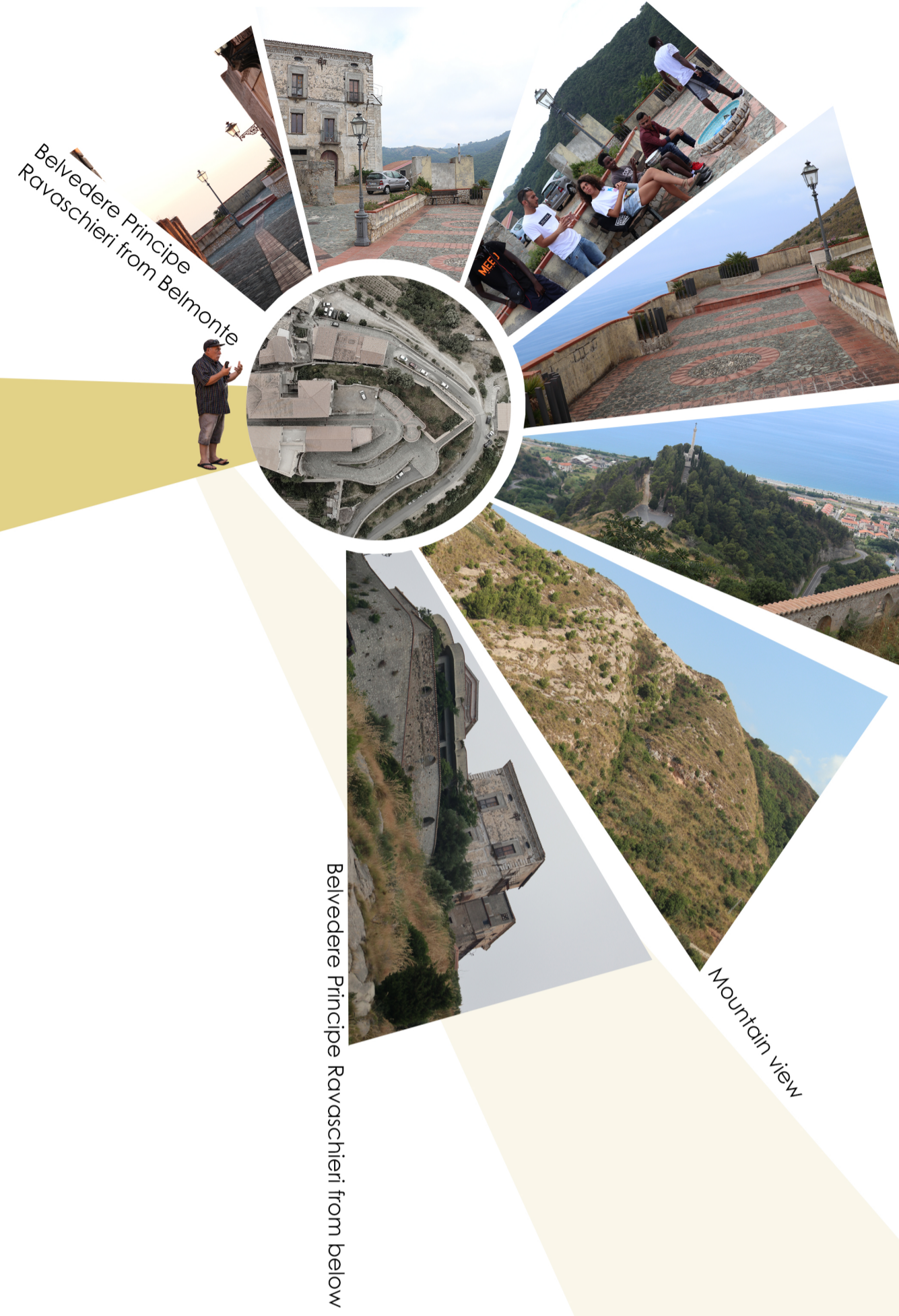


# VIEWS ANALYSIS

## BELVEDERE PRINCIPE RAVASCHIERI

The Belvedere is characterized for being the entrance point for Belmonte, from where is admirable dominant landscape of the Tyrrhenian sea and how it slowly merges with a mountain landscape.

On the other side of the belvedere the limit is conformed by the Palazzo Ravaschieri, while in the lower part it can be seen the remaining historical walls that used to be the limit of the village.



Inside Belvedere Principe Ravaschieri

Sea view

Mountain view

Belvedere Principe Ravaschieri from below

Palazzo Ravaschieri | Palazzo della torre

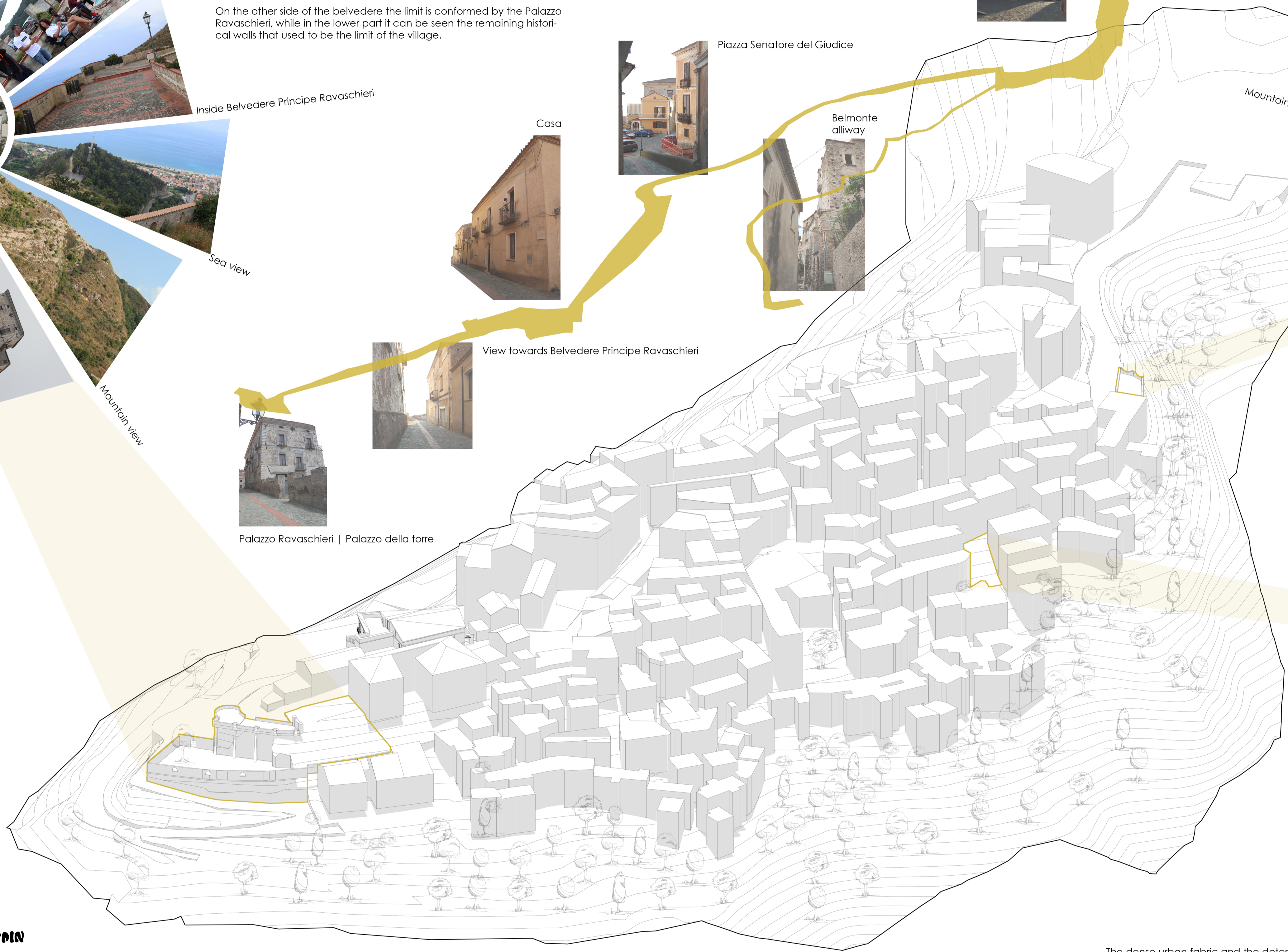
View towards Belvedere Principe Ravaschieri

Casa

Piazza Senatore del Giudice

Belmonte allway

Chiesa Santa Maria Assunta



## BELVEDERE PIETRO VELTRI

The Belvedere is in the center of the main activated axe along the village. It is surrounded by the library, main church and the main bar, making it a vital node to regain the value of lost public space and to regain the connection with its surrounding landscape due to the strong connection to the mountains.



Mountain view

Inside Belvedere Pietro Veltri

From mountain

View upper Belmonte

Mountain view

Users



View from above

Remaining walls

Passages

Nature taking over

## FROM MOUNTAIN - SEA - MOUNTAIN

While walking in the small allways inside Belmonte Calabro it is clearly recognizable the predominance and continuous transition from a mountain landscape into a sea one.

## SPACE AS RESULT OF TIME

The dense urban fabric and the deterioration of occupancy rate in Belmonte resulted in this informal space in-between buildings with the remains of some historical walls. Nature has taken over this space creating an interesting integration between playfulness and rigidity, old and new.

