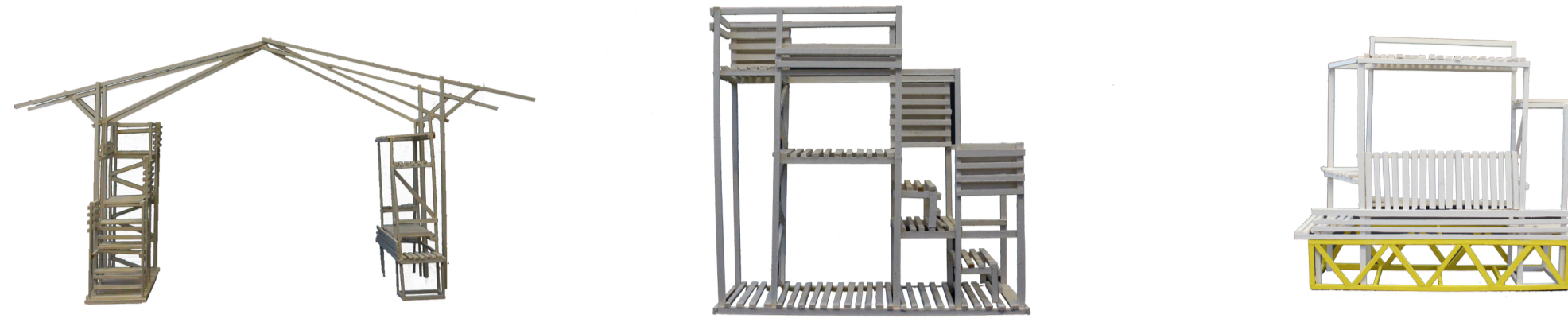


LIGHTER QUICKER CHEAPER.

Based on the principles of Placemaking, and together with the collective *La Rivoluzione Delle Seppie*, movable furnitures were constructed during summer and winter workshops, where with the involvement of local people, immigrants, teachers and students the public areas were reactivated as momentaneous scenarios for public participation.

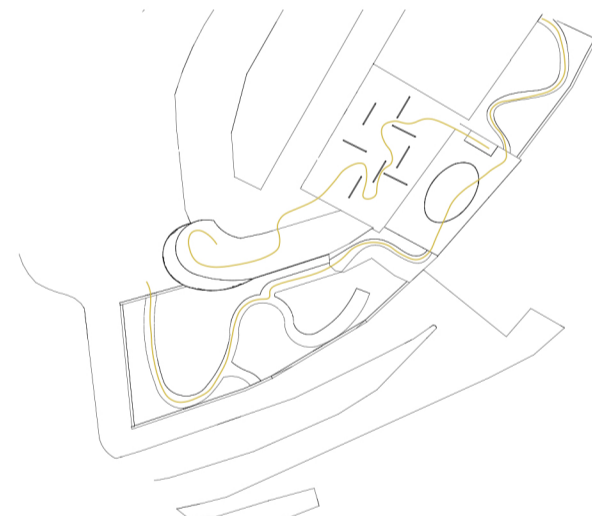
We propose the use of this movable and foldable elements as the furniture to be used in the spaces intervened, as well as the distribution of said furniture along the main axis in the village, working as a connecting element throughout the network.



PORTA AL MARE.

The intervention takes as a starting point the regeneration of the Belvedere Principe Rivaschieri, a node both historically and socially important.

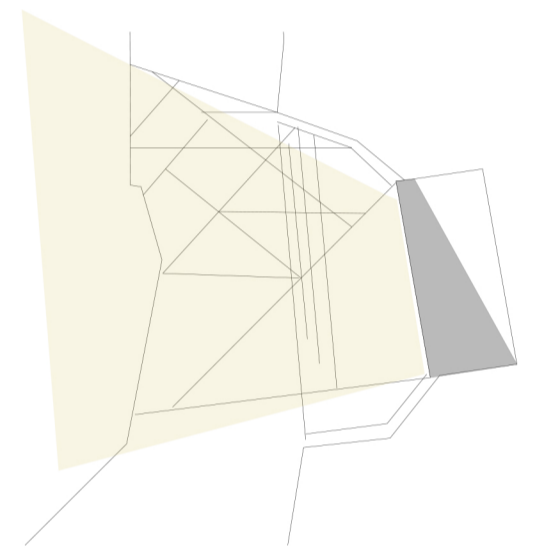
As part of the historical research it was determined the importance of the tower and the remaining surrounding wall that use to protect Belmonte Calabro. In the same matter, due to historical value present in the surrounding area of the belvedere with the Rivaschieri Palace and its garden, the project aim to create a dynamic environment for the public space and expand it as a learning area with information displayed throughout it and connecting different levels to finish in a secret garden rehabilitated and productive for its users.



POWER OF 10 +

Every place needs an amount of ten things to do in order to be an active one. Taking this into consideration, we understand the historical center of Belmonte Calabro as a whole place itself, hence the main idea is to create a network of public and semi-public areas for people from different cultures and backgrounds to gather and learn.

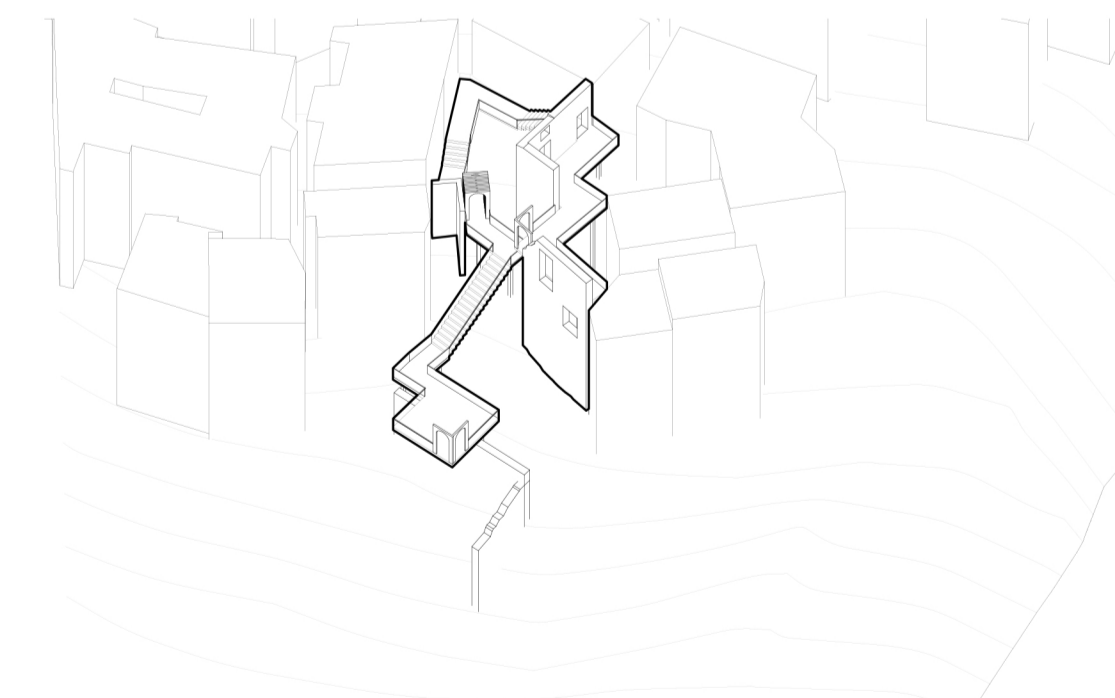
As part of this network is included the interventions already present in the area, and the regeneration of three underused public spaces.



PORTA A TERRA.

The design purpose for this public space is to regain the lost connection to the surrounding mountain landscape through a frame or "porta" to it, making people aware of the natural characteristics present on the site.

Also, surpressing the limits, and make it accesible to everybody, as well as playing with colors and levels as a playground for children due to its proximity with the public library.



TIMELESS.

This intervention represents the intersection between nature and dense urban fabric. History plays a key role in identifying a trajectory of new experiences to connect pre-existence and natural landscape.

Adapting with the strong existing topography of Belmonte Calabro, resulted in a playful approach to discover hidden spaces within the interlaced urban morphology.

