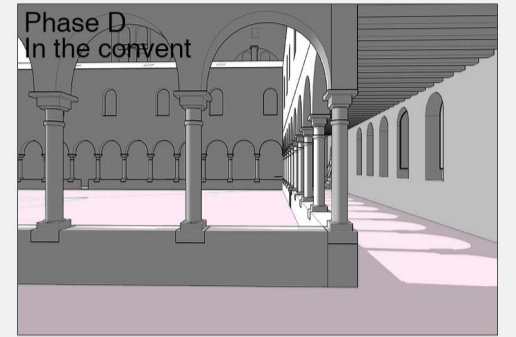
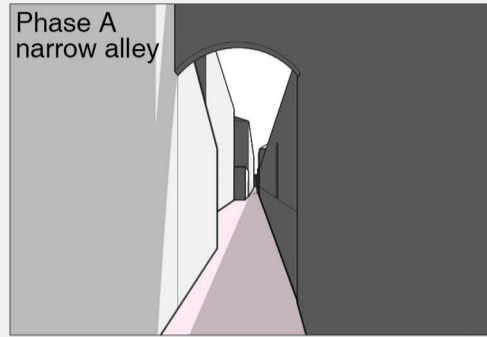
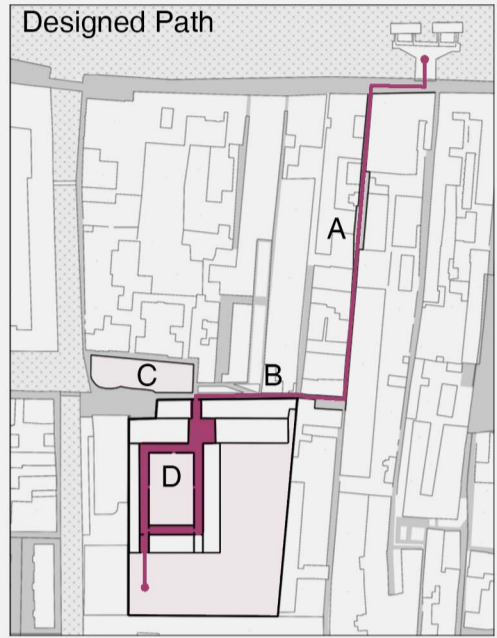


RED FRAGMENTS: A new dialogue between interiors and exteriors of Santi Cosma and Damiano former convent

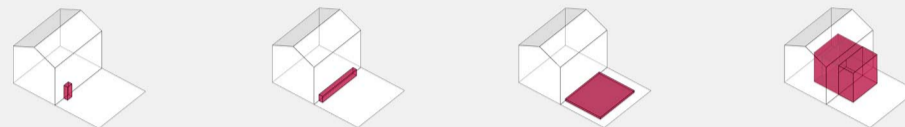
Artist-in-residence at Bevilacqua La Masa Foundation in Giudecca island, Venice

Fragmentation of The Intervention



Visitors' curiosity and expectation

The Level of Intervention



Narration of The Designed Path

Space Nodes and Element	Moving Direction and Important Feature	Sight Range	Spatial Experience	Type of Architectural Elements
1 Niche				
2 Niche and Expanded Road			Phase A: Moving forward by small clues along the alley 	
3 Two Niches				
4 Turning Corner			Turning point: Taking a break and changing direction indicated by the small plaza in the corner 	
5 Along the facade of the convent			Phase B: Moving along the facade with sight range gradually expanding 	
6 Campo			Phase C: Resting and doing various activities on the campo before entering the convent 	
7 The Hallway			Phase D 1: Arriving at the hallway as a starting point to enter different parts of the convent 	
8 Cloister and the central square			2: Reaching the climax of the space: the central square surrounded by the cloister 	
9 Garden			3: Enjoying the beauty of the nature in the back garden 	

