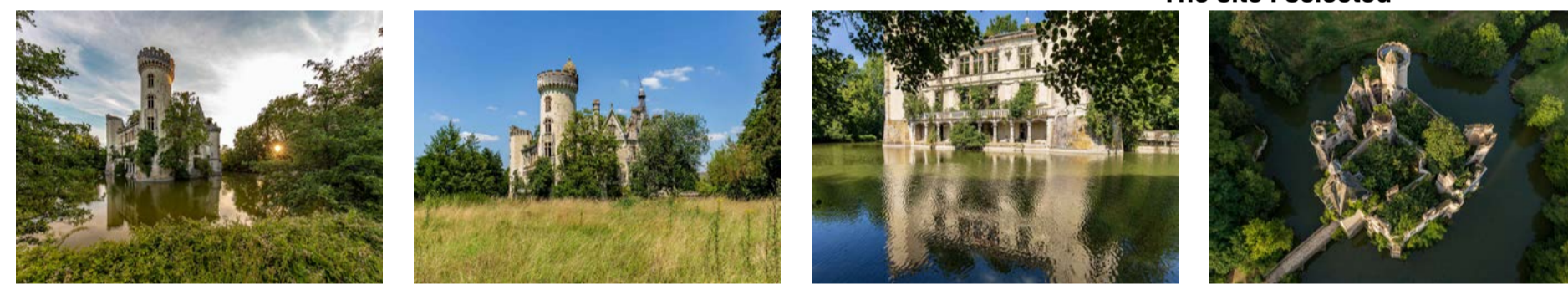
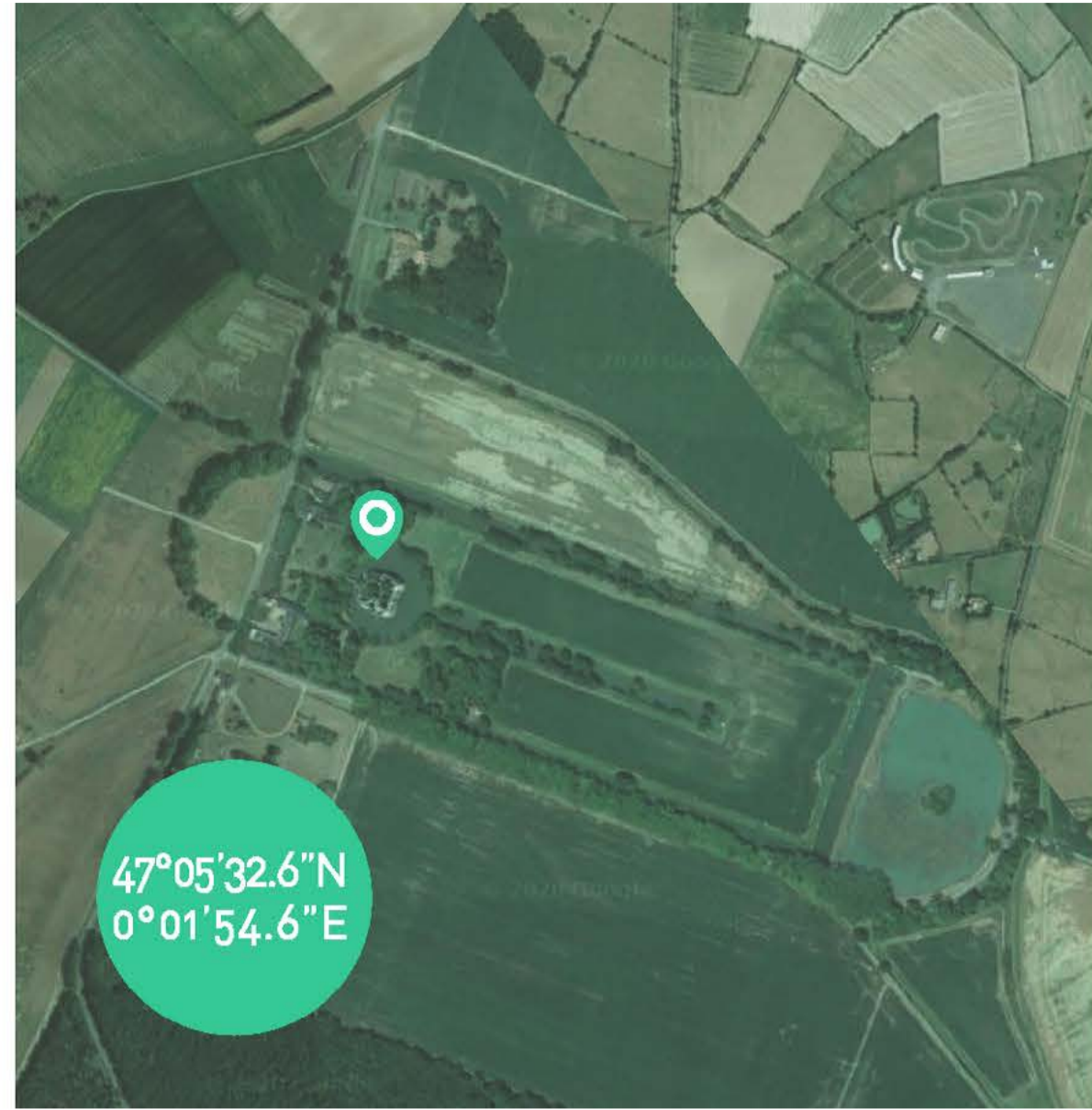


Ebaupinay: Mothe Chandeniers is the model of enchanted architecture. Differently, the castle of Ebaupinay is the materialization of the solemn and austere chivalrous rigor. Now, leaving the surrounding woods behind, the castle of Ebaupinay amazes visitors that walk through the valley. The castle stands out as a lonely and visible landmark against the flatness of the surrounding countryside. It is a unique view.

Mothe Chandeniers: Mothe Chandeniers is an ancient French castle. Recently, the surrounding park was added to the castle property. Rightly, it could be the perfect context for elegant and refined tree houses. The castle of Mothe Chandeniers is the archetype of the Romantic ruin. It is a neogothic chrysalis inhabited by trees and creepers. It is a moving and fascinating combination of human action and natural action. It is maybe one of the most remarkable ruins of France. Mothe Chandeniers is the materialization of enchanted castles and fairy tale stories.

Vibrac: the sound of streams, the creaking of wood and the wind in the distance, walking through the streets of Vibrac is a fascinating experience. It is a patchwork of lands surrounded by the numerous branches of the Charente River. The topography looks like an archipelago rather than a rural area. They are a combination of small islands divided by creeks and rivers that make the agricultural center of France lush and luxuriant.



The site I selected



Module 1: tree house module

- a. dimension: max. 65 m³
- b. floors: it is possible to design a layout on multiple floor
- c. vegetation: it is possible to include vegetation/trees in the module
- d. structure: the architecture can either cling to the tree or include additional supporting pilings
- e. required spaces: living area (table and chairs), sleeping area (2/3 beds), small storage area (suitcases/equipment), small toilets (WC, basin and shower, as far as the WC is concerned, architects can design solutions without the drain and/or pipes running to the ground)
- f. materials: as long as the volume is replicable and consistent with the requirements of the intervention on the tree, architects can use any finish or material
- g. electricity: it is possible to include electrical energy storage/generation devices



Module 2: module among trees (this module is formally consistent with the tree house module. However, it must be placed on pilings or on the ground)

- a. dimension: max. 100 m³
- b. floor: it is possible to design a layout on multiple floor
- c. vegetation: it is possible to include vegetation/trees in the module
- d. structure: the architecture does not need any specific foundation work. The module can be placed on the ground or on pilings (they can be used to install it in humid areas or on stretches of water) toilets (WC, basin, shower and/or bathtub)
- e. required spaces: living area (table and chairs), sleeping area (2/3 beds), small storage area (suitcases/equipment), small wellness area (30m² sauna);
- f. materials: as long as the volume is replicable and consistent with the requirements of the intervention
- g. electricity: it is possible to include electrical energy storage/generation devices



Tourist center:Receiving tourists, serving tourists, and cause minimal interference to the environment.

- a. floor: maximum can be three floor
- b. vegetation: it is possible, don't move vegetation/trees on the land
- c. required spaces: reception, exhibition area, restaurant or bar, shop space etc.
- d. view: Have a good view from the inside
- e. materials: Try to be related to the materials used in the tree house, can use the same or similar

The List of Programs



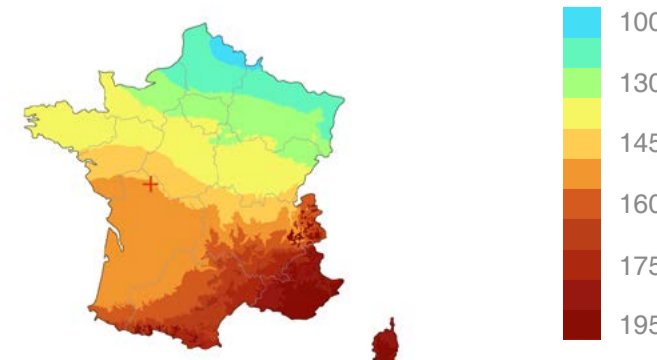
Location of France

France is located at the westernmost part of the European continent. The capital is Paris, Europe's largest cultural and financial center. Its native coastline extends from the Mediterranean Sea to the English Channel. The entire country is shaped like a hexagon. There are 18 regions across the country as well as overseas territories. Our base is located on the plains of New Aquitaine along the west coast.

The red crossing on the map is Mothe Chandeniers



Location of New Aquitaine

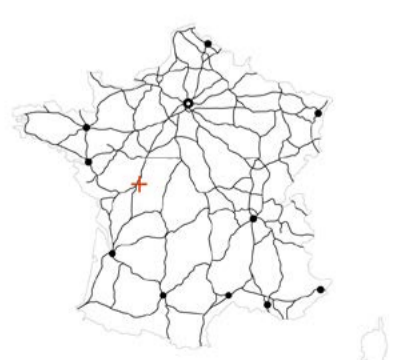


Solar radiation



Land Use Map

- Forest
- Grassland
- Crops
- Grassland & Crops
- Market Gardening
- Vineyard
- Olives
- Water



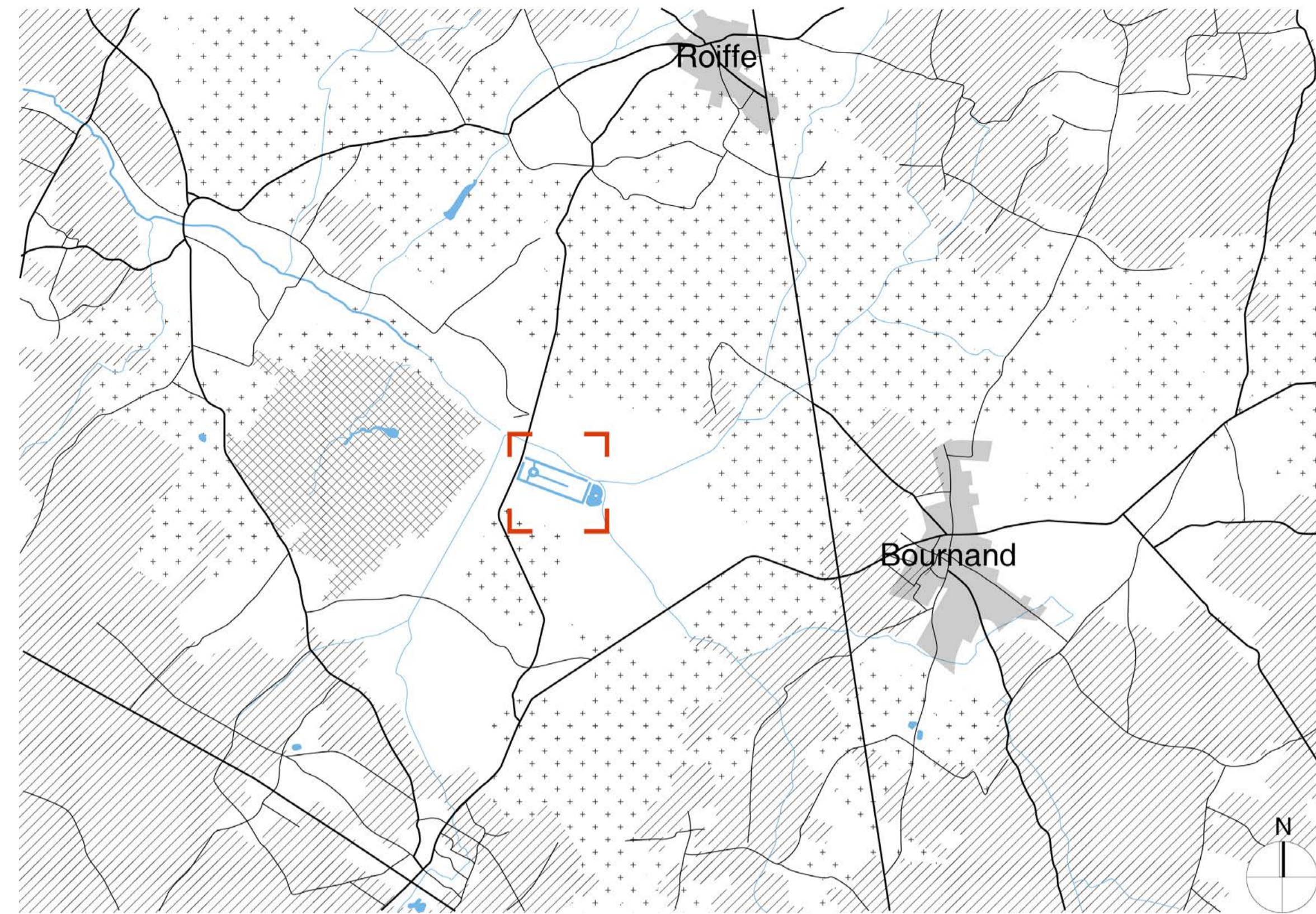
Road Network

- Paris - the capital of France
- The main cities in France
- The main road network in France
- The red crossing is Mothe Chandeniers

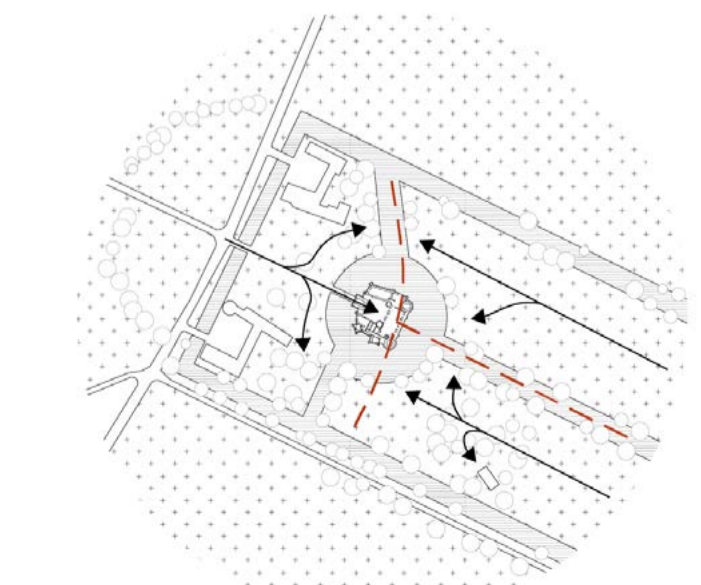
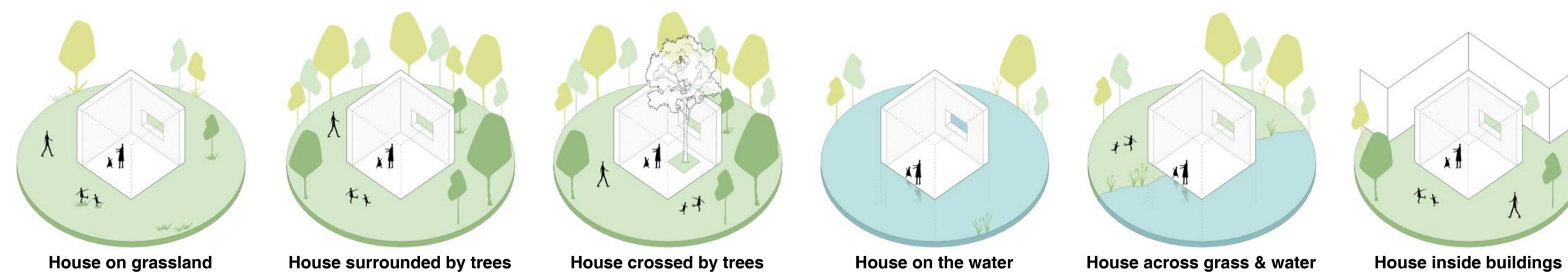
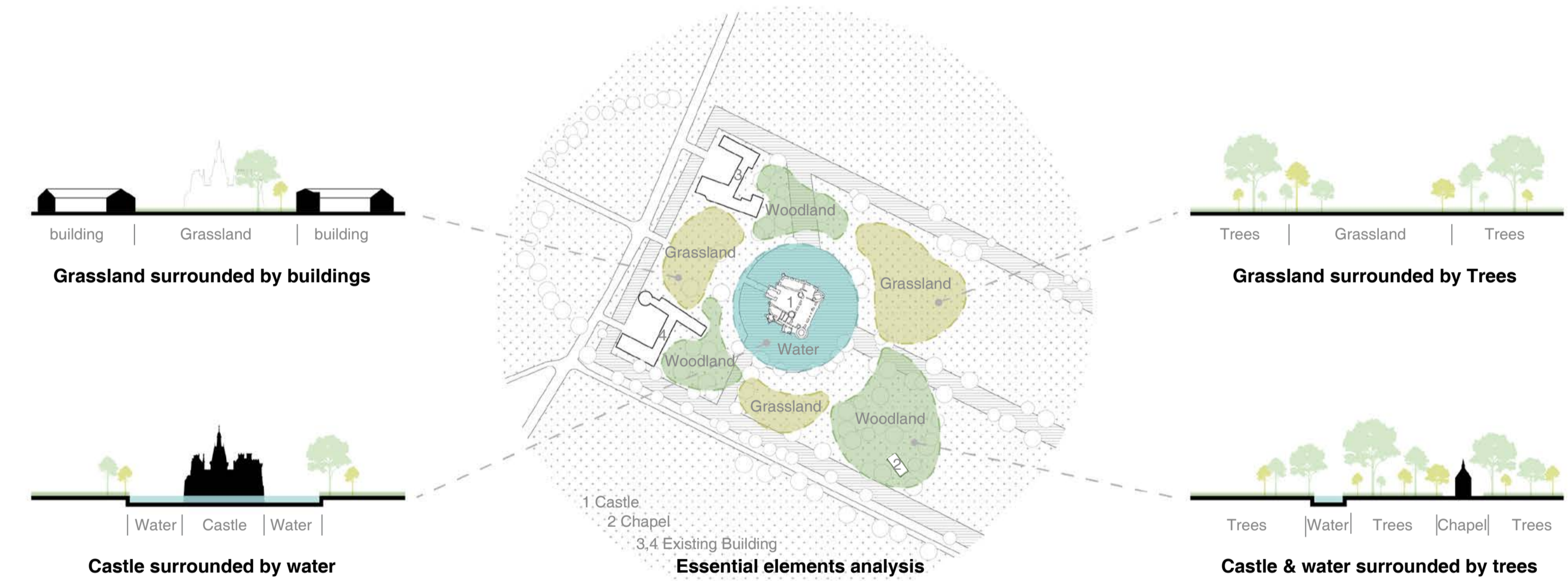
History Timeline

- Start** ● Its oldest parts was erected in 13th century by original owners, the Baucay Family.
- Glory** ● In 1688, Francoise Rochechouart bought it and named it as la Mothe-Chandeniers. The castle was damaged in the Hundred Years' War, Until his arrival it was reused
- Destroy** ● During the French Revolution (1789-1799), It has been ransacked and devastated
- Reborn** ● In 1809, It was bought by Francois Hennecart, a wealthy businessman. Then, He restored the buildings and planted vineyard in the grounds, but retained the massive parts of original medieval buildings.
- Reconstruction** ● In 1857, it was inhabited by Baron Edgard Lejeune, who undertook reconstruction in 1870 in a Romantic style.
- Destroy** ● In 1932, The Castle was destroyed by a fire. With the efforts of firefighters, just only the chapel, outbuildings and a pigeon tower remained. The whole castle has only Enclosure structure left.
- New story** ● In 2016, The Dartagnans bought the whole site including ruins of castle with 7,400 people. They purpose to protect the current situation of the site, but not restore the castle.

New Aquitaine merges the previous regions of Aquitaine, Poitou Charentes and Limousin of France. The region of New Aquitaine comprises twelve departments and stretches from the Gironde Estuary to the Pyrenees and the Spanish border. In the whole region, there are long coastlines, abundant agricultural resources, large areas of farmland, vineyards and forests. In addition, it also includes many important historical buildings, such as castles, forts, etc.

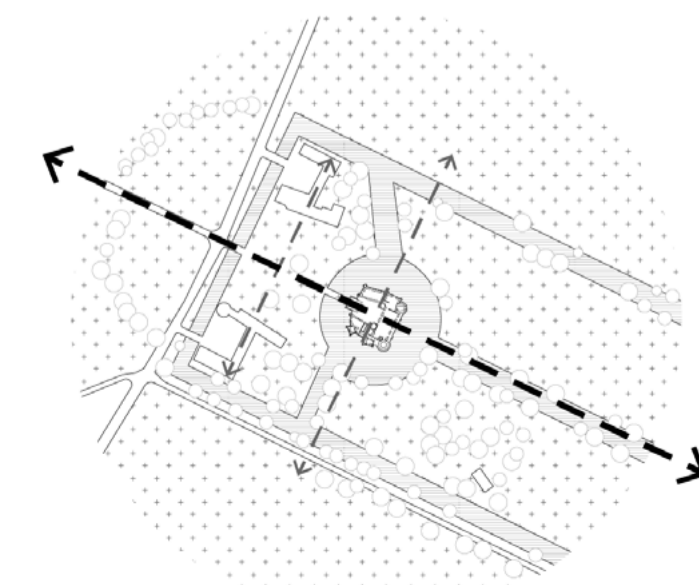


The Location of Mothe Chandeniers



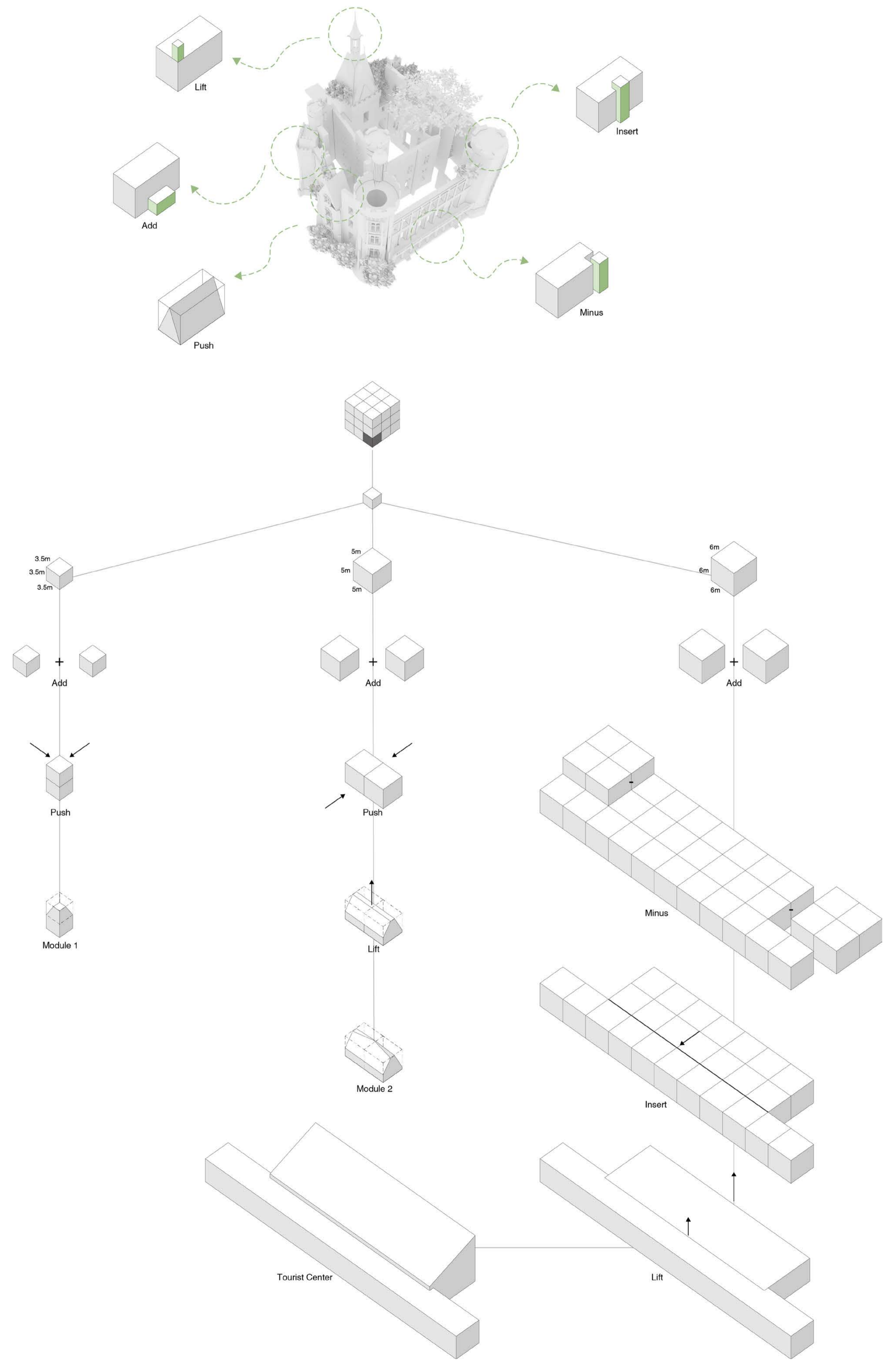
Accessibility analysis

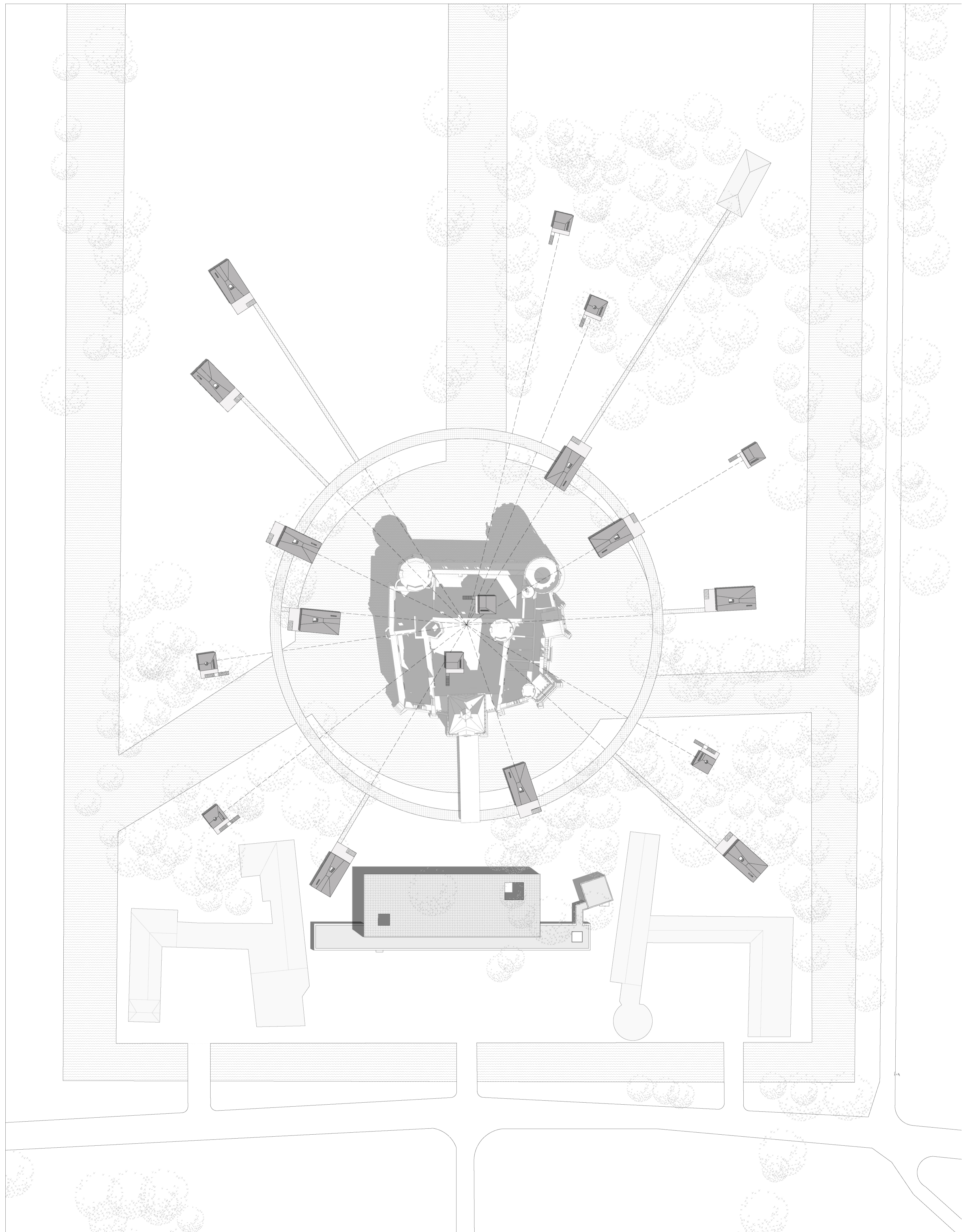
As shown in the diagram on the left, the entire site is divided into three parts by the moat surrounding the castle. Once these were connected by small bridges across the moat, and after many years of desolation of Castle Mothe Chandeniers, the small bridges have been damaged and resulted in three isolated areas. So in order to reconnect the sites, we must consider resetting the new connection method in the design process.

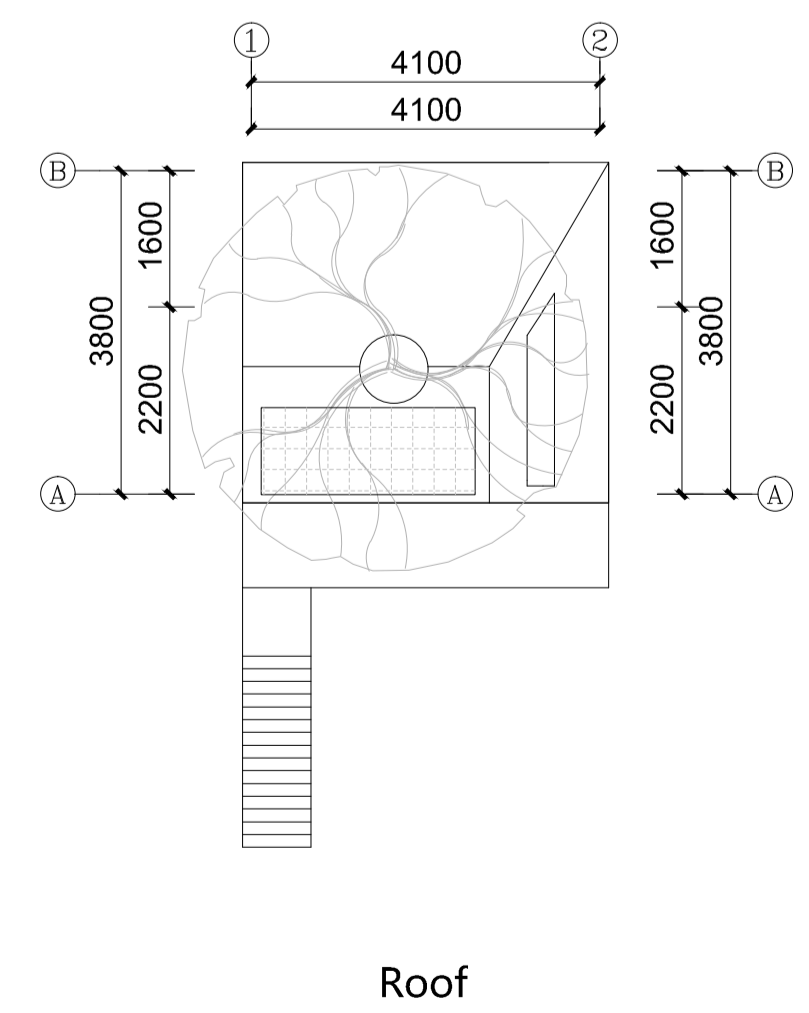
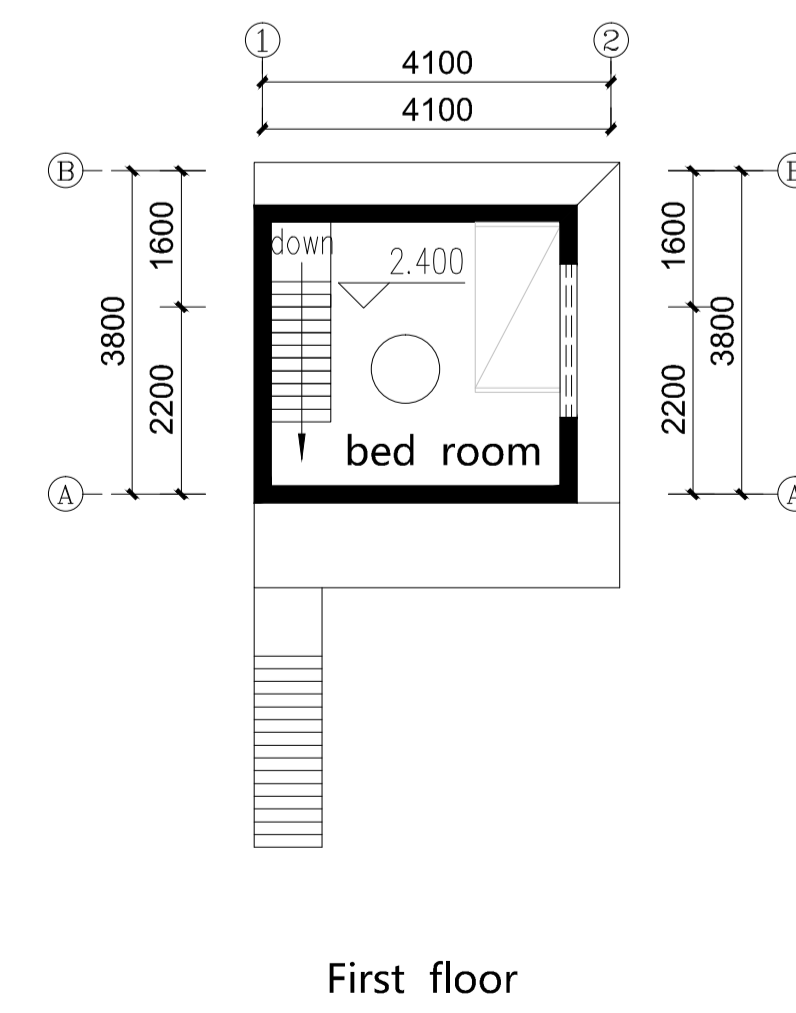
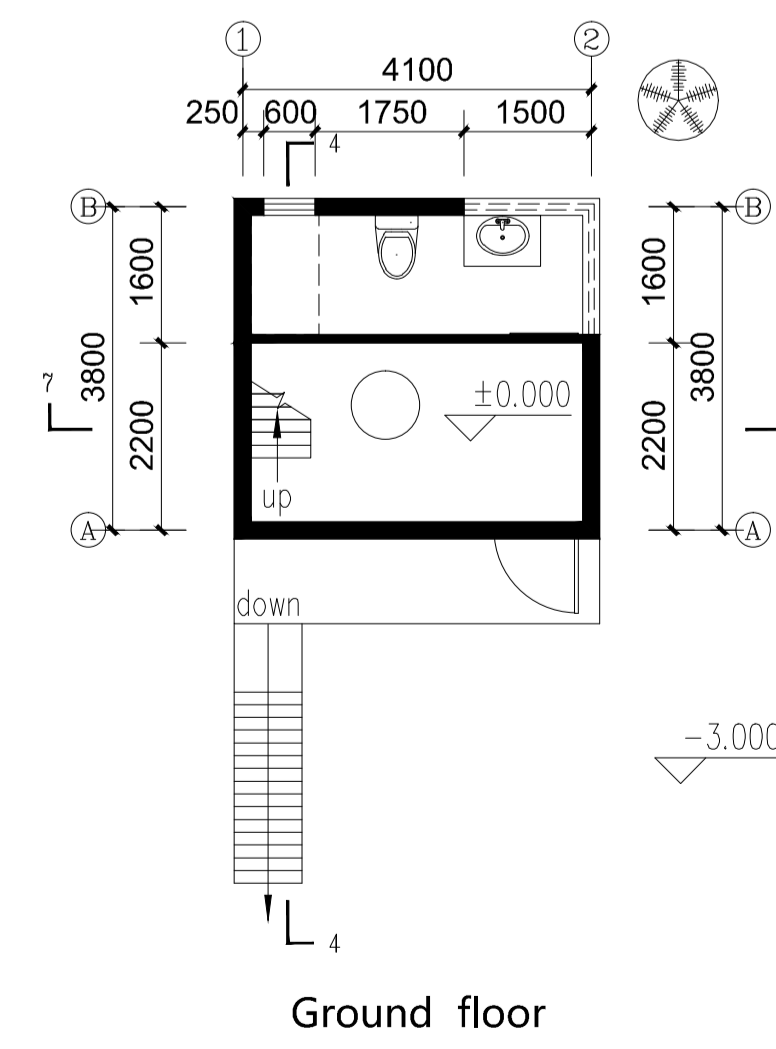
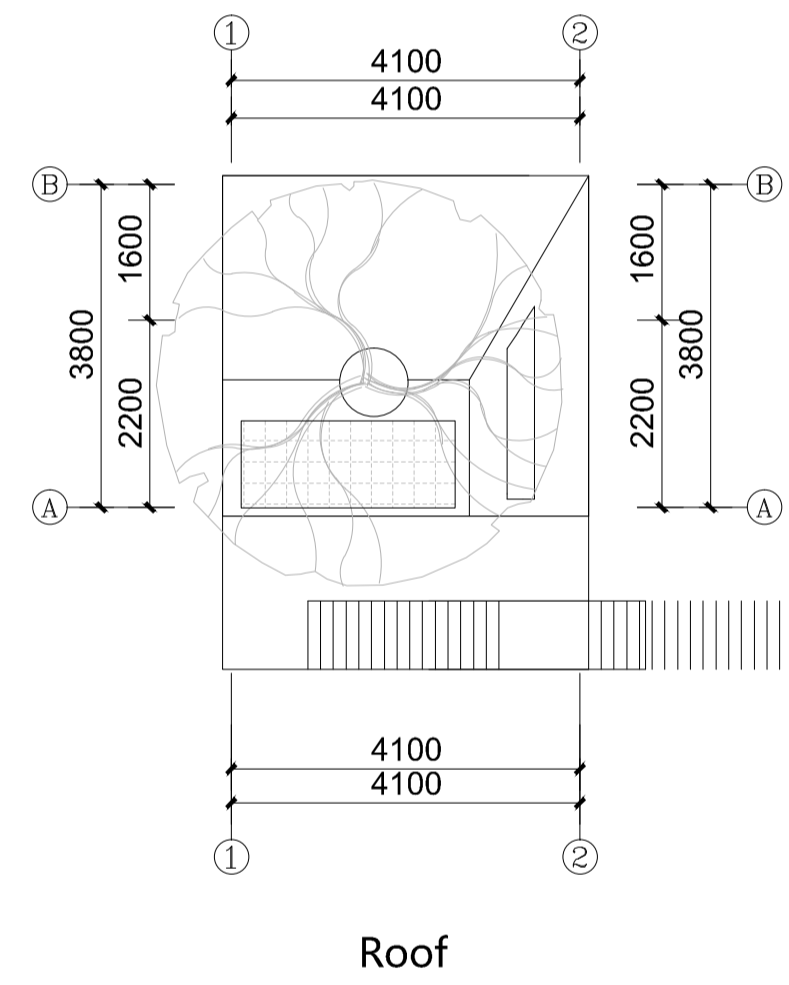
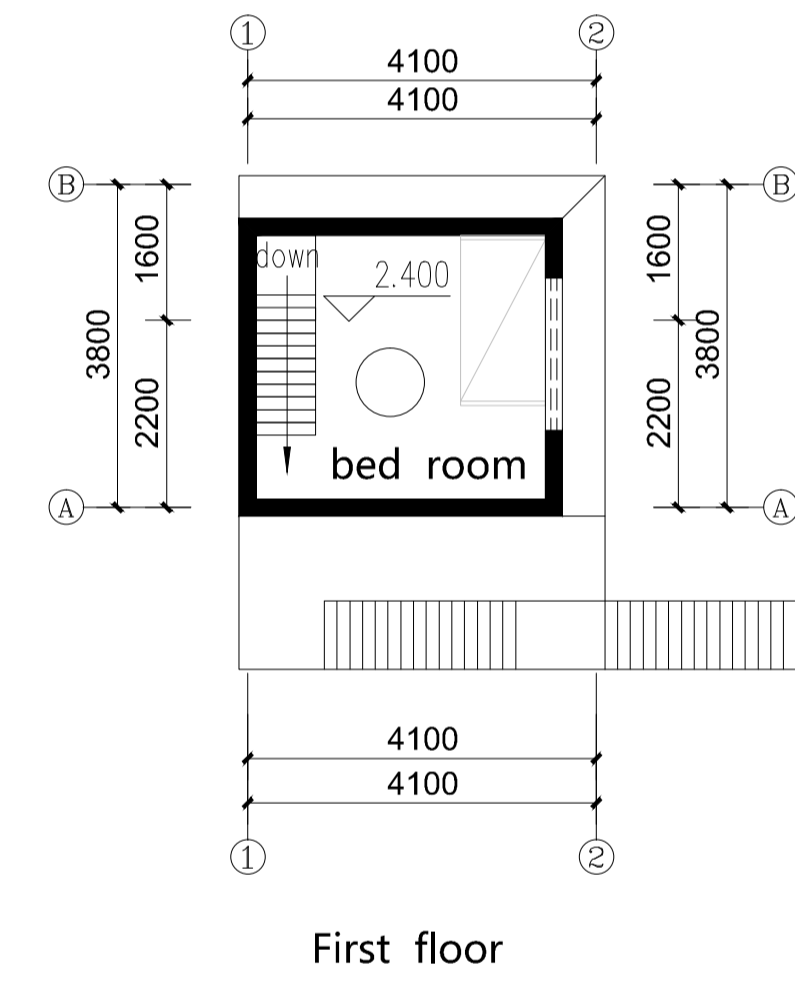
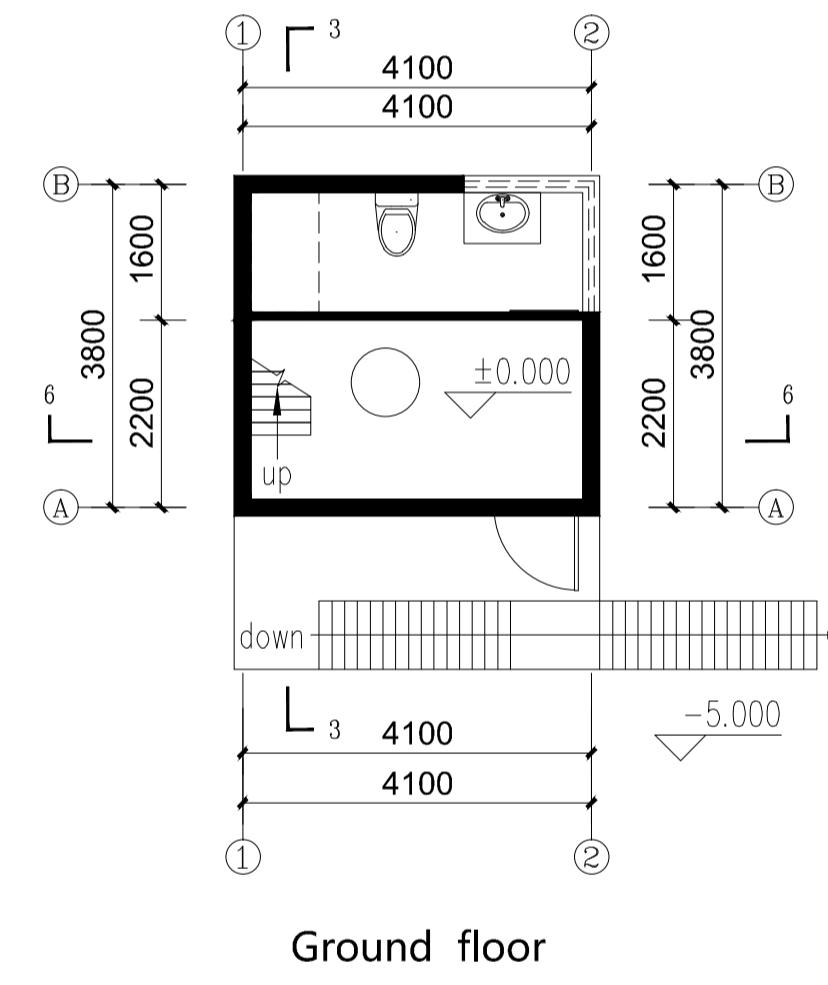
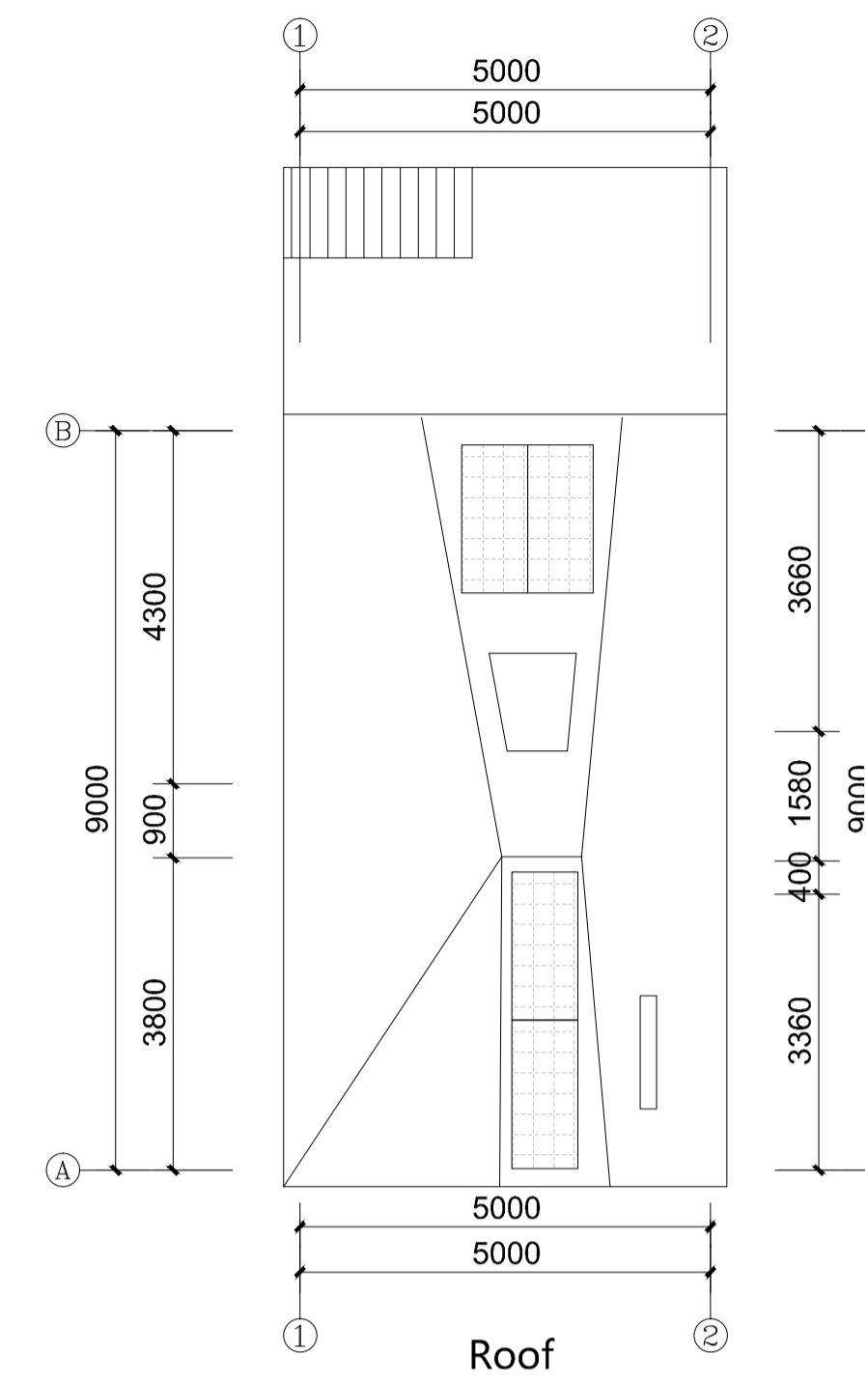
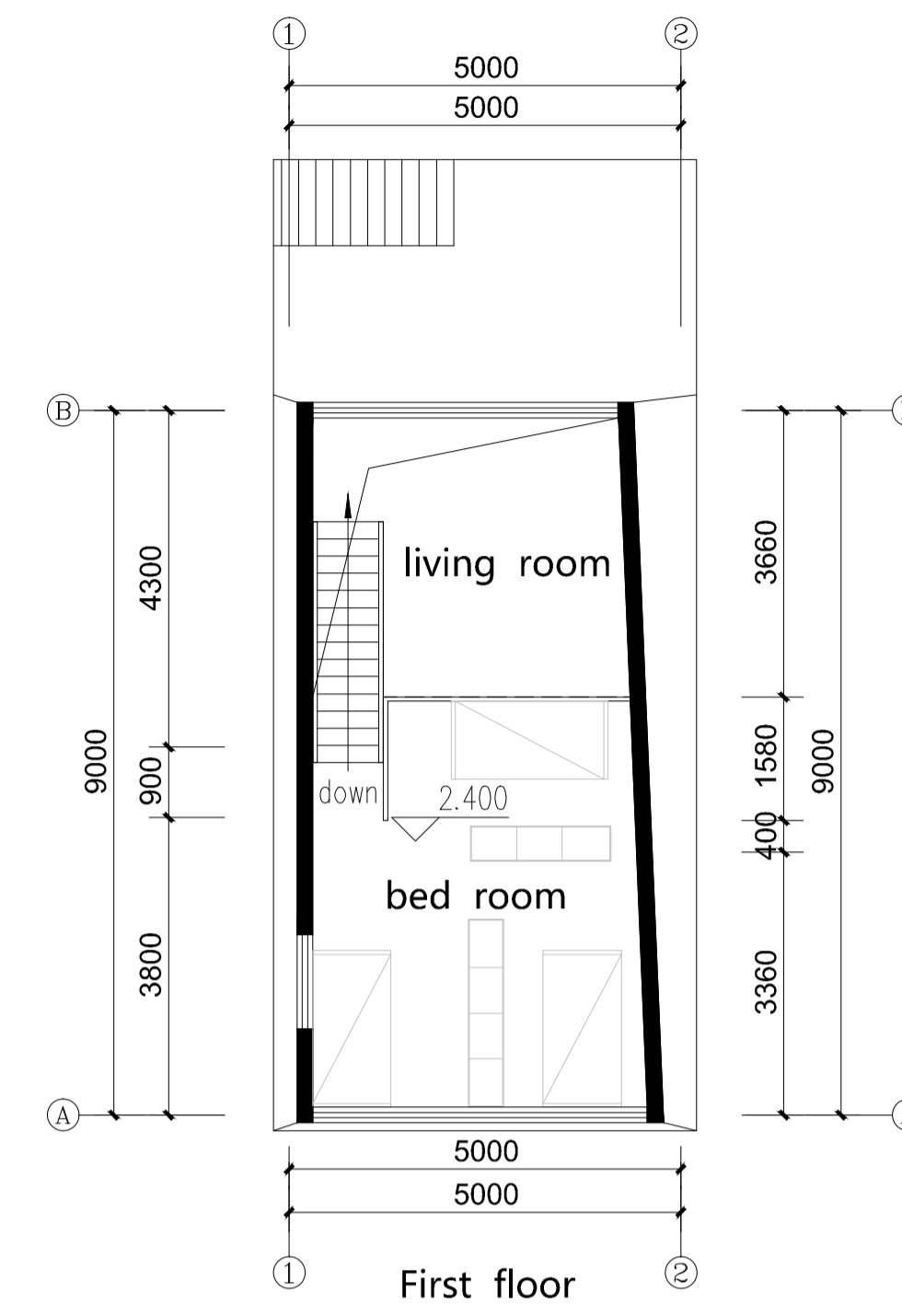
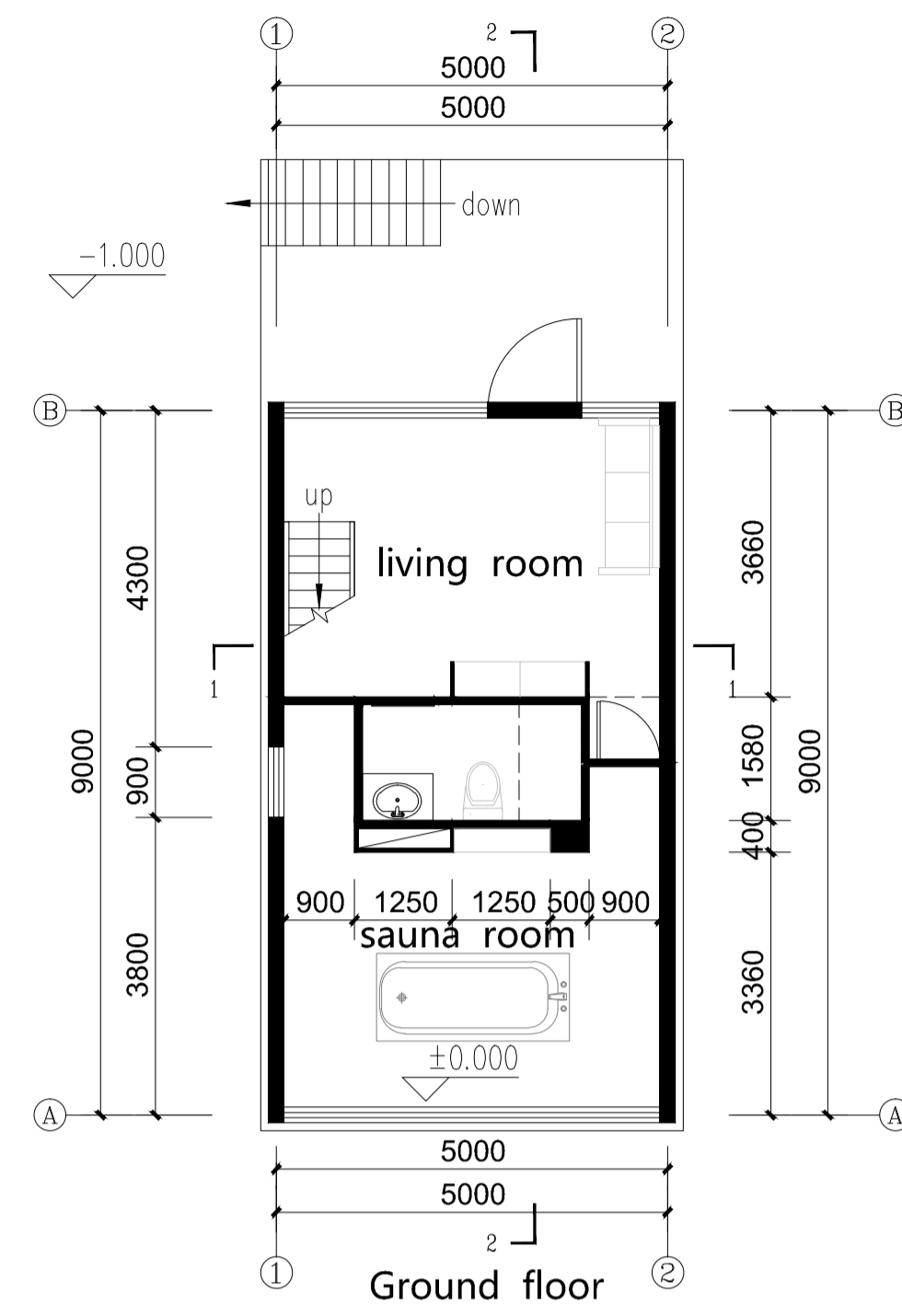


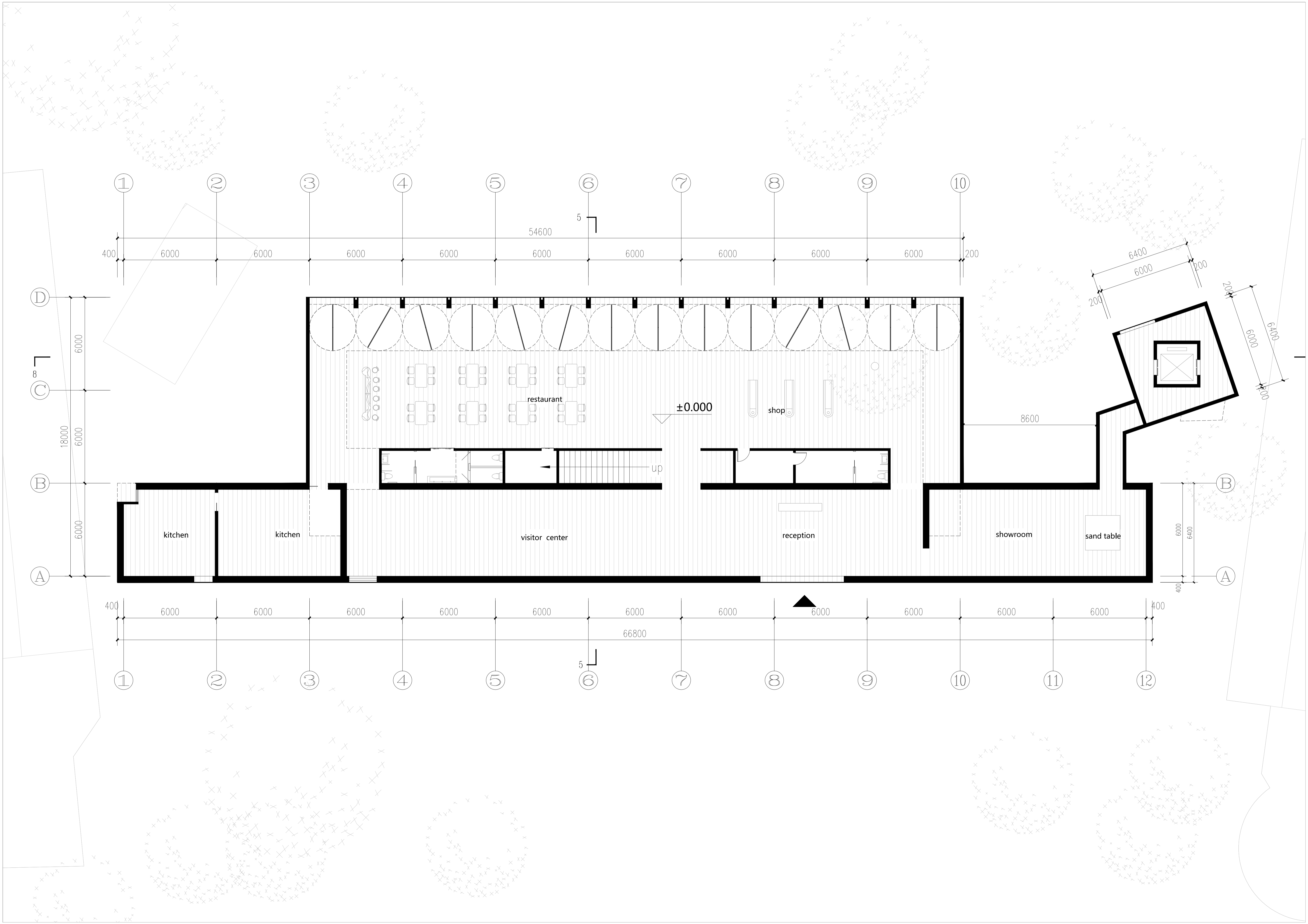
Layout analysis

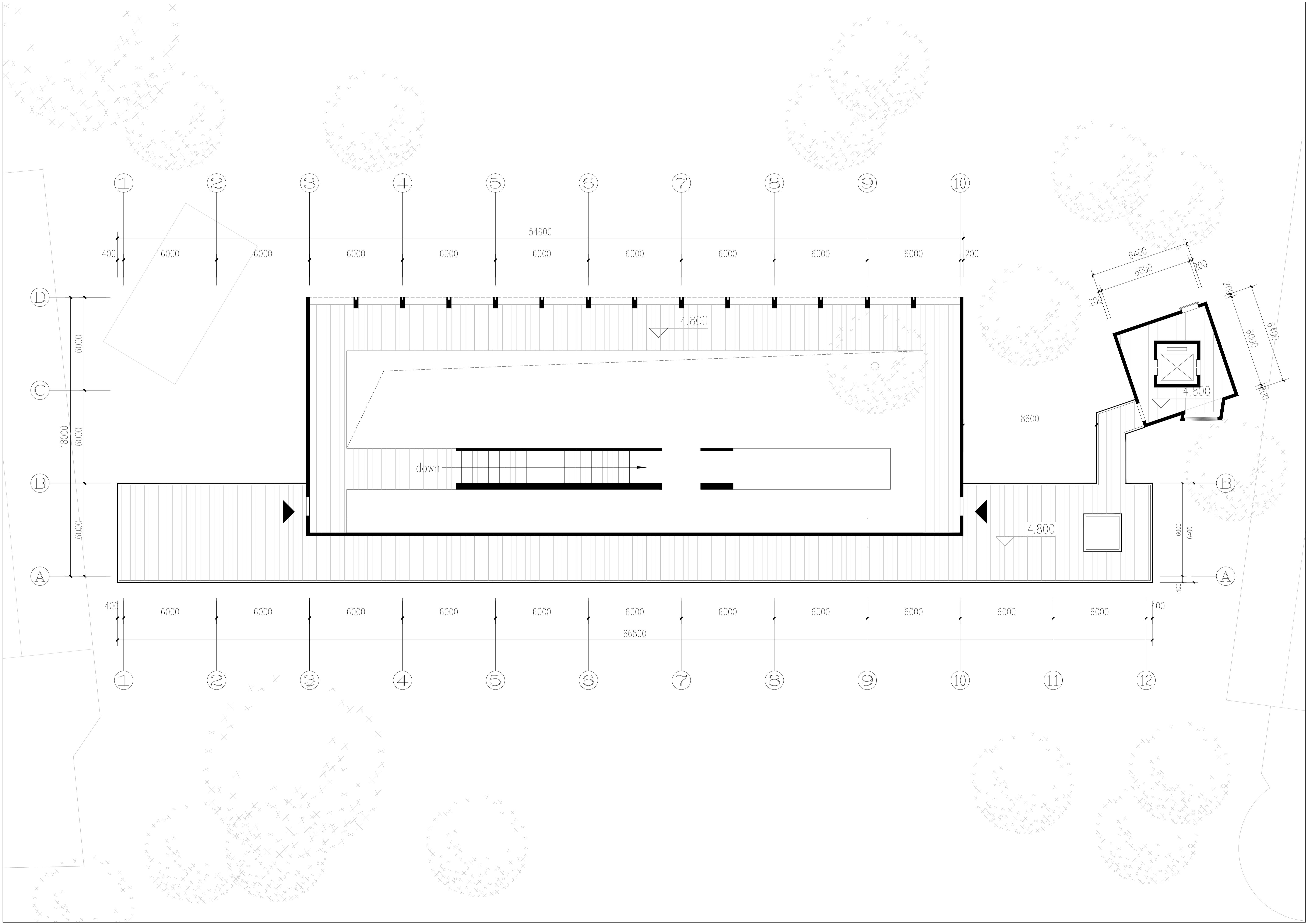
From the layout analysis diagram, it can be seen that the entire base is a typical symmetrical layout, and there is a very clear main axis in the long axis direction of the site. From the beginning of the main axis (the entrance of the site), the buildings on the outside are symmetrically arranged on both sides, forming the first secondary axis orthogonal to the main axis. Afterwards, it passed an open space to the center of the site - the castle surrounded by the moat. The circular moat extends two channels in the direction orthogonal to the main axis, which is connected to the outer moat. This forms a second secondary axis. In addition, the entire castle and the round moat have shaped the centripetal layout.











① ② ③ ④ ⑤ ⑥ ⑦ ⑧ ⑨ ⑩

400 6000 6000 6000 6000 6000 6000 6000 6000 6000 6000 200

④
6000
③
18000
6000
②
6000
①

400 6000 6000 6000 6000 6000 6000 6000 6000 6000 6000 6000 400
66800

① ② ③ ④ ⑤ ⑥ ⑦ ⑧ ⑨ ⑩ ⑪ ⑫

6400 6000 200
200 6000 6400
4.800
8600
4.800
6000 6400
400

down

4.800

4.800

