



North-east elevation

North-west elevation

South-west elevation

South-east elevation

South-west elevation

South-east elevation

North-east elevation

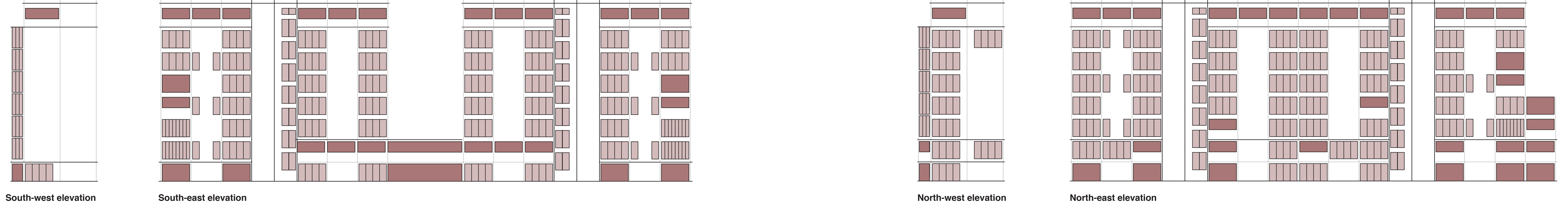
North-west elevation

Diagram of facade pattern scheme - tower

Legend: ■ windows ■ openings

Diagram of facade pattern scheme - short slab

Legend: ■ windows ■ openings



South-west elevation

South-east elevation

North-west elevation

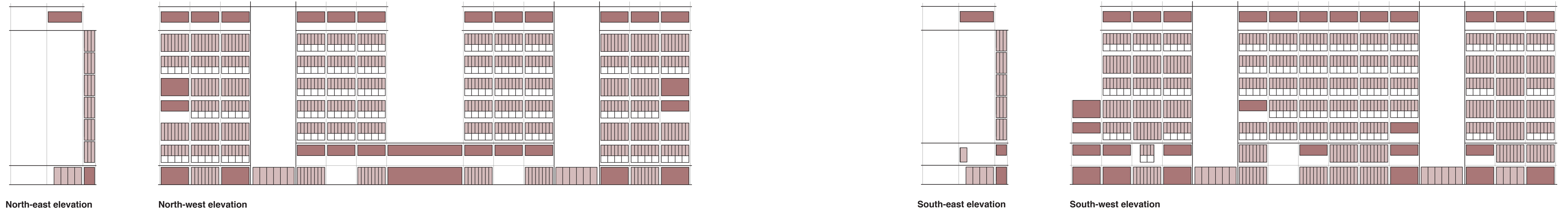
North-east elevation

Diagram of facade pattern scheme - united 2 slabs

Legend: ■ windows ■ openings

Diagram of facade pattern scheme - long slab

Legend: ■ windows ■ openings

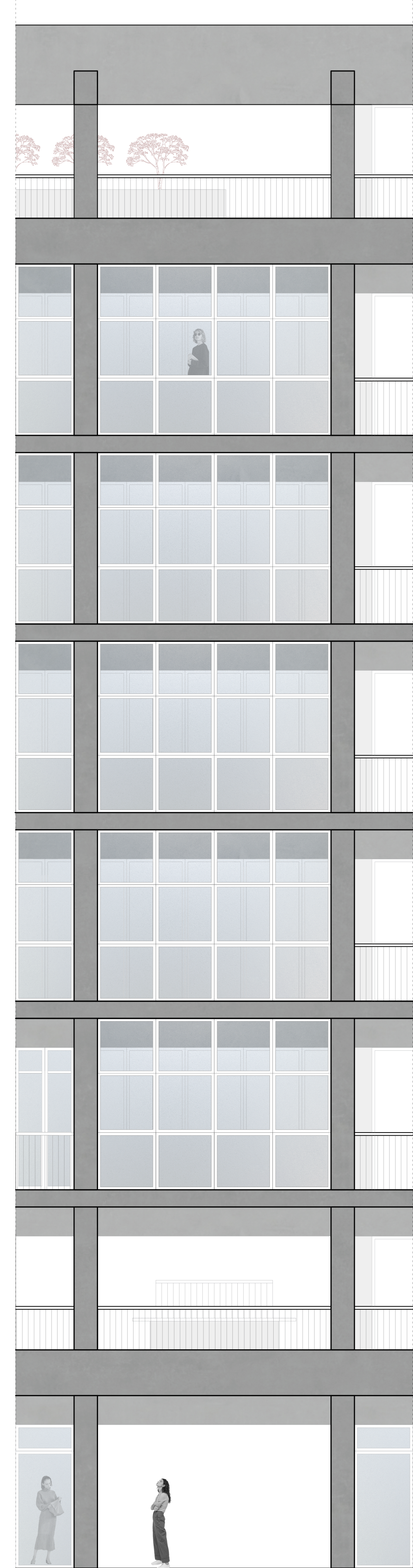


North-east elevation

North-west elevation

South-east elevation

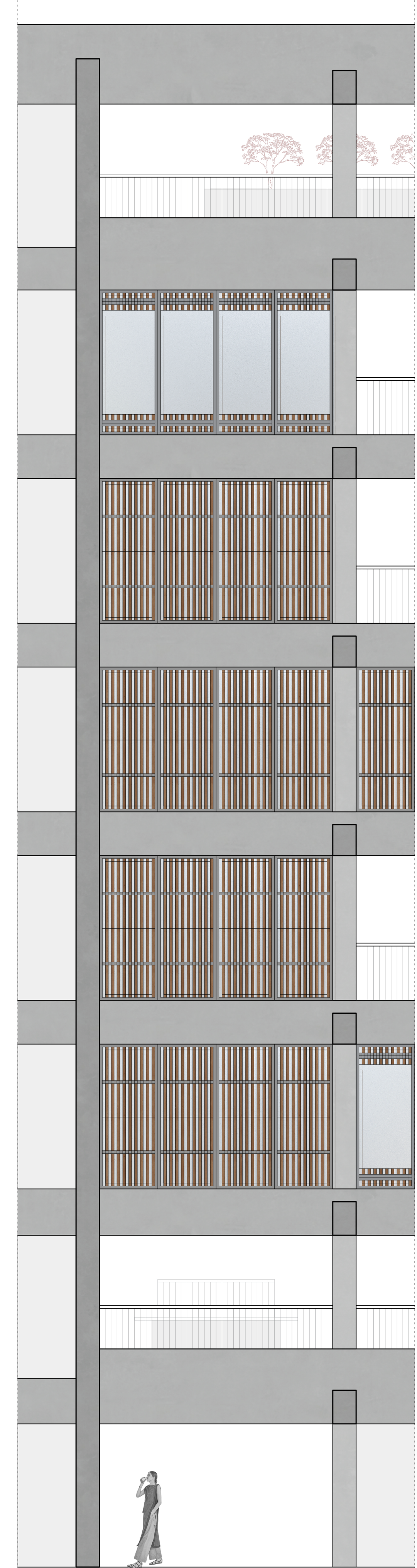
South-west elevation



North-east elevation
Detailing of the long slab block through cross-section and elevations, M=1:50



Detail cross-section



South-west elevation

Layering legend:

Floors

1. Floor type 7
 - 55cm - planting soil
 - 23cm - draining rock mix
2. Floor type 6
 - 3cm - wooden floorboards over steel construction
 - 10cm - XPS with 2% inclination for draining
 - 3cm - rock wool
 - 6cm - leveling concrete
 - 0.5cm - hydroisolation
 - 20cm - reinforced concrete slab
 - 1cm - plaster
3. Floor type 5
 - 3cm - wooden floorboards over steel construction
 - 10cm - XPS with 2% inclination for draining
 - 3cm - rock wool
 - 6cm - leveling concrete
 - 0.5cm - hydroisolation
 - 20cm - reinforced concrete slab
 - 20cm - lowered ceiling
 - 2x1.25cm - Magply boards
 - 0.5cm - plaster and paint
4. Floor type 4
 - 3cm - ceramic tiles and glue
 - 6cm - XPS
 - 6cm - leveling concrete
 - 0.5cm - hydroisolation
 - 20cm - reinforced concrete slab
 - 1cm - plaster
5. Floor type 3
 - 3cm - parquet and glue
 - 5cm - XPS
 - 6cm - leveling concrete
 - 0.5cm - hydroisolation
 - 20cm - reinforced concrete slab
 - 20cm - lowered ceiling
 - 2x1.25cm - Magply boards
 - 0.5cm - plaster and paint
6. Floor type 2
 - 3cm - wooden floorboards over steel construction
 - 10cm - XPS with 2% inclination for draining
 - 3cm - rock wool
 - 6cm - leveling concrete
 - 0.5cm - hydroisolation
 - 20cm - reinforced concrete slab
 - 5cm - rock wool
 - 2x1.25cm - Magply boards
 - 1cm - plaster and paint
7. Floor type 1
 - 1cm - leveling concrete and finish
 - 0.5cm - hydroisolation
 - 20cm - reinforced concrete slab
 - 70cm - IGLU formwork for ventilated cavity
 - 10cm - levelling concrete
 - 20cm - gravel

Walls

1. Wall type 2
 - 1cm - plaster and paint
 - 2x1.25cm - Magply boards
 - 10cm - PIR insulation board fixed onto metal studs
 - 2x1.25cm - Magply boards
 - 1cm - plaster and paint
2. Wall type 1
 - 1cm - paint and plaster
 - 40cm - reinforced concrete beam
 - 15cm - PIR insulation board fixed onto metal studs
 - 2x1.25cm - Magply boards
 - 12cm - air cavity
 - 2cm - Marazzi Grande concrete look ventilated wall panel (cladding)

Shading devices

1. Shading device type 2
 - Soffit for roller shades
2. Shading device type 1
 - Rabel systems 14200 Facade Vertical Folding SWhading System with wood cladding finish

