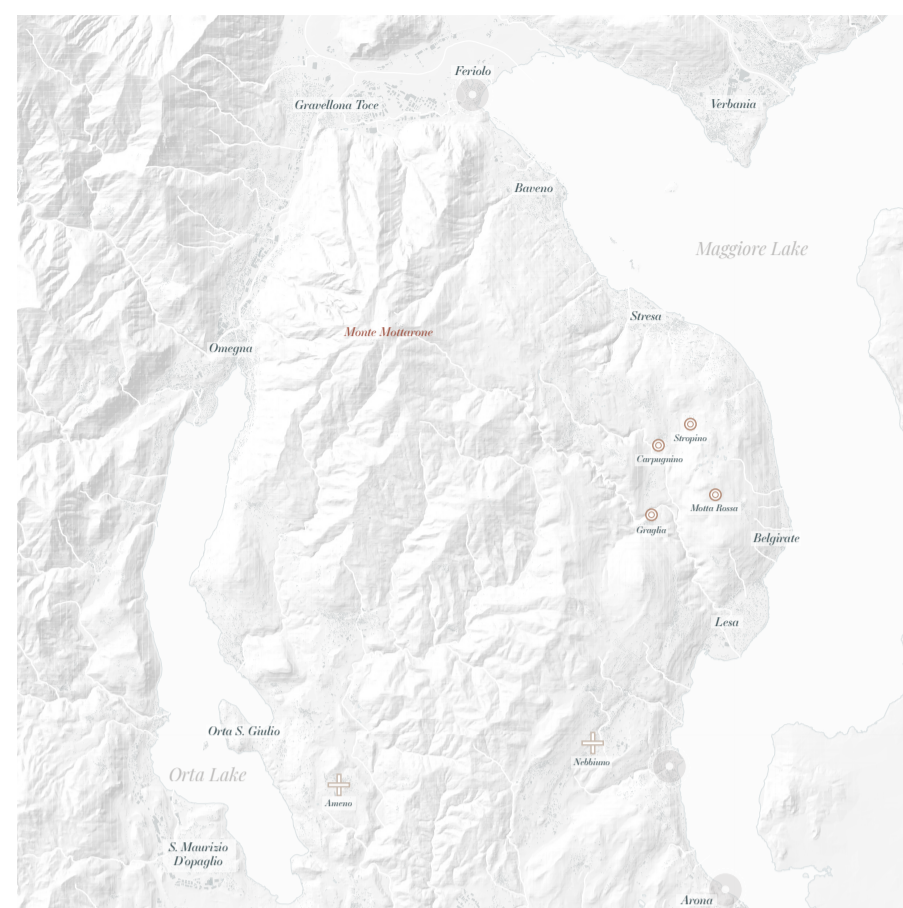


MONTE MOTTARONE

The construction of Monte Mottarone

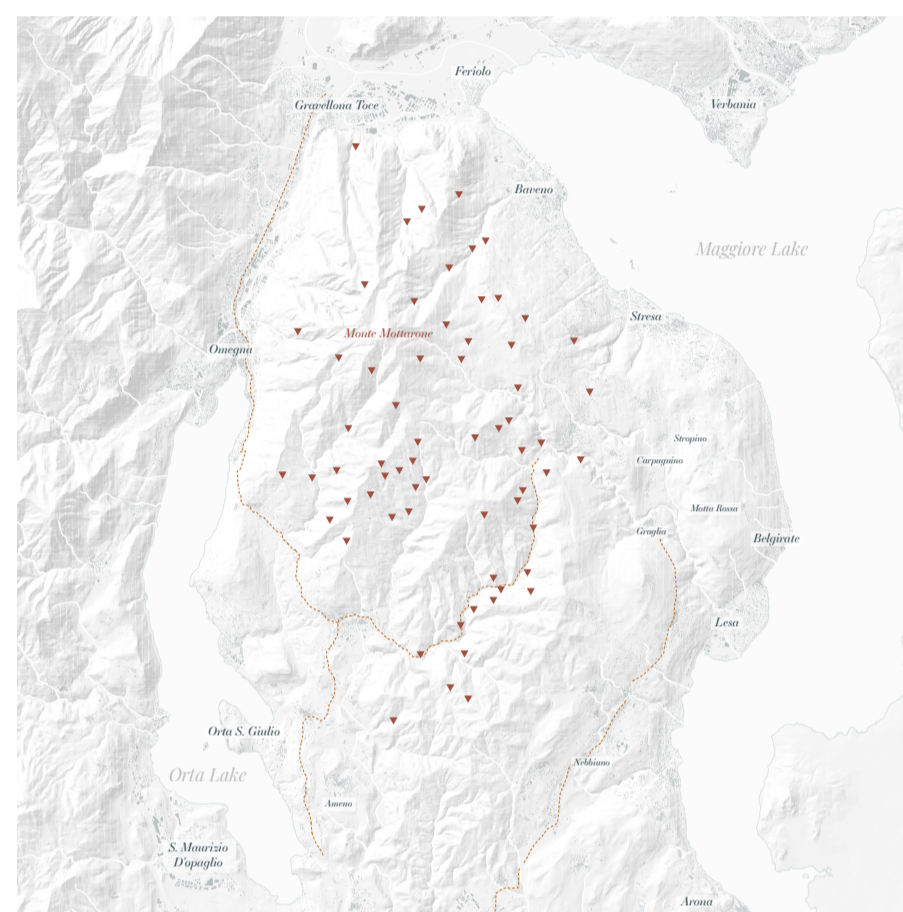
BRONZE AND IRON AGES



Or suntum laborib eriatu eicis ditem asped estet atem de magnat excearum que accuscium eum qui is et demqui offic temolor aut lab ipsusa aute aut anio quam isqui berum quiaspel il imi officmpores seque dolororum qui consequid et omnimaxim di duntem. Henia dem rest laboribeatur adpidunt hicia is sitemodigenti faceature pra perum diti ditatat iaturitem asperist. cons et alibus. Lorupta sperupta dicture doloris escientur?



MEDIEVAL AND PASTORAL AGES



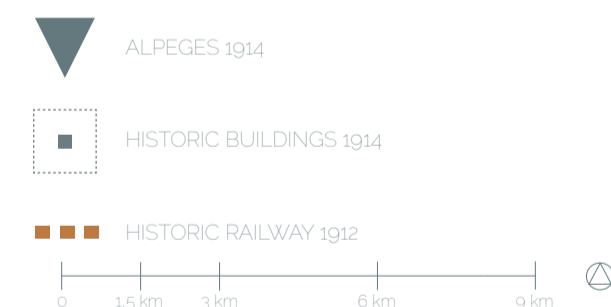
Or suntum laborib eriatu eicis ditem asped estet atem de magnat excearum que accuscium eum qui is et demqui offic temolor aut lab ipsusa aute aut anio quam isqui berum quiaspel il imi officmpores seque dolororum qui consequid et omnimaxim di duntem. Henia dem rest laboribeatur adpidunt hicia is sitemodigenti faceature pra perum diti ditatat iaturitem asperist. cons et alibus. Lorupta sperupta dicture doloris escientur?



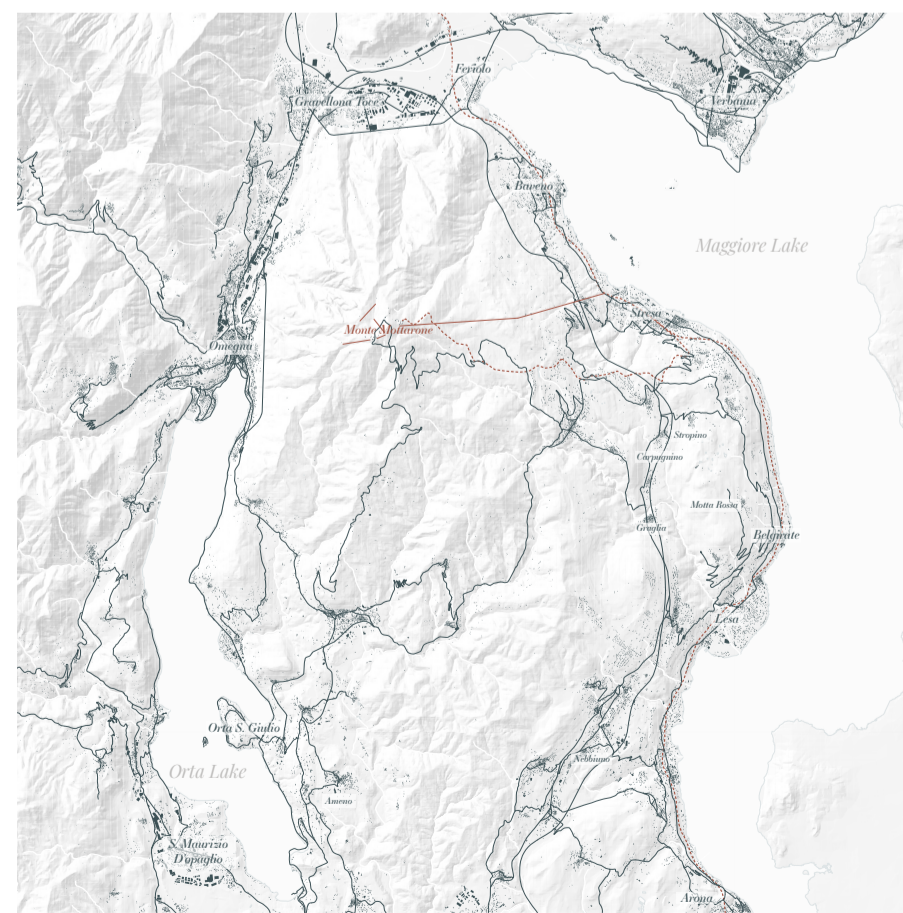
BEGINNING OF THE 20TH CENTURY



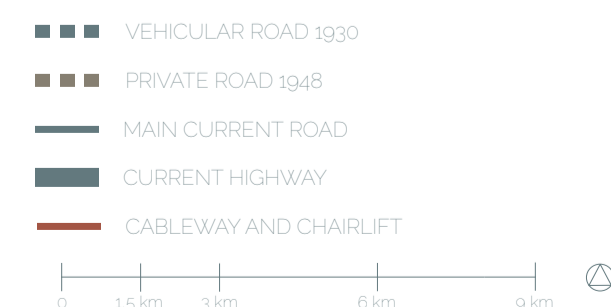
Or suntum laborib eriatu eicis ditem asped estet atem de magnat excearum que accuscium eum qui is et demqui offic temolor aut lab ipsusa aute aut anio quam isqui berum quiaspel il imi officmpores seque dolororum qui consequid et omnimaxim di duntem. Henia dem rest laboribeatur adpidunt hicia is sitemodigenti faceature pra perum diti ditatat iaturitem asperist. cons et alibus. Lorupta sperupta dicture doloris escientur?



MODERN TIMES



Or suntum laborib eriatu eicis ditem asped estet atem de magnat excearum que accuscium eum qui is et demqui offic temolor aut lab ipsusa aute aut anio quam isqui berum quiaspel il imi officmpores seque dolororum qui consequid et omnimaxim di duntem. Henia dem rest laboribeatur adpidunt hicia is sitemodigenti faceature pra perum diti ditatat iaturitem asperist. cons et alibus. Lorupta sperupta dicture doloris escientur?



MELTING GLACIERS

Due to the sudden rise in temperature, the melting of the Ossola Valley glaciers began, which, with their erosive action, went on to smooth the granite of Monte Mottarone, creating the current morphology.



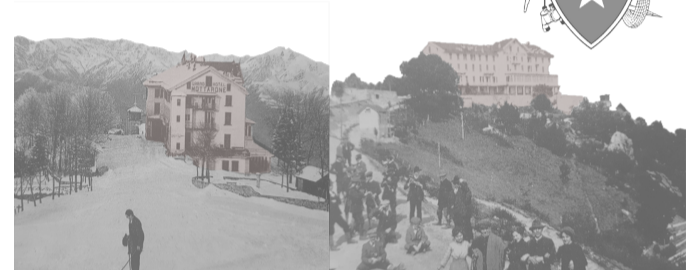
RURAL LANDSCAPE

For centuries, the landscape of Monte Mottarone has been characterized by the presence of small rural villages consisting of courtyards of buildings distributed around a vegetable garden and their associated stables and barns with thatched roofs, near the mountain pastures.



CAI ON MONTE MOTTARONE

In 1875 the first trip to Monte Mottarone was organized by the Italian Alpine Club.



THE CROSS AT THE SUMMIT

In 1901, a cross about 15 meters high was built on the summit of Monte Mottarone, which would become an important landmark in the landscape: it is made of Carrara marble, while the base is made of Bavaria granite.



STRESA-MOTTARONE RAILWAY

The Stresa-Mottarone railway is inaugurated: 1,200-meter difference in elevation is covered in one hour; it is the first electric-powered rack-and-pinion railway in Italy. During the winter tobogganing and jumping are now also practiced.



FIRE AND THE FIRST CAI SHELTERS

In 1943 due to a short circuit, the Grand Hotel Mottarone burns down; it will never be rebuilt. A few years later CAI of Omegna builds two shelters: the hut at Alpe dell'Omo and the Grand Baita CAI on the summit of Mt.



THE CABLWAY

In 1964 the Stresa-Mottarone railway was officially closed and dismantled. The little train is retired and in its place in 1970, the Stresa-Mottarone cable car is built and put into operation.



X M B.C.

I M B.C.

XVII Century

XIX Century

1875

1884

1901

1908

1911/12

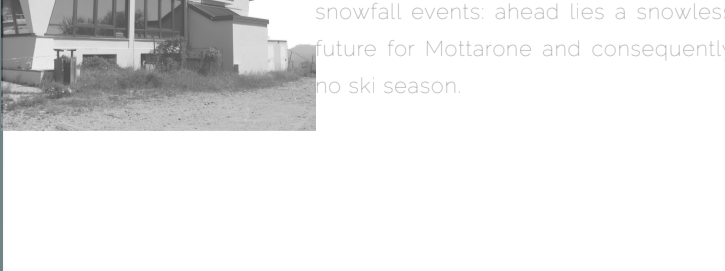
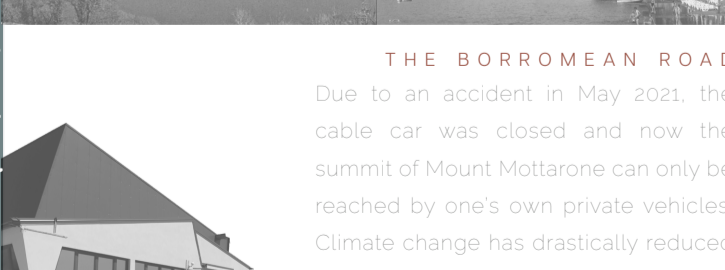
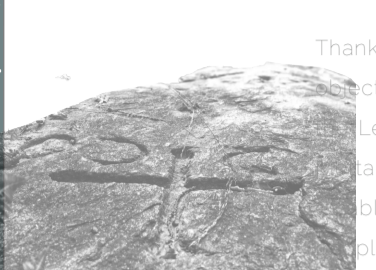
1930

1943/45

1948

1964

XXI Century



LEPONTINE PEOPLE

Thanks to the findings of necropolis and objects of daily use, the presence of Leponti along the slopes of Monte Mottarone during the Iron Age has been established. The Leponti were an Alpine people who spoke the Celtic language.

INDUSTRIALIZATION AND TOURISM

In the Alps the first signs of industrialization date back to the 1950s. In Monte Mottarone this phenomenon began in the second half of the 1800s.

STAYING AT MOTTARONE

In 1884, thanks in part to the intervention of the Italian Alpine Club, the first hotel on the mountaintop was built: the Grand Hotel Mottarone.

SKIING AT MOTTARONE

The Grand Hotel Mottarone remains open in winter: the Mottarone Ski Club is born and ski seasons begin.

THE FIRST VEHICULAR ROAD

In 1930 the road from Armeno to the top of Mt. was opened, opening it up to automobile tourism. Soon afterwards, the first slalom races were also held and a trampoline made of iron pipes was built.

THE BORROMEAN ROAD

In 1948 the road connecting the Borromeo family to the Alpi locality to the summit of Monte Mottarone was built: the road was private and was built by the Borromeo family.

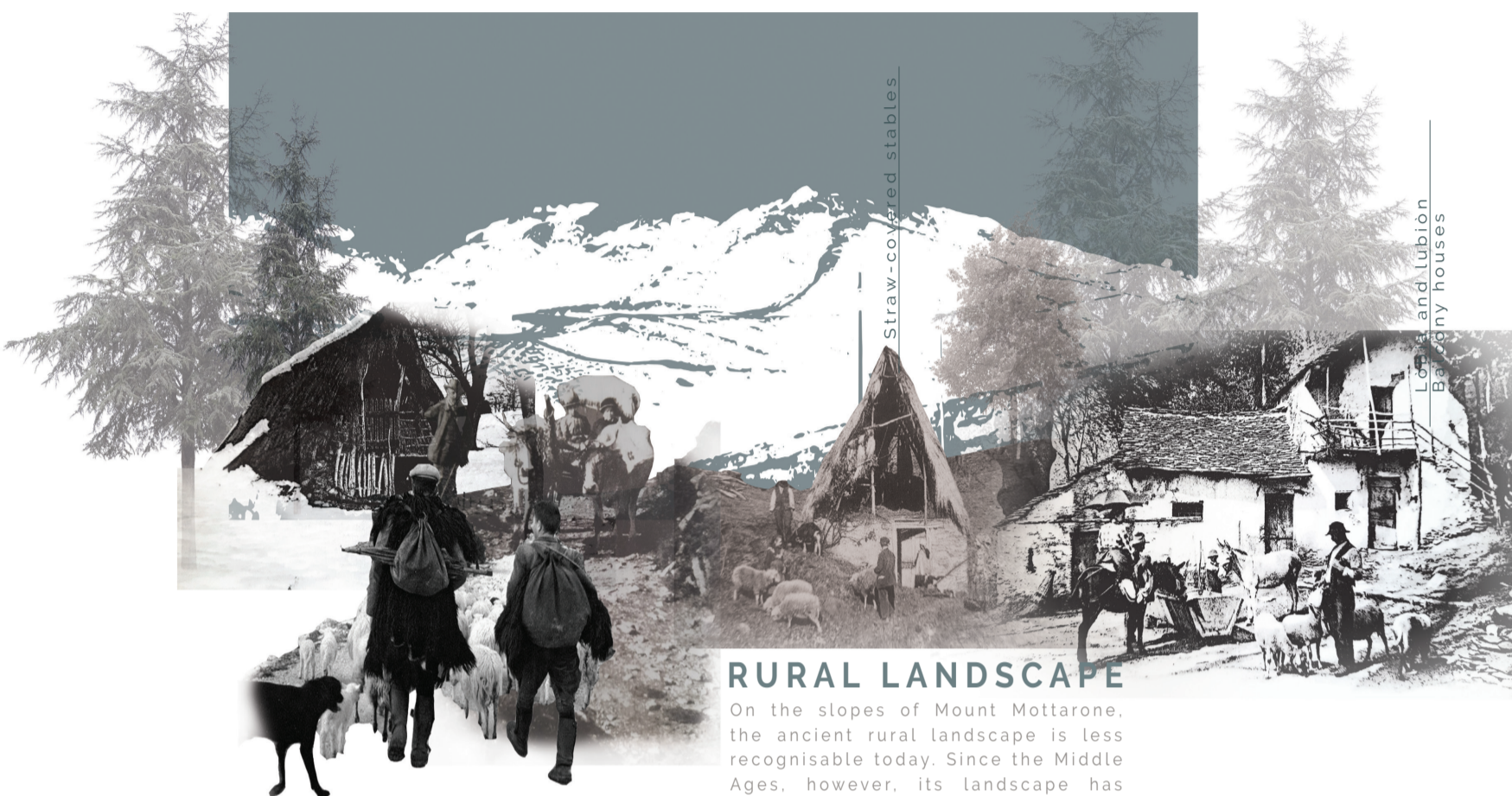
THE BORROMEAN ROAD

Due to an accident in May 2021, the cable car was closed and now the summit of Monte Mottarone can only be reached by one's own private vehicles. Climate change has drastically reduced snowfall events: ahead lies a snowless future for Mottarone and consequently for the ski season.



ANCIENT LANDSCAPES

The current rounded shape of Mottarone derives from the shaping action of glaciers in the past, resulting in particular from four glaciations. The ancient inhabitants of the region were the Leponti, an ancient Alpine people.



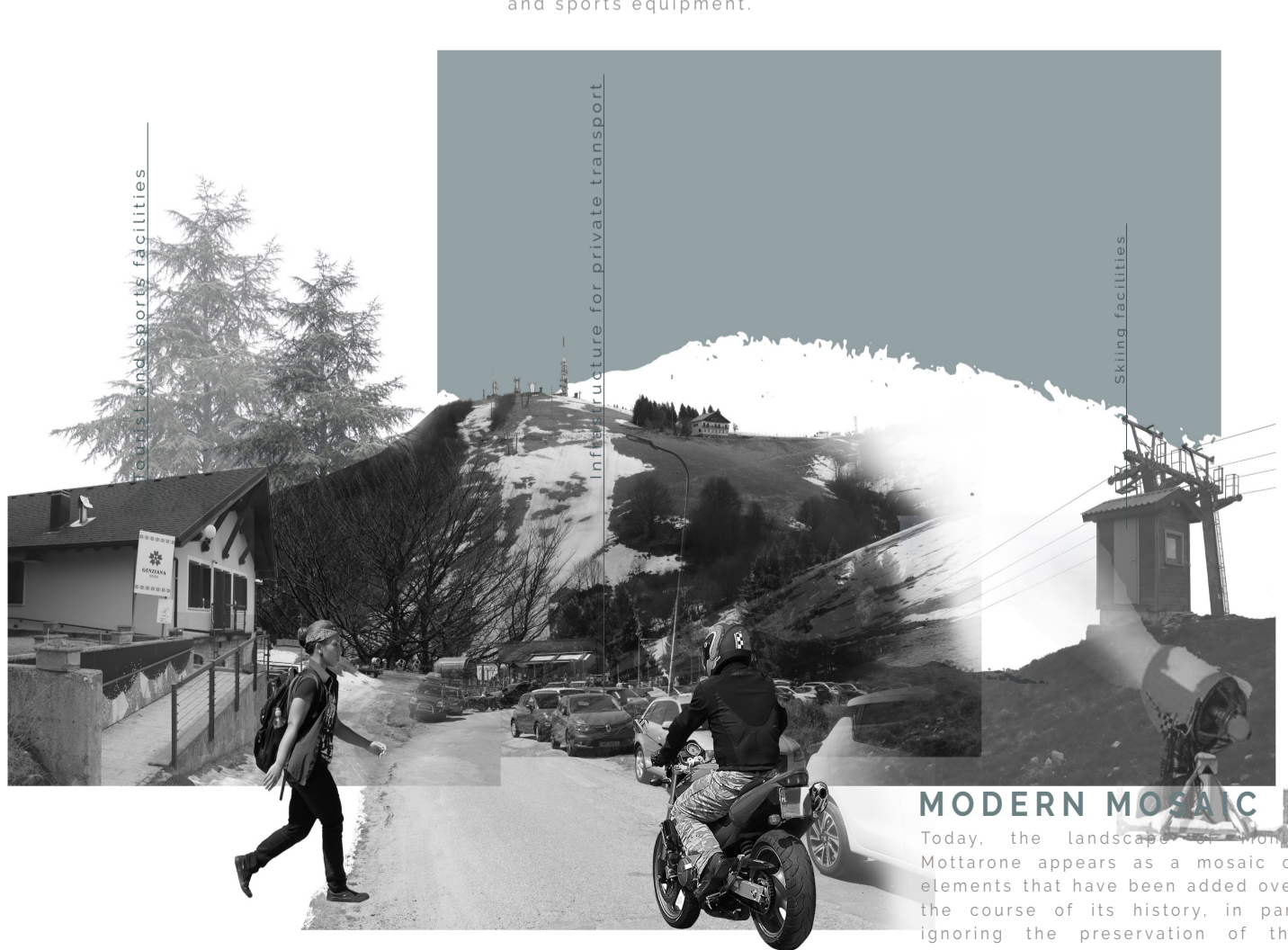
RURAL LANDSCAPE

On the slopes of Mount Mottarone, the ancient rural landscape is less recognizable today. Since the Middle Ages, however, its landscape has been characterized by rural buildings (houses, barns, farmsteads) often distributed around small courtyards.



SKI ERA

The spread of skiing in the early 1900s transformed Mount Mottarone into a mountain for the masses, thanks to its proximity to large cities and the presence of the railway. From here, the landscape became populated with hotels, ski facilities and sports equipment.



MODERN MOSAIC

Today, the landscape of Monte Mottarone appears as a mosaic of elements that have been added over the course of its history, in part ignoring the preservation of the ecological and landscape characteristics of the area.