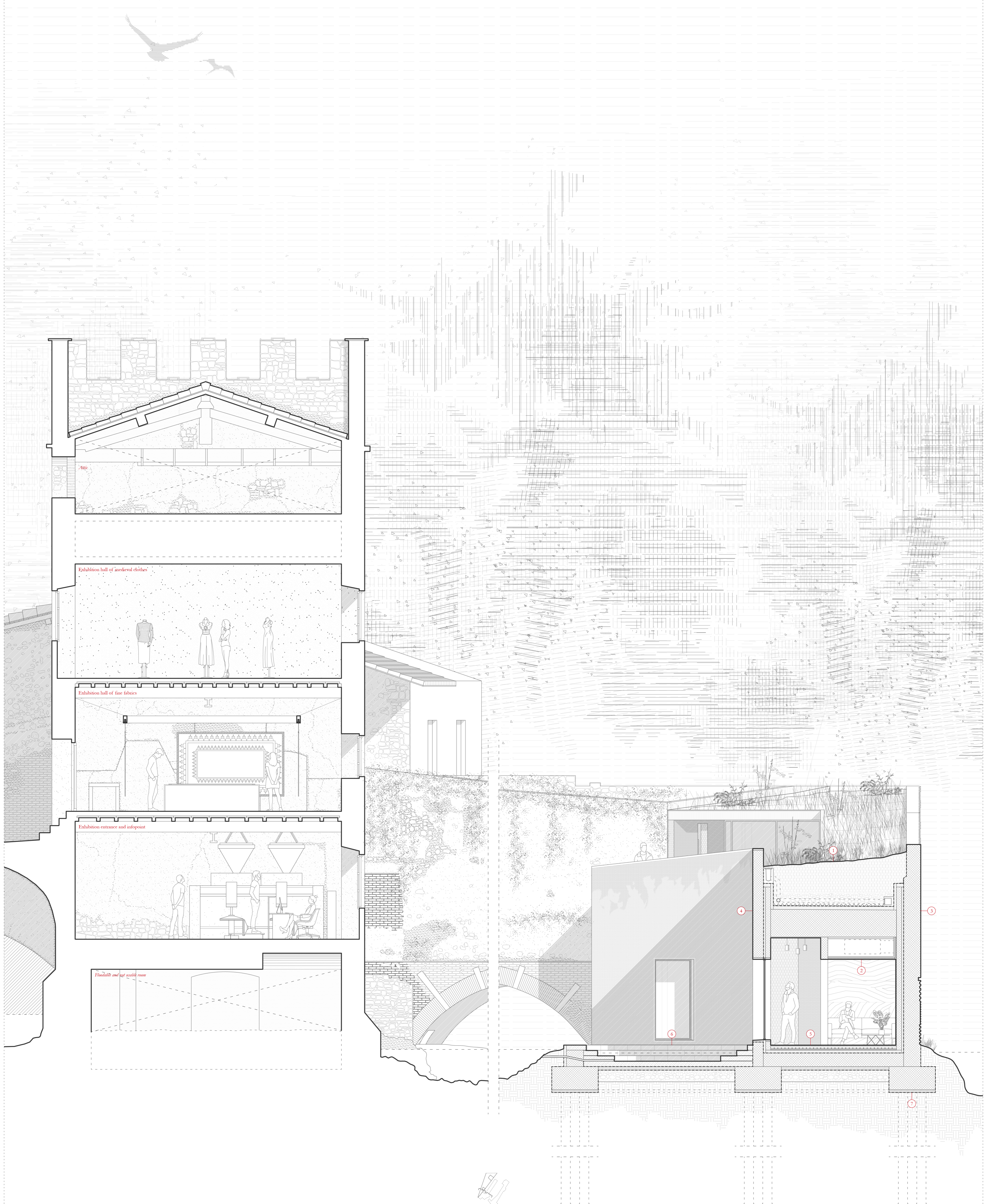


- 1. ROOF Vegetation, Extensive substrate, Draining layer, Filter layer, Waterproof layer, Thermal insulation in glass fiber, Vapor barrier, Horizontal structure in reinforced concrete
- 2. FALSE CEILING Ventilation system, Rockwool panel for acoustic insulation, Cladding in wooden slats
- 3. RIVERSIDE FAÇADE Vertical structure in reinforced concrete, L shaped steel profile, Waterproof layer, Thermal insulation in glass fiber, Vapor barrier, Double internal concrete wall, Cladding in wooden slats
- 4. EAST FAÇADE Vertical structure in reinforced concrete, L shaped steel profile, Waterproof layer, Thermal insulation in glass fiber, Vapor barrier, Double internal concrete wall, Aluminum window frame with double glass
- 5. INTERNAL FLOOR Cladding in wooden slats towards the river and cladding in cement resin towards the ancient building, Screwed concrete with thermal coils embedded in the jet, EPS panel, Vapor barrier, Thermal insulation in glass fiber panel, Waterproof layer
- 6. EXTERNAL FLOOR Sandstone blocks, Water inlet channel, Waterproof layer
- 7. FOUNDATIONS Horizontal structure in reinforced concrete, Screwed concrete, Granular mixed layer, Grade beam in reinforced concrete, Foundation



Exhibition hall of medieval clothes

Exhibition hall of fine fabrics

Exhibition entrance and infopoint

Floodlight and left access room

DETAIL

Scale 1:50