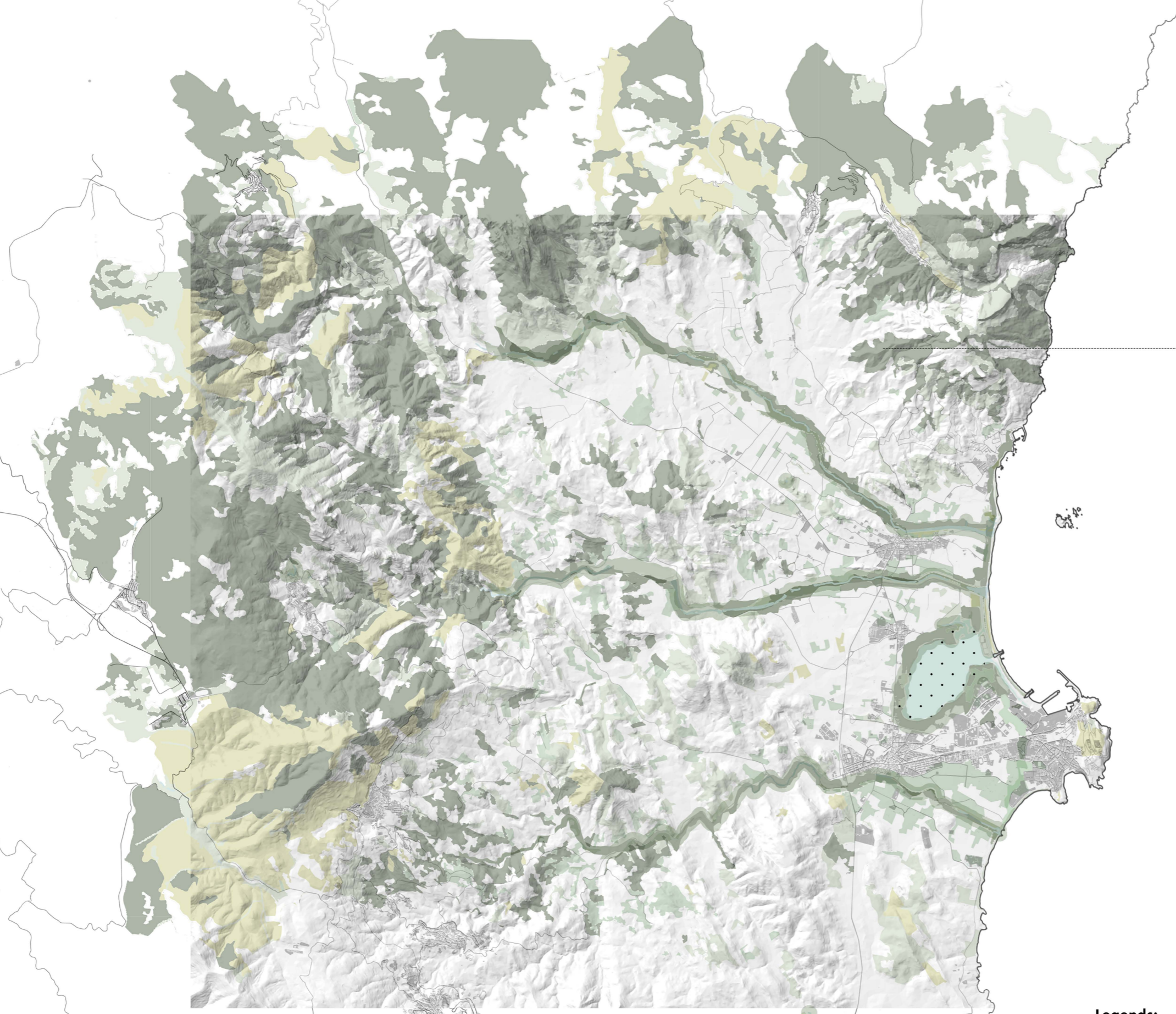


Reconnection of the Ecological Hubs



- Legends:**
- ARTIFICIAL WOODS
 - NATURAL WOODS
 - LAGOON
 - FAUNA
 - CLUSTER OF TREE PATCHES
 - SCRUBS
 - RIVER

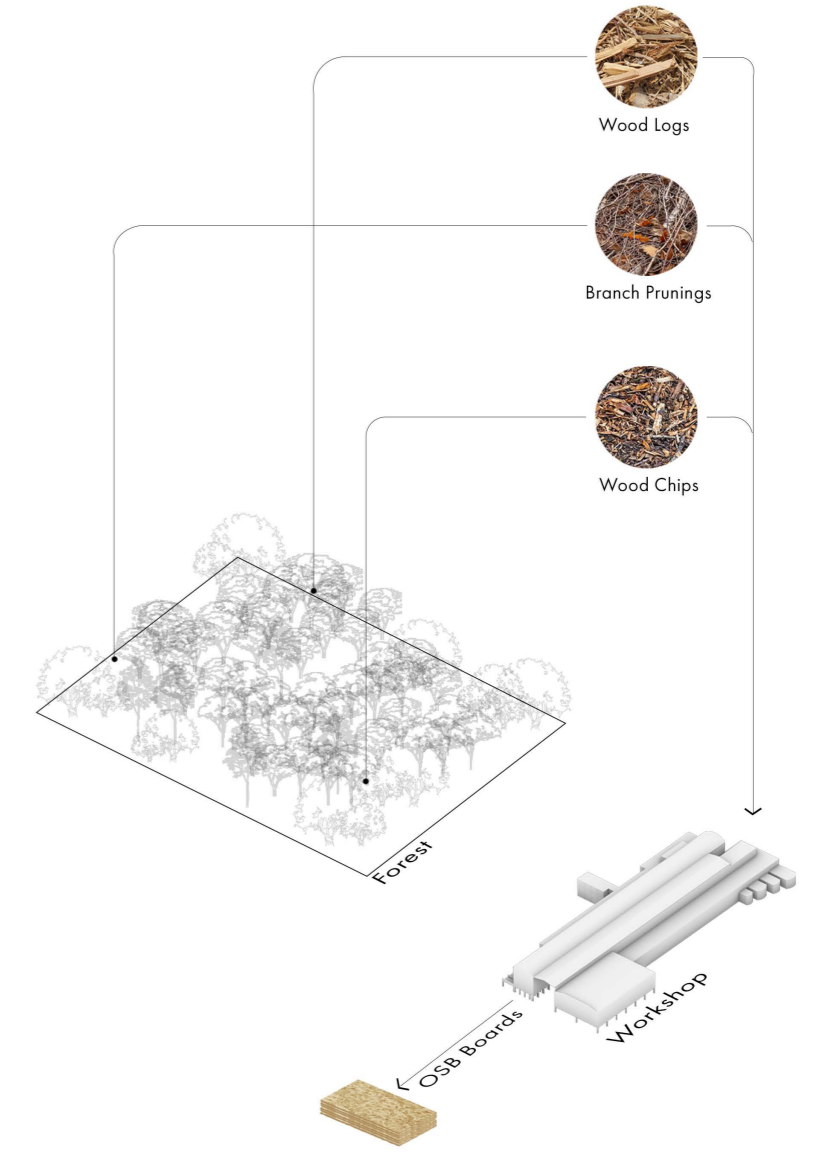
The Biodiversity Flow

Reconnecting ecological Hubs

The Paper Mill is adjacent to a Biodiversity interest area that hosts a variety of fauna and flora. But due to deforestation and excessive agricultural use of the surrounding landscape, it has lost connection to the larger ecological hub of the western part. To approach this issue the strategy will activate the riverbeds that flow from the large ecological hub to the lagoon as ecological corridors to reconnect the two hubs together. These corridors are resilient elements with multiple functions that will serve the city dwellers and also biodiversity. The corridor already is vegetated but in a patchy manner with disconnections with a distance of more than 300 meters which is the maximum possible disconnection for fauna movement. The design will reconnect these patches by adding packets of native trees and shrubs along the corridors.

1. Parks and Forest cleaning and tree pruning

At the same scale forest pruning and cleaning are a great source of biomass that will be used inside the site area to produce OSB wooden product which could be created from wood waste.



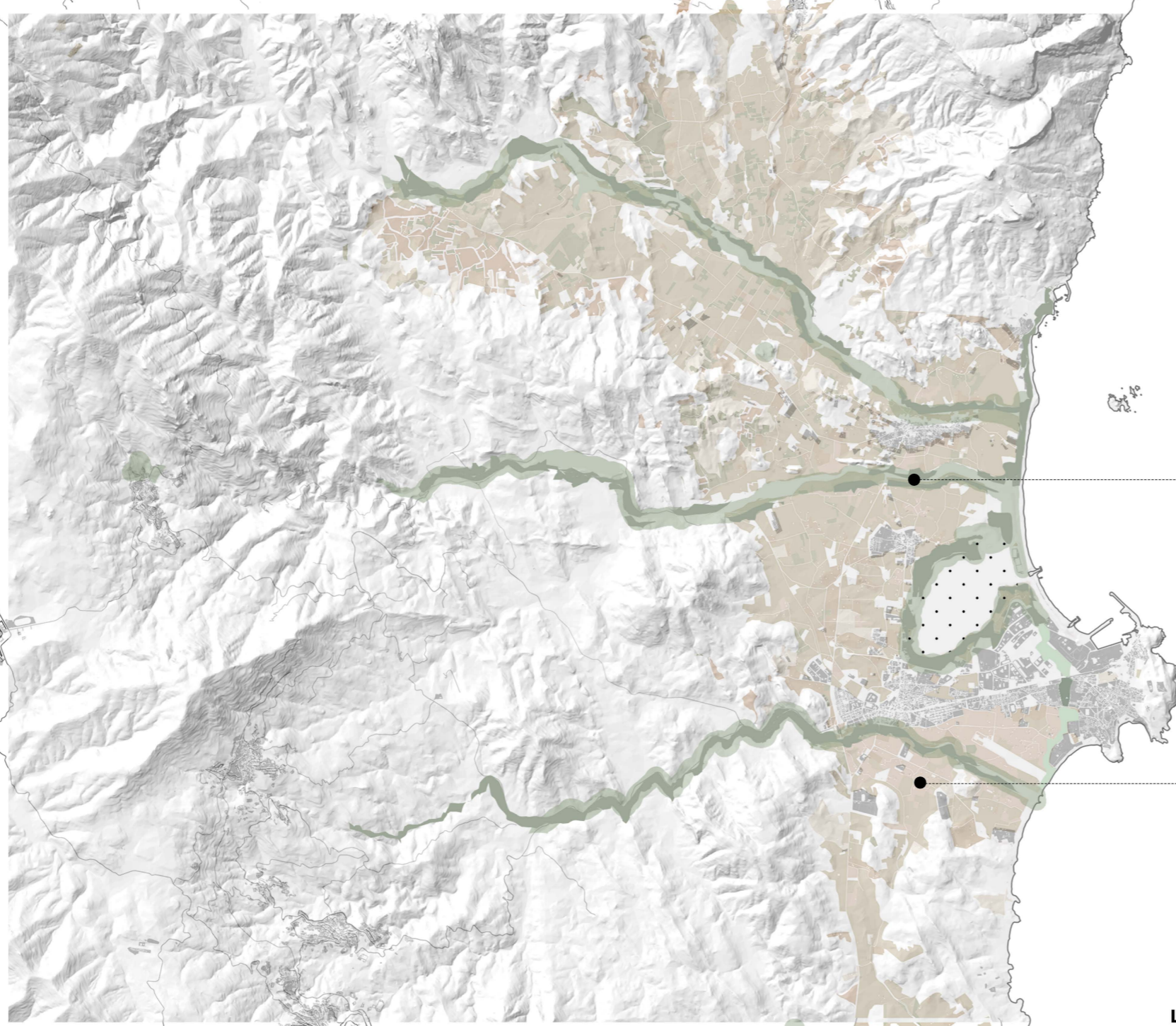
The biomass of forest cleanings and tree prunings will be collected in the site and will be transformed to recycled wooden panels.

2. Tortoli Lagoon Natural water Improvement

The lagoon of tortoli is a fauna interest area with migratory birds (Pink Flamingo) that is currently destination to agricultural run-offs from Ogliestra Plain. The buffer of the lagoon is also denaturalizing that causes a threat to the fauna.



Ogliestra Plain Biomass Collection System



- Legends:**
- Agrarian Lands
 - Existing Tree Patch
 - Area of Corridor Reforestation
 - Lagoon
 - City

3. The Corridor vegetation Improvement



4. Agri-Residue Collection

