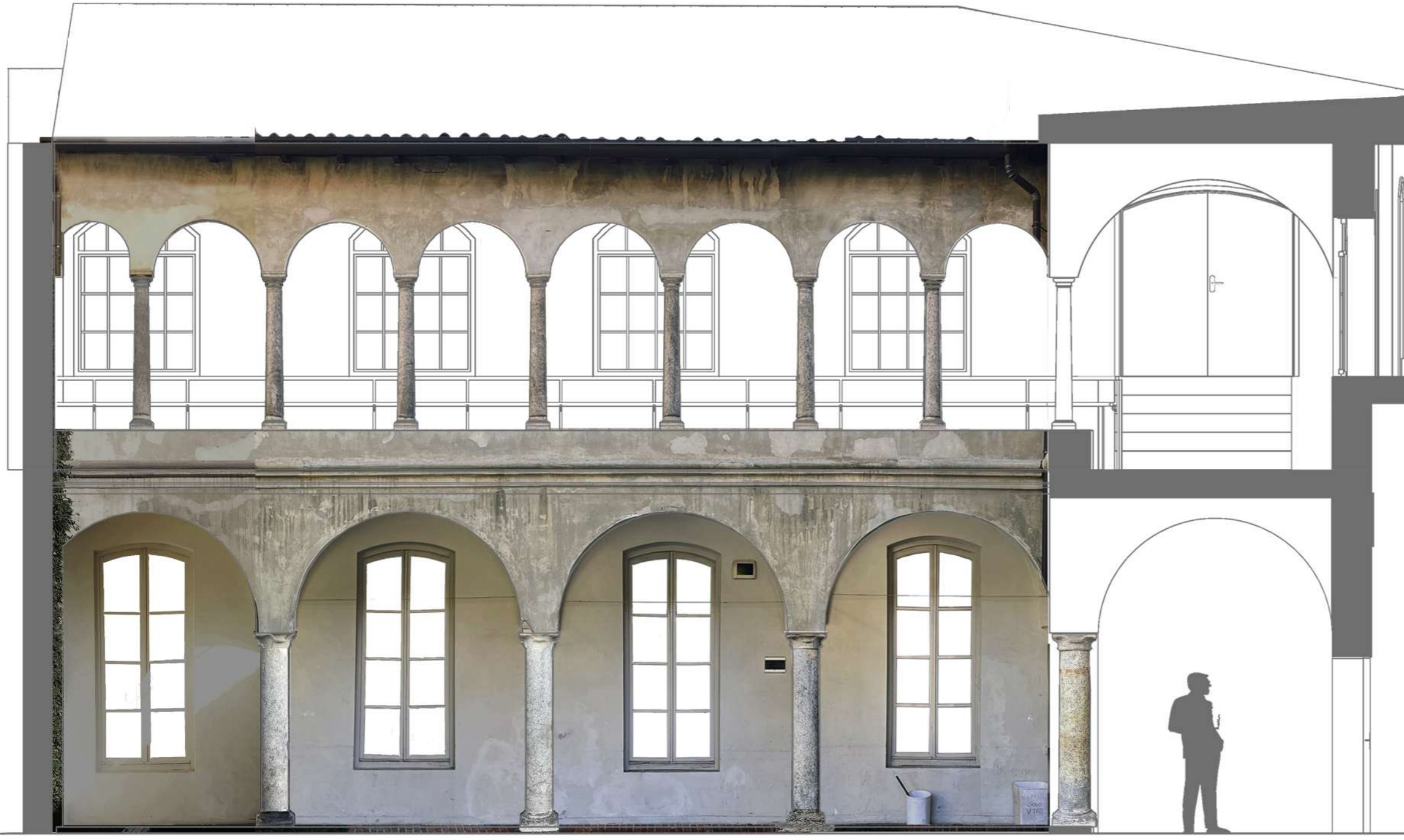
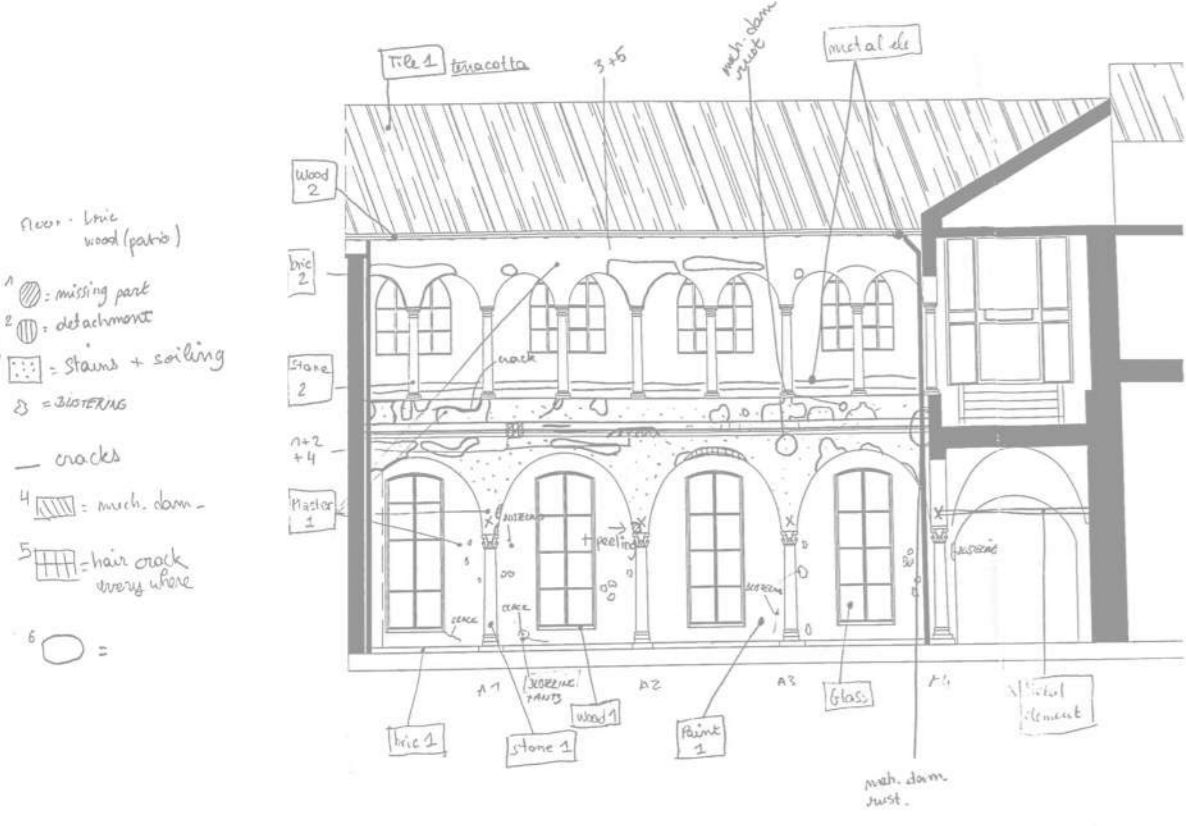


# RESTORATION

In the history of Società Umanitaria building, a restoration work occurred in the 90's. The work has been mainly made on the plasters, which have been cleaned, repaired and, for some of them, painted.

Unfortunately, the work marked the architecture in time. The technics left some clear decays on the work itself but also on the original materials. The products used were not fitting the cloister's components and it created deterioration. After a deep analysis of the cloister's structure and the existent materials, a different method of intervention has been chosen to repair and restore Società Umanitaria. The intervention is presented on Chiostro della Memoria.

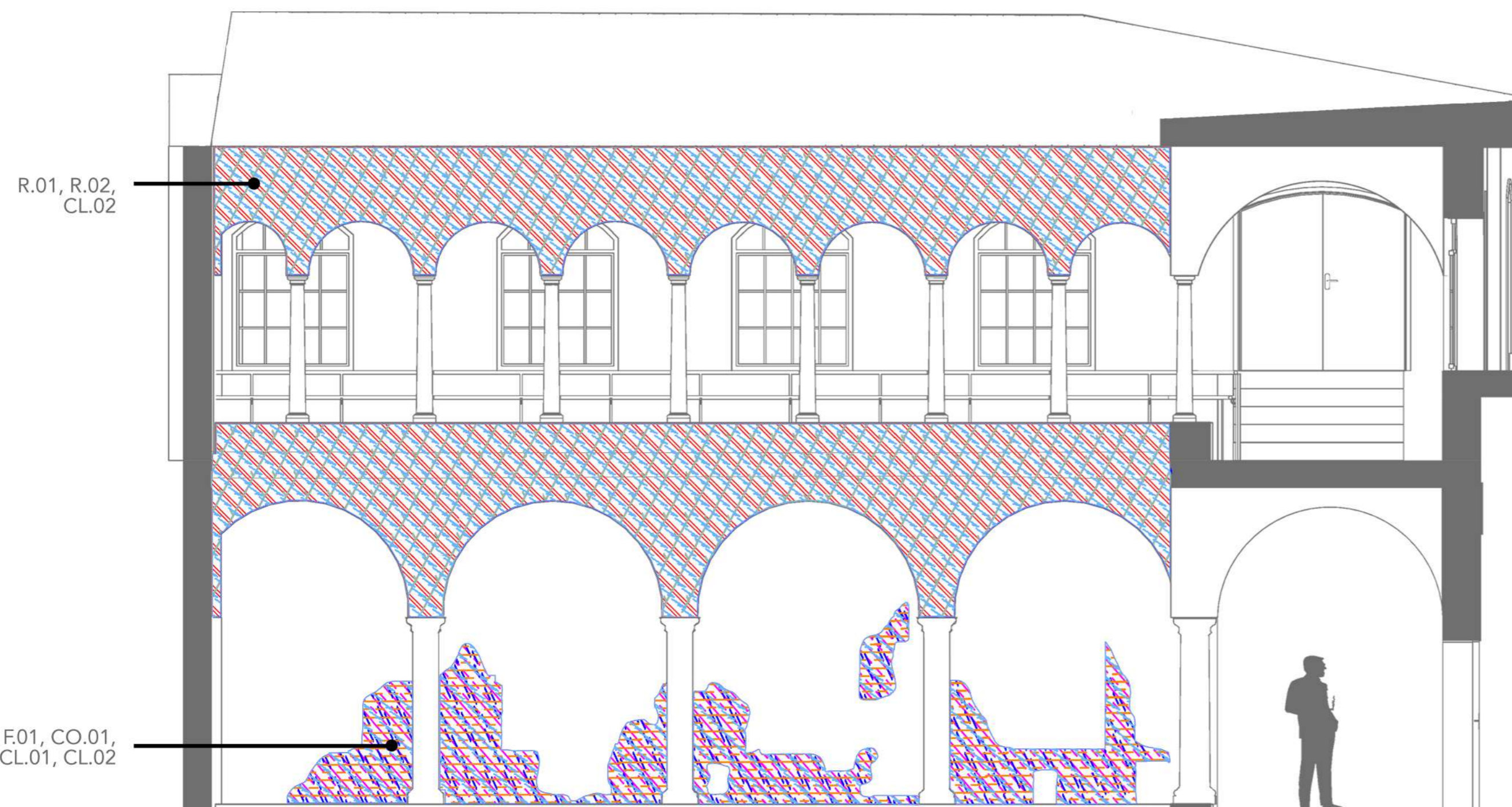
The exterior plaster will be entirely removed and replaced by a plaster which fits the original brick structure. The interior plaster will be restored taking care of the humidity and rising damp problem. Concerning the columns in serizzo stone, they will be cleaned and their mastic will be replaced by a stone fitting mortar.



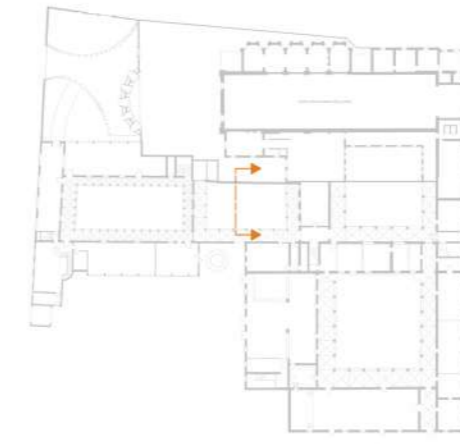
ORTHOPHOTO  
1/50



MATERIAL AND DECAY MAPPING  
1/50



INTERVENTION MAPPING  
1/50



## MATERIALS:

- PL: PLASTER
- PP: PAINTED PLASTER
- DP: DECORATIVE PLASTER
- BR: BRICKS
- SS: SERIZZO STONE
- WO: WOOD
- MA: MASTIC
- IP: INTEGRATION PATCH

## DECAYS:

- 1: Superficial cracks
- 2: Detachment
- 3: Stains
- 4: Mechanical damage
- 5: Craquelé
- 6: Discoloring
- 7: Blistering

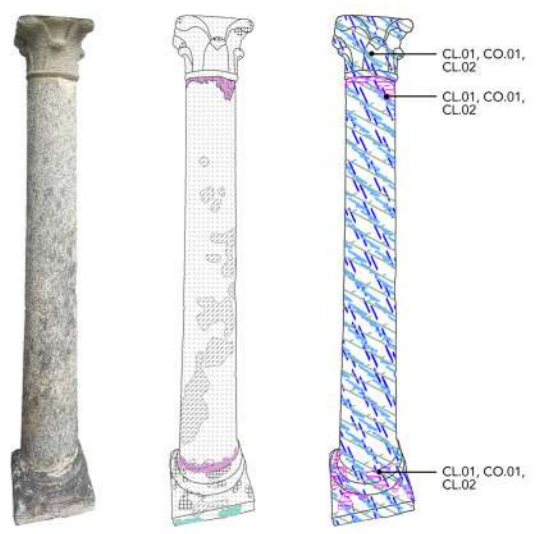
## PHASE 1:

- R.01 Removal of the plaster and the integration patch
- F.01 Find the source of possible water infiltration
- R.02 Removal of the excess plaster residue and clean the surface of the brick

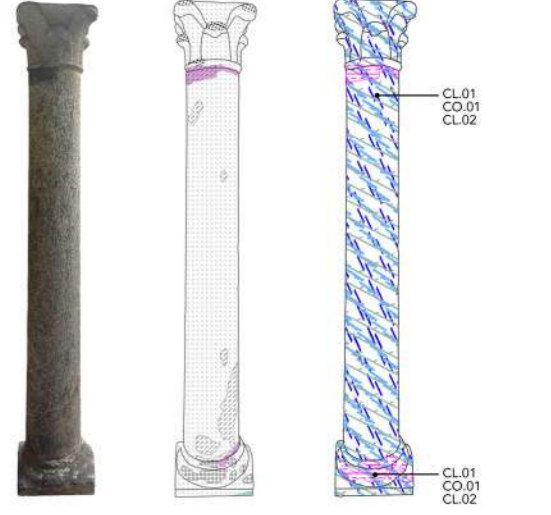
## PHASE 2:

- CO.01 Appliquence of a patching material or consolidation product
- CL.01 Clean the surface
- CL.02 Final cleaning of the surfaces

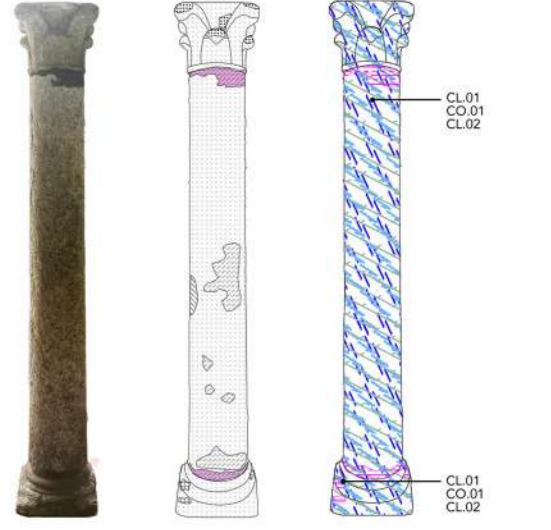
## A1 Front side



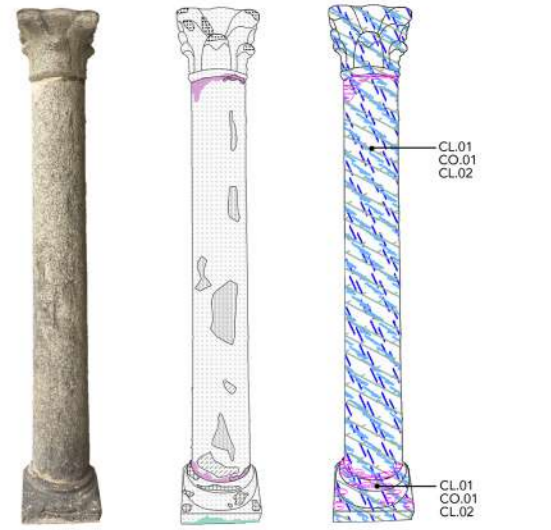
## Left side



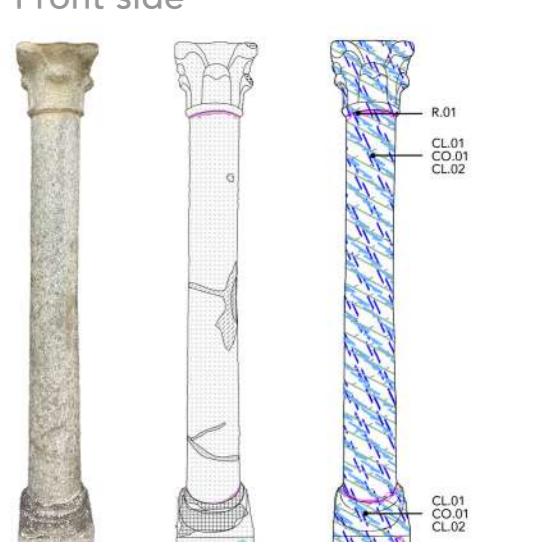
## Back side



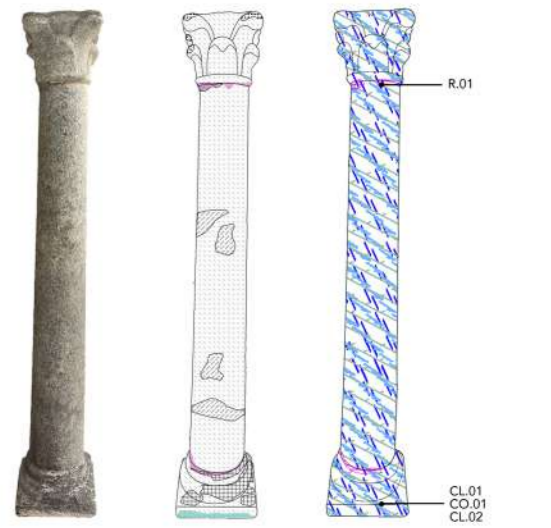
## Right side



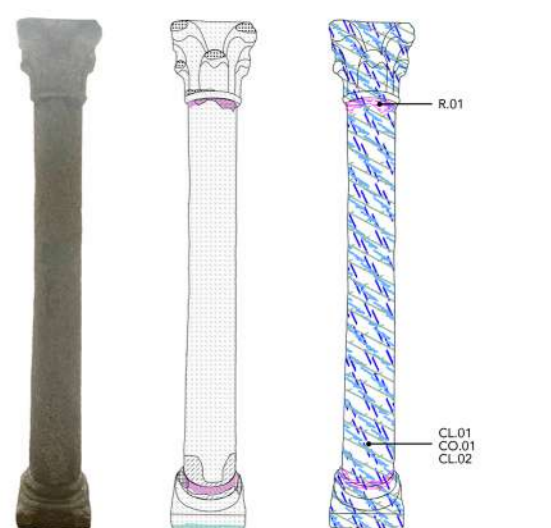
## A2 Front side



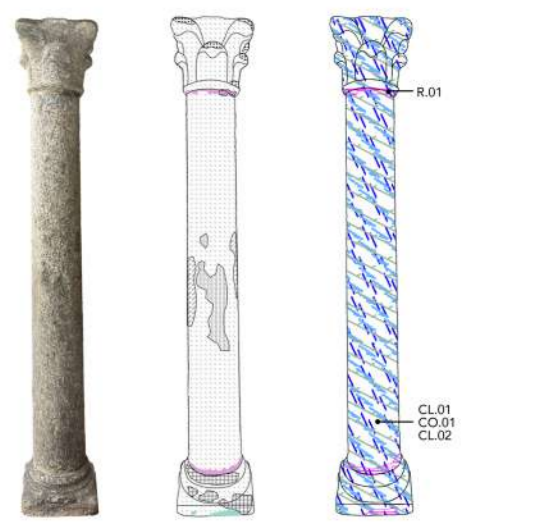
## Left side



## Back side



## Right side



## COLUMN ANALYSIS 1/30

- MATERIAL:
- Mastic
  - Mortar
- DECAY:
- Erosion
  - Mechanical damage
  - Deposit
  - Craquelé
  - Discoloration
  - Stains
  - Efflorescence
  - Cracks
- PHASE 1:
- CL.01: Cleaning of the surface
  - R.01: Replace the mastic with a more stone fitting mortar
- PHASE 2:
- CO.01: Apply a patching material or consolidation product
  - CL.02: Finish with a final cleaning

