

The Rewilded Landscape

Spatial Experience



The Rewilded Landscape



Reclaimed Timber Seating

The seating on the site reuses salvaged material while storing biogenic carbon. Left untreated and weather naturally, it reduces material demand and integrates quietly into the landscape.



Permeable Paving w/ Recycled Concrete

Constructed from reclaimed demolition material, the permeable paving system reduces embodied carbon while allowing rainwater infiltration. The ground remains hydrologically active, mitigating runoff and restoring natural water cycles.



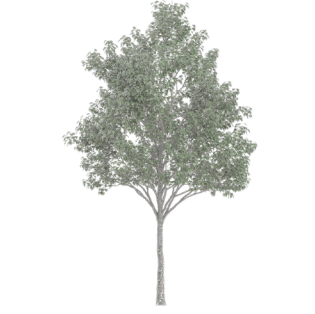
Prunus spinosa (Blackthorn)

A resilient species found along rural field boundaries throughout northern Italy. Its thorny growth forms protective habitat for small mammals and birds, strengthening biodiversity corridors.



Quercus robur (English Oak)

Native to lowland forests areas across the Po Valley, this oak dominated floodplain & mixed deciduous woodlands in northern Italy. It supports exceptionally high biodiversity (insects, birds, fungi) and establishes long-term canopy structure. Its deep roots stabilize soil while providing substantial carbon sequestration and urban heat mitigation.



Populus alba (White Poplar)

Common along rivers and disturbed soils in Lombardy, this fast-growing species tolerates compaction and poor substrates, conditions typical of post-industrial sites like Rogoredo. Its rapid establishment provides early shade and wind buffering while initiating ecological succession.



Bird Habitat Zones

Layered shrubs and native canopy trees create nesting, shelter, and food sources for regional bird species. These dense edge ecologies reinforce biodiversity corridors and reconnect urban margins to surrounding natural systems.



Community Pavilions

Designed as reversible structures, the pavilions can be assembled & disassembled for educational programs & community use. This temporality minimizes ground impact while reinforcing the park as an adaptable, evolving landscape rather than a fixed object.



Natural Organic Pathway

Unpaved and minimally stabilized, the pathway follows existing desire lines through the landscape. Its permeable surface reduces material intervention while preserving soil health & ecological continuity.



Bromus erectus (Upright Brome)

Native to Lombardy's calcareous grasslands, this grass thrives in dry, nutrient-poor soils common in post-industrial sites. Its resilience allows it to establish structure with minimal maintenance, supporting natural succession.



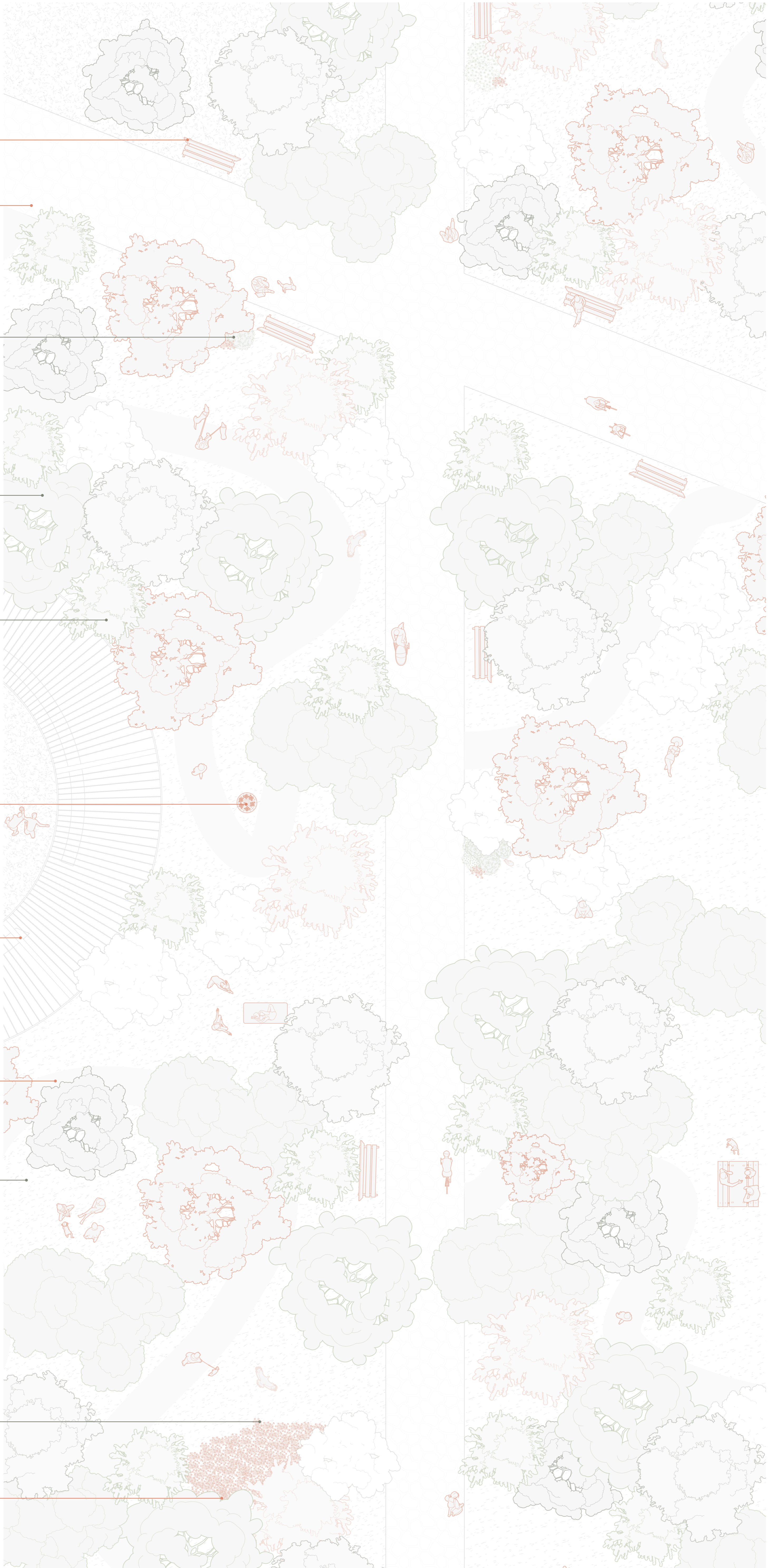
Papaver rhoeas (Common Poppy)

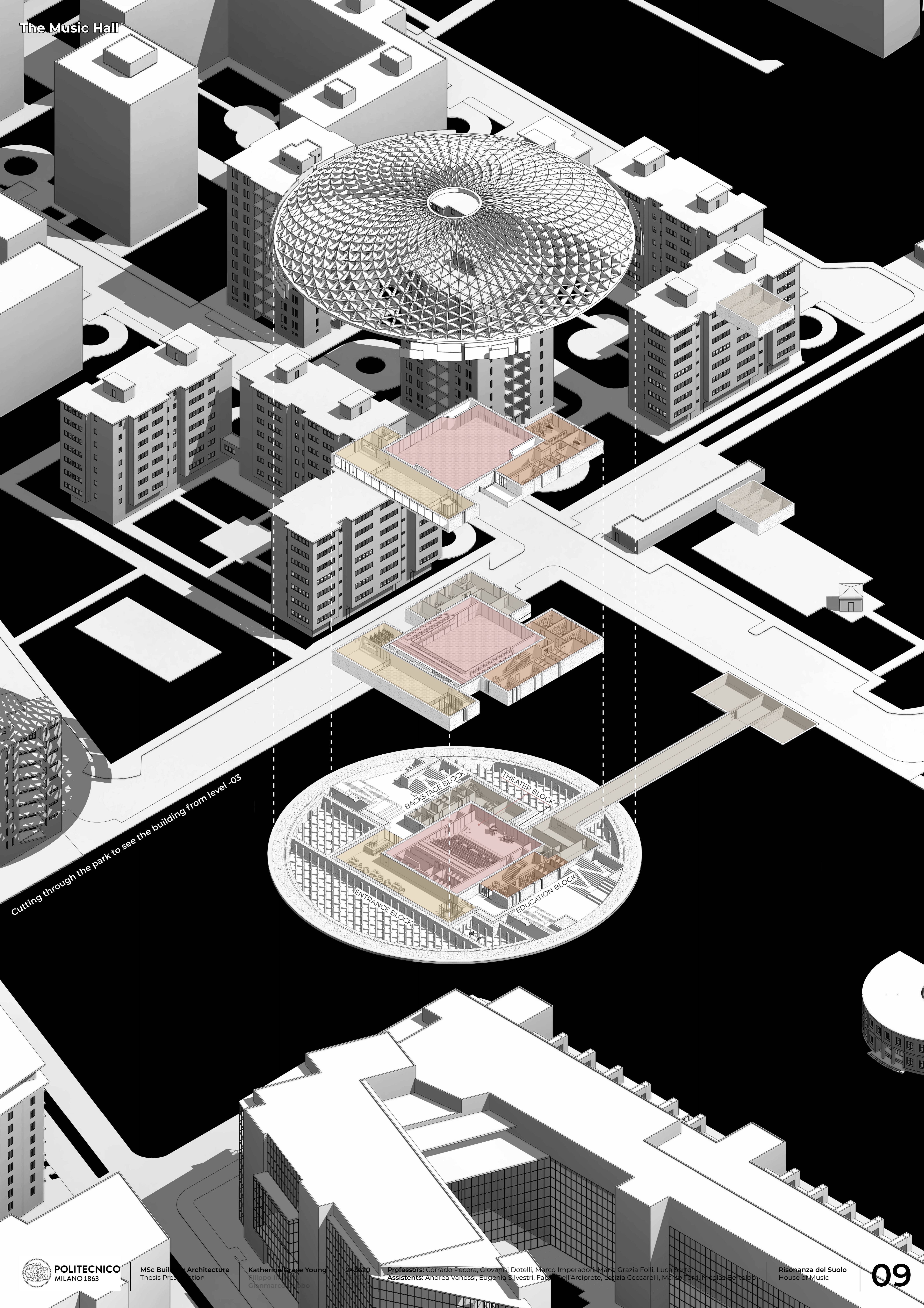
Iconic to northern Italian agricultural fields. Thrives in disturbed soils, making it ideal for regenerating post-industrial ground. Supports pollinators and symbolizes spontaneous landscape reclamation.



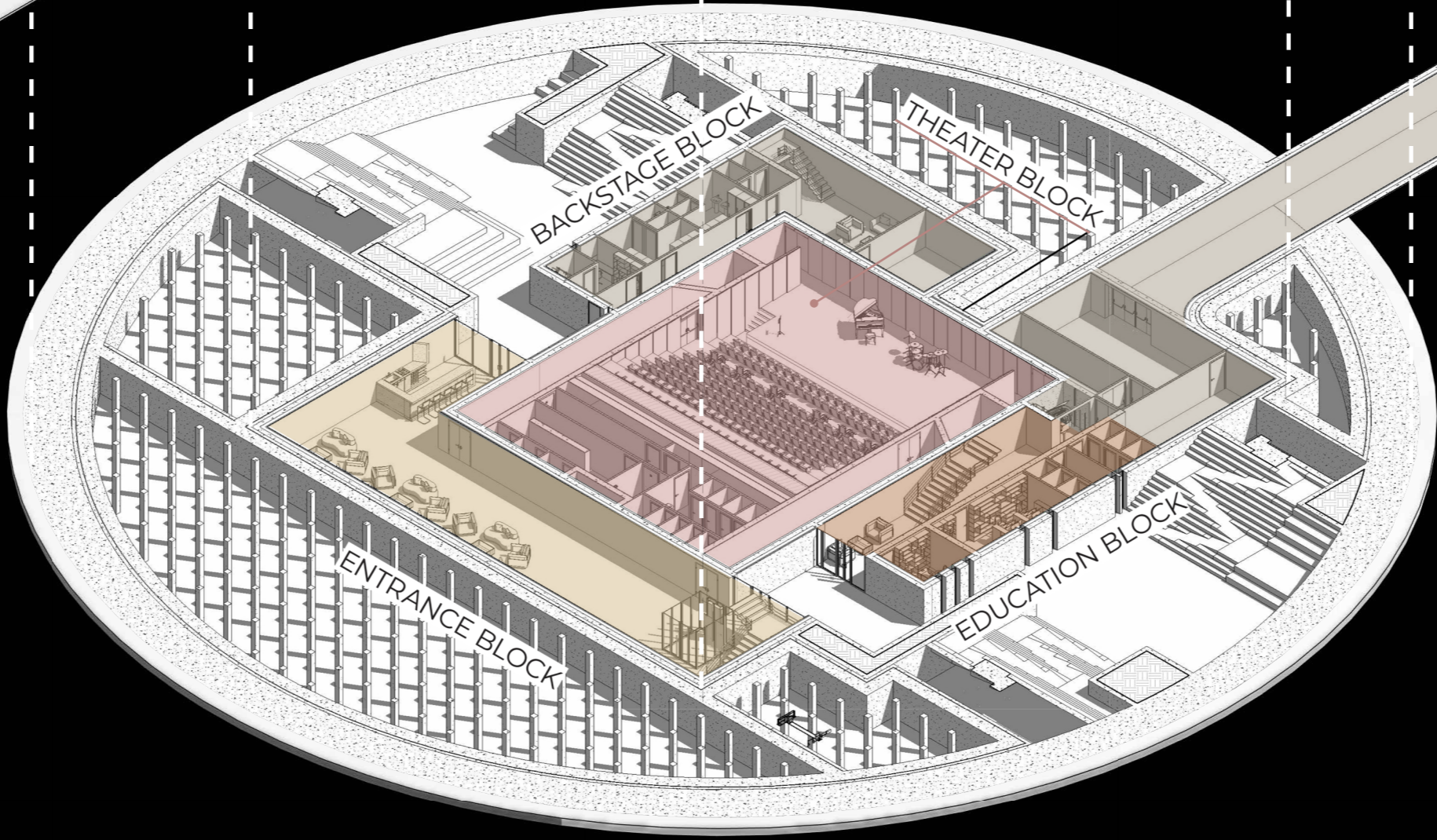
Pollinator Garden

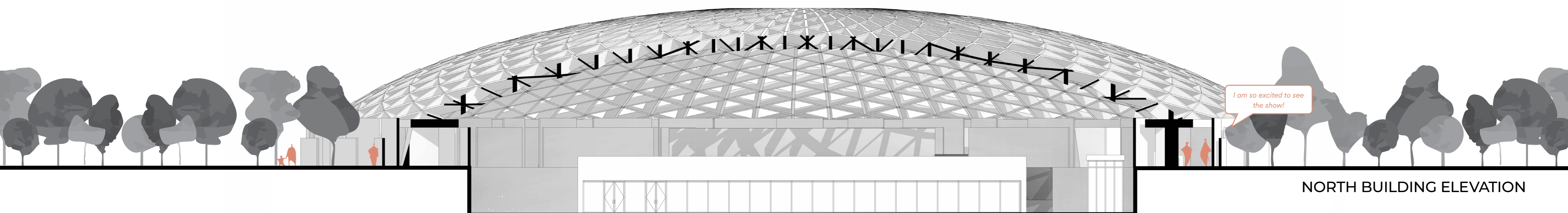
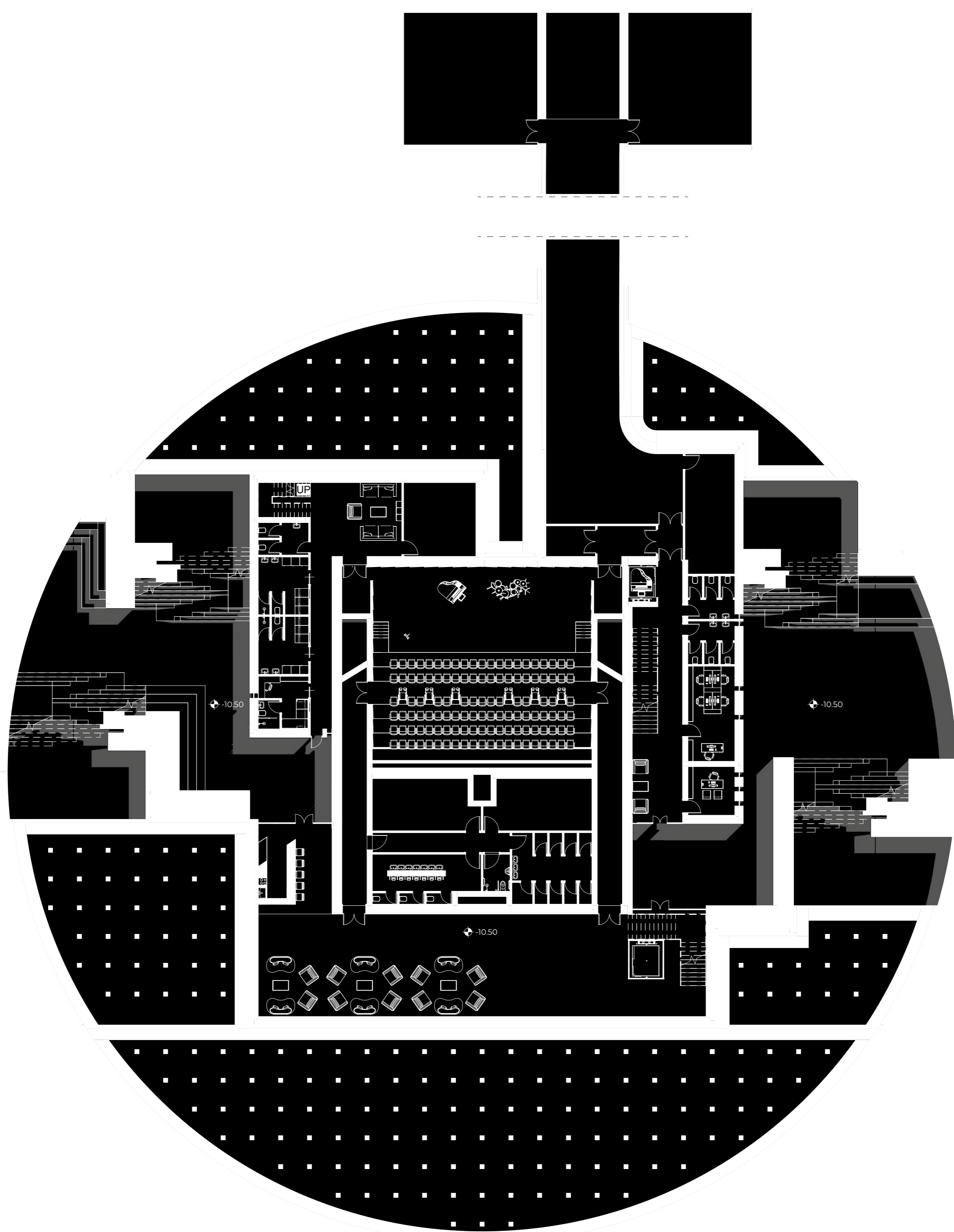
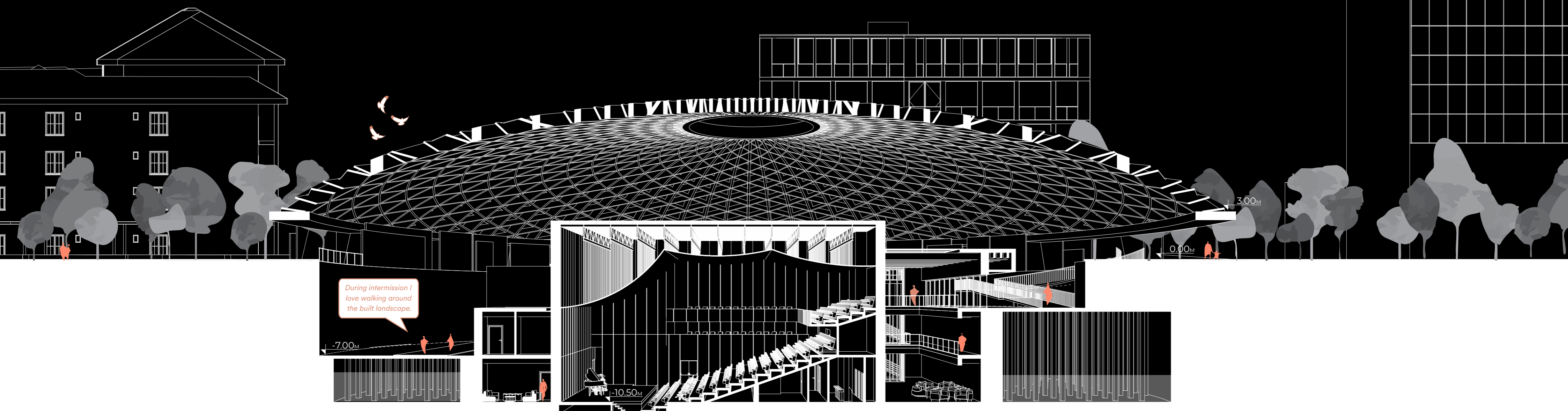
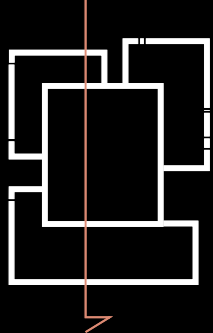
Composed of native Lombard meadow species, the pollinator garden strengthens local bee and butterfly populations. Adapted to the Po Valley climate, it requires minimal irrigation while increasing seasonal biodiversity and ecological resilience.

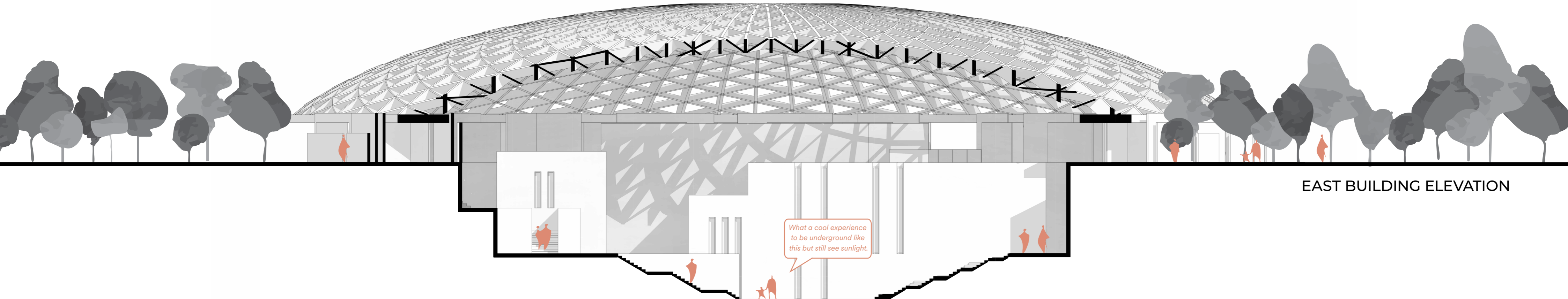
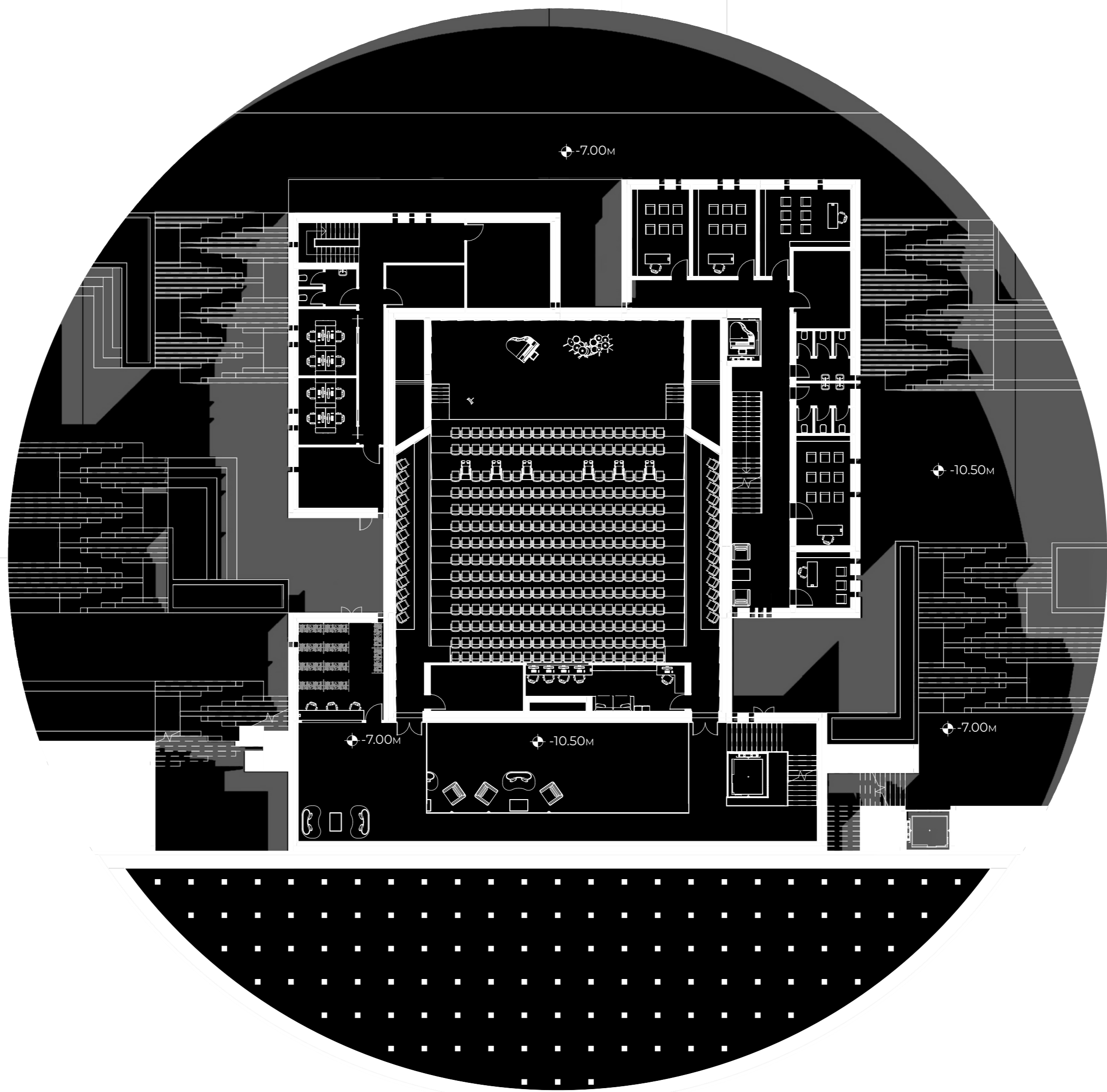
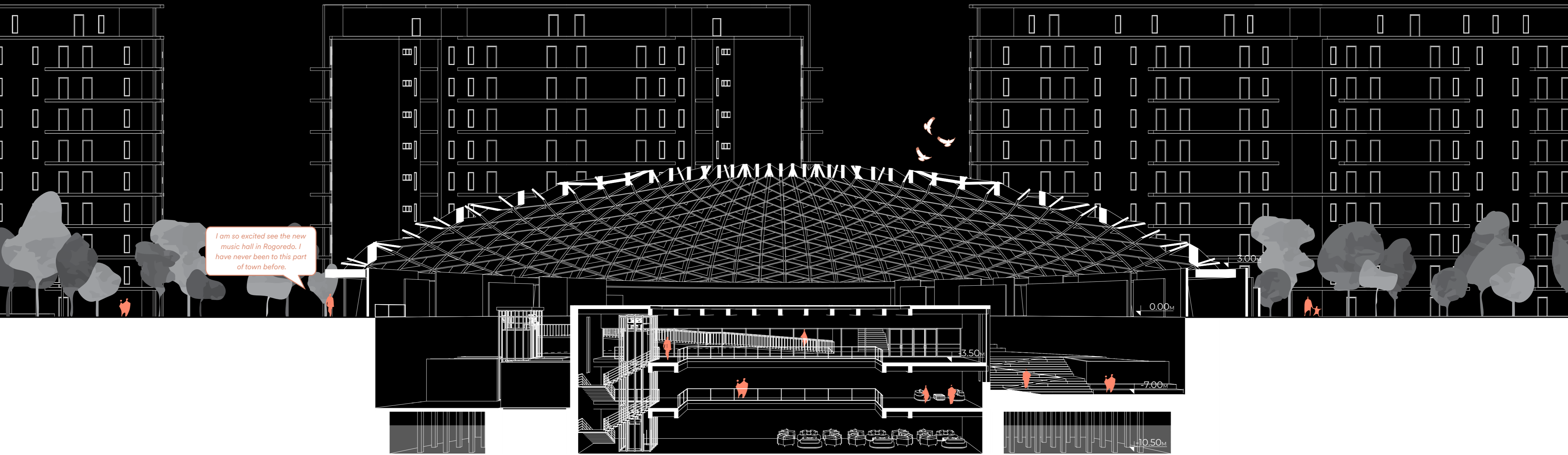
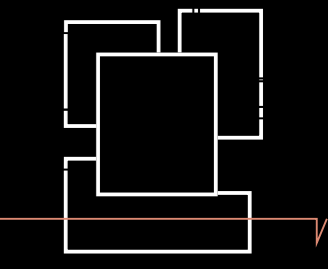




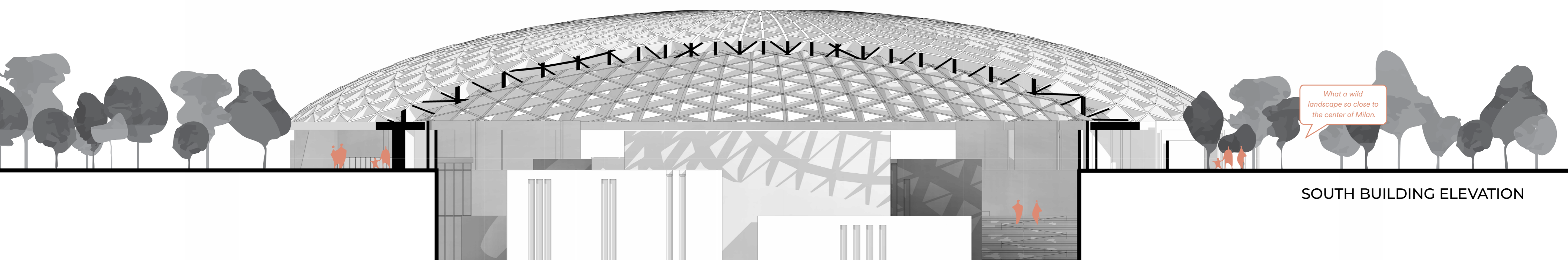
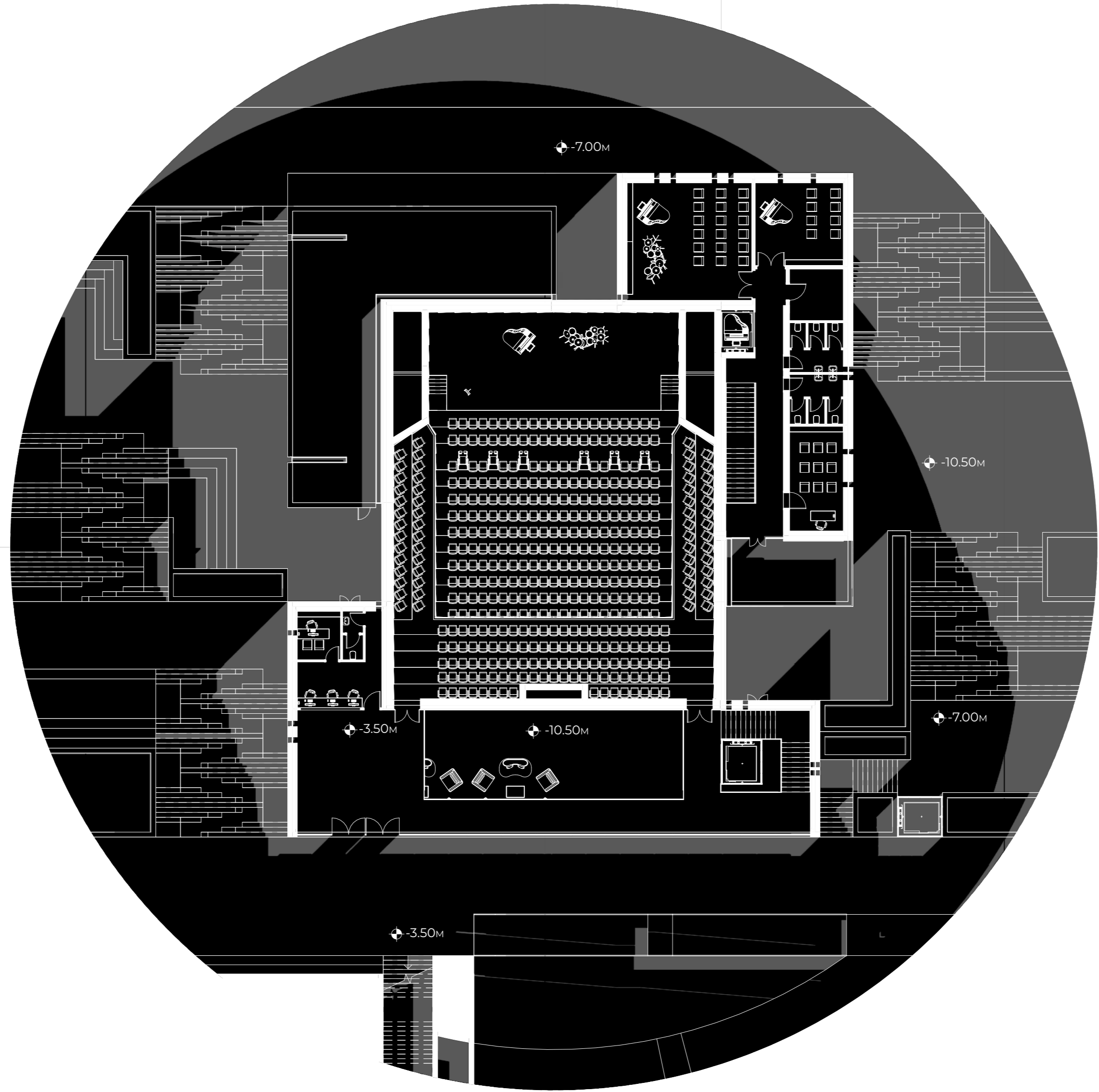
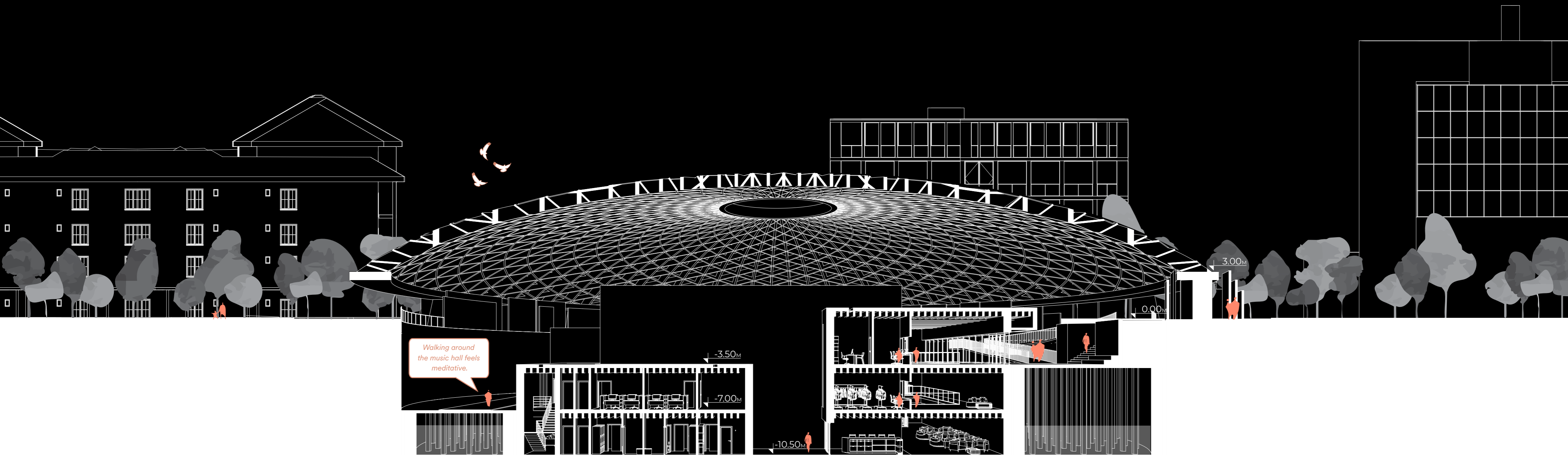
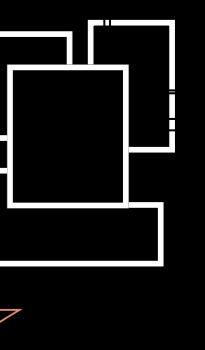
Cutting through the park to see the building from level -03







EAST BUILDING ELEVATION



SOUTH BUILDING ELEVATION