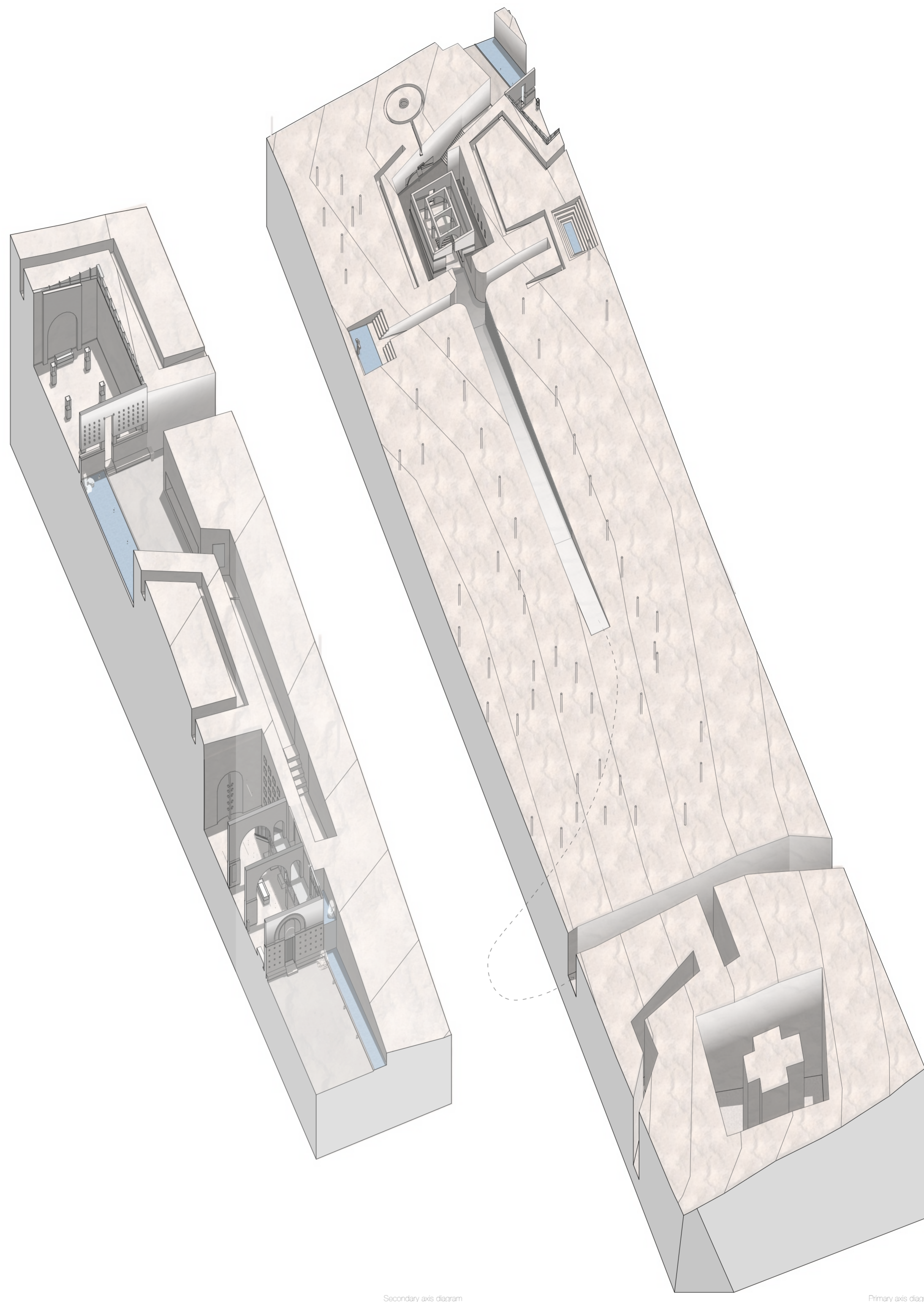


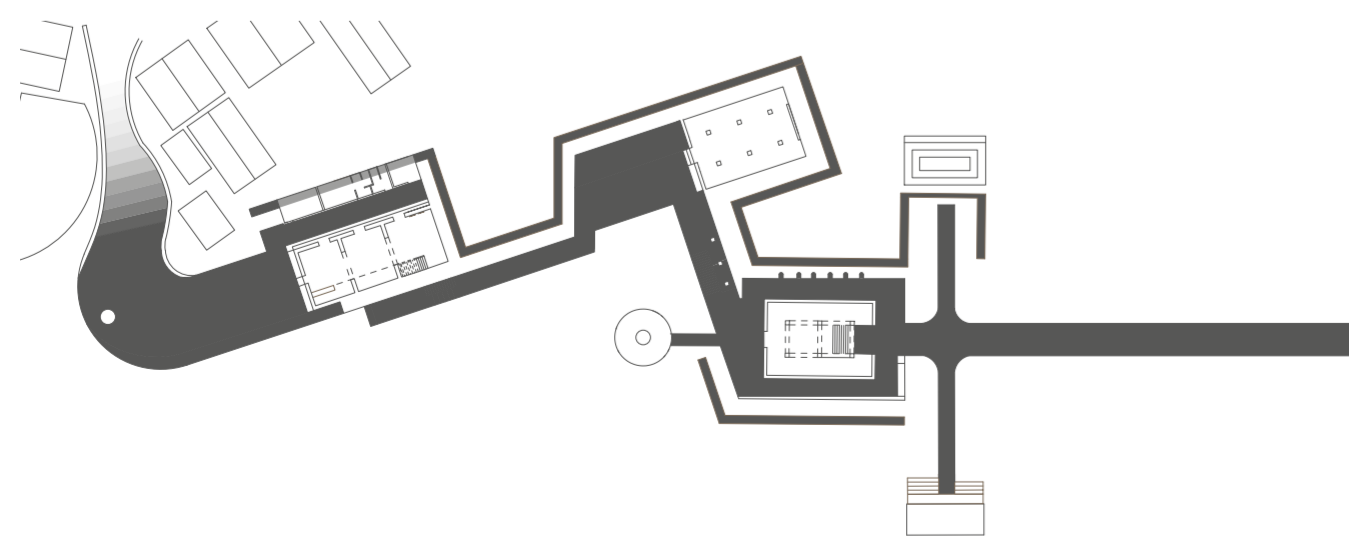
PROJECT INTRODUCTION

Born from the idea of a museum which expresses the trench, LIMES is a project which descends into a subterranean level. Trenches are commonly used as a design device by the Zagwe Dynasty. They connect the different churches and groups. A design decision was made to place the project along two axis's. A primary and secondary one. One commences a journey along the secondary axis which is orientated in the direction of Mount of Olives, a site of significance where Jesus was said to have ascended into heaven. A slow decent gives rise to the immersion of an underground landscape, with the sky exposed. B1 and B2 are interior spaces located along this axis. The Primary axis is orientated in the direction of Biet Giorgis, One of the rock-hewn churches connected to the complex. The Cross formation commonly seen throughout the complex as a motif inspired the overall excavation along this axis. One descends further into the earth's crust before an ascent into the main complex.

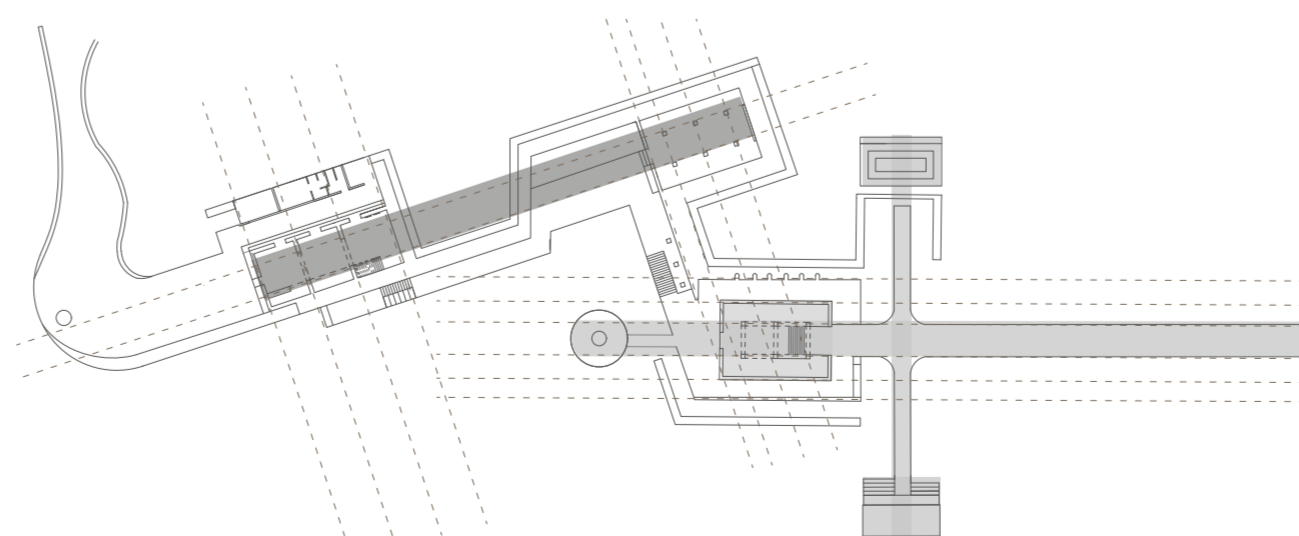


Secondary axis diagram

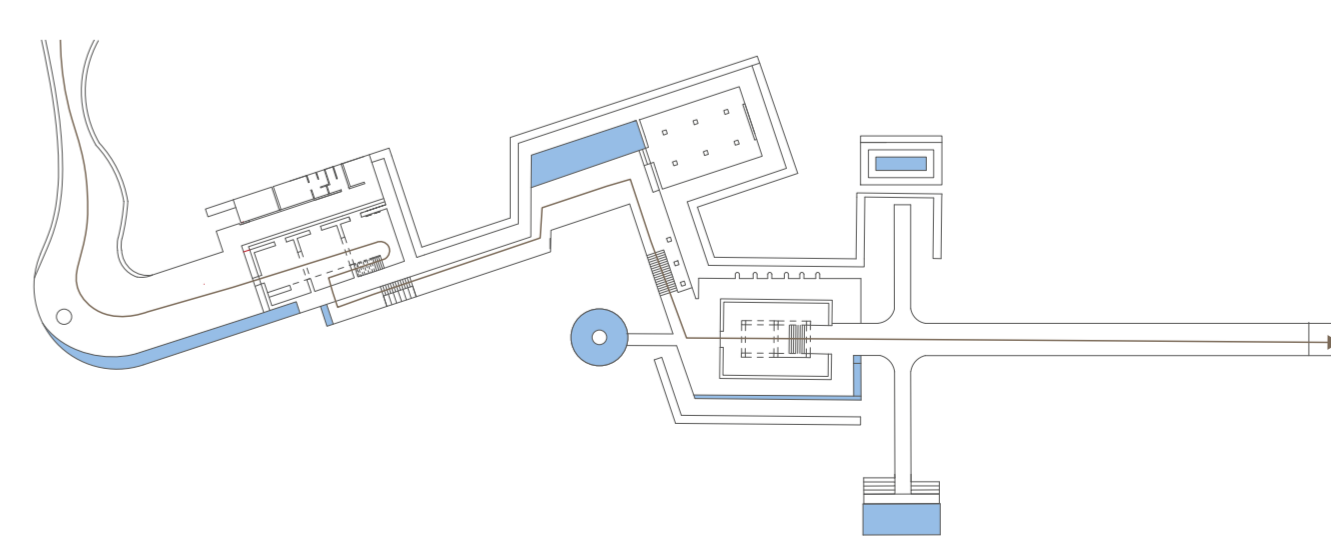
Primary axis diagram



-Trenches



- Form
- Proportion + direction



- Presence of water
- Route through museum