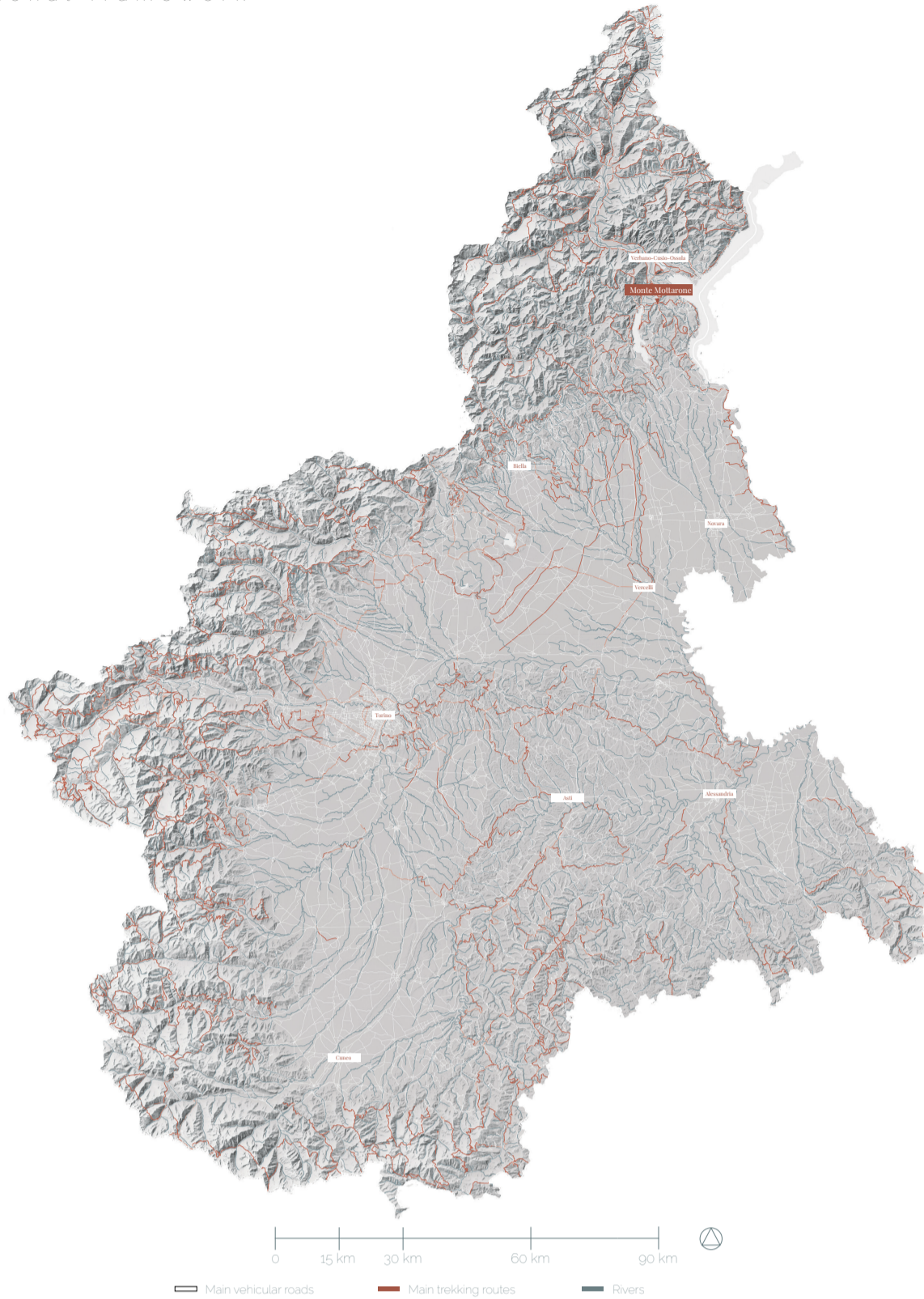


# MONTE MOTTARONE

## Design framework

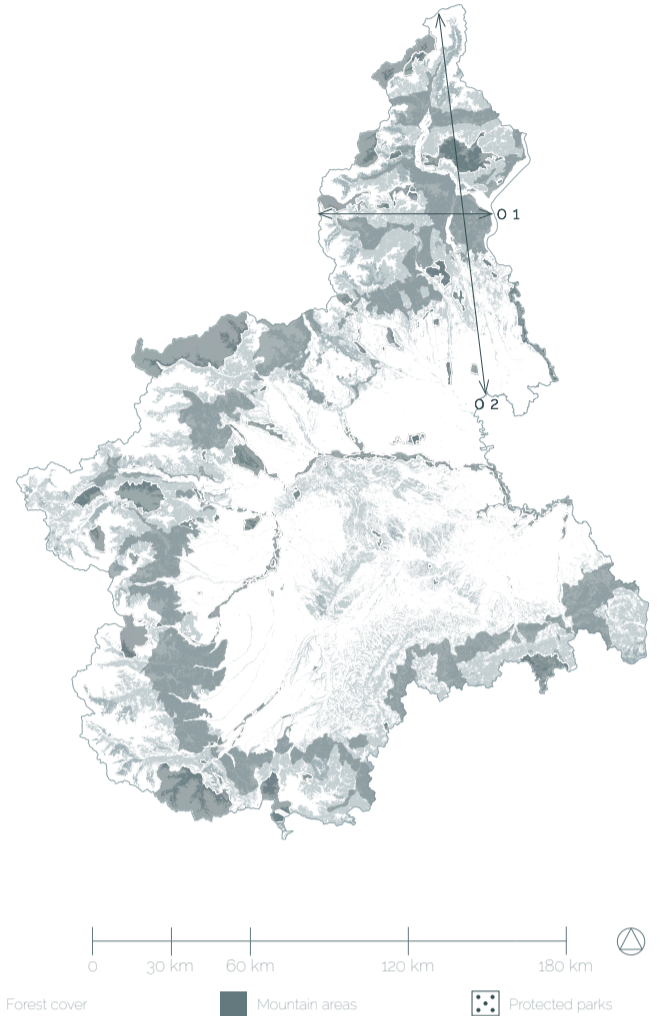
### Regional framework



Facculparchil is es eri beatectem nonectium volescipis possequ iduntur alitaspis doluptatem et offictotatem rent, tem dis mos es reic te voloren delentissum aut dessunt harum dolorep eruntescipsa pro et, tempore optur?

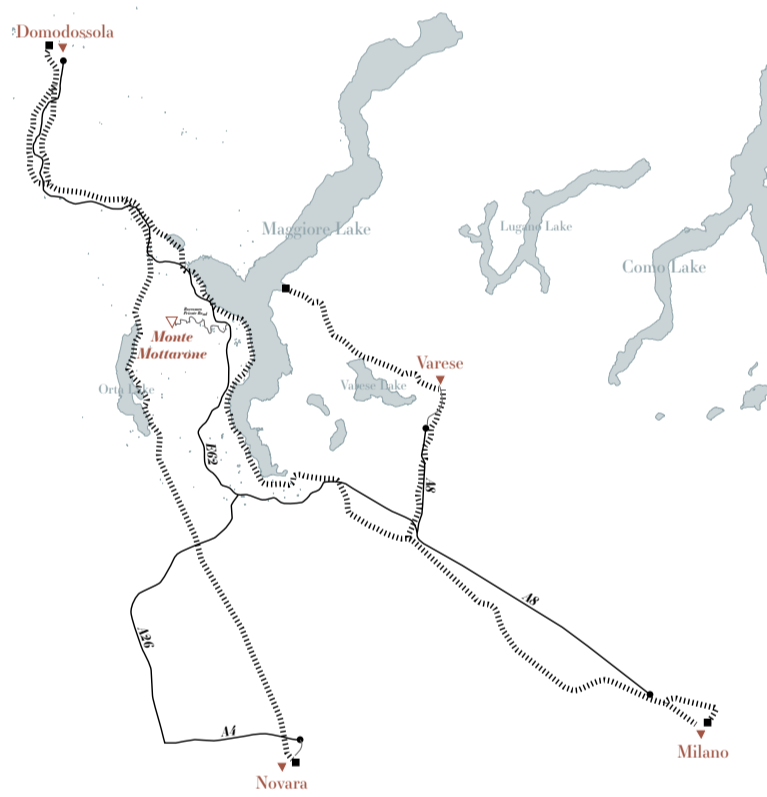
Porero ipitas eium est atuscis pelit inum viti arum ut re qui berore volorro tenimillabo. Cum, vid ulla voluptio qui quis quibust as et quiassi ut excesedis estem re dolorer ovidel ipsus sum faccaborio berestiat et re dolorei uscipsam evendes equibus apit dolorem qatur, que nusante aborendis ratum quo eum de volupta dollitet es nonse conseditat officieni ra voloriandem aut aut molore omnitatusam est, od quunt voloribus qui delliqu aeepedit amus dolut aut iumque laccus.

Con corpusam de nobit, sequentiam ratisit moluptius a coriamet ipit fuga. Nam fugiaes tiberrore consed elluptae versperiae ande nis voluptatis et laudamus assum nessima iostrum alibus aut ut eiumquas eos et explandae. Ut ute volent ipiendis quia



Ne venisi dolum quamendem laborio ruptatur sam apitatq uaecupidem ut fuga. Arum late recum qui rehenienia quiasit mos dolorum fuga. Itaepaenam dit, eaqui ommoluptas sam fugiassequis eos verchit ionsequia doloreh enihit, cupta debit

### Provincial framework



- From Milano**
- Public transportation: Train Milano - Domodossola (Stop: Stresa) ❌
  - Private transportation: A8/E62 Highway (Gravellona Toce) ➔ Borromeo Private Road
- From Varese**
- Public transportation: Train Varese - Gallarate (Stop: Gallarate) ➔ Train Gallarate - Domodossola (Stop: Stresa) ❌
  - Private transportation: A8 Highway (Milano) ➔ A8/E62 Highway (Gravellona Toce) ➔ Borromeo Private Road
- From Novara**
- Public transportation: Train Novara - Domodossola (Stop: Omegna) ❌
  - Private transportation: A4 Highway (Torino) ➔ A26/E62 Highway (Gravellona Toce) ➔ Borromeo Private Road
- From Domodossola**
- Public transportation: Train Domodossola-Milano (Stop: Stresa) ❌
  - Private transportation: E62 Highway (Milano) ➔ Borromeo Private Road

