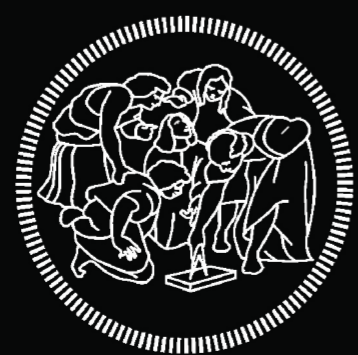




FUTURE VISIONS:

A VISUALIZATION FOR PUDONG DISTRICT, SHANGHAI, CHINA

A DISRUPTIVE MODEL TO ADDRESS THE ISSUE OF URBAN SPRAWL
AND THE UNSUSTAINABLE ECONOMIC EXPANSION
IN THE ERA OF MEGACITIES.



POLITECNICO
MILANO 1863

School of Architecture, Urban Planning and Construction Master of Science
in "Architecture - Built environment- Interiors"



XI'AN JIAOTONG UNIVERSITY
INNOVATION HARBOUR - CHINA

School of Human Settlements and Civil Engineering

SHANGHAI EXPANSION 1984 - 2019





METRO

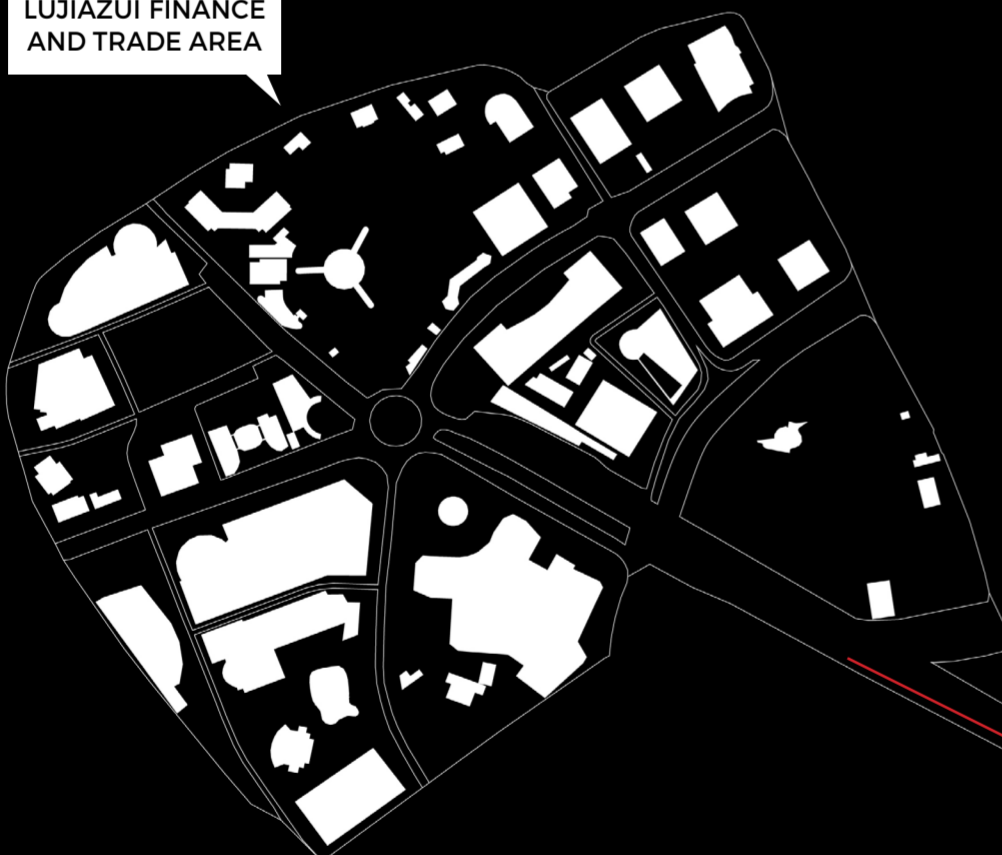
An aerial photograph of a city, likely Lujiiazui, showing a dense urban grid. A prominent red river winds through the city. A white outline highlights a specific area in the upper left quadrant, near the river. The text 'LUJIAZUI' is overlaid in white, bold, uppercase letters on the left side of the image.

LUJIAZUI

PLOTLINE



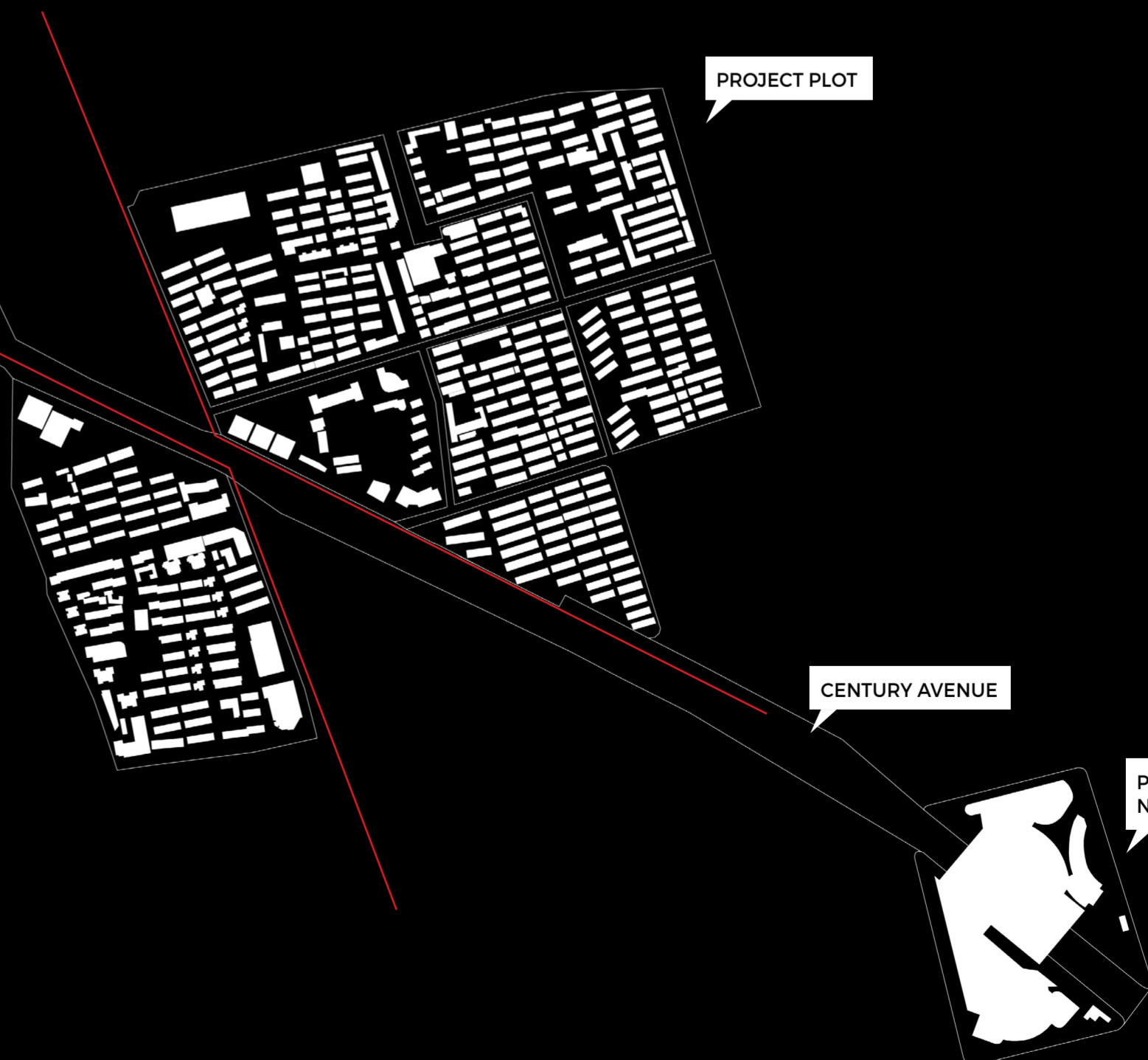
LUJIAZUI FINANCE
AND TRADE AREA



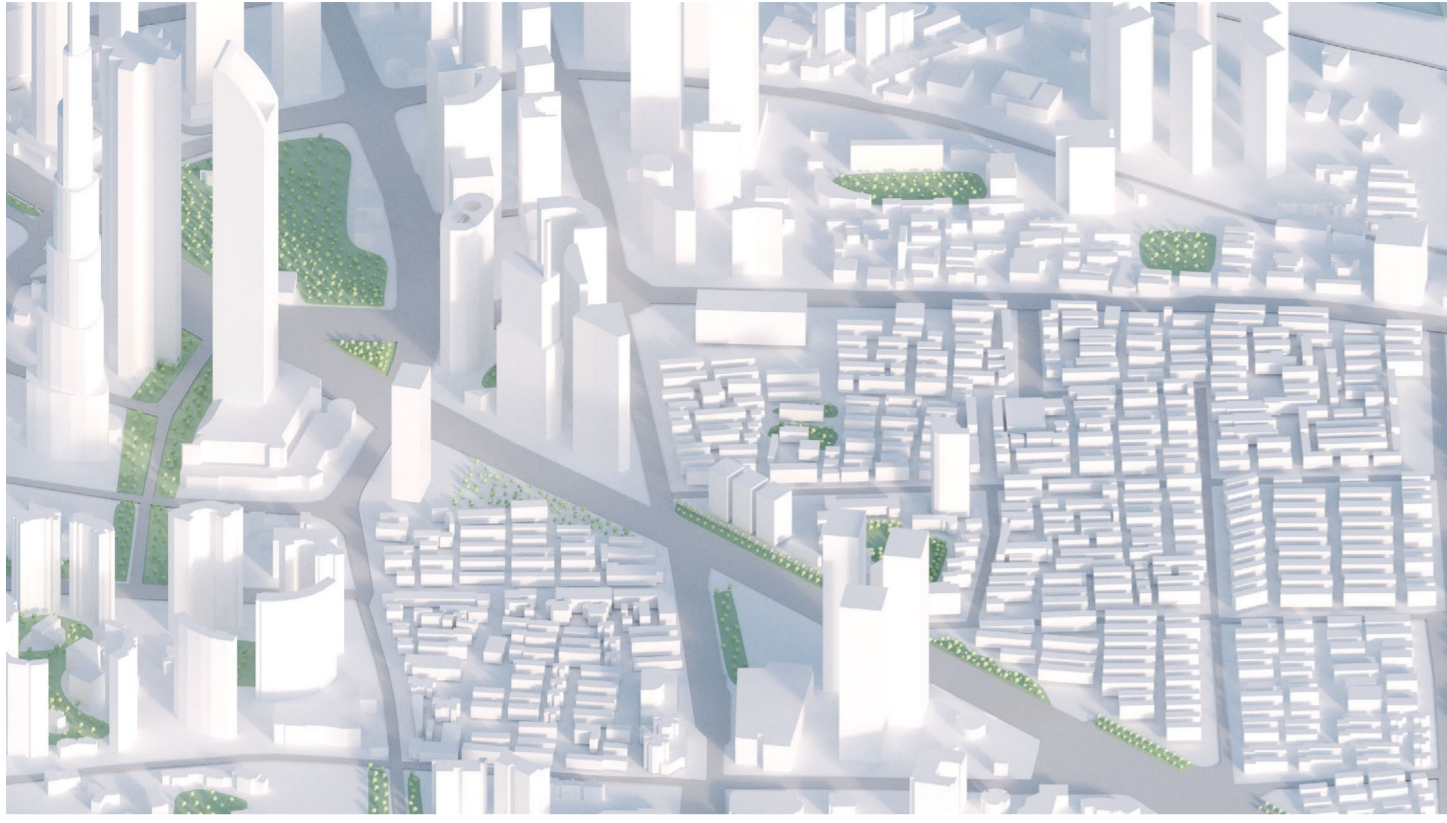
PROJECT PLOT



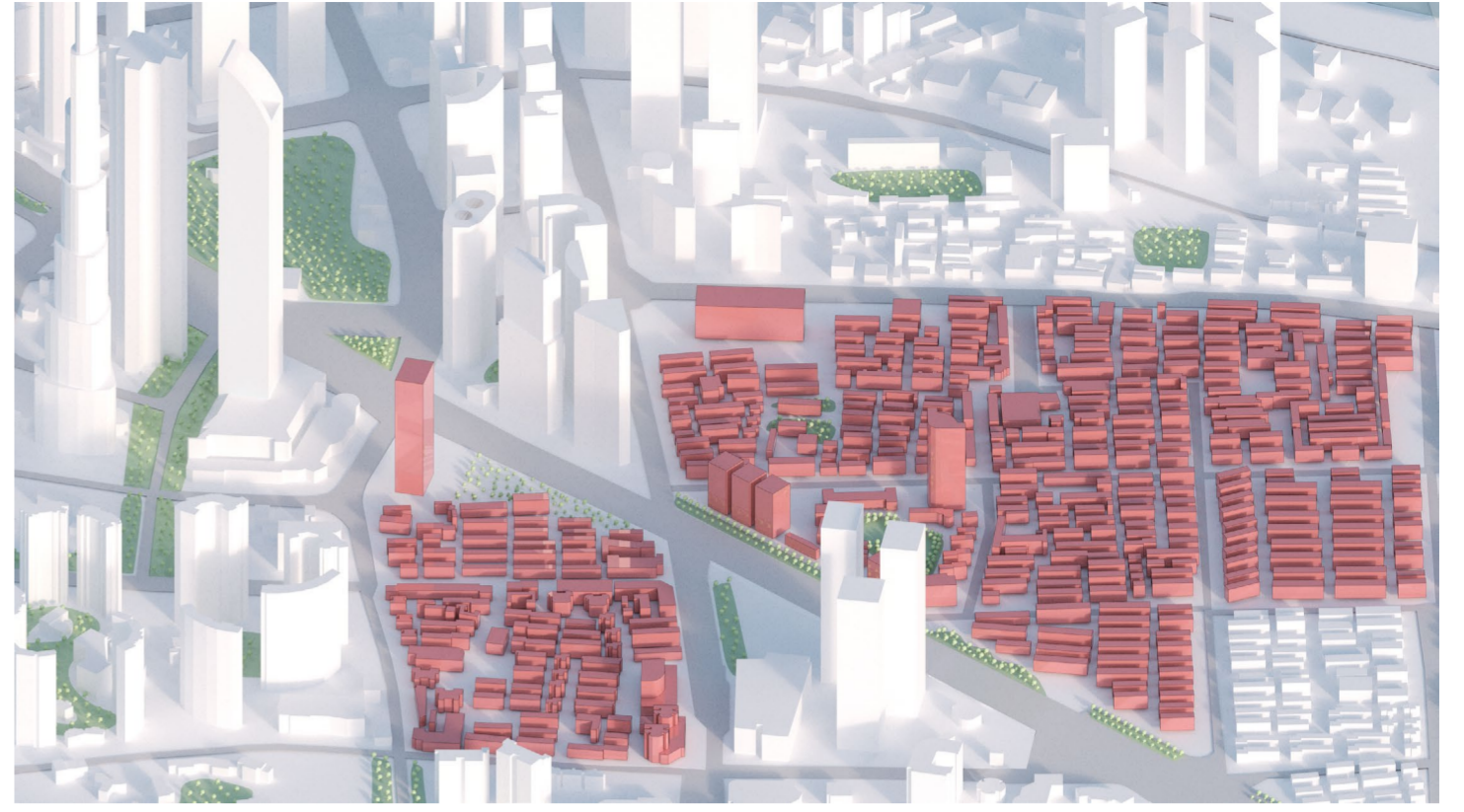
CENTURY AVENUE



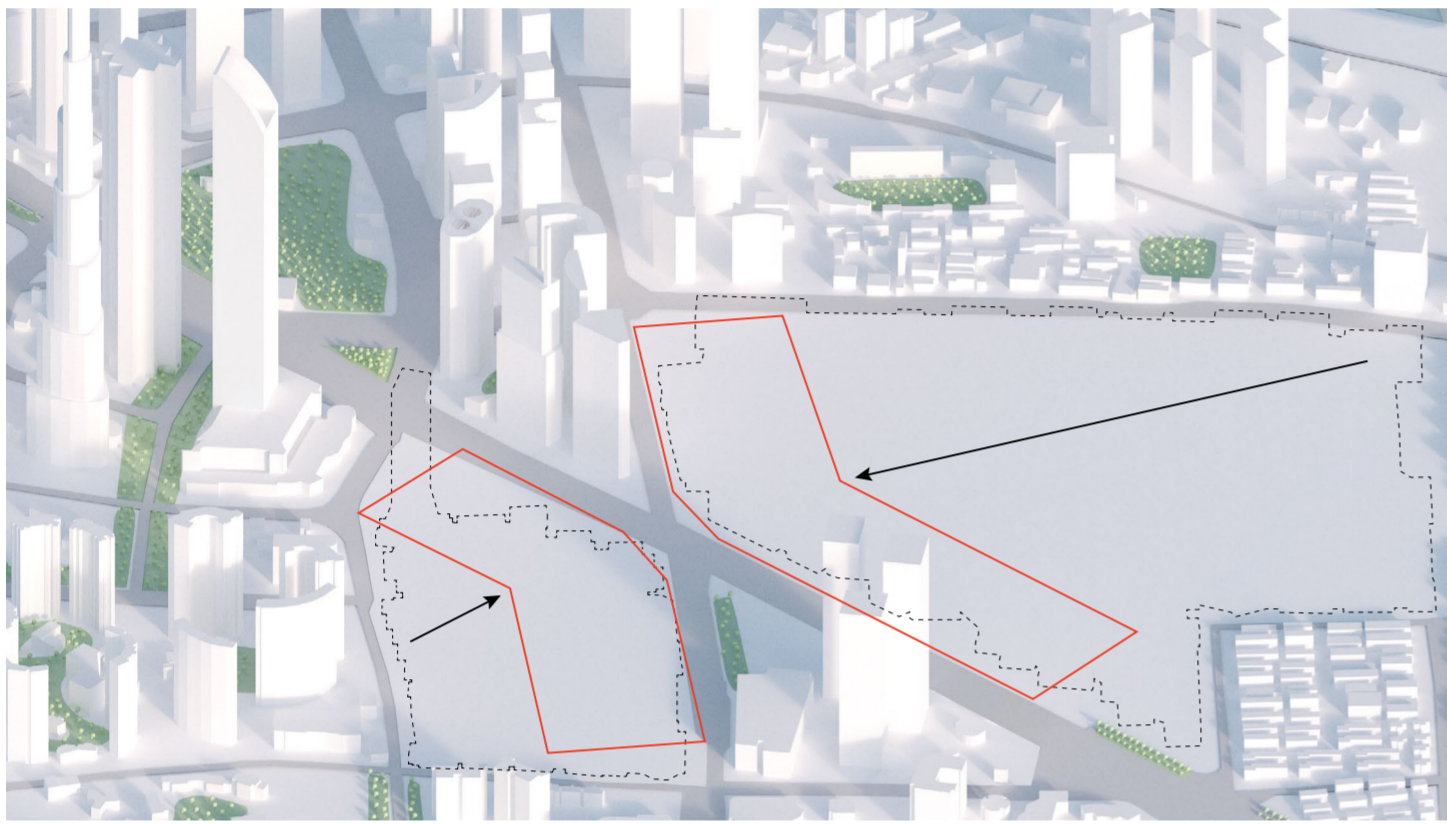
PUBLIC TRANSPORT
NODE



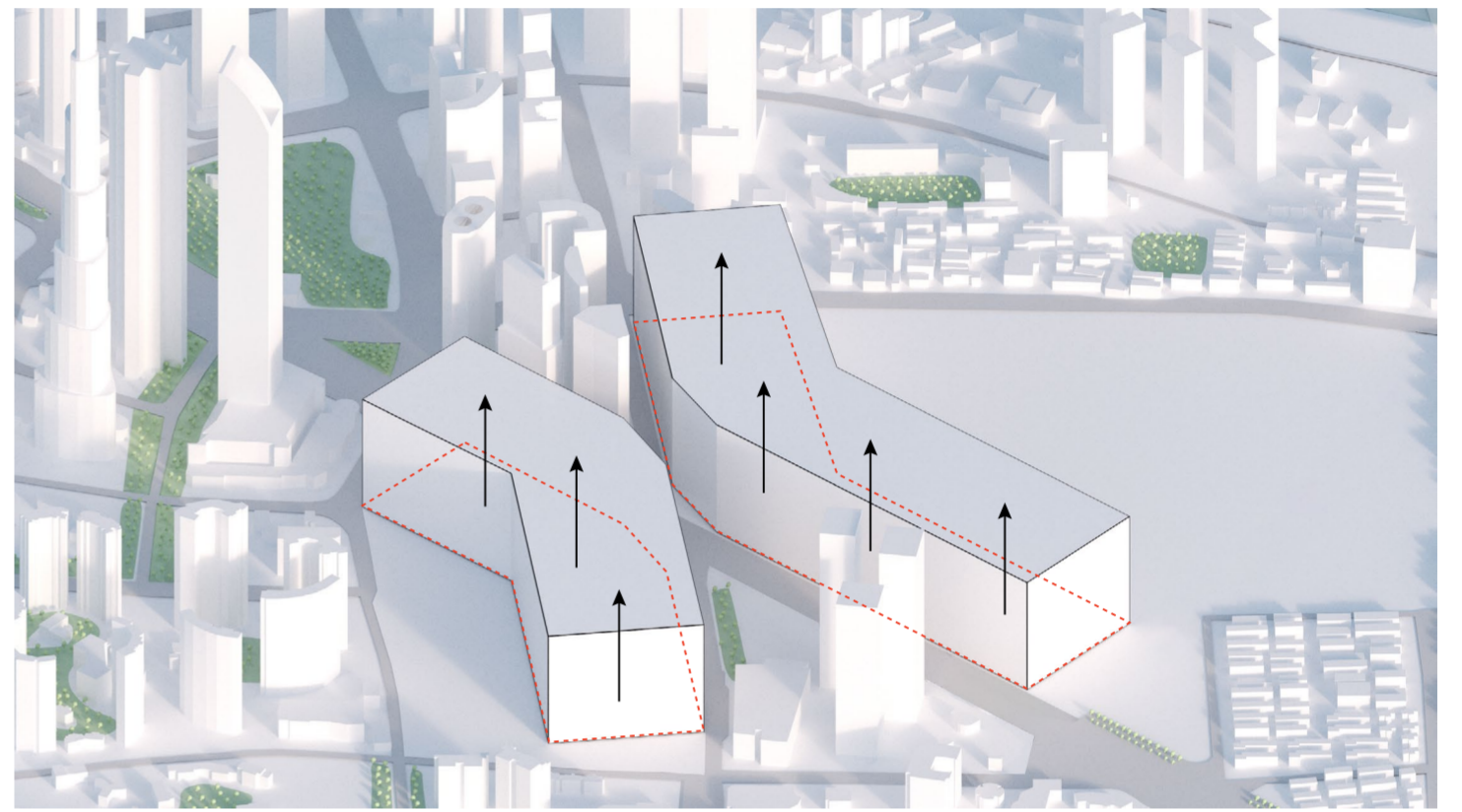
1. CURRENT CONFIGURATION



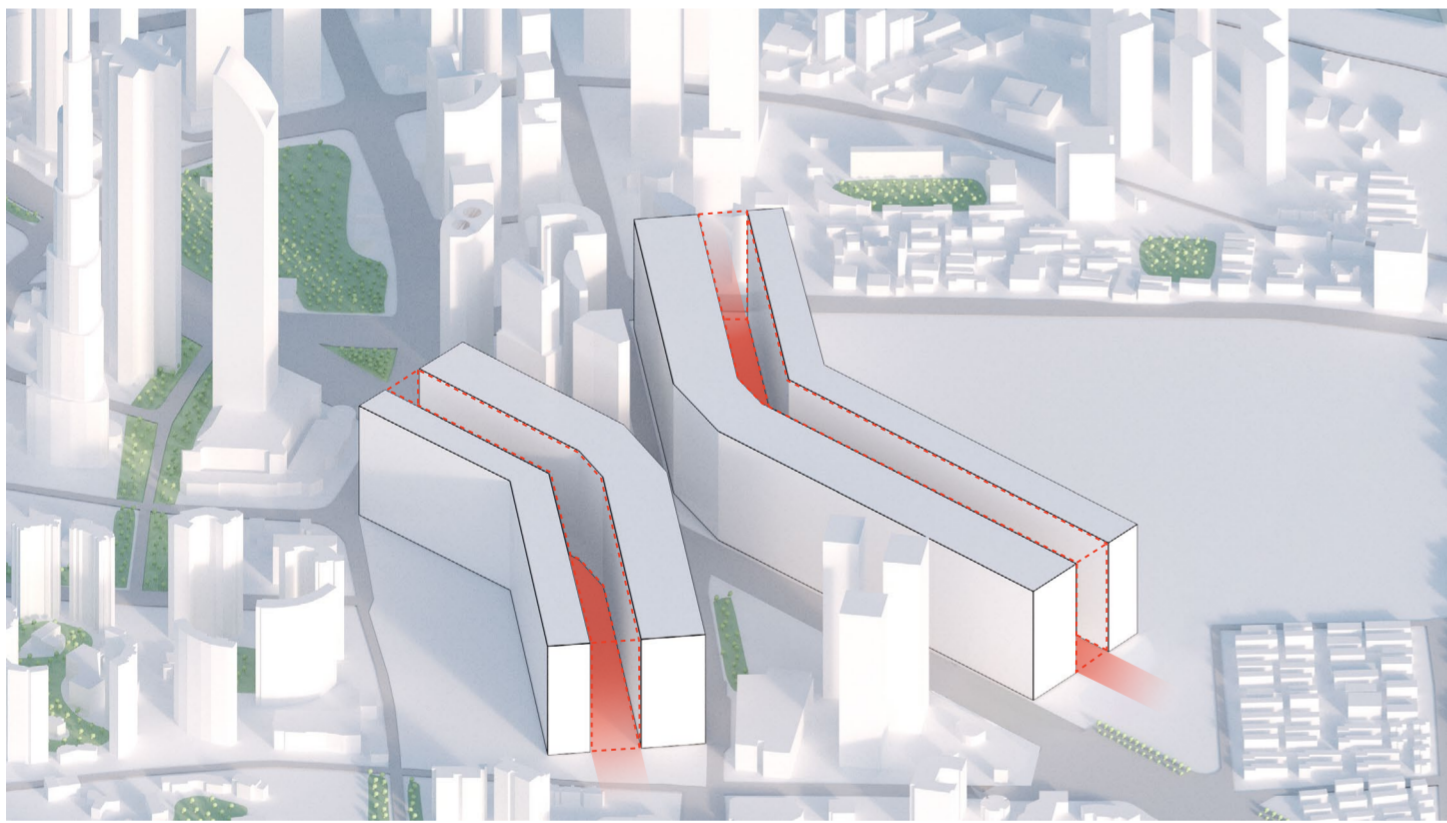
2. INTERVENTION PLOT DEFINITION



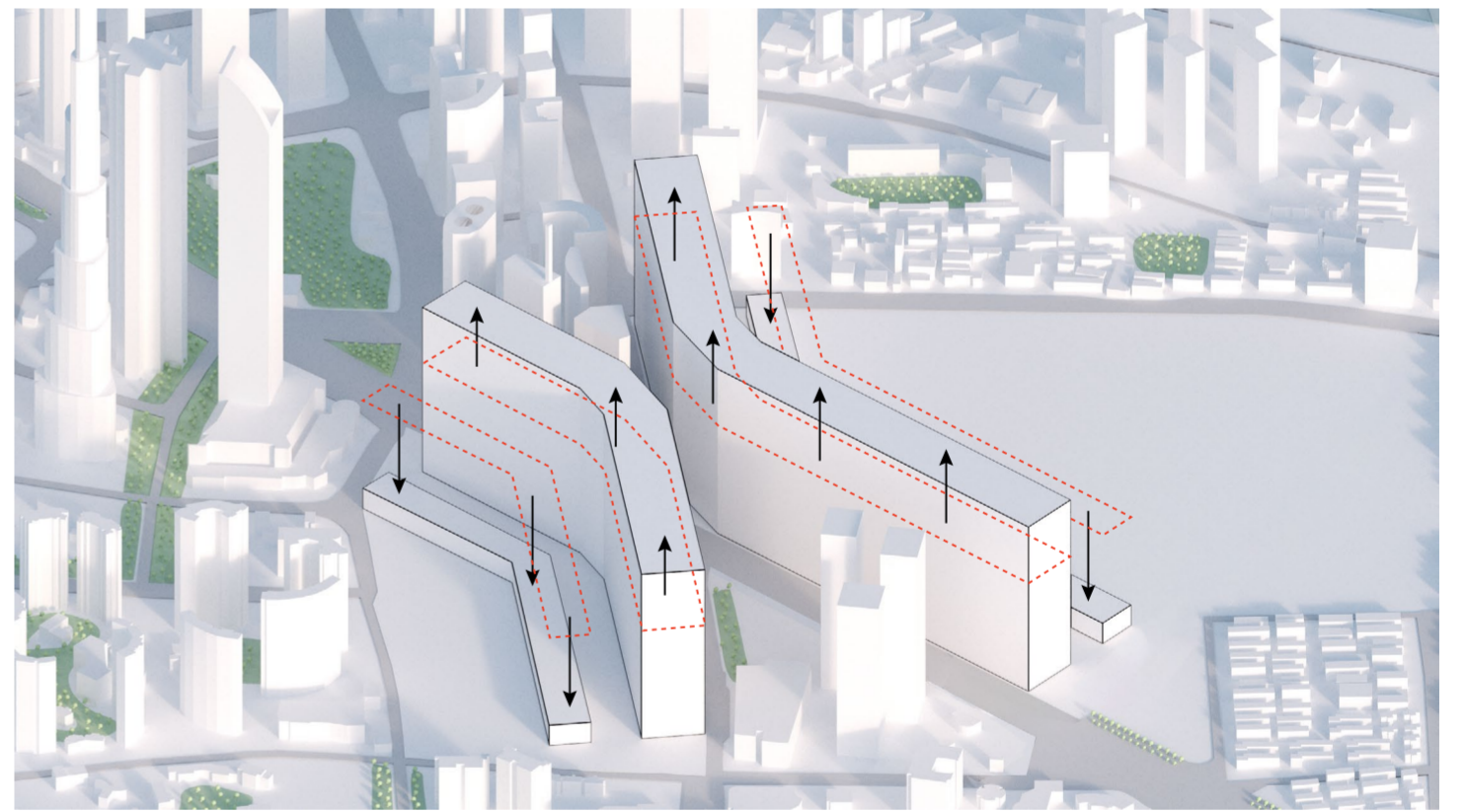
3. MASSING AREA DEFINITION



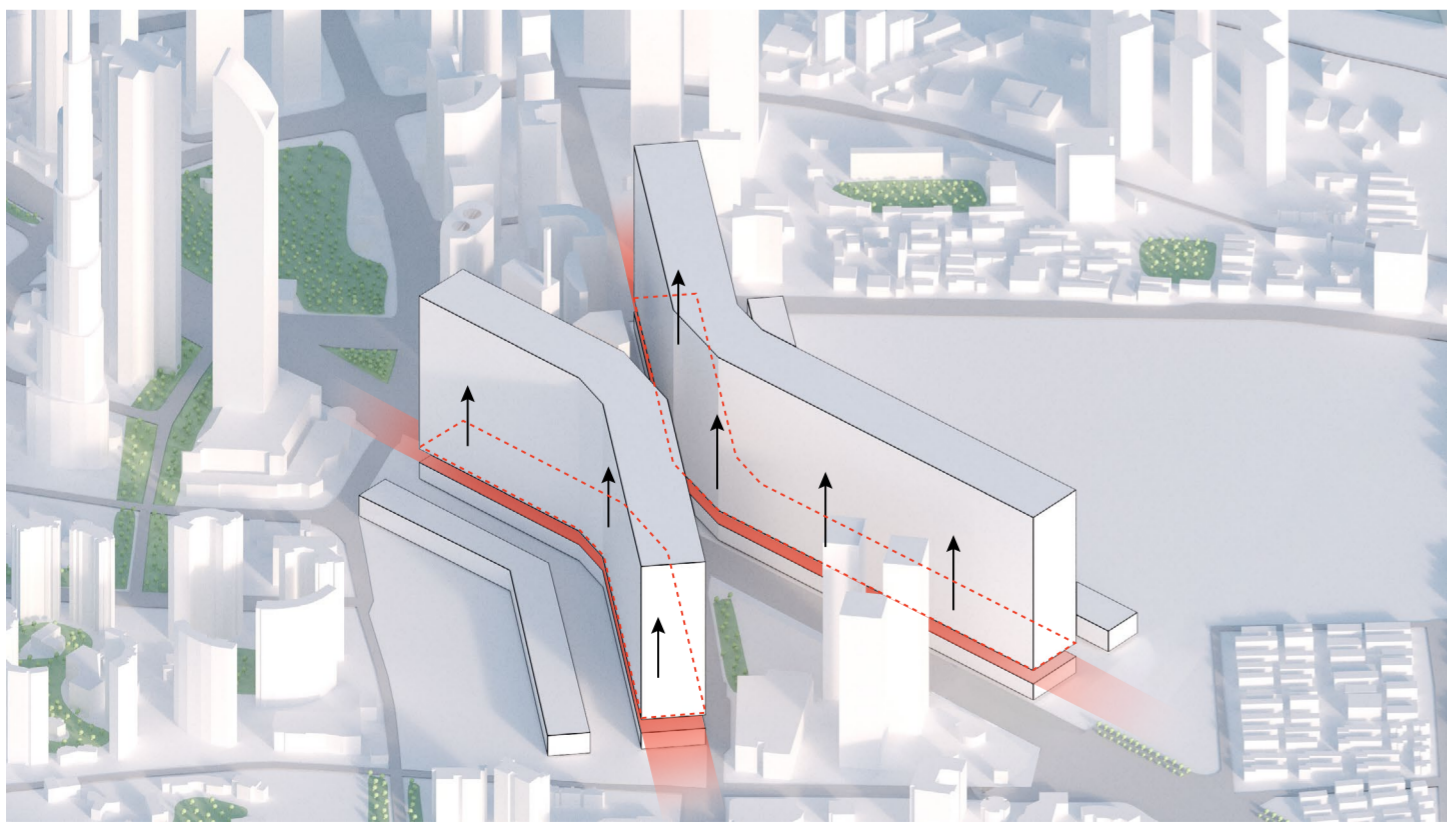
4. VOLUME MASSING FORMATION



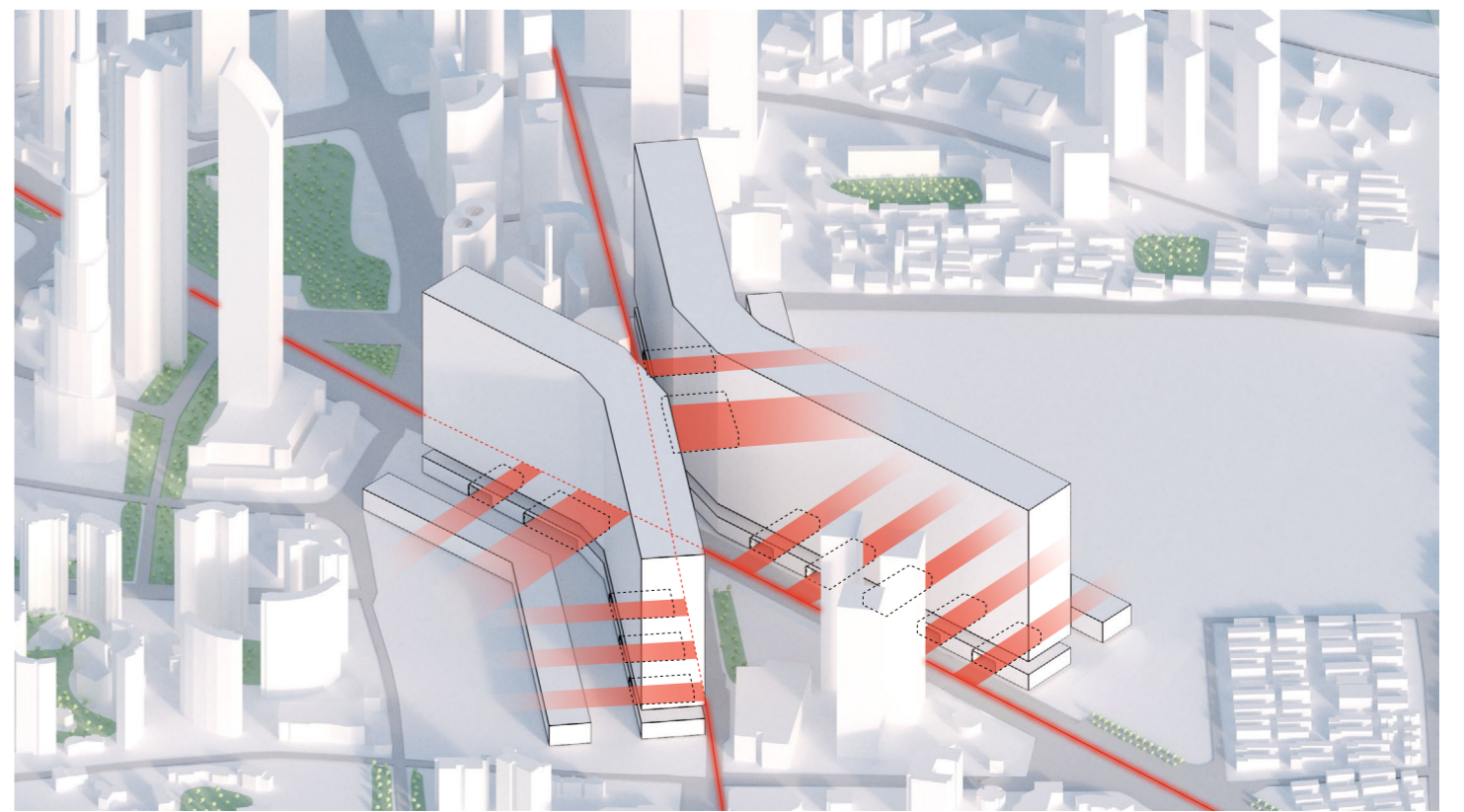
5. INTERNAL PROMENADE CUT



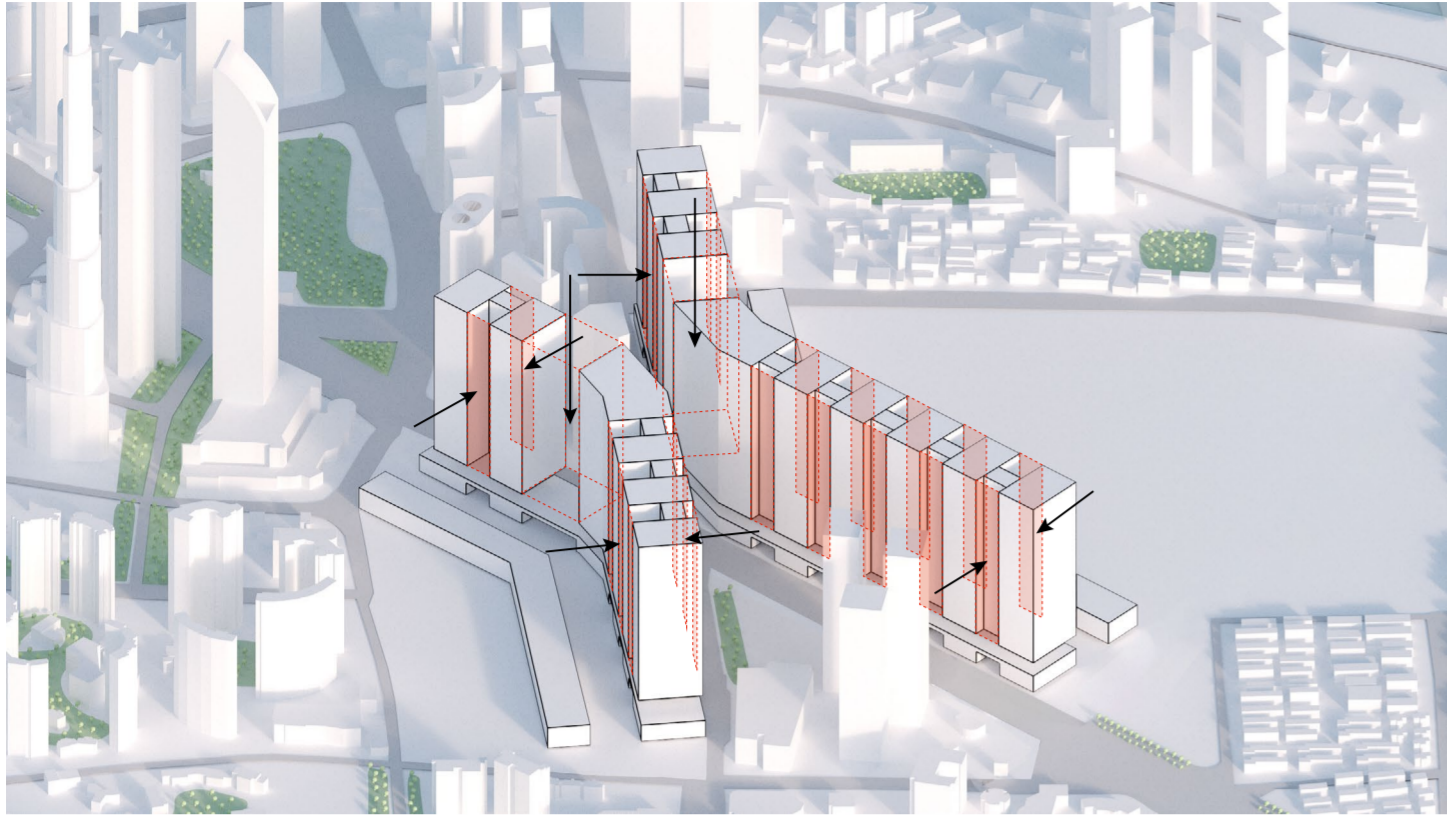
6. HEIGHTS OF FUTURE TYPOLOGIES



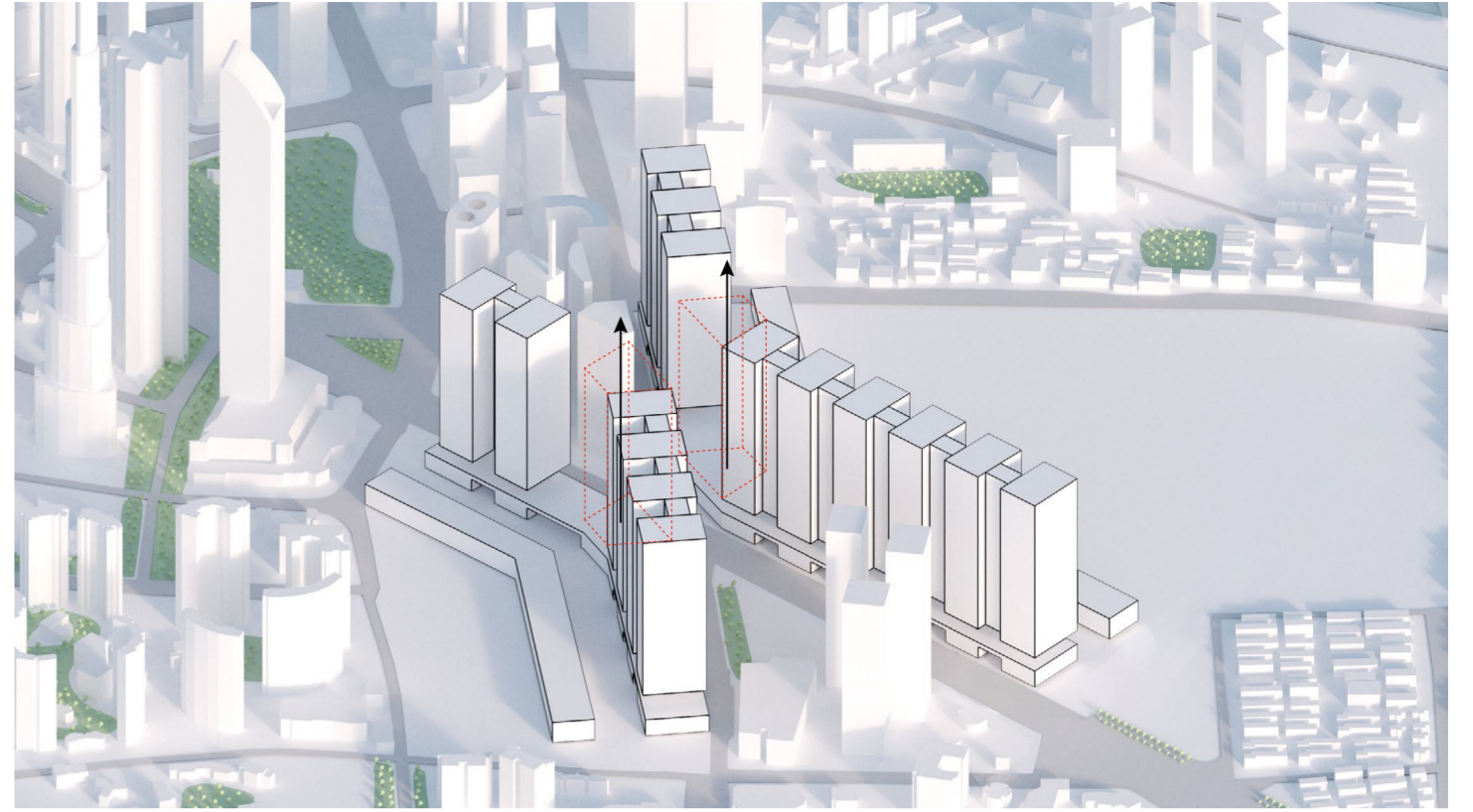
7. FLOATING PROMENADE



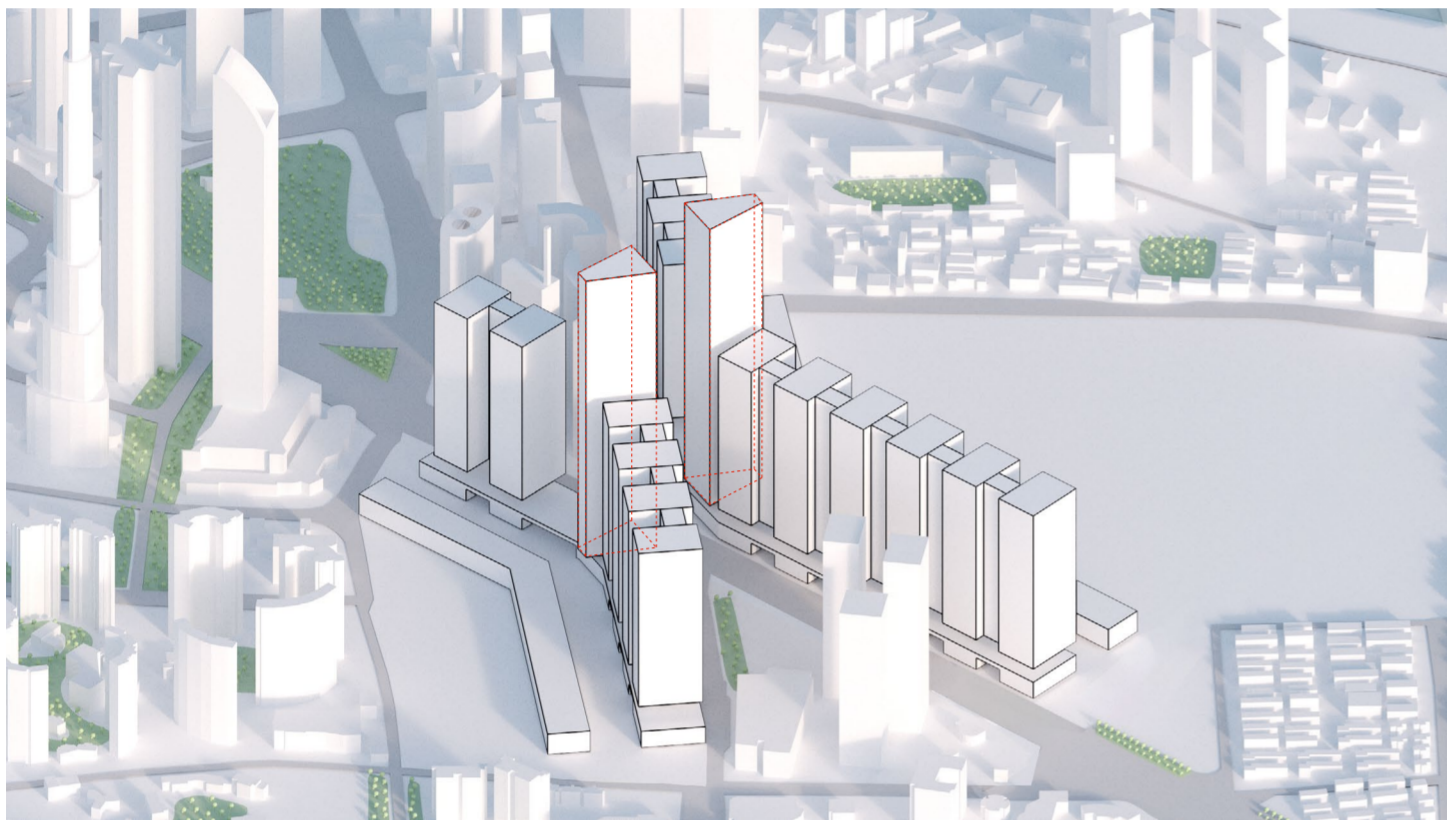
8. CIVIC APERTURES POROSITY DEFINITION



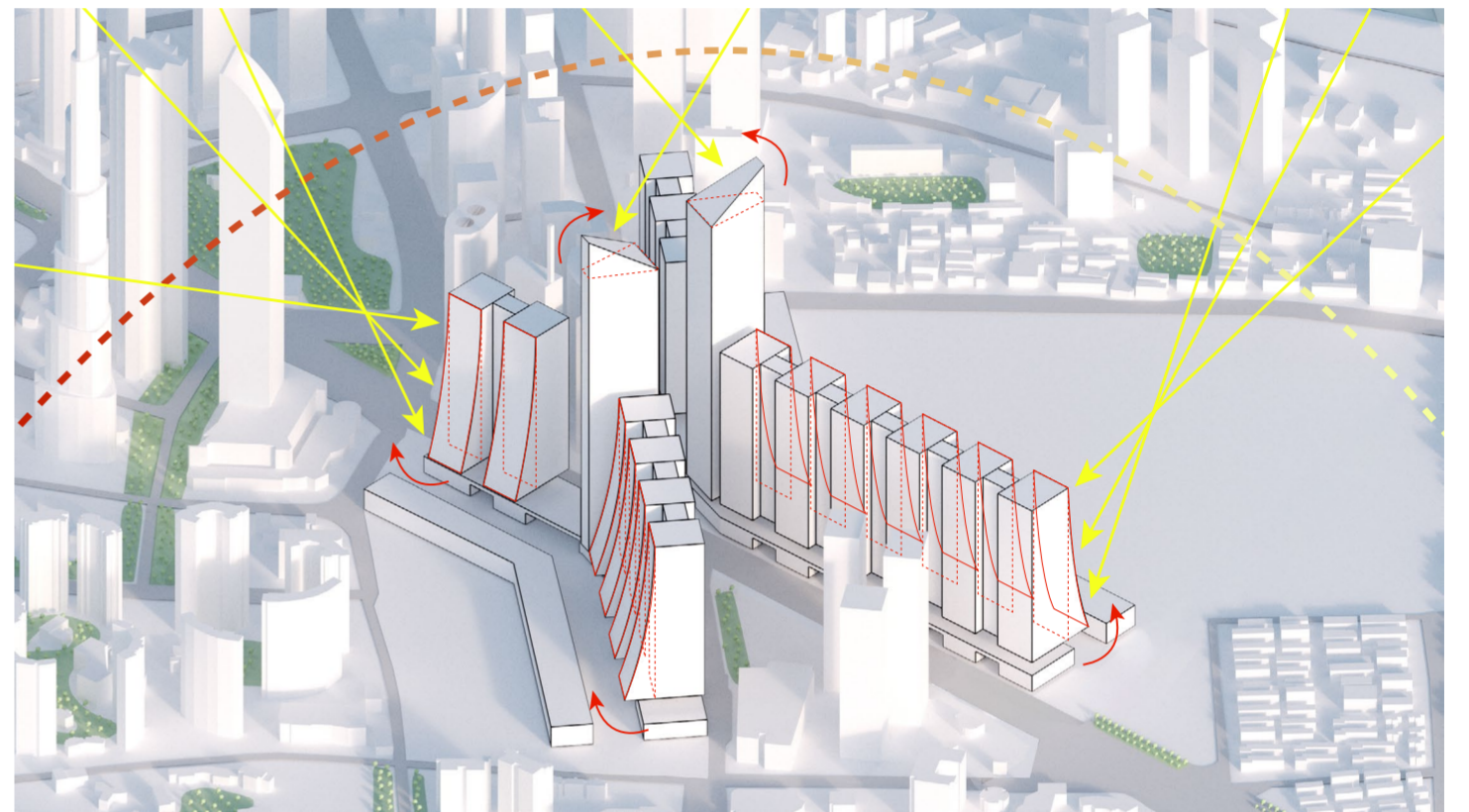
9. HOUSING TOWER AND PUBLIC AMENITIES CARVING



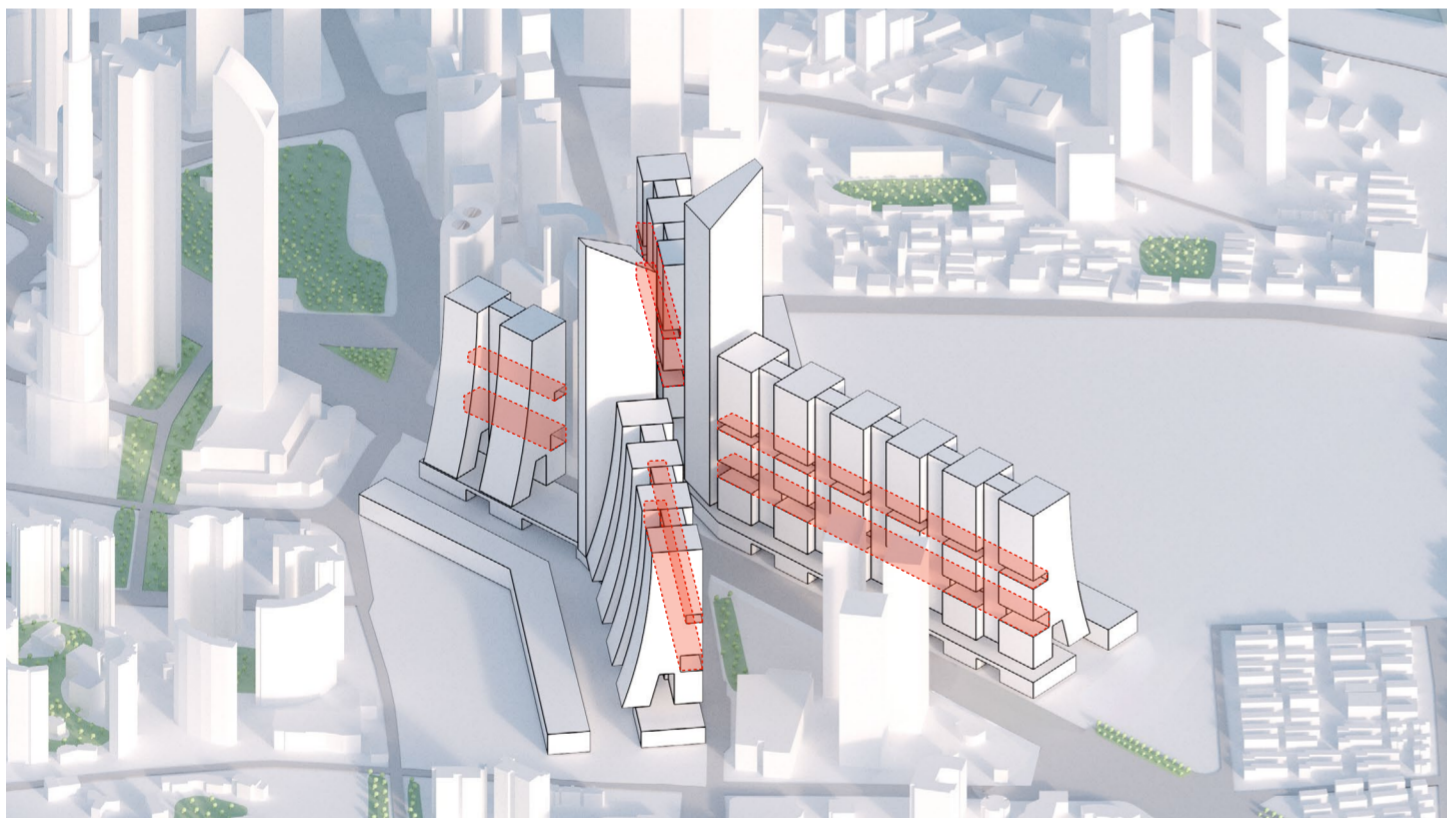
10. OFFICE TOWER MASSING DISTRIBUTION



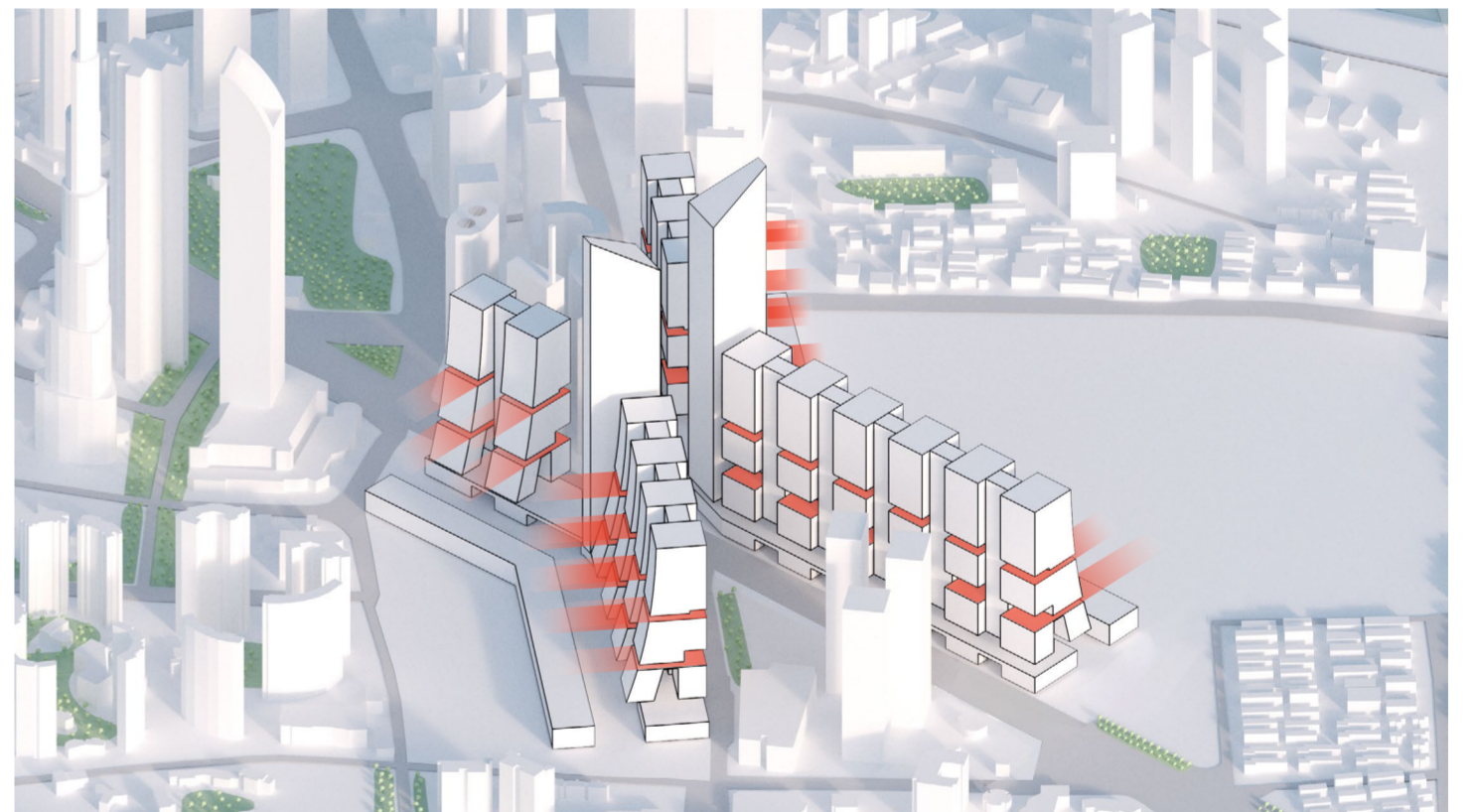
11. OFFICE TOWERS HEIGHT DEFINITION



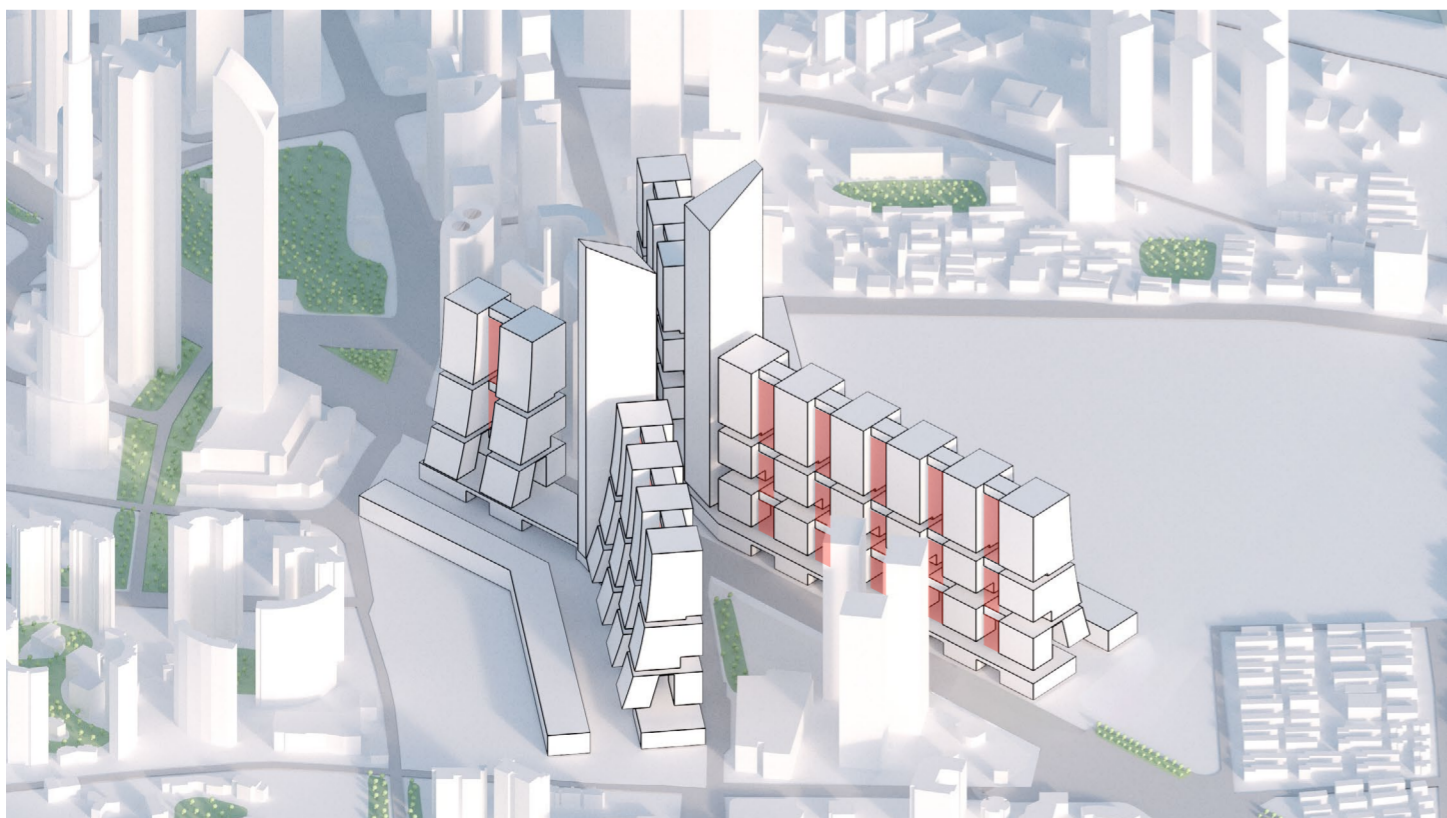
12. RESPONSIVE MASSING TO ENVIRONMENTAL CONDITIONS



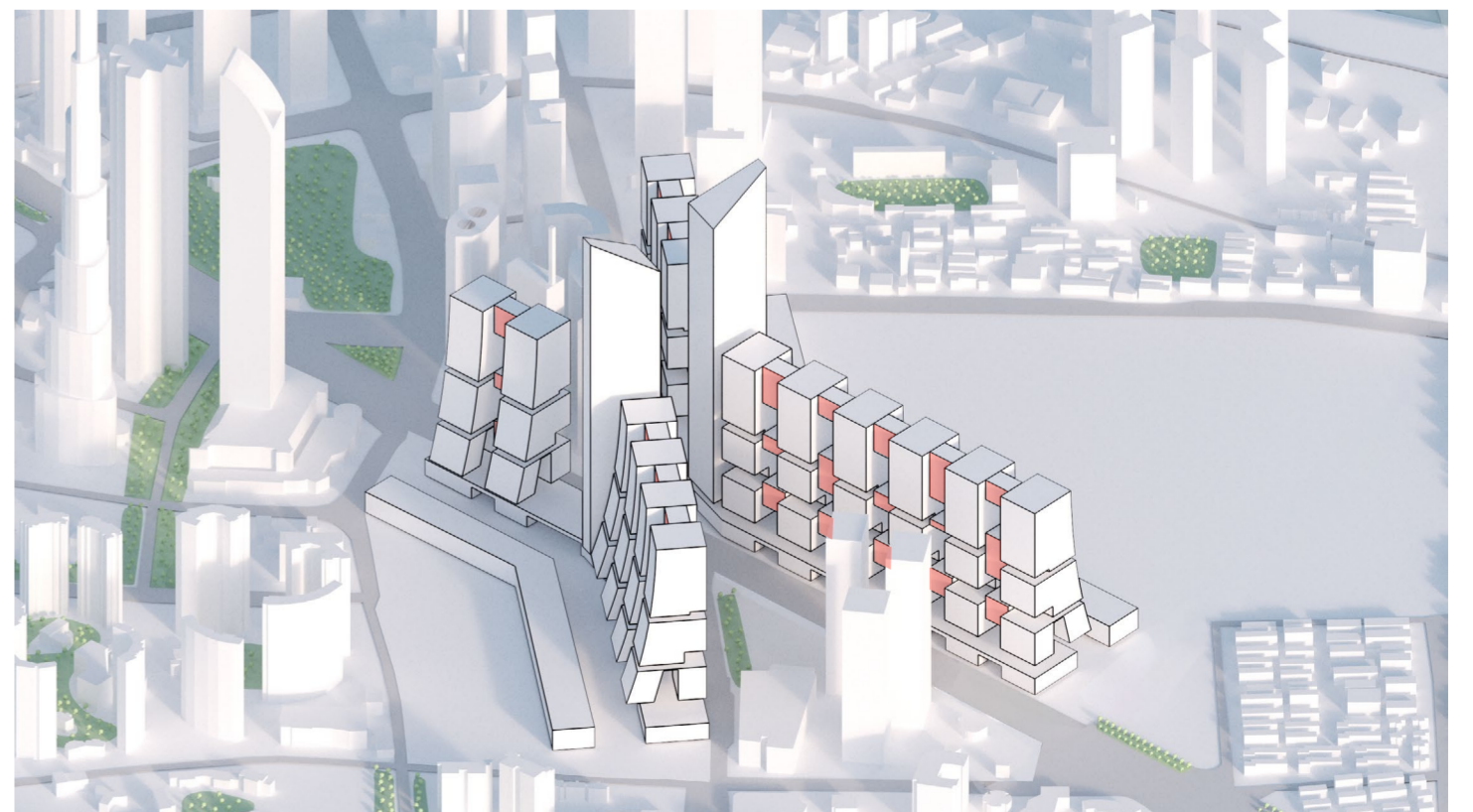
13. ELEVATED CONNECTIONS AND WALKWAYS SUBTRACTION



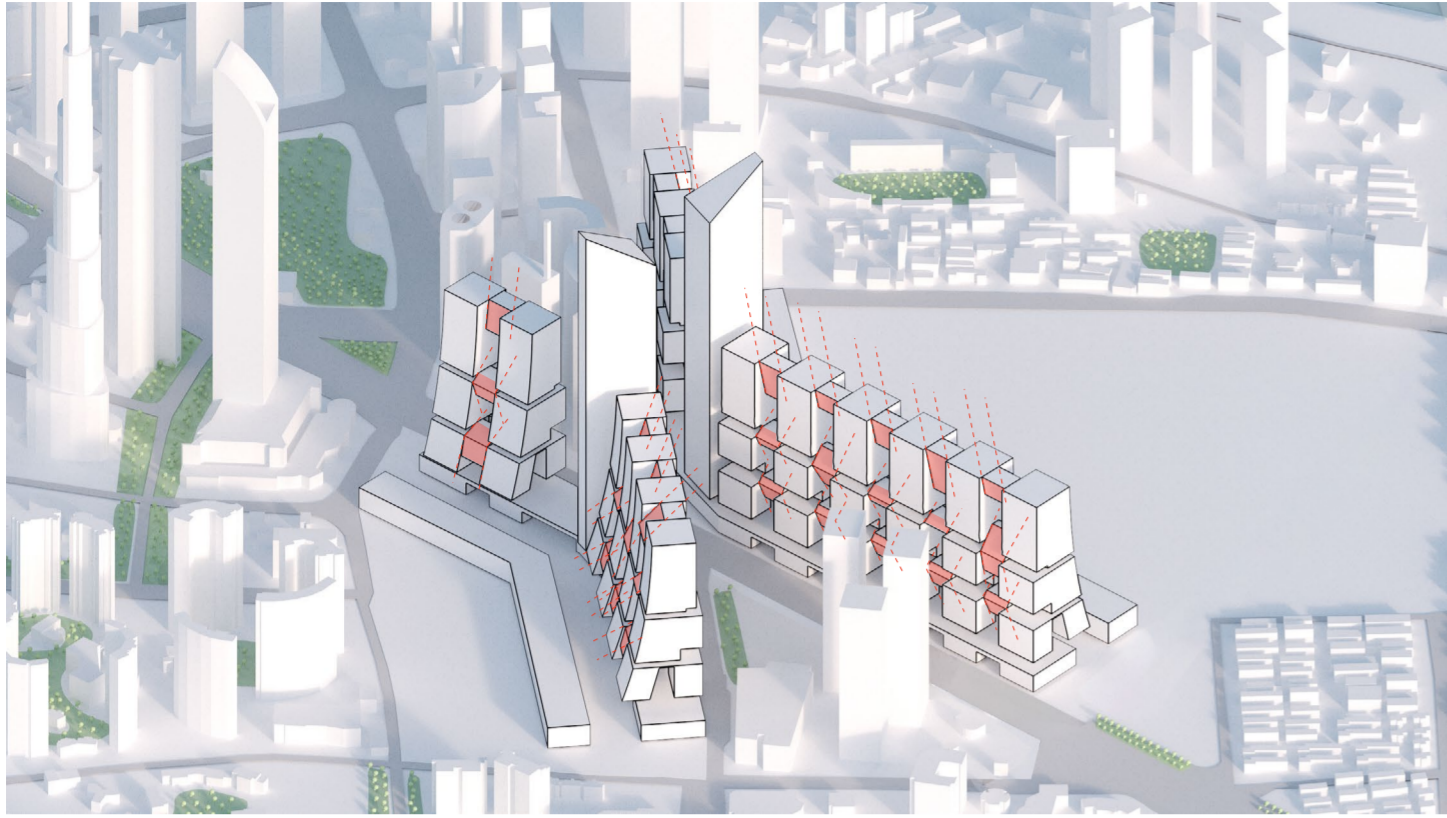
14. TOWER POROSITY AND SIDE-TO-SIDE CONNECTION CUTS



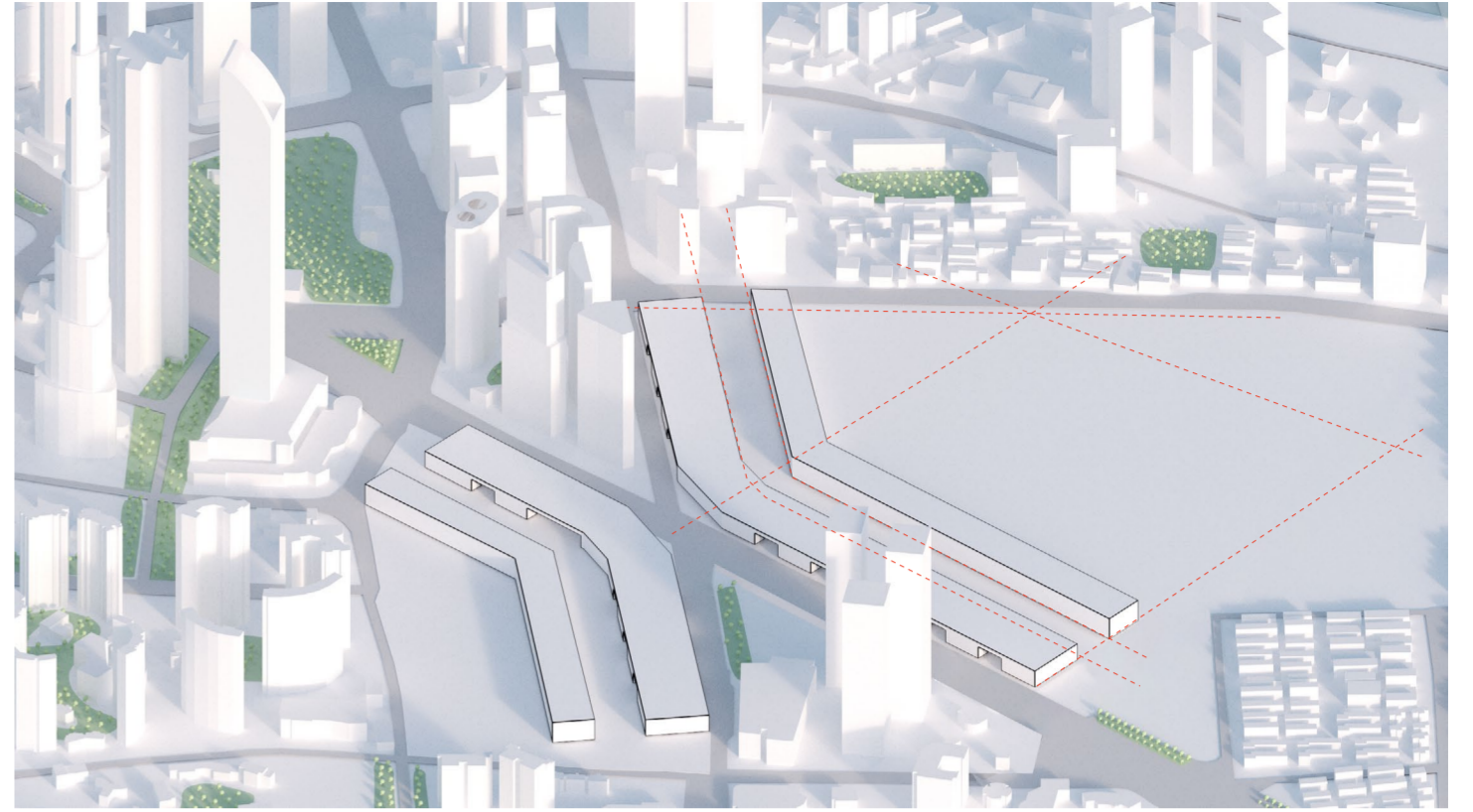
15. FLOATING PUBLIC AND CO-HOUSING AMENITIES DISTRIBUTION



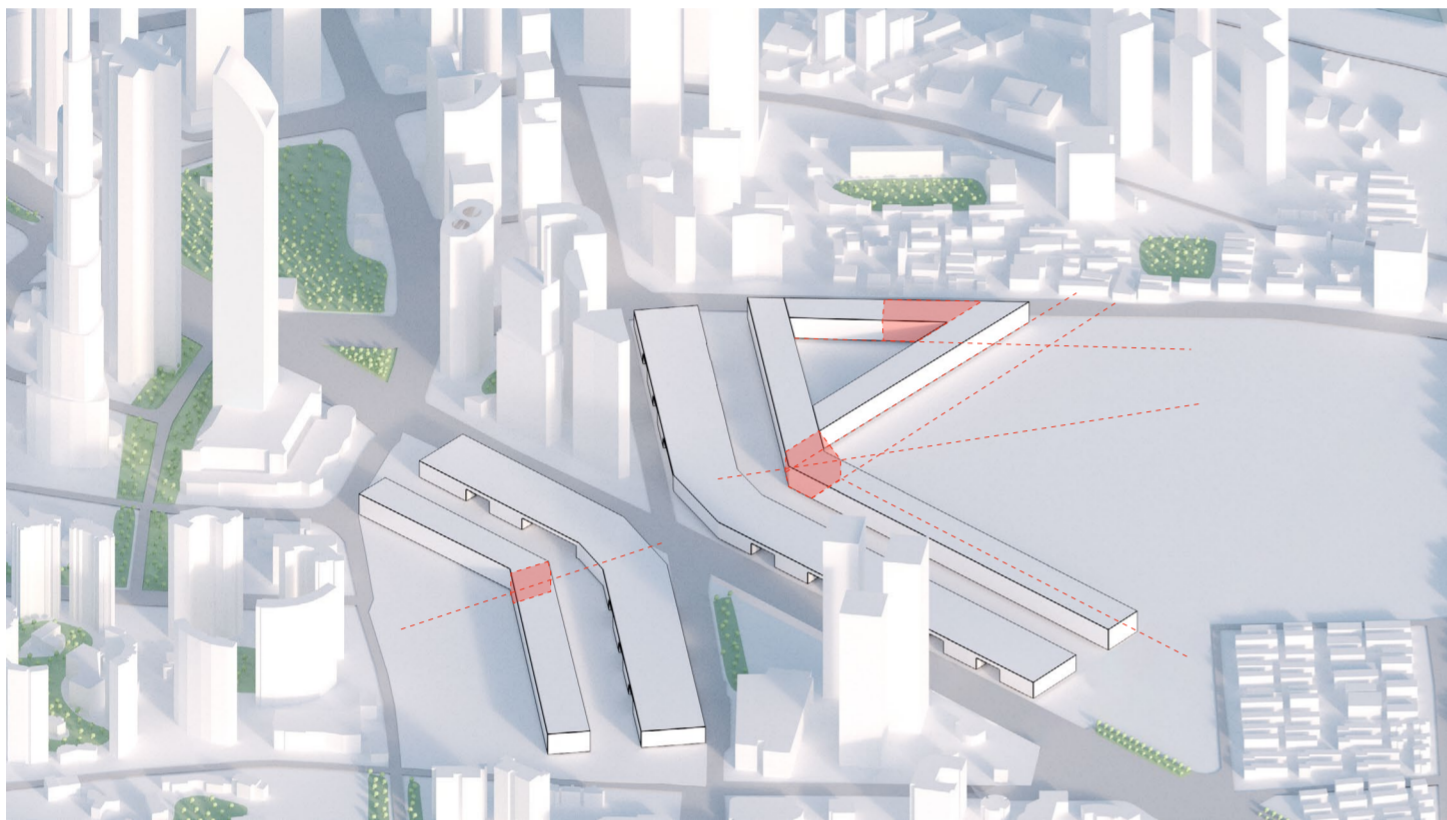
16. FLOATING PUBLIC AND CO-HOUSING AMENITIES RELATIVE HEIGHTS



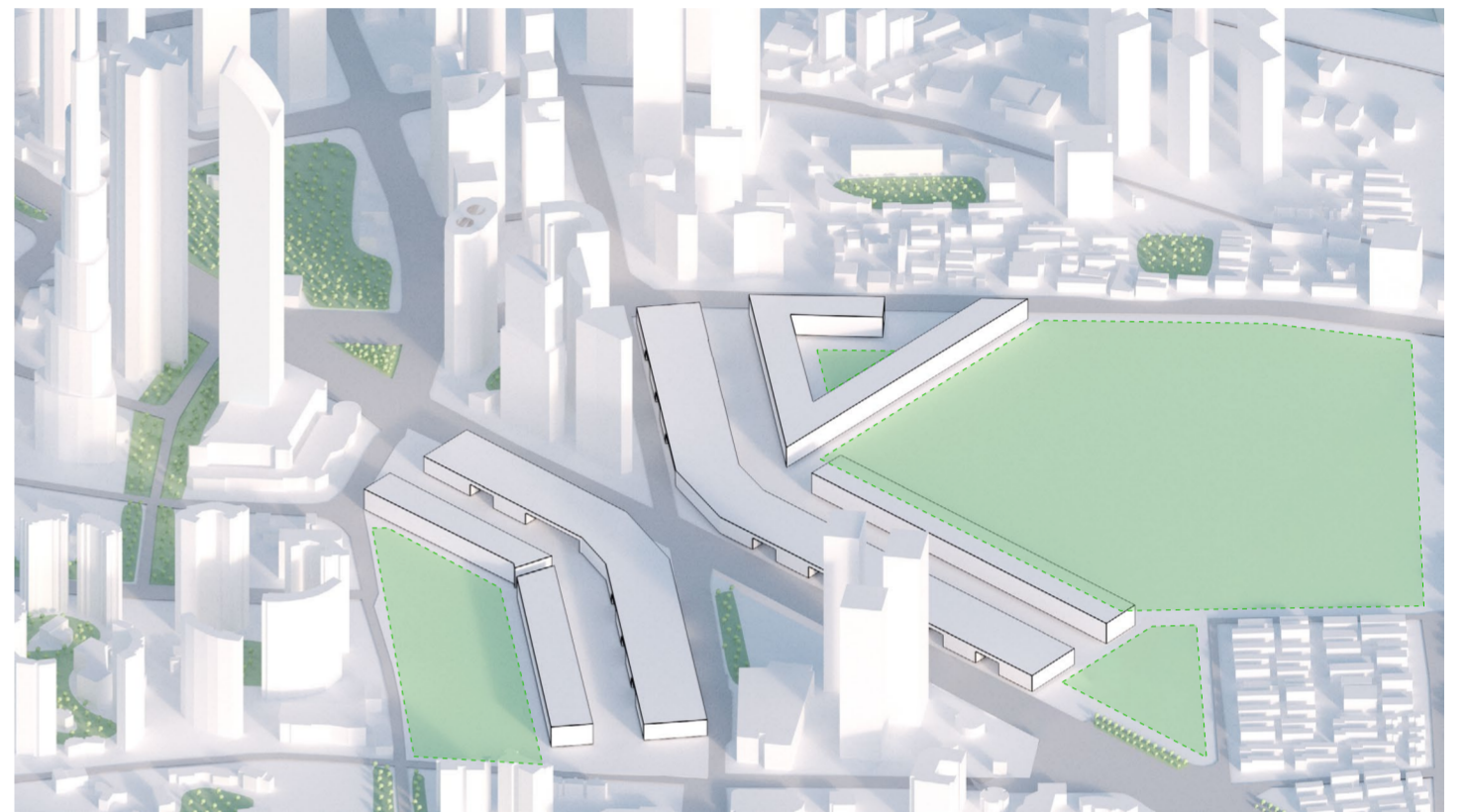
17. PUBLIC AMENITIES INCLINATION FOR RESPONSIVE FACADE



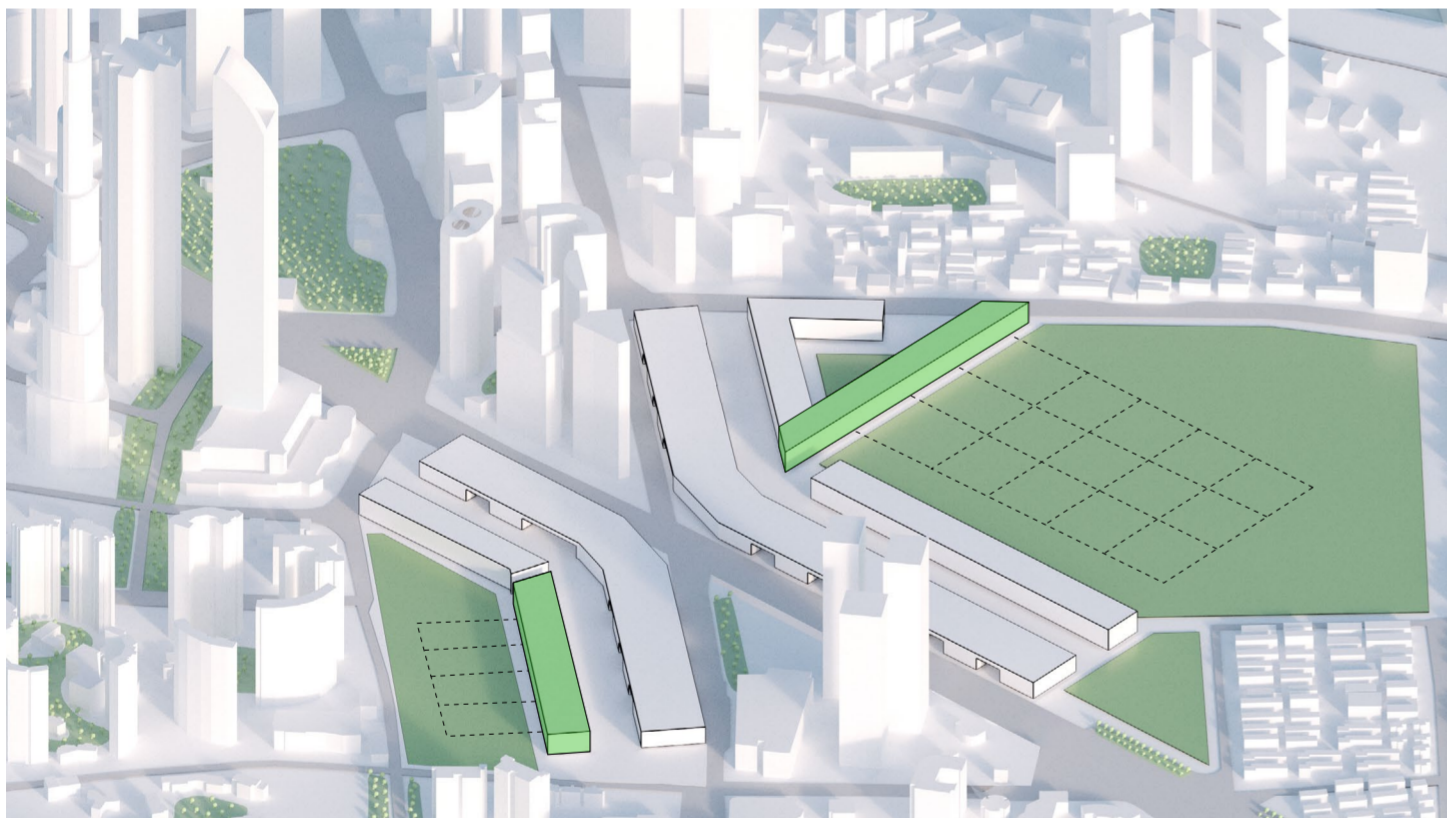
18. PRODUCTIVE PARK AND SUPPORT SPACES PLOT DEFINITION



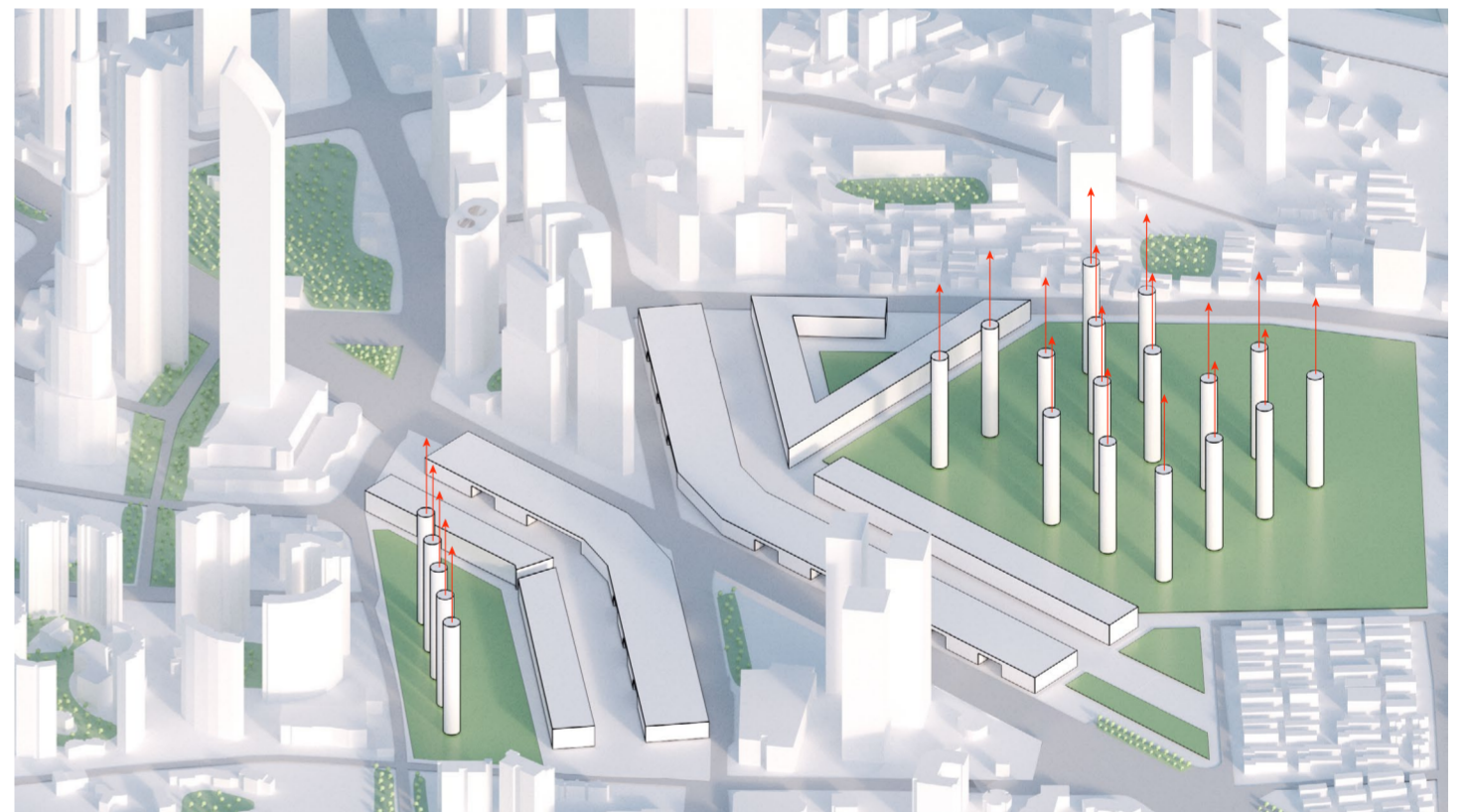
19. APERTURES AND GATES STUDY



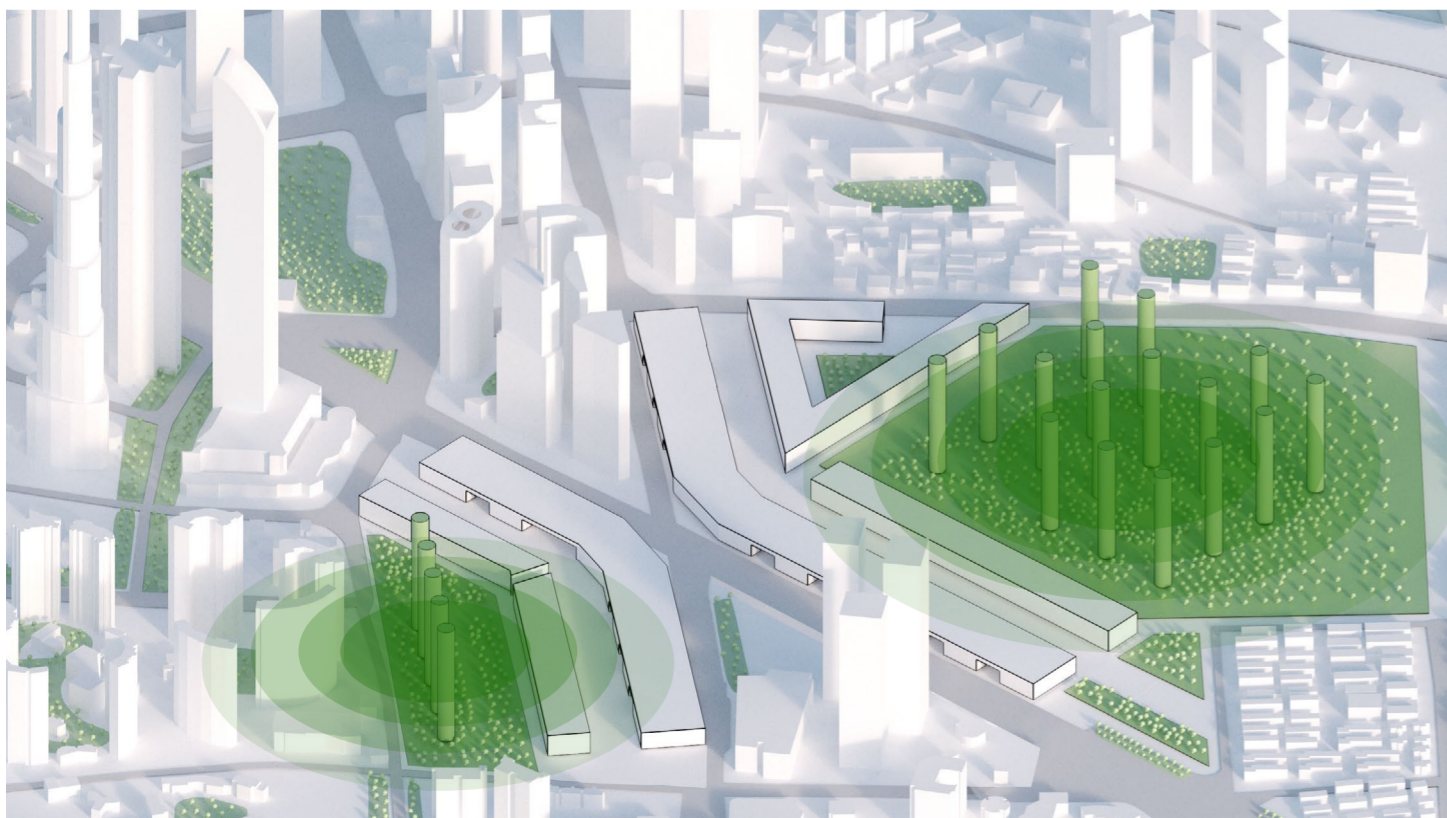
20. PODIUMS AND SUPPORT SPACES, SCHOOLS AND HOSPITAL MASSINGS



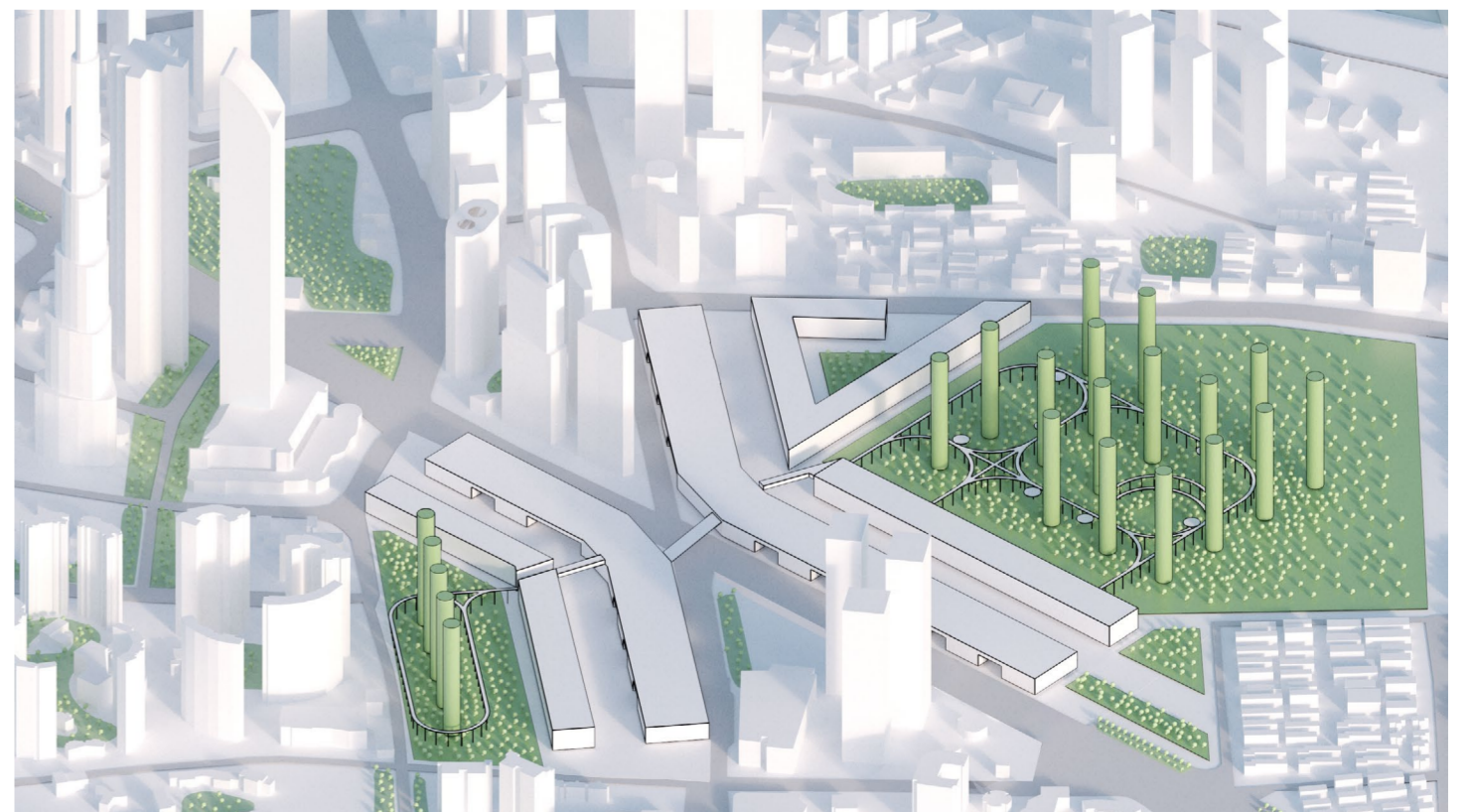
21. PRODUCTIVE PARK AND TOWERS GRID FORMATION



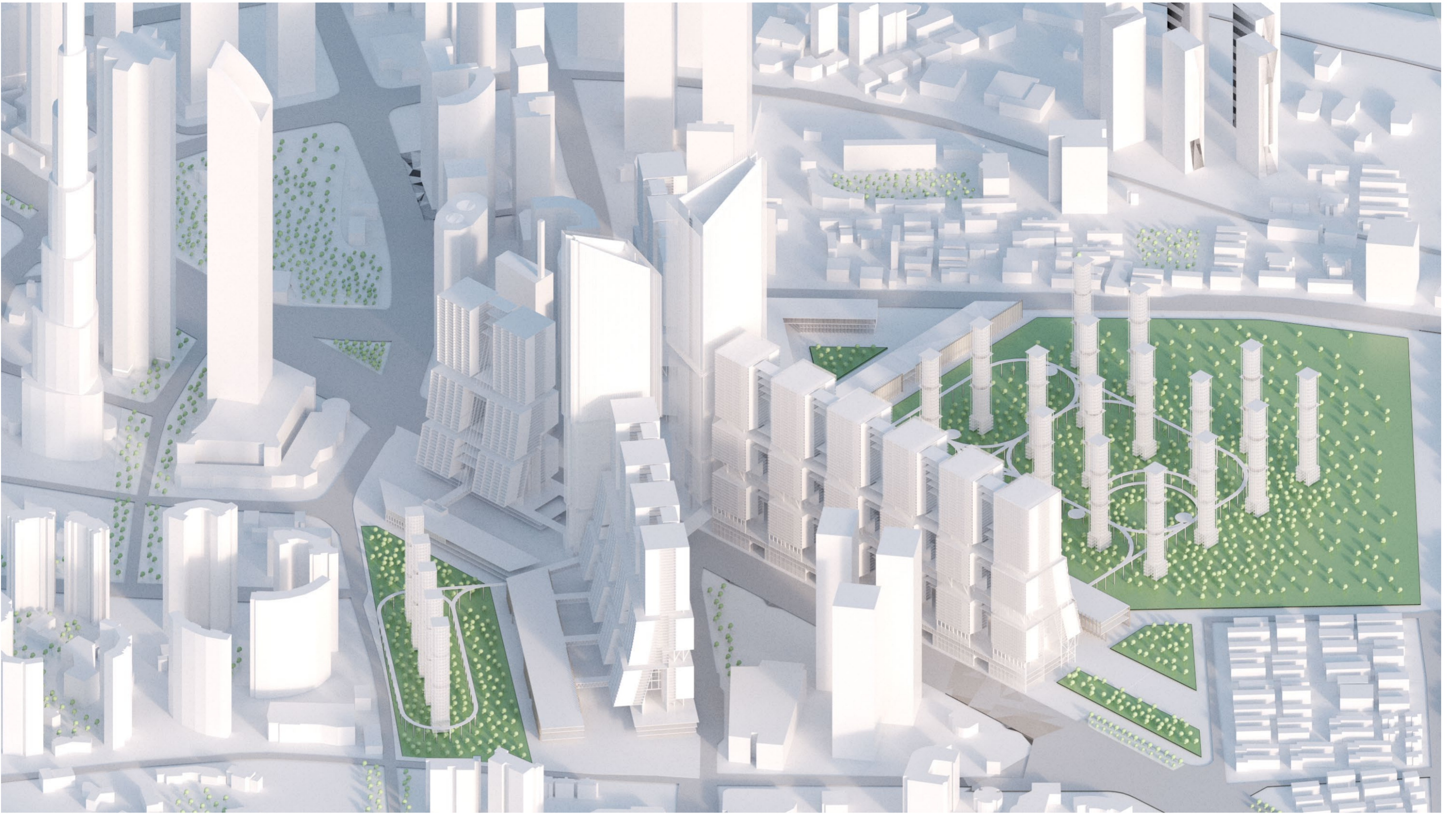
22. PRODUCTIVE TOWERS EXTRUSION



23. PRODUCTIVE PARK ACTIVATED DUE TO TOWERS SYNERGY



24. PRODUCTIVE PARK FLOATING WALKWAY INTRODUCTION

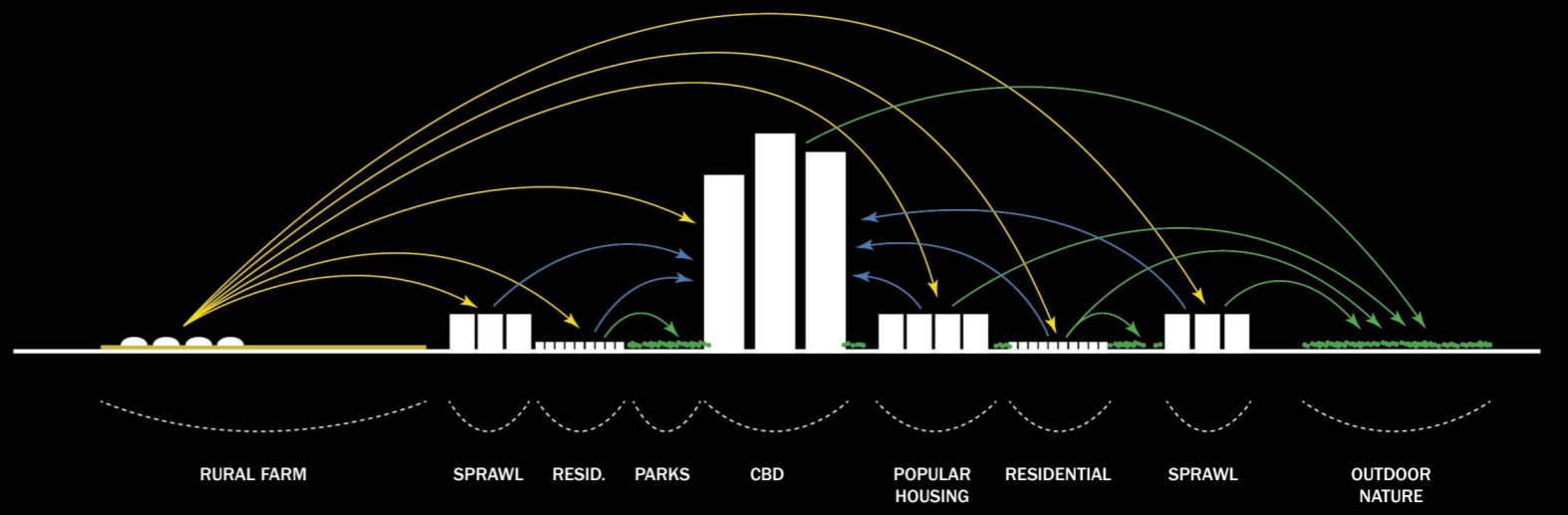


PROJECT VOLUMES AXONOMETRY - SE/NO

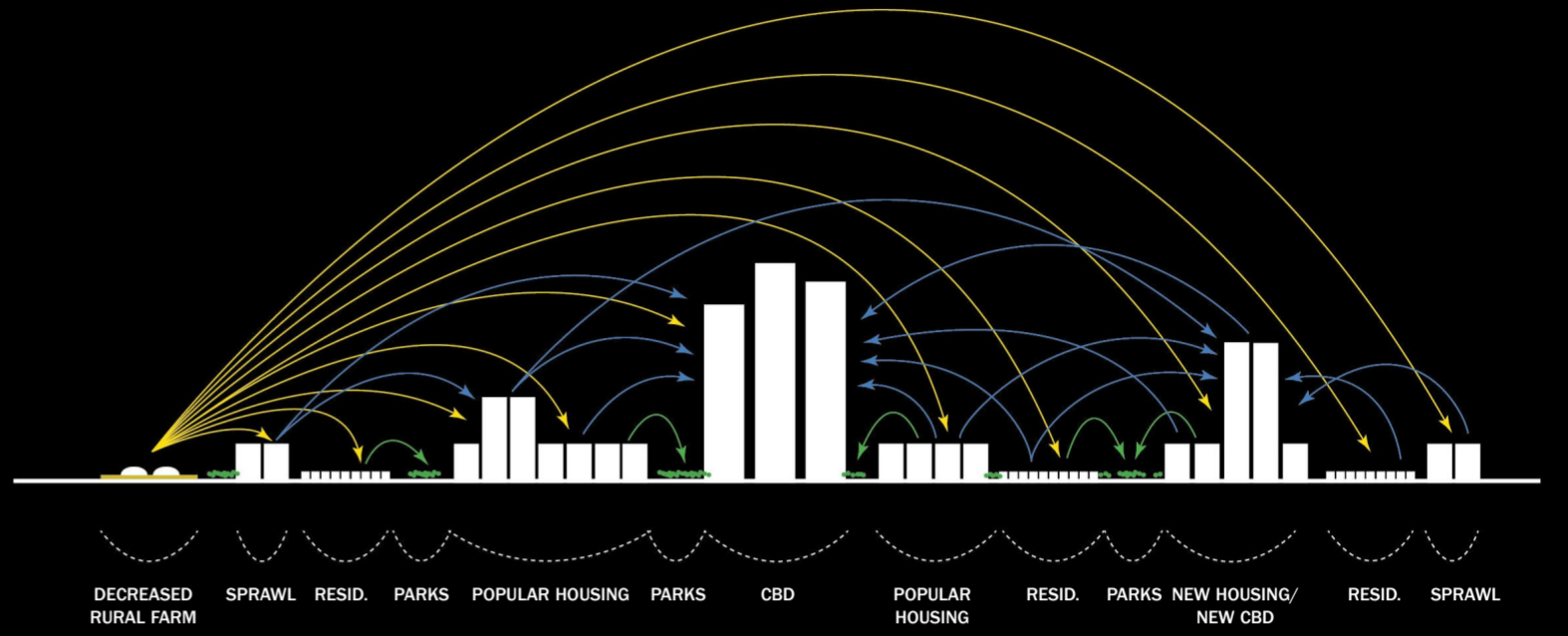


PROJECT VOLUMES AXONOMETRY - NE/SO

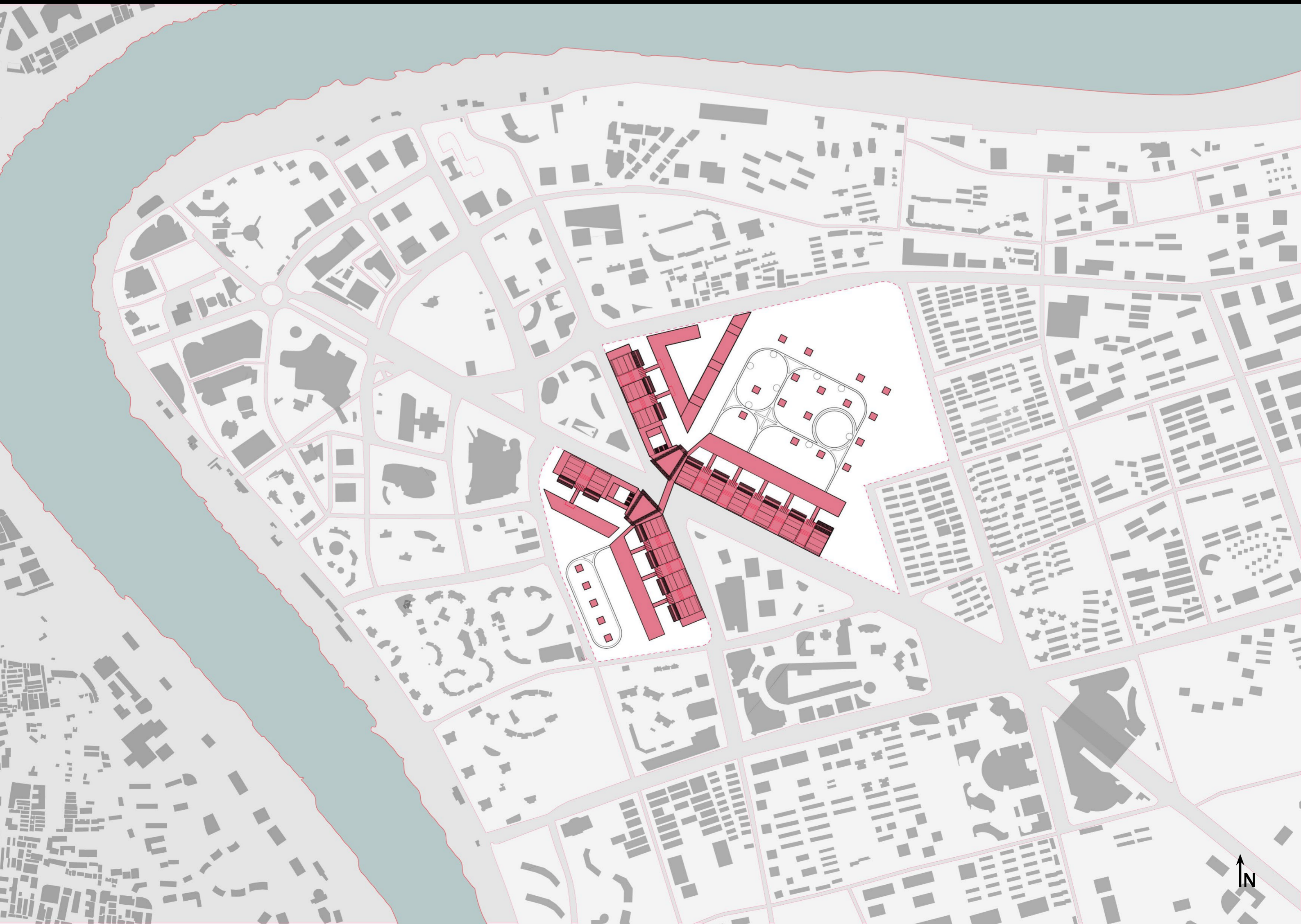
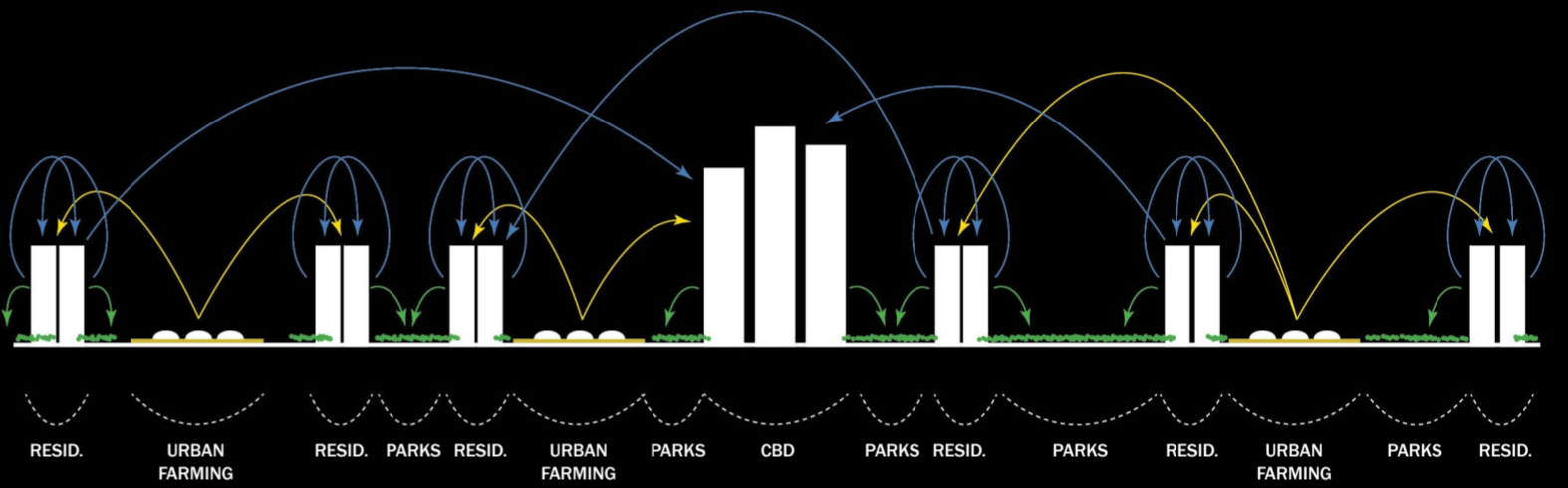
CURRENT CITY MODEL



CURRENT EXPANSION MODEL



PROPOSED MODEL VISION



DOUBLE SKIN FACADE

OFFICES

HOUSING

CORES

FLOATING PROMENADE

PUBLIC AMENITIES AND STRUCTURE

PUBLIC AND RETAIL PODIUMS

FARMING PROCESS SUPPORT SPACES
DISTRIBUTION SPACE, SCHOOLS

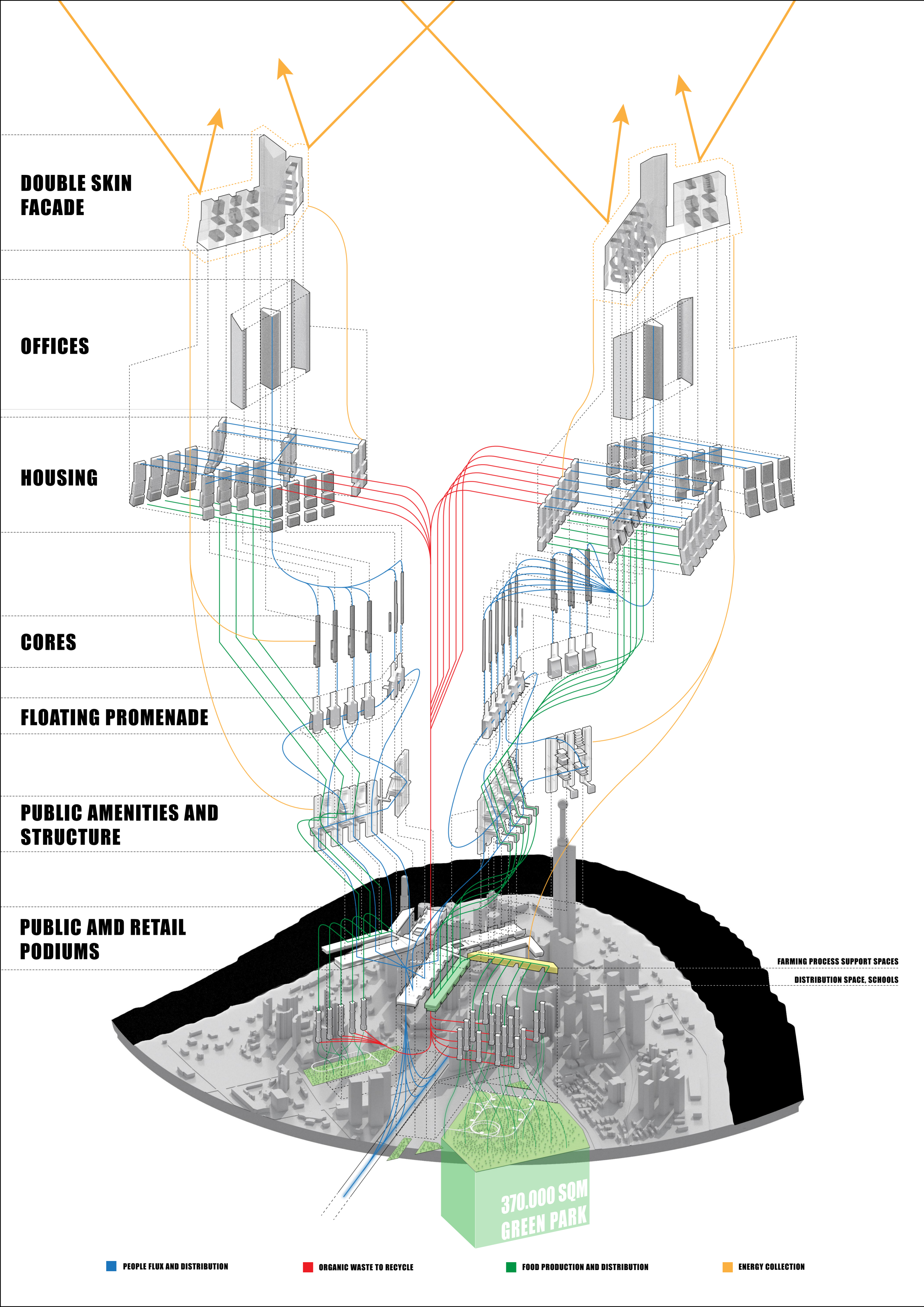
PEOPLE FLUX AND DISTRIBUTION

ORGANIC WASTE TO RECYCLE

FOOD PRODUCTION AND DISTRIBUTION

ENERGY COLLECTION

370.000 SQM GREEN PARK



FUTURE VISIONS - CHRONICLES FROM SHANGHAI 2050



GENERAL SECTION

FUTURE VISIONS - CHRONICLES FROM SHANGHAI 2050



CENTURY AVENUE - CIVIC ENTRANCE

FUTURE VISIONS - CHRONICLES FROM SHANGHAI 2050



CONNECTION BRIDGE

FUTURE VISIONS - CHRONICLES FROM SHANGHAI 2050



INTERNAL PROMENADE

FUTURE VISIONS - CHRONICLES FROM SHANGHAI 2050



PRODUCTIVE PARK FUTURE VISIONS - CHRONICLES FROM SHANGHAI 2050



PRODUCTIVE PARK FLOATING WALKWAY