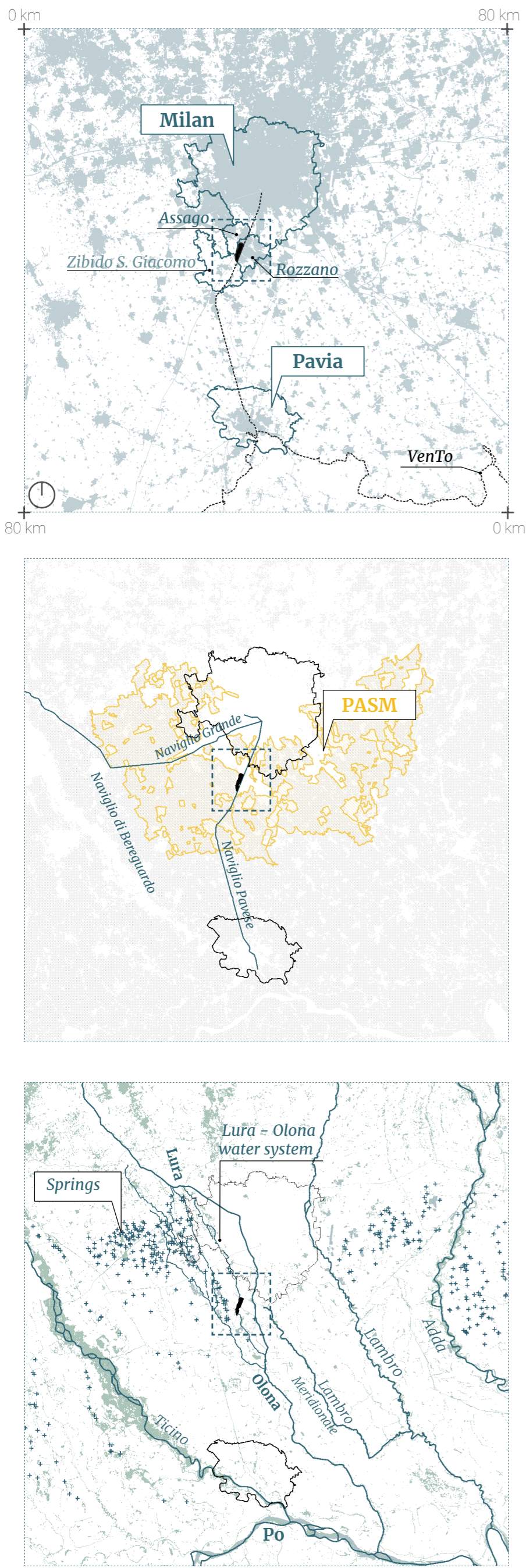


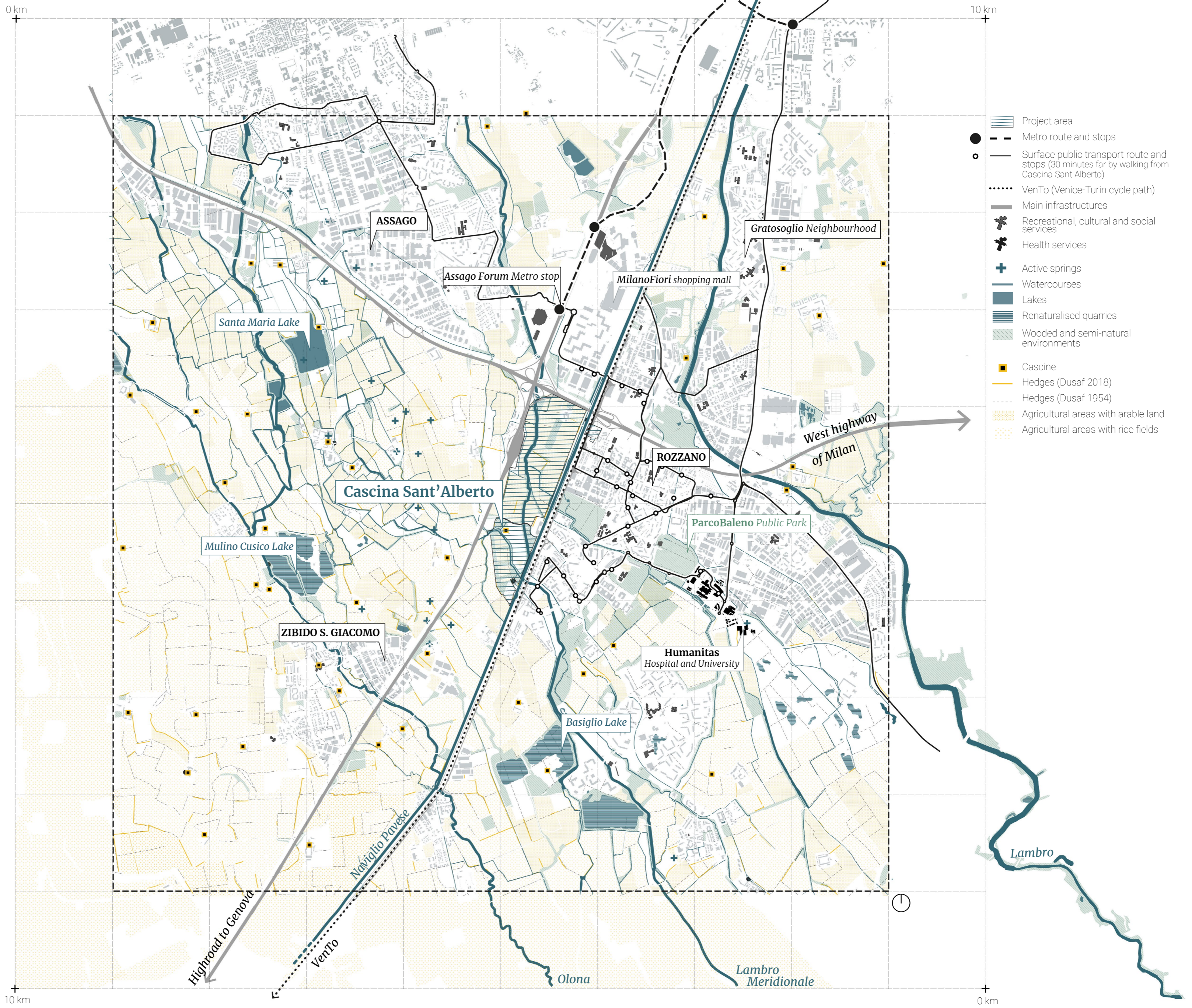
03 Cascina Sant'Alberto: a central node of the periurban transition

Cascina Sant'Alberto is located between the metropolitan city of Milan and the province of Pavia, in the municipality of **Rozzano**. It is located in a transitional area between a dense urbanised fabric and a discontinuous urbanised fabric. The area is located within the **Parco Agricolo Sud di Milano**, a metropolitan belt park where agriculture, recognized as a multidisciplinary practice, is the main activity of the territorial and environmental protection system. The ecological corridors relevant to Cascina Sant'Alberto are the river courses. In particular, the **Lura - Olona water system** consisting of canals, irrigation ditches, streams, rivers and small streams flows through the area transversally. The area is located in the territory of the **springs**.

Macro scale systems



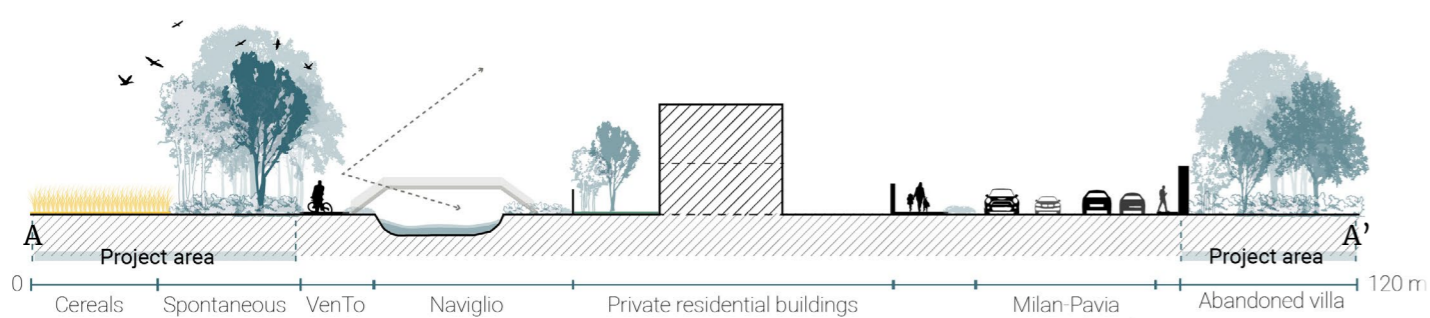
The periurban landscape between Milan and Rozzano



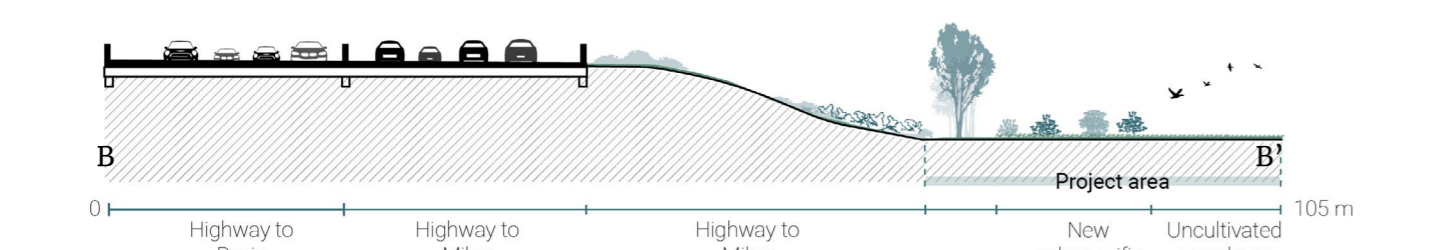
Existing situation of Cascina Sant'Alberto

Sections 1:500

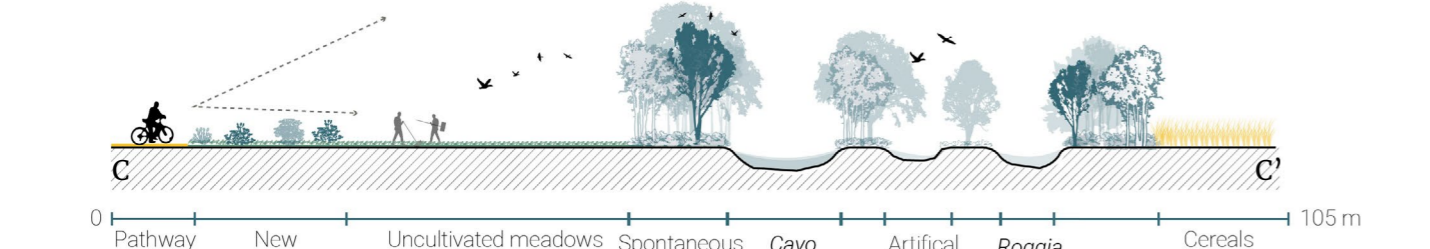
The eastern border and the relationship with the Naviglio cycle path and the abandoned villa



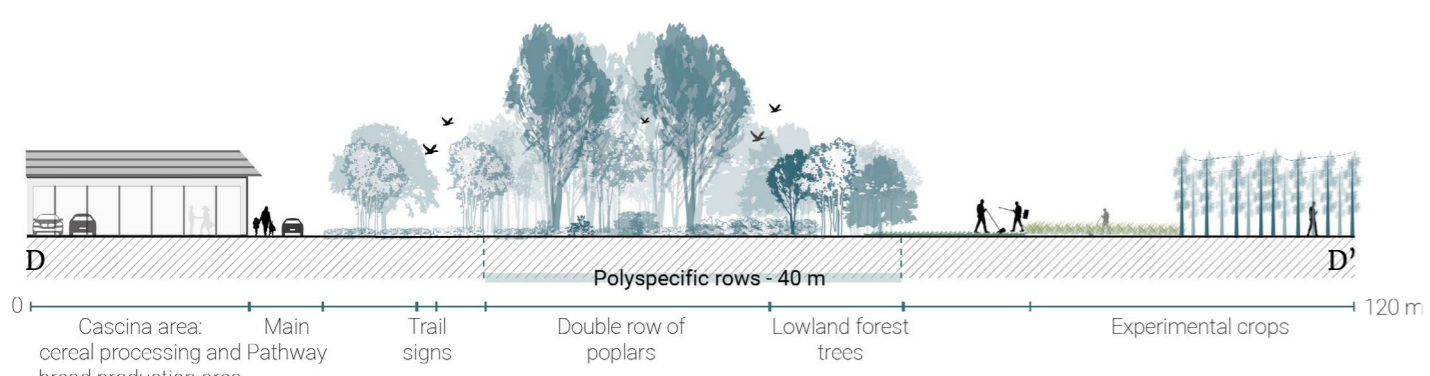
The western edge and the relationship with the Giovi highway



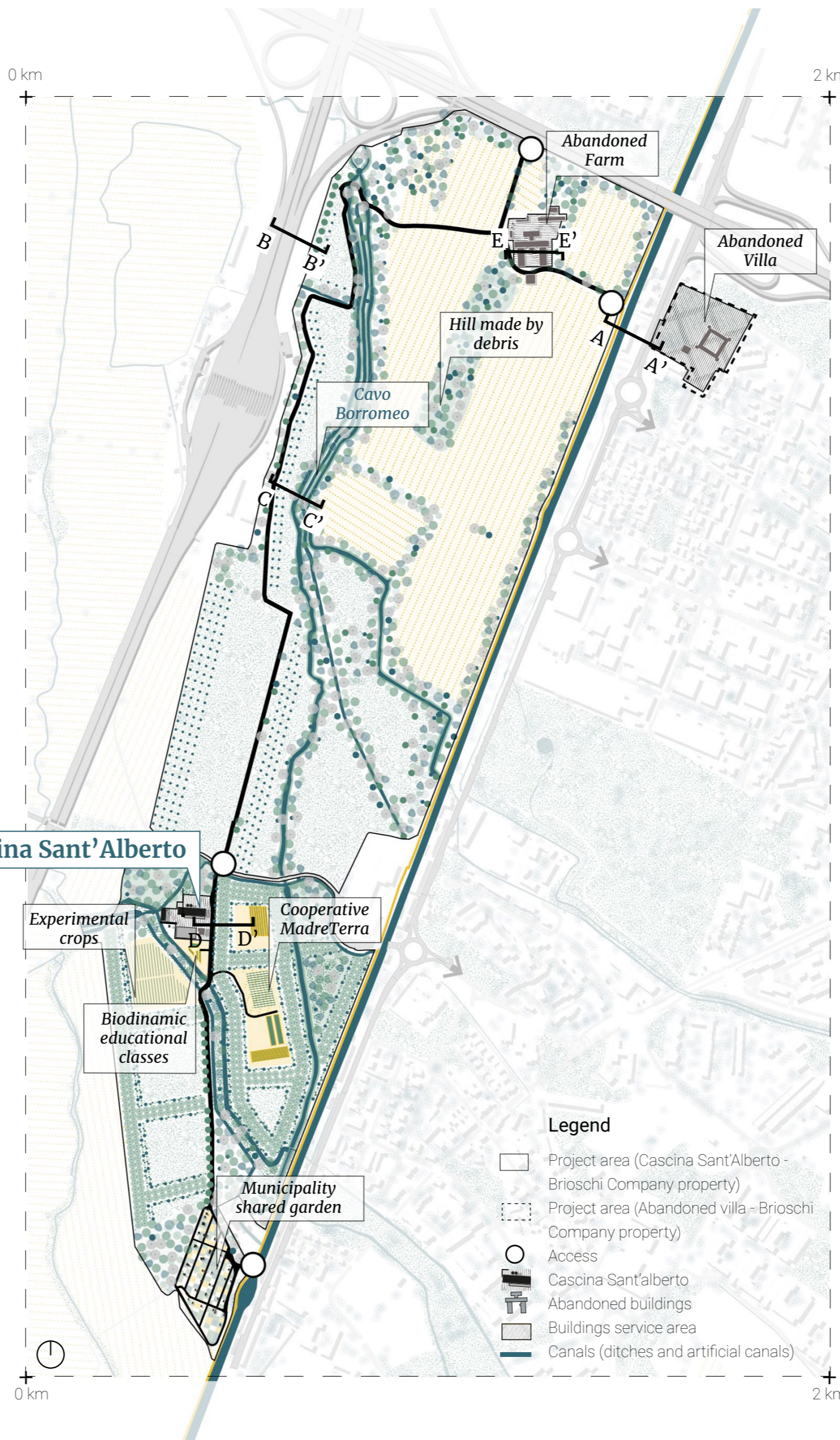
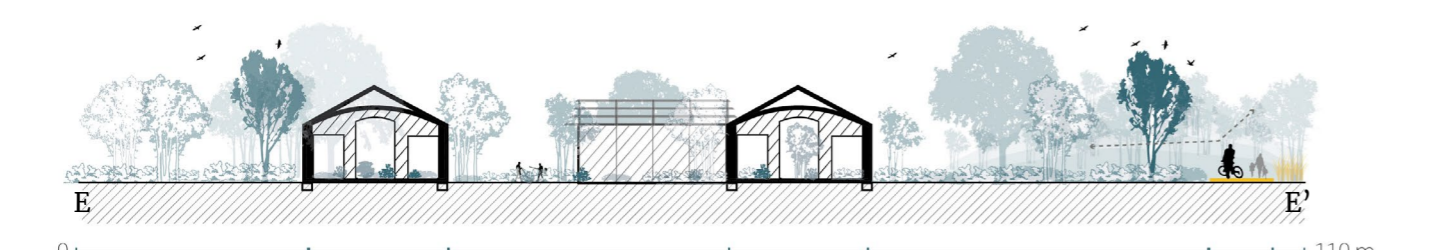
Areas of new forestation with plurispecific rows and natural and artificial watercourses



Cascina Sant'Alberto and the agroecological experimental areas

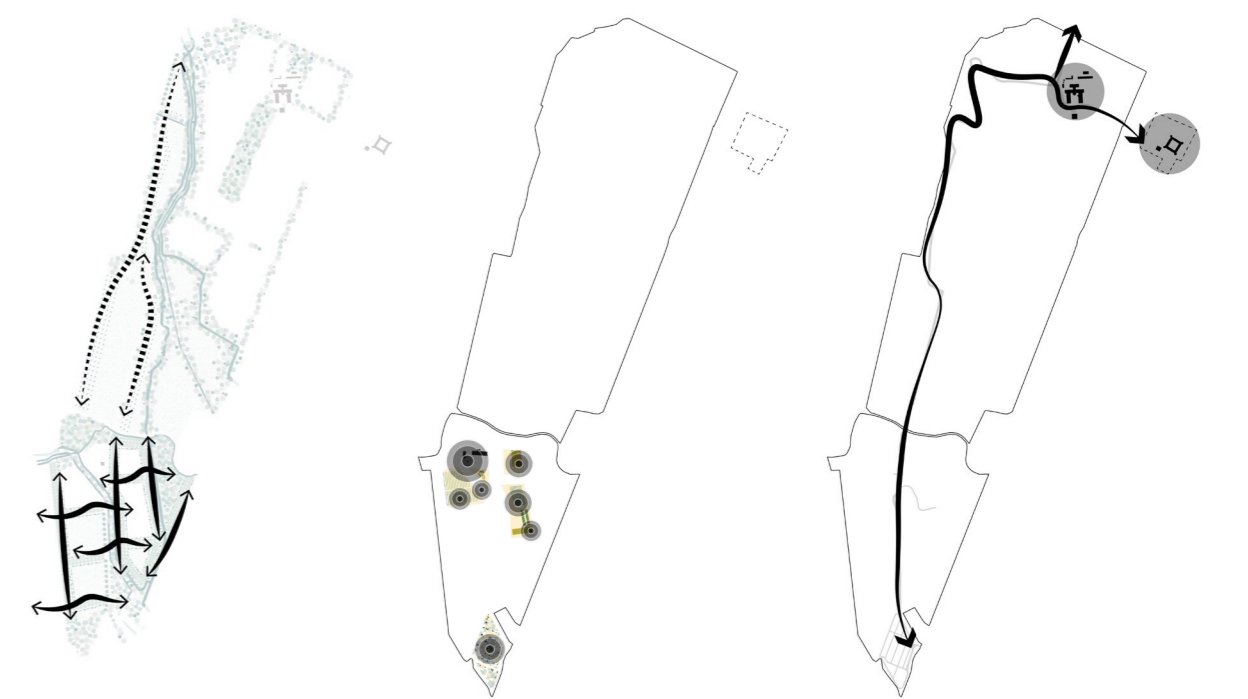


Abandoned rural farm and animal shed and natural areas



Strengths and weaknesses of the farm's model

- Attention to ecological corridors planting:** well-established corridors in the south and growing ones in the north
- Good quantity of participation activities, services and public spaces** but concentrated just in the south
- Possibility of crossing the area** but only with **one main path + abandoned buildings**



Agroecological existing design tools of Cascina Sant'Alberto

All the design tools adopted by Cascina Sant'Alberto, for which it is possible to donate a location, have been linked to a symbol in the legend. Sometimes the symbols refer to the place where the design tool is adopted.

Localisation	Design tool
Land management	No herbicides
	Crop rotation
	Open meadow
	Hedge planting
	Polyspecific tree rows (20 years old)
	New polyspecific tree rows
Equipped public spaces design	Reforestation
	Polyculture
	Horticulture
	Experimental crops
Community empowerment	Pathways
	Info panels
Presence in the whole area	Social farming
	Guided tours
	Apiculture
	Educational activities (workshops, lessons etc.)
	E-commerce sale
	Processing of agricultural products
	Canteen delivery service
	Cooperation with universities, schools, research institutes, local associations, cooperatives