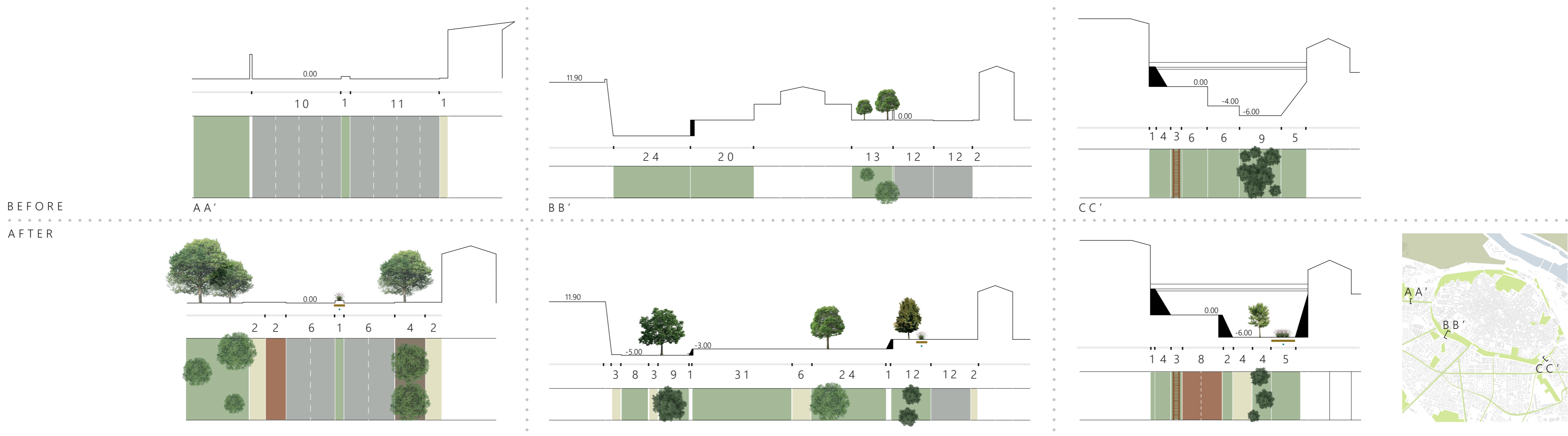


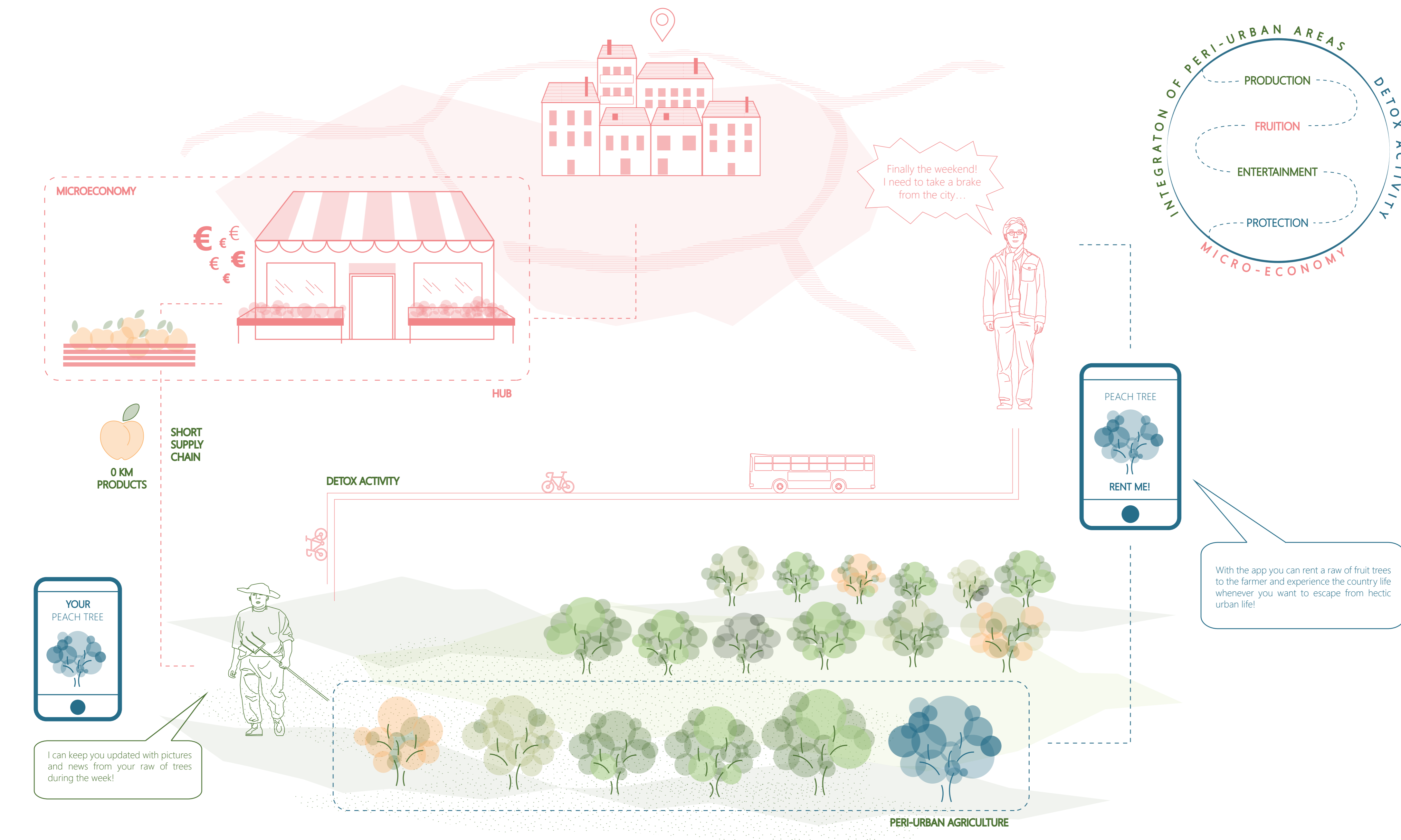
STREET SECTIONS: BEFORE AND AFTER



GREEN INFRASTRUCTURE

QUERCUS CERRIS (Turkey oak)	CELTIS AUSTRALIS (Hackberry)	ULMUS MINOR (Field elm)	FRAXINUS EXCELSIOR (Ash)	TILIA PLATYPHYLLOS (Large-leaved linden)	PLATANUS X HISPANICA (London planetree)	STYPHNOLOBIUM JAPONICUM (Japanese pagoda tree)	ALNUS GLUTINOSA (Black alder)	QUERCUS ILEX (Holly oak)	ACER CAMPESTER (Field maple)
3100	2800	2800	2800	2800	2800	2800	2600	2500	1900
absorbed CO ₂ [kg/20 years]	absorbed CO ₂ [kg/20 years]	absorbed CO ₂ [kg/20 years]	absorbed CO ₂ [kg/20 years]	absorbed CO ₂ [kg/20 years]	absorbed CO ₂ [kg/20 years]	absorbed CO ₂ [kg/20 years]	absorbed CO ₂ [kg/20 years]	absorbed CO ₂ [kg/20 years]	absorbed CO ₂ [kg/20 years]
0.1 kg of O ₂ absorbed per year 0.2 kg of NO ₂ absorbed per year 0.4 kg of SO ₂ absorbed per year 0.1 kg of PM ₁₀ absorbed per year	0.1 kg of O ₂ absorbed per year 0.2 kg of NO ₂ absorbed per year 0.3 kg of SO ₂ absorbed per year 0.1 kg of PM ₁₀ absorbed per year	0.5 kg of O ₂ absorbed per year 0.2 kg of NO ₂ absorbed per year 0.1 kg of SO ₂ absorbed per year 0.2 kg of PM ₁₀ absorbed per year	0.5 kg of O ₂ absorbed per year 0.2 kg of NO ₂ absorbed per year 0.1 kg of SO ₂ absorbed per year 0.2 kg of PM ₁₀ absorbed per year	0.3 kg of O ₂ absorbed per year 0.6 kg of NO ₂ absorbed per year 0.2 kg of SO ₂ absorbed per year 0.1 kg of PM ₁₀ absorbed per year	0.2 kg of O ₂ absorbed per year 0.3 kg of NO ₂ absorbed per year 0.4 kg of SO ₂ absorbed per year 0.2 kg of PM ₁₀ absorbed per year	0.1 kg of O ₂ absorbed per year 0.1 kg of NO ₂ absorbed per year 0.3 kg of SO ₂ absorbed per year 0.1 kg of PM ₁₀ absorbed per year	0.1 kg of O ₂ absorbed per year 0.1 kg of NO ₂ absorbed per year 0.2 kg of SO ₂ absorbed per year 0.1 kg of PM ₁₀ absorbed per year	0.6 kg of O ₂ absorbed per year 0.3 kg of NO ₂ absorbed per year 0.1 kg of SO ₂ absorbed per year 0.4 kg of PM ₁₀ absorbed per year	0.1 kg of O ₂ absorbed per year 0.1 kg of NO ₂ absorbed per year 0.1 kg of SO ₂ absorbed per year 0.1 kg of PM ₁₀ absorbed per year

TREEDOM - PIACENZA VERSION



FRUIT TREES IN PERI-URBAN AGRICULTURE

PRUNUS ARMENIACA (Apricot tree)	PRUNUS AVIUM (Cherry tree)	PRUNUS DULCIS (Almond tree)	PRUNUS PERSICA (Peach tree)	PYRUS COMMUNIS (Pear tree)	VITIS VINIFERA (Grapevine)

ORNAMENTAL TREES

MAGNOLIA X SOULANGEANA (Saucer magnolia)	SALIX BABYLONICA (Weeping willow)