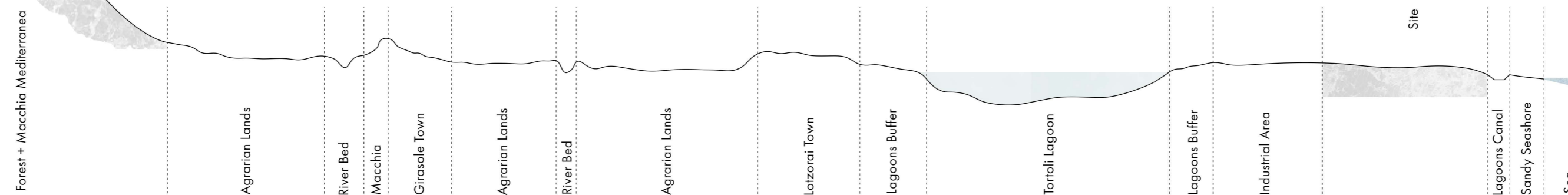
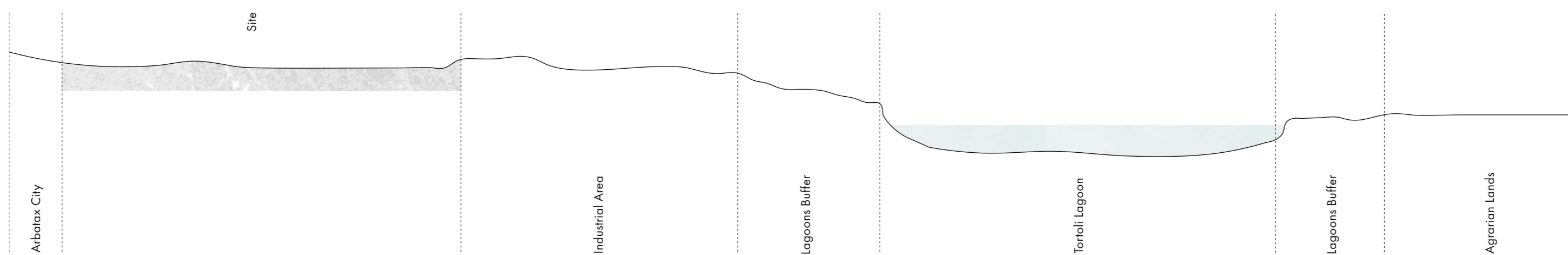


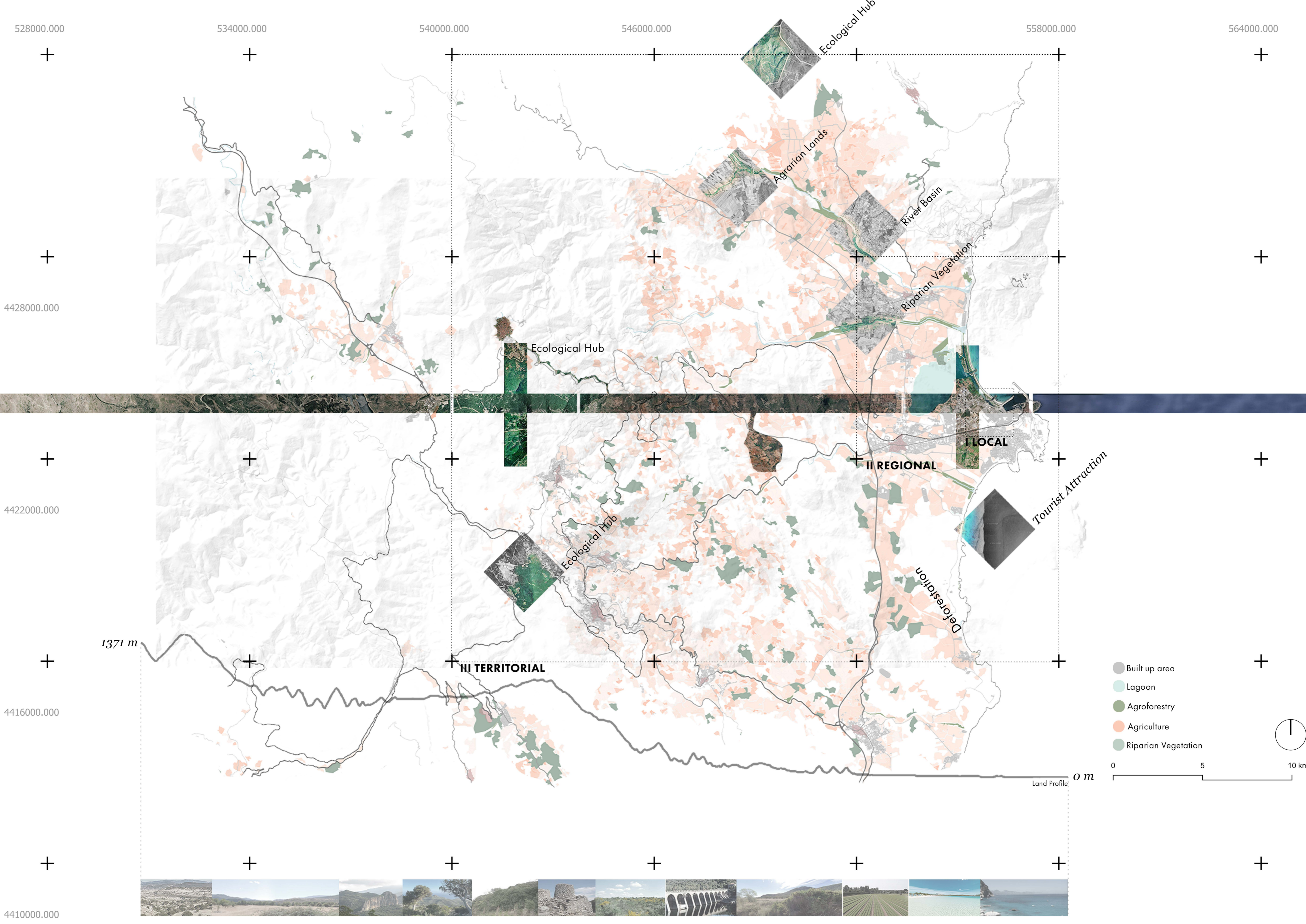
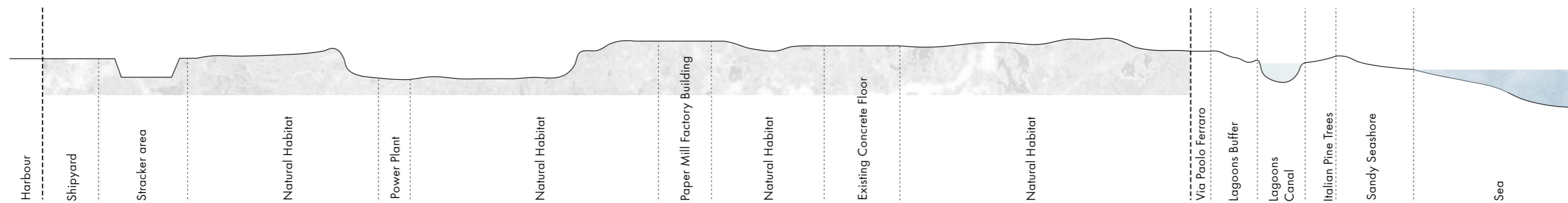
### III TERRITORIAL



### II REGIONAL



### I LOCAL



### Arrival Sequence of Significant Events

- 1893 The construction of railway
- 1902 The opening to traffic of the railway section between Cairo and Arbatax
- 1939 WWII Begins
- 1943 Bombing of the port of Arbatax
- 1960s Italian economic boom
- 1963 Cartiera di Arbatax Born
- 1965 Tortoli Airport Born as logistical and technical support for the near Arbatax paper mill
- 1970s The P2 Scandal
- 1970s 123 Via Arca
- 1981 Workers and leaders started self management
- 1989 The Crack
- 1990 Airport Closed as a direct Impact of Papermill closure
- 1990s 9416 Area
- 1997 Railway closed and used only for treno verde tourist track
- 2005 After 3 years of agony, Girasole Spa concluded the parable of the Paper Mill
- 2007 23 Via Arca
- 2022 After Almost 20 years of abandonment the rotine has conquered the papermill and its surrounding

### WEAVING THE LANDSCAPE

A SYSTEMIC DESIGN APPROACH TOWARDS INTEGRATIVE RECLAMATION OF ARBATAX FORMER PAPER MILL

Author: Alan Minovesi  
Supervisor: Matteo Moti



Politecnico di Milano

School of Architecture, Urban Design and Construction Engineering  
Msc. Sustainable Architecture and Landscape Design