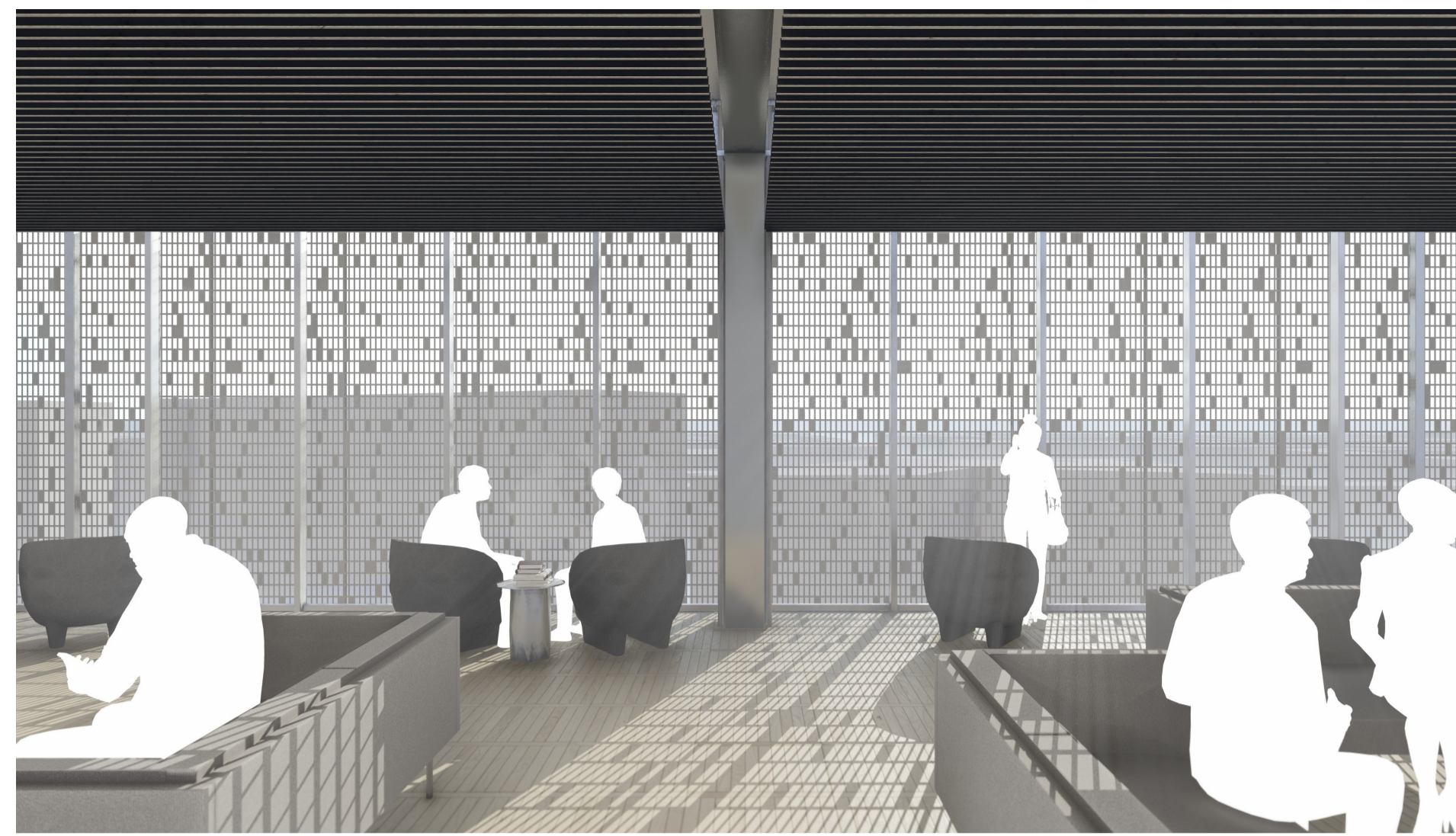
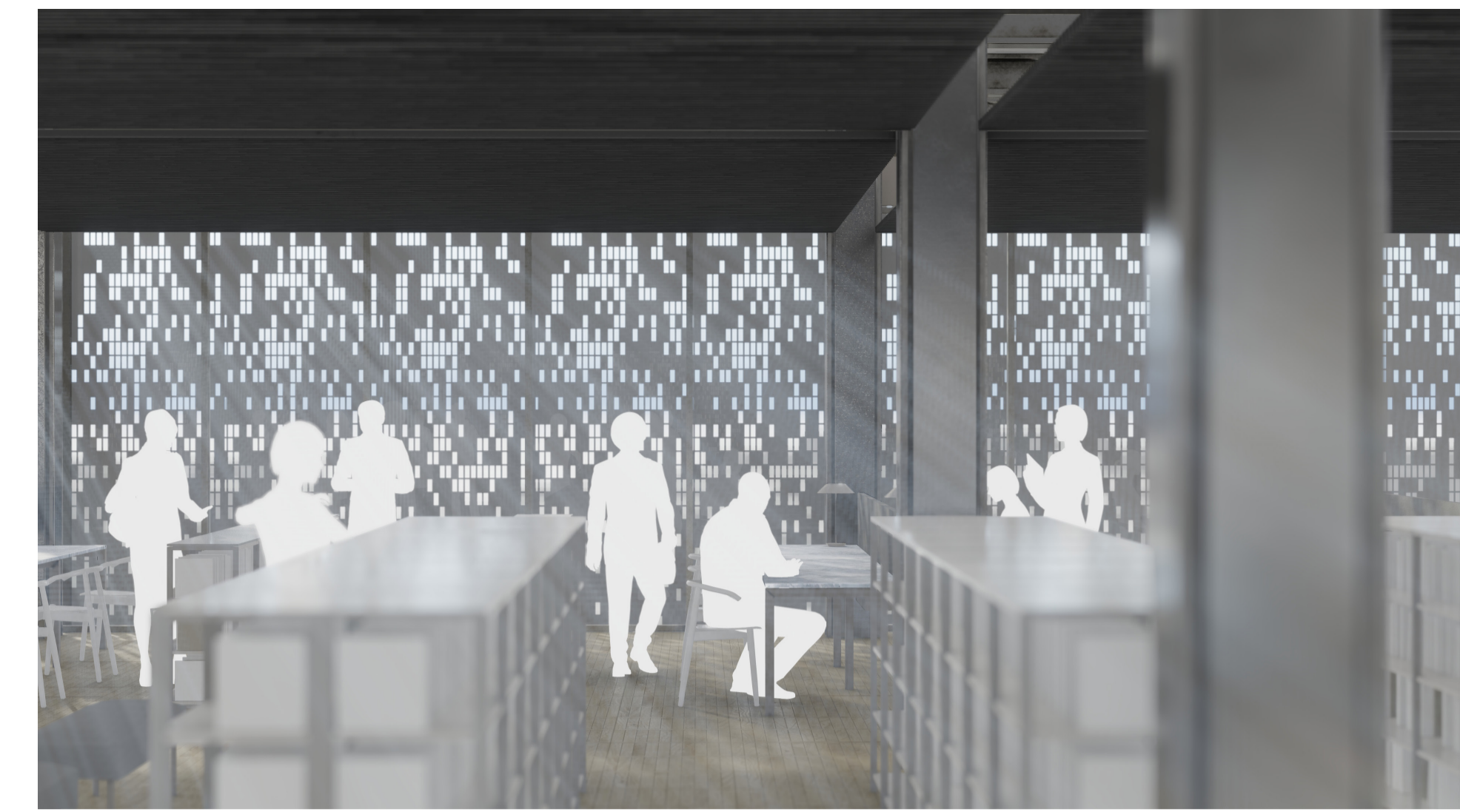




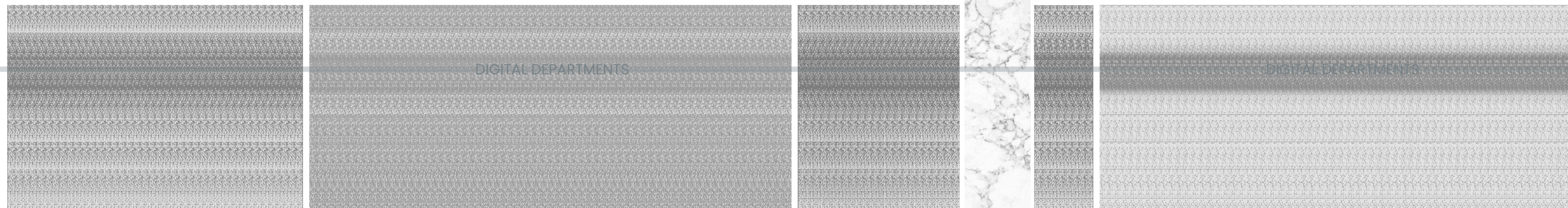
RENDERING - Imaginarium ground floor



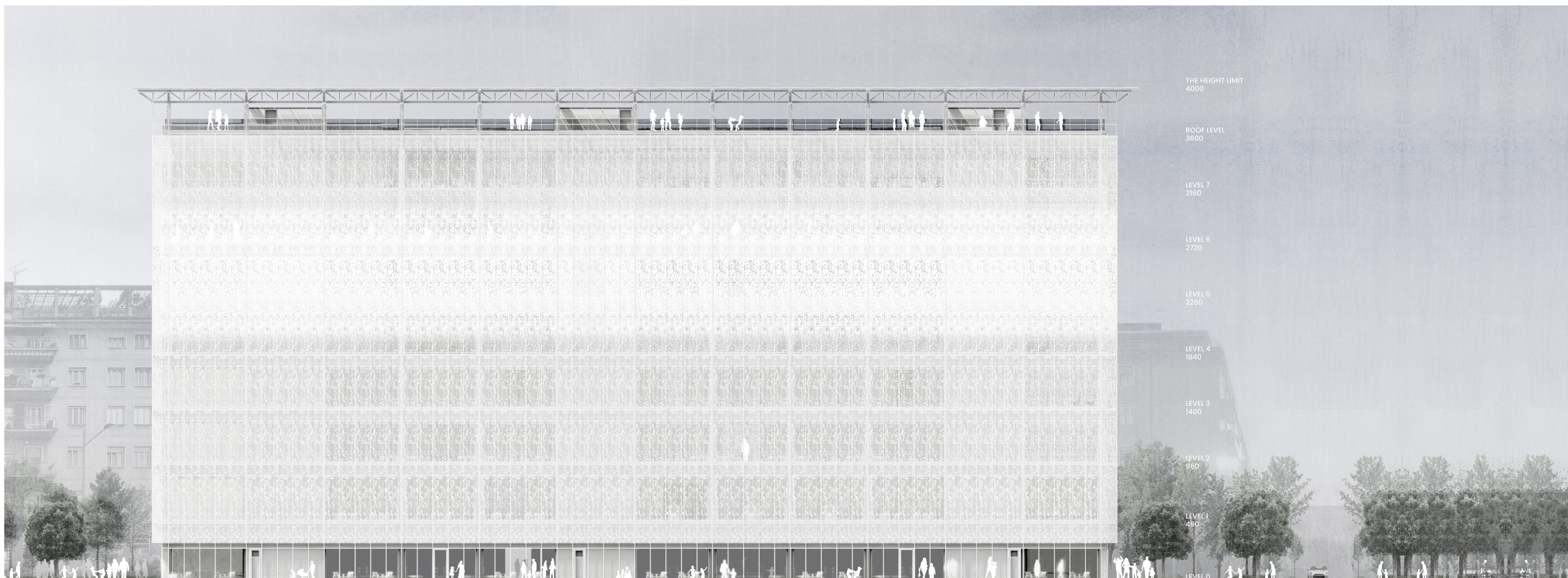
RENDERING - Library along north facade



RENDERING - Library along south facade



WEST SOUTH EAST TOWER NORTH
RIBBON DIAGRAM - parametric mesh facade alterations



NORTH ELEVATION

BIM WORKFLOW & FACADE DESIGN

LOD 100

CONCEPTUAL DESIGN

Focusing on the urban strategies for the city of Milan and specifically the Porta Vittoria area, then comparing these goals with the natural conditions of the site formed specific strategies for improving the quality of built environment.

LOD 200

SCHEMATIC DESIGN

Conceptual ideas were translated into a geometries and measures were controlled on 3D models. The character of the project was expressed in terms of program, spatial hierarchy, structural design, circulation patterns and relationship with surroundings.

LOD 300

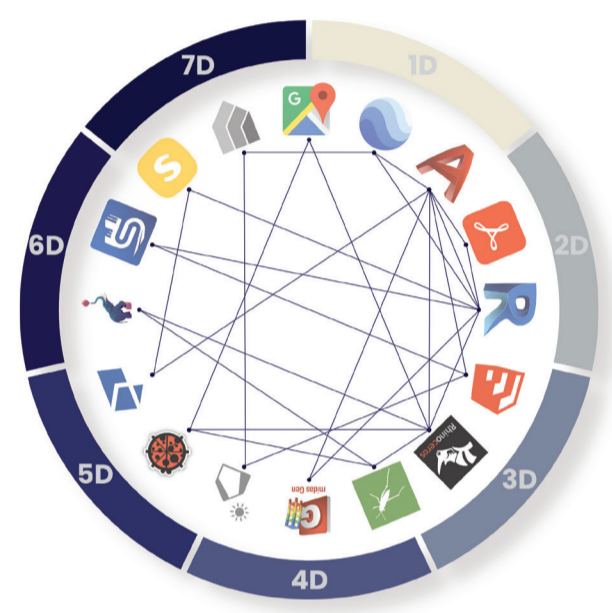
DESIGN DEVELOPMENT

The facade was defined in a precise manner using parametric tools to obtain the best performance. Interior spaces were analysed and revised based on data obtained.

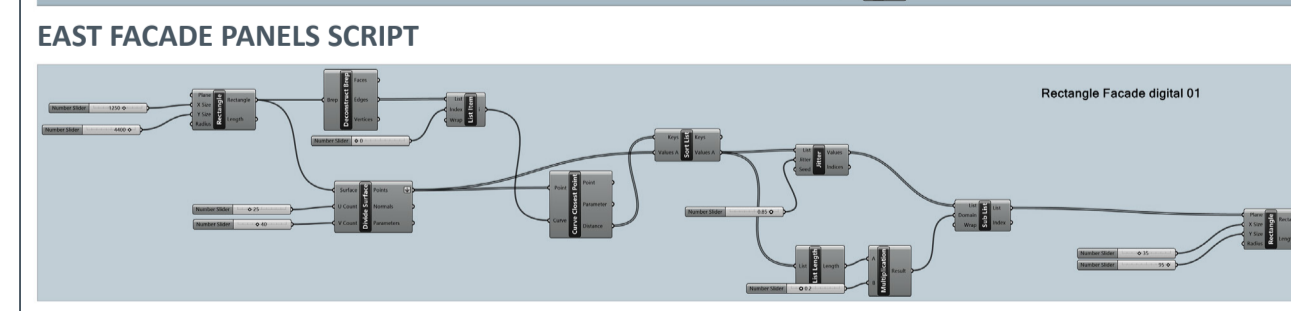
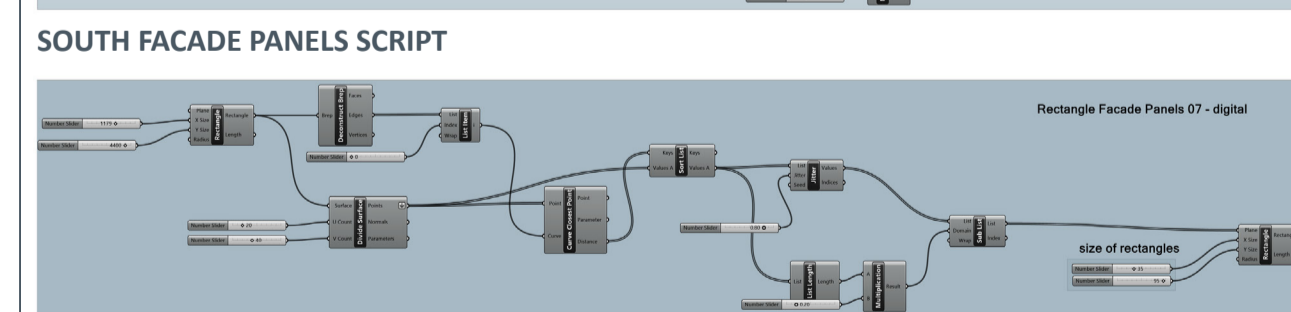
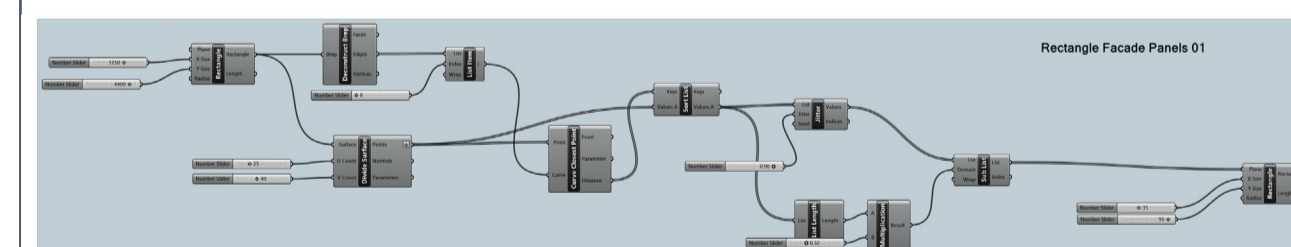
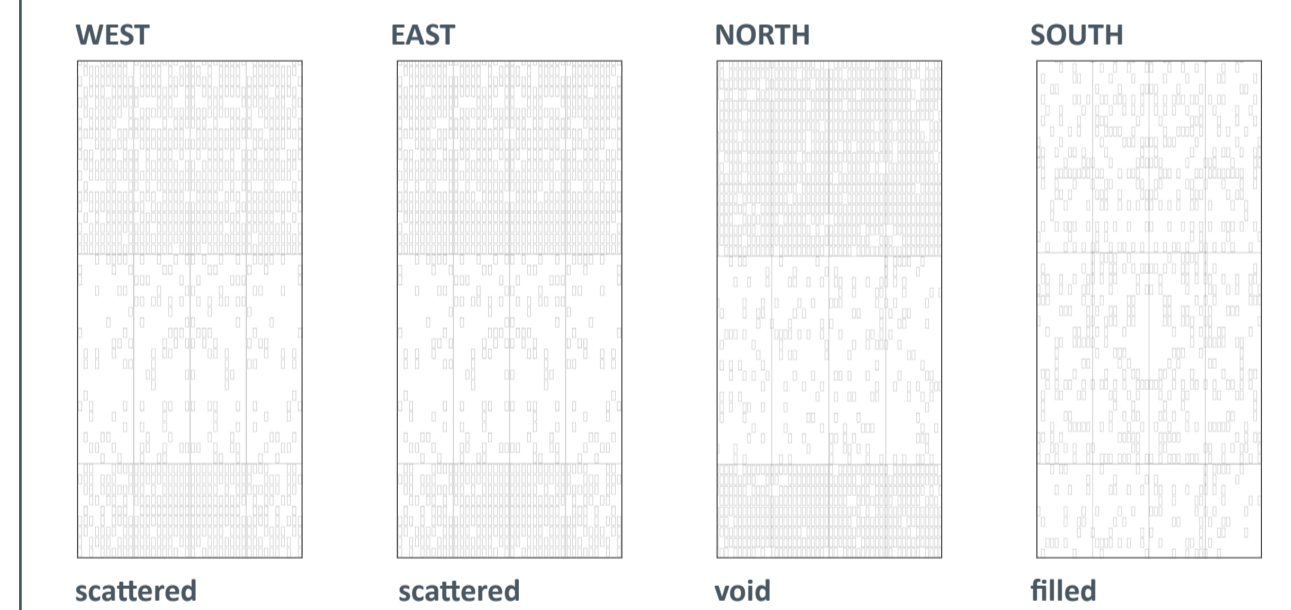
LOD 400

PERFORMANCE EVALUATION

Coordination between BIM softwares, as well as architectural and technical solutions, simulation of construction sequence and the level of sustainability were evaluated to make sure that the resulting project meets the initial goals defined on the urban scale.



INTERCONNECTION WEB BETWEEN THE SOFTWARES



NORTH FACADE PANELS SCRIPT