

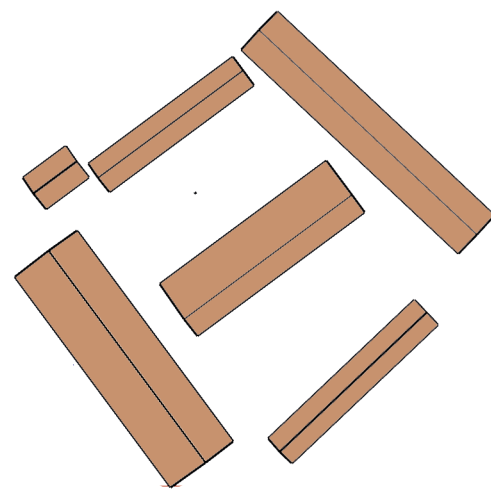
Parco Agricolo Ticinello

Parco Agricolo Ticinello



-- Ecologic Corridor
 1 Cascina Campazzo
 2 Cascina Campazzino

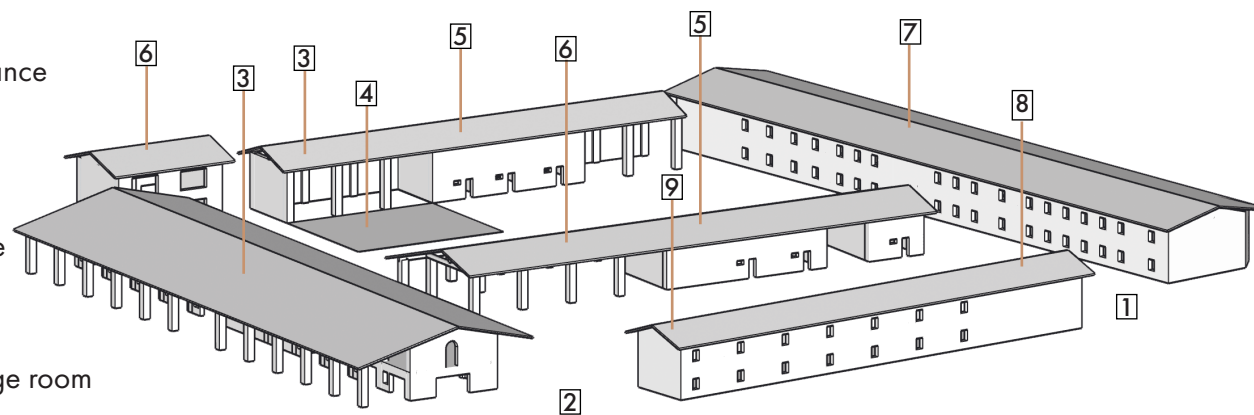
1. Cascina Campazzo Architectural Plan



- traditional closed courtyard plan: "multiple courtyard"
 - function: farmyard with livestock

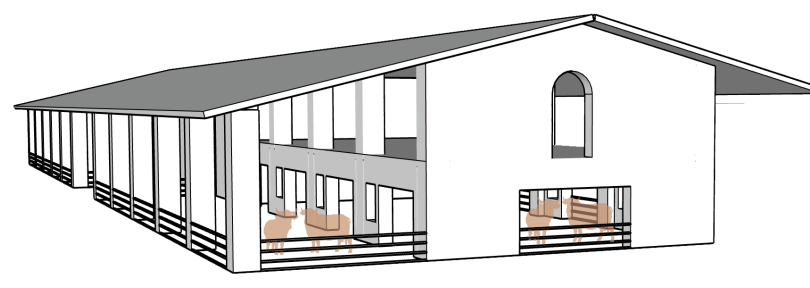
Typology of the Cascina Campazzo

- 1 main entrance
- 2 secondary entrance
- 3 stable
- 4 animals corral
- 5 storage
- 6 open air storage
- 7 housing
- 8 church
- 9 sleeping | storage room



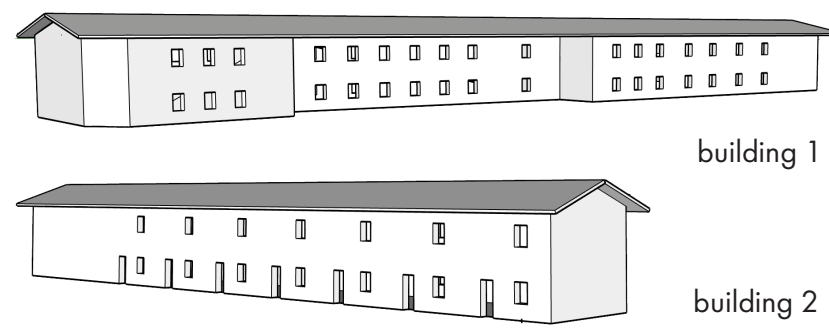
Building Typology:

Function: Stable
 Floors: 2
 max height: 6.20m
 Area:
 semi open area: 1100 m²
 closed area: 320 m²

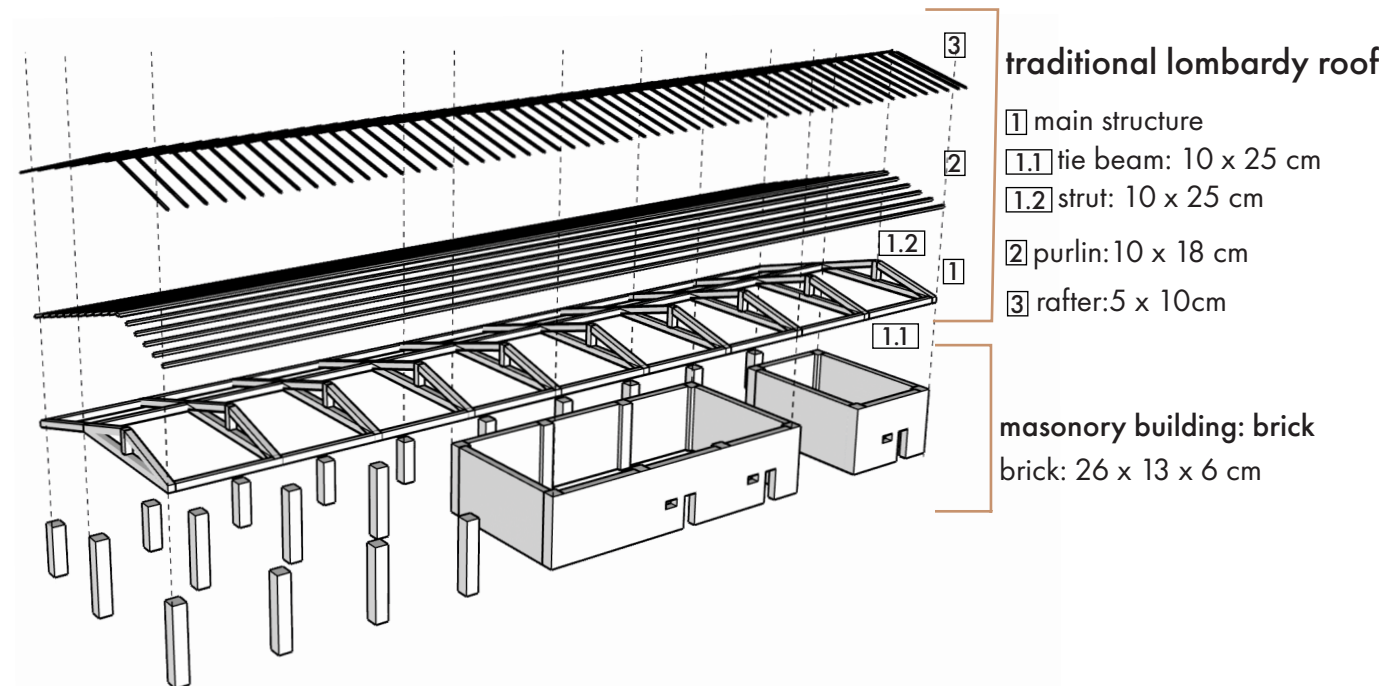


Building Typology:

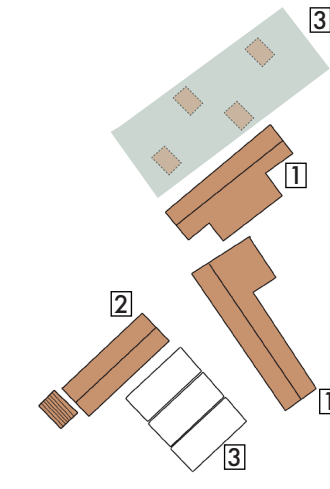
Function: Housing Unit
 Floors: 2
 max height: 6.20m
 Area:
 closed area:
 building 1: 2200 m²
 building 2: 560 m²



Structure of the Cascina Campazzo Building



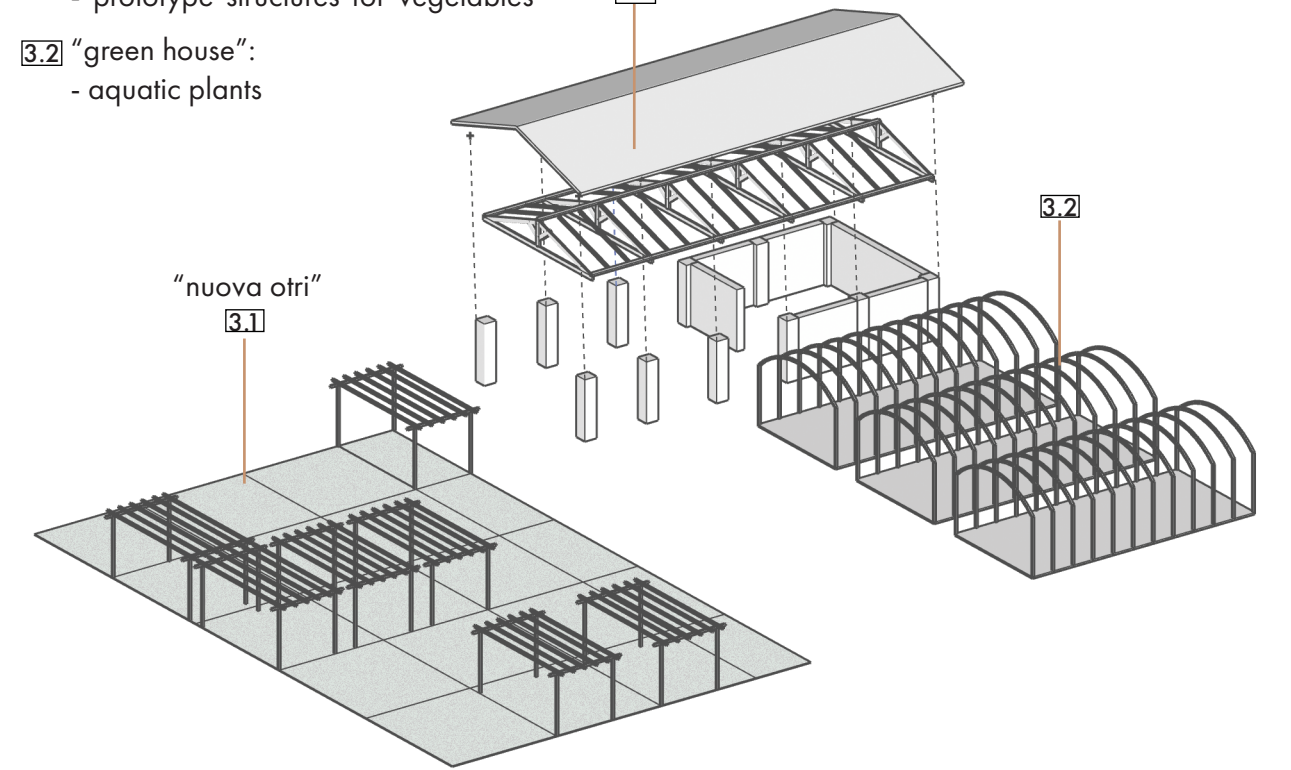
2. Cascina Campazzino Architectural Plan



- breaking the traditional plans: aggregation of the building in different stages.
 1 abandoned buildings
 2 refurbishment
 3 new design

Innovation in the Cascina Campazzino

- 2 "portico":
 - multifunctional public area
- 3.1 "nuova otri":
 - urban garden (vegetables)
 - prototype structures for vegetables
- 3.2 "green house":
 - aquatic plants



ECOLOGIC CORRIDOR: HYBRIDIZATION "RUrban"

